

TABLE 1
FIELD DATA SUMMARY TABLE
NOBLE 100322
BALL RANCH AC 15-65HN TANK BATTERY, WELD COUNTY, COLORADO
REM # 23764

Sample ID	Sample Date	Depth (ft)	GPS Data		PDOP Value	VOC Concentration (ppm)
			Latitude	Longitude		
MET01@6"	9/21/2022	0.5	40.577625	-104.430408	-	1.8 ppm
MET02@6"	9/21/2022	0.5	40.577628	-104.430385	-	1.5 ppm
ECD01@6"	9/21/2022	0.5	40.577506	-104.430315	-	1.9 ppm
ECD02@6"	9/21/2022	0.5	40.577507	-104.430268	-	1.4 ppm
AST02@1'	9/21/2022	1.0	40.577910	-104.430324	-	0.2 ppm
AST04@1'	9/21/2022	1.0	40.577828	-104.430322	-	0.1 ppm
AST05@1'	9/21/2022	1.0	40.577788	-104.430326	-	0.3 ppm
AST01@1.5'	9/21/2022	1.5	40.577959	-104.430325	-	0.3 ppm
AST03@1.5'	9/21/2022	1.5	40.577870	-104.430322	-	0.3 ppm
SEP01@3'	9/21/2022	3.0	40.577602	-104.430365	-	19.9 ppm
SEP02@3'	9/21/2022	3.0	40.577600	-104.430325	-	0.9 ppm
PWVS01@6'	9/21/2022	6.0	40.577735	-104.430330	-	2.2 ppm
PWVW01@6'	9/21/2022	6.0	40.577753	-104.430354	-	7.7 ppm
PWVN01@6'	9/21/2022	6.0	40.577769	-104.430322	-	12.6 ppm
PWVE01@6'	9/21/2022	6.0	40.577753	-104.430308	-	25.2 ppm
PWVB01@8'	9/21/2022	8.0	40.577753	-104.430332	-	27.1 ppm
SS-CEN 8FT	05/19/2023	8.0	40.577777	-104.430341	-	Refer to Bore Logs
N Wall 8 Ft	10/4/2024	8.0	40.5778041	-104.4303611	0.9	0.0 ppm
E Wall 8 Ft	10/4/2024	8.0	40.5777721	-104.4303165	0.9	0.0 ppm
S Wall 8 Ft	10/4/2024	8.0	40.5777393	-104.4303614	0.8	0.0 ppm
W Wall 8 Ft	10/4/2024	8.0	40.5777718	-104.4304050	0.8	0.0 ppm
SS-E 9FT	05/19/2023	9.0	40.577775	-104.430302	-	Refer to Bore Logs
SS-N 9FT	05/19/2023	9.0	40.577800	-104.430337	-	Refer to Bore Logs

TABLE 1
FIELD DATA SUMMARY TABLE
NOBLE 100322
BALL RANCH AC 15-65HN TANK BATTERY, WELD COUNTY, COLORADO
REM # 23764

Sample ID	Sample Date	Depth (ft)	GPS Data Latitude/Longitude		PDOP Value	VOC Concentration (ppm)
SS-W 9FT	05/19/2023	9.0	40.577777	-104.430374	-	Refer to Bore Logs
Floor 9 Ft	10/4/2024	9.0	40.5777701	-104.4303603	-	0.0 ppm
BKG 1 8FT	05/19/2023	8.0	40.5773491	-104.4301269	-	Refer to Bore Logs
BKG 4 8FT	05/19/2023	8.0	40.5780622	-104.4306687	-	Refer to Bore Logs
BKG 2 9FT	05/19/2023	9.0	40.5771648	-104.4304850	-	Refer to Bore Logs
BKG 3 9FT	05/19/2023	9.0	40.5774428	-104.4306647	-	Refer to Bore Logs
BKG 5 9FT	05/19/2023	9.0	40.5782812	-104.4302959	-	Refer to Bore Logs

1. Global Positioning System (GPS) data is provided in decimal degrees using North American Datum (NAD) 83 UTMZone 13 North.

2. Volatile organic compound (VOC) concentrations are measured in the field using a photoionization detector (PID).

PDOP = Position Dilution of Precision

ppm = Parts per million

in. = Inches

ft. = Feet

bgs = Below ground surface

Source material characterization sample, excavated and transported off site for disposal.

Material excavated and transported off site for disposal.

TABLE 2
SUMMARY OF VOLATILE ORGANIC SOIL CHEMISTRY DATA
NOBLE 100322
BALL RANCH AC 15-65HN TANK BATTERY, WELD COUNTY, COLORADO
REM # 23764

Sample ID	Sample Date	Depth (ft)	Benzene (mg/kg)	Toluene (mg/kg)	Ethyl-Benzene (mg/kg)	Xylenes (mg/kg)	1,2,4-Trimethyl-Benzene (mg/kg)	1,3,5-Trimethyl-Benzene (mg/kg)	Naphthalene (mg/kg)	TPH (mg/kg)	TPH GRO (mg/kg)	TPH DRO (mg/kg)	TPH ORO (mg/kg)
ECMC Table 915-1 Limits (Residential SSL)			1.2	490	5.8	58	30	27	2	500	500**		
ECMC Table 915-1 Limits (Protection of Groundwater SSL)			0.0026	0.69	0.78	9.9	0.0081	0.0087	0.0038	500	500**		
AST02@1'	09/21/2022	1.0	<0.0020	<0.0050	<0.0050	<0.010	<0.0050	<0.0050	<0.0038	<500	<0.50	<50	<50
AST04@1'	09/21/2022	1.0	<0.0020	<0.0050	<0.0050	<0.010	<0.0050	<0.0050	<0.0038	<500	<0.50	<50	<50
AST05@1'	09/21/2022	1.0	<0.0020	<0.0050	<0.0050	<0.010	<0.0050	<0.0050	<0.0038	<500	<0.50	<50	<50
AST01@1.5'	09/21/2022	1.5	<0.0020	<0.0050	<0.0050	<0.010	<0.0050	<0.0050	<0.0038	<500	<0.50	<50	<50
AST03@1.5'	09/21/2022	1.5	<0.0020	<0.0050	<0.0050	<0.010	<0.0050	<0.0050	<0.0038	<500	<0.50	<50	<50
SEP01@3'	09/21/2022	3.0	<0.0020	<0.0050	<0.0050	<0.010	<0.0050	<0.0050	<0.0038	<500	<0.50	<50	<50
SEP02@3'	09/21/2022	3.0	<0.0020	<0.0050	<0.0050	<0.010	<0.0050	<0.0050	<0.0038	<500	<0.50	<50	<50
PWVE01@6'	09/21/2022	6.0	<0.0020	0.0078	0.0061	0.028	0.0075	<0.0050	<0.0038	<500	<0.50	<50	<50
PWVB01@8'	09/21/2022	8.0	<0.0020	<0.0050	<0.0050	<0.010	0.012	<0.0050	0.0082	<500	<0.50	<50	<50
SS-CEN 8FT	05/19/2023	8.0	<0.0020	<0.0050	<0.0050	<0.010	<0.0050	0.006	<0.0038	<500	<0.50	<50	<50
E Wall 8ft	10/04/2024	8.0	<0.0020	<0.0050	<0.0050	<0.010	<0.0050	<0.0050	<0.0038	<500	<0.50	<50	<50
N Wall 8ft	10/04/2024	8.0	<0.0020	<0.0050	<0.0050	<0.010	<0.0050	<0.0050	<0.0038	<500	<0.50	<50	<50
S Wall 8ft	10/04/2024	8.0	<0.0020	<0.0050	<0.0050	<0.010	<0.0050	<0.0050	<0.0038	<500	<0.50	<50	<50
W Wall 8ft	10/04/2024	8.0	<0.0020	<0.0050	<0.0050	<0.010	<0.0050	<0.0050	<0.0038	<500	<0.50	<50	<50
SS-E 9FT	05/19/2023	9.0	<0.0020	<0.0050	<0.0050	<0.010	<0.0050	<0.0050	<0.0038	<500	<0.50	<50	<50
SS-N 9FT	05/19/2023	9.0	<0.0020	<0.0050	<0.0050	<0.010	<0.0050	<0.0050	<0.0038	<500	<0.50	<50	<50
SS-W 9FT	05/19/2023	9.0	<0.0020	<0.0050	<0.0050	<0.010	<0.0050	<0.0050	<0.0038	<500	<0.50	<50	<50
Floor 9ft	10/04/2024	9.0	<0.0020	<0.0050	<0.0050	<0.010	<0.0050	<0.0050	<0.0038	<500	<0.50	<50	<50

1. Bold values exceed the ECMC Table 915-1 limit(s)
2. Red & blue highlighted soil analytical values indicate an exceedance of the referenced soil screening level (SSL)
3. * Indicates laboratory minimum detection limit in excess of SSL
4. ** Summation of GRO+DRO+ORO must be less than 500 mg/kg
(<) = Analytical result is less than the indicated laboratory reporting limit.
TPH-GRO = Total petroleum hydrocarbons - gasoline range organics
TPH-DRO = Total petroleum hydrocarbons - diesel range organics
TPH-ORO = Total petroleum hydrocarbons - oil range organics
mg/kg = Milligrams per kilogram
ft. = Feet
bgs = Below ground surface
NA - Not analyzed
Source material characterization sample, excavated and transported off site for disposal.
Material excavated and transported off site for disposal.

TABLE 3
SUMMARY OF POLYCYCLIC AROMATIC HYDROCARBON SOIL CHEMISTRY DATA
NOBLE 100322
BALL RANCH AC 15-65HN TANK BATTERY, WELD COUNTY, COLORADO
REM # 23764

Sample ID	Sample Date	Depth (ft)	Acenaphthene (mg/kg)	Anthracene (mg/kg)	Benzo (a) Anthracene (mg/kg)	Benzo (a) Pyrene (mg/kg)	Benzo (b) Fluoranthene (mg/kg)	Benzo (k) Fluoranthene (mg/kg)	Chrysene (mg/kg)	Dibenzo (a,h) Anthracene (mg/kg)	Fluoranthene (mg/kg)	Fluorene (mg/kg)	Indeno (1,2,3-cd) Pyrene (mg/kg)	Pyrene (mg/kg)	1-Methyl - Naphthalene (mg/kg)	2-Methyl - Naphthalene (mg/kg)
ECMC Table 915-1 Limits (Residential SSL)			360	1800	1.1	0.11	1.1	11	110	0.11	240	240	1.1	180	18	24
ECMC Table 915-1 Limits (Protection of Groundwater SSL)			0.55	5.8	0.011	0.24	0.3	2.9	9	0.096	8.9	0.54	0.98	1.3	0.006	0.019
AST02@1'	09/21/2022	1	<0.00500	<0.00500	<0.00500	<0.00500	<0.00500	<0.00500	<0.00500	<0.00500	<0.00500	<0.00500	<0.00500	<0.00500	<0.00500	<0.00500
AST04@1'	09/21/2022	1	<0.00500	<0.00500	<0.00500	<0.00500	<0.00500	<0.00500	<0.00500	<0.00500	<0.00500	<0.00500	<0.00500	<0.00500	<0.00500	<0.00500
AST05@1'	09/21/2022	1	<0.00500	<0.00500	<0.00500	<0.00500	<0.00500	<0.00500	<0.00500	<0.00500	<0.00500	<0.00500	<0.00500	<0.00500	<0.00500	<0.00500
AST01@1.5'	09/21/2022	1.5	<0.00500	<0.00500	<0.00500	<0.00500	<0.00500	<0.00500	<0.00500	<0.00500	<0.00500	<0.00500	<0.00500	<0.00500	<0.00500	<0.00500
AST03@1.5'	09/21/2022	1.5	<0.00500	<0.00500	<0.00500	<0.00500	<0.00500	<0.00500	<0.00500	<0.00500	<0.00500	<0.00500	<0.00500	<0.00500	<0.00500	<0.00500
SEP01@3'	09/21/2022	3	<0.00500	<0.00500	<0.00500	<0.00500	<0.00500	<0.00500	<0.00500	<0.00500	<0.00500	<0.00500	<0.00500	<0.00500	<0.00500	<0.00500
SEP02@3'	09/21/2022	3	<0.00500	<0.00500	<0.00500	<0.00500	<0.00500	<0.00500	<0.00500	<0.00500	<0.00500	<0.00500	<0.00500	<0.00500	<0.00500	<0.00500
PWVE01@6'	09/21/2022	6	<0.00500	<0.00500	<0.00500	<0.00500	<0.00500	<0.00500	<0.00500	<0.00500	<0.00500	<0.00500	<0.00500	<0.00500	<0.00500	<0.00500
PWVB01@8'	09/21/2022	8	<0.00500	<0.00500	<0.00500	<0.00500	<0.00500	<0.00500	<0.00500	<0.00500	<0.00500	<0.00500	<0.00500	<0.00500	0.0168	<0.00500
SS-CEN 8FT	05/19/2023	8	<0.00500	<0.00500	0.0219	<0.00500	<0.00500	<0.00500	0.0222	<0.00500	<0.00500	<0.00500	<0.00500	0.0400	0.24	<0.00500
E Wall 8ft	10/04/2024	8	<0.00500	<0.00500	<0.00500	<0.00500	<0.00500	<0.00500	<0.00500	<0.00500	<0.00500	<0.00500	<0.00500	<0.00500	<0.00500	<0.00500
N Wall 8ft	10/04/2024	8	<0.00500	<0.00500	<0.00500	<0.00500	<0.00500	<0.00500	<0.00500	<0.00500	<0.00500	<0.00500	<0.00500	<0.00500	<0.00500	<0.00500
S Wall 8ft	10/04/2024	8	<0.00500	<0.00500	<0.00500	<0.00500	<0.00500	<0.00500	<0.00500	<0.00500	<0.00500	<0.00500	<0.00500	<0.00500	<0.00500	<0.00500
W Wall 8ft	10/04/2024	8	<0.00500	<0.00500	<0.00500	<0.00500	<0.00500	<0.00500	<0.00500	<0.00500	<0.00500	<0.00500	<0.00500	<0.00500	<0.00500	<0.00500
SS-E 9FT	05/19/2023	9	<0.00500	<0.00500	<0.00500	<0.00500	<0.00500	<0.00500	<0.00500	<0.00500	<0.00500	<0.00500	<0.00500	<0.00500	<0.00500	<0.00500
SS-N 9FT	05/19/2023	9	<0.00500	<0.00500	<0.00500	<0.00500	<0.00500	<0.00500	<0.00500	<0.00500	<0.00500	<0.00500	<0.00500	<0.00500	<0.00500	<0.00500
SS-W 9FT	05/19/2023	9	<0.00500	<0.00500	<0.00500	<0.00500	<0.00500	<0.00500	<0.00500	<0.00500	<0.00500	<0.00500	<0.00500	<0.00500	<0.00500	<0.00500
Floor 9ft	10/04/2024	9	<0.00500	<0.00500	<0.00500	<0.00500	<0.00500	<0.00500	<0.00500	<0.00500	<0.00500	<0.00500	<0.00500	<0.00500	<0.00500	<0.00500

- Bold values exceed the ECMC Table 915-1 limit(s)
 - Red & blue highlighted soil analytical values indicate an exceedance of the referenced soil screening level (SSL)
 - * Indicates laboratory minimum detection limit in excess of SSL
 - ** Summation of GRO+DRO+ORO must be less than 500 mg/kg
- (<) = Analytical result is less than the indicated laboratory reporting limit.
TPH-GRO = Total petroleum hydrocarbons - gasoline range organics
TPH-DRO = Total petroleum hydrocarbons - diesel range organics
TPH-ORO = Total petroleum hydrocarbons - oil range organics
mg/kg = Milligrams per kilogram
ft. = Feet
bgs = Below ground surface
NA - Not analyzed

Source material characterization sample, excavated and transported off site for disposal.

Material excavated and transported off site for disposal.

TABLE 4
SUMMARY OF SOIL SUITABILITY FOR RECLAMATION
NOBLE 100322
BALL RANCH AC 15-65HN TANK BATTERY, WELD COUNTY, COLORADO
REM # 23764

Sample ID	Sample Date	Depth (ft)	pH (Standard Units)	EC (mmhos/cm)	SAR (Standard Units)	Boron (mg/L)
ECMC Table 915-1 Soil Suitability Limits			6 - 8.3	4	6	2
AST02@1'	09/21/2022	1.0	6.78	3.06	0.452	0.0782
AST04@1'	09/21/2022	1.0	6.30	1.74	0.359	0.0987
AST05@1'	09/21/2022	1.0	7.33	4.07	0.499	0.140
AST01@1.5'	09/21/2022	1.5	6.66	2.39	0.478	0.0615
AST03@1.5'	09/21/2022	1.5	6.72	0.995	0.378	0.0379
SEP01@3'	09/21/2022	3.0	7.92	0.297	0.823	0.173
SEP02@3'	09/21/2022	3.0	7.72	0.992	1.13	0.205
PWVE01@6'	09/21/2022	6.0	7.94	0.308	2.19	0.308
PWVB01@8'	09/21/2022	8.0	7.97	0.834	1.50	0.198
SS-CEN 8FT	05/19/2023	8.0	7.30	0.593	1.33	0.654
E Wall 8ft	10/04/2024	8.0	9.14	0.566	0.411	<2.00
N Wall 8ft	10/04/2024	8.0	8.69	0.51	2.11	<2.00
S Wall 8ft	10/04/2024	8.0	8.65	0.151	1.93	<2.00
W Wall 8ft	10/04/2024	8.0	8.59	0.484	2.05	<2.00
SS-E 9FT	05/19/2023	9.0	6.91	0.361	0.738	1.06
SS-N 9FT	05/19/2023	9.0	6.92	0.728	3.53	1.25
SS-W 9FT	05/19/2023	9.0	6.96	1.06	3.36	0.697
Floor 9ft	10/04/2024	9.0	7.71	0.238	2.25	<2.00
BKG 1 8FT	05/19/2023	8.0	7.14	0.260	0.473	0.730
BKG 4 8FT	05/19/2023	8.0	7.22	2.05	2.26	1.41
BKG 2 9FT	05/19/2023	9.0	6.93	0.219	0.812	1.19
BKG 3 9FT	05/19/2023	9.0	6.78	2.46	1.92	0.691

TABLE 4
SUMMARY OF SOIL SUITABILITY FOR RECLAMATION
NOBLE 100322
BALL RANCH AC 15-65HN TANK BATTERY, WELD COUNTY, COLORADO
REM # 23764

Sample ID	Sample Date	Depth (ft)	pH (Standard Units)	EC (mmhos/cm)	SAR (Standard Units)	Boron (mg/L)
ECMC Table 915-1 Soil Suitability Limits			6 - 8.3	4	6	2
BKG 5 9FT	05/19/2023	9.0	7.41	3.30	2.24	0.837
Maximum Background Concentration		8.0	7.22	2.05	2.26	1.41
Maximum Background Concentration		9.0	7.41	3.30	2.24	1.19

1. **Bold** faced values exceed the ECMC Table 915-1 limit(s), but are within background concentrations.

2. **Bold** faced values exceed the ECMC Table 915-1 limit(s) and native background concentrations.

3. Brown highlighted soil analytical values indicate a regulatory exceedance.

NA - Not analyzed/Not applicable

Source material characterization sample, excavated and transported off site for disposal.

Material excavated and transported off site for disposal.

TABLE 5
SUMMARY OF METALS IN SOIL CHEMISTRY DATA
NOBLE 100322
BALL RANCH AC 15-65HN TANK BATTERY, WELD COUNTY, COLORADO
REM # 23764

Sample ID	Sample Date	Depth (ft)	Arsenic (mg/kg)	Barium (mg/kg)	Cadmium (mg/kg)	Chromium (VI) (mg/kg)	Copper (mg/kg)	Lead (mg/kg)	Nickel (mg/kg)	Selenium (mg/kg)	Silver (mg/kg)	Zinc (mg/kg)
ECMC Table 915-1 Limits (Residential SSL)			0.68	15000	71	0.3	3100	400	1500	390	390	23000
ECMC Table 915-1 Limits (Protection of Groundwater SSL)			0.29	82	0.38	0.00067	46	14	26	0.26	0.8	370
AST02@1'	09/21/2022	1.0	NA	NA	NA	NA	NA	NA	NA	NA	NA	NA
AST04@1'	09/21/2022	1.0	NA	NA	NA	NA	NA	NA	NA	NA	NA	NA
AST05@1'	09/21/2022	1.0	NA	NA	NA	NA	NA	NA	NA	NA	NA	NA
AST01@1.5'	09/21/2022	1.5	NA	NA	NA	NA	NA	NA	NA	NA	NA	NA
AST03@1.5'	09/21/2022	1.5	NA	NA	NA	NA	NA	NA	NA	NA	NA	NA
SEP01@3'	09/21/2022	3.0	NA	NA	NA	NA	NA	NA	NA	NA	NA	NA
SEP02@3'	09/21/2022	3.0	NA	NA	NA	NA	NA	NA	NA	NA	NA	NA
PWVE01@6'	09/21/2022	6.0	NA	NA	NA	NA	NA	NA	NA	NA	NA	NA
SS-CEN 8FT	05/19/2023	8.0	0.804	70.3	<0.242	<0.30	2.14	4.81	1.70	<0.314	<0.0242	8.11
E Wall 8ft	10/04/2024	8.0	3.88	195	0.230	<0.30	8.4	7.79	7.94	<0.260	0.0344	51.6
N Wall 8ft	10/04/2024	8.0	16.1	45.1	0.478	<0.30	15.9	13.0	27.9	0.841	0.0470	239
S Wall 8ft	10/04/2024	8.0	4.73	65.3	0.216	<0.30	11.1	8.6	7.83	0.269	0.0445	71.6
W Wall 8ft	10/04/2024	8.0	5.98	24.7	0.239	<0.30	10.4	8.97	10.8	0.646	0.0393	92.0
SS-E 9FT	05/19/2023	9.0	2.52	9.29	<0.245	<0.30	4.65	2.93	1.07	0.436	0.0383	7.29
SS-N 9FT	05/19/2023	9.0	0.875	6.39	<0.249	<0.30	4.01	2.30	3.89	<0.324	<0.0249	16.2
SS-W 9FT	05/19/2023	9.0	1.72	62.8	<0.248	<0.30	4.51	239	1.00	1.64	0.0550	6.70
Floor 9ft	10/04/2024	9.0	3.32	99.9	<0.200	<0.30	9.59	8.38	2.17	0.267	0.0454	13.5

TABLE 5
SUMMARY OF METALS IN SOIL CHEMISTRY DATA
NOBLE 100322
BALL RANCH AC 15-65HN TANK BATTERY, WELD COUNTY, COLORADO
REM # 23764

Sample ID	Sample Date	Depth (ft)	Arsenic (mg/kg)	Barium (mg/kg)	Cadmium (mg/kg)	Chromium (VI) (mg/kg)	Copper (mg/kg)	Lead (mg/kg)	Nickel (mg/kg)	Selenium (mg/kg)	Silver (mg/kg)	Zinc (mg/kg)
ECMC Table 915-1 Limits (Residential SSL)			0.68	15000	71	0.3	3100	400	1500	390	390	23000
ECMC Table 915-1 Limits (Protection of Groundwater SSL)			0.29	82	0.38	0.00067	46	14	26	0.26	0.8	370
BKG 1 8FT	05/19/2023	8.0	1.09	111	<0.246	<0.30	3.63	8.38	3.98	0.333	0.0399	25.0
BKG 4 8FT	05/19/2023	8.0	2.90	24.3	<0.253	<0.30	2.74	6.44	1.60	1.18	0.0380	14.9
BKG 2 9FT	05/19/2023	9.0	1.00	33.8	<0.257	<0.30	4.36	13.9	0.796	0.496	0.0458	6.85
BKG 3 9FT	05/19/2023	9.0	0.596	18.2	<0.246	<0.30	4.64	3.34	0.815	<0.320	0.0477	5.24
BKG 5 9FT	05/19/2023	9.0	2.25	11.1	<0.245	<0.30	4.11	6.46	1.31	0.514	0.0455	9.93
1.25x Maximum Background Concentration		8.0	3.63	139	<0.253	<0.30	4.54	10.5	4.98	1.48	0.0499	31.3
1.25x Maximum Background Concentration		9.0	2.81	42.3	<0.257	<0.30	5.80	17.4	1.64	0.643	0.0596	12.4

- 1.** Bold faced values exceed the ECMC Table 915-1 limit(s), but are within 1.25x background concentrations.
- 2.** Bold faced values exceed the ECMC Table 915-1 limit(s) and native background concentrations.
3. Red & blue highlighted soil analytical values indicate an exceedance of the referenced soil screening level (SSL).
4. Non-detect background results accounted for in the highest background concentration by using the reporting limit.

ECMC = Energy & Carbon Management Commission

(<) = Analytical result is less than the indicated laboratory reporting limit.

mg/kg = Milligrams per kilogram

ft. = Feet

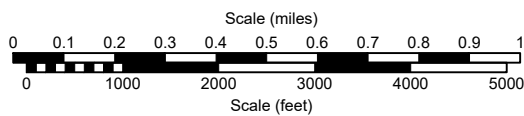
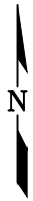
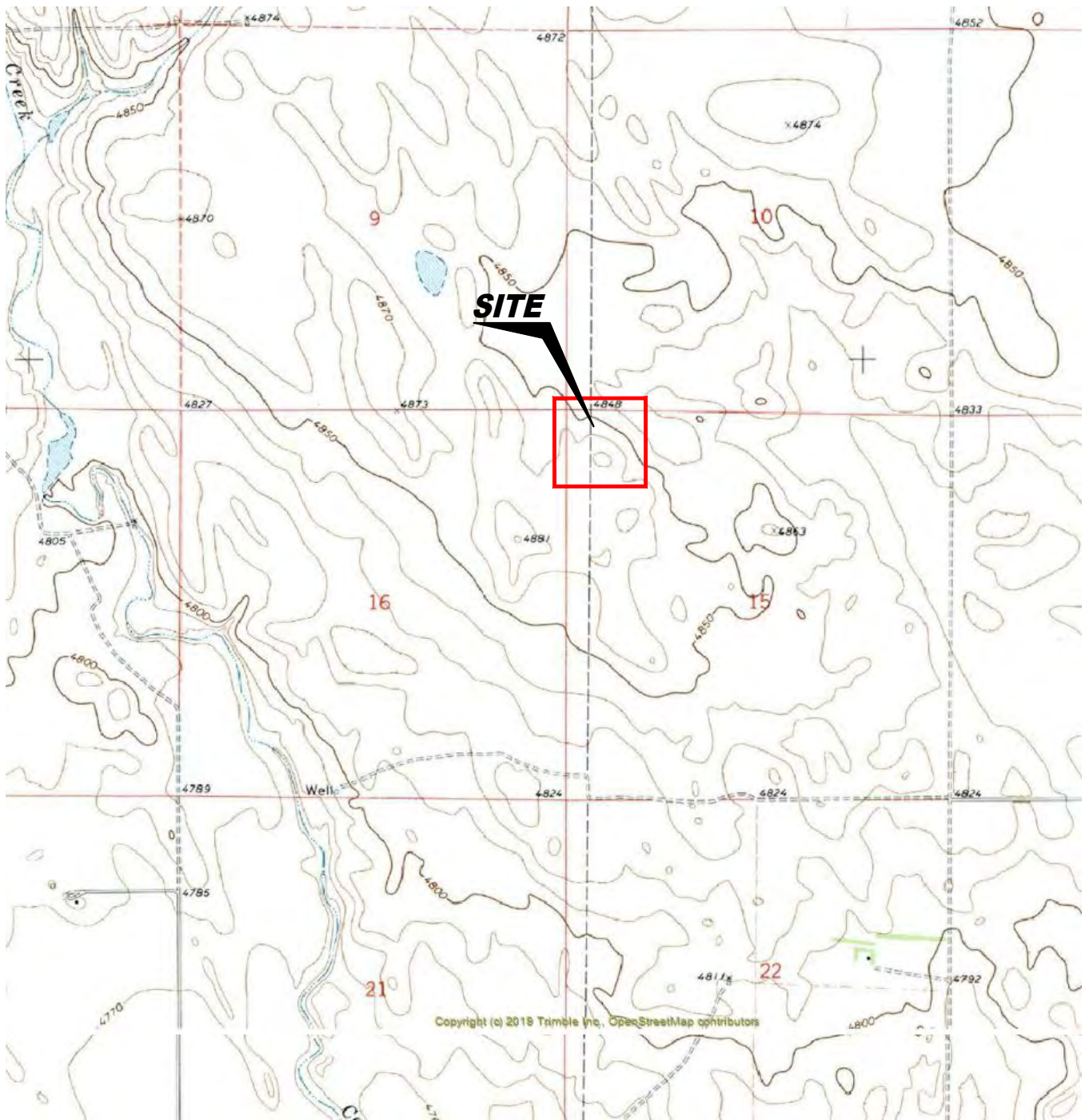
bgs = Below ground surface

* Indicates laboratory minimum detection limit in excess of SSL

NA - Not analyzed/Not applicable

Source material characterization sample, excavated and transported off site for disposal.

Material excavated and transported off site for disposal.



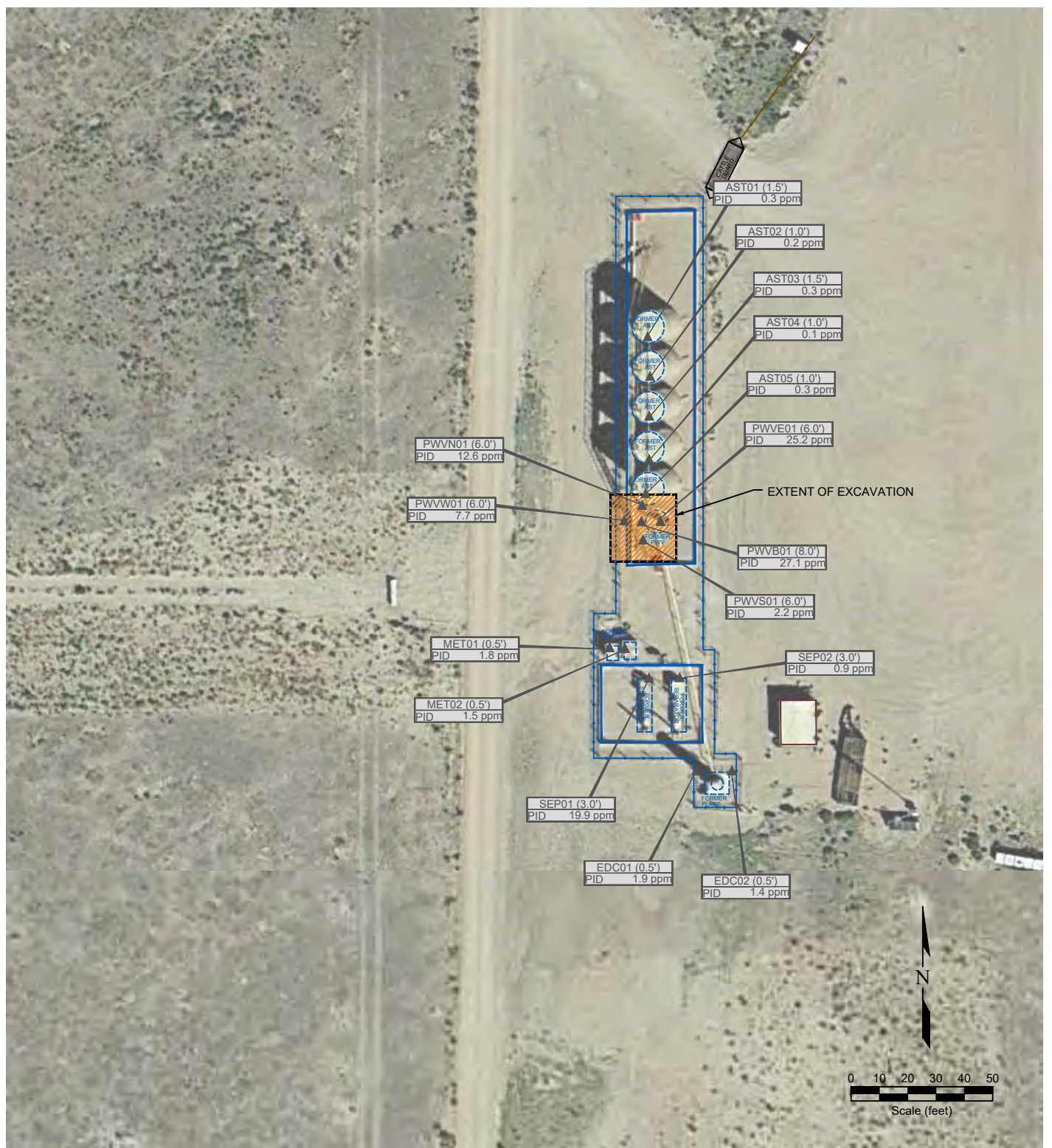
USGS 7.5 MINUTE SERIES (TOPOGRAPHIC)

Figure 1
SITE LOCATION MAP

Noble Energy, Inc. ~ Ball Ranch AC 15-03
 NWNW Sec. 15, T7N, R63W, 6th PM
 Weld County, Colorado
 40.577687°, -104.430380°

Project # C022-124	API #	Facility # 427188
Date 12/12/24	Remediation # 23764	Filename 22124T





LEGEND

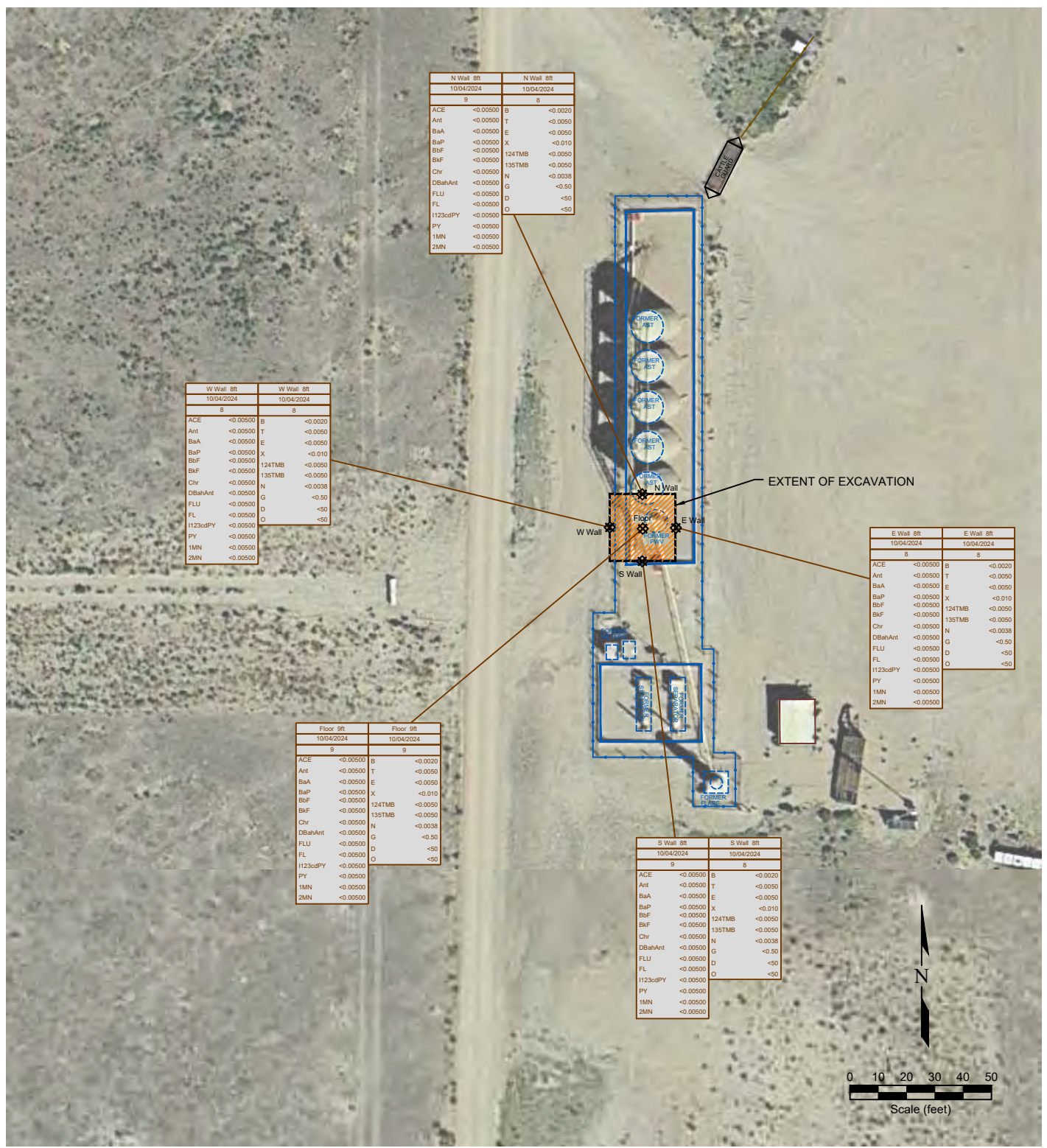
- WELL HEAD LOCATION
- ▲ PID READING LOCATION
- ABOVE GROUND STORAGE TANK
- ▨ AREA OF EXCAVATION
- FORMER FACILITY
- BUILDING
- EXTENT OF EXCAVATION
- FENCE LINE
- CONTAINMENT WALL

**Figure 2
SITE MAP**

Noble Energy, Inc. ~ Ball Ranch AC 15-03
 NWNW Sec. 15, T7N, R63W, 6th PM
 Weld County, Colorado
 40.577687°, -104.430380°

Project No. C022-124	API #	Facility # 427188
Date 12/12/24	Remediation # 23764	Filename 22124Q2





N Wall 8ft 10/04/2024		N Wall 8ft 10/04/2024	
g		g	
ACE	<0.0050	B	<0.0020
Ant	<0.0050	T	<0.0050
BaA	<0.0050	E	<0.0050
BaP	<0.0050	X	<0.010
BbF	<0.0050	124TMB	<0.0050
BkF	<0.0050	135TMB	<0.0050
Chr	<0.0050	N	<0.0038
DBahAnt	<0.0050	G	<0.50
FLU	<0.0050	D	<0.50
FL	<0.0050	O	<0.50
1123cdPY	<0.0050		
PY	<0.0050		
1MN	<0.0050		
2MN	<0.0050		

W Wall 8ft 10/04/2024		W Wall 8ft 10/04/2024	
g		g	
ACE	<0.0050	B	<0.0020
Ant	<0.0050	T	<0.0050
BaA	<0.0050	E	<0.0050
BaP	<0.0050	X	<0.010
BbF	<0.0050	124TMB	<0.0050
BkF	<0.0050	135TMB	<0.0050
Chr	<0.0050	N	<0.0038
DBahAnt	<0.0050	G	<0.50
FLU	<0.0050	D	<0.50
FL	<0.0050	O	<0.50
1123cdPY	<0.0050		
PY	<0.0050		
1MN	<0.0050		
2MN	<0.0050		

E Wall 8ft 10/04/2024		E Wall 8ft 10/04/2024	
g		g	
ACE	<0.0050	B	<0.0020
Ant	<0.0050	T	<0.0050
BaA	<0.0050	E	<0.0050
BaP	<0.0050	X	<0.010
BbF	<0.0050	124TMB	<0.0050
BkF	<0.0050	135TMB	<0.0050
Chr	<0.0050	N	<0.0038
DBahAnt	<0.0050	G	<0.50
FLU	<0.0050	D	<0.50
FL	<0.0050	O	<0.50
1123cdPY	<0.0050		
PY	<0.0050		
1MN	<0.0050		
2MN	<0.0050		

Floor 8ft 10/04/2024		Floor 8ft 10/04/2024	
g		g	
ACE	<0.0050	B	<0.0020
Ant	<0.0050	T	<0.0050
BaA	<0.0050	E	<0.0050
BaP	<0.0050	X	<0.010
BbF	<0.0050	124TMB	<0.0050
BkF	<0.0050	135TMB	<0.0050
Chr	<0.0050	N	<0.0038
DBahAnt	<0.0050	G	<0.50
FLU	<0.0050	D	<0.50
FL	<0.0050	O	<0.50
1123cdPY	<0.0050		
PY	<0.0050		
1MN	<0.0050		
2MN	<0.0050		

S Wall 8ft 10/04/2024		S Wall 8ft 10/04/2024	
g		g	
ACE	<0.0050	B	<0.0020
Ant	<0.0050	T	<0.0050
BaA	<0.0050	E	<0.0050
BaP	<0.0050	X	<0.010
BbF	<0.0050	124TMB	<0.0050
BkF	<0.0050	135TMB	<0.0050
Chr	<0.0050	N	<0.0038
DBahAnt	<0.0050	G	<0.50
FLU	<0.0050	D	<0.50
FL	<0.0050	O	<0.50
1123cdPY	<0.0050		
PY	<0.0050		
1MN	<0.0050		
2MN	<0.0050		

LEGEND

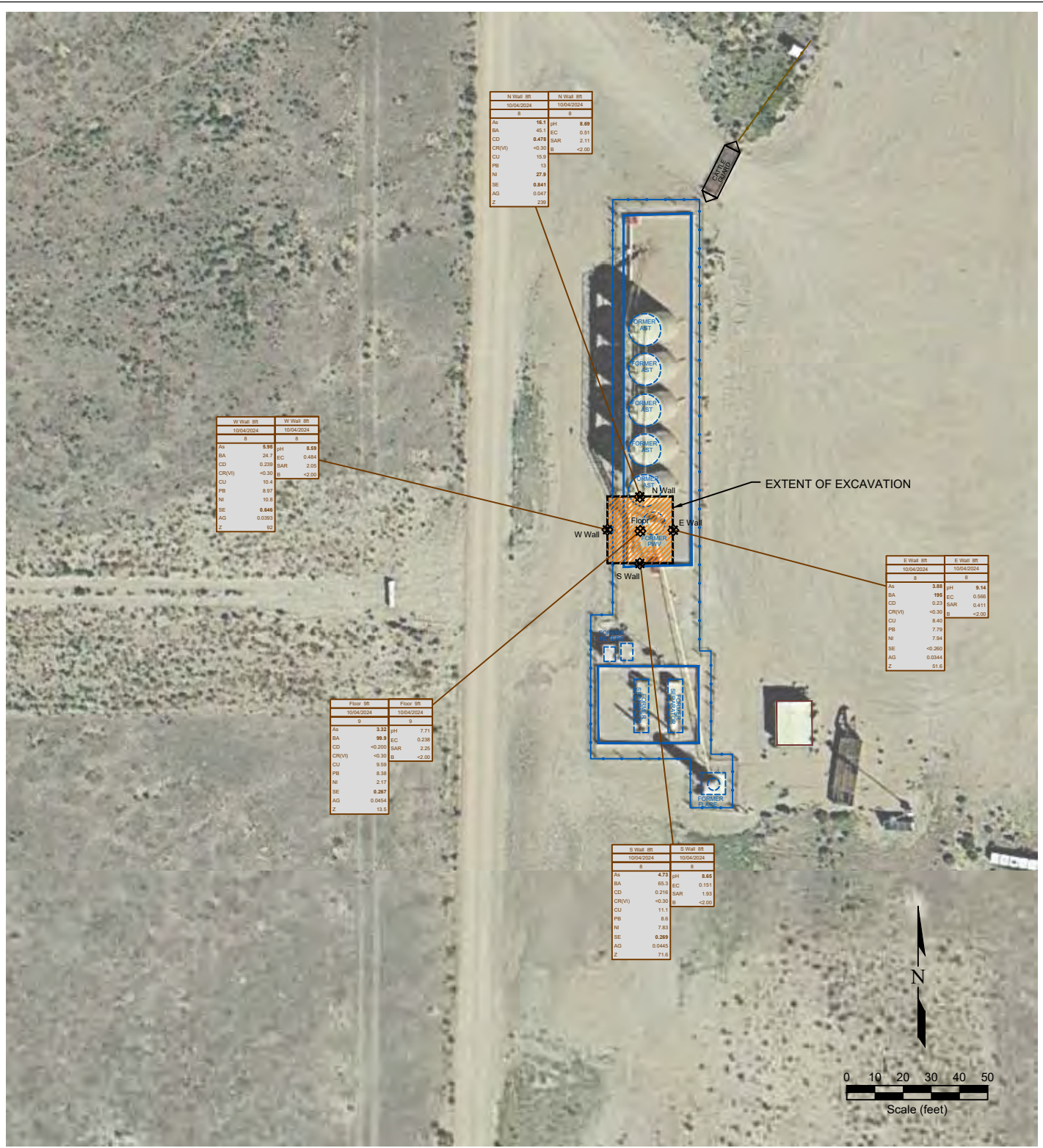
- WELL HEAD LOCATION
- ABOVE GROUND STORAGE TANK
- FORMER FACILITY
- EXTENT OF EXCAVATION
- ⊛ SOIL SAMPLE LOCATION
- ▨ AREA OF EXCAVATION
- ▭ BUILDING
- FENCE LINE
- CONTAINMENT WALL

SAMPLE ID	SAMPLE ID	SAMPLE ID	SAMPLE ID		
DATE	DATE SAMPLED	DATE	DATE SAMPLED		
DEPTH (ft)	DEPTH (ft)	DEPTH (ft)	DEPTH (ft)		
ACE	<0.0050	ACENAPHTHENE (mg/kg)	B	<0.0020	BENZENE (mg/kg)
Ant	<0.0050	ANTHRACENE (mg/kg)	T	<0.0050	TOLUENE (mg/kg)
BaA	<0.0050	BENZO (A) ANTHRACENE (mg/kg)	E	<0.0050	ETHYLBENZENE (mg/kg)
BaP	<0.0050	BENZO (A) PYRENE (mg/kg)	X	<0.010	TOTAL XYLENES (mg/kg)
BbF	<0.0050	BENZO (B) FLUORANTHENE (mg/kg)	124TMB	<0.0050	1,2,4-TRIMETHYLBENZENE (mg/kg)
BkF	<0.0050	BENZO (K) FLUORANTHENE (mg/kg)	135TMB	<0.0050	1,3,5-TRIMETHYLBENZENE (mg/kg)
Chr	<0.0050	CHRYSENE (mg/kg)	N	<0.0038	NAPHTHALENE (mg/kg)
DBahAnt	<0.0050	DBENZ (A,H) ANTHRACENE (mg/kg)	G	<0.50	TPH-CRO (mg/kg)
FLU	<0.0050	FLUORANTHENE (mg/kg)	D	<0.50	TPH-CRO (mg/kg)
FL	<0.0050	FLUORENE (mg/kg)	O	<0.50	TPH-CRO (mg/kg)
1123cdPY	<0.0050	1,2,3-CD (PYRENE) (mg/kg)			
PY	<0.0050	PYRENE (mg/kg)			
1MN	<0.0050	1-METHYLNAPHTHALENE (mg/kg)			
2MN	<0.0050	2-METHYLNAPHTHALENE (mg/kg)			

Figure 3
ORGANIC SOIL CHEMISTRY MAP

Noble Energy, Inc. ~ Ball Ranch AC 15-03
NWNW Sec. 15, T7N, R63W, 6th PM
Weld County, Colorado
40.577687°, -104.430380°

Project No. C022-124	API #	Facility # 427188
Date 12/12/24	Remediation # 23764	Filename 22124Q2



LEGEND

- WELL HEAD LOCATION
- ABOVE GROUND STORAGE TANK
- ⊗ SOIL SAMPLE LOCATION
- FORMER FACILITY
- EXTENT OF EXCAVATION
- FENCE LINE
- CONTAINMENT WALL
- AREA OF EXCAVATION
- BUILDING

SAMPLE DATE	SAMPLE ID	SAMPLE DATE	SAMPLE ID
DEPTH (ft)	DEPTH (ft)	DEPTH (ft)	DEPTH (ft)
<0.01	ARSENIC (mg/kg)	<0.00	pH (pH units)
<0.01	BARIUM (mg/kg)	7.00	EC (mmhos/cm)
<0.01	CADMIUM (mg/kg)	<1	SAR (unit)
<0.01	CHROMIUM (mg/kg)	<0	BORON (mg/L)
<0.01	COPPER (mg/kg)		
<0.01	LEAD (mg/kg)		
<0.01	NICKEL (mg/kg)		
<0.1	SELENIUM (mg/kg)		
<0.01	SILVER (mg/kg)		
<0.01	ZINC (mg/kg)		

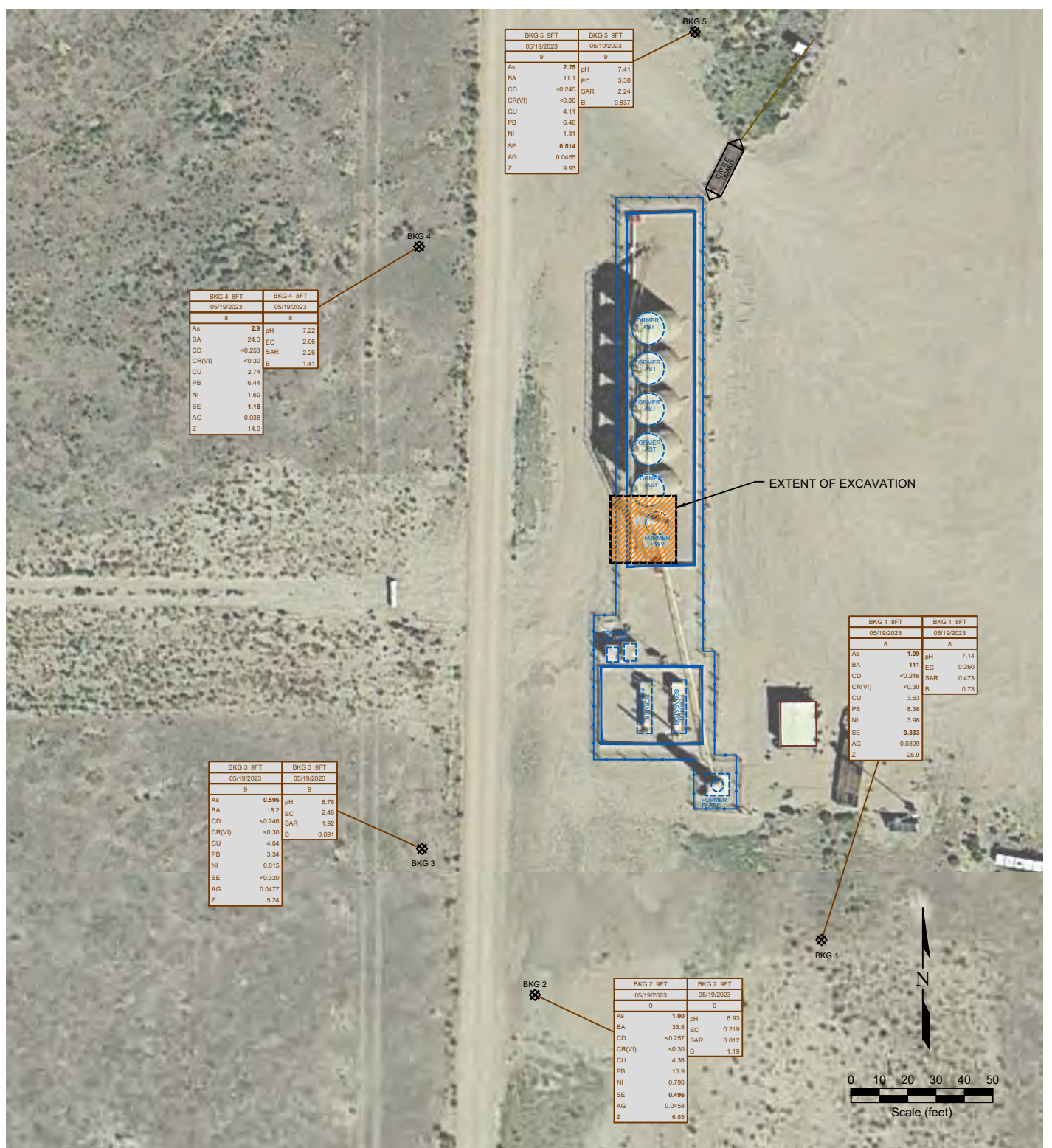
Figure 4

METALS AND INORGANIC SOIL CHEMISTRY MAP

Noble Energy, Inc. ~ Ball Ranch AC 15-03
 NWNW Sec. 15, T7N, R63W, 6th PM
 Weld County, Colorado
 40.577687°, -104.430380°

Project No. C022-124	API #	Facility # 427188
Date 12/12/24	Remediation # 23764	Filename 22124Q2





LEGEND

- WELL HEAD LOCATION
- ABOVE GROUND STORAGE TANK
- ⊗ SOIL SAMPLE LOCATION
- FORMER FACILITY
- AREA OF EXCAVATION
- BUILDING
- EXTENT OF EXCAVATION
- FENCE LINE
- CONTAINMENT WALL

SAMPLE	SAMPLE ID	DATE SAMPLED	DEPTH (ft)	SAMPLE	SAMPLE ID	DATE SAMPLED	DEPTH (ft)
As	<0.01	ARSENIC (mg/kg)	pH	<500	pH (gH units)		
BA	<0.01	BARIUM (mg/kg)	EC	7.00	EC (microsiemens)		
CD	<0.01	CADMIUM (mg/kg)	SAR	-1	SAR (unitless)		
CR(VI)	<0.01	CHROMIUM (mg/kg)	B	<0.01	BORON (mg/L)		
CU	<0.01	COPPER (mg/kg)					
PB	<0.01	LEAD (mg/kg)					
NI	<0.01	NICKEL (mg/kg)					
SE	<0.01	SELENIUM (mg/kg)					
AG	<0.01	SILVER (mg/kg)					
Z	<0.01	ZINC (mg/kg)					

Figure 5
BACKGROUND SAMPLE SOIL CHEMISTRY MAP

Noble Energy, Inc. ~ Ball Ranch AC 15-03
 NWNW Sec. 15, T7N, R63W, 6th PM
 Weld County, Colorado
 40.577687°, -104.430380°

Project No. C022-124	API #	Facility # 427188	
Date 12/12/24	Remediation # 23764	Filename 22124Q2	