

Project: Mesa County, CO
 Site: Laramie 0993-29-01
 Well: Laramie 29-01 Fed 0993-21-13W
 Wellbore: OH
 Design: Design #2
 Latitude: 39.254694
 Longitude: -107.784039
 Ground Level: 7463.0
 RKB=30' @ 7493.0usft (TBD)

PROJECT DETAILS: Mesa County, CO

Geodetic System: US State Plane 1983
 Datum: North American Datum 1983
 Ellipsoid: GRS 1980
 Zone: Colorado Central Zone
 System Datum: Mean Sea Level

REFERENCE INFORMATION

Vertical (TVD) Reference: RKB=30' @ 7493.0usft (TBD)
 Section (VS) Reference: Slot - A4(0.0N, 0.0E)
 Measured Depth Reference: RKB=30' @ 7493.0usft (TBD)
 Calculation Method: Minimum Curvature

SECTION DETAILS

MD	Inc	Azi	TVD	+N/-S	+E/-W	Dleg	TFace	Vsect	Annotation
0.0	0.00	0.00	0.0	0.0	0.0	0.00	0.00	0.0	
225.0	0.00	0.00	225.0	0.0	0.0	0.00	0.00	0.0	KOP (Build 2.5° / 100)
1468.8	31.09	45.59	1408.6	230.4	235.3	2.50	45.59	329.3	EOB @ 31.09° Inc. / 45.59° Azm
5582.5	31.09	45.59	4931.4	1717.1	1753.1	0.00	0.00	2453.3	Drop 2.5° / 100'
6826.4	0.00	0.00	6115.0	1947.5	1988.3	2.50	180.00	2783.2	EOD @ Vertical
9418.4	0.00	0.00	8707.0	1947.5	1988.3	0.00	0.00	2783.2	TD @ 9418.4' MD / 8707.0' TVD

FORMATION TOP DETAILS

TVDPath	MDPath	Formation
2739.0	3022.4	Wasatch 'G' Sand
3221.0	3585.3	Fort Union
3901.0	4379.4	Lower Wasatch
4684.0	5293.8	Ohio Creek
5092.0	5766.0	Williams Fork
6115.0	6826.4	TOG
7314.0	8025.4	Cameo
7640.0	8351.4	Rollins
8184.0	8895.4	Cozzette
8357.0	9068.4	Corcoran

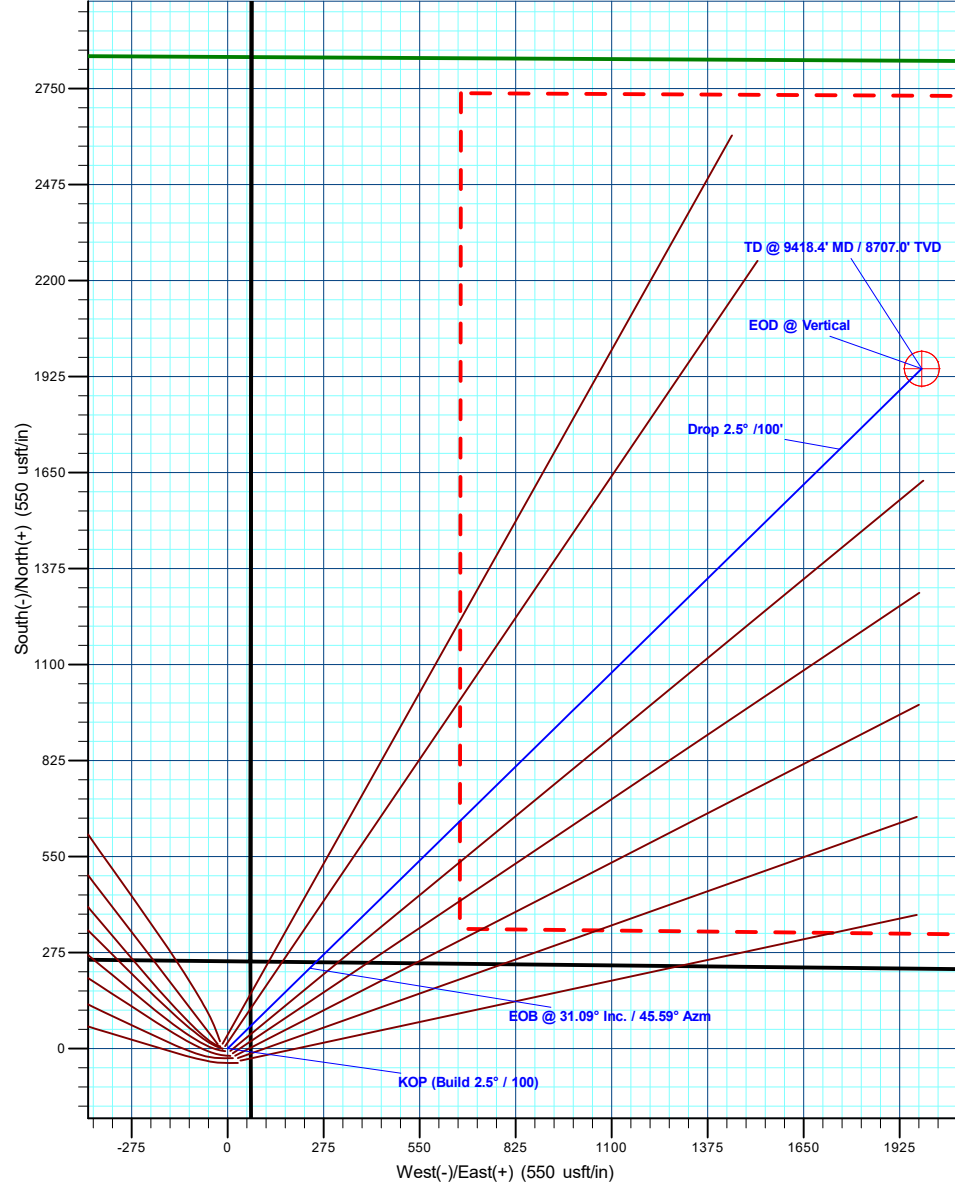
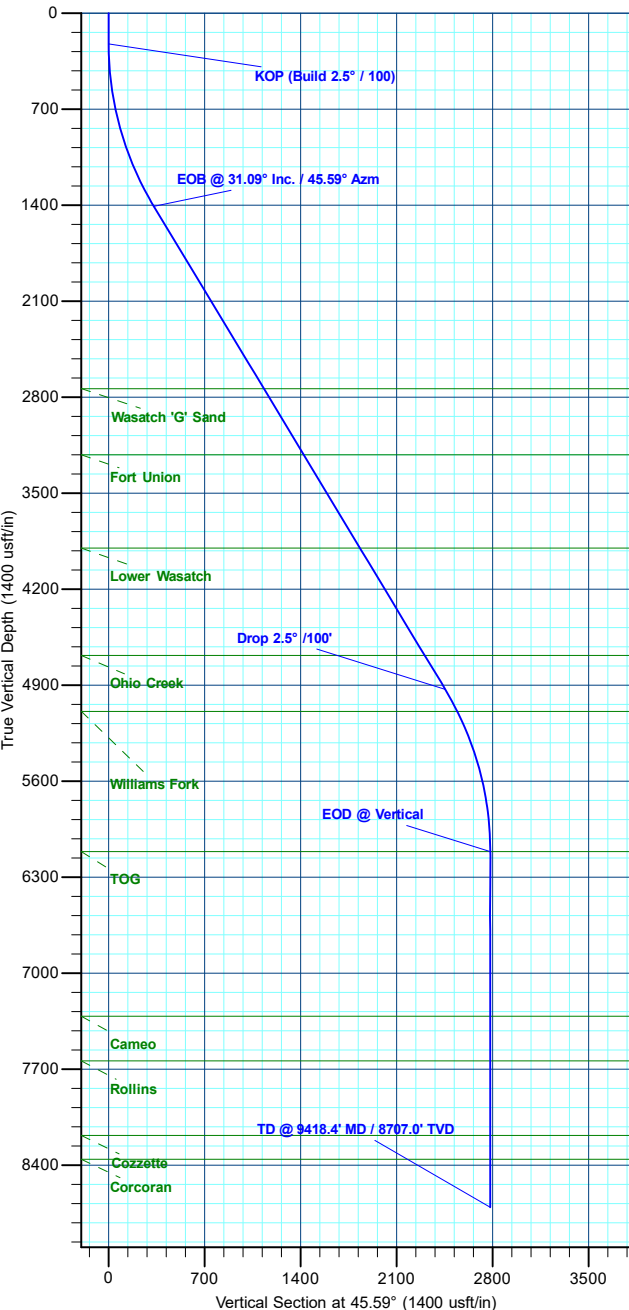
T M
 Azimuths to True North
 Magnetic North: 8.67°
 Magnetic Field
 Strength: 50830.0nT
 Dip Angle: 65.10°
 Date: 8/7/2023
 Model: HDGM2025

DESIGN TARGET DETAILS

Name	TVD	+N/-S	+E/-W	Northing	Easting	Latitude	Longitude
PBHL - Laramie Fed 21-13W	8707.0	1947.5	1988.3	1527683.42	2355338.12	39.260041	-107.777017

WELL DETAILS: Laramie 29-01 Fed 0993-21-13W

+N/-S	+E/-W	Ground Level : 7463.0	Northing	Easting	Latitude	Longitude	A4
0.0	0.0		1525786.50	2353301.45	39.254694	-107.784039	



Plan: Design #2 (Laramie 29-01 Fed 0993-21-13W/OH)

Created By: Will Jircik Date: 11:02, May 08 2025