

Project: Mesa County, CO
 Site: Laramie 0993-29-01
 Well: Laramie 29-01 0993-20-16E
 Wellbore: OH
 Design: Design #2
 Latitude: 39.254636
 Longitude: -107.784012
 Ground Level: 7463.0
 RKB=30' @ 7493.0usft (TBD)

PROJECT DETAILS: Mesa County, CO

Geodetic System: US State Plane 1983
 Datum: North American Datum 1983
 Ellipsoid: GRS 1980
 Zone: Colorado Central Zone
 System Datum: Mean Sea Level

REFERENCE INFORMATION

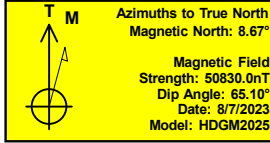
Vertical (TVD) Reference: RKB=30' @ 7493.0usft (TBD)
 Section (VS) Reference: Slot - B6(0.0N, 0.0E)
 Measured Depth Reference: RKB=30' @ 7493.0usft (TBD)
 Calculation Method: Minimum Curvature

SECTION DETAILS

MD	Inc	Azi	TVD	+N/-S	+E/-W	Dleg	TFace	V Sect	Annotation
0.0	0.00	0.00	0.0	0.0	0.0	0.00	0.00	0.0	
260.0	0.00	0.00	260.0	0.0	0.0	0.00	0.00	0.0	KOP (Build 2.5' / 100')
580.0	8.00	275.00	579.0	1.9	-22.2	2.50	275.00	19.9	EOB @ 8.00' Inc. / 275.00° Azm : Build 2.5' / 100'
1306.9	24.88	302.88	1274.5	90.1	-202.6	2.50	39.10	219.5	EOB @ 24.88' Inc. / 302.88° Azm
5508.2	24.88	302.88	5085.8	1049.6	-1687.0	0.00	0.00	1986.9	Drop 2.5' / 100'
6503.4	0.00	0.00	6050.0	1165.0	-1865.7	2.50	180.00	2199.6	EOD @ Vertical
9095.4	0.00	0.00	8642.0	1165.0	-1865.7	0.00	0.00	2199.6	TD @ 9095.4' MD / 8642.0' TVD

FORMATION TOP DETAILS

TVDPATH	MDPATH	FORMATION
2674.0	2849.7	Wasatch 'G' Sand
3156.0	3381.0	Fort Union
3836.0	4130.5	Lower Wasatch
4619.0	4993.6	Ohio Creek
5027.0	5443.4	Williams Fork
6050.0	6503.4	TOG
7249.0	7702.4	Cameo
7575.0	8028.4	Rollins
8119.0	8572.4	Cozzette
8292.0	8745.4	Corcoran

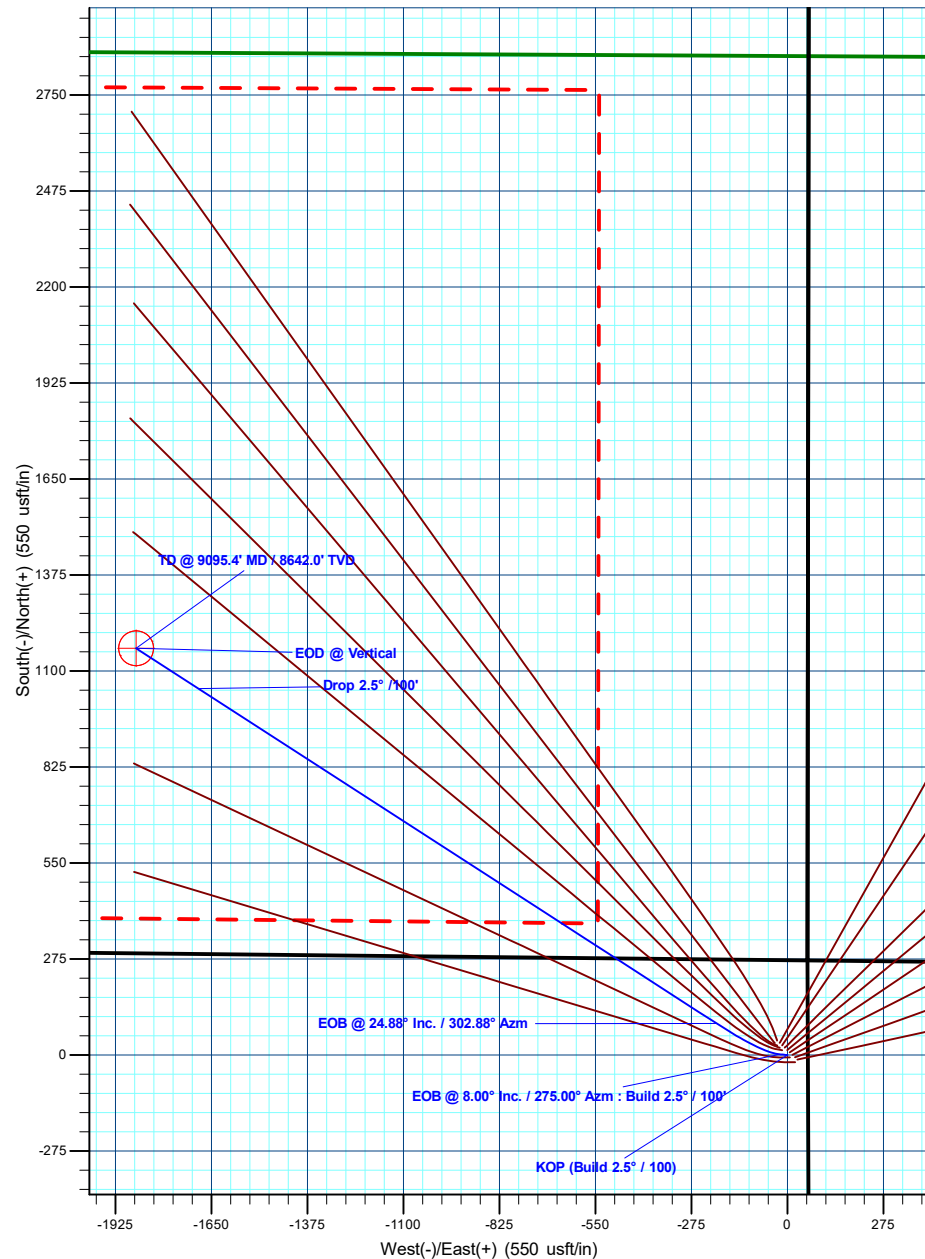
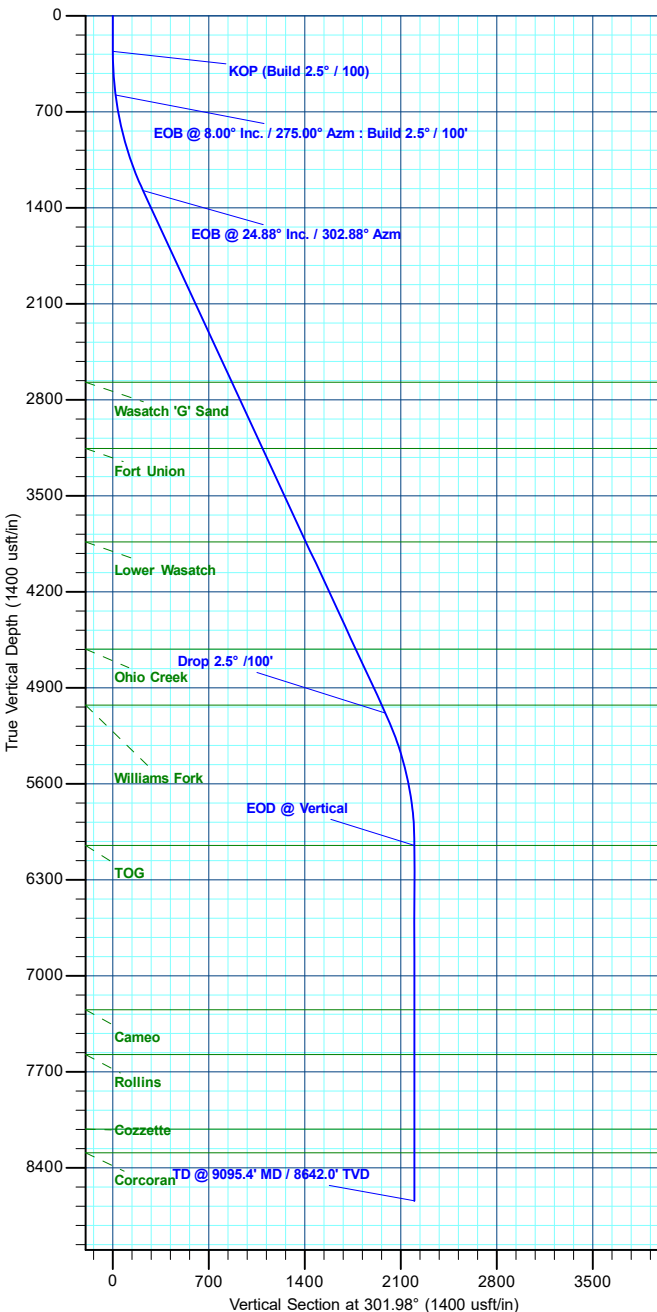


DESIGN TARGET DETAILS

Name	TVD	+N/-S	+E/-W	Northing	Easting	Latitude	Longitude
PBHL - Laramie 20-16E	8642.0	1165.0	-1865.7	1526976.89	2351472.81	39.257835	-107.790601

WELL DETAILS: Laramie 29-01 0993-20-16E

+N/-S	+E/-W	Ground Level	Northing	Easting	Latitude	Longitude	B6
0.0	0.0	7463.0	1525765.32	2353308.62	39.254636	-107.784012	B6



Plan: Design #2 (Laramie 29-01 0993-20-16E/OH)

Created By: Will Jircik

Date: 10:39, May 08 2025