

Figure 1
Site Location
DILLARD USX AB03-05P
SWNW-SEC 3-T7N-R64W
Weld County, Colorado
Chevron

 Site Location

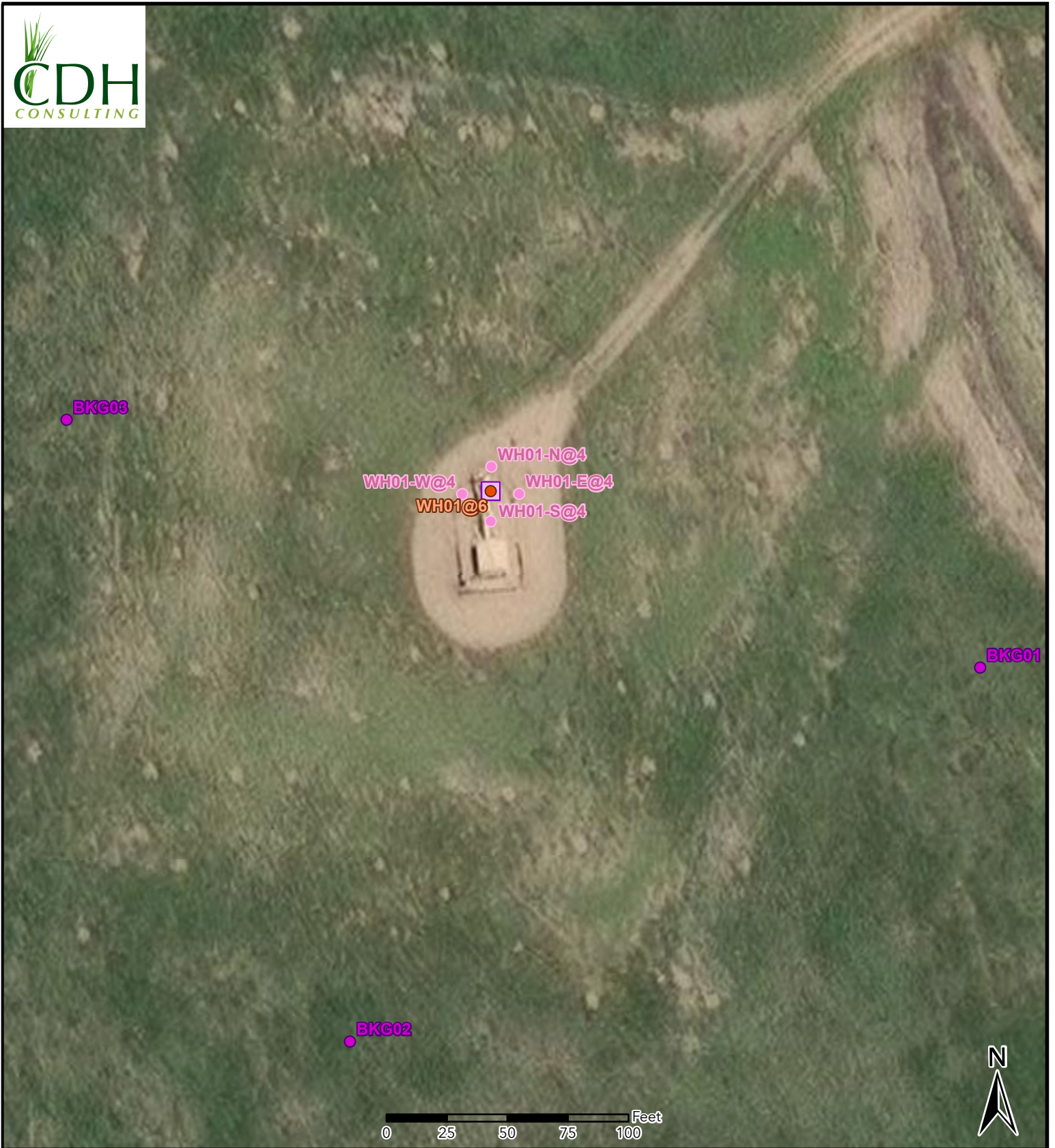






Figure 2
Soil Sample Location Map
DILLARD USX AB03-05P
 SWNW-SEC 3-T7N-R64W
 Weld County, Colorado
 Chevron

-  Site Location
-  Soil Sample
-  Background Sample
-  Screening Point

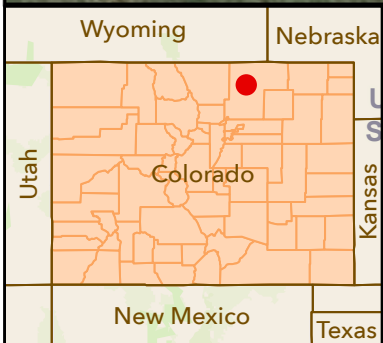
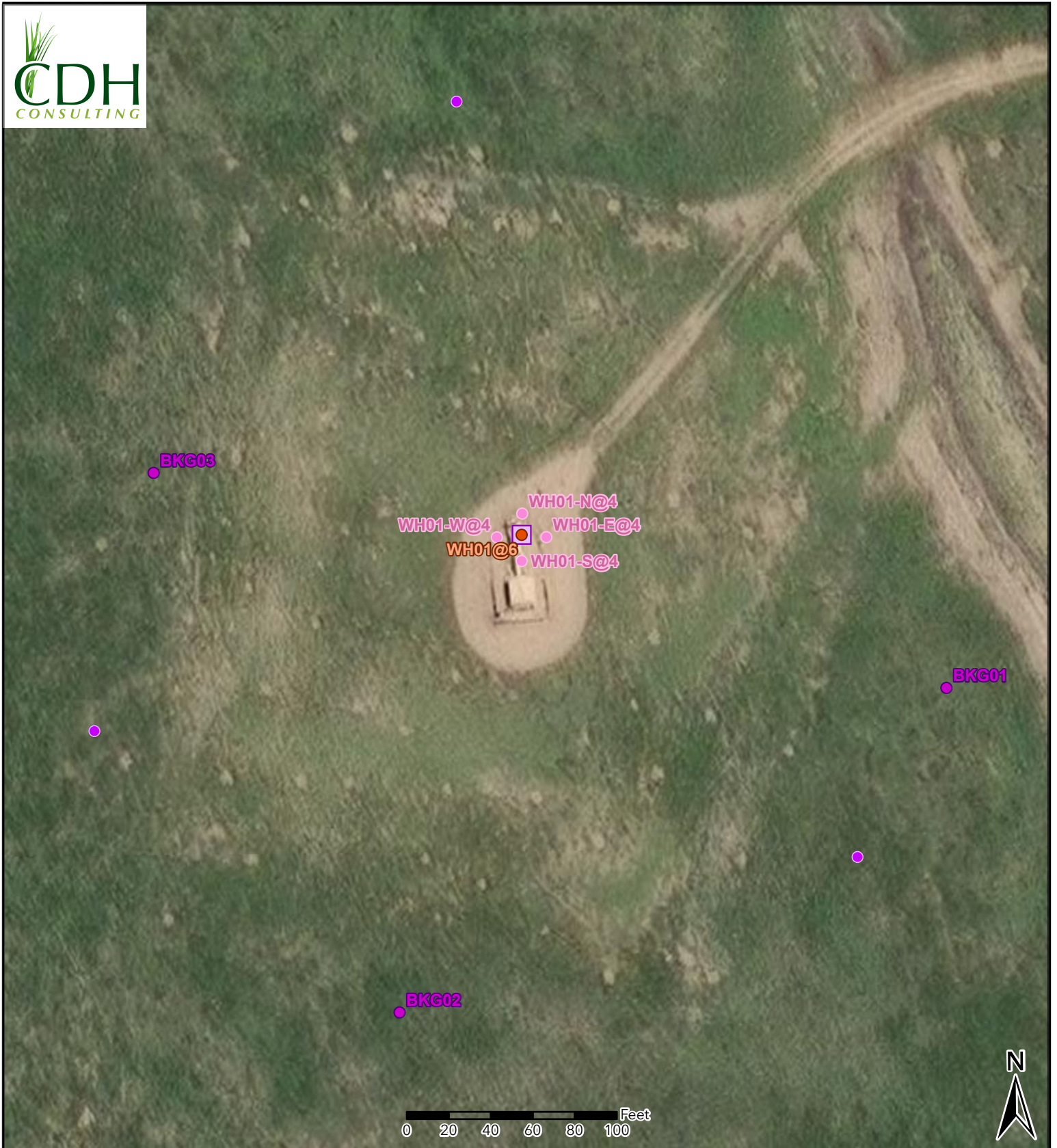


Figure 3
Supplemental Site Investigation Map
DILLARD USX AB03-05P
 SWNW-SEC 3-T7N-R64W
 Weld County, Colorado
 Chevron






-  Site Location
-  Soil Sample
-  Background Sample
-  Screening Point
-  Proposed Background Sample

TABLE 1
FIELD DATA SUMMARY TABLE
NOBLE 100322
DILLARD USX AB03-05P WELLHEAD, WELD COUNTY, COLORADO
REM # 35670

Sample ID	Sample Date	Depth (ft)	GPS Data		VOC Concentration (ppm)
			Latitude	Longitude	
WH01@6	6/21/2024	6	40.603940	-104.542380	23.1
WH01-W@4	6/21/2024	4	40.603937	-104.542423	8.0
WH01-S@4	6/21/2024	4	40.603906	-104.542381	2.9
WH01-N@4	6/21/2024	4	40.603968	-104.542379	28.7
WH01-E@4	6/21/2024	4	40.603937	-104.542338	25.7
BKG01@4'	3/12/2025	4	40.6037274	-104.5416445	NM
BKG01@6'	3/12/2025	6	40.6037274	-104.5416445	NM
BKG02@4'	3/12/2025	4	40.6033110	-104.5425881	NM
BKG02@6'	3/12/2025	6	40.603311	-104.5425881	NM
BKG03@4'	3/12/2025	4	40.604020	-104.5429997	NM
BKG03@6'	3/12/2025	6	40.604020	-104.5429997	NM

1. Global Positioning System (GPS) data is provided in decimal degrees using North American Datum (NAD) 83 UTMZone 13 North.

2. Volatile organic compound (VOC) concentrations are measured in the field using a photoionization detector (PID).

PDOP = Position Dilution of Precision

ppm = Parts per million

NM = Not Measured

ft = Feet

TABLE 2
SUMMARY OF VOLATILE ORGANIC SOIL CHEMISTRY DATA
NOBLE 100322
DILLARD USX AB03-05P WELLHEAD, WELD COUNTY, COLORADO
REM # 35670

Sample ID	Sample Date	Depth (ft)	Benzene (mg/kg)	Toluene (mg/kg)	Ethyl-Benzene (mg/kg)	Xylenes (mg/kg)	1,2,4- Trimethyl- Benzene (mg/kg)	1,3,5- Trimethyl- Benzene (mg/kg)	Naphthalene (mg/kg)	TPH (mg/kg)	TPH GRO (mg/kg)	TPH DRO (mg/kg)	TPH ORO (mg/kg)
ECMC Table 915-1 Limits (Residential SSL)			1.2	490	5.8	58	30	27	2	500	500**		
ECMC Table 915-1 Limits (Protection of Groundwater SSL)			0.0026	0.69	0.78	9.9	0.0081	0.0087	0.0038	500	500**		
WH01@6	6/21/2024	6	<0.00200	<0.00200	<0.00200	<0.00200	<0.00200	<0.00200	<0.002	<125.200	<0.200	<25.0	<100
WH01-W@4	6/21/2024	4	<0.00200	<0.00200	<0.00200	<0.00200	<0.00200	<0.00200	<0.002	<125.200	<0.200	<25.0	<100

1. Bold values exceed the ECMC Table 915-1 limit(s)
 2. Red & blue highlighted soil analytical values indicate an exceedance of the referenced soil screening level (SSL)
 3. * Indicates laboratory minimum detection limit in excess of SSL
 4. ** Summation of GRO+DRO+ORO must be less than 500 mg/kg
- (<) = Analytical result is less than the indicated laboratory reporting limit.
TPH-GRO = Total petroleum hydrocarbons - gasoline range organics
TPH-DRO = Total petroleum hydrocarbons - diesel range organics
TPH-ORO = Total petroleum hydrocarbons - oil range organics
mg/kg = Milligrams per kilogram
ft = Feet
AP = Analysis pending
NA = Not analyzed

TABLE 3
SUMMARY OF POLYCYCLIC AROMATIC HYDROCARBON SOIL CHEMISTRY DATA
NOBLE 100322
DILLARD USX AB03-05P WELLHEAD, WELD COUNTY, COLORADO
REM # 35670

Sample ID	Sample Date	Depth (ft)	Acenaphthene (mg/kg)	Anthracene (mg/kg)	Benzo (a) Anthracene (mg/kg)	Benzo (a) Pyrene (mg/kg)	Benzo (b) Fluoranthene (mg/kg)	Benzo (k) Fluoranthene (mg/kg)	Chrysene (mg/kg)	Dibenzo (a,h) Anthracene (mg/kg)	Fluoranthene (mg/kg)	Fluorene (mg/kg)	Indeno (1,2,3-cd) Pyrene (mg/kg)	Pyrene (mg/kg)	1-Methyl - Naphthalene (mg/kg)	2-Methyl - Naphthalene (mg/kg)
ECMC Table 915-1 Limits (Residential SSL)			360	1800	1.1	0.11	1.1	11	110	0.11	240	240	1.1	180	18	24
ECMC Table 915-1 Limits (Protection of Groundwater SSL)			0.55	5.8	0.011	0.24	0.3	2.9	9	0.096	8.9	0.54	0.98	1.3	0.006	0.019
WH01@6	6/21/2024	6	<0.020	<0.020	<0.005	<0.020	<0.020	<0.020	<0.020	<0.020	<0.020	<0.020	<0.020	<0.020	<0.002	<0.002
WH01-W@4	6/21/2024	4	<0.020	<0.020	<0.005	<0.020	<0.020	<0.020	<0.020	<0.020	<0.020	<0.020	<0.020	<0.020	<0.002	<0.002

1. Bold values exceed the ECMC Table 915-1 limit(s)

2. Red & blue highlighted soil analytical values indicate an exceedance of the referenced soil screening level (SSL)

3. * Indicates laboratory minimum detection limit in excess of SSL

4. ** Summation of GRO+DRO+ORO must be less than 500 mg/kg

(<) = Analytical result is less than the indicated laboratory reporting limit.

TPH-GRO = Total petroleum hydrocarbons - gasoline range organics

TPH-DRO = Total petroleum hydrocarbons - diesel range organics

TPH-ORO = Total petroleum hydrocarbons - oil range organics

mg/kg = Milligrams per kilogram

ft = Feet

AP = Analysis pending

NA = Not analyzed

TABLE 4
SUMMARY OF SOIL SUITABILITY FOR RECLAMATION
NOBLE 100322
DILLARD USX AB03-05P WELLHEAD, WELD COUNTY, COLORADO
REM # 35670

Sample ID	Sample Date	Depth (ft)	pH (Standard Units)	EC (mmhos/cm)	SAR (Standard Units)	Boron (mg/L)
ECMC Table 915-1 Soil Suitability Limits			6 - 8.3	<4	<6	2
WH01@6	6/21/2024	6	8.58	0.376	4.35	0.336
WH01-W@4	6/21/2024	4	8.94	1	2.07	0.374
BKG01@4'	3/12/2025	4	8.08	4.63	6.20	2.03
BKG01@6'	3/12/2025	6	8.31	2.50	7.87	0.646
BKG02@4'	3/12/2025	4	8.22	2.64	5.93	0.902
BKG02@6'	3/12/2025	6	8.30	2.83	9.88	0.902
BKG03@4'	3/12/2025	4	8.35	0.640	1.87	0.610
BKG03@6'	3/12/2025	6	8.61	0.392	6.38	0.502
Maximum Background Concentration			8.61	4.63	9.88	2.03

1. **Bold** faced values exceed the ECMC Table 915-1 limit(s), but are within background concentrations.
2. **Bold** faced values exceed the ECMC Table 915-1 limit(s) and native background concentrations.
3. Brown highlighted soil analytical values indicate a regulatory exceedance.

AP = Analysis pending

NA = Not analyzed

TABLE 5
SUMMARY OF METALS IN SOIL CHEMISTRY DATA
NOBLE 100322
DILLARD USX AB03-05P WELLHEAD, WELD COUNTY, COLORADO
REM # 35670

Sample ID	Sample Date	Depth (ft)	Arsenic (mg/kg)	Barium (mg/kg)	Cadmium (mg/kg)	Chromium (VI) (mg/kg)	Copper (mg/kg)	Lead (mg/kg)	Nickel (mg/kg)	Selenium (mg/kg)	Silver (mg/kg)	Zinc (mg/kg)
ECMC Table 915-1 Limits (Residential SSL)			0.68	15000	71	0.3	3100	400	1500	390	390	23000
ECMC Table 915-1 Limits (Protection of Groundwater SSL)			0.29	82	0.38	0.00067	46	14	26	0.26	0.8	370
WH01@6	6/21/2024	6	2.96	86.4	0.142	<0.168*	<9.87	7.6	7.22	<0.257	<0.0987	<36.5
WH01-W@4	6/21/2024	4	4.14	148	0.243	<0.151*	11.5	10.1	9.78	<0.226	0.087	43.6
BKG01@4'	3/12/2025	4	4.44	132	0.300	<0.5 *	15.7	15.2	13.8	1.65	0.0929	62.8
BKG01@6'	3/12/2025	6	3.78	118	0.243	<0.5 *	11.0	11.6	10.5	0.461	<0.0927	45.4
BKG02@4'	3/12/2025	4	4.85	96.1	0.291	<0.5 *	10.6	10.6	10.8	0.829	0.109	41.4
BKG02@6'	3/12/2025	6	3.31	64.9	0.224	<0.5 *	9.72	10.3	9.32	0.330	<0.0933	42.3
BKG03@4'	3/12/2025	4	3.09	58.3	0.140	<0.5 *	<8.77	7.16	7.00	<0.228	<0.0877	<32.4
BKG03@6'	3/12/2025	6	2.89	183	0.133	<0.5 *	<9.26	7.51	6.91	<0.241	<0.0926	<34.3
1.25x Maximum Background Concentration			6.06	228.8	0.375	NA	19.6	19.0	17.25	2.06	0.14	78.5

- Bold** faced values exceed the ECMC Table 915-1 limit(s), but are within 1.25x background concentrations.
- Red** faced values exceed the ECMC Table 915-1 limit(s) and native background concentrations.
- Red & blue highlighted soil analytical values indicate an exceedance of the referenced soil screening level (SSL).
- Non-detect background results accounted for in the highest background concentration by using the reporting limit.

ECMC = Energy & Carbon Management Commission

(<) = Analytical result is less than the indicated laboratory reporting limit.

mg/kg = Milligrams per kilogram

ft = Feet

* Indicates laboratory minimum detection limit in excess of SSL

AP = Analysis pending

NA = Not analyzed



Photo Log

DILLARD USX AB03-05P

March 12, 2025

Initial BKG01 Photo



BKG01 Closure Photo



Initial BKG02 Photo



BKG02 Closure Photo



Initial BKG03 Photo



BKG03 Closure Photo

