



Facility Closure Investigation and Environmental Summary

Wolfe USX CC07-25 Wellhead

ECMC Remediation Project #33031

Weld County, Colorado

Attachments:

Figure 1 – General Location Map

Figure 2 – Wellhead Soil Sample and Field Screening Locations

Figure 3 – Supplemental Site Investigation Map

Table 1 – Soil Sample and Field Screening Location Information

Table 2 – Soil Analytical Results Summary Table – Volatile

Organics Table 3 – Soil Analytical Results Summary Table – PAHs

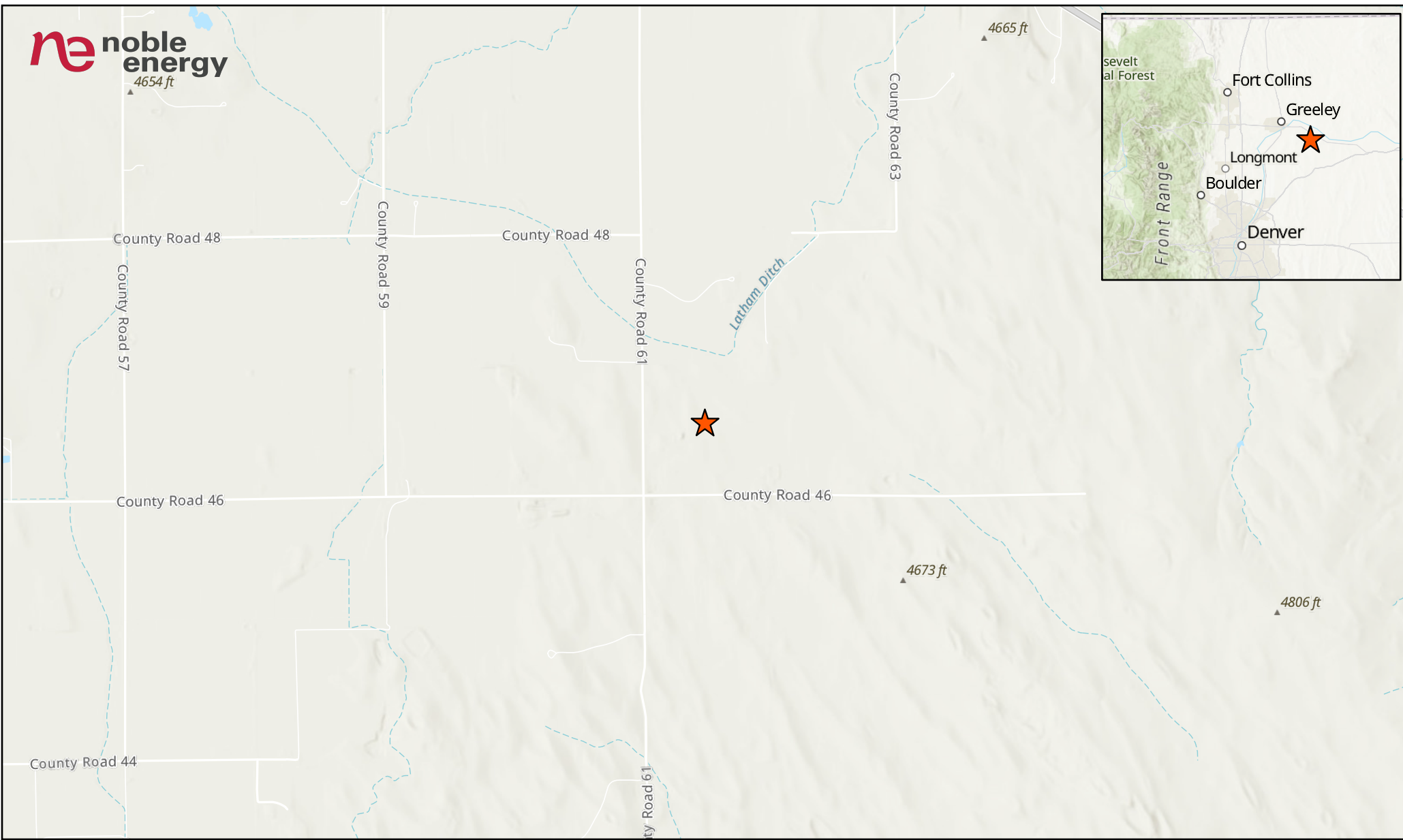
Table 4 – Soil Analytical Results Summary Table – Soil Suitability

Table 5 – Soil Analytical Results Summary Table – Metals

Attachment A: Photographic Log

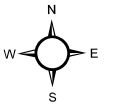
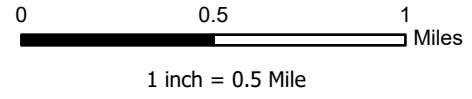
Attachment B: Facility Closure Checklists

FIGURES



LEGEND

 Site Location



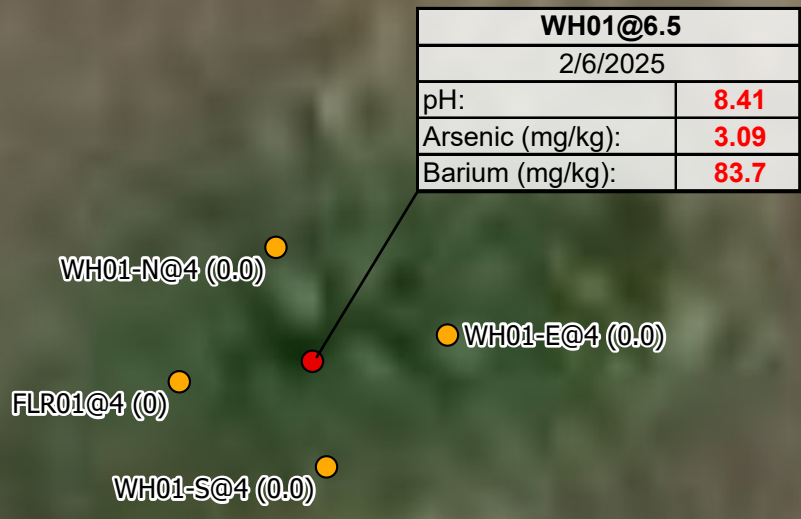
Project No:	024-070
Map By:	JW
Date:	06/01/2024

**WOLFE USX CC07-25 WELLHEAD
GENERAL LOCATION MAP**
NOBLE ENERGY
NE 1/4 SW 1/4 SECTION 7
T4N R63W, 6TH PM
WELD COUNTY, COLORADO



1843 Sunlight Dr.
Longmont, CO 80504
303.378.4036

Figure
1



WH01@6.5	
2/6/2025	
pH:	8.41
Arsenic (mg/kg):	3.09
Barium (mg/kg):	83.7

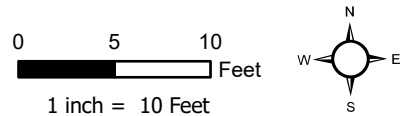
LABEL LEGEND
 XXXX@X: SAMPLE NAME @ DEPTH IN FEET
 WH: WELLHEAD SAMPLE
 FLR: FLOWLINE RISER SAMPLE
BOLD: ABOVE ECMC TABLE 915-1 GWSSL

Maxar, Microsoft

Legend

- Soil Sample
- Screening Location

NOTES:
 - Sample Label (PID Result in ppm)
 - ppm = parts per million
 - PID = photoionization detector



Project No: 024-070
 Map By: JW
 Date: 04/25/2025

**WOLFE USX CC07-25 WELLHEAD
 SOIL SAMPLE AND FIELD SCREENING LOCATIONS**
 NOBLE ENERGY
 NE 1/4 SW 1/4 SECTION 7
 T4N R63W, 6TH PM
 WELD COUNTY, COLORADO



610 Garrison St., Unit T
 Lakewood, CO 80215
 303.378.4036

Figure
 2

Cherwon, Figure 2 - Template Noble Wellhead - Soil Sample and Field Screening Locations

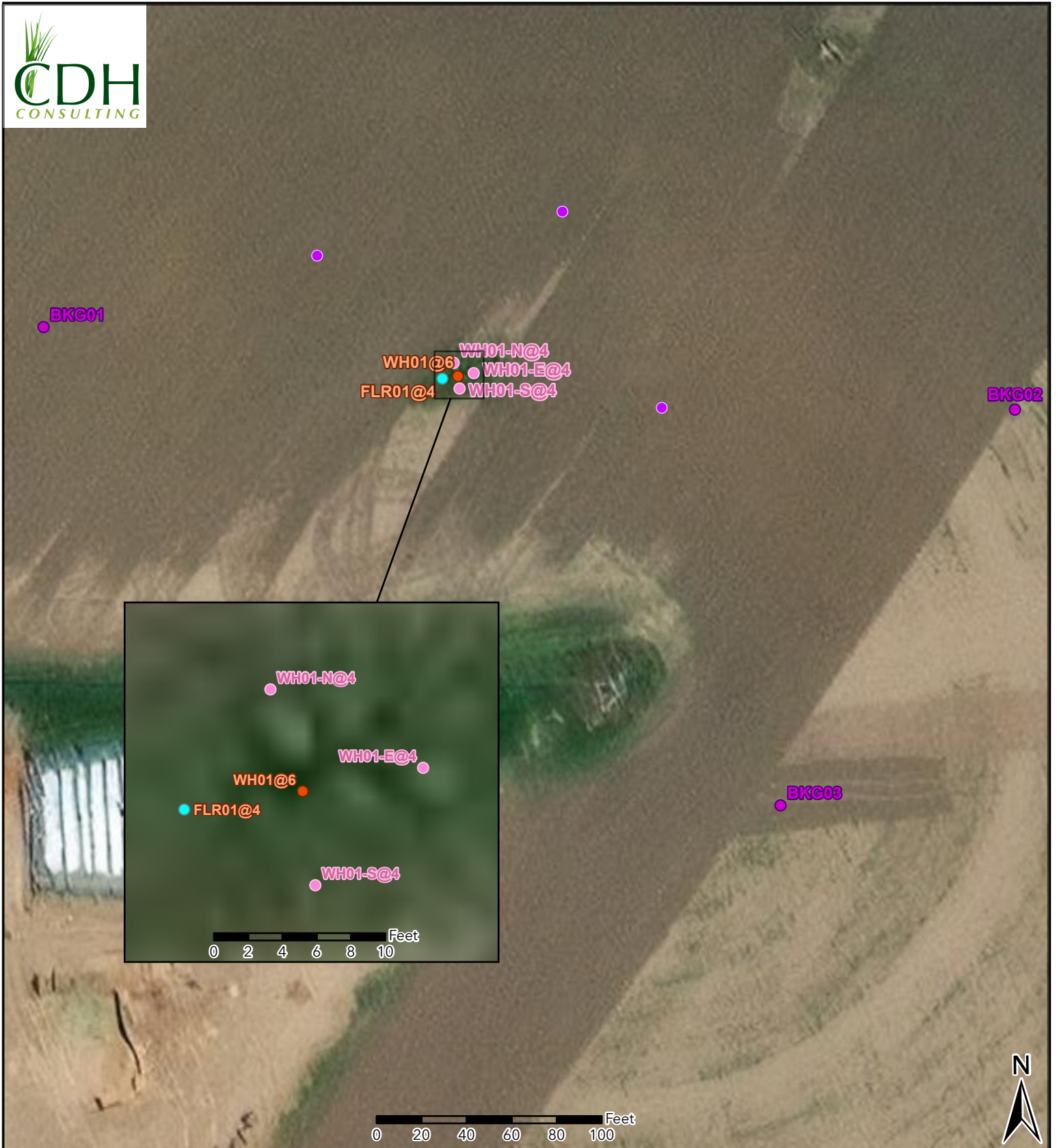


Figure 3
Supplemental Site
Investigation Map
WOLFE USX CC07-25
 NESW-SEC 7-T4N-R63W
 Weld County, Colorado
 Chevron

- Soil Sample
- Background Sample
- Screening Point
- Proposed Flowline Wellhead Riser Soil Sample
- Proposed Background Sample

TABLES

TABLE 1
FIELD DATA SUMMARY TABLE
NOBLE 100322
WOLFE USX CC07-25 WELLHEAD, WELD COUNTY, COLORADO
REM # 33031

Sample ID	Sample Date	Depth (ft-bgs)	GPS Data		VOC Concentration (ppm)
			Latitude/Longitude		
WH01@6	3/27/2024	6	40.323631	-104.485132	0.0
FLR01@4	3/27/2024	4	40.323628	-104.485157	0.0
WH01-N@4	3/27/2024	4	40.323647	-104.485139	0.0
WH01-E@4	3/27/2024	4	40.323616	-104.485130	0.0
WH01-S@4	3/27/2024	4	40.323634	-104.485107	0.0
WH01@6.5	2/6/2025	6.5	40.323631	-104.485132	0.0
BKG01@4'	3/11/2025	4	40.323690	-104.485782	NM
BKG01@6'	3/11/2025	6	40.323690	-104.485782	NM
BKG02@4'	3/11/2025	4	40.323576	-104.484235	NM
BKG02@6'	3/11/2025	6	40.323576	-104.484235	NM
BKG03@4'	3/11/2025	4	40.323096	-104.484616	NM
BKG03@6'	3/11/2025	6	40.323096	-104.484616	NM

1. Global Positioning System (GPS) data is provided in decimal degrees using North American Datum (NAD) 83 UTMZone 13 North.

2. Volatile organic compound (VOC) concentrations are measured in the field using a photoionization detector (PID).

ppm - Parts per million

NM - Not Measured

ft-bgs - feet below ground surface

TABLE 2
SUMMARY OF VOLATILE ORGANIC SOIL CHEMISTRY DATA
NOBLE 100322
WOLFE USX CC07-25 WELLHEAD, WELD COUNTY, COLORADO
REM # 33031

Sample ID	Sample Date	Depth (ft-bgs)	Benzene (mg/kg)	Toluene (mg/kg)	Ethyl-Benzene (mg/kg)	Xylenes (mg/kg)	1,2,4-Trimethyl-Benzene (mg/kg)	1,3,5-Trimethyl-Benzene (mg/kg)	Naphthalene (mg/kg)	TPH (mg/kg)	TPH GRO (mg/kg)	TPH DRO (mg/kg)	TPH ORO (mg/kg)
ECMC Table 915-1 Limits (Residential SSL)			1.2	490	5.8	58	30	27	2	500	500**		
ECMC Table 915-1 Limits (Protection of Groundwater SSL)			0.0026	0.69	0.78	9.9	0.0081	0.0087	0.0038	500	500**		
WH01@6.5	2/6/2025	6.5	<0.00200	<0.00200	<0.00200	<0.00200	<0.00200	<0.00200	<0.00343	<125.200	<0.200	<25.0	<100

1. Grey highlighted soil analytical values indicates result is less than laboratory reporting limit

2. ** Summation of GRO+DRO+ORO must be less than 500 mg/kg

TPH-GRO = Total petroleum hydrocarbons - gasoline range organics

TPH-DRO = Total petroleum hydrocarbons - diesel range organics

TPH-ORO = Total petroleum hydrocarbons - oil range organics

ft-bgs - feet below ground surface

mg/kg - milligrams per kilogram

TABLE 3
SUMMARY OF POLYCYCLIC AROMATIC HYDROCARBON SOIL CHEMISTRY DATA
NOBLE 100322
WOLFE USX CC07-25 WELLHEAD, WELD COUNTY, COLORADO
REM # 33031

Sample ID	Sample Date	Depth (ft-bgs)	Acenaphthene (mg/kg)	Anthracene (mg/kg)	Benzo (a) Anthracene (mg/kg)	Benzo (a) Pyrene (mg/kg)	Benzo (b) Fluoranthene (mg/kg)	Benzo (k) Fluoranthene (mg/kg)	Chrysene (mg/kg)	Dibenzo (a,h) Anthracene (mg/kg)	Fluoranthene (mg/kg)	Fluorene (mg/kg)	Indeno (1,2,3- cd) Pyrene (mg/kg)	Pyrene (mg/kg)	1-Methyl - Naphthalene (mg/kg)	2-Methyl- Naphthalene (mg/kg)
ECMC Table 915-1 Limits (Residential SSL)			360	1800	1.1	0.11	1.1	11	110	0.11	240	240	1.1	180	18	24
ECMC Table 915-1 Limits (Protection of Groundwater SSL)			0.55	5.8	0.011	0.24	0.3	2.9	9	0.096	8.9	0.54	0.98	1.3	0.006	0.019
WH01@6.5	2/6/2025	6.5	<0.00343	<0.00343	<0.00343	<0.00343	<0.00343	<0.00343	<0.00343	<0.00343	<0.00343	<0.00343	<0.00343	<0.00343	<0.00343	<0.00343

1. Grey highlighted soil analytical values indicates result is less than laboratory reporting limit

ft-bgs - feet below ground surface

mg/kg - milligrams per kilogram

TABLE 4
SUMMARY OF SOIL SUITABILITY FOR RECLAMATION
NOBLE 100322
WOLFE USX CC07-25 WELLHEAD, WELD COUNTY, COLORADO
REM # 33031

Sample ID	Sample Date	Depth (ft)	pH (Standard Units)	EC (mmhos/cm)	SAR (Standard Units)	Boron (mg/L)
ECMC Table 915-1 Soil Suitability Limits			6 - 8.3	<4	<6	2
WH01@6.5	2/6/2025	6.5	8.41	0.346	1.66	0.248
BKG01@4'	3/11/2025	4	8.02	2.07	2.18	0.103
BKG01@6'	3/11/2025	6	8.51	1.11	4.43	0.102
BKG02@4'	3/11/2025	4	7.98	2.56	3.7	0.286
BKG02@6'	3/11/2025	6	8.14	2.43	4.15	0.254
BKG03@4'	3/11/2025	4	7.96	3.95	3.94	0.288
BKG03@6'	3/11/2025	6	8.99	0.801	7.65	<0.100
Maximum Background Concentration			8.99	3.95	7.65	0.288

1. **Bold** faced values exceed the ECMC Table 915-1 limit(s), but are within background concentrations.
2. **Bold** faced values exceed the ECMC Table 915-1 limit(s) and native background concentrations.
3. Brown highlighted soil analytical values indicate a regulatory exceedance.

AP = Analysis pending

NA = Not analyzed

TABLE 5
SUMMARY OF METALS IN SOIL CHEMISTRY DATA
NOBLE 100322
WOLFE USX CC07-25 WELLHEAD, WELD COUNTY, COLORADO
REM # 33031

Sample ID	Sample Date	Depth (ft-bgs)	Arsenic (mg/kg)	Barium (mg/kg)	Cadmium (mg/kg)	Chromium (VI) (mg/kg)	Copper (mg/kg)	Lead (mg/kg)	Nickel (mg/kg)	Selenium (mg/kg)	Silver (mg/kg)	Zinc (mg/kg)
ECMC Table 915-1 Limits (Residential SSL)			0.68	15000	71	0.3	3100	400	1500	390	390	23000
ECMC Table 915-1 Limits (Protection of Groundwater SSL)			0.29	82	0.38	0.00067	46	14	26	0.26	0.8	370
WH01@6.5	2/6/2025	6.5	3.09	83.7	<0.0961	<0.317*	<9.61	4.13	4.62	<0.250	<0.0961	<35.5
BKG01@4'	3/11/2025	4	1.48	34.3	<0.0894	<0.322 *	<8.94	3.00	3.21	<0.232	<0.0894	<33.1
BKG01@6'	3/11/2025	6	1.84	46.6	<0.0889	<0.312 *	<8.89	3.77	3.70	<0.231	<0.0889	<32.9
BKG02@4'	3/11/2025	4	1.60	62.4	<0.0867	<0.309 *	<8.67	4.49	5.07	<0.226	<0.0867	<32.1
BKG02@6'	3/11/2025	6	0.929	97.8	0.153	<0.294 *	<9.18	4.30	4.52	<0.239	<0.0918	<34.0
BKG03@4'	3/11/2025	4	2.08	74.3	0.0990	<0.216 *	<8.46	5.76	5.94	<0.220	<0.0846	<31.3
BKG03@6'	3/11/2025	6	1.66	40.7	<0.0967	<0.421 *	<9.67	2.59	2.58	<0.251	<0.0967	<35.8
1.25x Maximum Background Concentration			2.60	122.3	0.1913	NA	NA	7.20	7.43	NA	NA	NA

1. **Bold** faced values exceed the ECMC Table 915-1 limit(s)
2. Red & blue highlighted soil analytical values indicate an exceedance of the referenced soil screening level (SSL)
3. Grey highlighted soil analytical values indicates result is less than laboratory reporting limit

* Indicates laboratory minimum detection limit in excess of SSL

ft-bgs - feet below ground surface

mg/kg - milligrams per kilogram

**ATTACHMENT A
PHOTOGRAPHIC LOG**

Wolfe USX CC07-25 Wellhead Photographic Log



Wolfe USX CC07-25 Wellhead Photographic Log



Wolfe USX CC07-25 Wellhead Photographic Log

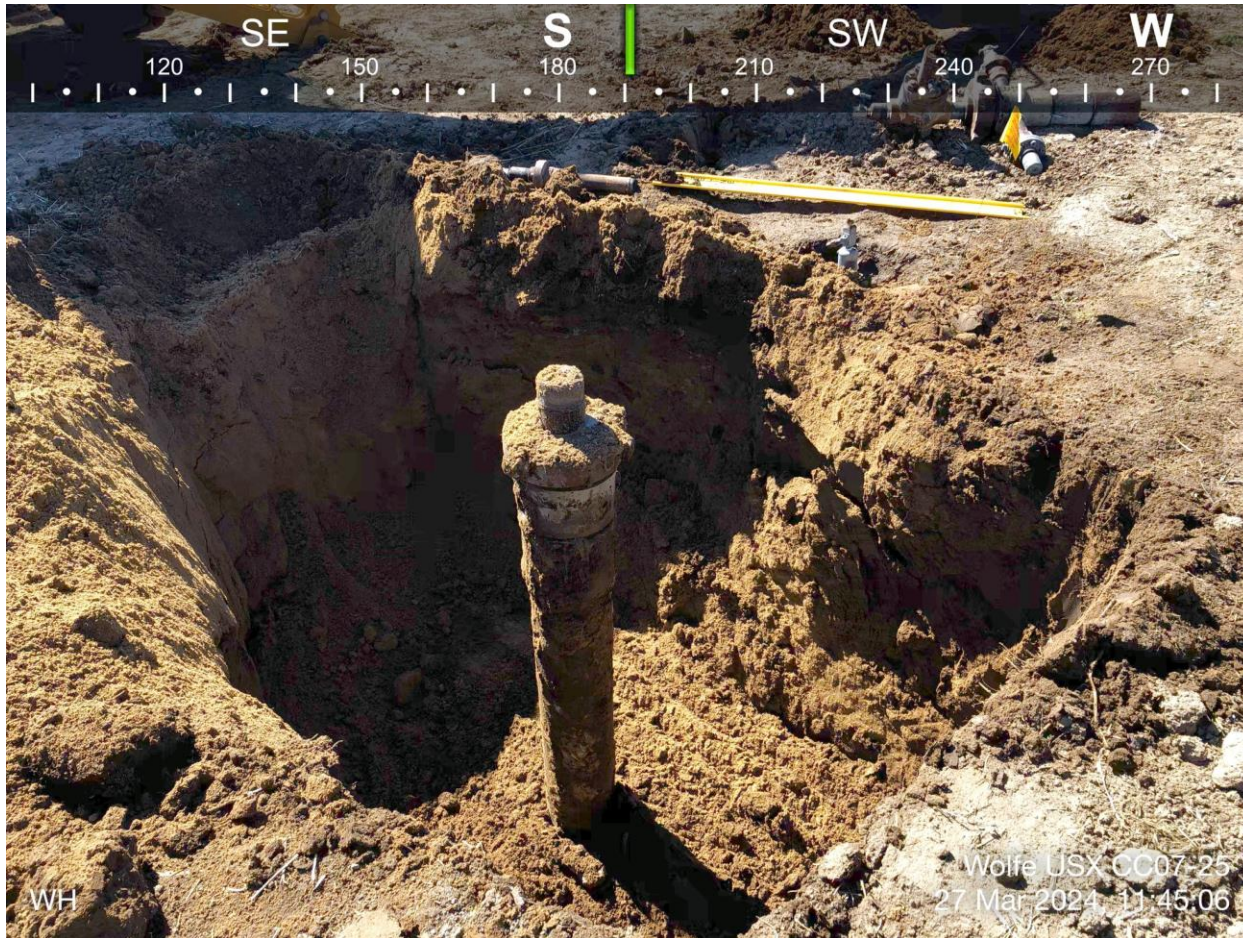




Photo Log

WOLFE USX CC07-25

March 11, 2025

Initial BKG01 Photo



BKG01 Closure Photo



Initial BKG02 Photo



BKG02 Closure Photo



Initial BKG03 Photo



BKG03 Closure Photo



**ATTACHMENT B
FACILITY CLOSURE CHECKLISTS**

Wellhead Closure Checklist

COGCC Rule 911.a.(4) Environmental Site Closure Assessment Field Form

Additional attachments (optional):		Pit Closure		Tank Battery Closure		Flowline Closure		Partially Buried Vault Closure	
Site Name & COGCC Facility Number: Wolfe USX CC07-25, 287010		Date: 3/27/2024 and 2/6/2025						Remediation Project #: 33031	
Associated Wells: NA		Age of Site: 3/5/2007 - spud date						Number of Photos Attached: 3	
Location: (GPS coordinates of wellhead or southeastern most wellhead for multiple) 40.323635 / -104.485123							Estimated Facility Size (acres): ~0.01		
General Condition of Site: (General observations regarding housekeeping, corrosion, waste management, etc.) Overall good.									
USCS Soil Type: SM				Estimated Depth to Groundwater: Unknown/Not Encountered					
Hydrocarbon Impacted Soils / Spills: (Note estimated size and if impact appears to be surficial or extends to an unknown depth) None observed.									
Salt Crusted Soils or Impacted Vegetation: (Note estimated size and if impact appears to be surficial or extends to an unknown depth) None observed.									
Wellhead(s)									
Well API	05-123-27357								
Age	3/5/2007 - spud date								
Condition of surface around wellhead	Good								
PID Readings	0.0 ppm								
Condition of subsurface	Good								
PID Readings	0.0 ppm								
Sample taken? Location/Sample ID#	WH01@6.5								
Photo Number(s)	1-3								
Other observations regarding wellheads:									
Summary									
Was impacted soil identified? <input checked="" type="checkbox"/> No Yes - less than 10 cubic yards Yes - more than 10 cubic yards									
Total number of samples field screened: 5				Total number of samples collected: 5					
Highest PID Reading: 0.0 ppm				Total number of samples submitted to lab for analysis: 1					
If more than 10 cubic yards of impacted soil were observed: NA									
Vertical extent:				Estimated spill volume:					
Lateral extent:				Volume of soil removed:					
Is additional investigation required?									
Was groundwater encountered during the investigation? <input checked="" type="checkbox"/> No Yes - not impacted or in contact with impacted soils Yes - groundwater impacted and/or in contact with impacted soils									
Measured depth to groundwater:				Was remedial groundwater removal conducted? Yes No					
Date Groundwater was encountered:				Commencement date of removal:					
Sheen on groundwater? Yes No				Volume of groundwater removed prior to sampling:					
Free product observed? Yes No				Volume of groundwater removed post sampling:					
Total number of samples collected:				Total Volume of groundwater removed:					
Total number of samples submitted to lab for analysis:									

