



## FLOWLINE ABANDONMENT FORM

<b>CLIENT:</b> Noble		<b>SITE NAME:</b> Wolfe UCX CC7-25					<b>DATE:</b> 1/30/2025	<b>REM. PROJECT #:</b> 33031	<b>WEATHER:</b>	
<b>SITE DIRECTIONS:</b> CR61 & CR46, 0.3N, 0.3 E							<b>JOB#:</b>			
<b>LEGALS AND LAT/LONG:</b> 40.326745, -104.482563							<b>TASMAN PERSONNEL:</b> W.W E.C			
<b>SOIL TYPES:</b> Well Graded Sand - SW							<b>SURFACE GRADIENT:</b> West			
<b>SOIL SAMPLING</b>							<b>FACILITY INFRASTRUCTURE</b>			
Date/Time	Soil Sample ID	PID (ppm)	Visual	Olfactory	Photo?	Grab or Lab Sample?	EQUIPMENT	Quantity		
							<b>Above Ground Storage Tank (AST)</b>			
01-30-2025 13:50	FL01-01@4'	0.1	No Staining	No Odor	Yes	Grab	<b>Buried or Partially Buried Vessel</b>			
01-30-2025 13:56	FL01-02@4'	0.2	No Staining	No Odor	Yes	Grab	<b>Separator</b>			
01-30-2025 14:11	FL01-03@4'	0.0	No Staining	No Odor	Yes	Grab	<b>Emission Control Device (ECD)</b>			
01-30-2025 14:20	FL01-04@4'	0.1	No Staining	No Odor	Yes	Lab	<b>Dump Line</b>			
01-30-2025 14:25	FL01-05@4'	0.0	No Staining	No Odor	Yes	Grab	<b>Wellhead</b>			
01-30-2025 14:31	FL01-06@4'	0.0	No Staining	No Odor	Yes	Grab	<b>Flowline</b>	1	✓	
01-30-2025 14:42	FL01-07@4'	0.0	No Staining	No Odor	Yes	Grab	<b>Other:</b>			
01-30-2025 14:46	FL01-08@4'	0.3	No Staining	No Odor	No	Lab	<b>Soil Loads Removed</b>			
							<b>IMPACTED SOIL IDENTIFIED?</b>			
							<b>ESTIMATED VOLUME OF IMPACTS:</b>			
							<b>Date</b>	<b>Number</b>	<b>CY</b>	
							<b>Total Removed</b>	0	0	
							<b>Disposal Facility:</b>			
							<b>Groundwater Recovery</b>			
							<b>DATE GW ENCOUNTERED:</b>		<b>DEPTH:</b>	
							<b>GROUNDWATER IN CONTACT WITH IMPACTED SOIL?</b>			
							<b>LNAPL OR SHEEN OBSERVED ON GW?</b>			
<b>GROUNDWATER SAMPLING</b>							<b>Date</b>	<b>BBLS</b>		
Date/Time	Groundwater Sample ID	Depth Collected	Turbid?	Sheen?	Odor?	Photo?				
							<b>Total Removed</b>	0		
							<b>Disposal Facility:</b>			

# Chevron Rockies Business Unit

## Field Qualitative Criteria for ECMC Reporting Associated with the Discovery of Potentially Impacted Material

If answered **Yes** to any of the questions listed below, this may suggest the presence of potentially impacted materials as outlined in ECMC Rule 912. Out of an abundance of caution, a “Yes” response will be reported to the ECMC within 24 hours after discovery, regardless of laboratory results. **Immediately notify the RBU Remediation Team.** Include a copy of this Field Qualitative Spill Criteria Checklist in the field Report.

Please answer the following questions when on-site:

1. Is there visible petroleum hydrocarbon staining in the soil? No\_\_\_\_\_
2. Does the soil sample from the stained area have a petroleum odor? No\_\_\_\_\_
3. Is there a petroleum hydrocarbon sheen on the nearby surface water? No\_\_\_\_\_
4. Does there appear to be a sheen of the surface of accumulated groundwater or seeps within the excavation indicative of petroleum? No\_\_\_\_\_
5. Is stained soil in contact with groundwater? No\_\_\_\_\_

Please Include relevant photos of the site conditions for items 1-5.

Location name: Wolfe UCX CC7-25

Please Circle Facility Type: Flowline





<b>Equipment ID:</b> FL01-01@4'		<b>Equipment Type:</b> Flowline		<b>Equipment ID:</b> FL01-02@4'		<b>Equipment Type:</b> Flowline	
<b>Material:</b> Steel	<b>Volume:</b>	<b>Contents:</b> Oil/Gas/Water		<b>Material:</b> Steel	<b>Volume:</b>	<b>Contents:</b> Oil/Gas/Water	
<b>Notes/Conditions:</b>				<b>Notes/Conditions:</b>			


**Equipment ID:** FL01-03@4'

**Equipment Type:** Flowline

**Material:** Steel

**Volume:**
**Contents:**
**Notes/Conditions:**
**Equipment ID:** FL01-04@4'

**Equipment Type:** Flowline

**Material:**
**Volume:**
**Contents:**
**Notes/Conditions:** Directional change sample, Soil Sample pile is behind bucket and circled



<b>Equipment ID:</b> FL01-05 @ 4'		<b>Equipment Type:</b> Flowline	
<b>Material:</b>	<b>Volume:</b>	<b>Contents:</b>	
<b>Notes/Conditions:</b>			

<b>Equipment ID:</b> FL01-06 @ 4'		<b>Equipment Type:</b> Flowline	
<b>Material:</b>	<b>Volume:</b>	<b>Contents:</b>	
<b>Notes/Conditions:</b>			



<b>Equipment ID:</b> FL01-07@4'		<b>Equipment Type:</b> Flowline	
<b>Material:</b>	<b>Volume:</b>	<b>Contents:</b>	
<b>Notes/Conditions:</b>			

<b>Equipment ID:</b>		<b>Equipment Type:</b>	
<b>Material:</b>	<b>Volume:</b>	<b>Contents:</b>	
<b>Notes/Conditions:</b>			

**TABLE 1**  
**FIELD DATA SUMMARY TABLE**  
**NOBLE ENERGY, INC. (100322)**  
**FORMER WOLFE USX CC07-25 FLOWLINE, WELD COUNTY, COLORADO**  
**REM # 33031**

Sample ID	Sample Date	Depth (ft. bgs)	GPS Data Latitude/Longitude		PDOP Value	VOC Concentration (ppm)
FL01-01@4'	1/30/2025	4	40.326500	-104.482971	0.9	0.1
FL01-02@4'	1/30/2025	4	40.326079	-104.483453	0.8	0.2
FL01-03@4'	1/30/2025	4	40.325361	-104.484238	0.8	0.0
FL01-04@4'	1/30/2025	4	40.324707	-104.484924	0.8	0.1
FL01-05@4'	1/30/2025	4	40.325735	-104.483833	0.9	0.0
FL01-06@4'	1/30/2025	4	40.324390	-104.485271	0.7	0.0
FL01-07@4'	1/30/2025	4	40.324998	-104.484623	0.8	0.0
FL01-08@4'	1/30/2025	4	40.324084	-104.485614	0.9	0.3
BKG01@0-6" <sup>[A]</sup>	1/31/2025	0-0.5	40.325815	-104.482950	1.1	0.1
BKG01@1" <sup>[A]</sup>	1/31/2025	1	40.325815	-104.482950	1.1	0.2
BKG01@2" <sup>[A]</sup>	1/31/2025	2	40.325815	-104.482950	1.1	0.0
BKG01@2.5" <sup>[A]</sup>	1/31/2025	2.5	40.325815	-104.482950	1.1	0.0
BKG01@3" <sup>[A]</sup>	1/31/2025	3	40.325815	-104.482950	1.1	0.0
BKG01@4" <sup>[A]</sup>	1/31/2025	4	40.325815	-104.482950	1.1	0.0
BKG02@0-6" <sup>[A]</sup>	1/31/2025	0-0.5	40.325993	-104.483831	0.9	0.0
BKG02@1" <sup>[A]</sup>	1/31/2025	1	40.325993	-104.483831	0.9	0.0
BKG02@2" <sup>[A]</sup>	1/31/2025	2	40.325993	-104.483831	0.9	0.0
BKG02@2.5" <sup>[A]</sup>	1/31/2025	2.5	40.325993	-104.483831	0.9	0.0
BKG02@3" <sup>[A]</sup>	1/31/2025	3	40.325993	-104.483831	0.9	0.0
BKG02@4" <sup>[A]</sup>	1/31/2025	4	40.325993	-104.483831	0.9	0.0
BKG03@0-6" <sup>[A]</sup>	1/31/2025	0-0.5	40.326164	-104.484558	1.1	0.1
BKG03@1" <sup>[A]</sup>	1/31/2025	1	40.326164	-104.484558	1.1	0.2
BKG03@2" <sup>[A]</sup>	1/31/2025	2	40.326164	-104.484558	1.1	0.0

Sample ID	Sample Date	Depth (ft. bgs)	GPS Data Latitude/Longitude		PDOP Value	VOC Concentration (ppm)
BKG03@2.5' <sup>[A]</sup>	1/31/2025	2.5	40.326164	-104.484558	1.1	0.0
BKG03@3' <sup>[A]</sup>	1/31/2025	3	40.326164	-104.484558	1.1	0.0
BKG03@4' <sup>[A]</sup>	1/31/2025	4	40.326164	-104.484558	1.1	0.0
BKG04@0-6" <sup>[A]</sup>	1/31/2025	0-0.5	40.325305	-104.477916	0.8	0.1
BKG04@1' <sup>[A]</sup>	1/31/2025	1	40.325305	-104.477916	0.8	0.0
BKG04@2' <sup>[A]</sup>	1/31/2025	2	40.325305	-104.477916	0.8	0.0
BKG04@2.5' <sup>[A]</sup>	1/31/2025	2.5	40.325305	-104.477916	0.8	0.0
BKG04@3' <sup>[A]</sup>	1/31/2025	3	40.325305	-104.477916	0.8	0.0
BKG04@4' <sup>[A]</sup>	1/31/2025	4	40.325305	-104.477916	0.8	0.0
BKG05@0-6" <sup>[A]</sup>	1/31/2025	0-0.5	40.324770	-104.474511	0.8	0.0
BKG05@1' <sup>[A]</sup>	1/31/2025	1	40.324770	-104.474511	0.8	0.0
BKG05@2' <sup>[A]</sup>	1/31/2025	2	40.324770	-104.474511	0.8	0.0
BKG05@2.5' <sup>[A]</sup>	1/31/2025	2.5	40.324770	-104.474511	0.8	0.1
BKG05@3' <sup>[A]</sup>	1/31/2025	3	40.324770	-104.474511	0.8	0.0
BKG05@4' <sup>[A]</sup>	1/31/2025	4	40.324770	-104.474511	0.8	0.2
BKG06@0-6" <sup>[A]</sup>	1/31/2025	0-0.5	40.324642	-104.473556	0.8	0.0
BKG06@1' <sup>[A]</sup>	1/31/2025	1	40.324642	-104.473556	0.8	0.0
BKG06@2' <sup>[A]</sup>	1/31/2025	2	40.324642	-104.473556	0.8	0.0
BKG06@2.5' <sup>[A]</sup>	1/31/2025	2.5	40.324642	-104.473556	0.8	0.0
BKG06@3' <sup>[A]</sup>	1/31/2025	3	40.324642	-104.473556	0.8	0.0
BKG06@4' <sup>[A]</sup>	1/31/2025	4	40.324642	-104.473556	0.8	0.0

1. Global Positioning System (GPS) data is provided in decimal degrees using North American Datum (NAD) 83 UTMZone 13 North.

2. Volatile organic compound (VOC) concentrations are measured in the field using a photoionization detector (PID).

[A] Background samples collected during decommissioning of nearby Wolfe USX CC 7-10 (REM#32569)

PDOP = Position Dilution of Precision

ppm = Parts per million

ft. = Feet

bgs = Below ground surface

TABLE 2  
SUMMARY OF VOLATILE ORGANIC SOIL CHEMISTRY DATA  
NOBLE ENERGY, INC. (100322)  
FORMER WOLFE USX CC07-25 FLOWLINE, WELD COUNTY, COLORADO  
REM # 33031

Sample ID	Sample Date	Depth (ft. bgs)	Benzene (mg/kg)	Toluene (mg/kg)	Ethyl-Benzene (mg/kg)	Xylenes (mg/kg)	1,2,4-Trimethyl-Benzene (mg/kg)	1,3,5-Trimethyl-Benzene (mg/kg)	Naphthalene (mg/kg)	TPH (mg/kg)	TPH GRO (mg/kg)	TPH DRO (mg/kg)	TPH ORO (mg/kg)
ECMC Table 915-1 Limits (Residential SSL)			1.2	490	5.8	58	30	27	2	500	500**		
ECMC Table 915-1 Limits (Protection of Groundwater SSL)			0.0026	0.69	0.78	9.9	0.0081	0.0087	0.0038	500	500**		
FL01-04@4'	1/30/2025	4	<0.0020	<0.0050	<0.0050	<0.010	<0.0050	<0.0050	<0.0038	<50	<0.50	<50	<50
FL01-08@4'	1/30/2025	4	<0.0020	<0.0050	<0.0050	<0.010	<0.0050	<0.0050	<0.0038	<50	<0.50	<50	<50

1. **Bold** values exceed the ECMC Table 915-1 limit(s).
  2. Red & blue highlighted soil analytical values indicate an exceedance of the referenced soil screening level (SSL).
  3. \*\* Summation of GRO+DRO+ORO must be less than 500 mg/kg.
- ECMC = Energy & Carbon Management Commission  
(<) = Analytical result is less than the indicated laboratory reporting limit.  
TPH-GRO = Total petroleum hydrocarbons - gasoline range organics  
TPH-DRO = Total petroleum hydrocarbons - diesel range organics  
TPH-ORO = Total petroleum hydrocarbons - oil range organics  
mg/kg = Milligrams per kilogram  
ft. = Feet  
bgs = Below ground surface

TABLE 3  
SUMMARY OF POLYCYCLIC AROMATIC HYDROCARBON SOIL CHEMISTRY DATA  
NOBLE ENERGY, INC. (100322)  
FORMER WOLFE USX CC07-25 FLOWLINE, WELD COUNTY, COLORADO  
REM # 33031

Sample ID	Sample Date	Depth (ft. bgs)	Acenaphthene (mg/kg)	Anthracene (mg/kg)	Benzo (a) Anthracene (mg/kg)	Benzo (a) Pyrene (mg/kg)	Benzo (b) Fluoranthene (mg/kg)	Benzo (k) Fluoranthene (mg/kg)	Chrysene (mg/kg)	Dibenzo (a,h) Anthracene (mg/kg)	Fluoranthene (mg/kg)	Fluorene (mg/kg)	Indeno (1,2,3-cd) Pyrene (mg/kg)	Pyrene (mg/kg)	1-Methyl - Naphthalene (mg/kg)	2-Methyl - Naphthalene (mg/kg)
ECMC Table 915-1 Limits (Residential SSL)			360	1,800	1.1	0.11	1.1	11	110	0.11	240	240	1.1	180	18	24
ECMC Table 915-1 Limits (Protection of Groundwater SSL)			0.55	5.8	0.011	0.24	0.3	2.9	9	0.096	8.9	0.54	0.98	1.3	0.006	0.019
FLO1-04@4'	1/30/2025	4	<0.00500	<0.00500	<0.00500	<0.00500	<0.00500	<0.00500	<0.00500	<0.00500	0.0107	<0.00500	<0.00500	0.00742	<0.00500	<0.00500
FLO1-08@4'	1/30/2025	4	<0.00500	<0.00500	<0.00500	<0.00500	<0.00500	<0.00500	<0.00500	<0.00500	<0.00500	<0.00500	<0.00500	<0.00500	<0.00500	<0.00500

1. Bold values exceed the ECMC Table 915-1 limit(s)

2. Red & blue highlighted soil analytical values indicate an exceedance of the referenced soil screening level (SSL)

(<) = Analytical result is less than the indicated laboratory reporting limit.

mg/kg = Milligrams per kilogram

ft. = Feet

bgs = Below ground surface

**TABLE 4**  
**SUMMARY OF SOIL SUITABILITY FOR RECLAMATION**  
**NOBLE ENERGY, INC. (100322)**  
**FORMER WOLFE USX CC07-25 FLOWLINE, WELD COUNTY, COLORADO**  
**REM # 33031**

Sample ID	Sample Date	Depth (ft. bgs)	pH (Standard Units)	EC (mmhos/cm)	SAR (Standard Units)	Boron (mg/L)
ECMC Table 915-1 Soil Suitability Limits			6 - 8.3	<4	<6	2
FL01-04@4'	1/30/2025	4	8.53	0.774	3.21	<2.00
FL01-08@4'	1/30/2025	4	7.88	3.10	0.601	<2.00
BKG01@0-6" <sup>[A]</sup>	1/31/2025	0-0.5	7.63	0.567	0.815	<2.00
BKG01@2" <sup>[A]</sup>	1/31/2025	2	8.08	1.29	1.74	<2.00
BKG01@2.5" <sup>[A]</sup>	1/31/2025	2.5	7.68	1.45	1.85	<2.00
BKG01@3" <sup>[A]</sup>	1/31/2025	3	7.73	1.29	2.32	<2.00
BKG01@4" <sup>[A]</sup>	1/31/2025	4	8.05	1.06	2.74	<2.00
BKG02@0-6" <sup>[A]</sup>	1/31/2025	0-0.5	7.23	1.70	3.31	<2.00
BKG02@2" <sup>[A]</sup>	1/31/2025	2	7.86	2.50	3.79	<2.00
BKG02@2.5" <sup>[A]</sup>	1/31/2025	2.5	7.65	2.17	3.64	<2.00
BKG02@3" <sup>[A]</sup>	1/31/2025	3	7.64	2.33	3.22	<2.00
BKG02@4" <sup>[A]</sup>	1/31/2025	4	8.21	1.46	2.21	<2.00
BKG03@0-6" <sup>[A]</sup>	1/31/2025	0-0.5	7.68	1.54	3.47	<2.00
BKG03@2" <sup>[A]</sup>	1/31/2025	2	7.75	3.46	4.09	<2.00
BKG03@2.5" <sup>[A]</sup>	1/31/2025	2.5	7.82	3.56	3.80	<2.00
BKG03@3" <sup>[A]</sup>	1/31/2025	3	7.93	2.83	4.19	<2.00
BKG03@4" <sup>[A]</sup>	1/31/2025	4	7.79	2.50	6.04	<2.00
BKG04@0-6" <sup>[A]</sup>	1/31/2025	0-0.5	7.98	1.66	3.17	<2.00
BKG04@2" <sup>[A]</sup>	1/31/2025	2	7.86	1.28	1.98	<2.00
BKG04@2.5" <sup>[A]</sup>	1/31/2025	2.5	7.64	0.898	1.99	<2.00
BKG04@3" <sup>[A]</sup>	1/31/2025	3	7.83	1.65	2.06	<2.00
BKG04@4" <sup>[A]</sup>	1/31/2025	4	8.31	1.39	2.10	<2.00
BKG05@0-6" <sup>[A]</sup>	1/31/2025	0-0.5	7.86	0.592	1.93	<2.00

Sample ID	Sample Date	Depth (ft. bgs)	pH (Standard Units)	EC (mmhos/cm)	SAR (Standard Units)	Boron (mg/L)
ECMC Table 915-1 Soil Suitability Limits			6 - 8.3	<4	<6	2
BKG05@2' <sup>[A]</sup>	1/31/2025	2	7.90	1.48	1.75	<2.00
BKG05@2.5' <sup>[A]</sup>	1/31/2025	2.5	8.04	1.49	1.71	<2.00
BKG05@3' <sup>[A]</sup>	1/31/2025	3	7.93	1.25	1.88	<2.00
BKG05@4' <sup>[A]</sup>	1/31/2025	4	8.01	1.20	1.88	<2.00
BKG06@0-6" <sup>[A]</sup>	1/31/2025	0-0.5	7.64	1.08	2.40	<2.00
BKG06@2' <sup>[A]</sup>	1/31/2025	2	7.28	2.78	3.07	<2.00
BKG06@2.5' <sup>[A]</sup>	1/31/2025	2.5	7.87	2.47	2.84	<2.00
BKG06@3' <sup>[A]</sup>	1/31/2025	3	7.79	1.89	1.83	<2.00
BKG06@4' <sup>[A]</sup>	1/31/2025	4	7.48	1.50	1.98	<2.00
Maximum Background Concentration			8.31	-	-	-

1. **Bold** faced values exceed the ECMC Table 915-1 limit(s), but are within background concentrations.

2. **Bold** faced values exceed the ECMC Table 915-1 limit(s) and native background concentrations.

3. **Brown** highlighted soil analytical values indicate a regulatory exceedance.

[A] Background samples collected during decommissioning of nearby Wolfe USX CC 7-10 (REM#32569)

ECMC = Colorado Energy & Carbon Management Commission

EC = Electrical conductivity

SAR = Sodium adsorption ratio

mmhos/cm = millimhos per centimeter

mg/L = milligram per liter

(<) = Analytical result is less than the indicated laboratory reporting limit.

ft. = Feet

bgs = Below ground surface

TABLE 5  
SUMMARY OF METALS IN SOIL CHEMISTRY DATA  
NOBLE ENERGY, INC. (100322)  
FORMER WOLFE USX CC07-25 FLOWLINE, WELD COUNTY, COLORADO  
REM # 33031

Sample ID	Sample Date	Depth (ft. bgs)	Arsenic (mg/kg)	Barium (mg/kg)	Cadmium (mg/kg)	Chromium (VI) <sup>[A]</sup> (mg/kg)	Copper (mg/kg)	Lead (mg/kg)	Nickel (mg/kg)	Selenium (mg/kg)	Silver (mg/kg)	Zinc (mg/kg)
ECMC Table 915-1 Limits (Residential SSL)			0.68	15,000	71	0.3	3,100	400	1,500	390	390	23,000
ECMC Table 915-1 Limits (Protection of Groundwater SSL)			0.29	82	0.38	0.00067	46	14	26	0.26	0.8	370
FL01-04@4'	1/30/2025	4	0.603	83.8	<0.200	<0.30	1.90	5.92	1.80	<0.260	0.0328	7.25
FL01-08@4'	1/30/2025	4	0.682	104	0.221	<0.30	2.75	10.6	2.20	<0.260	0.0472	9.22
BKG01@0-6" <sup>[A]</sup>	1/31/2025	0-0.5	0.625	80.9	<0.200	<0.30	2.76	7.61	1.59	0.299	0.0396	11.4
BKG01@2" <sup>[A]</sup>	1/31/2025	2	0.448	44.5	<0.200	<0.30	1.04	3.35	1.01	<0.260	<0.0200	3.99
BKG01@2.5" <sup>[A]</sup>	1/31/2025	2.5	0.439	50.5	<0.200	<0.30	1.13	3.87	1.03	<0.260	<0.0200	4.27
BKG01@3" <sup>[A]</sup>	1/31/2025	3	0.522	58.2	<0.200	<0.30	1.85	5.00	1.29	<0.260	0.0250	7.43
BKG01@4" <sup>[A]</sup>	1/31/2025	4	0.522	65.0	<0.200	<0.30	1.27	4.31	1.21	<0.260	0.0250	4.74
BKG02@0-6" <sup>[A]</sup>	1/31/2025	0-0.5	0.644	119	0.263	<0.30	3.38	10.4	1.83	0.383	0.0482	12.6
BKG02@2" <sup>[A]</sup>	1/31/2025	2	0.854	175	0.253	<0.30	2.52	12.2	2.24	<0.260	0.0920	8.91
BKG02@2.5" <sup>[A]</sup>	1/31/2025	2.5	0.863	177	0.246	<0.30	2.50	11.9	2.21	<0.260	0.0836	8.83
BKG02@3" <sup>[A]</sup>	1/31/2025	3	0.855	167	0.205	<0.30	2.40	10.7	2.12	<0.260	0.0796	8.57
BKG02@4" <sup>[A]</sup>	1/31/2025	4	0.467	61.3	<0.200	<0.30	1.21	3.70	1.06	<0.260	<0.0200	4.82
BKG03@0-6" <sup>[A]</sup>	1/31/2025	0-0.5	0.671	146	0.321	<0.30	3.36	12.6	1.98	0.395	0.0621	12.8
BKG03@2" <sup>[A]</sup>	1/31/2025	2	0.738	160	0.274	<0.30	2.57	11.5	2.11	<0.260	0.0695	8.80
BKG03@2.5" <sup>[A]</sup>	1/31/2025	2.5	0.755	140	0.242	<0.30	2.55	9.96	2.08	<0.260	0.0576	9.16
BKG03@3" <sup>[A]</sup>	1/31/2025	3	0.716	123	0.236	<0.30	2.78	11.0	2.27	<0.260	0.0587	9.41
BKG03@4" <sup>[A]</sup>	1/31/2025	4	0.706	89.8	0.276	<0.30	2.80	11.4	2.20	<0.260	0.0843	9.69
BKG04@0-6" <sup>[A]</sup>	1/31/2025	0-0.5	0.620	70.0	<0.200	<0.30	1.64	5.43	1.66	<0.260	0.0324	7.02
BKG04@2" <sup>[A]</sup>	1/31/2025	2	0.632	71.3	<0.200	<0.30	2.61	6.31	1.68	<0.260	0.031	10.6
BKG04@2.5" <sup>[A]</sup>	1/31/2025	2.5	0.613	72.8	<0.200	<0.30	1.95	6.04	1.54	<0.260	0.0311	7.91
BKG04@3" <sup>[A]</sup>	1/31/2025	3	0.531	58.9	<0.200	<0.30	1.40	4.63	1.51	<0.260	0.0248	6.06
BKG04@4" <sup>[A]</sup>	1/31/2025	4	0.709	201	0.204	<0.30	1.54	7.25	2.14	<0.260	0.0352	7.87
BKG05@0-6" <sup>[A]</sup>	1/31/2025	0-0.5	0.553	62.3	<0.200	<0.30	3.69	6.05	1.45	0.327	0.0235	13.4
BKG05@2" <sup>[A]</sup>	1/31/2025	2	0.523	60.4	<0.200	<0.30	1.52	4.39	1.35	<0.260	<0.0200	6.12
BKG05@2.5" <sup>[A]</sup>	1/31/2025	2.5	0.498	57.5	<0.200	<0.30	1.68	4.69	1.37	<0.260	0.0203	6.28
BKG05@3" <sup>[A]</sup>	1/31/2025	3	0.480	52.0	<0.200	<0.30	1.35	3.95	1.25	<0.260	<0.0200	5.40
BKG05@4" <sup>[A]</sup>	1/31/2025	4	0.468	47.5	<0.200	<0.30	1.20	3.31	1.17	<0.260	<0.0200	4.92
BKG06@0-6" <sup>[A]</sup>	1/31/2025	0-0.5	0.548	76.7	<0.200	<0.30	3.46	7.09	1.50	0.298	0.0269	12.8
BKG06@2" <sup>[A]</sup>	1/31/2025	2	0.807	83.9	0.221	<0.30	2.69	7.36	1.52	<0.260	0.0294	10.1
BKG06@2.5" <sup>[A]</sup>	1/31/2025	2.5	0.591	78.4	<0.200	<0.30	1.70	7.02	1.54	<0.260	0.0233	6.53

Sample ID	Sample Date	Depth (ft. bgs)	Arsenic (mg/kg)	Barium (mg/kg)	Cadmium (mg/kg)	Chromium (VI) <sup>[A]</sup> (mg/kg)	Copper (mg/kg)	Lead (mg/kg)	Nickel (mg/kg)	Selenium (mg/kg)	Silver (mg/kg)	Zinc (mg/kg)
ECMC Table 915-1 Limits (Residential SSL)			0.68	15,000	71	0.3	3,100	400	1,500	390	390	23,000
ECMC Table 915-1 Limits (Protection of Groundwater SSL)			0.29	82	0.38	0.00067	46	14	26	0.26	0.8	370
BKG06@3 <sup>[A]</sup>	1/31/2025	3	0.439	48.3	<0.200	<0.30	1.26	3.61	1.14	<0.260	<0.0200	4.85
BKG06@4 <sup>[A]</sup>	1/31/2025	4	0.389	44.0	<0.200	<0.30	1.22	3.36	1.10	<0.260	<0.0200	4.80
1.25x Maximum Background Concentration			1.08	251	-	-	-	-	-	-	-	-

- Bold** faced values exceed the ECMC Table 915-1 limit(s), but are within 1.25x background concentrations.
- Red** faced values exceed the ECMC Table 915-1 limit(s) and native background concentrations.
- Red & blue highlighted soil analytical values indicate an exceedance of the referenced soil screening level (SSL).
- Compound falls within ECMC Table 915-1 Footnote 9.
- Non-detect background results accounted for in the highest background concentration by using the reporting limit.

[A] Background samples collected during decommissioning of nearby Wolfe USX CC 7-10 (REM#32569)

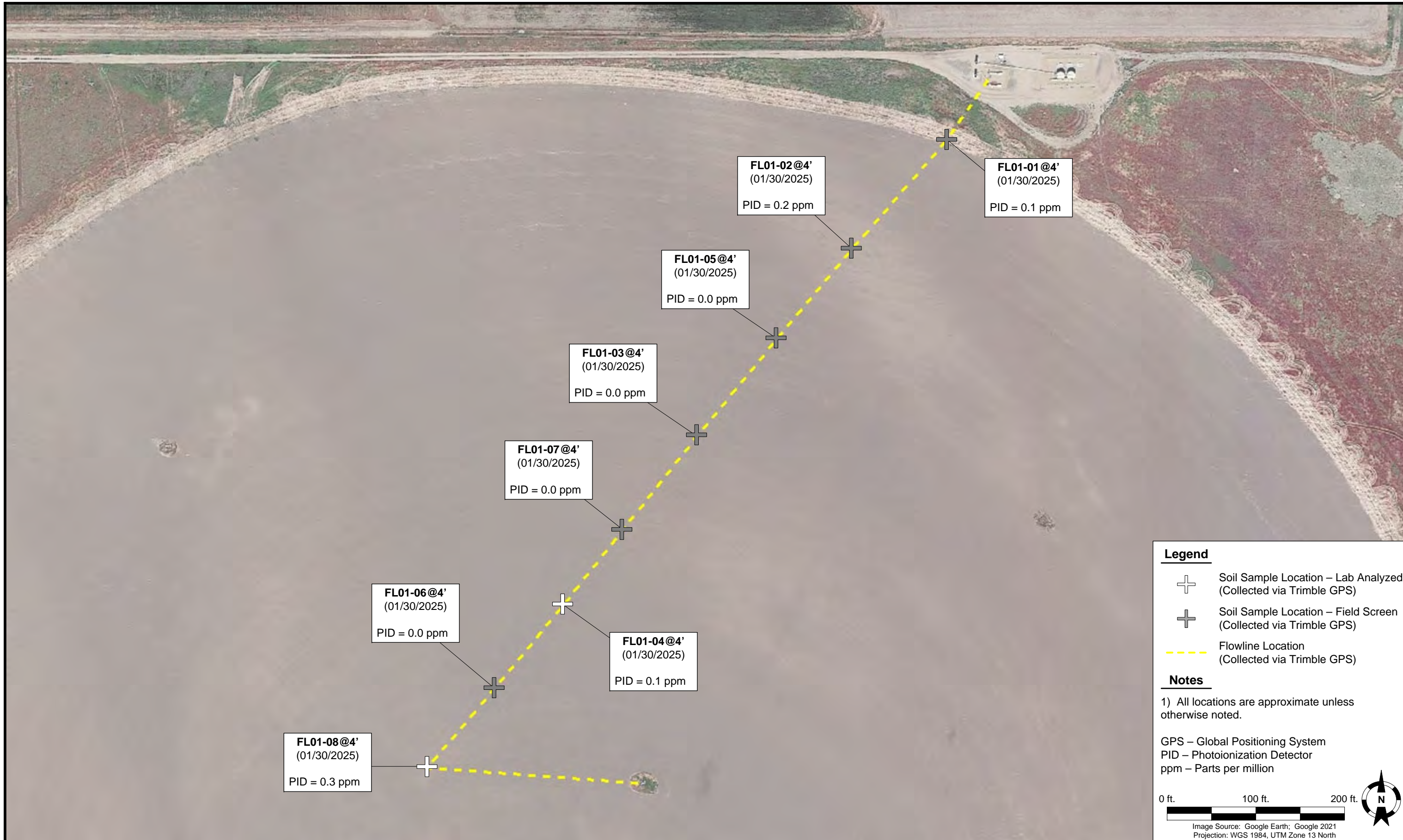
ECMC = Energy & Carbon Management Commission

(<) = Analytical result is less than the indicated laboratory reporting limit.

mg/kg = Milligrams per kilogram

ft. = Feet

bgs = Below ground surface



**Legend**

- Soil Sample Location – Lab Analyzed (Collected via Trimble GPS)
- Soil Sample Location – Field Screen (Collected via Trimble GPS)
- Flowline Location (Collected via Trimble GPS)

**Notes**

1) All locations are approximate unless otherwise noted.

GPS – Global Positioning System  
 PID – Photoionization Detector  
 ppm – Parts per million

0 ft. 100 ft. 200 ft.

Image Source: Google Earth; Google 2021  
 Projection: WGS 1984, UTM Zone 13 North

DATE: January 30, 2025

DESIGNED BY: J. Whritenour

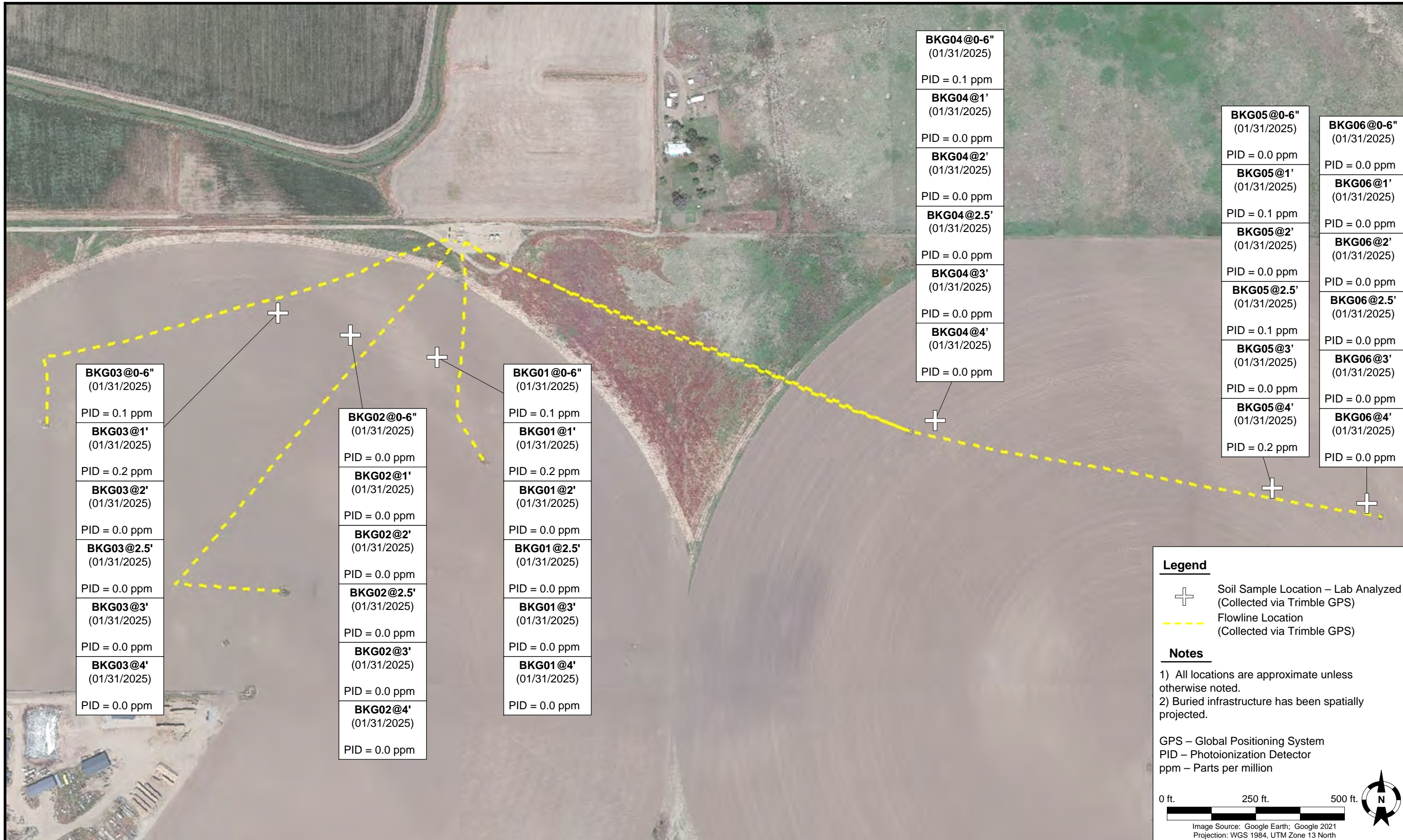
DRAWN BY: L. Reed



**Noble Energy, Inc. – 100322 – DJ Basin**  
**Wolfe USX CC7-25 Flowline**  
 NESW, Section 7, Township 4 North, Range 63 West  
 Weld County, Colorado

SOIL SAMPLE  
 LOCATION MAP  
 (FLOWLINE)

FIGURE  
 1



<b>BKG03@0-6"</b> (01/31/2025)
PID = 0.1 ppm
<b>BKG03@1'</b> (01/31/2025)
PID = 0.2 ppm
<b>BKG03@2'</b> (01/31/2025)
PID = 0.0 ppm
<b>BKG03@2.5'</b> (01/31/2025)
PID = 0.0 ppm
<b>BKG03@3'</b> (01/31/2025)
PID = 0.0 ppm
<b>BKG03@4'</b> (01/31/2025)
PID = 0.0 ppm

<b>BKG02@0-6"</b> (01/31/2025)
PID = 0.0 ppm
<b>BKG02@1'</b> (01/31/2025)
PID = 0.0 ppm
<b>BKG02@2'</b> (01/31/2025)
PID = 0.0 ppm
<b>BKG02@2.5'</b> (01/31/2025)
PID = 0.0 ppm
<b>BKG02@3'</b> (01/31/2025)
PID = 0.0 ppm
<b>BKG02@4'</b> (01/31/2025)
PID = 0.0 ppm

<b>BKG01@0-6"</b> (01/31/2025)
PID = 0.1 ppm
<b>BKG01@1'</b> (01/31/2025)
PID = 0.2 ppm
<b>BKG01@2'</b> (01/31/2025)
PID = 0.0 ppm
<b>BKG01@2.5'</b> (01/31/2025)
PID = 0.0 ppm
<b>BKG01@3'</b> (01/31/2025)
PID = 0.0 ppm
<b>BKG01@4'</b> (01/31/2025)
PID = 0.0 ppm

<b>BKG04@0-6"</b> (01/31/2025)
PID = 0.1 ppm
<b>BKG04@1'</b> (01/31/2025)
PID = 0.0 ppm
<b>BKG04@2'</b> (01/31/2025)
PID = 0.0 ppm
<b>BKG04@2.5'</b> (01/31/2025)
PID = 0.0 ppm
<b>BKG04@3'</b> (01/31/2025)
PID = 0.0 ppm
<b>BKG04@4'</b> (01/31/2025)
PID = 0.0 ppm

<b>BKG05@0-6"</b> (01/31/2025)
PID = 0.0 ppm
<b>BKG05@1'</b> (01/31/2025)
PID = 0.1 ppm
<b>BKG05@2'</b> (01/31/2025)
PID = 0.0 ppm
<b>BKG05@2.5'</b> (01/31/2025)
PID = 0.1 ppm
<b>BKG05@3'</b> (01/31/2025)
PID = 0.0 ppm
<b>BKG05@4'</b> (01/31/2025)
PID = 0.2 ppm

<b>BKG06@0-6"</b> (01/31/2025)
PID = 0.0 ppm
<b>BKG06@1'</b> (01/31/2025)
PID = 0.0 ppm
<b>BKG06@2'</b> (01/31/2025)
PID = 0.0 ppm
<b>BKG06@2.5'</b> (01/31/2025)
PID = 0.0 ppm
<b>BKG06@3'</b> (01/31/2025)
PID = 0.0 ppm
<b>BKG06@4'</b> (01/31/2025)
PID = 0.0 ppm

**Legend**

- Soil Sample Location – Lab Analyzed (Collected via Trimble GPS)
- Flowline Location (Collected via Trimble GPS)

**Notes**

- 1) All locations are approximate unless otherwise noted.
- 2) Buried infrastructure has been spatially projected.

GPS – Global Positioning System  
 PID – Photoionization Detector  
 ppm – Parts per million

0 ft.      250 ft.      500 ft.

Image Source: Google Earth; Google 2021  
 Projection: WGS 1984, UTM Zone 13 North

DATE:	April 4, 2025
DESIGNED BY:	J. Whritenour
DRAWN BY:	L. Reed



**Noble Energy, Inc. – 100322 – DJ Basin**  
**Wolfe USX CC07-09, 10, 11, 12, 25 Flowlines**  
 NESE, Section 7, Township 4 North, Range 63 West  
 Weld County, Colorado

**SOIL SAMPLE  
 LOCATION MAP  
 (FLOWLINE)**

**FIGURE  
 2**