

FLOWLINE DECOMMISSIONING REPORT
SH FARMS 17-03, C17-06, & C17-19 FLOWLINES

ECMC SPILL TRACKING # 488609, 488610,
488611, 488614, 488615, 488616, 488617,
& 488618

ECMC REMEDIATION # 34145 & 34708

Prepared for:

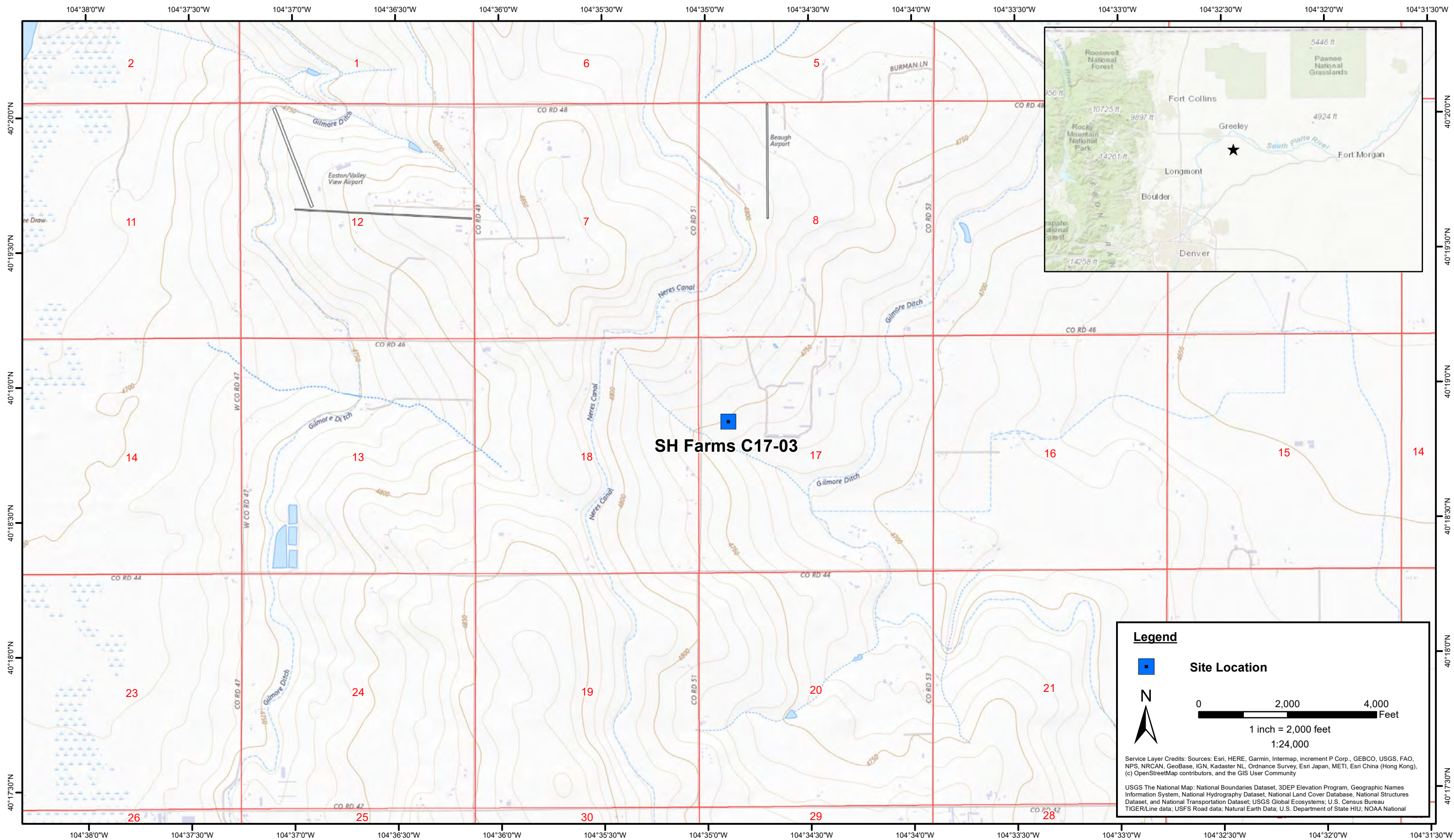


1099 18th Street
Suite 1500
Denver, CO 80202


Prepared by:




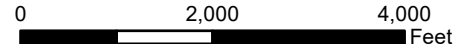
4725 Independence Street
Wheat Ridge, CO 80033



Legend

 **Site Location**




 0 2,000 4,000 Feet
 1 inch = 2,000 feet
 1:24,000

Service Layer Credits: Sources: Esri, HERE, Garmin, Intermap, increment P Corp., GEBCO, USGS, FAO, NPS, NRCAN, GeoBase, IGN, Kadaster NL, Ordnance Survey, Esri Japan, METI, Esri China (Hong Kong), (c) OpenStreetMap contributors, and the GIS User Community

USGS The National Map: National Boundaries Dataset, 3DEP Elevation Program, Geographic Names Information System, National Hydrography Dataset, National Land Cover Database, National Structures Dataset, and National Transportation Dataset; USGS Global Ecosystems; U.S. Census Bureau TIGER/Line data; USFS Road data; Natural Earth Data; U.S. Department of State HIU; NOAA National

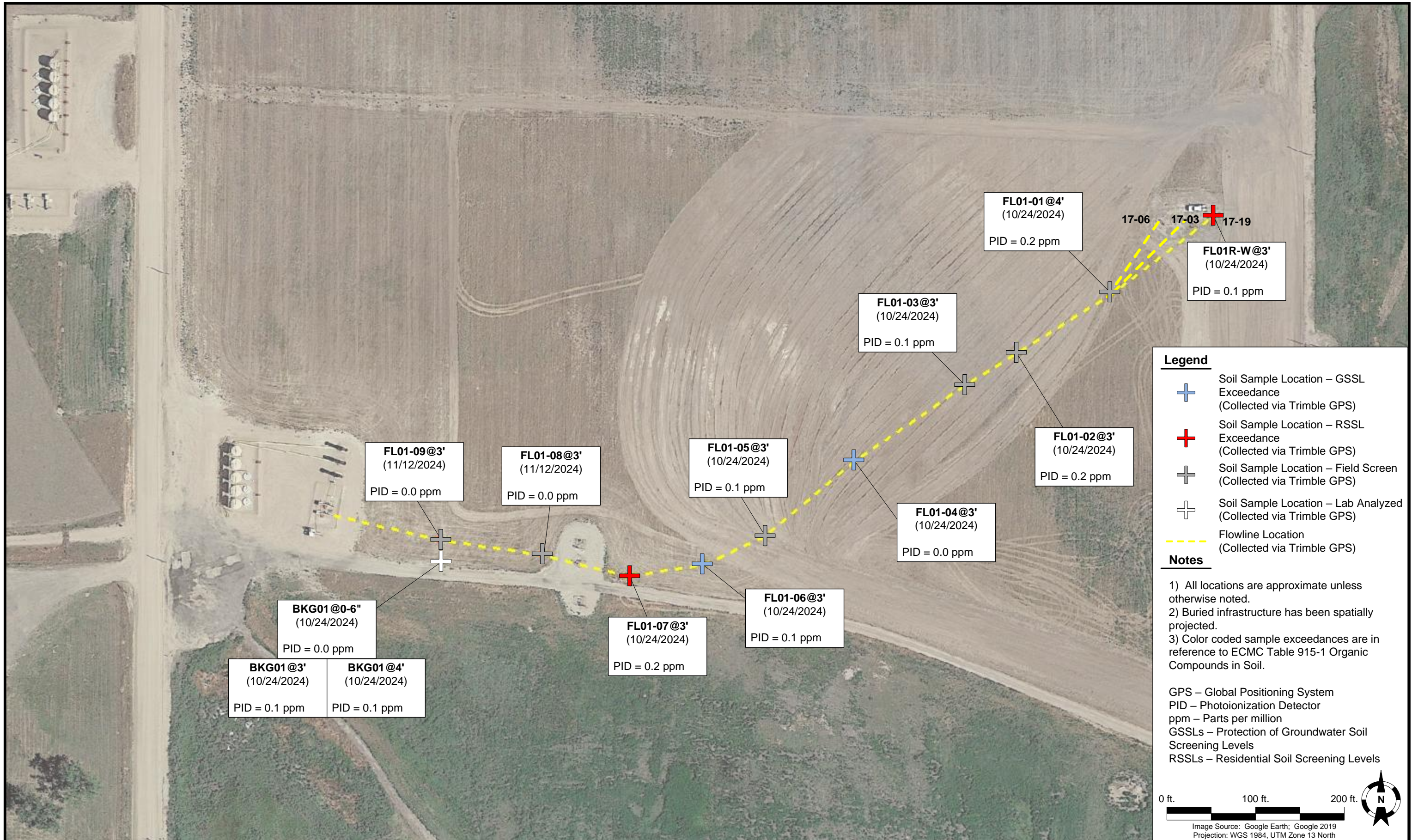
DATE:	November 2024
DESIGNED BY:	J. Whritenour
DRAWN BY:	L. Reed



Noble Energy Inc. - 100322 - DJ Basin
SH Farms C17-03
 SWNW, Section 17, Township 4 North, Range 64 West
 Weld County, Colorado

Site Location Map

Figure
1



DATE: May 23, 2025

DESIGNED BY: J. Whritenour

DRAWN BY: L. Bohannon



Noble Energy, Inc. – 100322 – DJ Basin
SH Farms 17-03, C17-06 & C17-19 Flowlines
 SWNW, Section 17, Township 4 North, Range 64 West
 Weld County, Colorado

SOIL SAMPLE LOCATION MAP
 (10/24/2024 & 11/12/2024)

FIGURE 2

TABLE 1
FIELD DATA SUMMARY TABLE
NOBLE ENERGY INC. - 100322
SH FARMS 17-03, C17-06 C17-19 FLOWLINES, WELD COUNTY, COLORADO
REM #34145 #34708



Sample ID	Sample Date	Depth (ft. bgs)	GPS Data ⁽¹⁾		PDOP Value	VOC Concentration ⁽²⁾ (ppm)
			Latitude/Longitude			
FL01-01@3'	10/24/2024	3	40.315188	-104.579867	0.8	0.0
FL01-02@3'	10/24/2024	3	40.315006	-104.580251	0.9	0.2
FL01-03@3'	10/24/2024	3	40.314905	-104.580462	0.9	0.1
FL01-04@3'	10/24/2024	3	40.314675	-104.580904	0.9	0.0
FL01-05@3'	10/24/2024	3	40.314441	-104.581274	0.8	0.1
FL01-06@3'	10/24/2024	3	40.314354	-104.581524	1.1	0.1
FL01-07@3'	10/24/2024	3	40.314321	-104.581819	0.8	0.2
FL01R-W@3'	10/24/2024	3	40.315426	-104.579455	0.9	0.1
FL01-08@3'	11/12/2024	3	40.314391	-104.582177	0.9	0.0
FL01-09@3'	11/12/2024	3	40.314439	-104.582590	0.8	0.0
BKG01@0-6"	10/24/2024	0-0.5	40.314368	-104.582584	1.1	0.0
BKG01@3'	10/24/2024	3	40.314368	-104.582584	1.1	0.1
BKG01@4'	10/24/2024	4	40.314368	-104.582584	1.1	0.1

Notes:

1. Global Positioning System (GPS) data is provided in decimal degrees using North American Datum (NAD) 83 UTM Zone 13 North.

2. Volatile organic compound (VOC) concentrations are measured in the field using a photoionization detector (PID).

PDOP = Position Dilution of Precision

ppm = Parts per million

ft. = Feet

bgs = Below ground surface

TABLE 2
SUMMARY OF VOLATILE ORGANIC SOIL CHEMISTRY DATA
NOBLE ENERGY INC. - 100322
SH FARMS 17-03, C17-06 C17-19 FLOWLINES, WELD COUNTY, COLORADO
REM #34145 #34708



Sample ID	Sample Date	Depth (ft. bgs)	Benzene (mg/kg)	Toluene (mg/kg)	Ethyl-Benzene (mg/kg)	Xylenes (mg/kg)	1,2,4-Trimethyl-Benzene (mg/kg)	1,3,5-Trimethyl-Benzene (mg/kg)	Naphthalene (mg/kg)	TPH (mg/kg)	TPH GRO (mg/kg)	TPH DRO (mg/kg)	TPH ORO (mg/kg)
ECMC Table 915-1 Limits (Residential SSL)			1.2	490	5.8	58	30	27	2	500	500**		
ECMC Table 915-1 Limits (Protection of Groundwater SSL)			0.0026	0.69	0.78	9.9	0.0081	0.0087	0.0038	500	500**		
SH FARMS C17-03 Flowline													
FL01-04@3'	10/24/2024	3	<0.0020	<0.0050	<0.0050	<0.010	<0.0050	<0.0050	<0.0038	<500	<0.50	<50	<50
FL01-06@3'	10/24/2024	3	<0.0020	<0.0050	<0.0050	<0.010	<0.0050	<0.0050	0.18	<500	<0.50	<50	<50
FL01-07@3'	10/24/2024	3	<0.0020	<0.0050	<0.0050	<0.010	<0.0050	<0.0050	<0.0038	86	<0.50	86	<50
SH FARMS C17-06 Flowline													
FL01-04@3'	10/24/2024	3	<0.0020	<0.0050	<0.0050	<0.010	<0.0050	<0.0050	<0.0038	<500	<0.50	<50	<50
FL01-06@3'	10/24/2024	3	<0.0020	<0.0050	<0.0050	<0.010	<0.0050	<0.0050	0.0044	<500	<0.50	<50	<50
FL01-07@3'	10/24/2024	3	<0.0020	<0.0050	<0.0050	<0.010	<0.0050	<0.0050	<0.0038	<500	<0.50	<50	<50
SH FARMS C17-19 Flowline													
FL01-04@3'	10/24/2024	3	<0.0020	<0.0050	<0.0050	<0.010	<0.0050	<0.0050	<0.0038	<500	<0.50	<50	<50
FL01-06@3'	10/24/2024	3	<0.0020	<0.0050	<0.0050	<0.010	<0.0050	<0.0050	0.010	<500	<0.50	<50	<50
FL01-07@3'	10/24/2024	3	<0.0020	<0.0050	<0.0050	<0.010	<0.0050	<0.0050	<0.0038	<500	<0.50	<50	<50
FL01R-W@3'	10/24/2024	3	<0.0020	<0.0050	<0.0050	<0.010	<0.0050	<0.0050	<0.0038	660	<0.50	420	140
Backgrounds													
BKG01@0-6"	10/24/2024	0-0.5	<0.0020	<0.0050	<0.0050	<0.010	<0.0050	<0.0050	<0.0038	<500	<0.50	<50	<50
BKG01@3'	10/24/2024	3	<0.0020	<0.0050	<0.0050	<0.010	<0.0050	<0.0050	<0.0038	<500	<0.50	<50	<50
BKG01@4'	10/24/2024	4	<0.0020	<0.0050	<0.0050	<0.010	<0.0050	<0.0050	<0.0038	<500	<0.50	<50	<50

Notes:

ECMC = Energy & Carbon Management Commission

(<) = Analytical result is less than the indicated laboratory reporting limit.

TPH-GRO = Total petroleum hydrocarbons - gasoline range organics

TPH-DRO = Total petroleum hydrocarbons - diesel range organics

TPH-ORO = Total petroleum hydrocarbons - oil range organics

mg/kg = Milligrams per kilogram

ft. = Feet

bgs = Below ground surface

Bold values exceed the ECMC Table 915-1 limit(s).

Pink & blue highlighted soil analytical values indicate an exceedance of the referenced soil screening level (SSL).

** Summation of GRO+DRO+ORO must be less than 500 mg/kg.

TABLE 3
SUMMARY OF POLYCYCLIC AROMATIC HYDROCARBON SOIL CHEMISTRY DATA
NOBLE ENERGY INC. - 100322
SH FARMS 17-03, C17-06 C17-19 FLOWLINES, WELD COUNTY, COLORADO
REM #34145 #34708



Sample ID	Sample Date	Depth (ft. bgs)	Acenaphthene (mg/kg)	Anthracene (mg/kg)	Benzo (a) Anthracene (mg/kg)	Benzo (a) Pyrene (mg/kg)	Benzo (b) Fluoranthene (mg/kg)	Benzo (k) Fluoranthene (mg/kg)	Chrysene (mg/kg)	Dibenzo (a,h) Anthracene (mg/kg)	Fluoranthene (mg/kg)	Fluorene (mg/kg)	Indeno (1,2,3-cd) Pyrene (mg/kg)	Pyrene (mg/kg)	1-Methyl - Naphthalene (mg/kg)	2-Methyl - Naphthalene (mg/kg)
ECMC Table 915-1 Limits (Residential SSL)			360	1,800	1.1	0.11	1.1	11	110	0.11	240	240	1.1	180	18	24
ECMC Table 915-1 Limits (Protection of Groundwater SSL)			0.55	5.8	0.011	0.24	0.3	2.9	9	0.096	8.9	0.54	0.98	1.3	0.006	0.019
SH FARMS C17-03 Flowline																
FL01-04@3'	10/24/2024	3	<0.00500	0.00502	0.00784	<0.00500	0.00828	<0.00500	0.00757	<0.00500	0.0210	<0.00500	<0.00500	0.0181	<0.00500	<0.00500
FL01-06@3'	10/24/2024	3	0.0407	0.0552	0.0736	0.0472	0.0734	0.0259	0.0701	0.00844	0.203	0.0415	0.0333	0.171	0.00815	0.0184
FL01-07@3'	10/24/2024	3	0.0413	0.138	0.419	0.337	0.528	0.170	0.413	0.0396	0.724	0.0500	0.204	0.768	<0.00500	<0.00500
SH FARMS C17-06 Flowline																
FL01-04@3'	10/24/2024	3	0.0521	0.0518	0.0790	0.0500	0.0889	0.0337	0.0640	<0.00500	0.209	0.0578	0.103	0.395	<0.00500	0.0112
FL01-06@3'	10/24/2024	3	0.0463	0.0621	0.0744	0.0480	0.101	0.0351	0.0648	<0.00500	0.200	0.0528	0.0874	0.339	<0.00500	0.0101
FL01-07@3'	10/24/2024	3	0.0351	0.115	0.403	0.305	0.431	0.220	0.413	<0.00500	0.774	0.0405	0.286	0.841	<0.00500	<0.00500
SH FARMS C17-19 Flowline																
FL01-04@3'	10/24/2024	3	<0.00500	0.00705	0.00877	0.00709	0.0102	<0.00500	0.00863	<0.00500	0.0259	<0.00500	0.00675	0.0189	<0.00500	<0.00500
FL01-06@3'	10/24/2024	3	0.0192	0.0249	0.0292	0.0192	0.0284	0.00971	0.0280	<0.00500	0.0940	0.0196	0.0147	0.0632	<0.00500	<0.00500
FL01-07@3'	10/24/2024	3	0.0606	0.145	0.355	0.266	0.383	0.125	0.365	0.0384	0.956	0.0723	0.189	0.709	<0.00500	<0.00500
FL01R-W@3'	10/24/2024	3	0.0225	0.100	0.164	0.113	0.157	0.0524	0.157	0.0197	0.479	0.0401	0.0908	0.314	<0.00500	<0.00500
Backgrounds																
BKG01@0-6"	10/24/2024	0-0.5	<0.00500	<0.00500	<0.00500	<0.00500	<0.00500	<0.00500	<0.00500	<0.00500	<0.00500	<0.00500	<0.00500	<0.00500	<0.00500	<0.00500
BKG01@3'	10/24/2024	3	<0.00500	<0.00500	<0.00500	<0.00500	<0.00500	<0.00500	<0.00500	<0.00500	<0.00500	<0.00500	<0.00500	<0.00500	<0.00500	<0.00500
BKG01@4'	10/24/2024	4	<0.00500	<0.00500	<0.00500	<0.00500	<0.00500	<0.00500	<0.00500	<0.00500	<0.00500	<0.00500	<0.00500	<0.00500	<0.00500	<0.00500

Notes:
ECMC = Colorado Energy & Carbon Management Commission
(<) = Analytical result is less than the indicated laboratory reporting limit.
ft. = Feet
bgs = Below ground surface
mg/kg = Milligrams per kilogram
Bold values exceed the ECMC Table 915-1 limit(s).
Pink & blue highlighted soil analytical values indicate an exceedance of the referenced soil screening level (SSL).

TABLE 4
SUMMARY OF SOIL SUITABILITY FOR RECLAMATION
NOBLE ENERGY INC. - 100322
SH FARMS 17-03, C17-06 C17-19 FLOWLINES, WELD COUNTY, COLORADO
REM #34145 #34708



Sample ID	Sample Date	Depth (ft. bgs)	pH (Standard Units)	EC (mmhos/cm)	SAR (Standard Units)	Boron (mg/L)	
ECMC Table 915-1 Soil Suitability Limits			6 - 8.3	<4	<6	2	
SH FARMS C17-03 Flowline							
FL01-04@3'	10/24/2024	3	7.56	4.25	4.84	<2.00	
FL01-06@3'	10/24/2024	3	8.02	1.63	3.81	<2.00	
FL01-07@3'	10/24/2024	3	7.92	0.804	1.43	<2.00	
SH FARMS C17-06 Flowline							
FL01-04@3'	10/24/2024	3	7.59	3.42	3.51	<2.00	
FL01-06@3'	10/24/2024	3	8.27	1.24	3.17	<2.00	
FL01-07@3'	10/24/2024	3	8.19	0.833	1.23	<2.00	
SH FARMS C17-19 Flowline							
FL01-04@3'	10/24/2024	3	7.76	4.01	4.06	<2.00	
FL01-06@3'	10/24/2024	3	8.27	1.83	4.00	<2.00	
FL01-07@3'	10/24/2024	3	8.24	0.774	2.06	<2.00	
FL01R-W@3'	10/24/2024	3	7.89	1.04	1.87	<2.00	
Backgrounds							
BKG01@0-6"	10/24/2024	0-0.5	7.83	2.06	1.28	<2.00	
BKG01@3'	10/24/2024	3	7.94	2.44	2.53	<2.00	
BKG01@4'	10/24/2024	4	8.14	1.85	2.80	<2.00	
Maximum Background Concentration				-	2.44	-	-

Notes:

ECMC = Colorado Energy & Carbon Management Commission

EC = Electrical conductivity

SAR = Sodium adsorption ratio

mmhos/cm = millimhos per centimeter

mg/L = milligram per liter

(<) = Analytical result is less than the indicated laboratory reporting limit.

ft. = Feet

bgs = Below ground surface

NA = Constituent not analyzed

Bold faced values exceed the ECMC Table 915-1 limit(s), but are within background concentrations.

Bold faced values exceed the ECMC Table 915-1 limit(s) and native background concentrations.

Brown highlighted soil analytical values indicate a regulatory exceedance.

TABLE 5
SUMMARY OF METALS IN SOIL CHEMISTRY DATA
NOBLE ENERGY INC. - 100322
SH FARMS 17-03, C17-06 C17-19 FLOWLINES, WELD COUNTY, COLORADO
REM #34145 #34708



Sample ID	Sample Date	Depth (ft. bgs)	Arsenic (mg/kg)	Barium (mg/kg)	Cadmium (mg/kg)	Chromium (VI) ^[1] (mg/kg)	Copper (mg/kg)	Lead (mg/kg)	Nickel (mg/kg)	Selenium (mg/kg)	Silver (mg/kg)	Zinc (mg/kg)
ECMC Table 915-1 Limits (Residential SSL)			0.68	15,000	71	0.3	3,100	400	1,500	390	390	23,000
ECMC Table 915-1 Limits (Protection of Groundwater SSL)			0.29	82	0.38	0.00067	46	14	26	0.26	0.8	370
SH FARMS C17-03 Flowline												
FL01-04@3'	10/24/24	3	2.05	69.4	0.400	<0.30	21.3	18.3	6.24	<0.260	0.0377	468
FL01-06@3'	10/24/24	3	2.26	52.6	<0.200	<0.30	3.92	4.42	3.93	<0.260	0.0254	14.8
FL01-07@3'	10/24/24	3	2.62	83.5	0.201	<0.30	7.12	5.63	4.83	<0.260	0.0285	19.1
SH FARMS C17-06 Flowline												
FL01-04@3'	10/24/24	3	2.17	68.1	0.331	<0.30	56.7	13.0	5.71	<0.260	0.0336	92.1
FL01-06@3'	10/24/24	3	3.90	54.9	<0.200	<0.30	4.48	5.95	4.49	<0.260	0.0274	17.3
FL01-07@3'	10/24/24	3	2.55	81.4	<0.200	<0.30	6.40	4.95	4.38	<0.260	0.0242	18.4
SH FARMS C17-19 Flowline												
FL01-04@3'	10/24/24	3	1.96	63.7	0.290	<0.30	16.7	16.5	4.81	<0.260	0.0276	72.8
FL01-06@3'	10/24/24	3	1.97	65.6	0.295	<0.30	14.0	12.1	4.54	<0.260	0.0282	58.7
FL01-07@3'	10/24/24	3	2.53	83.7	<0.200	<0.30	5.90	4.85	4.22	<0.260	0.0227	18.4
FL01R-W@3'	10/24/24	3	2.26	85.9	<0.200	<0.30	6.13	7.91	3.93	<0.260	0.0279	62.0
Background												
BKG01@0-6"	10/24/24	0-0.5	2.93	99.9	<0.200	<0.30	15.2	5.58	4.02	<0.260	0.0217	26.3
BKG01@3'	10/24/24	3	3.07	81.0	0.226	<0.30	6.29	8.22	5.36	<0.260	0.0331	20.6
BKG01@4'	10/24/24	4	3.48	81.7	<0.200	<0.30	4.60	6.63	5.75	<0.260	0.0410	19.5
Maximum Background Concentration X 1.25			4.35	125	0.283	-	19.0	10.3	-	-	-	32.9

Notes:

1. Compound falls within ECMC Table 915-1 Footnote 9.

ECMC = Energy & Carbon Management Commission

(<) = Analytical result is less than the indicated laboratory reporting limit.

mg/kg = Milligrams per kilogram

ft. = Feet

bgs = Below ground surface

Bold faced values exceed the ECMC Table 915-1 limit(s), but are within 1.25x background concentrations.



Red faced values exceed the ECMC Table 915-1 limit(s) and native background concentrations.

Pink & blue highlighted soil analytical values indicate an exceedance of the referenced soil screening level (SSL).

					
Equipment ID: FLOWLINES		Equipment Type:	Equipment ID:		Equipment Type:
Material:	Volume:	Contents:	Material:	Volume:	Contents:
Notes/Conditions: FACING S.8			Notes/Conditions:		



Equipment ID: FL01-01 @4'		Equipment Type:		Equipment ID: FL01-01WEST@3?		Equipment Type:	
Material:	Volume:	Contents:		Material:	Volume:	Contents:	
Notes/Conditions: FACING W.				Notes/Conditions: FACING W.			

					
Material:	Volume:	Contents:	Material:	Volume:	Contents:
Notes/Conditions: FACING W.			Notes/Conditions: FACING W.		



Equipment ID: FL01-04@3'		Equipment Type:		Equipment ID: FL01-05@3'		Equipment Type:	
Material:	Volume:	Contents:		Material:	Volume:	Contents:	
Notes/Conditions: FACING W. TRASH PRESENT IN EXCAVATION. POSSIBLE PERSONAL DUMP?				Notes/Conditions: FACING W.			



Equipment ID: FL01-06@3'		Equipment Type:		Equipment ID: FL01-07@3'		Equipment Type:	
Material:	Volume:	Contents:		Material:	Volume:	Contents:	
Notes/Conditions: FACING W.				Notes/Conditions: FACNG W.			



SITE NAME: SH Farms C17-6							DATE: 10/24/2024	REM. PROJECT #: 34708	WEATHER: Sunny, 40s	
SITE DIRECTIONS: CR 46//51 S. 1mi, E into site							CLIENT: Noble			
LEGALS AND LAT/LONG: 40.31542363, -104.5794432							TASMAN PERSONNEL: MW, CK			
SOIL TYPES: Well Graded Sand - SW							SURFACE GRADIENT: North			
SOIL SAMPLING							FACILITY INFRASTRUCTURE			
Date/Time	Soil Sample ID	PID (ppm)	Visual	Olfactory	Photo?	Grab or Lab Sample?	EQUIPMENT	Quantity	Photo?	
							Above Ground Storage Tank (AST)			
							Buried or Partially Buried Vessel			
10-24-2024 10:36	FL01-01@4'	0.0	No Staining	No Odor	Yes	Grab	Separator			
10-24-2024 10:49	FL01-02@3'	0.2	No Staining	No Odor	Yes	Grab	Emission Control Device (ECD)			
10-24-2024 10:58	FL01-03@3'	0.1	No Staining	No Odor	Yes	Grab	Dump Line			
10-24-2024 11:06	FL01-04@3'	0.0	No Staining	No Odor	Yes	Lab	Wellhead			
10-24-2024 11:11	FL01-05@3'	0.1	No Staining	No Odor	Yes	Grab	Flowline	1	✓	
10-24-2024 12:23	FL01-06@3'	0.1	No Staining	No Odor	Yes	Lab	Other:			
10-24-2024 12:28	FL01-07@3'	0.2	No Staining	No Odor	Yes	Lab	Soil Loads Removed			
							IMPACTED SOIL IDENTIFIED?			
							ESTIMATED VOLUME OF IMPACTS:			
							Date	Number	CY	
							Total Removed	0	0	
							Disposal Facility:			
							Groundwater Recovery			
							DATE GW ENCOUNTERED:		DEPTH:	
							GROUNDWATER IN CONTACT WITH IMPACTED SOIL?			
							LNAPL OR SHEEN OBSERVED ON GW?			
GROUNDWATER SAMPLING							Date	BBLs		
Date/Time	Groundwater Sample ID	Depth Collected	Turbid?	Sheen?	Odor?	Photo?				
							Total Removed	0		
							Disposal Facility:			



Equipment ID: FLOWLINES		Equipment Type:		Equipment ID:		Equipment Type:	
Material:	Volume:	Contents:		Material:	Volume:	Contents:	
Notes/Conditions: FACING S.8				Notes/Conditions:			



Equipment ID: FL01-01 @4'		Equipment Type:	
Material:	Volume:	Contents:	
Notes/Conditions: FACING W.			

Equipment ID: FL01-01WEST@3?		Equipment Type:	
Material:	Volume:	Contents:	
Notes/Conditions: FACING W.			



Equipment ID: FL01-02@3'		Equipment Type:	
Material:	Volume:	Contents:	
Notes/Conditions: FACING W.			

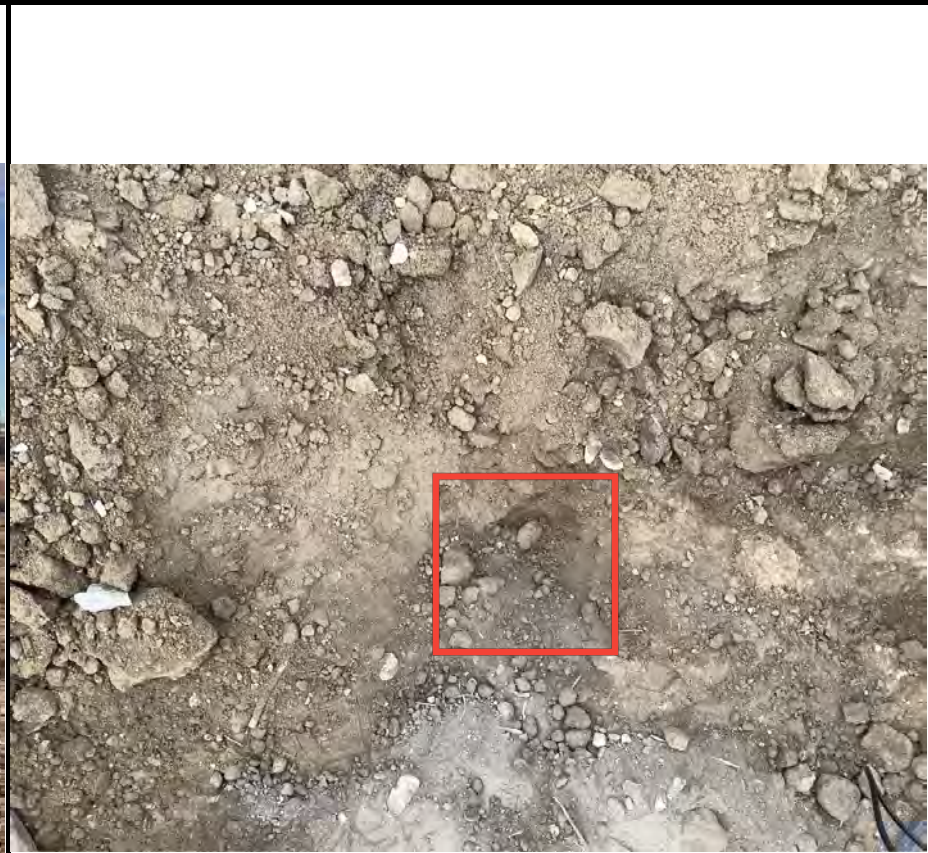
Equipment ID: FL01-03@3'		Equipment Type:	
Material:	Volume:	Contents:	
Notes/Conditions: FACING W.			



Equipment ID: FL01-04@3'		Equipment Type:		Equipment ID: FL01-05@3'		Equipment Type:	
Material:	Volume:	Contents:		Material:	Volume:	Contents:	
Notes/Conditions: FACING W. TRASH PRESENT IN EXCAVATION. POSSIBLE PERSONAL DUMP?				Notes/Conditions: FACING W.			



Equipment ID: FL01-06@3'		Equipment Type:		Equipment ID: FL01-07@3'		Equipment Type:	
Material:	Volume:	Contents:		Material:	Volume:	Contents:	
Notes/Conditions: FACING W.				Notes/Conditions: FACNG W.			





Equipment ID: FLOWLINES		Equipment Type:	
Material:	Volume:	Contents:	
Notes/Conditions: FACING S.8			

Equipment ID: FL01R-W@3'		Equipment Type:	
Material:	Volume:	Contents:	
Notes/Conditions: FACING W.			



Equipment ID: FL01-01 @ 4'		Equipment Type:		Equipment ID:		Equipment Type:	
Material:	Volume:	Contents:		Material:	Volume:	Contents:	
Notes/Conditions: FACING W.				Notes/Conditions:			

					
Equipment ID: FL01-02@3'		Equipment Type:	Equipment ID: FL01-03@3'		Equipment Type:
Material:	Volume:	Contents:	Material:	Volume:	Contents:
Notes/Conditions: FACING W.			Notes/Conditions: FACING W.		



Equipment ID: FL01-04@3'		Equipment Type:	
Material:	Volume:	Contents:	
Notes/Conditions: FACING W. TRASH PRESENT IN EXCAVATION. POSSIBLE TRASH DUMP?			

Equipment ID: FL01-05@3'		Equipment Type:	
Material:	Volume:	Contents:	
Notes/Conditions: FACING W.			

							
						Equipment ID: FL01-06@3' Equipment Type:	
Material:		Volume:	Contents:		Equipment ID: FL01-07@3' Equipment Type:		
Notes/Conditions: FACNG W.			Material:			Volume:	Contents:
			Notes/Conditions: FACING W.				



Equipment ID: BKG01@0-6", 3', 4'		Equipment Type:		Equipment ID:		Equipment Type:	
Material:	Volume:	Contents:		Material:	Volume:	Contents:	
Notes/Conditions: FACING W.				Notes/Conditions:			



SITE NAME: SH Farms C17-03, 06, 19							DATE: 11/12/2024	REM. PROJECT #:	WEATHER: Sunny, 30s
SITE DIRECTIONS: CR 44//51 0.6mi N. , E. into site							CLIENT: Noble		
LEGALS AND LAT/LONG: 40.31441479, -104.5820272							TASMAN PERSONNEL: MW, CK		
SOIL TYPES: Well Graded Sand - SW							SURFACE GRADIENT: North		
SOIL SAMPLING							FACILITY INFRASTRUCTURE		
Date/Time	Soil Sample ID	PID (ppm)	Visual	Olfactory	Photo?	Grab or Lab Sample?	EQUIPMENT	Quantity	Photo?
							Above Ground Storage Tank (AST)		
11-12-2024 12:07	FL01-08@3'	0.0	No Staining	No Odor	Yes	Grab	Buried or Partially Buried Vessel		
11-12-2024 12:27	FL01-09@3'	0.0	No Staining	No Odor	Yes	Grab	Separator		
							Emission Control Device (ECD)		
							Dump Line		
							Wellhead		
							Flowline		
							Other:		
							Soil Loads Removed		
							IMPACTED SOIL IDENTIFIED?		
							ESTIMATED VOLUME OF IMPACTS:		
							Date	Number	CY
							Total Removed	0	0
							Disposal Facility:		
							Groundwater Recovery		
							DATE GW ENCOUNTERED:	DEPTH:	
							GROUNDWATER IN CONTACT WITH IMPACTED SOIL?		
							LNAPL OR SHEEN OBSERVED ON GW?		
GROUNDWATER SAMPLING							Date	BBLs	
Date/Time	Groundwater Sample ID	Depth Collected	Turbid?	Sheen?	Odor?	Photo?			
							Total Removed	0	
							Disposal Facility:		



Equipment ID: FL01-08 @3'		Equipment Type:		Equipment ID: FL01-09 @3'		Equipment Type:	
Material:	Volume:	Contents:		Material:	Volume:	Contents:	
Notes/Conditions: Facing E.				Notes/Conditions: FACING S.			