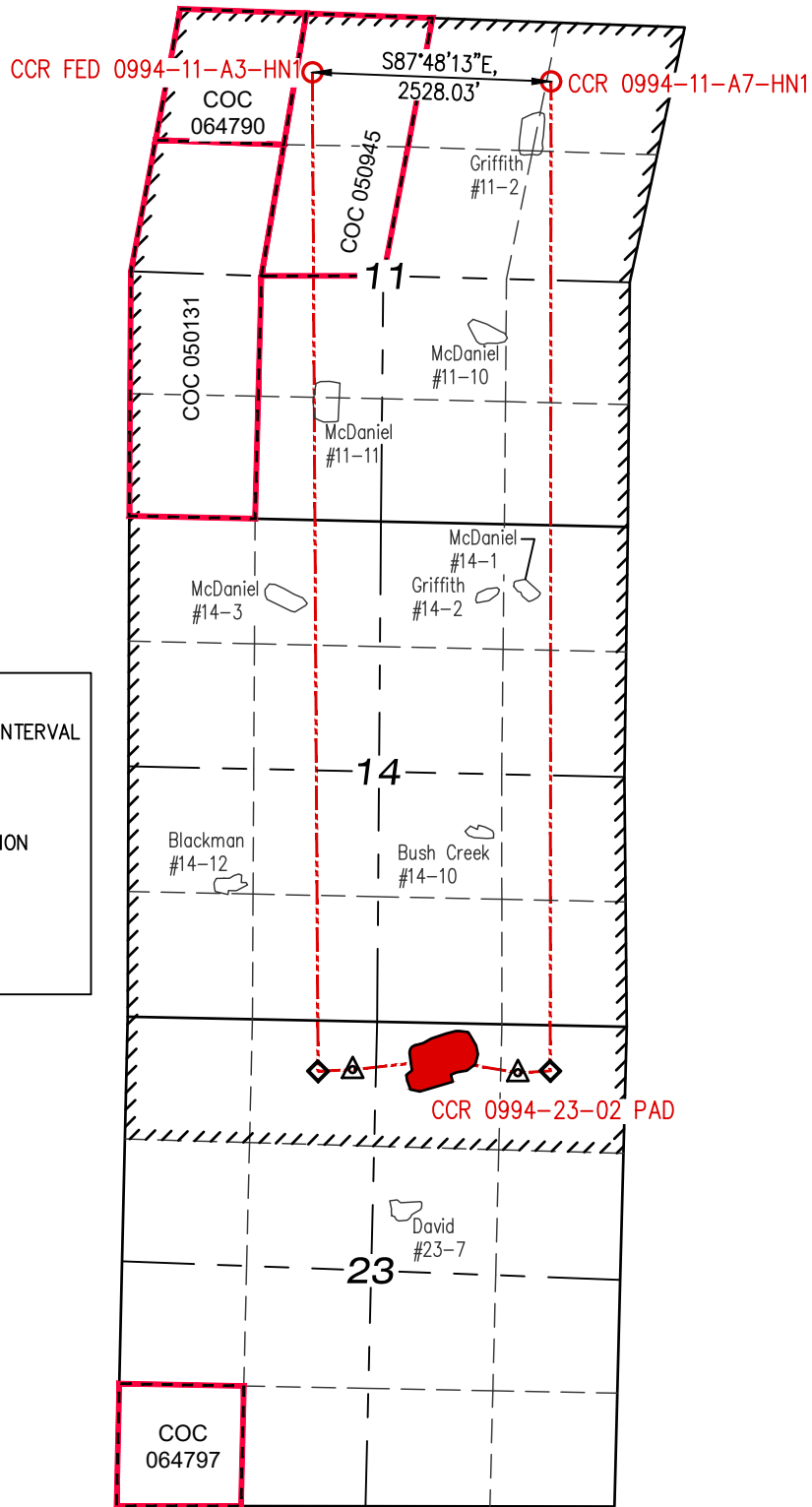


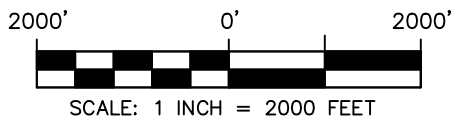
T9S, R94W, 6TH P.M.



LEGEND

- PROPOSED TOP OF COMPLETED INTERVAL
- PROPOSED LANDING LOCATION
- PROPOSED BOTTOM HOLE LOCATION
CCR 0994-23-02
- DEVELOPMENT UNIT BOUNDARY
- FEDERAL LEASE AREA

LARAMIE ENERGY, LLC



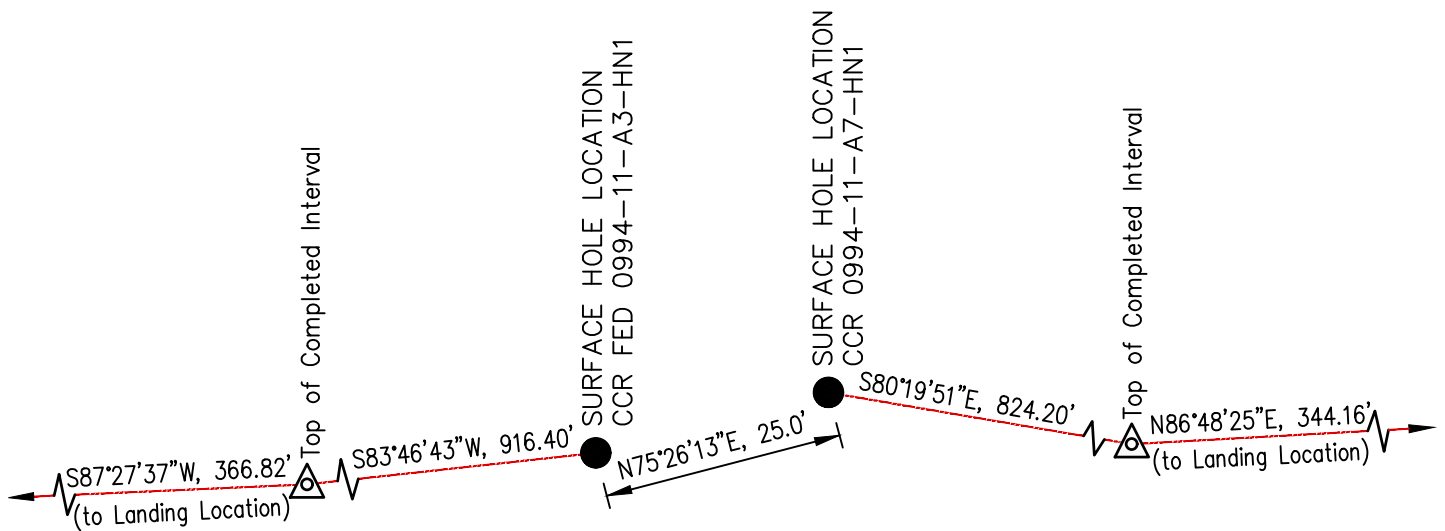
CCR 0994-23-02
 NW1/4 NE1/4 SECTION 23, T9S, R94W, 6TH P.M.
 MESA COUNTY, COLORADO

DIRECTIONAL WELL PLAT PAGE 1 OF 2

SURVEYED BY: JT/BT	DATE: 6/06/24	REV 0
DRAWN BY: CT	DATE: 9/16/24	PROJECT NO: 24-02-01



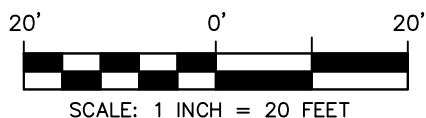
WASATCH SURVEYING ASSOCIATES
 P.O. BOX 564, FRUITA, CO 81521
 (970) 639-9270
 Email: mail@wasatchsurveying.com



LARAMIE ENERGY, LLC

CCR 0994-23-02

NW1/4 NE1/4 SECTION 23, T9S, R94W, 6TH P.M.
MESA COUNTY, COLORADO



WASATCH SURVEYING ASSOCIATES
P.O. BOX 564, FRUITA, CO 81521
(970) 639-9270
Email: mail@wasatchsurveying.com

DIRECTIONAL WELL PLAT PAGE 2 OF 2

SURVEYED BY: JT/BT	DATE: 6/06/24	REV 0
DRAWN BY: CT	DATE: 9/16/24	PROJECT NO: 24-02-01