

LEGEND

- WELLHEAD LOCATION
- ⊗ SOIL SAMPLE LOCATION
- ABOVE GROUND STORAGE TANK
- FORMER FLOW LINE
- FORMER FACILITY
- CONTAINMENT BERM
- CONTAINMENT WALL
- FENCE LINE

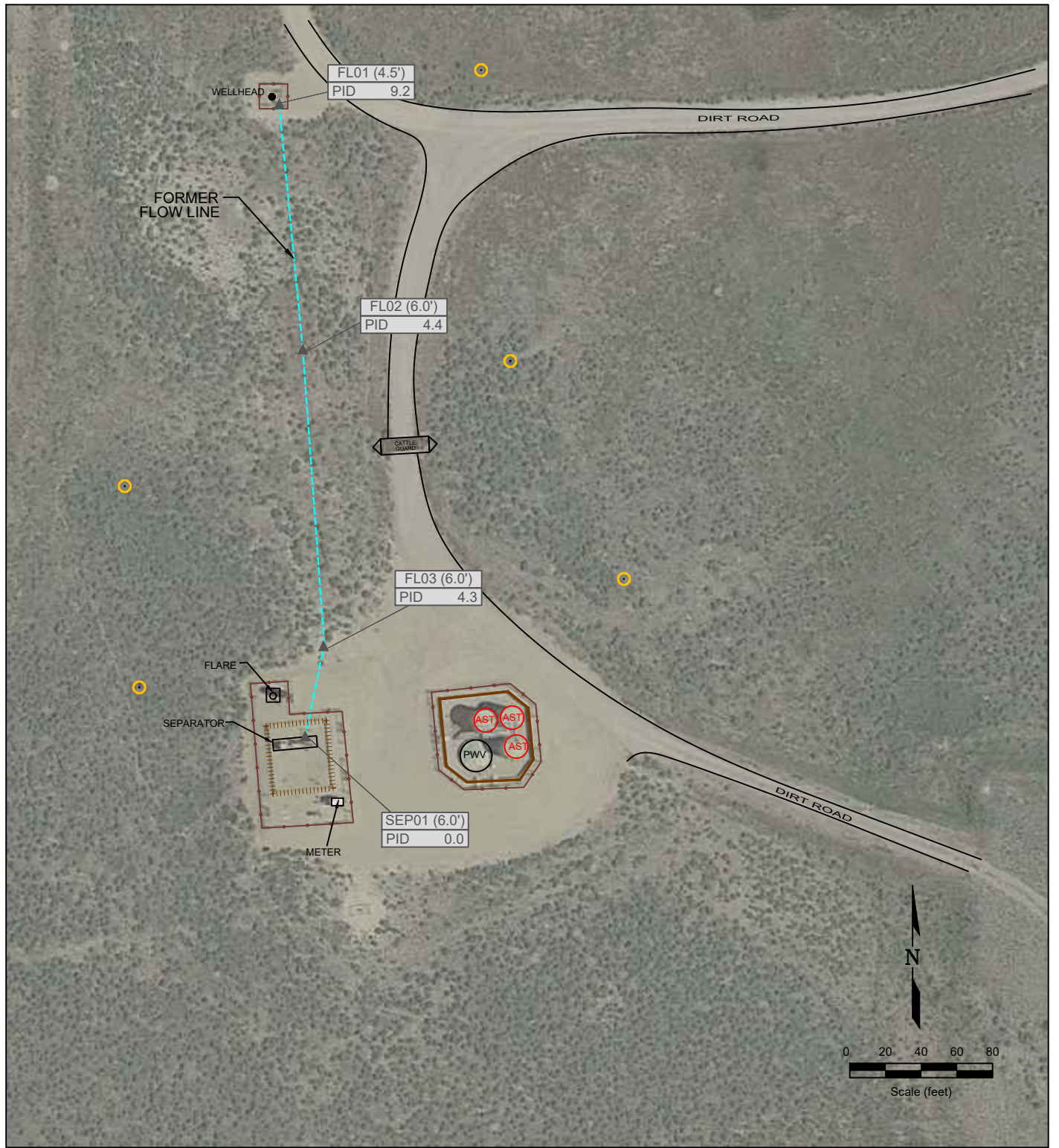
8/3/2023	DATE SAMPLED	8/3/2023	DATE SAMPLED	8/3/2023	DATE SAMPLED
FL01 (4.5')	SAMPLE ID and DEPTH (ft)	FL01 (4.5')	SAMPLE ID and DEPTH (ft)	FL01 (4.5')	SAMPLE ID & DEPTH (ft)
ACE	<0.00500	ACE	<0.00500	BA	283
Ant	<0.00500	Ant	<0.00500	CD	4.84
BaA	<0.00500	BaA	<0.00500	PE	283
BbF	<0.00500	BbF	<0.00500	NI	1.08
BaP	<0.00500	BaP	<0.00500	BE	<0.50
Chr	<0.00500	Chr	<0.00500	AG	<0.01
DBaAnt	<0.00500	DBaAnt	<0.00500	CR(V)	8.41
FLU	<0.00500	FLU	<0.00500	Z	<0.02
FL	<0.00500	FL	<0.00500		
1123cPY	<0.00500	1123cPY	<0.00500		
1MN	<0.00500	1MN	<0.00500		
2MN	<0.00500	2MN	<0.00500		
PY	<0.00500	PY	<0.00500		

Figure 1
PROPOSED SITE INVESTIGATION PLAN

Noble Energy, Inc. ~ Jepsen 1
SESW Sec. 2, T3N, R65W, 6th PM
Weld County, Colorado
40.250054°, -104.633833°

Project # CO23-217	API # 05-123-10192	Facility #
Date 3/8/24	Remediation # 27049	Filename 23217Q

REMONT ENVIRONMENTAL



LEGEND

- WELLHEAD LOCATION
- ▲ PID READING LOCATION
- ABOVE GROUND STORAGE TANK
- FORMER FACILITY
- FORMER FLOW LINE
- CONTAINMENT BERM
- CONTAINMENT WALL
- FENCE LINE

FL01 (4.5') PID READING SAMPLE IDENTIFICATION AND DEPTH (ft)
 PID 9.2 PHOTO IONIZATION DETECTION / PARTS PER MILLION

● Proposed Local Background Samples

Figure 2

PROPOSED LOCAL BACKGROUND SAMPLE LOCATIONS

Noble Energy, Inc. ~ Jepsen 1
 SESW Sec. 2, T3N, R65W, 6th PM
 Weld County, Colorado
 40.250054°, -104.633833°

Project # CO23-217	API # 05-123-10192	Facility #
Date 3/8/24	Remediation # 27049	Filename 23217Q

