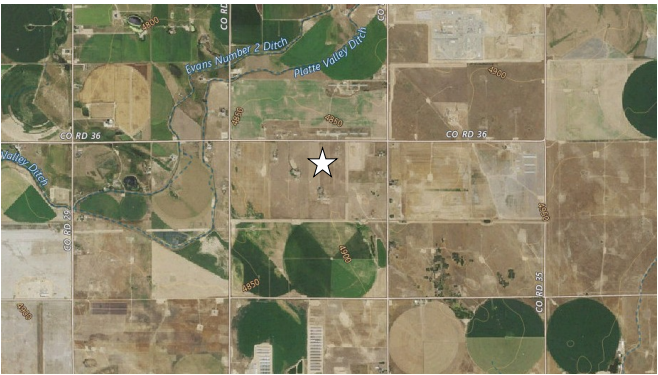


Figure 1

Site Location Map
Kerr-McGee Oil and Gas Onshore LP
Mayne 2-10A & Herrman 21-10
 NWNE Sec. 10-T3N-R66W
 Weld County, Colorado



Source: USGS 7.5 Minute Topographic Map, Platteville, CO Quadrangle

Date: 3/18/2025

