

# Inspection Photos

## 05/01/2025

**Operator:** POC-I LLC- #10386

**Location ID:** 312756

**Inspection Document #:** 712300114

## Moffat County, CO

Logan Maxwell  
Reclamation Specialist  
ECMC



**COLORADO**

**Energy & Carbon Management  
Commission**

Department of Natural Resources

Inspection Photos  
Location Name: ILES DOME UNIT  
Location ID: 312756



**Photo 1.** Photo taken from the southeast portion of the pit facility, facing SW. Photo shows overview of location.



**Photo 2.** Photo taken from southeast portion of pit facility, facing NW. Photo shows overview of location.

Inspection Photos  
Location Name: ILES DOME UNIT  
Location ID: 312756



**Photo 3.** Photo taken from southeast portion of pit facility, facing north. Photo shows overview of location.



**Photo 4.** Photo taken from the east end of the pit facility outside of the fence, facing west. Photo illustrates track-out controls not installed per good engineering practices; BMP has been installed with small gravel material, rather than larger sized coarse aggregate. Repair/install tracking BMPs.

Inspection Photos  
Location Name: ILES DOME UNIT  
Location ID: 312756



**Photo 5.** Photo taken from the east end of the pit facility outside of the fence, facing east. Photo illustrates an example of unused equipment/ trash.



**Photo 6.** Photo taken from the east end of the pit facility outside of the fence, facing northwest. Photo illustrates an example of trash/debris.

Inspection Photos  
Location Name: ILES DOME UNIT  
Location ID: 312756



**Photo 7.** Photo taken from the south end of the pit facility, facing southeast. Photo illustrates trash/debris.



**Photo 8.** Photo taken from the south end of the pit facility, facing south. Photo illustrates trash/debris.

Inspection Photos  
Location Name: ILES DOME UNIT  
Location ID: 312756



**Photo 9.** Photo taken from the east end of the pit facility outside of the fence, facing north. Photo illustrates anchor pipes, which have not been properly covered to prevent wildlife access, including birds and bats.



**Photo 10.** Photo taken from the west end of the pit facility, facing south. Photo illustrates anchor pipes, which have not been properly covered to prevent wildlife access, including birds and bats.

Inspection Photos  
Location Name: ILES DOME UNIT  
Location ID: 312756



**Photo 11.** Photo taken from the north end of the pit facility, facing northwest. Photo illustrates anchor pipes, which have not been properly covered to prevent wildlife access, including birds and bats.



**Photo 12.** Photo taken from the north end of the pit facility, facing northeast. Photo illustrates pipes without covers or protective caps. Comply with Rule 902.b. .

Inspection Photos  
Location Name: ILES DOME UNIT  
Location ID: 312756



**Photo 13.** Photo taken from the south end of the pit facility, facing northwest. Photo shows pipe equipment that has not been properly capped.



**Photo 14.** Photo taken from the south end of the pit facility, facing south. Photo example showing stained/impacted soils observed throughout areas of the pit facility.

Inspection Photos  
Location Name: ILES DOME UNIT  
Location ID: 312756



**Photo 15.** Photo taken from the south end of the pit facility, facing west. Photo example showing stained/impacted soils observed throughout areas of the pit facility.



**Photo 16.** Photo taken from the west end of the pit facility, facing north. Photo example showing stained/impacted soils observed throughout areas of the pit facility.

Inspection Photos  
Location Name: ILES DOME UNIT  
Location ID: 312756



**Photo 17.** Photo taken from the south end of the pit facility, facing south. Photo illustrates stockpile soils. BMPs to protect the stockpile pursuant to Rule 1002.c are missing or insufficient.



**Photo 18.** Photo taken from the south end of the pit facility, facing south. Photo illustrates stockpile soils. It appears this was previously topsoil based on vegetation growth on backside, but has since been partially removed and/or contaminated. BMPs to protect the stockpile pursuant to Rule 1002.c are missing or insufficient.

Inspection Photos  
Location Name: ILES DOME UNIT  
Location ID: 312756



**Photo 19.** Photo taken from the south end of the pit facility, facing northeast. Photo shows erosion degradation at the pit facility and topsoil stockpile due to stormwater runoff; BMPs to minimize erosion, degradation and sediment transport are missing or insufficient.



**Photo 20.** Photo taken from the south end of the pit facility, facing southeast. Photo shows erosion degradation at the pit facility and topsoil stockpile due to stormwater runoff; BMPs to minimize erosion, degradation and sediment transport are missing or insufficient.

Inspection Photos  
Location Name: ILES DOME UNIT  
Location ID: 312756



**Photo 21.** Photo taken from the north end of the pit facility, facing northwest. Photo illustrates seeping gulch and area surrounding sediment trap. Bank and gully erosion evident along gulch banks (red arrow demonstrates erosion).



**Photo 22.** Photo taken from the north end of the pit facility, facing north. Photo illustrates seeping gulch and area surrounding sediment trap. Bank and gully erosion evident along gulch banks (red arrow demonstrates erosion).

Inspection Photos  
Location Name: ILES DOME UNIT  
Location ID: 312756



**Photo 23.** Photo taken from the north end of the pit facility, facing northwest. Photo illustrates area surrounding sediment trap. Bank and gully erosion evident along gulch banks (red arrow demonstrates erosion).



Inspection Photos  
Location Name: ILES DOME UNIT  
Location ID: 312756



**Photo 24.** Photo taken from the east end of the pit facility, facing southeast. Photo illustrates undesirable plant species/ weedy debris (red arrow indicates Russian Thistle).



**Photo 25.** Photo taken from the east end of the pit facility, facing north. Photo example illustrates noxious weeds (red arrow indicates Canada Thistle).

Inspection Photos  
Location Name: ILES DOME UNIT  
Location ID: 312756



**Photo 26.** Photo taken from the south end of the pit facility, facing north. Impacted materials were also observed within areas of the pit and stormwater pathways, indicating impact stormwater is discharging from the Location (red arrow indicates where berm has eroded).



**Photo 27.** Photo taken from the south end of the pit facility, facing north. Photo illustrates impacted materials were also observed within areas of the pit and stormwater pathways, indicating impact stormwater is discharging from the Location (red arrow indicates where berm has eroded).



Inspection Photos  
Location Name: ILES DOME UNIT  
Location ID: 312756



**Photo 28.** Photo taken from the south end of the pit facility, facing northwest. Photo illustrates downgradient movement of produced fluids onto the road (red arrow indicates movement of fluid).



**Photo 29.** Photo taken from the south end of the pit facility, facing north. Photo illustrates downgradient movement of produced fluids onto the road and off Location (red arrow indicates movement of fluid off-site).



Inspection Photos  
Location Name: ILES DOME UNIT  
Location ID: 312756



**Photo 30.** Photo taken from the south end of the pit facility, facing north. Photo illustrates lack of wildlife protection, allowing wildlife access to the pit (red arrow indicates killdeer landing on pit).



**Photo 31.** Photo taken from the south end of the pit facility, facing north. Photo illustrates lack of wildlife protection, allowing wildlife access to the pit (red arrow indicates killdeer moving across pit surface).

Inspection Photos  
Location Name: ILES DOME UNIT  
Location ID: 312756



**Photo 32.** Photo taken from northern portion of Tank Battery facility, facing southeast. Photo shows overview of the covered pit.



**Photo 33.** Photo taken from northeast portion of Tank Battery facility, facing northwest. Photo shows overview of covered pit.

Inspection Photos  
Location Name: ILES DOME UNIT  
Location ID: 312756



**Photo 34.** Photo taken from northern portion of Tank Battery facility, facing southeast. Photos examples showing gaps observed along the perimeter of the containment and pit; BMP has not been maintained in a manner that prevents wildlife access to the pit and facility.



**Photo 35.** Photo taken from northern portion of Tank Battery facility, facing southeast. Photos examples showing gaps observed along the perimeter of the containment and pit; BMP has not been maintained in a manner that prevents wildlife access to the pit and facility.

Inspection Photos  
Location Name: ILES DOME UNIT  
Location ID: 312756



**Photo 36.** Photo taken from northern portion of Tank Battery facility, facing east. Photo shows paneling surrounding pit not maintained. Repair secondary containment.



**Photo 37.** Photo taken from entrance of Tank Battery facility, facing southeast. Photo illustrates signage.

Inspection Photos  
Location Name: ILES DOME UNIT  
Location ID: 312756



**Photo 38.** Photo taken from Tank Battery facility, facing southeast. Photo illustrates signage is missing wells, API numbers, and permit number.



**Photo 39.** Photo taken at Tank Battery facility, facing southeast. Photo shows tank in secondary containment with fluids and inadequate wildlife protection BMPs. Fluids require removal and proper disposal; wildlife protection BMPs require maintenance to prevent wildlife access to the containment measure.

Inspection Photos  
Location Name: ILES DOME UNIT  
Location ID: 312756



**Photo 40.** Photo taken at Tank Battery facility, facing northeast. Photo shows tank in secondary containment with inadequate wildlife protection BMPs.



**Photo 41.** Photo taken at Tank Battery facility, facing north. Photo shows unused pipe equipment with inadequate wildlife protection BMPs.

Inspection Photos  
Location Name: ILES DOME UNIT  
Location ID: 312756



**Photo 42.** Photo taken from Tank Battery facility, facing east. Photo illustrates examples of unused equipment.



**Photo 43.** Photo taken from Tank Battery facility, facing northeast. Photo example showing labeling at container is no longer legible.

Inspection Photos  
Location Name: ILES DOME UNIT  
Location ID: 312756



**Photo 44.** Photo taken from Tank Battery facility, facing southeast. Photo example showing fluids spilled within the containment measures at the loadlines; fluids require removal and proper disposal. Photo also example showing caps or plugs missing from the loadlines pursuant to Rule 603.i.



**Photo 45.** Photo taken from Tank Battery facility, facing southeast. Photo example showing fluids spilled within the containment measures at the loadlines; fluids require removal and proper disposal. Photo also example showing caps or plugs missing from the loadlines pursuant to Rule 603.i.

Inspection Photos  
Location Name: ILES DOME UNIT  
Location ID: 312756



**Photo 46.** Photo taken from Tank Battery facility, facing northwest. Photo example showing stained soils observed at the access road and battery facility.



**Photo 47.** Photo taken from Tank Battery facility, facing southeast. Photo example showing stained soils observed at the access road, and battery facility.

Inspection Photos  
Location Name: ILES DOME UNIT  
Location ID: 312756



**Photo 48.** Photo taken from Tank Battery facility, facing east. Photo example showing erosion degradation at the south end of the battery facility due to stormwater runoff; BMPs to manage runoff are missing or insufficient.



**Photo 49.** Photo taken from Tank Battery facility, facing west. Photo example showing erosion degradation at the south end of the battery facility due to stormwater runoff; BMPs to manage runoff are missing or insufficient.

Inspection Photos  
Location Name: ILES DOME UNIT  
Location ID: 312756



**Photo 50.** Photo taken from Tank Battery facility, facing northwest. Photo illustrates paneling on containment structure falling off. Maintain equipment.



Inspection Photos  
Location Name: ILES DOME UNIT  
Location ID: 312756



**Photo 51.** 3D model of the Location developed with the use of a sUAS- imagery dated 05/01/2025. Imagery taken from the south of the Location facing north.



Inspection Photos  
Location Name: ILES DOME UNIT  
Location ID: 312756



**Photo 52.** 3D model of the Location developed with the use of a sUAS- imagery dated 05/01/2025. Imagery taken from the west of the Location facing east.

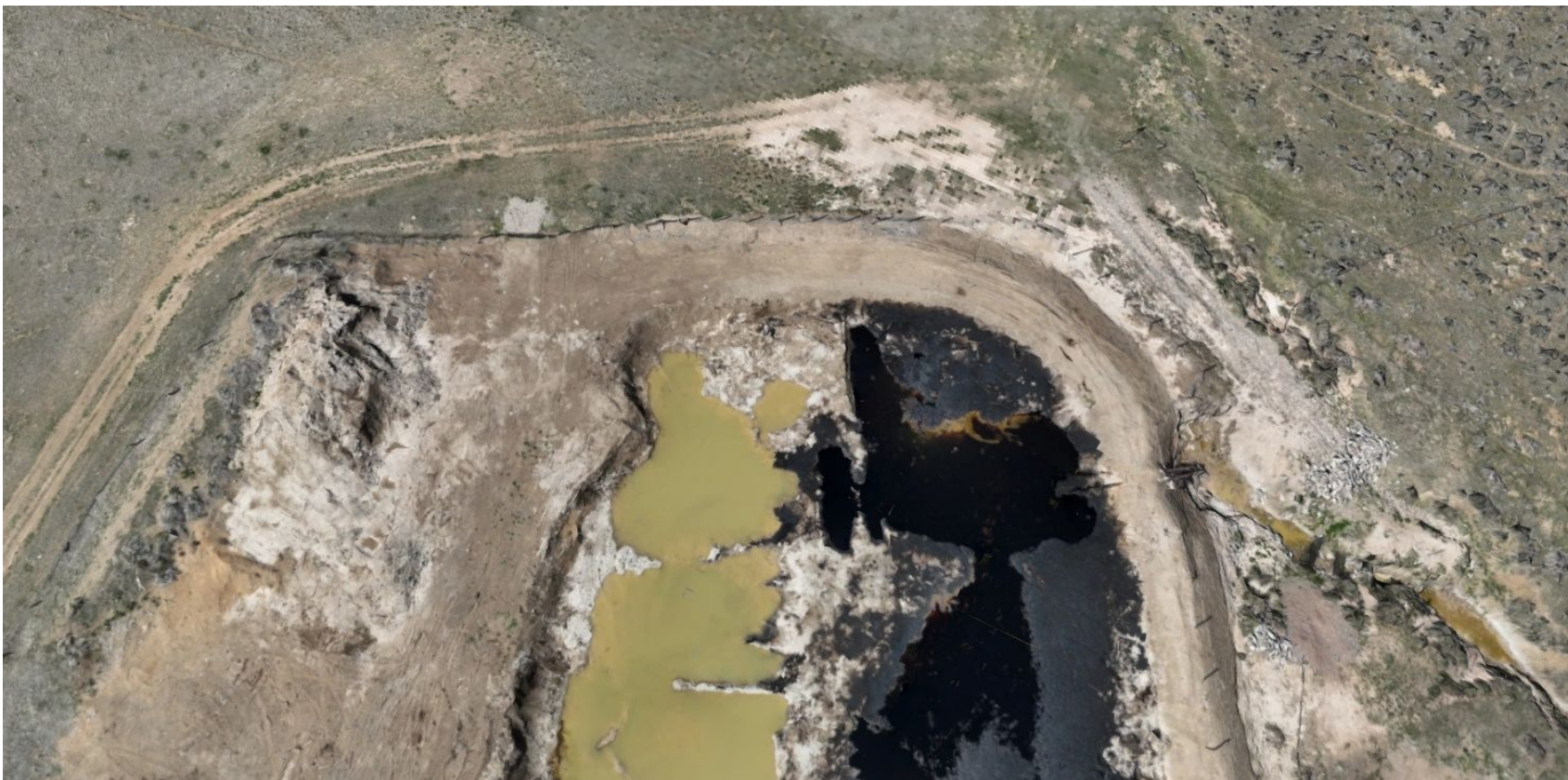


Inspection Photos  
Location Name: ILES DOME UNIT  
Location ID: 312756



**Photo 53.** 3D model of the Location developed with the use of a sUAS- imagery dated 05/01/2025. Imagery taken from the north of the Location facing south.

Inspection Photos  
Location Name: ILES DOME UNIT  
Location ID: 312756



**Photo 54.** 3D model of the Location developed with the use of a sUAS- imagery dated 05/01/2025. Imagery taken from the east of the Location facing west.

Inspection Photos  
Location Name: ILES DOME UNIT  
Location ID: 312756



**Photo 55.** 3D model of the Location developed with the use of a sUAS- imagery dated 05/01/2025. Imagery taken from the west of the Tank Battery facing east.

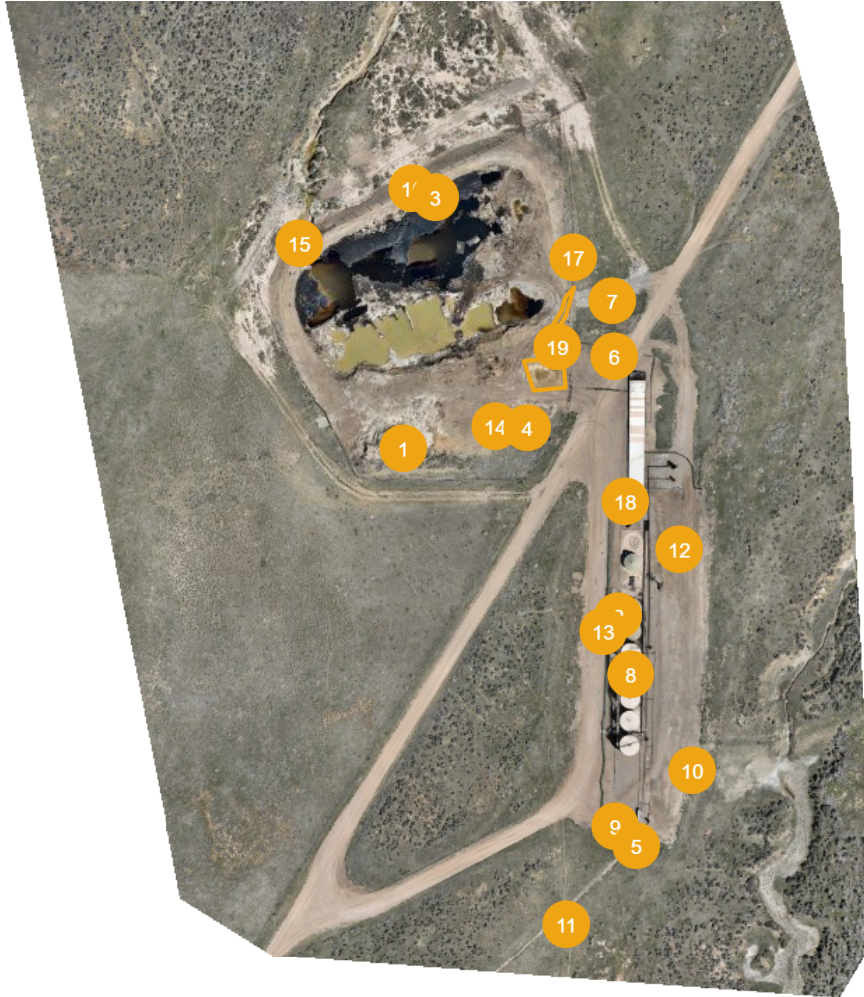
Energy & Carbon Management Commission

# POC Iles Dome #312756 Annotation Report





















Created on May 9, 2025

Captured on May 1, 2025




**Point** 

NAD83(2011) / Colorado North (ftUS) (US survey foot)

Label	Title	Elevation	Lat, Long	Northing, Easting
1 	Alleged Topsoil Stockpile	6400.22 US ft	40.3072270, -107.6898534	1362304.5 US ft, 2389330.6 US ft
2 	Loadlines	6398.66 US ft	40.3067355, -107.6890313	1362119.9 US ft, 2389555.4 US ft
3 	Weeds	6385.75 US ft	40.3079642, -107.6897313	1362572.2 US ft, 2389371.3 US ft
4 	Good Housekeeping	6392.24 US ft	40.3072866, -107.6893764	1362322.9 US ft, 2389464.1 US ft
5 	Labels	6404.10 US ft	40.3060591, -107.6889603	1361873.0 US ft, 2389569.1 US ft
6 	Good Housekeeping	6390.41 US ft	40.3074980, -107.6890462	1362397.7 US ft, 2389558.1 US ft
7 	Vehicle Track Pad	6387.29 US ft	40.3076618, -107.6890508	1362457.4 US ft, 2389558.3 US ft
8 	Wildlife protections	6421.68 US ft	40.3065623, -107.6889831	1362056.5 US ft, 2389567.3 US ft
9 	Stormwater	6399.27 US ft	40.3061188, -107.6890404	1361895.3 US ft, 2389547.3 US ft
10 	Pipe	6398.70 US ft	40.3062795, -107.6887447	1361951.8 US ft, 2389631.2 US ft
11 	Flowline	6401.53 US ft	40.3058309, -107.6892286	1361791.8 US ft, 2389492.3 US ft
12 	Stockpile	6398.48 US ft	40.3069330, -107.6887923	1362190.1 US ft, 2389623.8 US ft
13 	Stained soils	6397.98 US ft	40.3066887, -107.6890875	1362103.2 US ft, 2389539.3 US ft
14 	Impacted Material	6391.10 US ft	40.3072928, -107.6895008	1362326.1 US ft, 2389429.5 US ft
15 	Erosion	6376.29 US ft	40.3078268, -107.6902557	1362525.7 US ft, 2389223.8 US ft
16 	Seep Point	6379.25 US ft	40.3079895, -107.6898226	1362582.0 US ft, 2389346.1 US ft
17 	Netting	6384.19 US ft	40.3077885, -107.6892015	1362504.5 US ft, 2389517.4 US ft
18 	Signage	6395.73 US ft	40.3070713, -107.6890045	1362242.0 US ft, 2389565.9 US ft

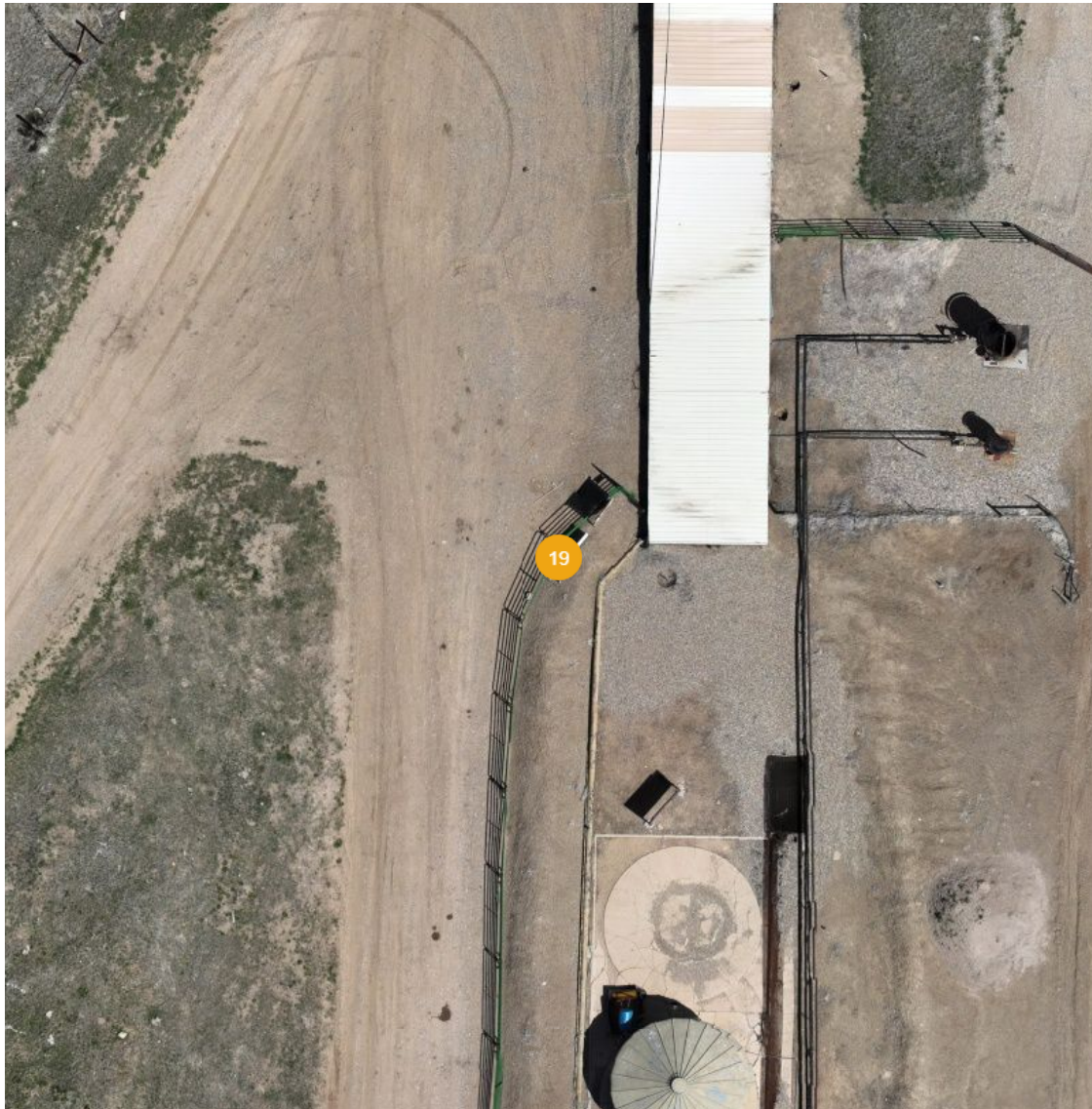
**Area** 

Label	Title	Horizontal Length	Horizontal Width	Area	Surface Area
19 	Runoff issues	--	--	1818.72 ft <sup>2</sup>	1938.57 ft <sup>2</sup>

19 - Observation

Open

May 1, 2025 at 11:34am



Details

Summary: Tank battery signage pursuant to 605.e missing. The Tank battery sign will be no less than 3 square feet and no more than 6 square feet, and will provide: A. Name of the Operator; B. Telephone number at which the Operator can be reached at all times; C. Telephone number for local emergency services (911 where available); D. The public road used to access the Tank battery site; E. Well name(s) and API number(s) associated with the Tank battery and the legal location of the Well(s); and F. Location, including the quarter/quarter section, of the Tank battery

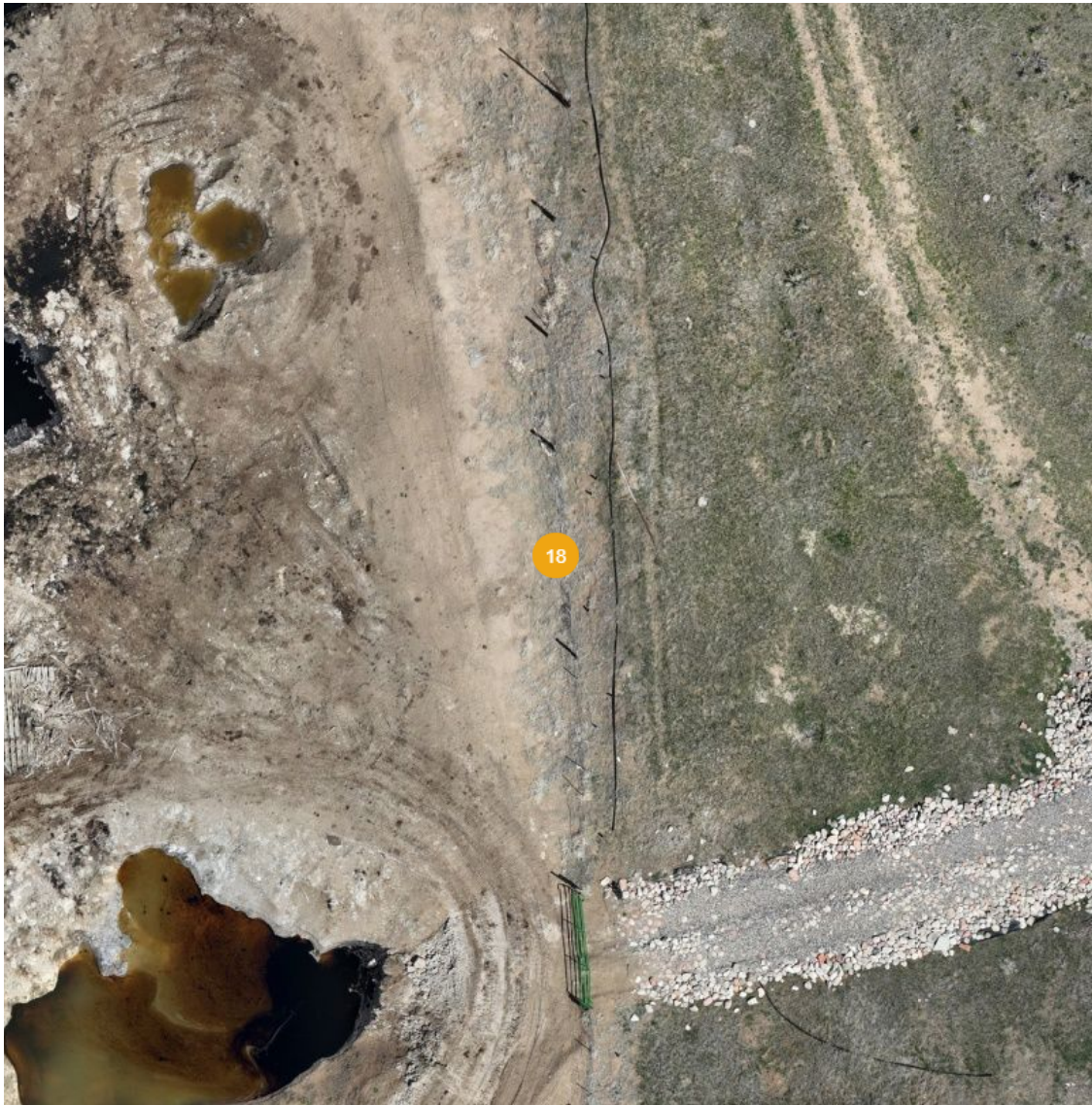
Created:	May 2, 2025, 9:19am by Aaron Trujillo
Cost of Repair:	—
Lat/Long:	40.3070713, -107.6890045
Northing:	1362242.0 US ft
Easting:	2389565.9 US ft
Elevation:	6395.73 US ft

NAD83(2011) / Colorado North (ftUS) (US survey foot)

18 - Observation

Open

May 1, 2025 at 11:34am



Details

Summary: Netting to prevent birds from accessing the pit has not been installed. Perimeter fence is also inadequate to prevent wildlife access to the pit area.

Created: May 2, 2025, 9:14am by Aaron Trujillo

Cost of Repair: —

Lat/Long: 40.3077885, -107.6892015

Northing: 1362504.5 US ft

Easting: 2389517.4 US ft

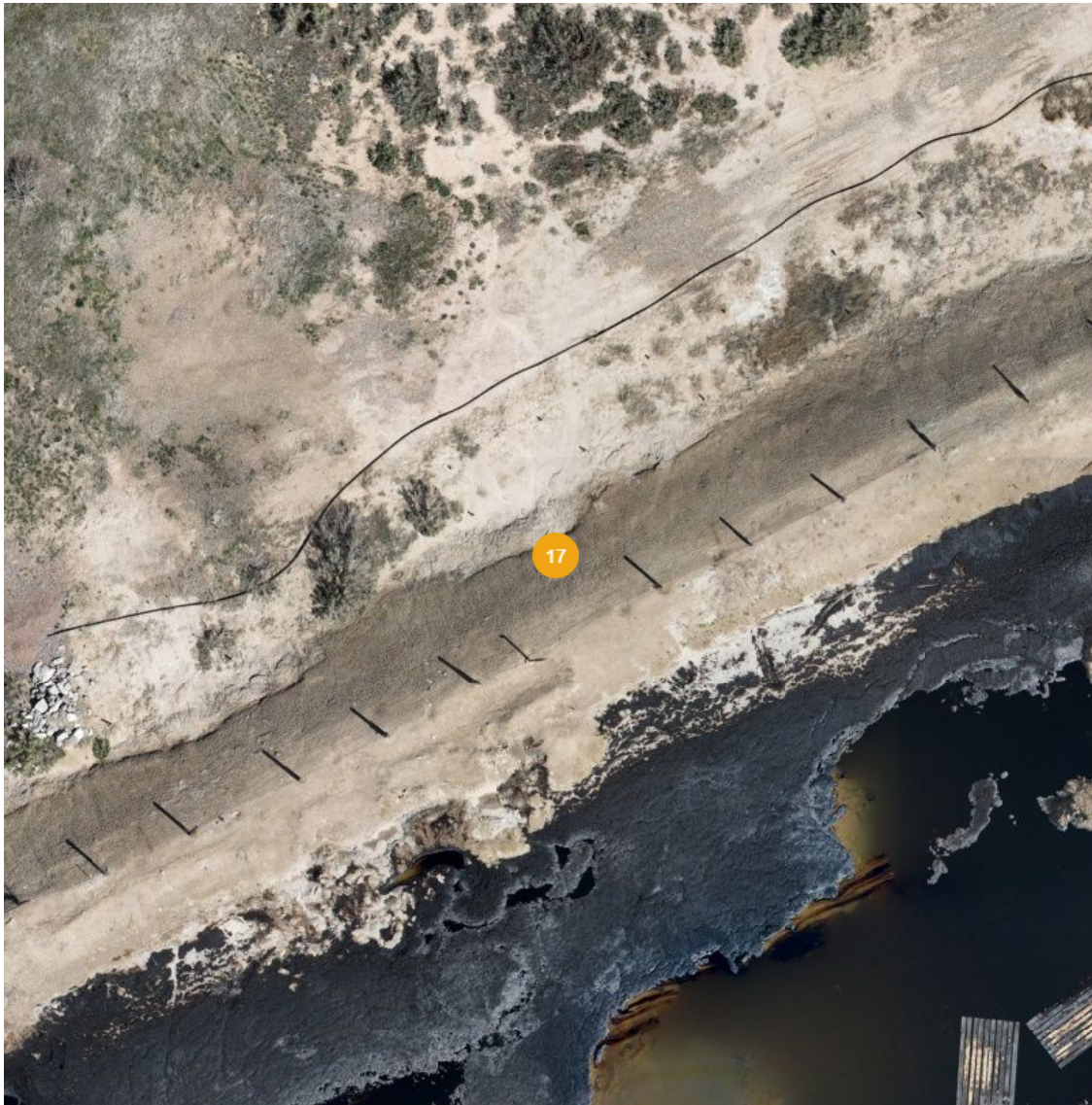
Elevation: 6384.19 US ft

NAD83(2011) / Colorado North (ftUS) (US survey foot)

17 - Observation

Open

May 1, 2025 at 11:34am



Details

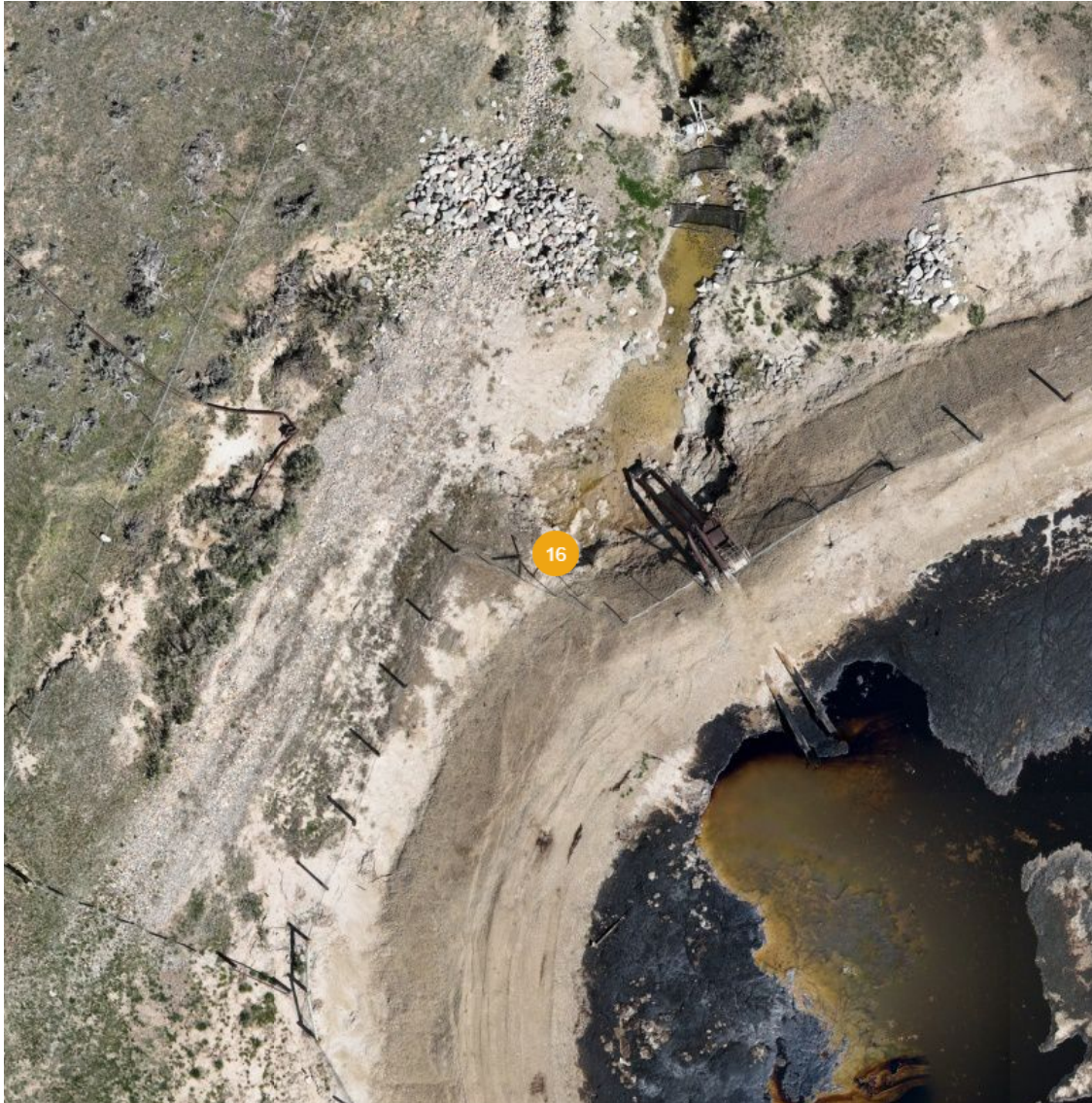
Summary:	Erosion issues and potential stability/integrity issues. EPS on site indicated seeps have occurred within these areas.
Created:	May 2, 2025, 9:13am by Aaron Trujillo
Cost of Repair:	—
Lat/Long:	40.3079895, -107.6898226
Northing:	1362582.0 US ft
Easting:	2389346.1 US ft
Elevation:	6379.25 US ft

NAD83(2011) / Colorado North (ftUS) (US survey foot)

16 - Observation

Open

May 1, 2025 at 11:34am



Details

Summary:

Created:

Cost of Repair:

Lat/Long:

Northing:

Easting:

Elevation:

Soils eroding within these areas. Headcut formation.

May 2, 2025, 9:12am by Aaron Trujillo

—

40.3078268, -107.6902557

1362525.7 US ft

2389223.8 US ft

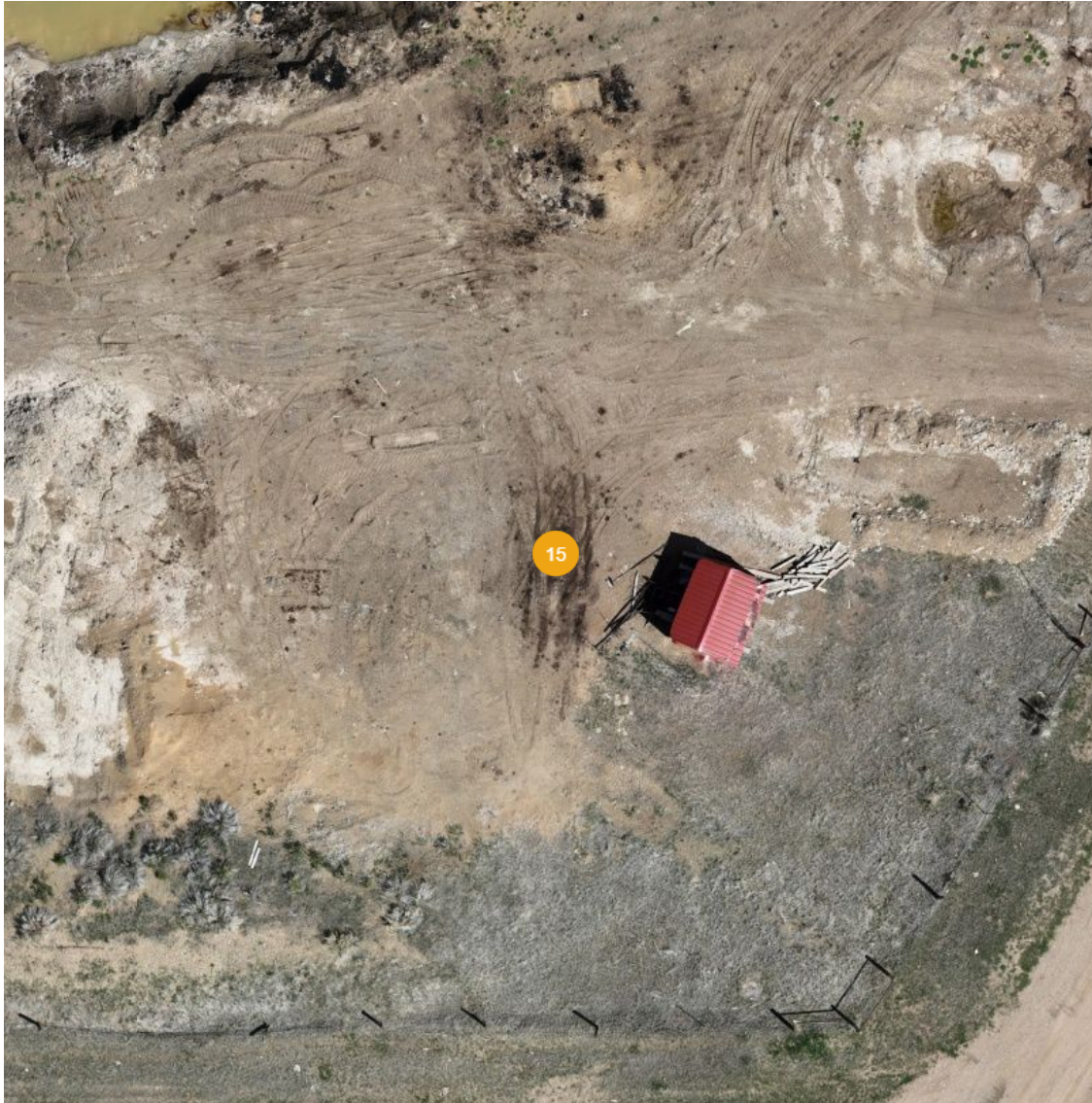
6376.29 US ft

NAD83(2011) / Colorado North (ftUS) (US survey foot)

15 - Observation

Open

May 1, 2025 at 11:34am



Details

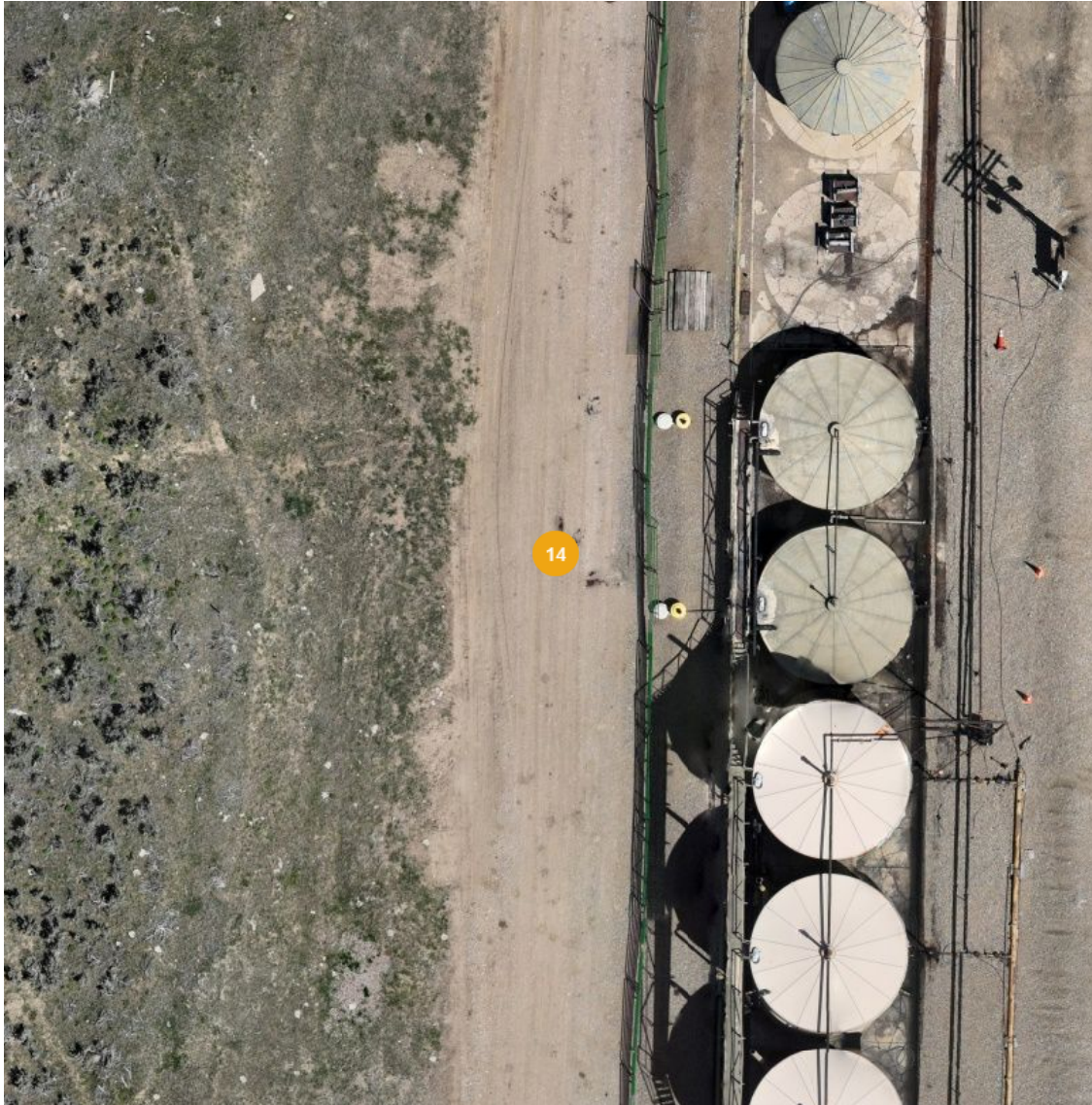
Summary:	Stained Soils / Impacted Materials / Spills observed throughout areas of the pit, including within the pit itself
Created:	May 2, 2025, 9:10am by Aaron Trujillo
Cost of Repair:	—
Lat/Long:	40.3072928, -107.6895008
Northing:	1362326.1 US ft
Easting:	2389429.5 US ft
Elevation:	6391.10 US ft

NAD83(2011) / Colorado North (ftUS) (US survey foot)

14 - Observation

Open

May 1, 2025 at 11:34am



Details

Summary:

Example of Spills / Stained soils observed throughout the Location and access road

Created:

May 2, 2025, 8:57am by Aaron Trujillo

Cost of Repair:

—

Lat/Long:

40.3066887, -107.6890875

Northing:

1362103.2 US ft

Easting:

2389539.3 US ft

Elevation:

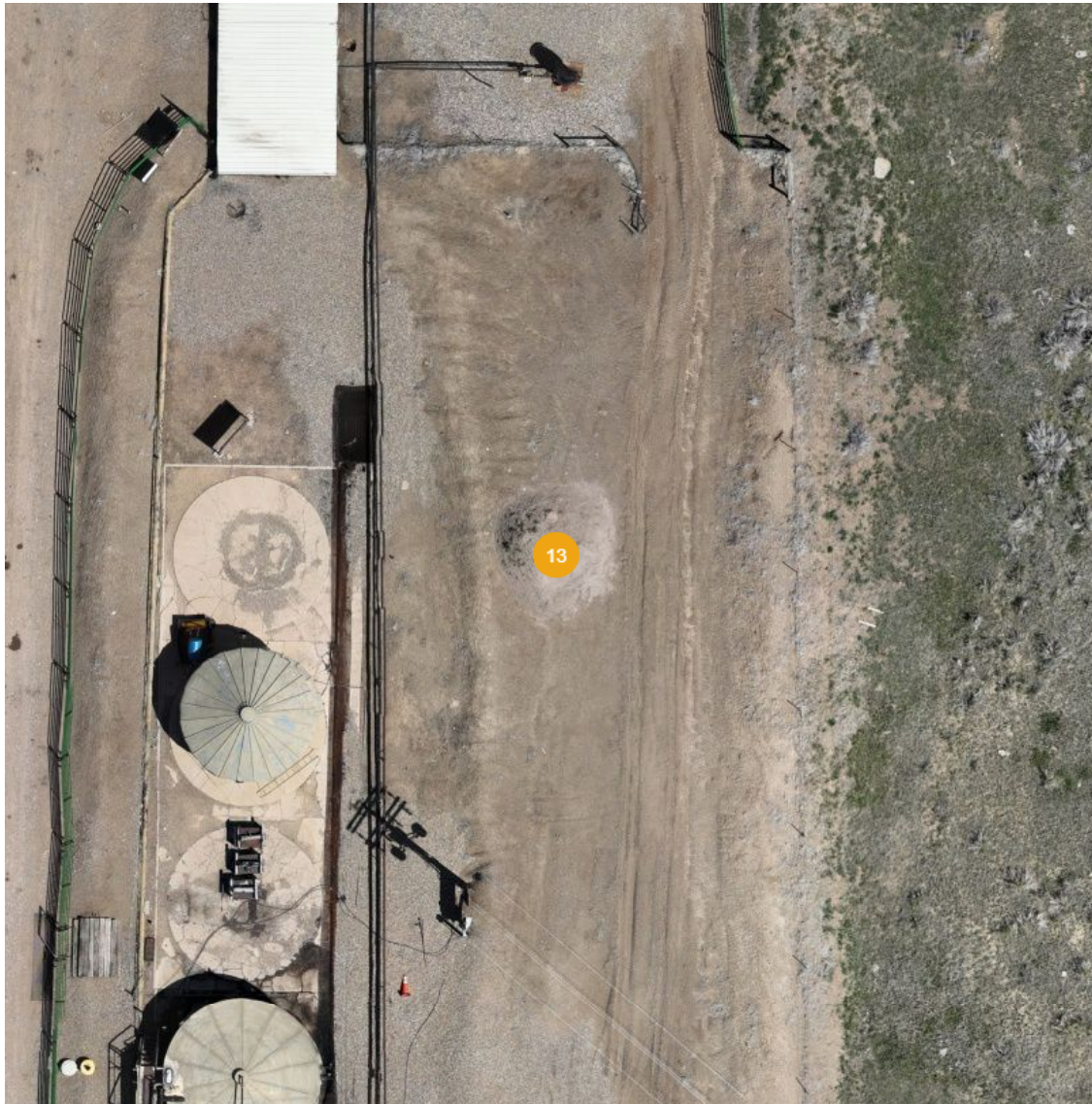
6397.98 US ft

NAD83(2011) / Colorado North (ftUS) (US survey foot)

13 - Observation

Open

May 1, 2025 at 11:34am



Details

Summary:	Unused stockpile material. BMPs pursuant to Rule 1002.c not observed.
Created:	May 2, 2025, 8:56am by Aaron Trujillo
Cost of Repair:	—
Lat/Long:	40.3069330, -107.6887923
Northing:	1362190.1 US ft
Easting:	2389623.8 US ft
Elevation:	6398.48 US ft

NAD83(2011) / Colorado North (ftUS) (US survey foot)

12 - Observation

Open

May 1, 2025 at 11:34am



Map data ©2025 Imagery ©2025 Airbus

Details

Summary:

Bare areas along the flowline pathway. Vegetation is not uniform.

Created:

May 2, 2025, 8:54am by Aaron Trujillo

Cost of Repair:

—

Lat/Long:

40.3058309, -107.6892286

Northing:

1361791.8 US ft

Easting:

2389492.3 US ft

Elevation:

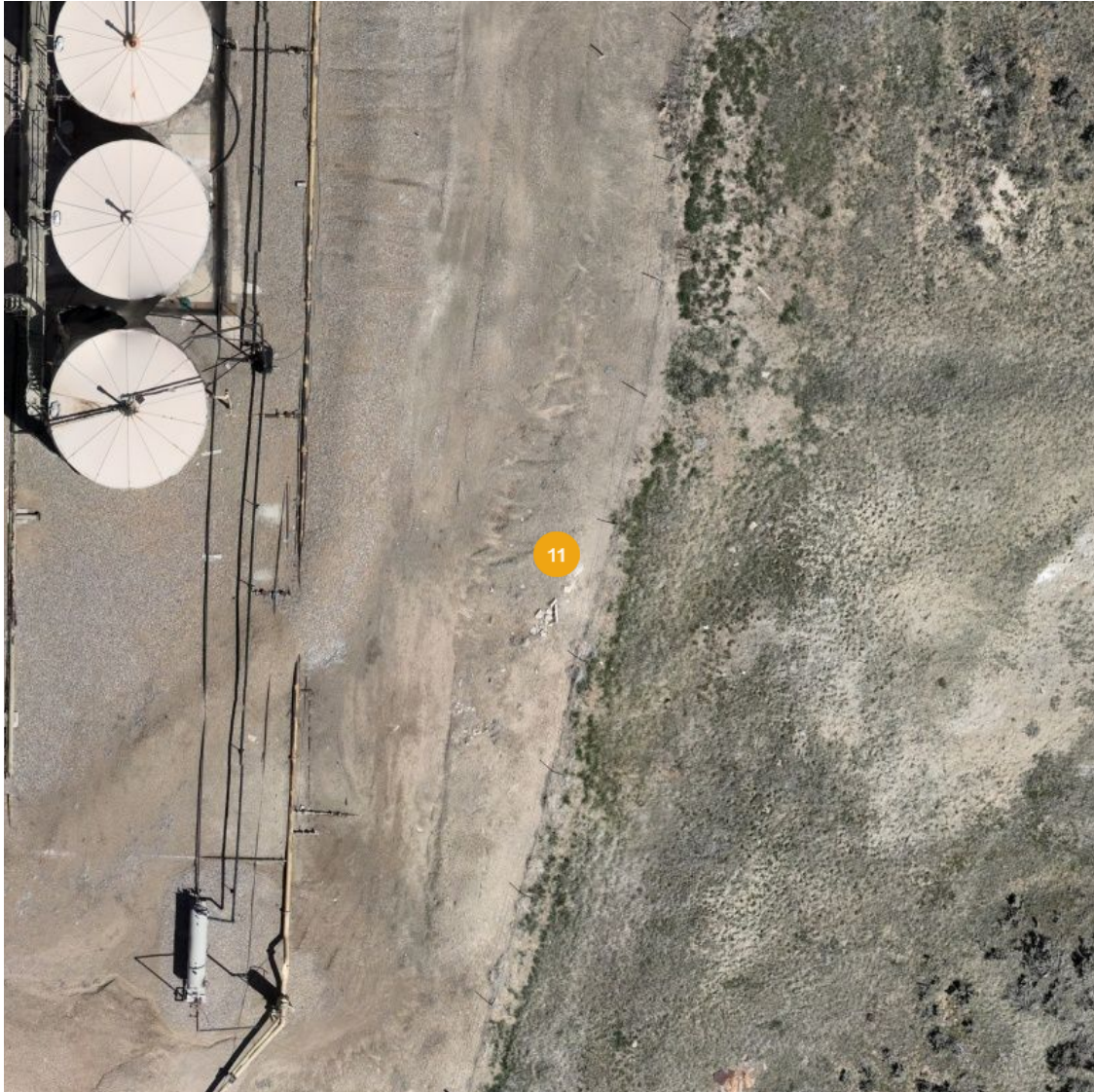
6401.53 US ft

NAD83(2011) / Colorado North (ftUS) (US survey foot)

11 - Observation

Open

May 1, 2025 at 11:34am



Details

Summary: Open, unused pipe riser. Pipe requires cover/cap to prevent wildlife access. Pipe requires removal pursuant to Rule 606.

Created: May 2, 2025, 8:53am by Aaron Trujillo

Cost of Repair: —

Lat/Long: 40.3062795, -107.6887447

Northing: 1361951.8 US ft

Easting: 2389631.2 US ft

Elevation: 6398.70 US ft

NAD83(2011) / Colorado North (ftUS) (US survey foot)

10 - Observation

Open

May 1, 2025 at 11:34am



Details

Summary:

Erosion degradation due to stormwater runoff

Created:

May 2, 2025, 8:51am by Aaron Trujillo

Cost of Repair:

—

Lat/Long:

40.3061188, -107.6890404

Northing:

1361895.3 US ft

Easting:

2389547.3 US ft

Elevation:

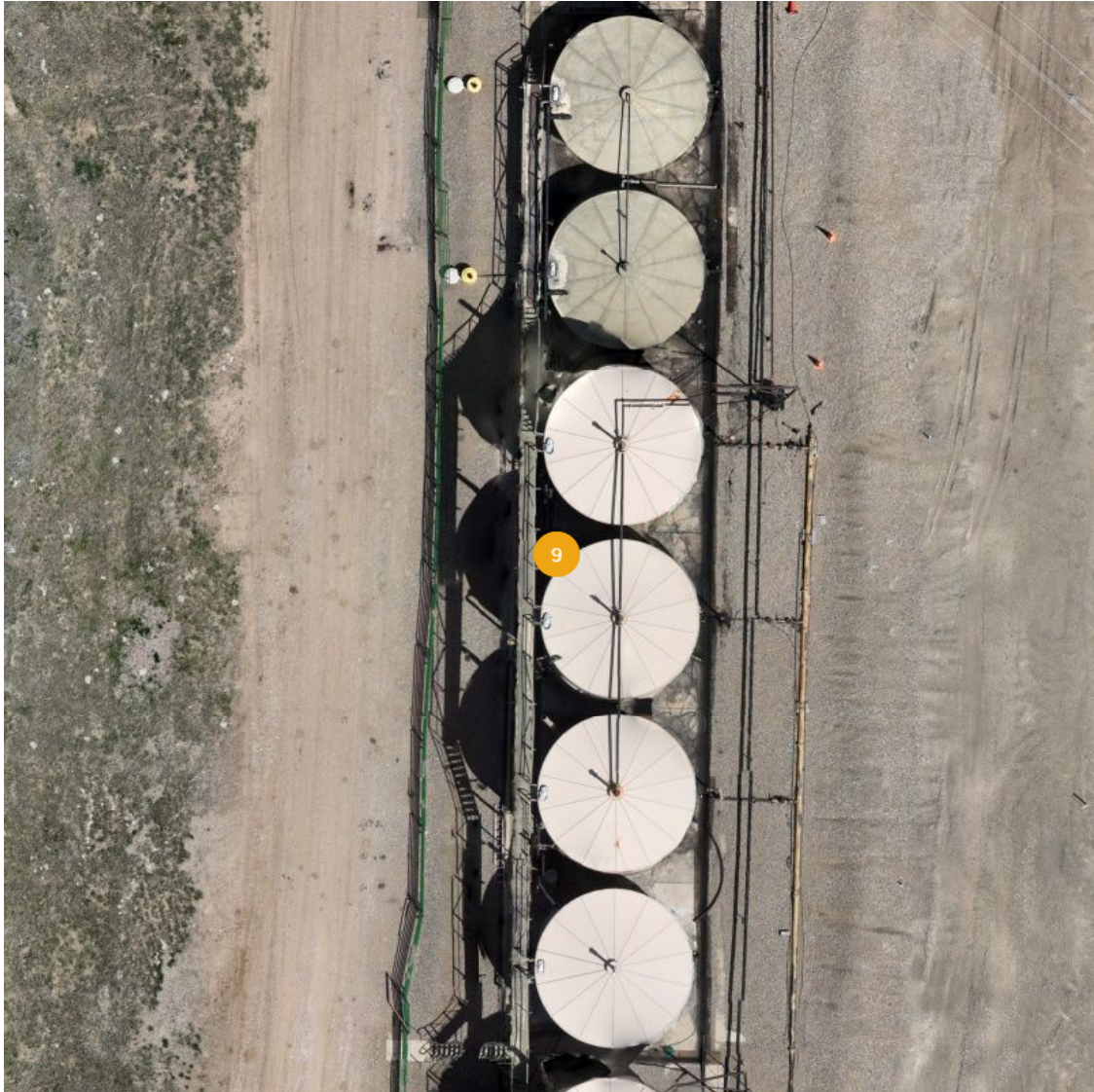
6399.27 US ft

NAD83(2011) / Colorado North (ftUS) (US survey foot)

9 - Observation

Open

May 1, 2025 at 11:34am



Details

Summary: All stacks, vents, or other openings will be equipped with screens or other appropriate equipment to prevent entry by wildlife, including birds and bats.

Created: May 2, 2025, 8:50am by Aaron Trujillo

Cost of Repair: —

Lat/Long: 40.3065623, -107.6889831

Northing: 1362056.5 US ft

Easting: 2389567.3 US ft

Elevation: 6421.68 US ft

NAD83(2011) / Colorado North (ftUS) (US survey foot)

**8 - Observation**

Open

May 1, 2025 at 11:34am



**Details**

Summary: VTC has not been installed per good engineering practice. Appropriately sized, course multi-angular aggregate material has not been used.

Created: May 2, 2025, 8:35am by Aaron Trujillo

Cost of Repair: —

Lat/Long: 40.3076618, -107.6890508

Northing: 1362457.4 US ft

Easting: 2389558.3 US ft

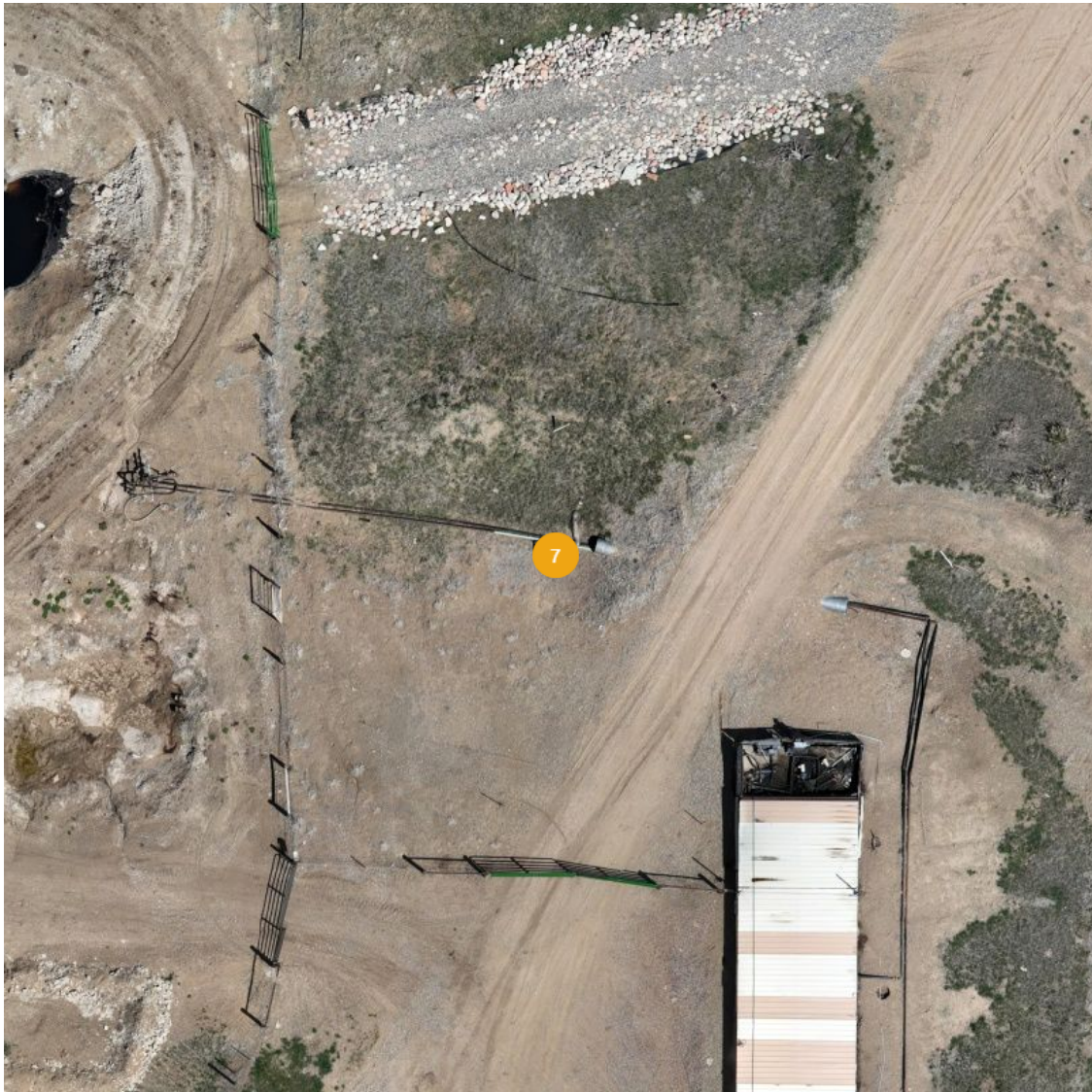
Elevation: 6387.29 US ft

NAD83(2011) / Colorado North (ftUS) (US survey foot)

7 - Observation

Open

May 1, 2025 at 11:34am



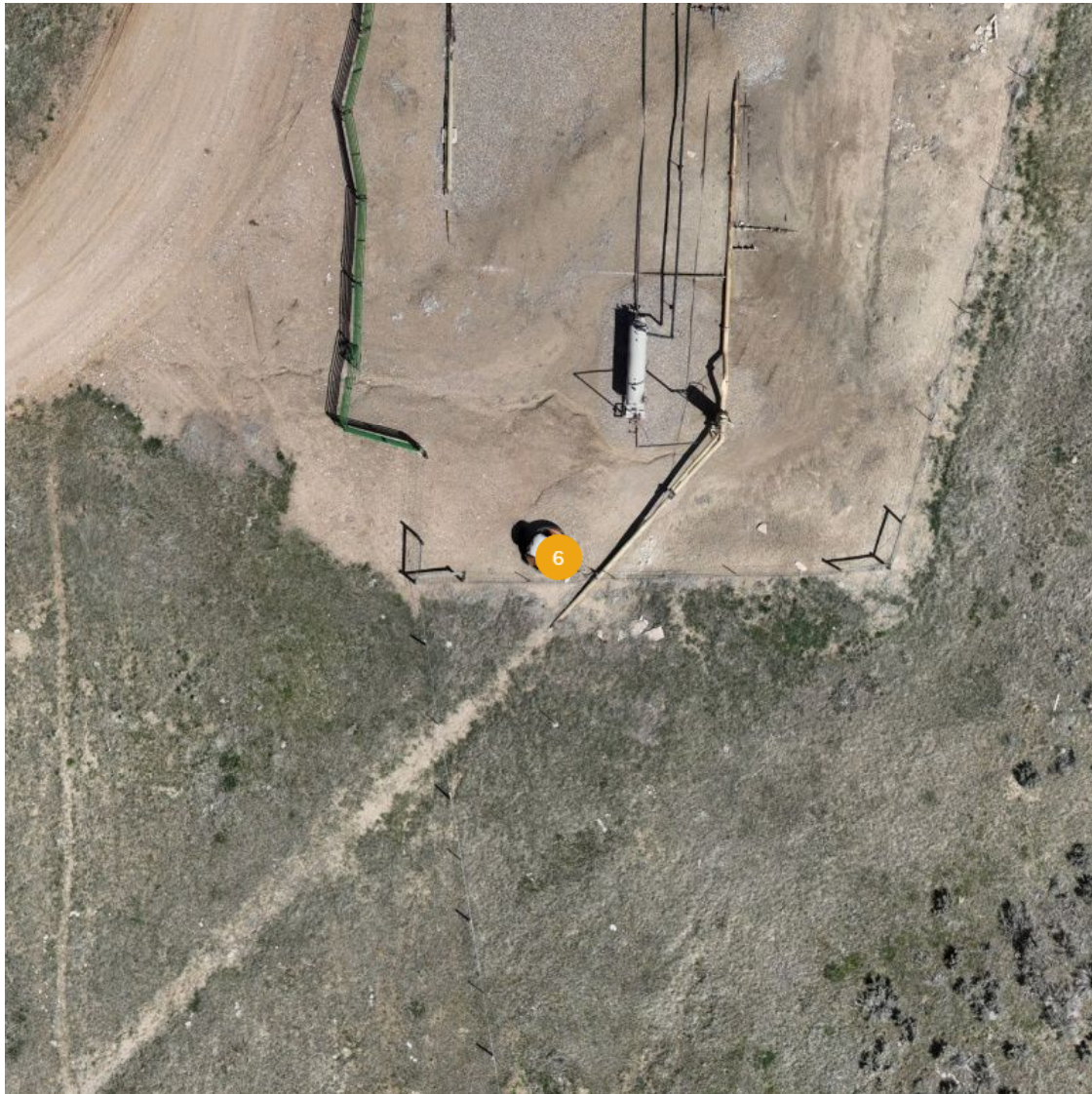
Details

Summary:	Unused erosion log.
Created:	May 2, 2025, 8:34am by Aaron Trujillo
Cost of Repair:	—
Lat/Long:	40.3074980, -107.6890462
Northing:	1362397.7 US ft
Easting:	2389558.1 US ft
Elevation:	6390.41 US ft
	NAD83(2011) / Colorado North (ftUS) (US survey foot)

6 - Observation

Open

May 1, 2025 at 11:34am



Details

Summary: Labels at container is no longer legible. Containers that are used to store, treat, or otherwise handle a hazardous material and which are required to be marked, placarded, or labeled in accordance with the U.S. Department of Transportation's Hazardous Materials Regulations, will retain the markings, placards, and labels on the Container. Such markings, placards, and labels will be retained on the Container until it is sufficiently cleaned of residue and purged of vapors to remove any potential hazards.

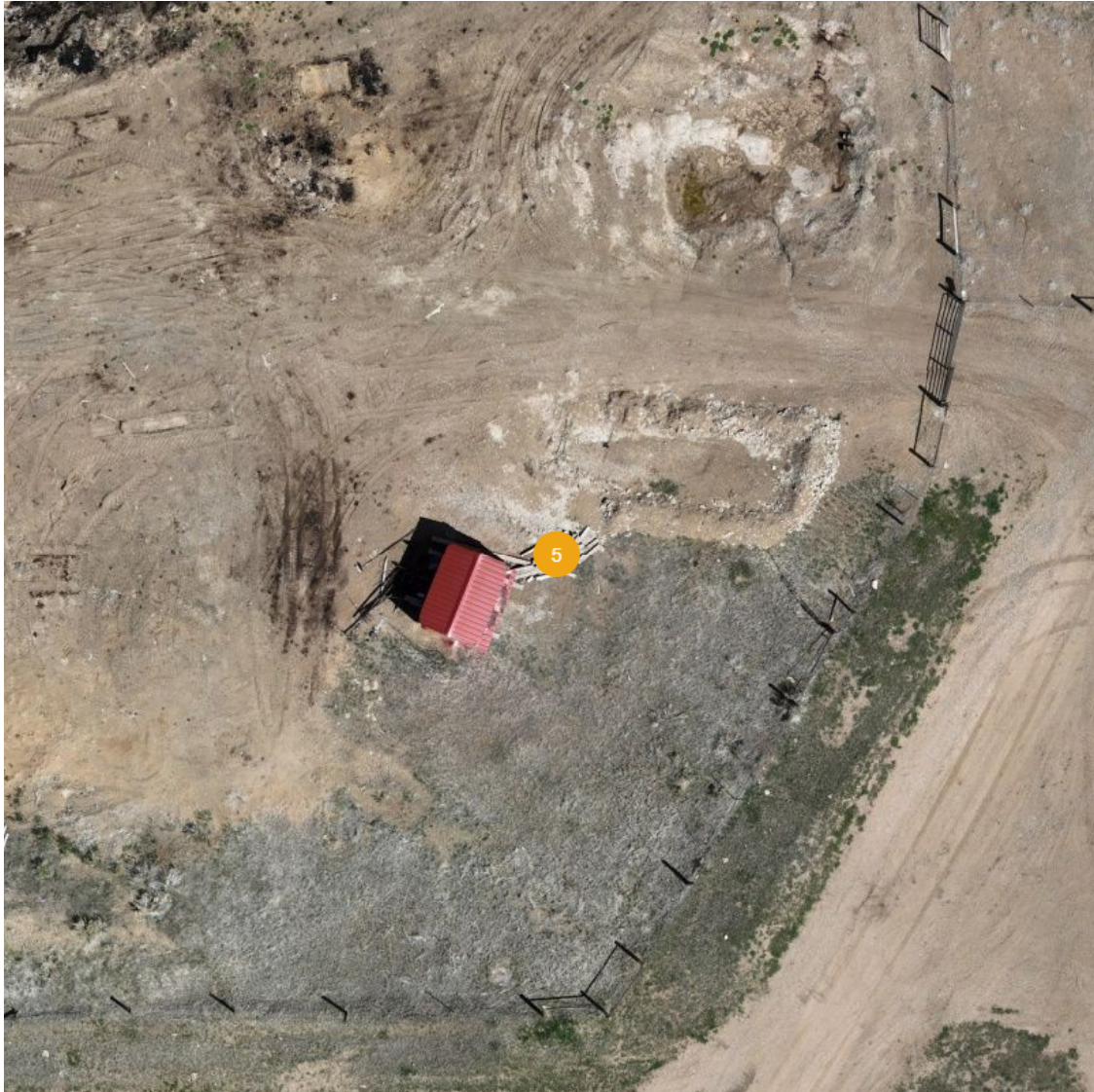
Created:	May 2, 2025, 8:33am by Aaron Trujillo
Cost of Repair:	—
Lat/Long:	40.3060591, -107.6889603
Northing:	1361873.0 US ft
Easting:	2389569.1 US ft
Elevation:	6404.10 US ft

NAD83(2011) / Colorado North (ftUS) (US survey foot)

5 - Observation

Open

May 1, 2025 at 11:34am



Details

Summary: The storage, placement, or maintenance of equipment, vehicles, trailers, commercial products, Chemicals, drums, totes, Containers, materials, and all other supplies not necessary for use on an Oil and Gas Locations is prohibited. Operators will properly dispose of all trash, rubbish, and other waste materials as nonhazardous/non-E&P solid waste, pursuant to Rule 906.c. All trash, rubbish, and other waste material will be properly contained until removed from the Oil and Gas Location. At no time will trash, debris, or rubbish be placed or remain on the ground.

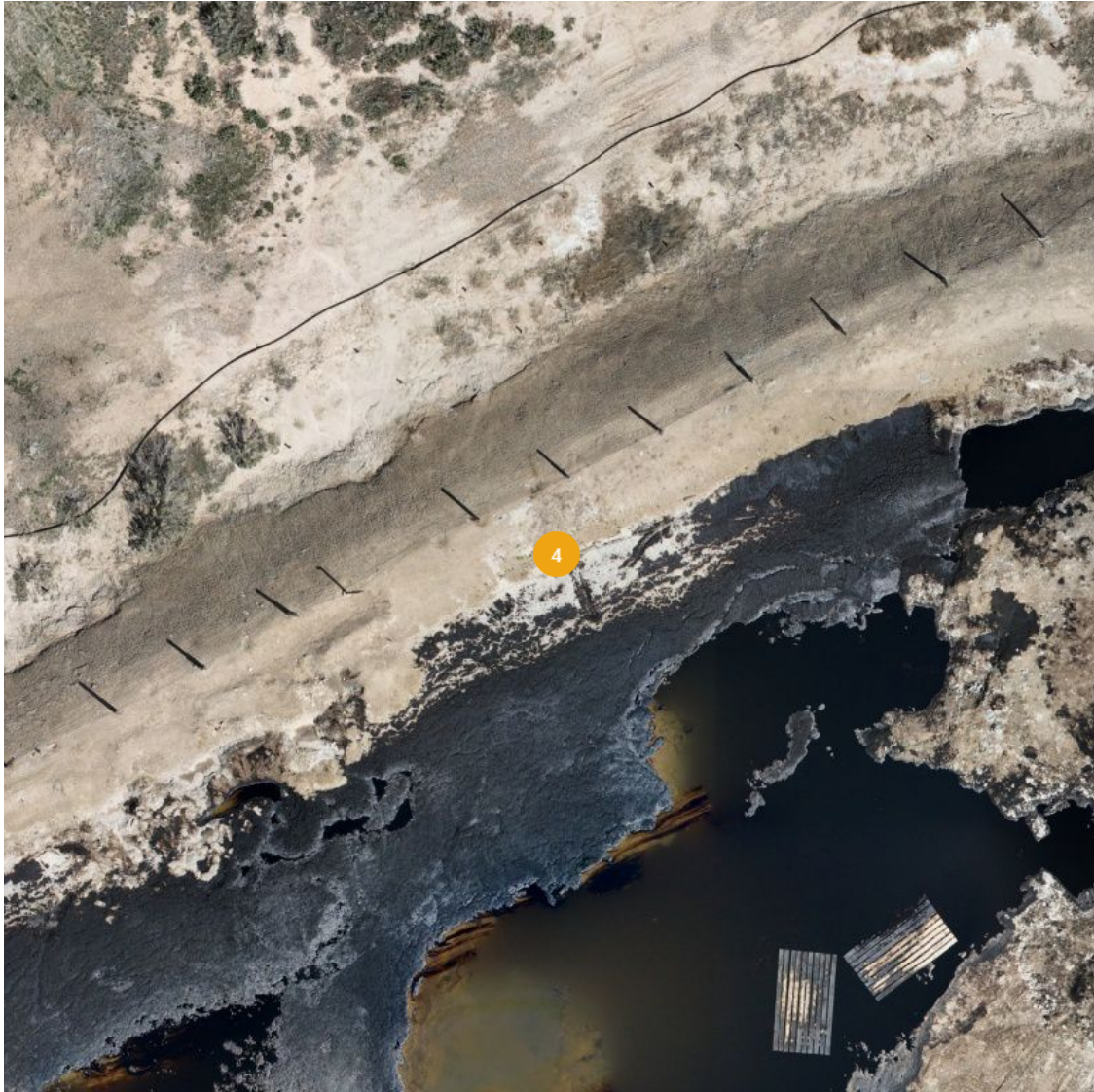
Created:	May 2, 2025, 8:30am by Aaron Trujillo
Cost of Repair:	—
Lat/Long:	40.3072866, -107.6893764
Northing:	1362322.9 US ft
Easting:	2389464.1 US ft
Elevation:	6392.24 US ft

NAD83(2011) / Colorado North (ftUS) (US survey foot)

### 4 - Observation

Open

May 1, 2025 at 11:34am



### Details

Summary:	Canada thistle establishment throughout perimeter areas of the pit.
Created:	May 2, 2025, 8:29am by Aaron Trujillo
Cost of Repair:	—
Lat/Long:	40.3079642, -107.6897313
Northing:	1362572.2 US ft
Easting:	2389371.3 US ft
Elevation:	6385.75 US ft

NAD83(2011) / Colorado North (ftUS) (US survey foot)

### 3 - Observation

Open

May 1, 2025 at 11:34am



### Details

Summary: Not capped pursuant to Rule 603.i. All loadlines will be bullplugged or capped. Spills within the honeypots. Fluids require removal and proper disposal pursuant to 912 requirements.

Created: May 2, 2025, 8:26am by Aaron Trujillo

Cost of Repair: —

Lat/Long: 40.3067355, -107.6890313

Northing: 1362119.9 US ft

Easting: 2389555.4 US ft

Elevation: 6398.66 US ft

NAD83(2011) / Colorado North (ftUS) (US survey foot)

## 2 - Observation

Open

May 1, 2025 at 11:34am



### Details

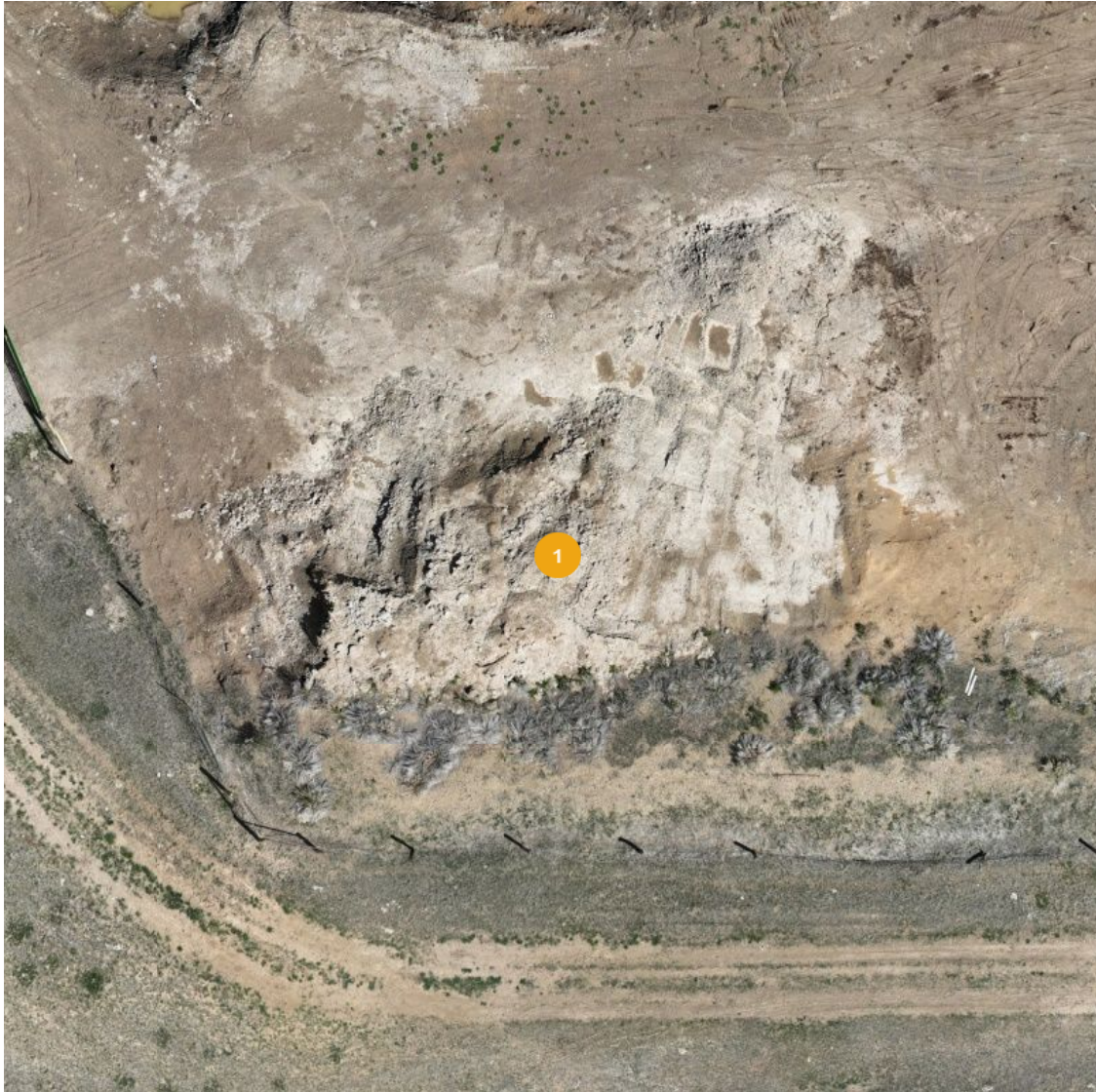
**Summary:** Stormwater runoff is leaving pit on the southeast end of the Location, travels north and discharges off-site at the gate on the east end of the Location. Impacted material evident within areas of the pit and along the pathway. BMPs to properly manage runoff and to prevent further spread of contaminants are inadequate.

Created:	May 2, 2025, 8:16am by Aaron Trujillo
Cost of Repair:	—
Lat/Long:	40.30754, -107.68924
Area:	1818.72 ft <sup>2</sup>
Surface area:	1938.57 ft <sup>2</sup>

1 - Observation

Open

May 1, 2025 at 11:34am



Details

Summary:	Lacks protection measures pursuant to Rule 1002.c. Stockpile appears to be being used as a "barrow" area.
Created:	May 2, 2025, 8:12am by Aaron Trujillo
Cost of Repair:	—
Lat/Long:	40.3072270, -107.6898534
Northing:	1362304.5 US ft
Easting:	2389330.6 US ft
Elevation:	6400.22 US ft

NAD83(2011) / Colorado North (ftUS) (US survey foot)