

Williams 23-18

NESW Sec. 18-T2N-R68W

API #: 123-21956

Facility ID: 466054

Remediation Project #: 37961

Form 19 Data Package

May 2025

Prepared by Tasman, Inc.



On behalf of Crestone Peak Resources Operating, LLC



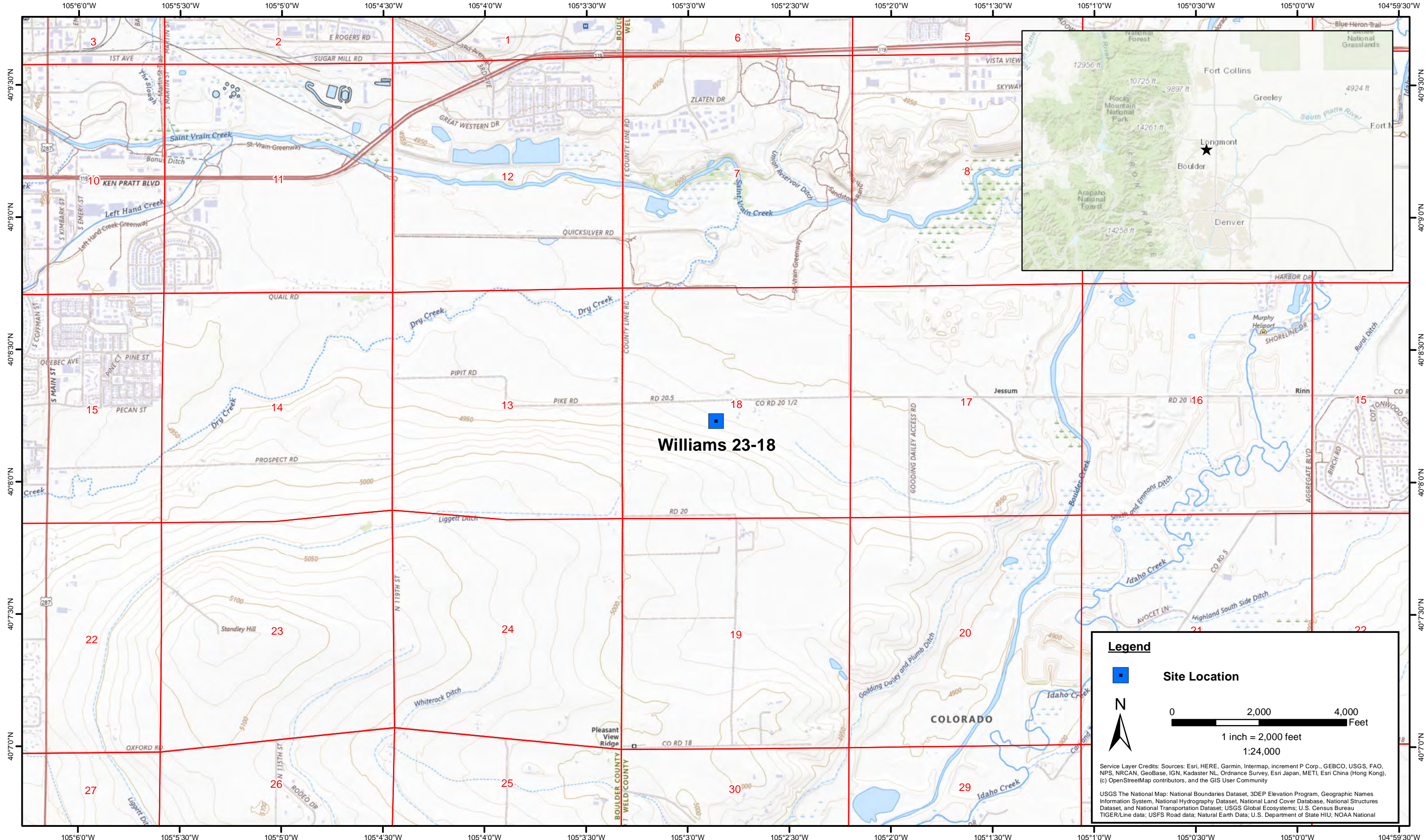
PHOTO LOG




Photographic Log


<p>Equipment ID: _____ Equipment Type: _____</p>			<p>Equipment ID: _____ Equipment Type: _____</p>		
<p>Material: _____</p>		<p>Volume: _____</p>	<p>Material: _____</p>		<p>Volume: _____</p>
<p>Contents: _____</p>			<p>Contents: _____</p>		
<p>Notes/Conditions: Soil sampling locations.</p>			<p>Notes/Conditions: Soil sampling location.</p>		

FIGURES



Legend

 **Site Location**

 **N**

0 2,000 4,000 Feet

1 inch = 2,000 feet
1:24,000

Service Layer Credits: Sources: Esri, HERE, Garmin, Intermap, increment P Corp., GEBCO, USGS, FAO, NPS, NRCAN, GeoBase, IGN, Kadaster NL, Ordnance Survey, Esri Japan, METI, Esri China (Hong Kong), (c) OpenStreetMap contributors, and the GIS User Community

USGS The National Map: National Boundaries Dataset, 3DEP Elevation Program, Geographic Names Information System, National Hydrography Dataset, National Land Cover Database, National Structures Dataset, and National Transportation Dataset; USGS Global Ecosystems; U.S. Census Bureau TIGER/Line data; USFS Road data; Natural Earth Data; U.S. Department of State HIU; NOAA National

DATE:	May 2025
DESIGNED BY:	S. Vogt
DRAWN BY:	J. Woffinden

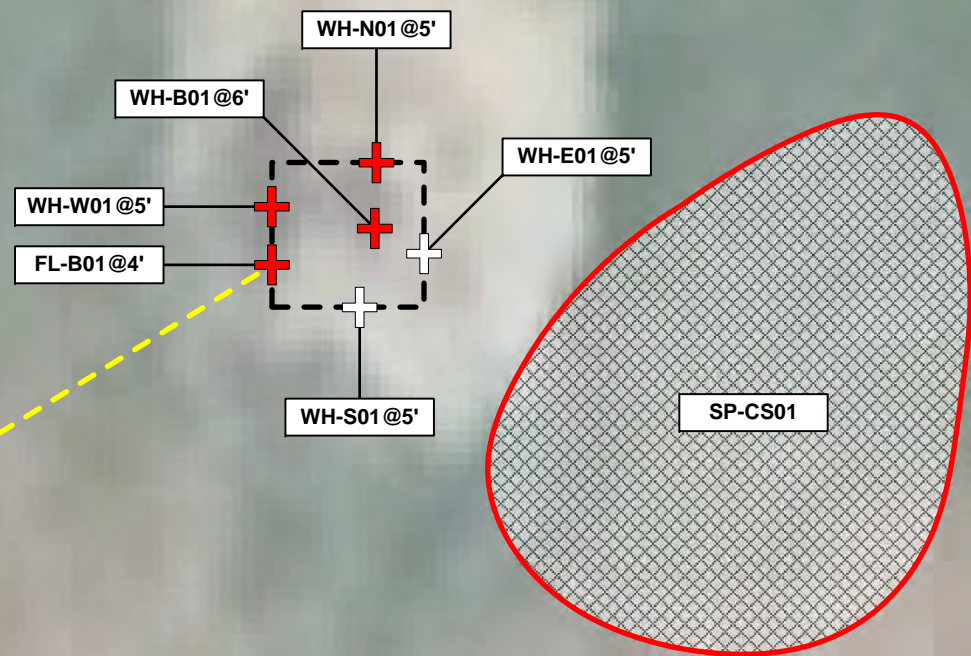


Tasman, Inc.
4725 Independence St.
Wheat Ridge, CO 80033






Crestone Peak Resources Operating, LLC
Williams 23-18
NESW Sec. 18-T2N-R68W
Weld County, Colorado

Site Location Map

Figure
1



Legend

-  Soil sample location – Submitted for Laboratory Analysis (Collected via Trimble GPS)
-  Soil sample location – Submitted for Laboratory Analysis – Elevated PID Readings, HC Staining, and/or HC Odor (Collected via Trimble GPS)
-  Excavation extent (Collected via Trimble GPS)
-  Stockpile location – Submitted for Laboratory Analysis – Elevated PID Readings, HC Staining, and/or HC Odor (Collected via Trimble GPS)
-  Flowline Location

Notes

Crestone Peak Resources Operating, LLC site infrastructure has been removed.

All locations are approximate unless otherwise noted.

GPS = Global Positioning System
 PID = Photoionization Detector
 HC = Hydrocarbon

0 ft. 10 ft. 20 ft.

Image Source: Google Earth



DATE:	May 14, 2025
DESIGNED BY:	S. Vogt
DRAWN BY:	A. Tullos

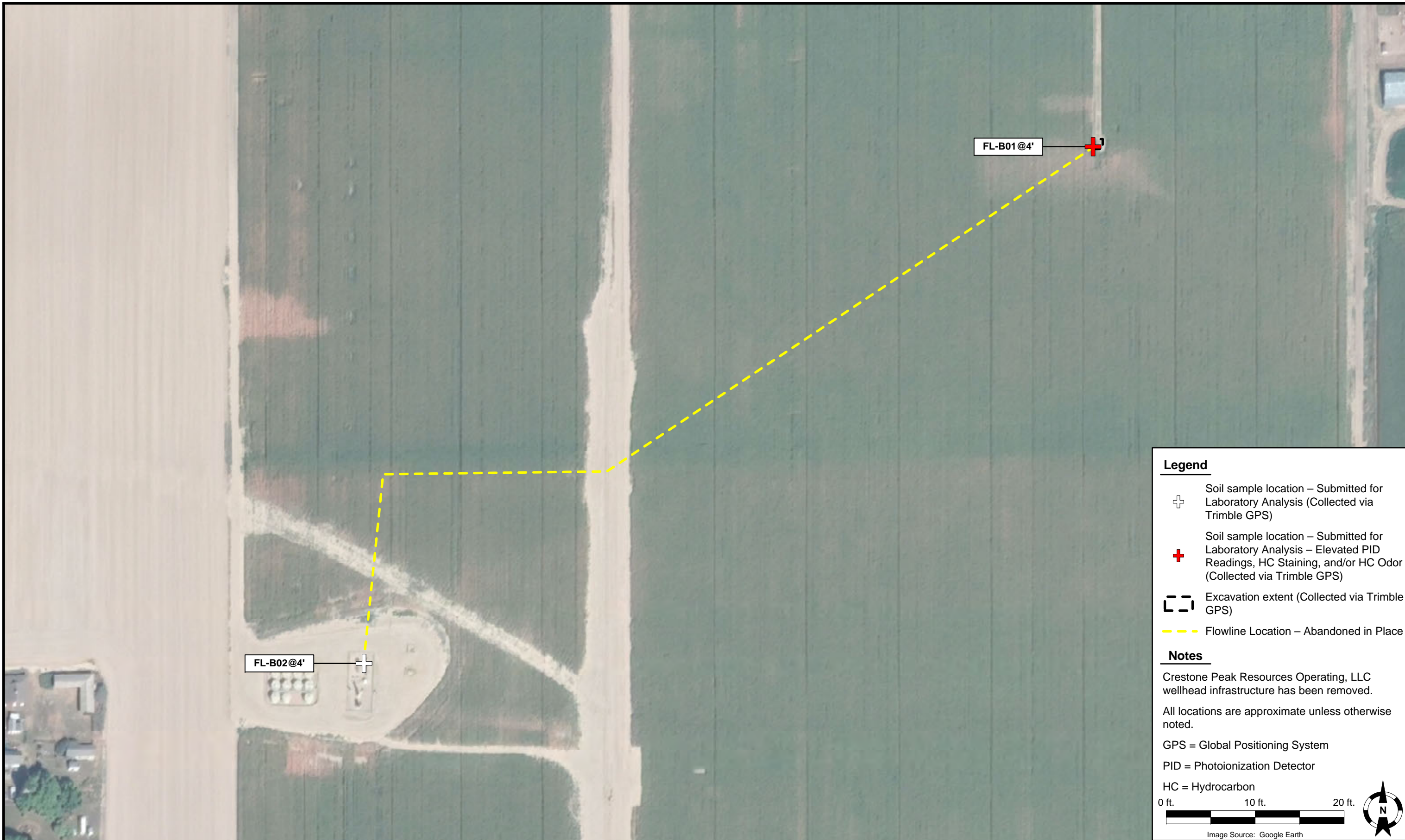


Tasman, Inc.
 4725 Independence St.
 Wheat Ridge, CO 80033

Crestone Peak Resources Operating, LLC
Williams 23-18
 NESW Sec. 18-T2N-R68W
 Weld County, Colorado

Wellhead Soil Sample
 Location Map
 (05/14/2025)

Figure
 2



Legend

- Soil sample location – Submitted for Laboratory Analysis (Collected via Trimble GPS)
- Soil sample location – Submitted for Laboratory Analysis – Elevated PID Readings, HC Staining, and/or HC Odor (Collected via Trimble GPS)
- Excavation extent (Collected via Trimble GPS)
- Flowline Location – Abandoned in Place

Notes

Crestone Peak Resources Operating, LLC wellhead infrastructure has been removed.

All locations are approximate unless otherwise noted.

GPS = Global Positioning System
 PID = Photoionization Detector
 HC = Hydrocarbon

0 ft. 10 ft. 20 ft.

Image Source: Google Earth

DATE:	May 14, 2025
DESIGNED BY:	S. Vogt
DRAWN BY:	A. Tullos



Tasman, Inc.
 4725 Independence St.
 Wheat Ridge, CO 80033

Crestone Peak Resources Operating, LLC
Williams 23-18
 NESW Sec. 18-T2N-R68W
 Weld County, Colorado

Flowline Soil Sample
 Location Map
 (05/14/2025)

Figure
 3