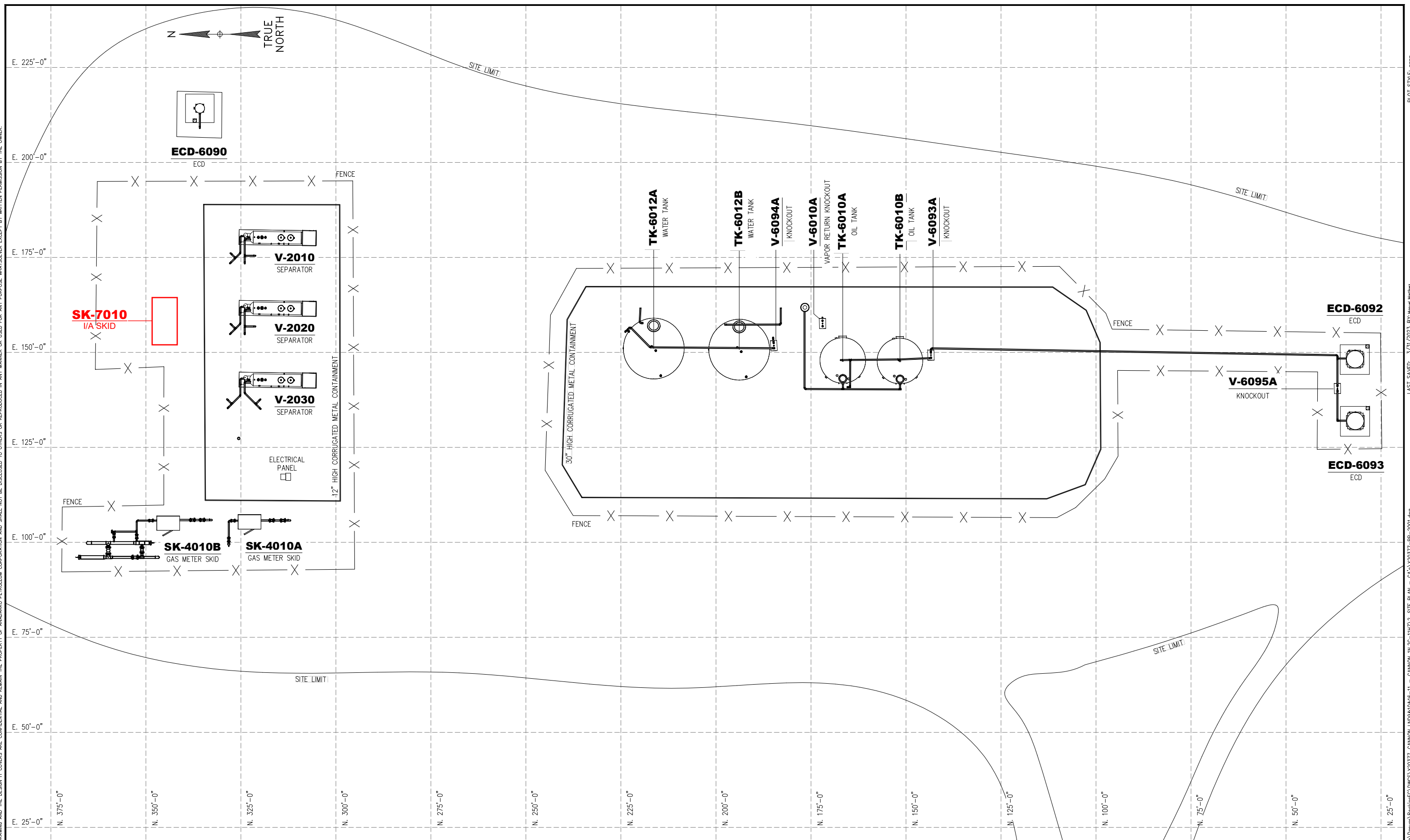


THIS DRAWING AND THE DESIGN IT COVERS ARE CONFIDENTIAL AND REMAIN THE PROPERTY OF ANADARKO PETROLEUM CORPORATION AND SHALL NOT BE DISCLOSED TO OTHERS OR REPRODUCED IN ANY MANNER OR USED FOR ANY PURPOSE WHATSOEVER EXCEPT BY WRITTEN PERMISSION BY THE OWNER.



NOTES:

DWG. NO.	TITLE

NO.	DESCRIPTION	BY	DATE	CHK.	DATE	APPR.	DATE

KERR-MCGEE OIL & GAS ONSHORE LP

CANNON LND9&10&16-11 - CANNON 1N,2C-11HZ

GENERAL ARRANGMENT		
DRAWN BY: D. PAYTON	CREATION DATE: 11/07/17	AFE No.:
APPROVED: M. PHILLIPS	APPR. DATE: 11/07/17	
	DWG. No.:	
	X20377-PP-2001	
SCALE: 3/32" = 1'-0"		
	SHEET No.:	
	1 OF 1	