

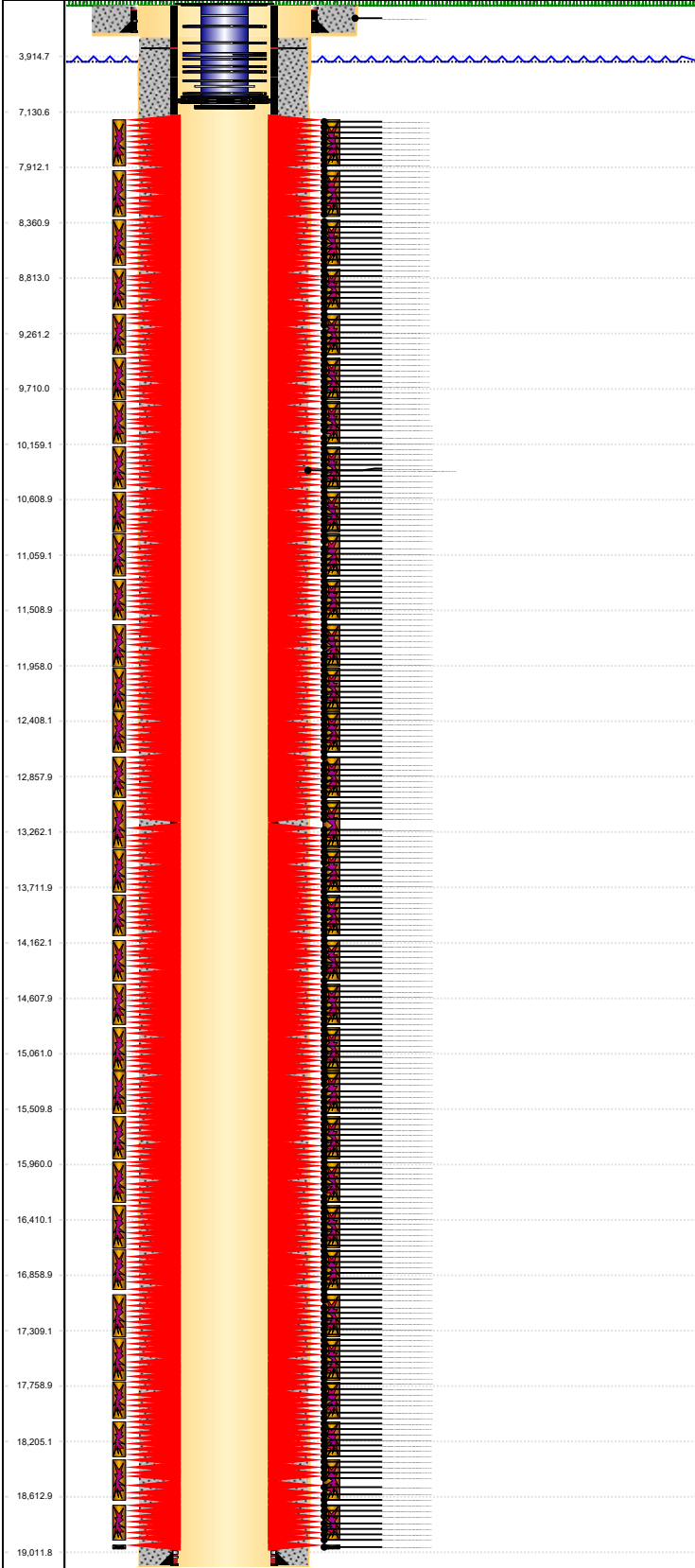


P&A Wellbore For State

Well Name: KODAK SOUTH 11C

Original Hole [Land]

MD (ftKB)
Vertical schematic (actual)



Well Header					
Surface UWI	Business Unit	Gov Auth Dist	Prod Tree Loc		
0512352104	Rockies	Evans	Land		
Orig. KB to Gnd (ft)	Original Spud Date	Abandon Date	Well Sub-Status	High...	
28.00	8/2/2023		WO	N	
Comment					

Surface Location (Congressional)									
Qtr 3	Qtr 4	Section	Twonshp	Twonsh...	Range	Rng E/...	Latitude (°)	Longitude (°)	
SE	SW	26	6	N	67	W	40.452427	-104.863665	

Wellbore Sections			
Section Des	Hole Size (in)	Top Depth (ftKB)	Btm Depth (ftKB)
Surface	13 1/2	14.0	
Surface	13 1/2	28.0	1,704.0
Production	8 1/2	1,704.0	19,052.0

Casing Strings						
Csg Des	Run Date	OD (in)	Wt/Len (lb/ft)	Grade	Top Depth (MD) (ftKB)	Set Depth (MD) (ftKB)
Surface	6/2/2023	9 5/8	36.00	J-55	28	1694.2
Production	8/6/2023	5 1/2	20.00	P-110	28	19041

Cement			
Des	Start Date	Top (ftKB)	Btm (ftKB)
Surface	6/2/2023	28.0	1,694.2
Production Casing Cement	8/7/2023	1,736.0	19,041.0

Zone Statuses					
Zone Name	Status Date	Status	Fluid Type	Job	Prod Method

Perforation Data					
Linked Zone	Explosive Type	Entered Shot Total	Top (ftKB)	Btm (ftKB)	Date
Codell, Original Hole		4	7,554.0	7,556.0	4/19/2024
Codell, Original Hole		4	7,598.0	7,600.0	4/19/2024
Codell, Original Hole		4	7,642.0	7,644.0	4/19/2024
Codell, Original Hole		4	7,685.0	7,687.0	4/19/2024
Codell, Original Hole		4	7,730.0	7,732.0	4/19/2024
Codell, Original Hole		4	7,775.0	7,777.0	4/19/2024
Codell, Original Hole		4	7,820.0	7,822.0	4/19/2024
Codell, Original Hole		4	7,865.0	7,867.0	4/19/2024
Codell, Original Hole		4	7,910.0	7,912.0	4/19/2024
Codell, Original Hole		4	7,955.0	7,957.0	4/19/2024
Codell, Original Hole		4	8,000.0	8,002.0	4/19/2024
Codell, Original Hole		4	8,045.0	8,047.0	4/19/2024
Codell, Original Hole		4	8,090.0	8,092.0	4/19/2024
Codell, Original Hole		4	8,135.0	8,137.0	4/19/2024
Codell, Original Hole		4	8,179.0	8,181.0	4/19/2024
Codell, Original Hole		4	8,224.0	8,226.0	4/19/2024
Codell, Original Hole		4	8,269.0	8,271.0	4/19/2024
Codell, Original Hole		4	8,314.0	8,316.0	4/19/2024
Codell, Original Hole		4	8,359.0	8,361.0	4/19/2024
Codell, Original Hole		4	8,404.0	8,406.0	4/19/2024
Codell, Original Hole		4	8,449.0	8,451.0	4/19/2024
Codell, Original Hole		4	8,494.0	8,496.0	4/19/2024
Codell, Original Hole		4	8,539.0	8,541.0	4/19/2024
Codell, Original Hole		4	8,584.0	8,586.0	4/19/2024
Codell, Original Hole		4	8,629.0	8,631.0	4/19/2024
Codell, Original Hole		4	8,674.0	8,676.0	4/19/2024
Codell, Original Hole		4	8,719.0	8,721.0	4/19/2024
Codell, Original Hole		4	8,760.0	8,762.0	4/18/2024
Codell, Original Hole		4	8,811.0	8,813.0	4/18/2024
Codell, Original Hole		4	8,856.0	8,858.0	4/18/2024
Codell, Original Hole		4	8,900.0	8,902.0	4/18/2024
Codell, Original Hole		4	8,944.0	8,946.0	4/18/2024
Codell, Original Hole		4	8,989.0	8,991.0	4/18/2024
Codell, Original Hole		4	9,034.0	9,036.0	4/18/2024
Codell, Original Hole		4	9,079.0	9,081.0	4/18/2024
Codell, Original Hole		4	9,124.0	9,126.0	4/18/2024
Codell, Original Hole		4	9,169.0	9,171.0	4/18/2024



P&A Wellbore For State

Well Name: KODAK SOUTH 11C

Original Hole [Land]		Perforation Data					
MD (ftKB)	Vertical schematic (actual)	Linked Zone	Explosive Type	Entered Shot Total	Top (ftKB)	Btm (ftKB)	Date
3,914.7		Codell, Original Hole		4	9,214.0	9,216.0	4/18/2024
7,130.6		Codell, Original Hole		4	9,259.0	9,261.0	4/18/2024
7,912.1		Codell, Original Hole		4	9,304.0	9,306.0	4/18/2024
8,360.9		Codell, Original Hole		4	9,349.0	9,351.0	4/18/2024
8,813.0		Codell, Original Hole		4	9,393.0	9,395.0	4/18/2024
9,261.2		Codell, Original Hole		4	9,438.0	9,440.0	4/18/2024
9,710.0		Codell, Original Hole		4	9,483.0	9,485.0	4/18/2024
10,159.1		Codell, Original Hole		4	9,528.0	9,530.0	4/18/2024
10,608.9		Codell, Original Hole		4	9,573.0	9,575.0	4/18/2024
11,059.1		Codell, Original Hole		4	9,618.0	9,620.0	4/18/2024
11,508.9		Codell, Original Hole		4	9,663.0	9,665.0	4/18/2024
11,958.0		Codell, Original Hole		4	9,708.0	9,710.0	4/18/2024
12,408.1		Codell, Original Hole		4	9,753.0	9,755.0	4/18/2024
12,857.9		Codell, Original Hole		4	9,798.0	9,800.0	4/18/2024
13,262.1		Codell, Original Hole		4	9,843.0	9,845.0	4/18/2024
13,711.9		Codell, Original Hole		4	9,888.0	9,890.0	4/18/2024
14,162.1		Codell, Original Hole		4	9,933.0	9,935.0	4/18/2024
14,607.9		Codell, Original Hole		4	9,978.0	9,980.0	4/18/2024
15,061.0		Codell, Original Hole		4	10,023.0	10,025.0	4/18/2024
15,509.8		Codell, Original Hole		4	10,068.0	10,070.0	4/18/2024
15,960.0		Codell, Original Hole		4	10,113.0	10,115.0	4/18/2024
16,410.1		Codell, Original Hole		4	10,157.0	10,159.0	4/18/2024
16,858.9		Codell, Original Hole		4	10,202.0	10,204.0	4/18/2024
17,309.1		Codell, Original Hole		4	10,246.0	10,248.0	4/18/2024
17,758.9		Codell, Original Hole		4	10,290.0	10,292.0	4/18/2024
18,205.1		Codell, Original Hole		4	10,339.0	10,341.0	4/18/2024
18,612.9		Codell, Original Hole		4	10,382.0	10,384.0	4/18/2024
19,011.8		Codell, Original Hole		4	10,429.0	10,431.0	4/18/2024
		Codell, Original Hole		4	10,473.0	10,475.0	4/18/2024
		Codell, Original Hole		4	10,518.0	10,520.0	4/18/2024
		Codell, Original Hole		4	10,562.0	10,564.0	4/17/2024
		Codell, Original Hole		4	10,607.0	10,609.0	4/17/2024
		Codell, Original Hole		4	10,652.0	10,654.0	4/17/2024
		Codell, Original Hole		4	10,697.0	10,699.0	4/17/2024
		Codell, Original Hole		4	10,742.0	10,744.0	4/17/2024
		Codell, Original Hole		4	10,787.0	10,789.0	4/17/2024
		Codell, Original Hole		4	10,832.0	10,834.0	4/17/2024
		Codell, Original Hole		4	10,877.0	10,879.0	4/17/2024
		Codell, Original Hole		4	10,922.0	10,924.0	4/17/2024
		Codell, Original Hole		4	10,967.0	10,969.0	4/17/2024
	Codell, Original Hole		4	11,012.0	11,014.0	4/17/2024	
	Codell, Original Hole		4	11,057.0	11,059.0	4/17/2024	
	Codell, Original Hole		4	11,102.0	11,104.0	4/17/2024	
	Codell, Original Hole		4	11,147.0	11,149.0	4/17/2024	
	Codell, Original Hole		4	11,192.0	11,194.0	4/17/2024	
	Codell, Original Hole		4	11,237.0	11,239.0	4/17/2024	
	Codell, Original Hole		4	11,282.0	11,284.0	4/17/2024	
	Codell, Original Hole		4	11,327.0	11,329.0	4/17/2024	
	Codell, Original Hole		4	11,372.0	11,374.0	4/17/2024	
	Codell, Original Hole		4	11,417.0	11,419.0	4/17/2024	
	Codell, Original Hole		4	11,462.0	11,464.0	4/17/2024	
	Codell, Original Hole		4	11,507.0	11,509.0	4/17/2024	
	Codell, Original Hole		4	11,552.0	11,554.0	4/17/2024	
	Codell, Original Hole		4	11,597.0	11,599.0	4/17/2024	
	Codell, Original Hole		4	11,642.0	11,644.0	4/17/2024	
	Codell, Original Hole		4	11,687.0	11,689.0	4/17/2024	
	Codell, Original Hole		4	11,732.0	11,734.0	4/17/2024	
	Codell, Original Hole		4	11,776.0	11,778.0	4/17/2024	
	Codell, Original Hole		4	11,822.0	11,824.0	4/17/2024	
	Codell, Original Hole		4	11,866.0	11,868.0	4/17/2024	



P&A Wellbore For State

Well Name: KODAK SOUTH 11C

Original Hole [Land]		Perforation Data					
MD (ftKB)	Vertical schematic (actual)	Linked Zone	Explosive Type	Entered Shot Total	Top (ftKB)	Btm (ftKB)	Date
		Codell, Original Hole		4	11,911.0	11,913.0	4/17/2024
		Codell, Original Hole		4	11,956.0	11,958.0	4/17/2024
		Codell, Original Hole		4	12,003.0	12,005.0	4/17/2024
		Codell, Original Hole		4	12,046.0	12,048.0	4/17/2024
		Codell, Original Hole		4	12,091.0	12,093.0	4/17/2024
		Codell, Original Hole		4	12,136.0	12,138.0	4/17/2024
		Codell, Original Hole		4	12,181.0	12,183.0	4/17/2024
		Codell, Original Hole		4	12,226.0	12,228.0	4/17/2024
		Codell, Original Hole		4	12,271.0	12,273.0	4/17/2024
		Codell, Original Hole		4	12,316.0	12,318.0	4/17/2024
		Codell, Original Hole		4	12,361.0	12,363.0	4/16/2024
		Codell, Original Hole		4	12,406.0	12,408.0	4/16/2024
		Codell, Original Hole		4	12,451.0	12,453.0	4/16/2024
		Codell, Original Hole		4	12,496.0	12,498.0	4/16/2024
		Codell, Original Hole		4	12,541.0	12,543.0	4/16/2024
		Codell, Original Hole		4	12,586.0	12,588.0	4/16/2024
		Codell, Original Hole		4	12,631.0	12,633.0	4/16/2024
		Codell, Original Hole		4	12,676.0	12,678.0	4/16/2024
		Codell, Original Hole		4	12,721.0	12,723.0	4/16/2024
		Codell, Original Hole		4	12,766.0	12,768.0	4/16/2024
		Codell, Original Hole		4	12,811.0	12,813.0	4/16/2024
		Codell, Original Hole		4	12,856.0	12,858.0	4/16/2024
		Codell, Original Hole		4	12,901.0	12,903.0	4/16/2024
		Codell, Original Hole		4	12,946.0	12,948.0	4/16/2024
		Codell, Original Hole		4	12,990.0	12,992.0	4/16/2024
		Codell, Original Hole		4	13,035.0	13,037.0	4/16/2024
		Codell, Original Hole		4	13,080.0	13,082.0	4/16/2024
		Codell, Original Hole		4	13,125.0	13,127.0	4/16/2024
		Codell, Original Hole		4	13,170.0	13,172.0	4/16/2024
		Codell, Original Hole		4	13,215.0	13,217.0	4/16/2024
		Codell, Original Hole		4	13,260.0	13,262.0	4/16/2024
		Codell, Original Hole		4	13,305.0	13,307.0	4/16/2024
		Codell, Original Hole		4	13,350.0	13,352.0	4/16/2024
		Codell, Original Hole		4	13,395.0	13,397.0	4/16/2024
		Codell, Original Hole		4	13,440.0	13,442.0	4/16/2024
		Codell, Original Hole		4	13,485.0	13,487.0	4/16/2024
		Codell, Original Hole		4	13,530.0	13,532.0	4/16/2024
		Codell, Original Hole		4	13,575.0	13,577.0	4/16/2024
		Codell, Original Hole		4	13,620.0	13,622.0	4/16/2024
		Codell, Original Hole		4	13,665.0	13,667.0	4/16/2024
		Codell, Original Hole		4	13,710.0	13,712.0	4/16/2024
		Codell, Original Hole		4	13,755.0	13,757.0	4/16/2024
		Codell, Original Hole		4	13,800.0	13,802.0	4/15/2024
		Codell, Original Hole		4	13,845.0	13,847.0	4/15/2024
		Codell, Original Hole		4	13,890.0	13,892.0	4/15/2024
		Codell, Original Hole		4	13,935.0	13,937.0	4/15/2024
		Codell, Original Hole		4	13,980.0	13,982.0	4/15/2024
		Codell, Original Hole		4	14,025.0	14,027.0	4/15/2024
		Codell, Original Hole		4	14,070.0	14,072.0	4/15/2024
		Codell, Original Hole		4	14,115.0	14,117.0	4/15/2024
		Codell, Original Hole		4	14,160.0	14,162.0	4/15/2024
		Codell, Original Hole		4	14,204.0	14,206.0	4/15/2024
		Codell, Original Hole		4	14,249.0	14,251.0	4/15/2024
		Codell, Original Hole		4	14,294.0	14,296.0	4/15/2024
		Codell, Original Hole		4	14,339.0	14,341.0	4/15/2024
		Codell, Original Hole		4	14,384.0	14,386.0	4/15/2024
		Codell, Original Hole		4	14,429.0	14,431.0	4/15/2024
		Codell, Original Hole		4	14,474.0	14,476.0	4/15/2024
		Codell, Original Hole		4	14,517.0	14,519.0	4/15/2024
		Codell, Original Hole		4	14,562.0	14,564.0	4/15/2024



P&A Wellbore For State

Well Name: KODAK SOUTH 11C

Original Hole [Land]		Perforation Data					
MD (ftKB)	Vertical schematic (actual)	Linked Zone	Explosive Type	Entered Shot Total	Top (ftKB)	Btm (ftKB)	Date
		Codell, Original Hole		4	14,606.0	14,608.0	4/15/2024
		Codell, Original Hole		4	14,658.0	14,660.0	4/15/2024
		Codell, Original Hole		4	14,702.0	14,704.0	4/15/2024
		Codell, Original Hole		4	14,746.0	14,748.0	4/15/2024
		Codell, Original Hole		4	14,790.0	14,792.0	4/15/2024
		Codell, Original Hole		4	14,835.0	14,837.0	4/15/2024
		Codell, Original Hole		4	14,879.0	14,881.0	4/15/2024
		Codell, Original Hole		4	14,924.0	14,926.0	4/15/2024
		Codell, Original Hole		4	14,969.0	14,971.0	4/15/2024
		Codell, Original Hole		4	15,014.0	15,016.0	4/15/2024
		Codell, Original Hole		4	15,059.0	15,061.0	4/15/2024
		Codell, Original Hole		4	15,104.0	15,106.0	4/15/2024
		Codell, Original Hole		4	15,149.0	15,151.0	4/15/2024
		Codell, Original Hole		4	15,194.0	15,196.0	4/15/2024
		Codell, Original Hole		4	15,239.0	15,241.0	4/14/2024
		Codell, Original Hole		4	15,284.0	15,286.0	4/14/2024
		Codell, Original Hole		4	15,329.0	15,331.0	4/14/2024
		Codell, Original Hole		4	15,374.0	15,376.0	4/14/2024
		Codell, Original Hole		4	15,418.0	15,420.0	4/14/2024
		Codell, Original Hole		4	15,463.0	15,465.0	4/14/2024
		Codell, Original Hole		4	15,508.0	15,510.0	4/14/2024
		Codell, Original Hole		4	15,553.0	15,555.0	4/14/2024
		Codell, Original Hole		4	15,598.0	15,600.0	4/14/2024
		Codell, Original Hole		4	15,643.0	15,645.0	4/14/2024
		Codell, Original Hole		4	15,688.0	15,690.0	4/14/2024
		Codell, Original Hole		4	15,733.0	15,735.0	4/14/2024
		Codell, Original Hole		4	15,778.0	15,780.0	4/14/2024
		Codell, Original Hole		4	15,823.0	15,825.0	4/14/2024
		Codell, Original Hole		4	15,868.0	15,870.0	4/14/2024
		Codell, Original Hole		4	15,913.0	15,915.0	4/14/2024
		Codell, Original Hole		4	15,958.0	15,960.0	4/14/2024
		Codell, Original Hole		4	16,003.0	16,005.0	4/14/2024
		Codell, Original Hole		4	16,048.0	16,050.0	4/14/2024
		Codell, Original Hole		4	16,092.0	16,094.0	4/14/2024
		Codell, Original Hole		4	16,136.0	16,138.0	4/14/2024
		Codell, Original Hole		4	16,180.0	16,182.0	4/14/2024
		Codell, Original Hole		4	16,224.0	16,226.0	4/14/2024
		Codell, Original Hole		4	16,275.0	16,277.0	4/14/2024
		Codell, Original Hole		4	16,320.0	16,322.0	4/13/2024
		Codell, Original Hole		4	16,364.0	16,366.0	4/13/2024
		Codell, Original Hole		4	16,408.0	16,410.0	4/13/2024
		Codell, Original Hole		4	16,453.0	16,455.0	4/13/2024
		Codell, Original Hole		4	16,498.0	16,500.0	4/13/2024
		Codell, Original Hole		4	16,543.0	16,545.0	4/13/2024
		Codell, Original Hole		4	16,587.0	16,589.0	4/13/2024
		Codell, Original Hole		4	16,632.0	16,634.0	4/13/2024
		Codell, Original Hole		4	16,677.0	16,679.0	4/13/2024
		Codell, Original Hole		4	16,722.0	16,724.0	4/13/2024
		Codell, Original Hole		4	16,767.0	16,769.0	4/13/2024
		Codell, Original Hole		4	16,812.0	16,814.0	4/13/2024
		Codell, Original Hole		4	16,857.0	16,859.0	4/13/2024
		Codell, Original Hole		4	16,902.0	16,904.0	4/13/2024
		Codell, Original Hole		4	16,947.0	16,949.0	4/13/2024
		Codell, Original Hole		4	16,992.0	16,994.0	4/13/2024
		Codell, Original Hole		4	17,037.0	17,039.0	4/12/2024
		Codell, Original Hole		4	17,082.0	17,084.0	4/12/2024
		Codell, Original Hole		4	17,127.0	17,129.0	4/12/2024
		Codell, Original Hole		4	17,172.0	17,174.0	4/12/2024
		Codell, Original Hole		4	17,217.0	17,219.0	4/12/2024
		Codell, Original Hole		4	17,262.0	17,264.0	4/12/2024



P&A Wellbore For State

Well Name: KODAK SOUTH 11C

Original Hole [Land]		Perforation Data					
MD (ftK B)	Vertical schematic (actual)	Linked Zone	Explosive Type	Entered Shot Total	Top (ftKB)	Btm (ftKB)	Date
3,914.7		Codell, Original Hole		4	17,307.0	17,309.0	4/12/2024
7,130.6		Codell, Original Hole		4	17,352.0	17,354.0	4/12/2024
7,912.1		Codell, Original Hole		4	17,397.0	17,399.0	4/10/2024
8,360.9		Codell, Original Hole		4	17,442.0	17,444.0	4/10/2024
8,813.0		Codell, Original Hole		4	17,487.0	17,489.0	4/10/2024
9,261.2		Codell, Original Hole		4	17,532.0	17,534.0	4/10/2024
9,710.0		Codell, Original Hole		4	17,577.0	17,579.0	4/10/2024
10,159.1		Codell, Original Hole		4	17,622.0	17,624.0	4/10/2024
10,608.9		Codell, Original Hole		4	17,667.0	17,669.0	4/10/2024
11,059.1		Codell, Original Hole		4	17,712.0	17,714.0	4/10/2024
11,508.9		Codell, Original Hole		4	17,757.0	17,759.0	4/10/2024
11,958.0		Codell, Original Hole		4	17,801.0	17,803.0	4/10/2024
12,408.1		Codell, Original Hole		4	17,846.0	17,848.0	4/10/2024
12,857.9		Codell, Original Hole		4	17,891.0	17,893.0	4/10/2024
13,262.1		Codell, Original Hole		4	17,936.0	17,938.0	4/10/2024
13,711.9		Codell, Original Hole		4	17,981.0	17,983.0	4/10/2024
14,162.1		Codell, Original Hole		4	18,026.0	18,028.0	4/10/2024
14,607.9		Codell, Original Hole		4	18,071.0	18,073.0	4/9/2024
15,061.0		Codell, Original Hole		4	18,116.0	18,118.0	4/9/2024
15,509.8		Codell, Original Hole		4	18,159.0	18,161.0	4/9/2024
15,960.0		Codell, Original Hole		4	18,203.0	18,205.0	4/9/2024
16,410.1		Codell, Original Hole		4	18,248.0	18,250.0	4/9/2024
16,858.9		Codell, Original Hole		4	18,298.0	18,300.0	4/9/2024
17,309.1		Codell, Original Hole		4	18,341.0	18,343.0	4/9/2024
17,758.9		Codell, Original Hole		4	18,386.0	18,388.0	4/9/2024
18,205.1		Codell, Original Hole		4	18,431.0	18,433.0	4/9/2024
18,612.9		Codell, Original Hole		4	18,476.0	18,478.0	4/9/2024
19,011.8		Codell, Original Hole		4	18,521.0	18,523.0	4/9/2024
		Codell, Original Hole		4	18,566.0	18,568.0	4/9/2024
		Codell, Original Hole		4	18,611.0	18,613.0	4/9/2024
		Codell, Original Hole		4	18,656.0	18,658.0	4/9/2024
		Codell, Original Hole		4	18,701.0	18,703.0	4/9/2024
		Codell, Original Hole		4	18,746.0	18,748.0	4/9/2024
		Codell, Original Hole		4	18,791.0	18,793.0	4/9/2024
		Codell, Original Hole		4	18,836.0	18,838.0	4/9/2024
		Codell, Original Hole		4	18,881.0	18,883.0	4/9/2024
		Codell, Original Hole		4	18,926.0	18,928.0	4/9/2024
		Codell, Original Hole		4	18,971.0	18,973.0	4/9/2024
		Codell, Original Hole		6	19,008.0	19,010.0	4/8/2024
Stim/Frac Stage							
Zone		Start Date		Top (ftKB)		Btm (ftKB)	
	Codell, Original Hole		4/19/2024		7,554.0		7,912.0
	Codell, Original Hole		4/19/2024		7,955.0		8,316.0
	Codell, Original Hole		4/19/2024		8,359.0		8,721.0
	Codell, Original Hole		4/18/2024		8,760.0		9,081.0
	Codell, Original Hole		4/18/2024		9,124.0		9,440.0
	Codell, Original Hole		4/18/2024		9,483.0		9,800.0
	Codell, Original Hole		4/18/2024		9,843.0		10,159.0
	Codell, Original Hole		4/18/2024		10,202.0		10,520.0
	Codell, Original Hole		4/17/2024		10,562.0		10,879.0
	Codell, Original Hole		4/17/2024		10,922.0		11,239.0
	Codell, Original Hole		4/17/2024		11,282.0		11,599.0
	Codell, Original Hole		4/17/2024		11,642.0		11,958.0
	Codell, Original Hole		4/17/2024		12,003.0		12,318.0
	Codell, Original Hole		4/16/2024		12,361.0		12,678.0
	Codell, Original Hole		4/16/2024		12,721.0		13,037.0
	Codell, Original Hole		4/16/2024		13,080.0		13,397.0
	Codell, Original Hole		4/16/2024		13,440.0		13,757.0
	Codell, Original Hole		4/15/2024		13,800.0		14,117.0
	Codell, Original Hole		4/15/2024		14,160.0		14,476.0
	Codell, Original Hole		4/15/2024		14,517.0		14,837.0



P&A Wellbore For State

Well Name: KODAK SOUTH 11C

