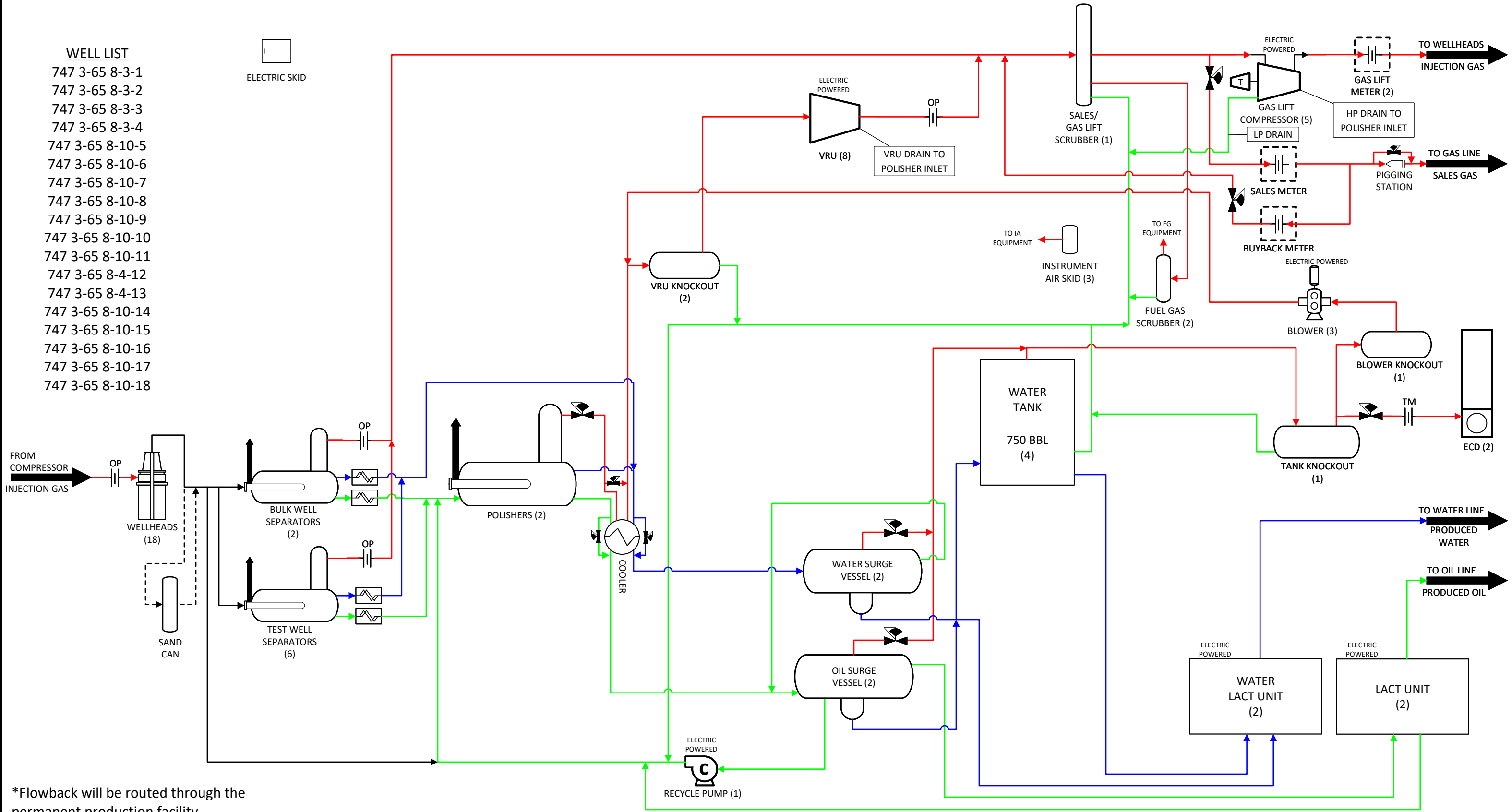
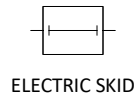


WELL LIST

- 747 3-65 8-3-1
- 747 3-65 8-3-2
- 747 3-65 8-3-3
- 747 3-65 8-3-4
- 747 3-65 8-10-5
- 747 3-65 8-10-6
- 747 3-65 8-10-7
- 747 3-65 8-10-8
- 747 3-65 8-10-9
- 747 3-65 8-10-10
- 747 3-65 8-10-11
- 747 3-65 8-4-12
- 747 3-65 8-4-13
- 747 3-65 8-10-14
- 747 3-65 8-10-15
- 747 3-65 8-10-16
- 747 3-65 8-10-17
- 747 3-65 8-10-18



*Flowback will be routed through the permanent production facility

NOTES:

- OIL
- WATER
- GAS
- MULTI PHASE
- CORIOLIS METER
- ORIFICE FLOW METER
- THERMAL MASS FLOW METER
- CONTROL VALVE
- TEMPORARY FLOWBACK

REV	DESCRIPTION	DATE	CHECKED
1	Issued for Reference	10/28/24	WC
2	Adjust Routing	10/30/24	ET
3	Finalize for Submission	11/1/24	BM
4	ECMC Comments	2/20/25	BM



BISON IV OPERATING, LLC

PROCESS FLOW DIAGRAM
747 PAD
W2NW Section 8 T3S R65W, 6th P.M.