

LOCATION PICTURES
747 PAD
BISON IV OPERATING, LLC



10-22-24 3:12PM

VIEW NORTH ①



10-22-24 3:08PM

VIEW SOUTH ②



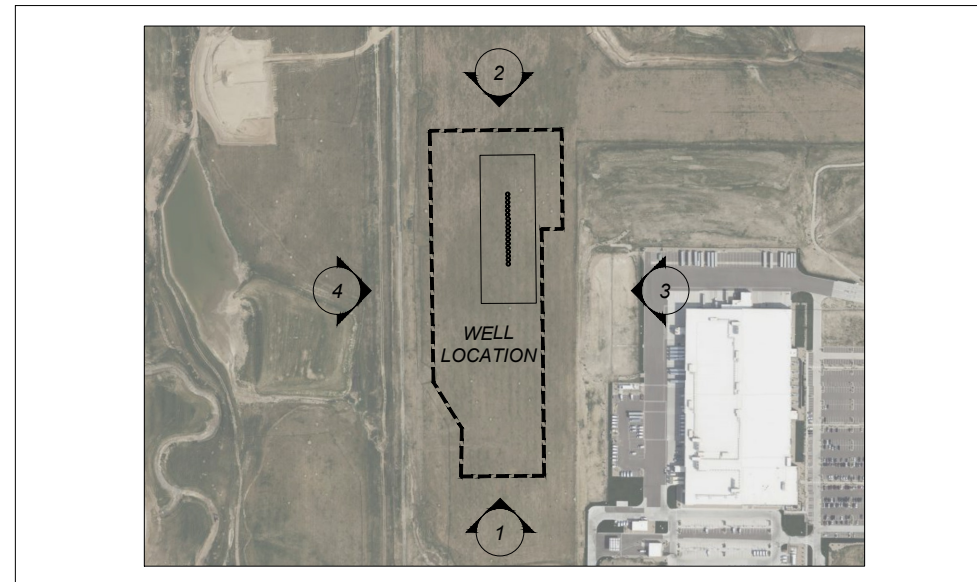
10-22-24 3:10PM

VIEW WEST ③



10-22-24 3:14PM

VIEW EAST ④



PICTURE VIEW LOCATIONS



Avery Land Services
1321 W. Main St., Suite 522, Sterling, CO 80751

LOCATION PICTURES

747 PAD
LOCATION DESCRIPTION:
W_{1/2} OF NW_{1/4} OF
SECTION 8 T-3-S, R-65-W, 6th P.M.
ADAMS COUNTY, COLORADO

Revision	Date	Description
1	2/21/25	ADDED AERIAL IMAGE TO MAP

Field Date:
10/22/2024

Drawing Date:
2/21/25

Drawn By:
KRB

Sheet Number:
1 OF 1