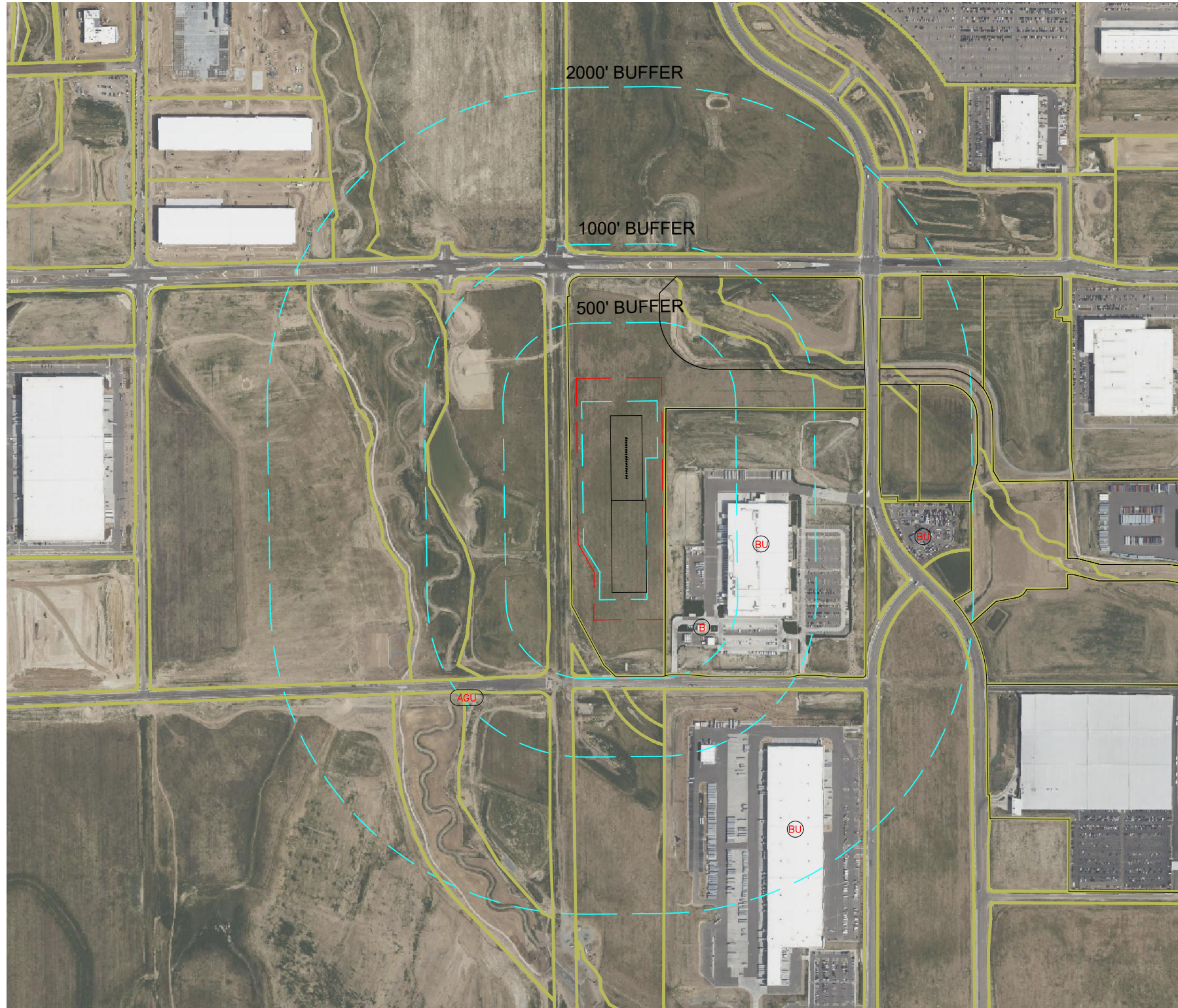


CULTURAL ITEMS MAP
747 PAD
BISON IV OPERATING, LLC



	MEASURED FROM THE NEAREST	PROPOSED WELL HEAD	EDGE OF WORKING PAD
B	BUILDING	±1037' SE	±359' SE
BU	BUILDING UNIT	±660' SE	±513' E
RB	RESIDENTIAL BUILDING	5280'+ W	5280'+ W
HOBUS	HIGH OCCUPANCY BUILDING UNIT	5280'+ W	5280'+ W
S	SCHOOL FACILITY	5280'+ SW	5280'+ SW
DOAA	DESIGNATED OUTSIDE ACTIVITY AREA	5280'+ SW	5280'+ SW
CC	CHILD CARE CENTER	5280'+ SW	5280'+ SW
DIC	DISPROPORTIONATELY IMPACTED COMMUNITY BOUNDARY	0	0
RBU/HOBUS	RESIDENTIAL BUILDING UNIT/HIGH OCCUPANCY BUILDING UNIT/SCHOOL FACILITY	5280'+W	5280'+W
PR	PUBLIC ROAD	±390' W	±110' W
AGU	ABOVE GROUND UTILITY (OVERHEAD POWER)	±1726' SW	±1048' SW
RR	RAILROAD	5280'+ N	5280'+ N
PL	PROPERTY LINE	±248' E	±54' E

WORKING PAD RADII	0-500 FEET	501-1000 FEET	1001-2000 FEET
BUILDING UNIT	0	1	2
RESIDENTIAL BUILDING	0	0	0
HIGH OCCUPANCY BUILDING UNIT	0	0	0
SCHOOL PROPERTIES	0	0	0
SCHOOL FACILITY	0	0	0
DESIGNATED OUTDOOR ACTIVITY AREA	0	0	0

NOTE:
VISIBLE IMPROVEMENTS SHOWN AND LISTED HEREON MAY HAVE BEEN OBTAINED FROM THE AERIAL PHOTO AND OTHER PUBLICLY AVAILABLE DATA. THE ACCURACY OF ANY AND ALL DATA HAS NOT BEEN VERIFIED BY AVERY LAND SERVICES, LLC. EXISTING CONDITIONS MAY DIFFER FROM WHAT IS DEPICTED HEREON.

LEGEND

- PARCEL LINE
- WORKING PAD SURFACE
- OIL AND GAS LOCATION
- PROPOSED WELL
- BUILDING UNIT
- RESIDENTIAL BUILDING
- HIGH OCCUPANCY BUILDING UNIT
- ABOVE GROUND UTILITY

