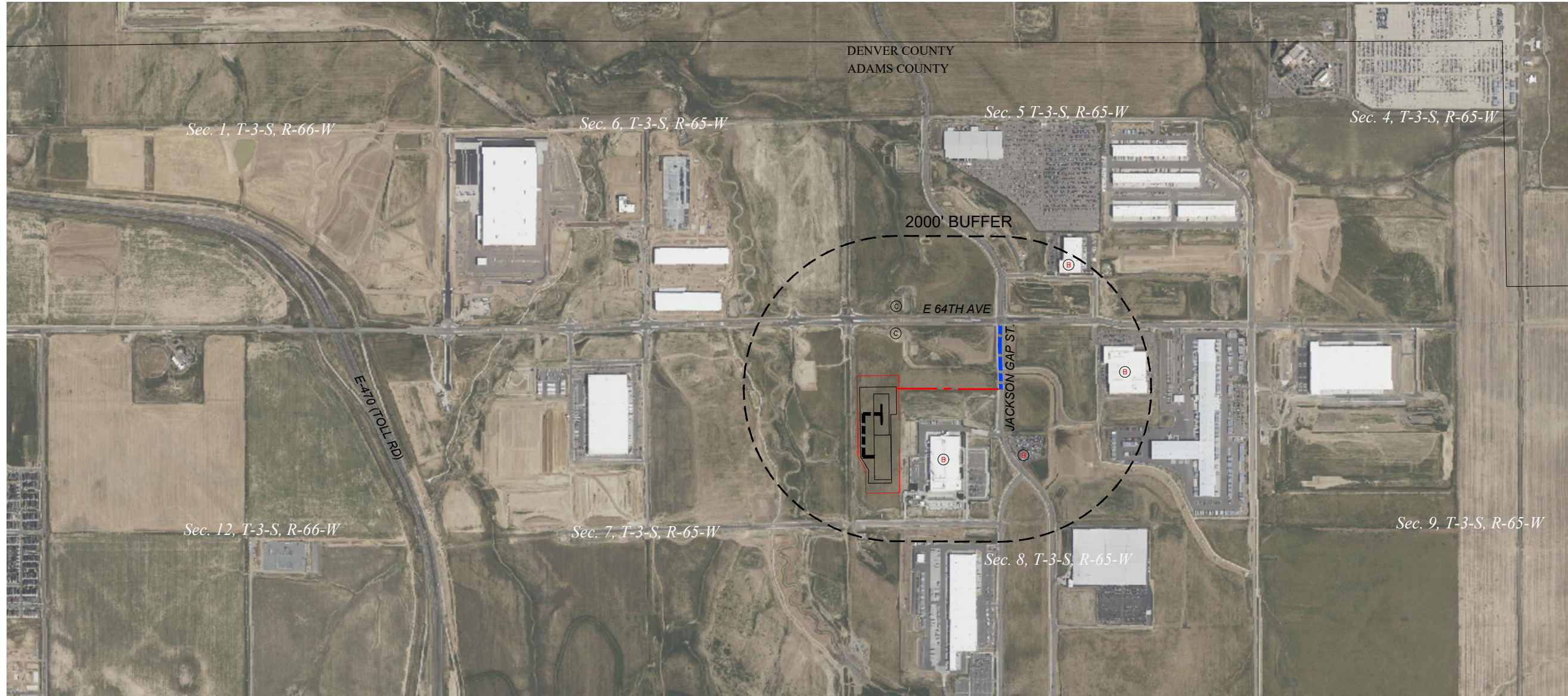


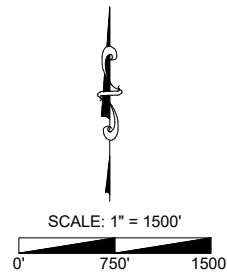
ACCESS ROAD MAP
747 PAD
BISON IV OPERATING, LLC



DATA SOURCE: ECMC

DRIVING DIRECTIONS TO 747 PAD:
FROM THE INTERSECTION OF E 64TH AVE & JACKSON GAP ST. SOUTH APPROXIMATELY 0.2 MILES TO A PROPOSED ACCESS ROAD AND CONTINUE WEST APPROXIMATELY 0.2 MILES ALONG PROPOSED ACCESS ROAD TO THE 747 PAD LOCATION.

NOTE 1:
SEE STORMWATER MANAGEMENT PLAN FOR STORM WATER DETAILS
DATA SOURCE: CNHP, ECMC, USFSW, ECOS, CPW, ADAMS COUNTY ASSESSOR



- LEGEND**
- PROPOSED WELL
 - - - OIL AND GAS LOCATION
 - PUBLIC ROAD
 - - - PROPOSED ACCESS ROAD
 - - - 2000' ACCESS BUFFER
 - ⓑ BUILDING
 - Ⓒ CULVERT

Avery Land Services
1321 W. Main St., Suite 522, Sterling, CO 80751

ACCESS ROAD MAP

747 PAD

LOCATION DESCRIPTION:

SECTION 8 T-3-S, R-65-W, 6th P.M.
ADAMS COUNTY, COLORADO

Revision	Date	Description

Field Date:

08/23/24

Drawing Date:

10/25/24

Drawn By:

KRB

Sheet Number:

1 OF 1