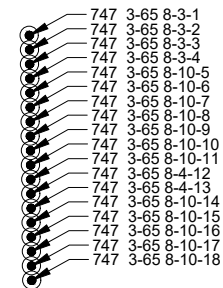
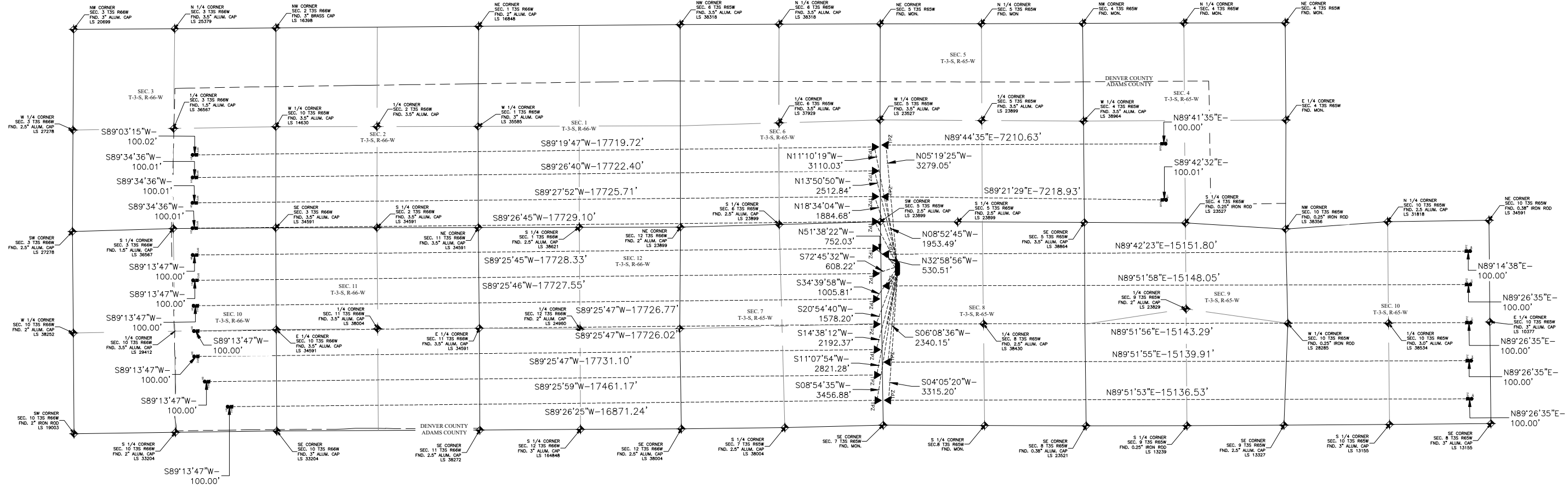
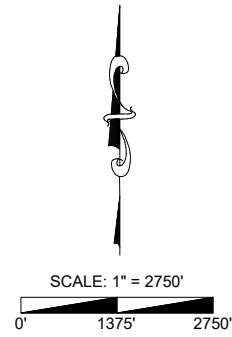


DIRECTIONAL WELL PLAT
747 PAD
BISON IV OPERATING, LLC



WELLS DETAIL
SCALE: 1"=200'

NOTES:

- COORDINATES, BEARINGS, AND DISTANCES SHOWN ARE LAMBERT GRID AND CONFORM TO THE COLORADO STATE PLANE COORDINATE SYSTEM, "NORTH ZONE", NORTH AMERICAN DATUM 1983, U.S. SURVEY FOOT
- DISTANCES TO SECTION LINES ARE MEASURED AT 90 DEGREES FROM SAID SECTION LINES.
- GROUND ELEVATIONS ARE BASED ON AN OBSERVED GPS ELEVATION (NAVD 1988 DATUM)
- IMPROVEMENTS: SEE LOCATION DRAWING FOR ALL VISIBLE IMPROVEMENTS.
- THIS MAP DOES NOT REPRESENT A BOUNDARY SURVEY.

LEGEND

- FOUND MONUMENT AS DESCRIBED
- SURFACE HOLE LOCATION (SHL)
- BOTTOM HOLE LOCATION (BHL)
- TOP PRODUCTION ZONE (TPZ)
- BOTTOM PRODUCTION ZONE (BPZ)

I, STANLEY W. DRANNON, a Licensed Land Surveyor in the State of Colorado, do hereby certify that this Well Location Certificate is a true and correct representation of a survey made on the ground under my direct supervision and all facts are as shown herein.

Stanley W. Drannon
10/23/2024
Stanley W. Drannon
Registered Professional Land Surveyor
Colorado Registration No. 38543



MULTI WELL PLAT

747 PAD
LOCATION DESCRIPTION:
W 1/4 OF NE 1/4 OF
SECTION 8 T-3-S, R-65-W, 6th P.M.
ADAMS COUNTY, COLORADO

Description

Date

Revision

Field Date:

08/23/2024

Drawing Date:

10/23/24

Drawn By:

KRB

Sheet Number:

2 OF 2

