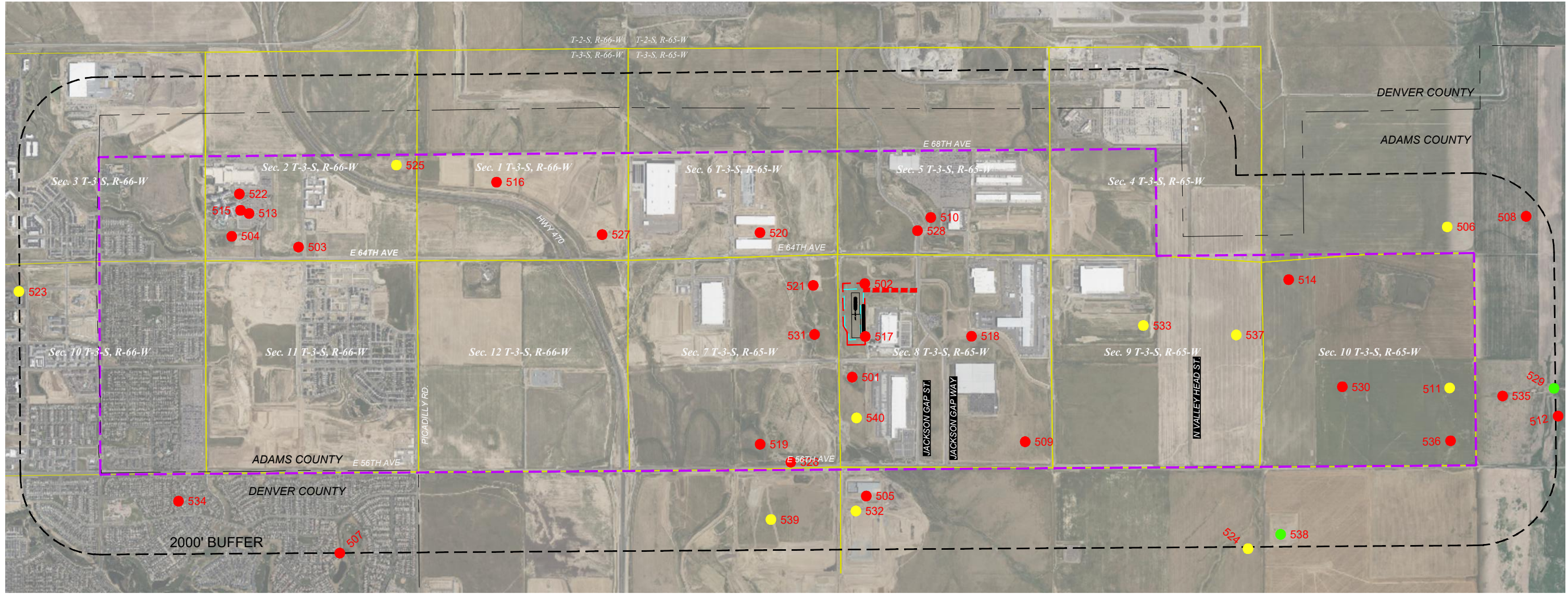


NOTE 1:
THIS MAP WAS COMPILED USING AVAILABLE PUBLIC RECORDS.
ACCURACY OF ANY AND ALL DATA HAS NOT BEEN VERIFIED BY
AVERY LAND SERVICES, LLC. EXISTING CONDITIONS MAY DIFFER
FROM WHAT IS DEPICTED HEREON.
DATA SOURCE: COGCC

NOTE 2:
1. NO OFFSITE FLOWLINE PROPOSED
2. THIRD PARTY CUSTODY TRANSFER OCCURS AT LACT FOR OIL.
3. THIRD PARTY CUSTODY TRANSFER OCCURS AT METER FOR GAS.

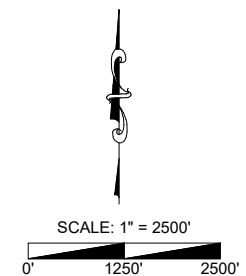
RELATED LOCATION AND FLOWLINE MAP

747 PAD
BISON IV OPERATING, LLC



ID	LOCATION ID	LOCATION NAME	STATUS	OPERATOR
501	311273	MONAGHAN-63S65W	CL	BURKE* MURIEL E
502	311308	MONAGHAN-63S65W	CL	BURKE* MURIEL E
503	311514	DERBY DOME ERF-63S66W	CL	ENERGY & CARBON MANAGEMENT COMMISSION
504	311510	BAXTER-63S66W	CL	BUTLER PETROLEUM
505	311708	MCVEY-63S65W	CL	ROUSE * JACK
506	320579	DIA-63S65W	AL	PETRO-CANADA RESOURCES (USA) INC
507	375725	DAVIDSON-63S66W	CL	BOBCAT OIL CO
508	375935	JEFF DROHAN-63S65W	CL	WEBB RESOURCES INC
509	375970	KAHN-63S65W	CL	SUMMIT OIL CO
510	376231	MONAGHAN FARMS 24B-5-63S65W	CL	CHAMPLIN PETROLEUM COMPANY
511	376931	BASS BOX ELDER FARMS-63S65W	AL	BASS ENTERPRISES PRODUCTION CO
512	377177	BOX ELDER FARMS-63S65W	CL	AMPET INC
513	377483	DERBY DOME ERF-63S66W	CL	ENERGY & CARBON MANAGEMENT COMMISSION
514	377487	BOX ELDER-63S65W	CL	ROUSE * JACK
515	374716	DERBY DOME ERF-63S66W	CL	ENERGY & CARBON MANAGEMENT COMMISSION
516	374719	BOX ELDER FARMS-63S66W	CL	APACHE CORPORATION
517	375626	MONAGHAN-BOXELDER-63S65W	CL	TINDALL OPERATING COMPANY
518	376488	BOX ELDER FARM CO-63S65W	CL	PETROLEUM CORP OF AMERICA
519	376883	UPRR-63S65W	CL	CHANDLER & ASSOCIATES LLC
520	376867	BOX ELDER FARMS-63S65W	CL	PAINE & ASSOCIATES
521	377018	BASS BOX ELDER FARMS-63S65W	CL	ROUSE * JACK
522	377484	DERBY DOME ERF-63S66W	CL	ENERGY & CARBON MANAGEMENT COMMISSION
523	381481	MATSCHKE-63S66W	AL	CHANDLER & ASSOCIATES LLC
524	441074	State of Colorado 3-65 16-17	AL	BURLINGTON RESOURCES OIL & GAS LP

ID	LOCATION ID	LOCATION NAME	STATUS	OPERATOR
525	460204	ACM Highpoint	AL	AXIS EXPLORATION LLC
526	477620	JOSEPH J.C. PAINE	CL	PAINE* JOSEPH J.C. DBA PAINE PETROLEUM COMPANY LLC
527	311504	BOX ELDER-63S66W	CL	ROUSE * JACK
528	311513	U P MONAGHAN-63S65W	CL	BURKE* MURIEL E
529	320207	COTTONWOOD-UPRR-63S65W	AC	KP KAUFFMAN COMPANY INC
530	320226	RUNWAY-63S65W	CL	FOUNDATION ENERGY MANAGEMENT LLC
531	414601	JOSEPH J.C. PAINE	CL	PAINE* JOSEPH J.C. DBA PAINE PETROLEUM COMPANY LLC
532	428472	SUN EMPIRE	AL	BURLINGTON RESOURCES OIL & GAS LP
533	454463	ACP 3-65	AL	AXIS EXPLORATION LLC
534	375564	EDWARD ROLAND HOYT-63S66W	CL	AMOCO PRODUCTION COMPANY
535	376929	BASS BOX ELDER INVESTMENT-63S65W	CL	THOROFARE RESOURCES; INC
536	376956	BASS BOX ELDER FARMS-63S65W	CL	BASS ENTERPRISES PRODUCTION CO
537	377458	DIA-63S65W	AL	PETRO-CANADA RESOURCES (USA) INC
538	449376	Aspen 3-65	AC	CRESTONE PEAK RESOURCES OPERATING LLC
539	450157	DIBC	AL	AXIS EXPLORATION LLC
540	454469	ACP	AL	AXIS EXPLORATION LLC



- LEGEND**
- PROPOSED REFERENCE POINT
 - PRODUCING
 - ABANDONED LOCATION
 - CLOSED
 - SHUT IN
 - ABANDONED & PLUGGED LOCATION
 - TEMPORARILY ABANDONED
 - SECTION LINE
 - WORKING PAD SURFACE
 - OIL AND GAS LOCATION
 - PROPOSED OGDP & DSU BOUNDARY
 - PROPOSED FLOWLINE CORRIDOR
 - PROPOSED ACCESS ROAD
 - PROPOSED 2000' BUFFER
 - PROPOSED PRODUCTION FACILITY

Avery Land Services
1321 W. Main St., Suite 522, Sterling, CO 80751

747 PAD
W½ OF NW¼ OF
SECTION 08 T-3-S, R-65-W, 6th P.M.
ADAMS COUNTY, COLORADO

RELATED LOCATION AND FLOWLINE MAP

Description

Date

Revision

Field Date:

Drawing Date:

Drawn By:

Sheet Number:

1 OF 1