

# FULCRUM ENERGY OPERATING

Location: COLORADO Slot: SLOT#06 JANET 0780 12S-4H9 (377°FNL & 819°FEL,SEC.04)

Field: JACKSON COUNTY (NAD83/TN) Well: JANET 0780 12S-4H9

Facility: SEC.04-T07N-R80W Wellbore: JANET 0780 12S-4H9 PWB

Plot reference wellpath is JANET 0780 12S-4H9 (REV-D.0) PWP	Grid System: NAD83 / Lambert Colorado SP, Northern Zone (501), US feet
True vertical depths are referenced to (8099'GL+25.5'KB = 8124.5'RKB) (RKB)	North Reference: True north
Reference wellpath measured depths are referenced to (8099'GL+25.5'KB = 8124.5'RKB) (RKB)	Scale: True distance
(8099'GL+25.5'KB = 8124.5'RKB) (RKB) to Mean Sea Level: 8124.5 feet	Coordinates are in feet referenced to Slot
Mean Sea Level to Ground level (At Slot: SLOT#06 JANET 0780 12S-4H9 (377°FNL & 819°FEL,SEC.04)); 0 feet	Depths are in feet
Offset wellpath MDs are referenced to each path's default MD datum	Created by: meyedavr on 2025-05-14; Database: WA_Denver

## Location Information

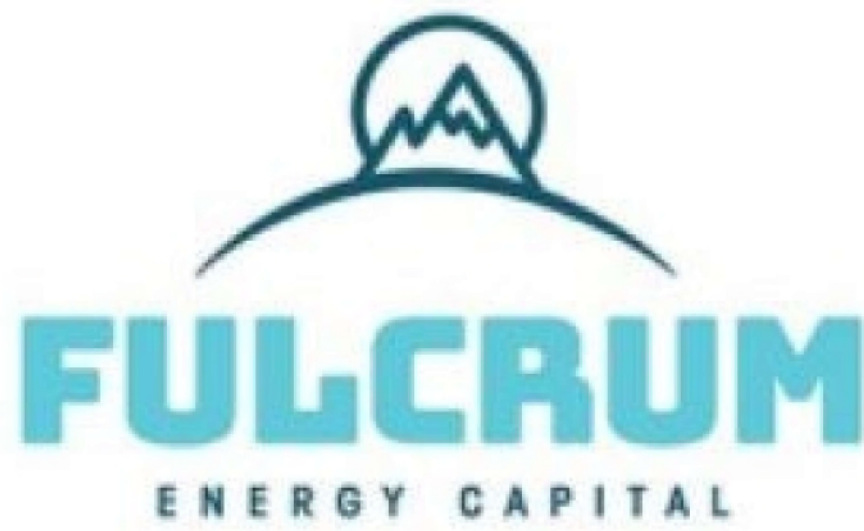
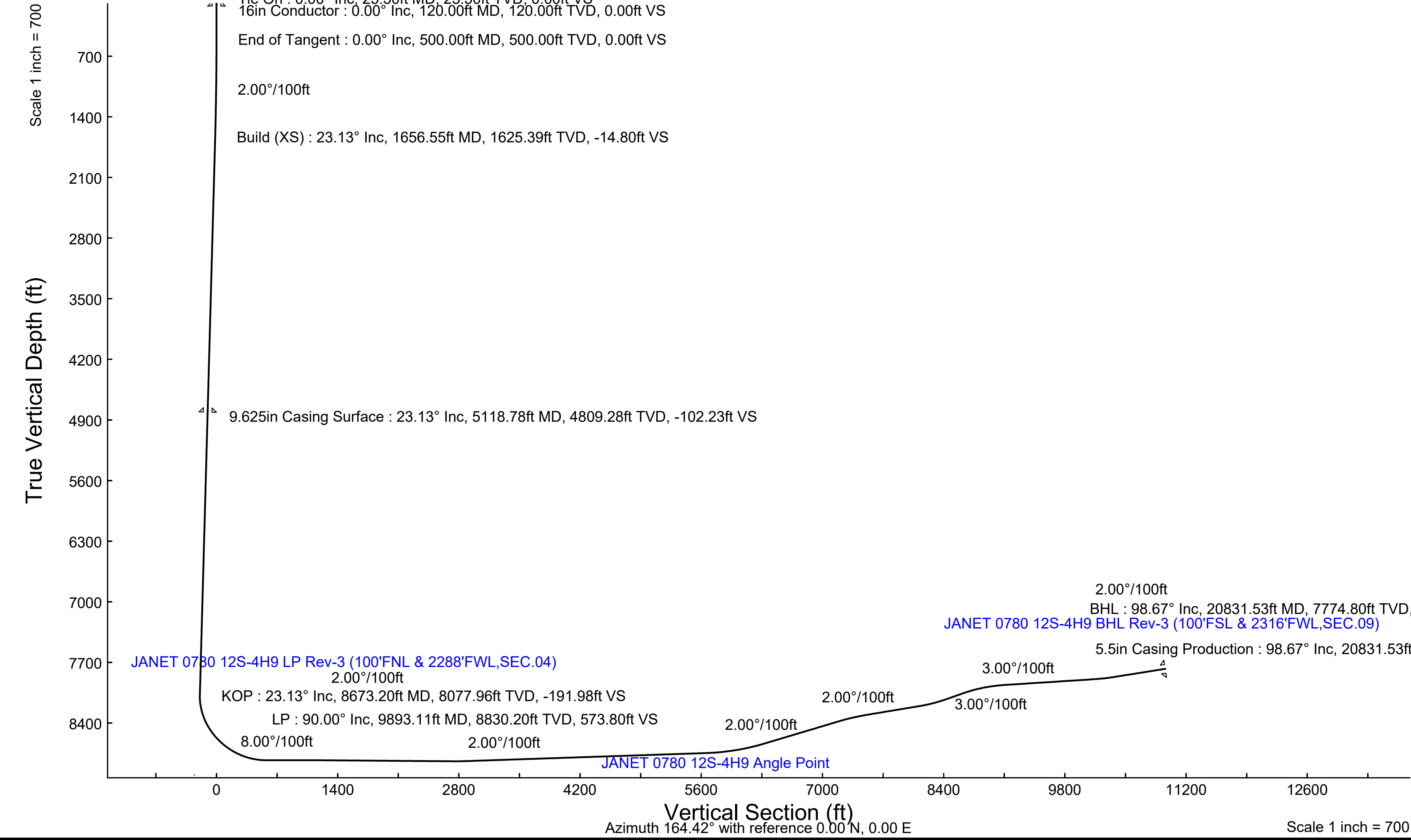
Facility Name			Grid East (US ft)	Grid North (US ft)	Latitude	Longitude
SEC.04-T07N-R80W			2752737.421	1467805.737	40°36'50.8157"N	106°23'26.2746"W
Slot	Local N (ft)	Local E (ft)	Grid East (US ft)	Grid North (US ft)	Latitude	Longitude
SLOT#06 JANET 0780 12S-4H9 (377°FNL & 819°FEL,SEC.04)	1.01	99.98	2752837.400	1467805.740	40°36'50.8256"N	106°23'24.9782"W
(8099'GL+25.5'KB = 8124.5'RKB) (RKB) to Ground level (At Slot: SLOT#06 JANET 0780 12S-4H9 (377°FNL & 819°FEL,SEC.04))					8124.5ft	
Mean Sea Level to Ground level (At Slot: SLOT#06 JANET 0780 12S-4H9 (377°FNL & 819°FEL,SEC.04))					0ft	
(8099'GL+25.5'KB = 8124.5'RKB) (RKB) to Mean Sea Level					8124.5ft	

## Well Profile Data

Design Comment	MD (ft)	Inc (°)	Az (°)	TVD (ft)	Local N (ft)	Local E (ft)	DLS (°/100ft)	VS (ft)
Tie On	25.50	0.000	70.739	25.50	0.00	0.00	0.00	0.00
End of Tangent	500.00	0.000	70.739	500.00	0.00	0.00	0.00	0.00
Build (XS)	1656.55	23.131	70.739	1625.39	75.97	217.41	2.00	-14.80
KOP	8673.20	23.131	70.739	8077.96	985.25	2819.51	0.00	-191.98
LP	9893.11	90.000	180.394	8830.20	273.27	3117.24	8.00	573.80
WP1	10516.90	90.000	180.394	8830.20	-350.51	3112.95	0.00	1173.52
3D Arc (J)	10552.36	89.573	180.960	8830.33	-385.97	3112.53	2.00	1207.56
WP2	12158.28	89.573	180.960	8842.30	-1991.61	3085.63	0.00	2747.01
End of 3D Arc (J)	12277.10	91.831	181.703	8840.84	-2110.39	3082.87	2.00	2860.69
End of Tangent (J)	15205.54	91.831	181.703	8747.30	-5036.04	2995.88	0.00	5655.54
End of 3D Arc	15319.94	94.063	181.220	8741.42	-5150.24	2992.97	2.00	5764.76
3D Arc (XS)	15921.80	106.048	180.080	8636.53	-5741.73	2986.15	2.00	6332.69
End of Tangent (XS)	16841.57	106.048	180.080	8382.27	-6625.66	2984.92	0.00	7183.83
WP4	17192.98	99.071	180.956	8305.90	-6968.43	2981.78	2.00	7513.17
WP5	17837.38	99.071	180.956	8204.30	-7604.69	2971.17	0.00	8123.21
3D Arc (J)	18162.87	108.715	179.375	8126.23	-7920.27	2970.17	3.00	8426.93
WP6	18372.41	108.715	179.375	8059.00	-8118.71	2972.33	0.00	8618.67
3D Arc (J)	18880.90	93.522	180.779	7961.22	-8616.18	2971.50	3.00	9097.65
WP7	19957.13	93.522	180.779	7895.10	-9690.29	2956.91	0.00	10128.39
3D Arc (J)	20214.59	98.668	180.983	7867.77	-9946.17	2952.98	2.00	10373.82
BHL	20831.53	98.668	180.983	7774.80	-10555.98	2942.52	0.00	10958.42

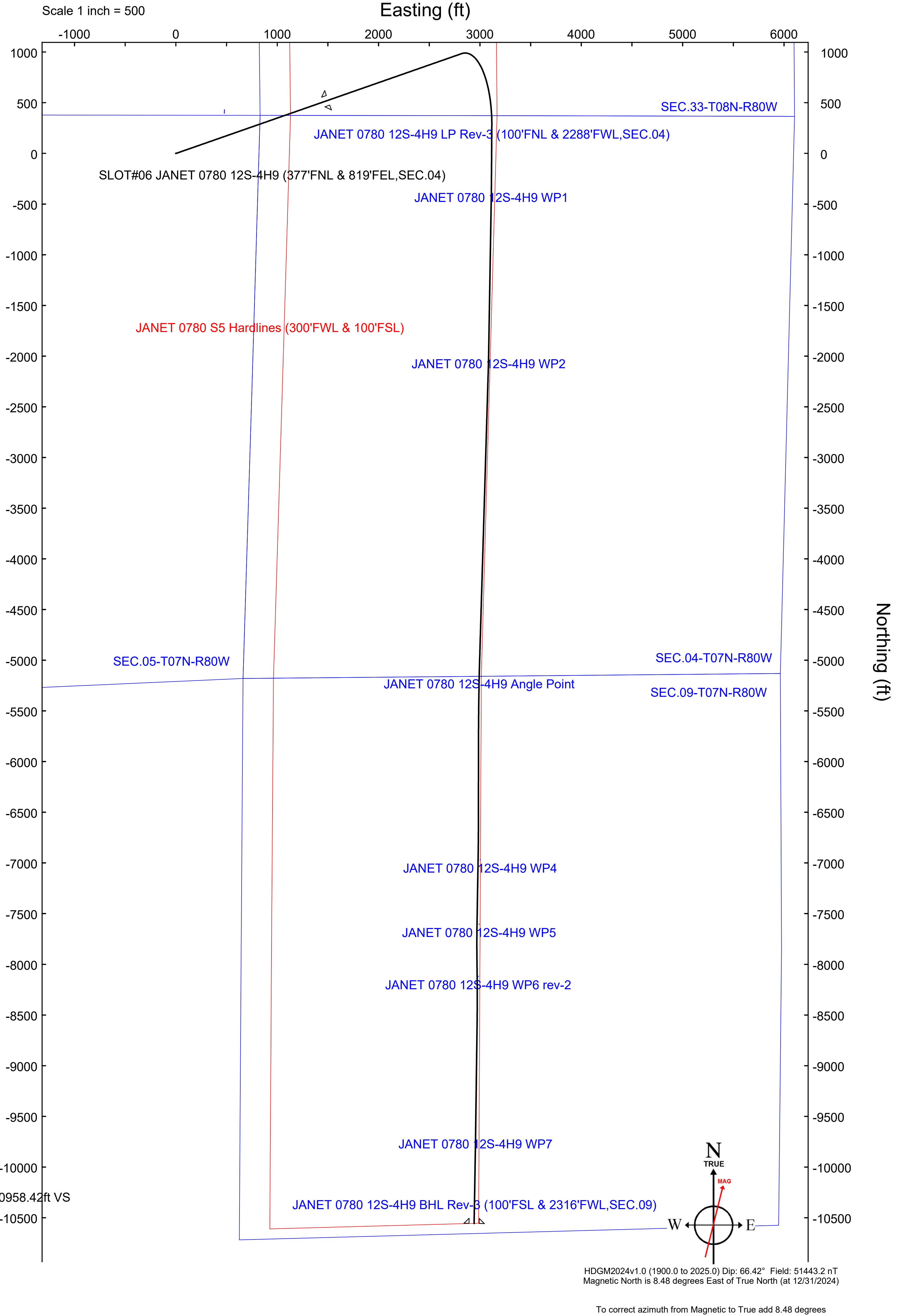
## Survey Program

Start MD (ft)	End MD (ft)	Tool	Model	Log Name/Comment	Wellbore
25.50	5118.78	OWSG MWD rev2	OWSG MWD rev2 - Standard		JANET 0780 12S-4H9 PWB
5118.78	20831.64	BH AutoTrak Curve/eXpress (2019)	BH AutoTrak Curve/eXpress (2019) (HRGM, Short spacing)		JANET 0780 12S-4H9 PWB



## Targets

Name	MD (ft)	TVD (ft)	Local N (ft)	Local E (ft)	Grid East (US ft)	Grid North (US ft)	Latitude	Longitude
SEC.04-T07N-R80W	N/A	6.50	419.94	478.83	2753320.41	1468220.84	40°36'54.9751"N	106°23'18.7694"W
SEC.05-T07N-R80W	N/A	6.50	409.94	478.83	2753320.31	1468210.84	40°36'54.8763"N	106°23'18.7694"W
SEC.09-T07N-R80W	N/A	6.50	398.99	478.02	2753319.39	1468199.90	40°36'54.7682"N	106°23'18.7798"W
SEC.33-T08N-R80W	N/A	6.50	429.94	478.83	2753320.51	1468230.84	40°36'55.0740"N	106°23'18.7694"W
JANET 0780 12S-4H9 BHL Rev-2 (122°FSL & 2315°FWL,SEC.09)	N/A	7774.80	-10533.69	2942.87	2755674.30	1467243.30	40°35'6.7372"N	106°22'46.8357"W
JANET 0780 12S-4H9 BHL Rev-3 (100°FSL & 2316°FWL,SEC.09)	20831.53	7774.80	-10555.98	2942.52	2755673.72	1457221.02	40°35'6.5170"N	106°22'46.8403"W
JANET 0780 12S-4H9 WP7	19957.13	7895.10	-9690.29	2956.91	2755696.80	1458086.50	40°35'15.0712"N	106°22'46.6525"W
JANET 0780 12S-4H9 WP6 rev-2	N/A	8059.00	-8118.60	2983.23	2755738.90	1459657.80	40°35'30.8015"N	106°22'46.3088"W
JANET 0780 12S-4H9 WP5	N/A	8204.30	-7604.48	2991.77	2755752.60	1460171.80	40°35'35.6817"N	106°22'46.1973"W
JANET 0780 12S-4H9 WP4	N/A	8305.90	-6968.22	3002.38	2755769.60	1460807.90	40°35'41.9688"N	106°22'46.0587"W
JANET 0780 12S-4H9 Angle Point	N/A	8743.40	-5150.24	2992.97	2755778.44	1462625.84	40°35'59.9328"N	106°22'46.1779"W
JANET 0780 12S-4H9 LP Rev-2 (100°FNL & 2285°FWL,SEC.04)	N/A	8830.20	271.91	3117.27	2755957.16	1468046.33	40°36'53.5105"N	106°22'44.5576"W
JANET 0780 12S-4H9 LP Rev-3 (100°FNL & 2288°FWL,SEC.04)	9893.11	8830.20	273.27	3117.24	2755957.15	1468047.69	40°36'53.5239"N	106°22'44.5580"W
JANET 0780 12S-4H9 WP1	10516.90	8830.20	-350.51	3112.95	2755946.60	1467424.00	40°36'47.3602"N	106°22'44.6146"W
JANET 0780 12S-4H9 WP2	12158.28	8842.30	-1991.61	3085.63	2755902.80	1465783.30	40°36'31.1441"N	106°22'44.9716"W
JANET 0780 S5 Hardlines (300°FWL & 100°FSL)	N/A	9000.00	398.99	478.02	2753319.39	1468199.90	40°36'54.7682"N	106°23'18.7798"W







# Planned Wellpath Report

JANET 0780 12S-4H9 (REV-D.0) PWP

Page 1 of 8



## REFERENCE WELLPATH IDENTIFICATION

Operator	FULCRUM ENERGY OPERATING	Well	JANET 0780 12S-4H9
Field	JACKSON COUNTY (NAD83/TN)	API	05-057-06639
Facility	SEC.04-T07N-R80W	Wellbore	JANET 0780 12S-4H9 PWB
Slot	SLOT#06 JANET 0780 12S-4H9 (377'FNL & 819'FEL,SEC.04)		

## REPORT SETUP INFORMATION

Projection System	NAD83 / Lambert Colorado SP, Northern Zone (501), US feet	Software System	WellArchitect® 6.0
North Reference	True	User	Meyedavr
Scale	0.999977	Report Generated	5/14/2025 at 2:53:10 PM
Convergence at slot	0.58° West	Database	WA_Denver

## WELLPATH LOCATION

	Local coordinates		Grid coordinates		Geographic coordinates	
	North[ft]	East[ft]	Easting[US ft]	Northing[US ft]	Latitude	Longitude
Slot Location	1.01	99.98	2752837.40	1467805.74	40.6141182°	-106.3902717°
Facility Reference Pt			2752737.42	1467805.74	40.6141155°	-106.3906318°
Field Reference Pt			2986049.83	1344849.24	40.2800000°	-105.5500000°

## WELLPATH DATUM

Calculation method	Minimum curvature	(8099'GL+25.5'KB = 8124.5'RKB) (RKB) to Facility Vertical Datum	8124.50ft
Horizontal Reference Pt	Slot	(8099'GL+25.5'KB = 8124.5'RKB) (RKB) to Mean Sea Level	8124.50ft
Vertical Reference Pt	(8099'GL+25.5'KB = 8124.5'RKB) (RKB)	(8099'GL+25.5'KB = 8124.5'RKB) (RKB) to Ground Level at Slot (SLOT#06 JANET 0780 12S-4H9 (377'FNL & 819'FEL,SEC.04))	8124.50ft
MD Reference Pt	(8099'GL+25.5'KB = 8124.5'RKB) (RKB)	Section Origin	N 0.00, E 0.00 ft
Field Vertical Reference	Mean Sea Level	Section Azimuth	164.42°



# Planned Wellpath Report

JANET 0780 12S-4H9 (REV-D.0) PWP

Page 2 of 8



REFERENCE WELLPATH IDENTIFICATION			
Operator	FULCRUM ENERGY OPERATING	Well	JANET 0780 12S-4H9
Field	JACKSON COUNTY (NAD83/TN)	API	05-057-06639
Facility	SEC.04-T07N-R80W	Wellbore	JANET 0780 12S-4H9 PWB
Slot	SLOT#06 JANET 0780 12S-4H9 (377'FNL & 819'FEL,SEC.04)		

WELLPATH DATA (230 stations) † = interpolated, ‡ = extrapolated station												
MD [ft]	Inclination [°]	Azimuth [°]	TVD [ft]	Vert Sect [ft]	North [ft]	East [ft]	Grid East [US ft]	Grid North [US ft]	Latitude	Longitude	DLS [°/100ft]	Comments
0.00†	0.000	70.739	0.00	0.00	0.00	0.00	2752837.40	1467805.74	40.6141182	-106.3902717	0.00	
25.50	0.000	70.739	25.50	0.00	0.00	0.00	2752837.40	1467805.74	40.6141182	-106.3902717	0.00	Tie On
125.50†	0.000	70.739	125.50	0.00	0.00	0.00	2752837.40	1467805.74	40.6141182	-106.3902717	0.00	
225.50†	0.000	70.739	225.50	0.00	0.00	0.00	2752837.40	1467805.74	40.6141182	-106.3902717	0.00	
325.50†	0.000	70.739	325.50	0.00	0.00	0.00	2752837.40	1467805.74	40.6141182	-106.3902717	0.00	
425.50†	0.000	70.739	425.50	0.00	0.00	0.00	2752837.40	1467805.74	40.6141182	-106.3902717	0.00	
500.00	0.000	70.739	500.00	0.00	0.00	0.00	2752837.40	1467805.74	40.6141182	-106.3902717	0.00	End of Tangent
525.50†	0.510	70.739	525.50	-0.01	0.04	0.11	2752837.51	1467805.78	40.6141183	-106.3902713	2.00	
625.50†	2.510	70.739	625.46	-0.18	0.91	2.59	2752840.00	1467806.62	40.6141207	-106.3902624	2.00	
725.50†	4.510	70.739	725.27	-0.57	2.93	8.37	2752845.80	1467808.58	40.6141263	-106.3902416	2.00	
825.50†	6.510	70.739	824.80	-1.19	6.09	17.44	2752854.90	1467811.66	40.6141350	-106.3902089	2.00	
925.50†	8.510	70.739	923.94	-2.03	10.40	29.78	2752867.28	1467815.85	40.6141468	-106.3901645	2.00	
1025.50†	10.510	70.739	1022.56	-3.09	15.85	45.37	2752882.93	1467821.14	40.6141618	-106.3901083	2.00	
1125.50†	12.510	70.739	1120.54	-4.37	22.44	64.21	2752901.83	1467827.53	40.6141798	-106.3900405	2.00	
1225.50†	14.510	70.739	1217.77	-5.87	30.14	86.26	2752923.96	1467835.01	40.6142010	-106.3899610	2.00	
1325.50†	16.510	70.739	1314.12	-7.59	38.96	111.50	2752949.29	1467843.58	40.6142252	-106.3898701	2.00	
1425.50†	18.510	70.739	1409.49	-9.53	48.89	139.90	2752977.79	1467853.22	40.6142524	-106.3897678	2.00	
1525.50†	20.510	70.739	1503.74	-11.67	59.90	171.43	2753009.42	1467863.92	40.6142827	-106.3896543	2.00	
1625.50†	22.510	70.739	1596.77	-14.03	72.00	206.04	2753044.15	1467875.67	40.6143159	-106.3895296	2.00	
1656.55	23.131	70.739	1625.39	-14.80	75.97	217.41	2753055.56	1467879.52	40.6143268	-106.3894887	2.00	Build (XS)
1725.50†	23.131	70.739	1688.80	-16.54	84.91	242.98	2753081.22	1467888.20	40.6143513	-106.3893966	0.00	
1825.50†	23.131	70.739	1780.76	-19.07	97.87	280.07	2753118.43	1467900.79	40.6143869	-106.3892630	0.00	
1925.50†	23.131	70.739	1872.72	-21.59	110.82	317.15	2753155.64	1467913.37	40.6144224	-106.3891294	0.00	
2025.50†	23.131	70.739	1964.68	-24.12	123.78	354.24	2753192.85	1467925.96	40.6144580	-106.3889958	0.00	
2125.50†	23.131	70.739	2056.64	-26.64	136.74	391.32	2753230.06	1467938.54	40.6144936	-106.3888623	0.00	
2225.50†	23.131	70.739	2148.60	-29.17	149.70	428.40	2753267.28	1467951.13	40.6145291	-106.3887287	0.00	
2325.50†	23.131	70.739	2240.56	-31.69	162.66	465.49	2753304.49	1467963.71	40.6145647	-106.3885951	0.00	
2425.50†	23.131	70.739	2332.52	-34.22	175.62	502.57	2753341.70	1467976.30	40.6146003	-106.3884615	0.00	
2525.50†	23.131	70.739	2424.48	-36.74	188.58	539.66	2753378.91	1467988.89	40.6146358	-106.3883280	0.00	
2625.50†	23.131	70.739	2516.44	-39.27	201.54	576.74	2753416.12	1468001.47	40.6146714	-106.3881944	0.00	
2725.50†	23.131	70.739	2608.40	-41.80	214.50	613.83	2753453.33	1468014.06	40.6147070	-106.3880608	0.00	
2825.50†	23.131	70.739	2700.36	-44.32	227.45	650.91	2753490.55	1468026.64	40.6147425	-106.3879272	0.00	
2925.50†	23.131	70.739	2792.33	-46.85	240.41	688.00	2753527.76	1468039.23	40.6147781	-106.3877937	0.00	
3025.50†	23.131	70.739	2884.29	-49.37	253.37	725.08	2753564.97	1468051.81	40.6148137	-106.3876601	0.00	
3125.50†	23.131	70.739	2976.25	-51.90	266.33	762.17	2753602.18	1468064.40	40.6148492	-106.3875265	0.00	
3225.50†	23.131	70.739	3068.21	-54.42	279.29	799.25	2753639.39	1468076.98	40.6148848	-106.3873929	0.00	
3325.50†	23.131	70.739	3160.17	-56.95	292.25	836.34	2753676.61	1468089.57	40.6149204	-106.3872594	0.00	
3425.50†	23.131	70.739	3252.13	-59.47	305.21	873.42	2753713.82	1468102.16	40.6149559	-106.3871258	0.00	
3525.50†	23.131	70.739	3344.09	-62.00	318.17	910.51	2753751.03	1468114.74	40.6149915	-106.3869922	0.00	
3625.50†	23.131	70.739	3436.05	-64.52	331.12	947.59	2753788.24	1468127.33	40.6150271	-106.3868586	0.00	
3725.50†	23.131	70.739	3528.01	-67.05	344.08	984.67	2753825.45	1468139.91	40.6150626	-106.3867251	0.00	
3825.50†	23.131	70.739	3619.97	-69.57	357.04	1021.76	2753862.67	1468152.50	40.6150982	-106.3865915	0.00	
3925.50†	23.131	70.739	3711.93	-72.10	370.00	1058.84	2753899.88	1468165.08	40.6151338	-106.3864579	0.00	
4025.50†	23.131	70.739	3803.90	-74.62	382.96	1095.93	2753937.09	1468177.67	40.6151693	-106.3863243	0.00	
4125.50†	23.131	70.739	3895.86	-77.15	395.92	1133.01	2753974.30	1468190.25	40.6152049	-106.3861908	0.00	



# Planned Wellpath Report

JANET 0780 12S-4H9 (REV-D.0) PWP

Page 3 of 8



REFERENCE WELLPATH IDENTIFICATION			
Operator	FULCRUM ENERGY OPERATING	Well	JANET 0780 12S-4H9
Field	JACKSON COUNTY (NAD83/TN)	API	05-057-06639
Facility	SEC.04-T07N-R80W	Wellbore	JANET 0780 12S-4H9 PWB
Slot	SLOT#06 JANET 0780 12S-4H9 (377'FNL & 819'FEL,SEC.04)		

WELLPATH DATA (230 stations) † = interpolated, ‡ = extrapolated station												
MD [ft]	Inclination [°]	Azimuth [°]	TVD [ft]	Vert Sect [ft]	North [ft]	East [ft]	Grid East [US ft]	Grid North [US ft]	Latitude	Longitude	DLS [°/100ft]	Comments
4225.50†	23.131	70.739	3987.82	-79.67	408.88	1170.10	2754011.51	1468202.84	40.6152404	-106.3860572	0.00	
4325.50†	23.131	70.739	4079.78	-82.20	421.84	1207.18	2754048.73	1468215.43	40.6152760	-106.3859236	0.00	
4425.50†	23.131	70.739	4171.74	-84.72	434.80	1244.27	2754085.94	1468228.01	40.6153116	-106.3857900	0.00	
4525.50†	23.131	70.739	4263.70	-87.25	447.75	1281.35	2754123.15	1468240.60	40.6153471	-106.3856565	0.00	
4625.50†	23.131	70.739	4355.66	-89.77	460.71	1318.44	2754160.36	1468253.18	40.6153827	-106.3855229	0.00	
4725.50†	23.131	70.739	4447.62	-92.30	473.67	1355.52	2754197.57	1468265.77	40.6154183	-106.3853893	0.00	
4825.50†	23.131	70.739	4539.58	-94.82	486.63	1392.61	2754234.79	1468278.35	40.6154538	-106.3852557	0.00	
4925.50†	23.131	70.739	4631.54	-97.35	499.59	1429.69	2754272.00	1468290.94	40.6154894	-106.3851221	0.00	
5025.50†	23.131	70.739	4723.50	-99.87	512.55	1466.77	2754309.21	1468303.52	40.6155250	-106.3849886	0.00	
5125.50†	23.131	70.739	4815.46	-102.40	525.51	1503.86	2754346.42	1468316.11	40.6155605	-106.3848550	0.00	
5225.50†	23.131	70.739	4907.43	-104.92	538.47	1540.94	2754383.63	1468328.70	40.6155961	-106.3847214	0.00	
5325.50†	23.131	70.739	4999.39	-107.45	551.42	1578.03	2754420.85	1468341.28	40.6156316	-106.3845878	0.00	
5425.50†	23.131	70.739	5091.35	-109.97	564.38	1615.11	2754458.06	1468353.87	40.6156672	-106.3844543	0.00	
5525.50†	23.131	70.739	5183.31	-112.50	577.34	1652.20	2754495.27	1468366.45	40.6157028	-106.3843207	0.00	
5625.50†	23.131	70.739	5275.27	-115.02	590.30	1689.28	2754532.48	1468379.04	40.6157383	-106.3841871	0.00	
5725.50†	23.131	70.739	5367.23	-117.55	603.26	1726.37	2754569.69	1468391.62	40.6157739	-106.3840535	0.00	
5825.50†	23.131	70.739	5459.19	-120.07	616.22	1763.45	2754606.91	1468404.21	40.6158095	-106.3839199	0.00	
5925.50†	23.131	70.739	5551.15	-122.60	629.18	1800.54	2754644.12	1468416.79	40.6158450	-106.3837864	0.00	
6025.50†	23.131	70.739	5643.11	-125.12	642.14	1837.62	2754681.33	1468429.38	40.6158806	-106.3836528	0.00	
6125.50†	23.131	70.739	5735.07	-127.65	655.10	1874.71	2754718.54	1468441.96	40.6159161	-106.3835192	0.00	
6225.50†	23.131	70.739	5827.03	-130.17	668.05	1911.79	2754755.75	1468454.55	40.6159517	-106.3833856	0.00	
6325.50†	23.131	70.739	5918.99	-132.70	681.01	1948.88	2754792.97	1468467.14	40.6159873	-106.3832520	0.00	
6425.50†	23.131	70.739	6010.96	-135.22	693.97	1985.96	2754830.18	1468479.72	40.6160228	-106.3831185	0.00	
6525.50†	23.131	70.739	6102.92	-137.75	706.93	2023.04	2754867.39	1468492.31	40.6160584	-106.3829849	0.00	
6625.50†	23.131	70.739	6194.88	-140.27	719.89	2060.13	2754904.60	1468504.89	40.6160939	-106.3828513	0.00	
6725.50†	23.131	70.739	6286.84	-142.80	732.85	2097.21	2754941.81	1468517.48	40.6161295	-106.3827177	0.00	
6825.50†	23.131	70.739	6378.80	-145.32	745.81	2134.30	2754979.03	1468530.06	40.6161651	-106.3825841	0.00	
6925.50†	23.131	70.739	6470.76	-147.85	758.77	2171.38	2755016.24	1468542.65	40.6162006	-106.3824506	0.00	
7025.50†	23.131	70.739	6562.72	-150.37	771.72	2208.47	2755053.45	1468555.23	40.6162362	-106.3823170	0.00	
7125.50†	23.131	70.739	6654.68	-152.90	784.68	2245.55	2755090.66	1468567.82	40.6162718	-106.3821834	0.00	
7225.50†	23.131	70.739	6746.64	-155.42	797.64	2282.64	2755127.87	1468580.41	40.6163073	-106.3820498	0.00	
7325.50†	23.131	70.739	6838.60	-157.95	810.60	2319.72	2755165.08	1468592.99	40.6163429	-106.3819162	0.00	
7425.50†	23.131	70.739	6930.56	-160.47	823.56	2356.81	2755202.30	1468605.58	40.6163784	-106.3817827	0.00	
7525.50†	23.131	70.739	7022.52	-163.00	836.52	2393.89	2755239.51	1468618.16	40.6164140	-106.3816491	0.00	
7625.50†	23.131	70.739	7114.49	-165.52	849.48	2430.98	2755276.72	1468630.75	40.6164495	-106.3815155	0.00	
7725.50†	23.131	70.739	7206.45	-168.05	862.44	2468.06	2755313.93	1468643.33	40.6164851	-106.3813819	0.00	
7825.50†	23.131	70.739	7298.41	-170.57	875.39	2505.15	2755351.14	1468655.92	40.6165207	-106.3812483	0.00	
7925.50†	23.131	70.739	7390.37	-173.10	888.35	2542.23	2755388.36	1468668.50	40.6165562	-106.3811148	0.00	
8025.50†	23.131	70.739	7482.33	-175.62	901.31	2579.31	2755425.57	1468681.09	40.6165918	-106.3809812	0.00	
8125.50†	23.131	70.739	7574.29	-178.15	914.27	2616.40	2755462.78	1468693.68	40.6166273	-106.3808476	0.00	
8225.50†	23.131	70.739	7666.25	-180.67	927.23	2653.48	2755499.99	1468706.26	40.6166629	-106.3807140	0.00	
8325.50†	23.131	70.739	7758.21	-183.20	940.19	2690.57	2755537.20	1468718.85	40.6166985	-106.3805804	0.00	
8425.50†	23.131	70.739	7850.17	-185.72	953.15	2727.65	2755574.42	1468731.43	40.6167340	-106.3804468	0.00	
8525.50†	23.131	70.739	7942.13	-188.25	966.11	2764.74	2755611.63	1468744.02	40.6167696	-106.3803133	0.00	
8625.50†	23.131	70.739	8034.09	-190.77	979.07	2801.82	2755648.84	1468756.60	40.6168051	-106.3801797	0.00	



# Planned Wellpath Report

JANET 0780 12S-4H9 (REV-D.0) PWP

Page 4 of 8



REFERENCE WELLPATH IDENTIFICATION			
Operator	FULCRUM ENERGY OPERATING	Well	JANET 0780 12S-4H9
Field	JACKSON COUNTY (NAD83/TN)	API	05-057-06639
Facility	SEC.04-T07N-R80W	Wellbore	JANET 0780 12S-4H9 PWB
Slot	SLOT#06 JANET 0780 12S-4H9 (377'FNL & 819'FEL,SEC.04)		

WELLPATH DATA (230 stations) † = interpolated, ‡ = extrapolated station												
MD [ft]	Inclination [°]	Azimuth [°]	TVD [ft]	Vert Sect [ft]	North [ft]	East [ft]	Grid East [US ft]	Grid North [US ft]	Latitude	Longitude	DLS [°/100ft]	Comments
8673.20	23.131	70.739	8077.96	-191.98	985.25	2819.51	2755666.59	1468762.61	40.6168221	-106.3801160	0.00	KOP
8725.50†	22.165	81.326	8126.25	-191.45	990.13	2838.97	2755686.10	1468767.29	40.6168355	-106.3800459	8.00	
8825.50†	22.367	102.537	8218.94	-180.20	988.84	2876.25	2755723.36	1468765.63	40.6168319	-106.3799116	8.00	
8925.50†	25.119	121.294	8310.60	-155.71	973.66	2913.02	2755759.98	1468750.08	40.6167903	-106.3797791	8.00	
9025.50†	29.718	135.584	8399.44	-118.44	944.88	2948.56	2755795.23	1468720.95	40.6167113	-106.3796511	8.00	
9125.50†	35.451	145.991	8483.73	-69.14	903.07	2982.19	2755828.43	1468678.80	40.6165965	-106.3795300	8.00	
9225.50†	41.850	153.705	8561.83	-8.75	849.03	3013.24	2755858.93	1468624.46	40.6164482	-106.3794182	8.00	
9325.50†	48.649	159.658	8632.22	61.54	783.83	3041.11	2755886.15	1468558.98	40.6162692	-106.3793179	8.00	
9425.50†	55.695	164.463	8693.54	140.38	708.72	3065.26	2755909.54	1468483.63	40.6160630	-106.3792309	8.00	
9525.50†	62.899	168.514	8744.58	226.22	625.17	3085.22	2755928.66	1468399.89	40.6158337	-106.3791591	8.00	
9625.50†	70.206	172.069	8784.35	317.39	534.81	3100.60	2755943.13	1468309.38	40.6155856	-106.3791037	8.00	
9725.50†	77.576	175.309	8812.09	412.12	439.39	3111.10	2755952.67	1468213.87	40.6153237	-106.3790659	8.00	
9825.50†	84.983	178.370	8827.24	508.57	340.78	3116.52	2755957.10	1468115.21	40.6150531	-106.3790465	8.00	
9893.11	90.000	180.394	8830.20 <sup>1</sup>	573.80	273.27	3117.24	2755957.15	1468047.69	40.6148678	-106.3790439	8.00	LP
9925.50†	90.000	180.394	8830.20	604.94	240.88	3117.02	2755956.60	1468015.30	40.6147788	-106.3790447	0.00	
10025.50†	90.000	180.394	8830.20	701.08	140.88	3116.33	2755954.91	1467915.32	40.6145044	-106.3790472	0.00	
10125.50†	90.000	180.394	8830.20	797.22	40.88	3115.64	2755953.22	1467815.34	40.6142299	-106.3790497	0.00	
10225.50†	90.000	180.394	8830.20	893.36	-59.12	3114.96	2755951.53	1467715.35	40.6139554	-106.3790523	0.00	
10325.50†	90.000	180.394	8830.20	989.50	-159.12	3114.27	2755949.84	1467615.37	40.6136810	-106.3790548	0.00	
10425.50†	90.000	180.394	8830.20	1085.65	-259.11	3113.58	2755948.15	1467515.39	40.6134065	-106.3790573	0.00	
10516.90	90.000	180.394	8830.20 <sup>2</sup>	1173.52	-350.51	3112.95	2755946.60	1467424.00	40.6131556	-106.3790596	0.00	WP1
10525.50†	89.896	180.531	8830.21	1181.78	-359.11	3112.88	2755946.44	1467415.41	40.6131320	-106.3790599	2.00	
10552.36	89.573	180.960	8830.33	1207.56	-385.97	3112.53	2755945.83	1467388.55	40.6130583	-106.3790611	2.00	3D Arc (J)
10625.50†	89.573	180.960	8830.88	1277.67	-459.10	3111.31	2755943.87	1467315.44	40.6128576	-106.3790656	0.00	
10725.50†	89.573	180.960	8831.62	1373.53	-559.08	3109.63	2755941.19	1467215.48	40.6125831	-106.3790717	0.00	
10825.50†	89.573	180.960	8832.37	1469.40	-659.06	3107.96	2755938.51	1467115.53	40.6123087	-106.3790777	0.00	
10925.50†	89.573	180.960	8833.11	1565.26	-759.05	3106.28	2755935.83	1467015.57	40.6120343	-106.3790838	0.00	
11025.50†	89.573	180.960	8833.86	1661.12	-859.03	3104.61	2755933.15	1466915.61	40.6117598	-106.3790899	0.00	
11125.50†	89.573	180.960	8834.60	1756.98	-959.01	3102.93	2755930.47	1466815.65	40.6114854	-106.3790960	0.00	
11225.50†	89.573	180.960	8835.35	1852.84	-1058.99	3101.26	2755927.79	1466715.69	40.6112110	-106.3791021	0.00	
11325.50†	89.573	180.960	8836.09	1948.70	-1158.98	3099.58	2755925.11	1466615.73	40.6109365	-106.3791081	0.00	
11425.50†	89.573	180.960	8836.84	2044.56	-1258.96	3097.91	2755922.43	1466515.77	40.6106621	-106.3791142	0.00	
11525.50†	89.573	180.960	8837.58	2140.43	-1358.94	3096.23	2755919.75	1466415.81	40.6103877	-106.3791203	0.00	
11625.50†	89.573	180.960	8838.33	2236.29	-1458.93	3094.55	2755917.07	1466315.86	40.6101132	-106.3791264	0.00	
11725.50†	89.573	180.960	8839.07	2332.15	-1558.91	3092.88	2755914.39	1466215.90	40.6098388	-106.3791325	0.00	
11825.50†	89.573	180.960	8839.82	2428.01	-1658.89	3091.20	2755911.72	1466115.94	40.6095644	-106.3791385	0.00	
11925.50†	89.573	180.960	8840.57	2523.87	-1758.88	3089.53	2755909.04	1466015.98	40.6092899	-106.3791446	0.00	
12025.50†	89.573	180.960	8841.31	2619.73	-1858.86	3087.85	2755906.36	1465916.02	40.6090155	-106.3791507	0.00	
12125.50†	89.573	180.960	8842.06	2715.59	-1958.84	3086.18	2755903.68	1465816.06	40.6087411	-106.3791568	0.00	
12158.28	89.573	180.960	8842.30 <sup>3</sup>	2747.01	-1991.61	3085.63	2755902.80	1465783.30	40.6086511	-106.3791588	0.00	WP2
12225.50†	90.850	181.380	8842.05	2811.38	-2058.82	3084.25	2755900.75	1465716.11	40.6084667	-106.3791637	2.00	
12277.10	91.831	181.703	8840.84	2860.69	-2110.39	3082.87	2755898.85	1465664.56	40.6083251	-106.3791688	2.00	End of 3D Arc (J)
12325.50†	91.831	181.703	8839.30	2906.88	-2158.74	3081.43	2755896.92	1465616.23	40.6081924	-106.3791740	0.00	
12425.50†	91.831	181.703	8836.10	3002.32	-2258.65	3078.46	2755892.95	1465516.36	40.6079182	-106.3791847	0.00	
12525.50†	91.831	181.703	8832.91	3097.75	-2358.55	3075.49	2755888.98	1465416.49	40.6076440	-106.3791954	0.00	



# Planned Wellpath Report

JANET 0780 12S-4H9 (REV-D.0) PWP

Page 5 of 8



REFERENCE WELLPATH IDENTIFICATION					
Operator	FULCRUM ENERGY OPERATING			Well	JANET 0780 12S-4H9
Field	JACKSON COUNTY (NAD83/TN)			API	05-057-06639
Facility	SEC.04-T07N-R80W			Wellbore	JANET 0780 12S-4H9 PWB
Slot	SLOT#06 JANET 0780 12S-4H9 (377'FNL & 819'FEL,SEC.04)				

WELLPATH DATA (230 stations) † = interpolated, ‡ = extrapolated station												
MD [ft]	Inclination [°]	Azimuth [°]	TVD [ft]	Vert Sect [ft]	North [ft]	East [ft]	Grid East [US ft]	Grid North [US ft]	Latitude	Longitude	DLS [°/100ft]	Comments
12625.50†	91.831	181.703	8829.72	3193.19	-2458.46	3072.52	2755885.01	1465316.62	40.6073697	-106.3792062	0.00	
12725.50†	91.831	181.703	8826.52	3288.63	-2558.36	3069.55	2755881.03	1465216.76	40.6070955	-106.3792169	0.00	
12825.50†	91.831	181.703	8823.33	3384.07	-2658.27	3066.58	2755877.06	1465116.89	40.6068213	-106.3792277	0.00	
12925.50†	91.831	181.703	8820.13	3479.51	-2758.17	3063.61	2755873.09	1465017.02	40.6065471	-106.3792384	0.00	
13025.50†	91.831	181.703	8816.94	3574.94	-2858.08	3060.64	2755869.11	1464917.15	40.6062729	-106.3792492	0.00	
13125.50†	91.831	181.703	8813.74	3670.38	-2957.98	3057.67	2755865.14	1464817.29	40.6059986	-106.3792599	0.00	
13225.50†	91.831	181.703	8810.55	3765.82	-3057.89	3054.70	2755861.17	1464717.42	40.6057244	-106.3792706	0.00	
13325.50†	91.831	181.703	8807.36	3861.26	-3157.79	3051.73	2755857.19	1464617.55	40.6054502	-106.3792814	0.00	
13425.50†	91.831	181.703	8804.16	3956.70	-3257.70	3048.76	2755853.22	1464517.68	40.6051760	-106.3792921	0.00	
13525.50†	91.831	181.703	8800.97	4052.14	-3357.60	3045.79	2755849.25	1464417.82	40.6049018	-106.3793029	0.00	
13625.50†	91.831	181.703	8797.77	4147.57	-3457.50	3042.82	2755845.28	1464317.95	40.6046276	-106.3793136	0.00	
13725.50†	91.831	181.703	8794.58	4243.01	-3557.41	3039.85	2755841.30	1464218.08	40.6043533	-106.3793243	0.00	
13825.50†	91.831	181.703	8791.38	4338.45	-3657.31	3036.88	2755837.33	1464118.21	40.6040791	-106.3793351	0.00	
13925.50†	91.831	181.703	8788.19	4433.89	-3757.22	3033.91	2755833.36	1464018.35	40.6038049	-106.3793458	0.00	
14025.50†	91.831	181.703	8784.99	4529.33	-3857.12	3030.93	2755829.38	1463918.48	40.6035307	-106.3793566	0.00	
14125.50†	91.831	181.703	8781.80	4624.77	-3957.03	3027.96	2755825.41	1463818.61	40.6032565	-106.3793673	0.00	
14225.50†	91.831	181.703	8778.61	4720.20	-4056.93	3024.99	2755821.44	1463718.74	40.6029822	-106.3793781	0.00	
14325.50†	91.831	181.703	8775.41	4815.64	-4156.84	3022.02	2755817.46	1463618.88	40.6027080	-106.3793888	0.00	
14425.50†	91.831	181.703	8772.22	4911.08	-4256.74	3019.05	2755813.49	1463519.01	40.6024338	-106.3793995	0.00	
14525.50†	91.831	181.703	8769.02	5006.52	-4356.65	3016.08	2755809.52	1463419.14	40.6021596	-106.3794103	0.00	
14625.50†	91.831	181.703	8765.83	5101.96	-4456.55	3013.11	2755805.55	1463319.27	40.6018854	-106.3794210	0.00	
14725.50†	91.831	181.703	8762.63	5197.40	-4556.46	3010.14	2755801.57	1463219.41	40.6016112	-106.3794318	0.00	
14825.50†	91.831	181.703	8759.44	5292.83	-4656.36	3007.17	2755797.60	1463119.54	40.6013369	-106.3794425	0.00	
14925.50†	91.831	181.703	8756.25	5388.27	-4756.27	3004.20	2755793.63	1463019.67	40.6010627	-106.3794532	0.00	
15025.50†	91.831	181.703	8753.05	5483.71	-4856.17	3001.23	2755789.65	1462919.80	40.6007885	-106.3794640	0.00	
15125.50†	91.831	181.703	8749.86	5579.15	-4956.08	2998.26	2755785.68	1462819.94	40.6005143	-106.3794747	0.00	
15205.54	91.831	181.703	8747.30	5655.54	-5036.04	2995.88	2755782.50	1462740.00	40.6002948	-106.3794833	0.00	End of Tangent (J)
15225.50†	92.220	181.619	8746.59	5674.59	-5055.98	2995.31	2755781.72	1462720.07	40.6002401	-106.3794854	2.00	
15319.94	94.063	181.220	8741.42	5764.76	-5150.24	2992.97	2755778.44	1462625.84	40.5999813	-106.3794939	2.00	End of 3D Arc
15325.50†	94.173	181.210	8741.02	5770.07	-5155.79	2992.85	2755778.27	1462620.29	40.5999661	-106.3794943	2.00	
15425.50†	96.165	181.025	8732.01	5865.47	-5255.36	2990.91	2755775.33	1462520.75	40.5996928	-106.3795013	2.00	
15525.50†	98.156	180.839	8719.55	5960.59	-5354.56	2989.30	2755772.71	1462421.57	40.5994205	-106.3795072	2.00	
15625.50†	100.148	180.652	8703.64	6055.33	-5453.27	2988.01	2755770.44	1462322.88	40.5991496	-106.3795118	2.00	
15725.50†	102.139	180.462	8684.32	6149.58	-5551.38	2987.06	2755768.50	1462224.79	40.5988803	-106.3795153	2.00	
15825.50†	104.130	180.269	8661.59	6243.21	-5648.76	2986.44	2755766.90	1462127.43	40.5986130	-106.3795176	2.00	
15921.80	106.048	180.080	8636.53	6332.69	-5741.73	2986.15	2755765.68	1462034.47	40.5983578	-106.3795187	2.00	3D Arc (XS)
15925.50†	106.048	180.080	8635.50	6336.12	-5745.29	2986.15	2755765.64	1462030.91	40.5983481	-106.3795187	0.00	
16025.50†	106.048	180.080	8607.86	6428.66	-5841.39	2986.01	2755764.54	1461934.81	40.5980843	-106.3795192	0.00	
16125.50†	106.048	180.080	8580.22	6521.20	-5937.49	2985.88	2755763.44	1461838.72	40.5978205	-106.3795197	0.00	
16225.50†	106.048	180.080	8552.57	6613.73	-6033.60	2985.74	2755762.35	1461742.62	40.5975567	-106.3795203	0.00	
16325.50†	106.048	180.080	8524.93	6706.27	-6129.70	2985.61	2755761.25	1461646.53	40.5972929	-106.3795208	0.00	
16425.50†	106.048	180.080	8497.29	6798.81	-6225.80	2985.48	2755760.15	1461550.43	40.5970291	-106.3795213	0.00	
16525.50†	106.048	180.080	8469.64	6891.35	-6321.91	2985.34	2755759.05	1461454.34	40.5967653	-106.3795218	0.00	
16625.50†	106.048	180.080	8442.00	6983.89	-6418.01	2985.21	2755757.95	1461358.25	40.5965016	-106.3795224	0.00	
16725.50†	106.048	180.080	8414.36	7076.42	-6514.11	2985.07	2755756.85	1461262.15	40.5962378	-106.3795229	0.00	





# Planned Wellpath Report

JANET 0780 12S-4H9 (REV-D.0) PWP

Page 6 of 8



REFERENCE WELLPATH IDENTIFICATION			
Operator	FULCRUM ENERGY OPERATING	Well	JANET 0780 12S-4H9
Field	JACKSON COUNTY (NAD83/TN)	API	05-057-06639
Facility	SEC.04-T07N-R80W	Wellbore	JANET 0780 12S-4H9 PWB
Slot	SLOT#06 JANET 0780 12S-4H9 (377'FNL & 819'FEL,SEC.04)		

WELLPATH DATA (230 stations) † = interpolated, ‡ = extrapolated station												
MD [ft]	Inclination [°]	Azimuth [°]	TVD [ft]	Vert Sect [ft]	North [ft]	East [ft]	Grid East [US ft]	Grid North [US ft]	Latitude	Longitude	DLS [°/100ft]	Comments
16825.50†	106.048	180.080	8386.71	7168.96	-6610.22	2984.94	2755755.75	1461166.06	40.5959740	-106.3795234	0.00	
16841.57	106.048	180.080	8382.27	7183.83	-6625.66	2984.92	2755755.57	1461150.61	40.5959316	-106.3795235	0.00	End of Tangent (XS)
16925.50†	104.382	180.294	8360.24	7261.77	-6706.64	2984.65	2755754.50	1461069.64	40.5957093	-106.3795245	2.00	
17025.50†	102.397	180.544	8337.09	7355.28	-6803.92	2983.94	2755752.81	1460972.38	40.5954423	-106.3795271	2.00	
17125.50†	100.411	180.791	8317.32	7449.39	-6901.93	2982.80	2755750.68	1460874.38	40.5951733	-106.3795313	2.00	
17192.98	99.071	180.956	8305.90‡	7513.17	-6968.43	2981.78	2755749.00	1460807.90	40.5949908	-106.3795349	2.00	WP4
17225.50†	99.071	180.956	8300.77	7543.96	-7000.54	2981.25	2755748.14	1460775.80	40.5949026	-106.3795369	0.00	
17325.50†	99.071	180.956	8285.01	7638.63	-7099.27	2979.60	2755745.50	1460677.09	40.5946316	-106.3795429	0.00	
17425.50†	99.071	180.956	8269.24	7733.29	-7198.01	2977.95	2755742.87	1460578.38	40.5943606	-106.3795488	0.00	
17525.50†	99.071	180.956	8253.47	7827.96	-7296.75	2976.31	2755740.23	1460479.66	40.5940896	-106.3795548	0.00	
17625.50†	99.071	180.956	8237.71	7922.63	-7395.48	2974.66	2755737.59	1460380.95	40.5938186	-106.3795608	0.00	
17725.50†	99.071	180.956	8221.94	8017.30	-7494.22	2973.01	2755734.95	1460282.24	40.5935476	-106.3795667	0.00	
17825.50†	99.071	180.956	8206.17	8111.96	-7592.95	2971.37	2755732.31	1460183.53	40.5932766	-106.3795727	0.00	
17837.38	99.071	180.956	8204.30‡	8123.21	-7604.69	2971.17	2755732.00	1460171.80	40.5932444	-106.3795734	0.00	WP5
17925.50†	101.683	180.540	8188.43	8206.39	-7691.35	2970.04	2755730.00	1460085.16	40.5930065	-106.3795775	3.00	
18025.50†	104.646	180.059	8165.66	8300.03	-7788.71	2969.53	2755728.51	1459987.81	40.5927393	-106.3795794	3.00	
18125.50†	107.608	179.564	8137.88	8392.64	-7884.76	2969.84	2755727.86	1459891.76	40.5924756	-106.3795783	3.00	
18162.87	108.715	179.375	8126.23	8426.93	-7920.27	2970.17	2755727.83	1459856.25	40.5923782	-106.3795772	3.00	3D Arc (J)
18225.50†	108.715	179.375	8106.14	8484.24	-7979.58	2970.81	2755727.88	1459796.94	40.5922153	-106.3795749	0.00	
18325.50†	108.715	179.375	8074.05	8575.75	-8074.29	2971.85	2755727.96	1459702.23	40.5919554	-106.3795712	0.00	
18372.41	108.715	179.375	8059.00‡	8618.67	-8118.71	2972.33	2755728.00	1459657.80	40.5918335	-106.3795695	0.00	WP6
18425.50†	107.129	179.530	8042.66	8667.46	-8169.22	2972.81	2755727.97	1459607.29	40.5916948	-106.3795678	3.00	
18525.50†	104.142	179.815	8015.71	8760.36	-8265.51	2973.36	2755727.56	1459511.00	40.5914305	-106.3795658	3.00	
18625.50†	101.154	180.092	7993.82	8854.36	-8363.07	2973.44	2755726.65	1459413.45	40.5911627	-106.3795656	3.00	
18725.50†	98.166	180.364	7977.04	8949.20	-8461.64	2973.05	2755725.27	1459314.89	40.5908922	-106.3795670	3.00	
18825.50†	95.178	180.631	7965.43	9044.63	-8560.95	2972.18	2755723.41	1459215.60	40.5906196	-106.3795702	3.00	
18880.90	93.522	180.779	7961.22	9097.65	-8616.18	2971.50	2755722.18	1459160.38	40.5904680	-106.3795727	3.00	3D Arc (J)
18925.50†	93.522	180.779	7958.48	9140.37	-8660.70	2970.90	2755721.13	1459115.87	40.5903458	-106.3795749	0.00	
19025.50†	93.522	180.779	7952.34	9236.14	-8760.50	2969.54	2755718.77	1459016.09	40.5900719	-106.3795798	0.00	
19125.50†	93.522	180.779	7946.20	9331.91	-8860.30	2968.19	2755716.41	1458916.31	40.5897979	-106.3795847	0.00	
19225.50†	93.522	180.779	7940.05	9427.69	-8960.10	2966.83	2755714.05	1458816.53	40.5895240	-106.3795896	0.00	
19325.50†	93.522	180.779	7933.91	9523.46	-9059.90	2965.47	2755711.69	1458716.75	40.5892501	-106.3795946	0.00	
19425.50†	93.522	180.779	7927.76	9619.23	-9159.71	2964.12	2755709.34	1458616.97	40.5889761	-106.3795995	0.00	
19525.50†	93.522	180.779	7921.62	9715.00	-9259.51	2962.76	2755706.98	1458517.19	40.5887022	-106.3796044	0.00	
19625.50†	93.522	180.779	7915.48	9810.78	-9359.31	2961.40	2755704.62	1458417.41	40.5884282	-106.3796094	0.00	
19725.50†	93.522	180.779	7909.33	9906.55	-9459.11	2960.05	2755702.26	1458317.63	40.5881543	-106.3796143	0.00	
19825.50†	93.522	180.779	7903.19	10002.32	-9558.91	2958.69	2755699.90	1458217.85	40.5878804	-106.3796192	0.00	
19925.50†	93.522	180.779	7897.04	10098.09	-9658.71	2957.34	2755697.55	1458118.06	40.5876064	-106.3796241	0.00	
19957.13	93.522	180.779	7895.10‡	10128.39	-9690.29	2956.91	2755696.80	1458086.50	40.5875198	-106.3796257	0.00	WP7
20025.50†	94.889	180.832	7890.09	10193.80	-9758.46	2955.95	2755695.16	1458018.34	40.5873327	-106.3796292	2.00	
20125.50†	96.887	180.912	7879.83	10289.20	-9857.92	2954.44	2755692.65	1457918.91	40.5870597	-106.3796347	2.00	
20214.59	98.668	180.983	7867.77	10373.82	-9946.17	2952.98	2755690.30	1457830.68	40.5868174	-106.3796400	2.00	3D Arc (J)
20225.50†	98.668	180.983	7866.13	10384.16	-9956.95	2952.79	2755690.01	1457819.89	40.5867878	-106.3796406	0.00	
20325.50†	98.668	180.983	7851.06	10478.92	-10055.80	2951.10	2755687.32	1457721.07	40.5865165	-106.3796468	0.00	
20425.50†	98.668	180.983	7835.99	10573.68	-10154.64	2949.40	2755684.63	1457622.26	40.5862452	-106.3796529	0.00	



# Planned Wellpath Report

JANET 0780 12S-4H9 (REV-D.0) PWP

Page 7 of 8



## REFERENCE WELLPATH IDENTIFICATION

Operator	FULCRUM ENERGY OPERATING	Well	JANET 0780 12S-4H9
Field	JACKSON COUNTY (NAD83/TN)	API	05-057-06639
Facility	SEC.04-T07N-R80W	Wellbore	JANET 0780 12S-4H9 PWB
Slot	SLOT#06 JANET 0780 12S-4H9 (377'FNL & 819'FEL,SEC.04)		

## WELLPATH DATA (230 stations) † = interpolated, ‡ = extrapolated station

MD [ft]	Inclination [°]	Azimuth [°]	TVD [ft]	Vert Sect [ft]	North [ft]	East [ft]	Grid East [US ft]	Grid North [US ft]	Latitude	Longitude	DLS [°/100ft]	Comments
20525.50†	98.668	180.983	7820.92	10668.43	-10253.48	2947.71	2755681.94	1457523.44	40.5859739	-106.3796591	0.00	
20625.50†	98.668	180.983	7805.85	10763.19	-10352.33	2946.01	2755679.26	1457424.62	40.5857026	-106.3796652	0.00	
20725.50†	98.668	180.983	7790.78	10857.95	-10451.17	2944.31	2755676.57	1457325.80	40.5854313	-106.3796714	0.00	
20825.50†	98.668	180.983	7775.71	10952.71	-10550.01	2942.62	2755673.88	1457226.98	40.5851600	-106.3796775	0.00	
20831.53	98.668	180.983	7774.80‡	10958.42	-10555.98	2942.52	2755673.72	1457221.02	40.5851436	-106.3796779	0.00	BHL

## HOLE & CASING SECTIONS

- Ref Wellbore: JANET 0780 12S-4H9 PWB Ref Wellpath: JANET 0780 12S-4H9 (REV-D.0) PWP

String/Diameter	Start MD [ft]	End MD [ft]	Interval [ft]	Start TVD [ft]	End TVD [ft]	Start N/S [ft]	Start E/W [ft]	End N/S [ft]	End E/W [ft]
16in Conductor	25.50	120.00	94.50	25.50	120.00	0.00	0.00	0.00	0.00
9.625in Casing Surface	25.50	5118.78	5093.28	25.50	4809.28	0.00	0.00	524.64	1501.37
5.5in Casing Production	25.50	20831.53	20806.03	25.50	7774.80	0.00	0.00	-10555.98	2942.52

## TARGETS

Name	MD [ft]	TVD [ft]	North [ft]	East [ft]	Grid East [US ft]	Grid North [US ft]	Latitude	Longitude	Shape
SEC.04-T07N-R80W	N/A	6.50	419.94	478.83	2753320.41	1468220.84	40.6152709	-106.3885471	polygon
	2D Polygon: dimensions not calculated								
SEC.05-T07N-R80W	N/A	6.50	409.94	478.83	2753320.31	1468210.84	40.6152434	-106.3885471	polygon
	2D Polygon: dimensions not calculated								
SEC.09-T07N-R80W	N/A	6.50	398.99	478.02	2753319.39	1468199.90	40.6152134	-106.3885500	polygon
	2D Polygon: dimensions not calculated								
SEC.33-T08N-R80W	N/A	6.50	429.94	478.83	2753320.51	1468230.84	40.6152983	-106.3885471	polygon
	2D Polygon: dimensions not calculated								
JANET 0780 12S-4H9 BHL Rev-2 (122'FSL & 2315'FWL,SEC.09)	N/A	7774.80	-10533.69	2942.87	2755674.30	1457243.30	40.5852048	-106.3796766	point
9) JANET 0780 12S-4H9 BHL Rev-3 (100'FSL & 2316'FWL,SEC.09)	20831.53	7774.80	-10555.98	2942.52	2755673.72	1457221.02	40.5851436	-106.3796779	point
8) JANET 0780 12S-4H9 WP7	19957.13	7895.10	-9690.29	2956.91	2755696.80	1458086.50	40.5875198	-106.3796257	point
7) JANET 0780 12S-4H9 WP6 rev-2	N/A	8059.00	-8118.60	2983.23	2755738.90	1459657.80	40.5918338	-106.3795302	point
6) JANET 0780 12S-4H9 WP5	N/A	8204.30	-7604.48	2991.77	2755752.60	1460171.80	40.5932449	-106.3794993	point
5) JANET 0780 12S-4H9 WP4	N/A	8305.90	-6968.22	3002.38	2755769.60	1460807.90	40.5949913	-106.3794608	point
4) JANET 0780 12S-4H9 Angle Point	N/A	8743.40	-5150.24	2992.97	2755778.44	1462625.84	40.5999813	-106.3794939	point
JANET 0780 12S-4H9 LP Rev-2 (100'FNL & 2285'FWL,SEC.04)	N/A	8830.20	271.91	3117.27	2755957.16	1468046.33	40.6148640	-106.3790438	point
1) JANET 0780 12S-4H9 LP Rev-3 (100'FNL & 2288'FWL,SEC.04)	9893.11	8830.20	273.27	3117.24	2755957.15	1468047.69	40.6148678	-106.3790439	point

## TARGETS

Name	MD [ft]	TVD [ft]	North [ft]	East [ft]	Grid East [US ft]	Grid North [US ft]	Latitude	Longitude	Shape
------	---------	----------	------------	-----------	-------------------	--------------------	----------	-----------	-------



TARGETS									
Name	MD [ft]	TVD [ft]	North [ft]	East [ft]	Grid East [US ft]	Grid North [US ft]	Latitude	Longitude	Shape
2) JANET 0780 12S-4H9 WP1	10516.90	8830.20	-350.51	3112.95	2755946.60	1467424.00	40.6131556	-106.3790596	point
3) JANET 0780 12S-4H9 WP2	12158.28	8842.30	-1991.61	3085.63	2755902.80	1465783.30	40.6086511	-106.3791588	point
JANET 0780 S5 Hardlines (300'FWL & 100'FSL)	N/A	9000.00	398.99	478.02	2753319.39	1468199.90	40.6152134	-106.3885500	polygon
2D Polygon: dimensions not calculated									

SURVEY PROGRAM - Ref Wellbore: JANET 0780 12S-4H9 PWB					Ref Wellpath: JANET 0780 12S-4H9 (REV-D.0) PWP				
Start MD [ft]	End MD [ft]	Positional Uncertainty Model			Log Name/Comment		Wellbore		
25.50	5118.78	OWSG MWD rev2 - Standard					JANET 0780 12S-4H9 PWB		
5118.78	20831.64	BH AutoTrak Curve/eXpress (2019) (HRGM, Short spacing)					JANET 0780 12S-4H9 PWB		



# Planned Wellpath Report

JANET 0780 12S-4H9 (REV-D.0) PWP

Page 8 of 8



## REFERENCE WELLPATH IDENTIFICATION

Operator	FULCRUM ENERGY OPERATING	Well	JANET 0780 12S-4H9
Field	JACKSON COUNTY (NAD83/TN)	API	05-057-06639
Facility	SEC.04-T07N-R80W	Wellbore	JANET 0780 12S-4H9 PWB
Slot	SLOT#06 JANET 0780 12S-4H9 (377'FNL & 819'FEL,SEC.04)		

## DESIGN COMMENTS

MD [ft]	Inclination [°]	Azimuth [°]	TVD [ft]	Comment
25.50	0.000	70.739	25.50	Tie On
500.00	0.000	70.739	500.00	End of Tangent
1656.55	23.131	70.739	1625.39	Build (XS)
8673.20	23.131	70.739	8077.96	KOP
9893.11	90.000	180.394	8830.20	LP
10516.90	90.000	180.394	8830.20	WP1
10552.36	89.573	180.960	8830.33	3D Arc (J)
12158.28	89.573	180.960	8842.30	WP2
12277.10	91.831	181.703	8840.84	End of 3D Arc (J)
15205.54	91.831	181.703	8747.30	End of Tangent (J)
15319.94	94.063	181.220	8741.42	End of 3D Arc
15921.80	106.048	180.080	8636.53	3D Arc (XS)
16841.57	106.048	180.080	8382.27	End of Tangent (XS)
17192.98	99.071	180.956	8305.90	WP4
17837.38	99.071	180.956	8204.30	WP5
18162.87	108.715	179.375	8126.23	3D Arc (J)
18372.41	108.715	179.375	8059.00	WP6
18880.90	93.522	180.779	7961.22	3D Arc (J)
19957.13	93.522	180.779	7895.10	WP7
20214.59	98.668	180.983	7867.77	3D Arc (J)
20831.53	98.668	180.983	7774.80	BHL