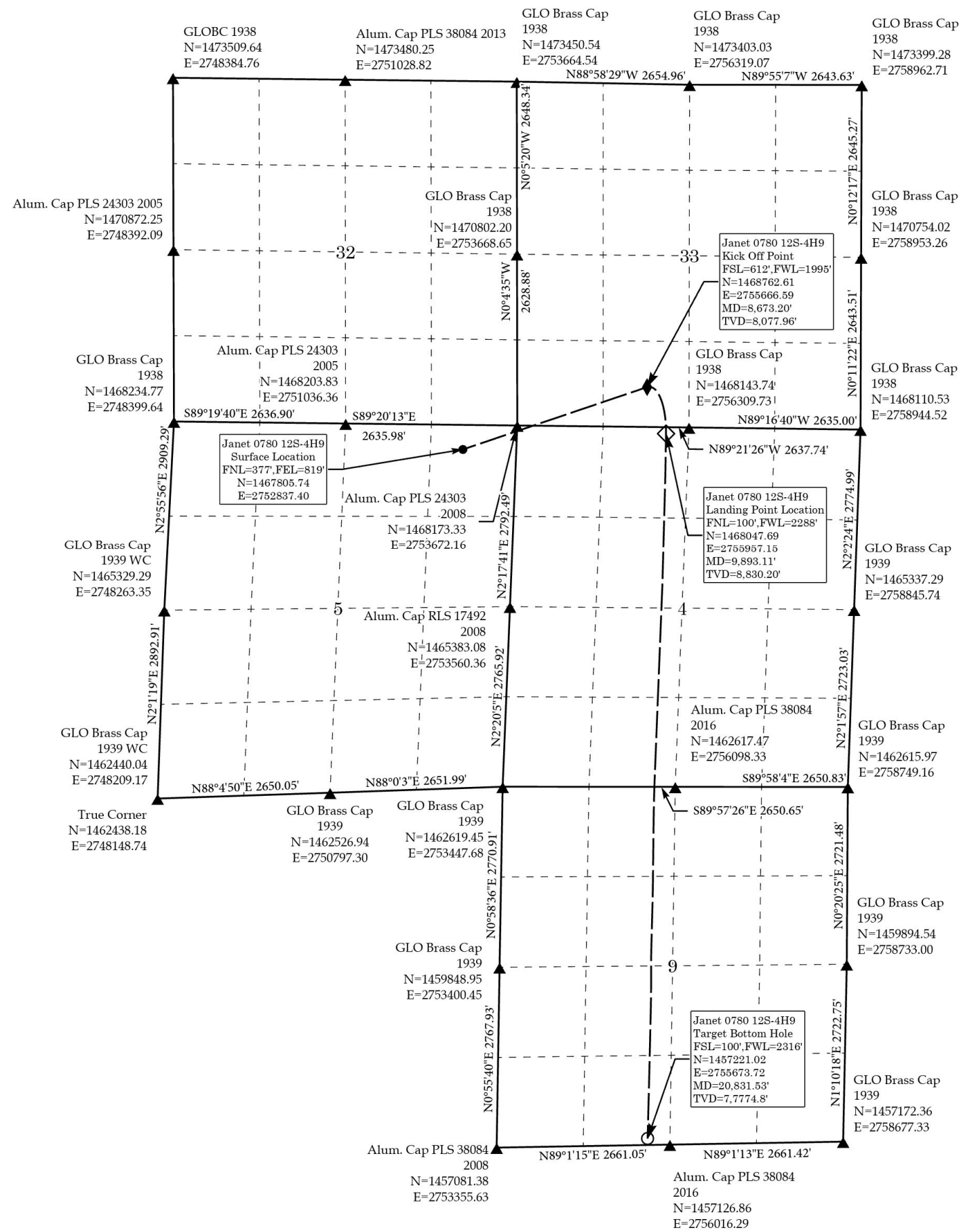


Janet 0780 12S-4H9

As shown in NE¼NE¼ Sec. 5, NW¼NW¼, E½W½ Sec. 4,  
E½W½ Sec. 9 T7N R80W 6<sup>th</sup> P.M. &  
S½SW¼ Sec. 33 T8N R80W 6<sup>th</sup> P.M.  
Jackson County, Colorado



**NAD 83 Surface Location**  
Lat=40.614118°N  
Long=106.390272°W  
**STATE PLANE NAD83(CO. NORTH)**  
N=1467805.74  
E=2752837.40  
**Elev. on Graded Pad Surface**  
8,097.95'

**NAD 83 Kick Off Point**  
Lat=40.616822°N  
Long=106.380116°W  
**STATE PLANE NAD83(CO. NORTH)**  
N=1468762.61  
E=2755666.59

**NAD 83 Top of Productive Zone**  
Same as Landing Point Location  
**STATE PLANE NAD83(CO. NORTH)**  
Same as Landing Point Location

**NAD 83 Landing Point Location**  
Lat=40.614868°N  
Long=106.379044°W  
**STATE PLANE NAD83(CO. NORTH)**  
N=1468047.69  
E=2755957.15

**NAD 83 Target Bottom Hole**  
Lat=40.585144°N  
Long=106.379678°W  
**STATE PLANE NAD83(CO. NORTH)**  
N=1457221.02  
E=2755673.72

**PDOP=1.108**

BASIS OF ELEVATION

NAVD88 Computed using GEOID12B  
as measured using a combination of  
Static and Kinematic GPS based on  
an OPUS Solution Report.

BASIS OF BEARINGS

US STATE PLANE 1983  
CO NORTH 0501 GRID  
EPSG: 2231

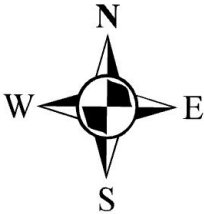
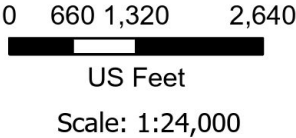
THIS IS TO CERTIFY THAT THE ABOVE PLAT WAS PREPARED FROM  
FIELD NOTES OF ACTUAL SURVEYS MADE BY ME OR UNDER MY  
SUPERVISION AND THAT THE SAME ARE TRUE AND CORRECT TO  
THE BEST OF MY KNOWLEDGE AND BELIEF.



RANDALL R. MILLER  
COLORADO PLS NO. 38084

Legend

- Surface Location
- ◆ Kick Off Point
- ◇ Landing Point Location
- Target Bottom Hole
- ▲ Found Corners



NORTH PARK ENGINEERING & CONSULTING, INC.

P.O. BOX 395  
WALDEN, CO 80480  
(970) 723-3725

DATE OF FIELD WORK: 03/20/2025	DRAWING COMPLETION: 5/16/2025
SURVEYED BY: CURTIS UTLEY	DRAWN BY: ALEX LAWTON
CHECKED BY: RANDALL MILLER	