

AS-DRILLED PLAT

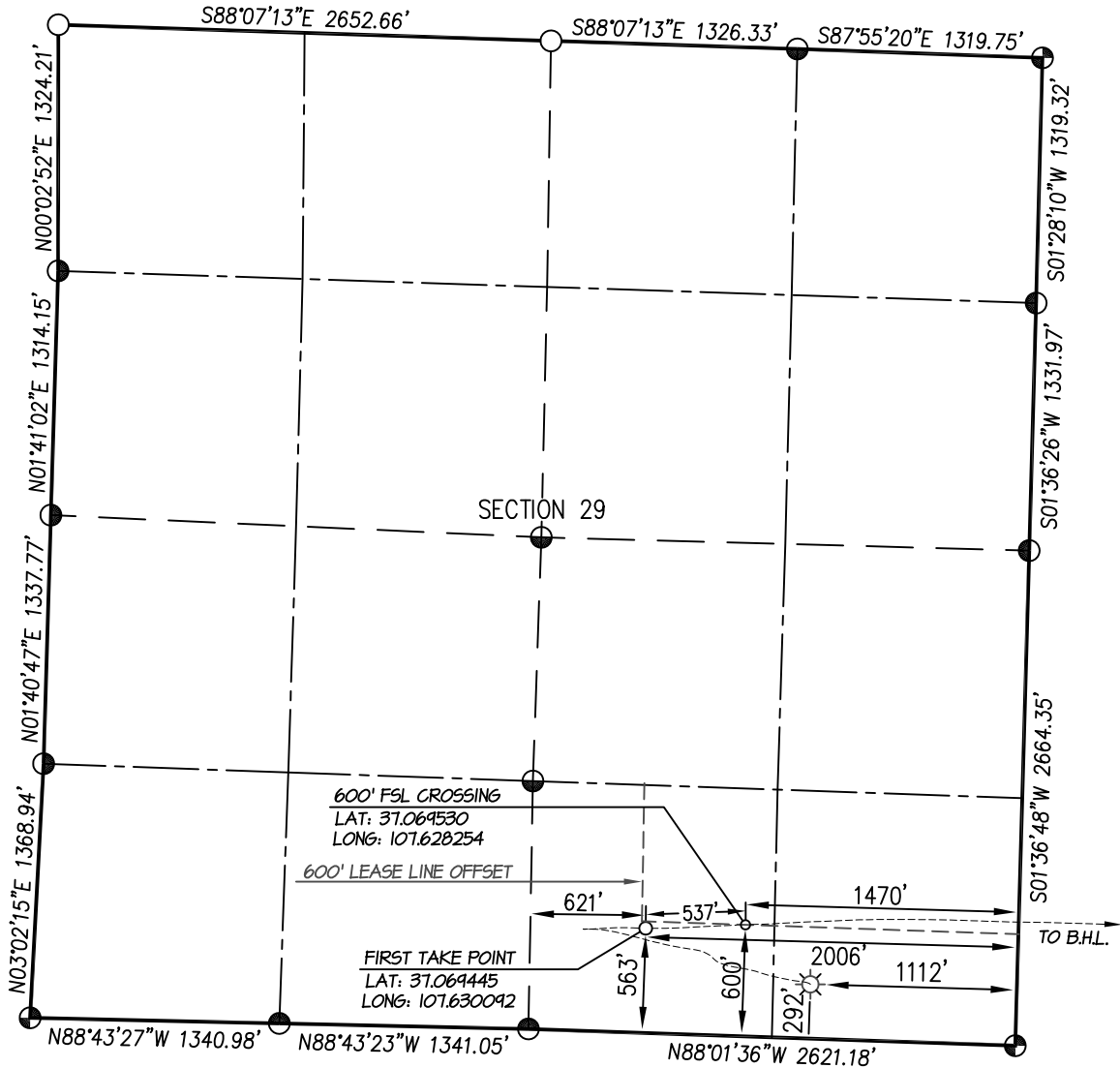
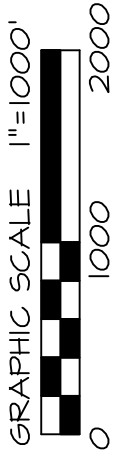
LOGOS OPERATING, LLC: IGNACIO 33-7 29P #1H

SURFACE LOCATION: 292' FSL & 1112' FEL

SECTION 29, T-33-N, R-7-W, N.M.P.M., LA PLATA COUNTY, COLORADO. GRADED PAD ELEVATION: 6419.2'

BOTTOM HOLE LOCATION: 633' FSL, 2218' FWL

SECTION 27, T-33-N, R-7-W, N.M.P.M., LA PLATA COUNTY, COLORADO.



○ denotes calculated position.

⊕ and ⊙ denote found 3-1/4" B.L.M.
Aluminum cap unless otherwise noted.

NOTE:

SEE SHEET 4 OF 4 FOR COORDINATE TABLE,
SURVEY NOTES, AND SURVEYOR'S CERTIFICATE.

SHEET 1 OF 4

PREPARED FOR:

LOGOS OPERATING, LLC

NORTHSTAR
SURVEYING & MAPPING, INC.

768 County Rd. 308
DURANGO, CO. 81303
(970) 385-0851

DRAWN BY: K.R. SURVEYED: 2/23/24
CHECKED BY: K.R. DRAWN: 4/14/25
FILE NO.: LGO3WPT JOB NO. LGO3

AS-DRILLED PLAT

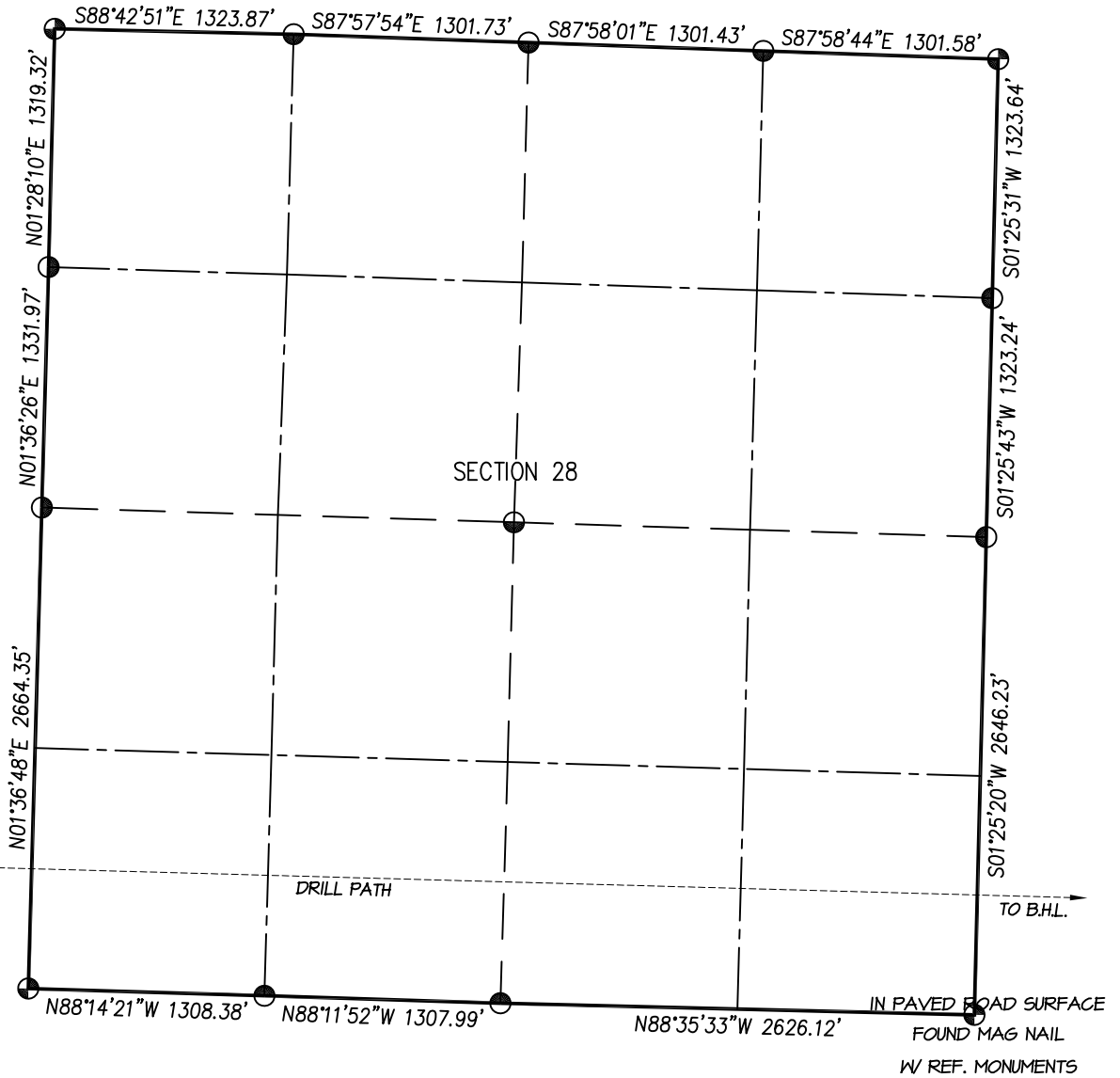
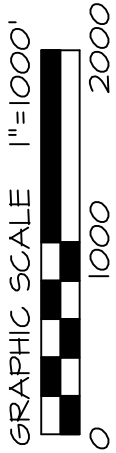
LOGOS OPERATING, LLC: IGNACIO 33-7 29P #1H

SURFACE LOCATION: 292' FSL & 1112' FWL

SECTION 29, T-33-N, R-7-W, N.M.P.M., LA PLATA COUNTY, COLORADO. GRADED PAD ELEVATION: 6419.2'

BOTTOM HOLE LOCATION: 633' FSL, 2218' FWL

SECTION 27, T-33-N, R-7-W, N.M.P.M., LA PLATA COUNTY, COLORADO.



⊕ and ⊙ denote found 3-1/4" B.L.M.
Aluminum cap unless otherwise noted.

NOTE:

SEE SHEET 4 OF 4 FOR COORDINATE TABLE,
SURVEY NOTES, AND SURVEYOR'S CERTIFICATE.

SHEET 2 OF 4

PREPARED FOR:

LOGOS OPERATING, LLC

NORTHSTAR
SURVEYING & MAPPING, INC.

768 County Rd. 308
DURANGO, CO. 81303
(970) 385-0851

DRAWN BY: K.R.	SURVEYED: 2/23/24
CHECKED BY: K.R.	DRAWN: 4/14/25
FILE NO.: LG03WP2	JOB NO. LG03

AS-DRILLED PLAT

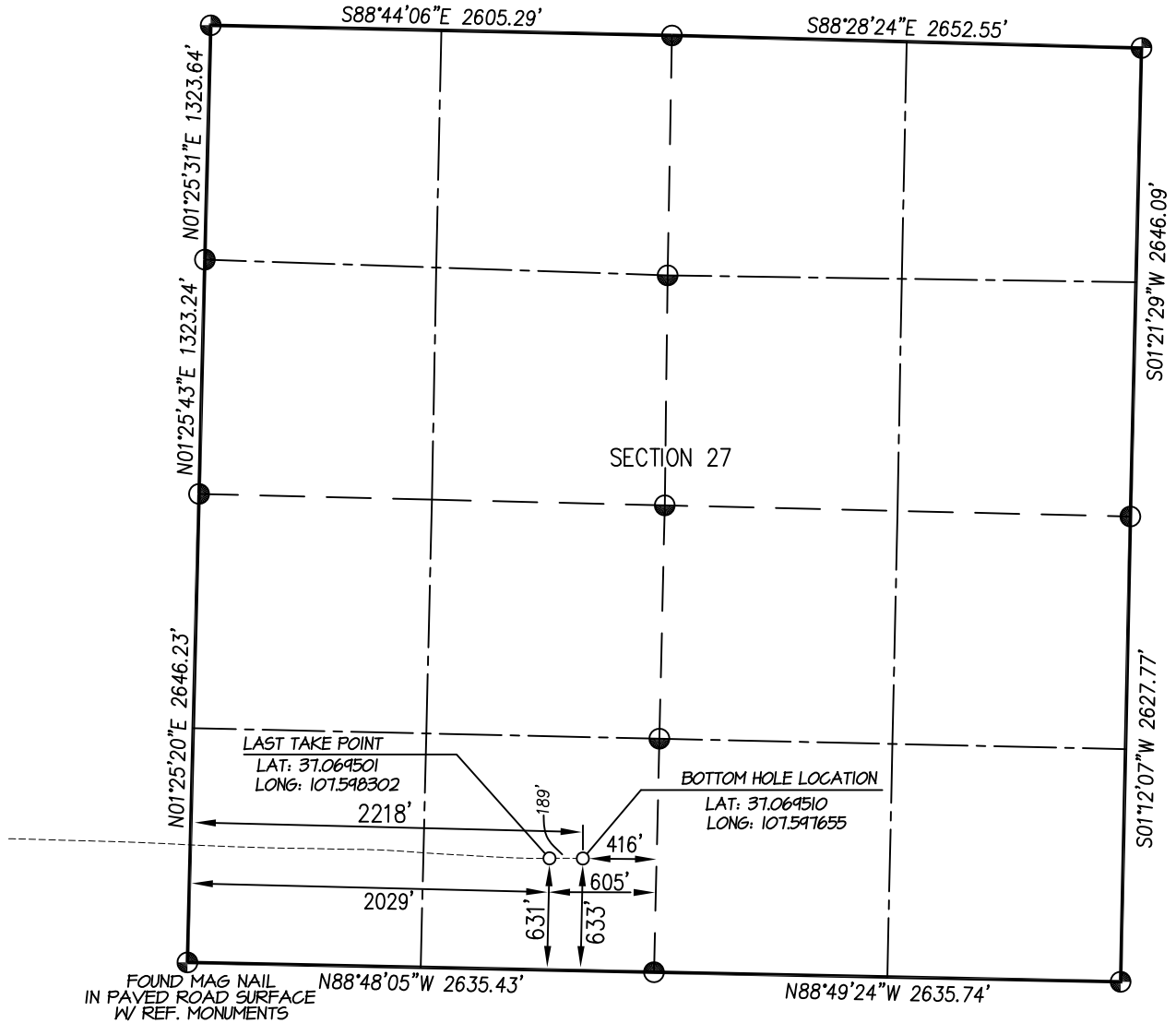
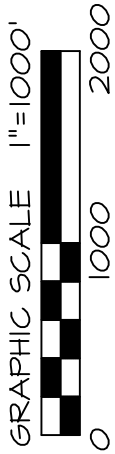
LOGOS OPERATING, LLC: IGNACIO 33-7 29P #1H

SURFACE LOCATION: 292' FSL & 1112' FWL

SECTION 29, T-33-N, R-7-W, N.M.P.M., LA PLATA COUNTY, COLORADO. GRADED PAD ELEVATION: 6419.2'

BOTTOM HOLE LOCATION: 633' FSL, 2218' FWL

SECTION 27, T-33-N, R-7-W, N.M.P.M., LA PLATA COUNTY, COLORADO.



⊕ and ⊙ denote found 3-1/4" B.L.M.
Aluminum cap unless otherwise noted.

NOTE:

SEE SHEET 4 OF 4 FOR COORDINATE TABLE,
SURVEY NOTES, AND SURVEYOR'S CERTIFICATE.

SHEET 3 OF 4

PREPARED FOR:

LOGOS OPERATING, LLC

NORTHSTAR
SURVEYING & MAPPING, INC.

768 County Rd. 308
DURANGO, CO. 81303
(970) 385-0851

DRAWN BY: K.R.	SURVEYED: 2/23/24
CHECKED BY: K.R.	DRAWN: 4/14/25
FILE NO.: LOG3WP3	JOB NO. LOG3

AS-DRILLED PLAT

LOGOS OPERATING, LLC: IGNACIO 33-7 29P #1H

SURFACE LOCATION: 292' FSL & 1112' FEL

SECTION 29, T-33-N, R-7-W, N.M.P.M., LA PLATA COUNTY, COLORADO. GRADED PAD ELEVATION: 6419.2'

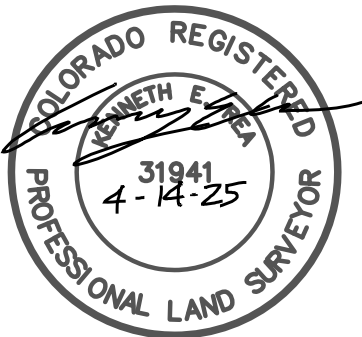
BOTTOM HOLE LOCATION: 633' FSL, 2218' FWL

SECTION 27, T-33-N, R-7-W, N.M.P.M., LA PLATA COUNTY, COLORADO.

IGNACIO 33-7 29P #1H	CSZ NAD '83	NAD '83	TIES	SEC/TWP/RNG
SURFACE HOLE LOCATION	N (Y) = 1,153,445.61' E (X) = 2,379,429.09'	LAT: 37.068673°N LONG: 107.627033°W	292' FSL 1112' FEL	SECTION 29 T-33-N, R-7-W
FIRST TAKE POINT	N (Y) = 1,153,746.99' E (X) = 2,378,543.12'	LAT: 37.069445°N LONG: 107.630092°W	563' FSL 2006' FEL	SECTION 29 T-33-N, R-7-W
600' FSL CROSSING	N (Y) = 1,153,765.75' E (X) = 2,379,079.91'	LAT: 37.069530°N LONG: 107.628254°W	600' FSL 1470' FEL	SECTION 29 T-33-N, R-7-W
LAST TAKE POINT	N (Y) = 1,153,557.47' E (X) = 2,387,816.57'	LAT: 37.069501°N LONG: 107.598302°W	631' FSL 2029' FWL	SECTION 27 T-33-N, R-7-W
BOTTOM HOLE LOCATION	N (Y) = 1,153,556.43' E (X) = 2,388,005.47'	LAT: 37.069510°N LONG: 107.597655°W	633' FSL 2218' FWL	SECTION 27 T-33-N, R-7-W

NOTES:

1. WELL LOCATION FOOTAGE CALLS MEASURED PERPENDICULAR TO SECTION LINES.
2. WELL GPS OBSERVATION PERFORMED BY KENNY REA ON 2/23/24 - PDOP VALUE = 1.7
3. BEARINGS & DISTANCE SHOWN ARE FIELD MEASURED UNLESS OTHERWISE NOTED.
4. ALL MEASURED DISTANCES SHOWN ARE GRID DISTANCE WITH NO SCALE FACTOR APPLIED.
5. BEARINGS ARE BASED ON THE NORTH AMERICAN DATUM OF 1983, COLORADO SOUTH STATE PLANE COORDINATE SYSTEM, ZONE 0503.
6. ELEVATION IS BASED ON THE NORTH AMERICAN VERTICAL DATUM OF 1988 (GEOID18).
7. DRILL PATH & DOWN HOLE COORDINATES BASED ON GEOGRAPHIC SURVEY REPORT PROVIDED BY SCOUT DRILLING TECHNOLOGIES.



I, KENNETH E. REA, A REGISTERED PROFESSIONAL LAND SURVEYOR IN THE STATE OF COLORADO, DO HEREBY CERTIFY THAT THE WELL LOCATION SHOWN ON THIS PLAT IS ACCURATELY PLOTTED FROM FIELD NOTES OF ACTUAL SURVEYS MADE UNDER MY DIRECT SUPERVISION, AND THAT THIS PLAT IS NOT A LAND SURVEY PLAT OR IMPROVEMENT SURVEY PLAT, AND THAT IT IS NOT TO BE RELIED UPON FOR THE ESTABLISHMENT OF FENCE, BUILDING, OR OTHER FUTURE IMPROVEMENT LINES.

SHEET 4 OF 4

PREPARED FOR:

LOGOS OPERATING, LLC

**NORTHSTAR
SURVEYING & MAPPING, INC.**

768 County Rd. 308
DURANGO, CO. 81303
(970) 385-0851

DRAWN BY: K.R.
CHECKED BY: K.R.
FILE NO.: LG03WP4
JOB NO.: LG03
SURVEYED: 2/23/24
DRAWN: 4/14/25