

Inspection/Audit Photos

Location Name: TEP ROCKY MOUNTAIN LLC GIBSON GULCH UNIT 10-30 D Pad

Location ID: 324013



Photo # 893 From entrance to location



Photo # 894 Location

Inspection/Audit Photos

Location Name: TEP ROCKY MOUNTAIN LLC GIBSON GULCH UNIT 10-30 D Pad

Location ID: 324013



Photo # 895 Location



Photo # 896 Location

Inspection/Audit Photos

Location Name: TEP ROCKY MOUNTAIN LLC GIBSON GULCH UNIT 10-30 D Pad

Location ID: 324013



Photo # 897 Location

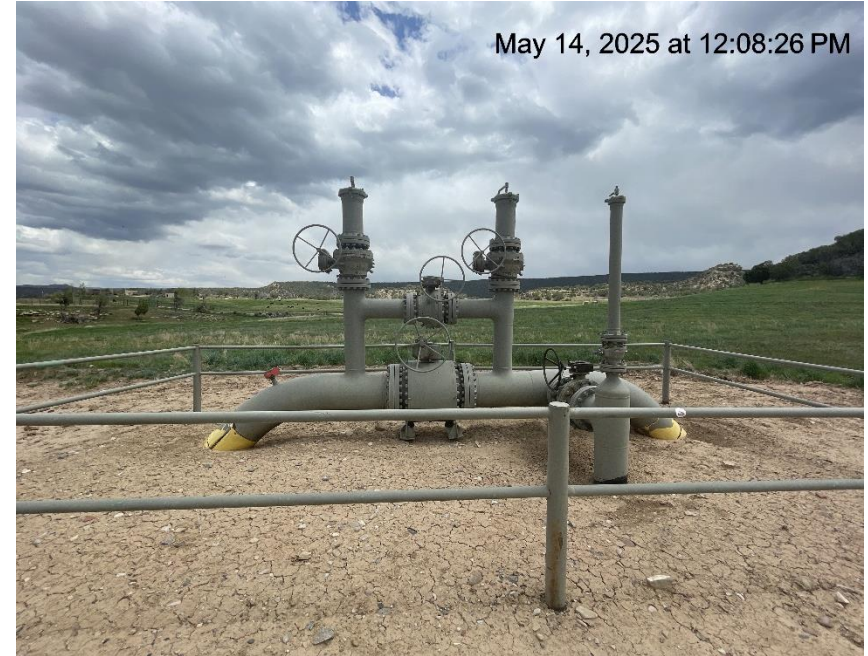


Photo # 898 Location

Inspection/Audit Photos

Location Name: TEP ROCKY MOUNTAIN LLC GIBSON GULCH UNIT 10-30 D Pad

Location ID: 324013



Photo # 899 Location



Photo # 900 Unused equipment

Inspection/Audit Photos

Location Name: TEP ROCKY MOUNTAIN LLC GIBSON GULCH UNIT 10-30 D Pad

Location ID: 324013

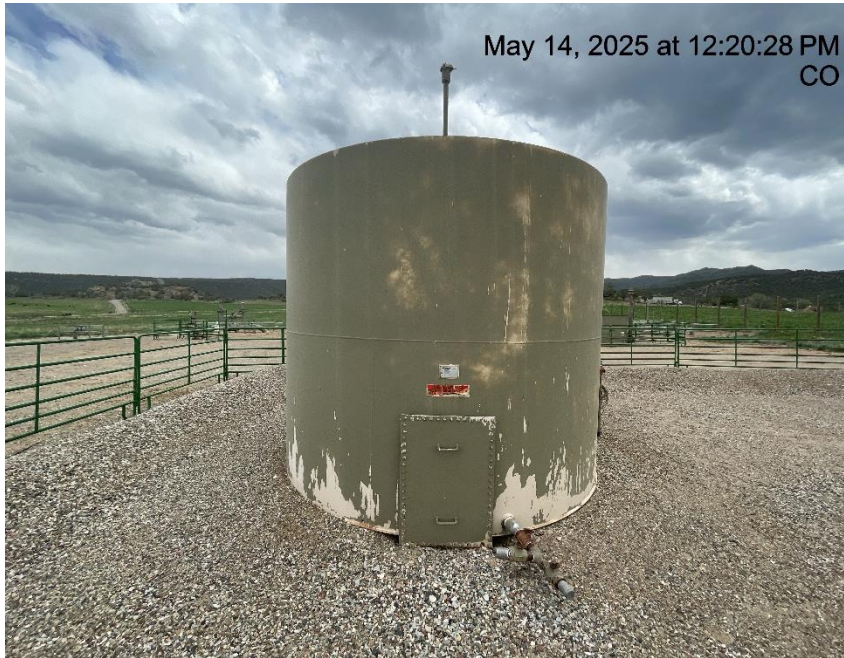


Photo # 901 Unused equipment



Photo # 902 Unused equipment

Inspection/Audit Photos

Location Name: TEP ROCKY MOUNTAIN LLC GIBSON GULCH UNIT 10-30 D Pad

Location ID: 324013



Photo # 903 Unused equipment



Photo # 904 Staining on top of the tank & down the side of tank that indicates the tank lacks integrity

Inspection/Audit Photos

Location Name: TEP ROCKY MOUNTAIN LLC GIBSON GULCH UNIT 10-30 D Pad

Location ID: 324013



Photo # 905 Staining down side of tank



Photo # 906 Valves are shut on water & oil dump lines

Inspection/Audit Photos

Location Name: TEP ROCKY MOUNTAIN LLC GIBSON GULCH UNIT 10-30 D Pad

Location ID: 324013



Photo # 907 Valves are shut on water & oil dump lines



Photo # 908 Valve is shut on oil dump line

Inspection/Audit Photos

Location Name: TEP ROCKY MOUNTAIN LLC GIBSON GULCH UNIT 10-30 D Pad

Location ID: 324013



Photo # 909 Valve is shut on oil dump line



Photo # 910 Valve is shut on water dump line

Inspection/Audit Photos

Location Name: TEP ROCKY MOUNTAIN LLC GIBSON GULCH UNIT 10-30 D Pad

Location ID: 324013



Photo # 911 Valves are shut on water & oil dump lines

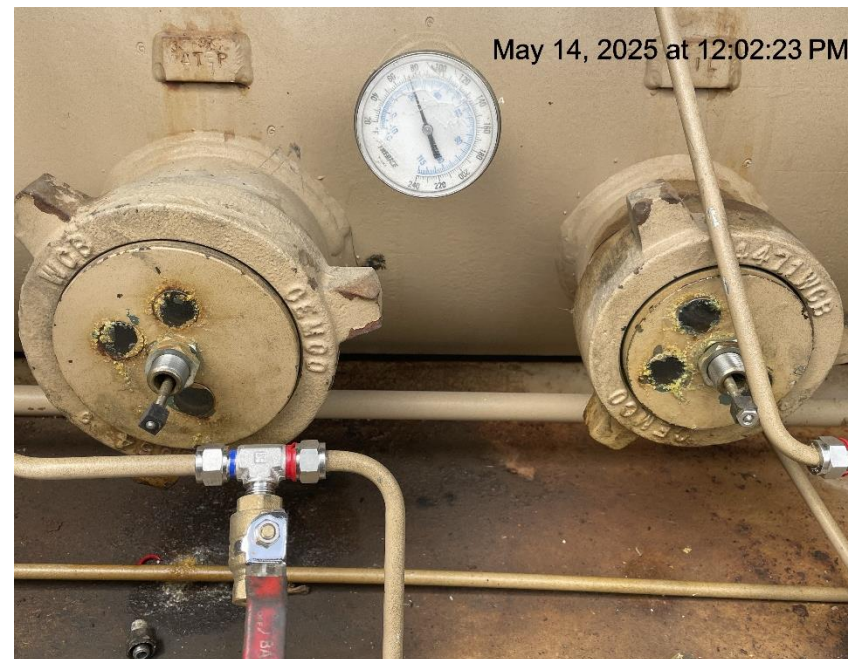


Photo # 912 Water & oil dump controllers have been removed from separator unit

Inspection/Audit Photos

Location Name: TEP ROCKY MOUNTAIN LLC GIBSON GULCH UNIT 10-30 D Pad

Location ID: 324013



Photo # 913 Water dump controller has been removed from separator unit



Photo # 914 Oil dump controller has been removed from separator unit