



Flowlines

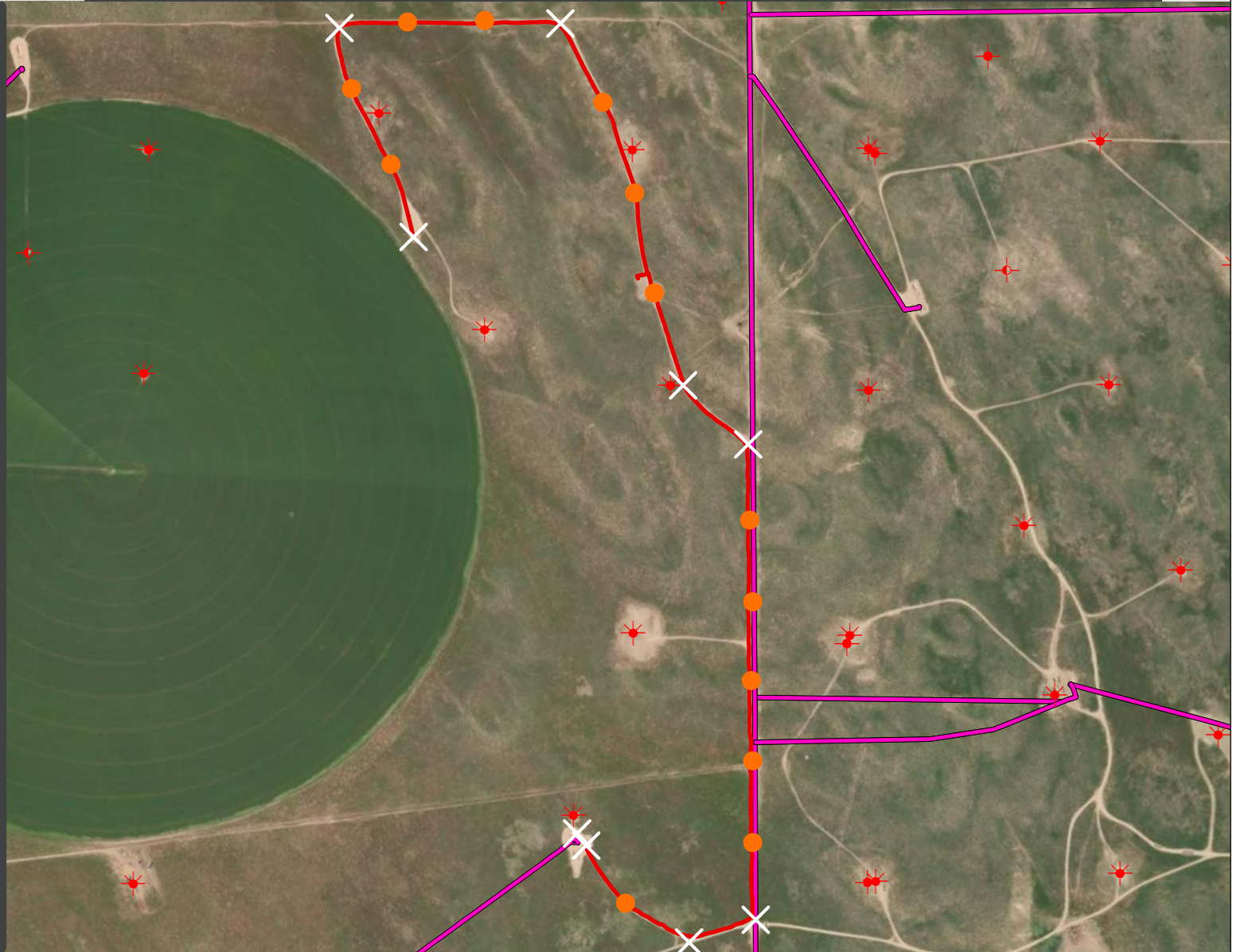
- Abandoned
- Active
- Out of Service
- Pre-Commissioned
- Removed
- Turned into Air Line
- Area of Conflict
(Proposed Abandon-in-Place Area)
- X Proposed Soil Sample Location
- Field Screening Location

Wells

- Active Well
- ◆ Abandoned Location
- ✱ Plugged & Abandoned
- ✱ Producing
- ✱ Shut-In
- ✱ Temporarily Abandoned
- ✱ Waiting on Completion

Third-Party Pipelines

- — — —
- — — —
- NWI Wetlands



Pipeline Overall Approximate Start Latitude/Longitude: 40.287491/-104.496287

Pipeline Overall Approximate End Latitude/Longitude: 40.278409/-104.493141

Created by: CJENCK

Date: 5/7/2025

