



FOR OGCC USE ONLY

RECEIVED NOV 20 02 COGCC

SUNDRY NOTICE

Submit original plus one copy. This form is to be used for general, technical and environmental sundry information. For proposed or completed operations, describe in full on Technical Information Page (back of this form).

Table with columns ET, OE, PR, ES

1. OGCC Operator Number: 96850
2. Name of Operator: Williams Production RMT Company
3. Address: 1515 Arapahoe St., Tower 3, Suite 1000
City: Denver State: CO Zip: 80202

4. Contact Name & Phone
Brucene S. Souta
No: 303-606-4048
Fax: 303-629-8265

Complete the Attachment Checklist

Attachment Checklist table with columns Oper, OGCC and rows for various document types like Survey Plat, Directional Survey, etc.

5. API Number: 05-103-10078
6. OGCC Lease No: #
7. Well Name: HALANDRAS Number: 1
8. Location (QtrQtr, Sec, Twp, Rng, Meridian): SW/4 NW/4 SECTION 21-T3S-R94W
9. County: RIO BLANCO
10. Field Name:
11. Federal, Indian or State Lease Number:

12. General Notice

General Notice form with multiple checkboxes and text fields for well name changes, location changes, abandoned locations, shut-in status, and production resumption.

13. Technical Engineering/Environmental Notice

Technical Engineering/Environmental Notice form with checkboxes for Notice of Intent, Report of Work Done, and various technical details like Commingle Zones, Request to Vent or Flare, etc.

I hereby certify that the statements made in this form are, to the best of my knowledge, true, correct, and complete.

Print Name: Brucene S. Souta

Signed: [Signature] Title: Sr. Engineering Tech Date: 11/15/02

OGCC Approved: [Signature] Title: NORTHWEST AREA ENGINEER Date: 12-18-02

CONDITIONS OF APPROVAL, IF ANY:



Page 2

1. Operator Number: 96850 2. API Number: 05-103-10078  
 3. Name of Operator: Williams Production RMT Company  
 4. Well Name: HALANDRAS Number: 1  
 5. Location (QtrQtr, Sec, Twp, Rng, Meridian): SW/4 NW/4 SECTION 21-T3S-R94W

This form is to be completed whenever a Sundry Notice is submitted requiring detailed report of work to be performed or completed. This form shall be transmitted within thirty (30) days of work completed as a "subsequent" report and must accompany Form 4, Page 1.

ET	OE	PR	ES

6. **DESCRIBE PROPOSED OR COMPLETED OPERATIONS**

Williams Production RMT Company spud this well 6/20/01. The well reached a total depth of 13,330' on 8/26/01. Several zones were perforated and tested for production. The well was temporarily abandoned on 6/13/02. Please see the attached detailed Drilling Operations Summary, Completion Operations Summary and Wellbore Diagram. Below is a brief summary of the wellbore.

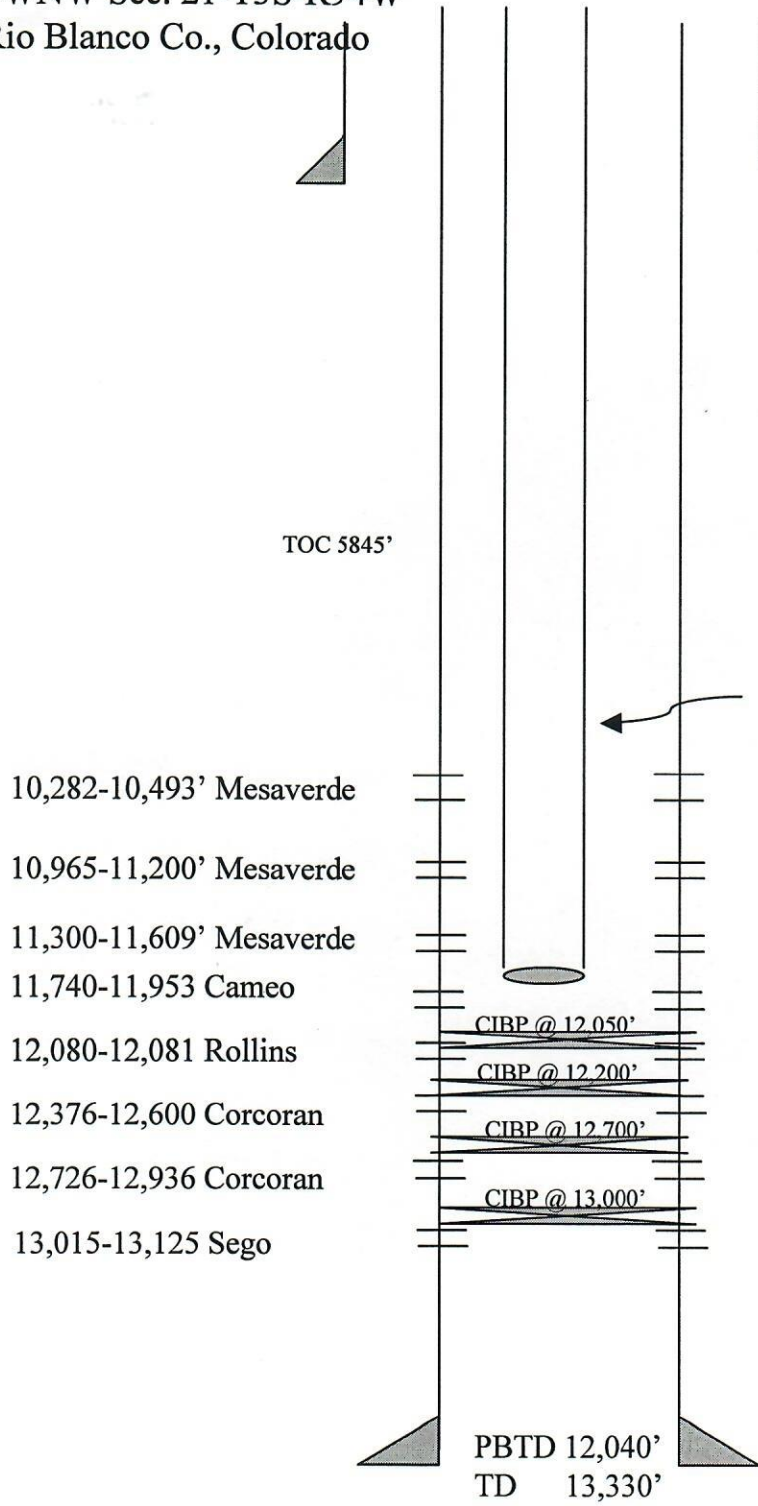
Surface casing: 9-5/8" 32.3# casing set at 1111.3'. Cemented with 575 sacks cement on 6/23/01.  
 Production casing: 5-1/2" 17# casing set at 13,327.9'. Cemented with 1695 sacks cement on 8/26/01.

Perforations:

- 13,015 - 13,125 Sego CIBP @ 13,000' on 10/5/01.
- 12,726 - 12,936 Corcoran Stimulated with 68,300# sand & 761 bbls gel. CIBP @ 12,700' 10/23/01.
- 12,376 - 12,600' Cozette. CIBP @ 12,200' 11/2/01.
- 12,080 - 12,081' Rollins. CIBP @ 12,050' on 11/06/01.
- 11,740 - 11,953' Cameo Stimulated with 46,577# & 1347 bbls gel (2 attempts)
- 11,300 - 11,609' Mesaverde Stimulated with 38,459# sand & 2168 bbls gel and 81,611# sand & 925 bbls gel.
- 10,965 - 11,200' Mesaverde Stimulated with 242,492# sand & 3331 bbls gel
- 10,282 - 10,493' Mesaverde Stimulated with 211,250# sand & 3122 bbls gel.

Production tests and Spinner survey run through 6/13/02.  
 Well temporarily abandoned.

Williams Production RMT Company  
Halandras No. 1  
1569' FNL & 173' FWL  
SWNW Sec. 21-T3S-R94W  
Rio Blanco Co., Colorado



27 jts 9-5/8" 32.3# csg  
set @ 1111.3'.  
Cmtd w/575 sx.  
Date: 06/23/01.

267 jts. 2-3/8" tbg, SN, 1 jt.  
Tbg, bit sub set @ 11,680'.  
Date 1/2/02

316 jts. 5-1/2" 17.0# P-110 &  
L-80 csg set @ 13,327.9'.  
Cmtd w/1695 sx.  
Date: 08/26/01.

**Halandras #1**

1569' FNL x 173' FWL

SWNW Section 21-T3S-R94W

Rio Blanco County, CO

Rig: #445

Spud Date: 06/20/01

Projected Depth: 12,500'

- 06/20/01** Moving to location & rigging up rig.
- 06/21/01** Day 1. 21.0 hours rigging up. Well **SPUD DATE 06/20/01**. Depth 115'. Present operation: Drilling surface. Drlg 2.5 hrs; 24 hr footage 115'. MW 8.5, VIS 45, WL 0. Rig up, spud well, pick up directional tools.
- 6/22/01** Day 2. Depth 824'. Present operation: Washing & reaming. Drlg 17 hrs; 24 hr footage 709'. MW 9.0, VIS 58, WL --. Drilled to 824'. Trip for MWD, wash and ream.
- 6/23/01** Day 3. Depth 1120'. Present operation: Running 9-5/8" surface casing.. Drlg 11 hrs; 24 hr footage 196'. MW 9.2, VIS 55, WL 12.8. Drilled to 1120'. Circulate & condition hole, trip out of hole to run 9-5/8" casing.
- 6/24/01** Day 4. Depth 1120'. Present operation: Nipple up, preparing to drill ahead. Drlg -- hrs; 24 hr footage 0'. MW 9.2, VIS 55, WL 12.8. Ran 27 jts 9-5/8" 32.3# H-40 ST&C and set @ 1114.3'. Cemented with 575 sx Class G (410 sx lead & 165 sx tail).
- 6/25/01** Day 5. Depth 1325'. Present operation: Drilling. Drlg 7 hrs; 24 hr footage 205'. MW 8.9, VIS 50, WL 12.8. Nipple up & tested BOP's. Drilled cement & 5' of new hole. Directionally drilled to 1325'.
- 6/26/01** Day 6. Depth 2550'. Present operation: Drilling. Drlg 23.5 hrs; 24 hr footage 1225'. MW 9.3, VIS 49, WL 6.8. Directionally drilled to 2550'.
- 6/27/01** Day 7. Depth 3400'. Present operation: Drilling. Drlg 23.5 hrs; 24 hr footage 850'. MW 9.3, VIS 44, WL 7.0. Directionally drilled to 3400'.
- 6/28/01** Day 8. Depth 3950'. Present operation: Drilling. Drlg 22.5 hrs; 24 hr footage 550'. MW 9.4, VIS 41, WL 6.6. Directionally drilled from 3400' to 3950'.
- 6/29/01** Day 9. Depth 4242'. Present operation: Trip for bit. Drlg 22.5 hrs; 24 hr footage 292'. MW 9.5, VIS 46, WL 6.6.

- 6/30/01** Day 10. Depth 4355'. Present operation: Drilling. Drlg 5.5 hrs; 24 hr footage 113'. MW 9.5, VIS 55, WL 6.2. Trip out of the hole, change out mud motor, align UBHO, calibrate MWD. Trip in the hole, hit bridge @ 3014'. Washing/reaming from 3014' to 3621'. Trip in the hole to 4204'; washing/reaming to bottom 4242'. Directional drill 4242' to 4355'.
- 7/1/01** Day 11. Depth 4650'. Present operation: Drilling. Drlg 22.5 hrs; 24 hr footage 295'. MW 9.6, VIS 52, WL 6.0. Rig repair: #3 engine died and oil leak from compound. Direction drill 4355' to 4650'.
- 7/2/01** Day 12. Depth 4760'. Present operation: Drilling. Drlg 11.5 hrs; 24 hr footage 110'. MW 9.7, VIS 51, WL 6.0. Directional drill from 4650' to 4760' holding angle less than 1.5 degrees; trip for bit, wash and ream 3220' to 3454'.
- 7/3/01** Day 13. Depth 5170'. Present operation: Drilling. Drlg 23.0 hrs; 24 hr footage 410'. MW 9.8, VIS 56, WL 5.8. Directional drill from 4760' to 5170', maximum hole angle 2.2 degrees. Rig repair #2 and #3 draw works engines died (hot), cooled down engines and restarted.
- 7/4/01** Day 14. Depth 5411'. Present operation: Drilling. Drlg 24.0 hrs; 24 hr footage 241'. MW 9.8, VIS 61, WL 5.6. Drill from 5170' to 5411'.
- 7/5/01** Day 15. Depth 5621'. Present operation: Drilling. Drlg 23.5 hrs; 24 hr footage 210'. MW 9.8, VIS 62, WL 5.8. Drill from 5411' to 5621'.
- 7/6/01** Day 16. Depth 5892'. Present operation: Drilling. Drlg 14.5 hrs; 24 hr footage 271'. MW 9.9, VIS 55, WL 5.6. Pump slug. Trip out of the hole – tight from 5600' to 5540', 5010' to 4800' and 3600' to 3510'. Change out bit and calibrate MWD. Trip in the hole. Washing/reaming 60' to bottom. Drill from 5621' to 5892'.
- 7/7/01** Day 17. Depth 6120'. Present operation: Drilling. Drlg 23.5 hrs; 24 hr footage 228'. MW 9.9, VIS 67, WL 5.0.
- 7/8/01** Day 18. Depth 6355'. Present operation: Drilling. Drlg 23.5 hrs; 24 hr footage 235'. MW 9.9, VIS 67, WL 5.0.
- 7/9/01** Day 19. Depth 6510'. Present operation: Drilling. Drlg 14.0 hrs; 24 hr footage 155'. MW 9.9, VIS 60, WL 5.0. Mix and pump slug. Trip out of the hole, tight hole from 5415' to 5330'. Change out bit, mud motor, calibrate MVD. Trip in the hole, wash and ream 40' to bottom.

- 7/10/01** Day 20. Depth 6680'. Present operation: Drilling. Drlg 23.0 hrs; 24 hr footage 170'. MW 9.8, VIS 60, WL 5.6. Drill from 6510' to 6680'. Rig repair, oil leak on compound. Water 4 loads, total 104 = 8320 bbls.
- 7/11/01** Day 21. Depth 6780'. Present operation: Trip in hole. Drlg 10.0 hrs; 24 hr footage 100'. MW 10.0, VIS 64, WL 4.8. Drill from 6680' to 6780'. MWD failure, mix and pump slug. Trip out of the hole, tight from 6280' to 6330'. Change out bit, repair and calibrate MWD. Trip in the hole BHA, cut drill line. Trip in the hole, test MWD.
- 7/12/01** Day 22. Depth 6780'. Present operation: Trip in hole. Drlg -- hrs; 24 hr footage 0'. MW 10.0, VIS 64, WL 4.8. Trip in hole, test MWD.
- 7/13/01** Day 23. Depth 7152'. Present operation: Trip. Drlg 10.5 hrs; 24 hr footage 77'. MW 9.9, VIS 55, WL 5.4. Install rotating head bearing and seal assembly. MWD failure. Mix and pump slug. Trip out of the hole, tight hole from 6270' to 6350'. Change out bit, MWD, mud motor. Trip in the hole, test MWD, fill up drill pipe @ 5000'. Water: 2 loads, total 107 = 8560 bbls.
- 7/14/01** Day 24. Depth 7422'. Present operation: Drilling. Drlg 23.0 hrs; 24 hr footage 270'. MW 9.9, VIS 54, WL 6.8. Directional drill/ MWD interference, survey several times. Water: 3 loads, total 110 = 8800 bbls.
- 7/15/01** Day 25. Depth 7587'. Present operation: Drilling. Drlg 21.5 hrs; 24 hr footage 165'. MW 9.8, VIS 60, WL 7.4. Directional drill/ MWD malfunction.
- 7/16/01** Day 26. Depth 7795'. Present operation: Drilling. Drlg 23.5 hrs; 24 hr footage 208'. MW 9.8, VIS 53, WL 7.4. Directional drill 7587' to 7795'.
- 7/17/01** Day 27. Depth 7975'. Present operation: Drilling. Drlg 22.0 hrs; 24 hr footage 180'. MW 9.7, VIS 50, WL 7.2. Directional drill 7795' to 7975'. Rig repair, mud pumps.
- 7/18/01** Day 28. Depth 8090'. Present operation: Drilling. Drlg 12.0 hrs; 24 hr footage 115'. MW 9.7, VIS 50, WL 6.6. Directional drill 7975' to 8090', trip for bit. Water 1 load, total 116 = 9280 bbls.
- 7/19/01** Day 29. Depth 8390'. Present operation: Drilling. Drlg 24.0 hrs; 24 hr footage 300'. MW 9.7, VIS 48, WL 7.8. Directional drill 8090' to 8390'.
- 7/20/01** Day 30. Depth 8625'. Present operation: Drilling. Drlg 22.0 hrs; 24 hr footage 235'. MW 9.8, VIS 60, WL 7.8. Directional drill 8390' to 8625'.

Rig repair, 4" valve on mud line failed. Water 5 loads, total 120 = 9600 bbls.

- 7/21/01** Day 31. Depth 8704'. Present operation: Trip in the hole. Drlg 12.0 hrs; 24 hr footage 79'. MW 9.6, VIS 52, WL 7.0. Directional drill 8625' to 8704'. Trip out of the hole. Change out bit, mud motor, orient UBHO and calibrate MWD. Trip in the hole, test MWD, break circulation 2 times. Water 3 loads, total 123 = 9840 bbls.
- 7/22/01** Day 32. Depth 8826'. Present operation: Drilling. Drlg 21.0 hrs; 24 hr footage 122'. MW 9.5, VIS 50, WL 8.0. Directional drill 8704' to 8826'. Trip in the hole, build mud volume. Having some hole problems with mud weight below 9.7 ppg (shales sluffing).
- 7/23/01** Day 33. Depth 8981'. Present operation: Drilling. Drlg 23.0 hrs; 24 hr footage 155'. MW 9.7, VIS 57, WL 8.0. Directional drill 8826' to 8981'. Shale shakers stopped working due to an electrical problem at 1500 hours; have been down since.
- 7/24/01** Day 34. Depth 9160'. Present operation: Drilling. Drlg 23.0 hrs; 24 hr footage 179'. MW 9.8, VIS 55, WL 7.8. Directional drill 8981' to 9160'. Shale shakers repaired and back on line @ 1430 hours.
- 7/25/01** Day 35. Depth 9198'. Present operation: Tripping. Drlg 5.0 hrs; 24 hr footage 38'. MW 9.8, VIS 55, WL 8.0. Flow check, BOP drill, pump slug. Trip out of the hole. Test BOP. Trip in the hole BHA. Cut drill line. Rig repair air compressor. Trip in the hole, break circulation two times.
- 7/26/01** Day 36. Depth 9390'. Present operation: Drilling. Drlg 21.5 hrs; 24 hr footage 192'. MW 9.8, VIS 52, WL 8.0. Trip in hole. Wash & ream 110' to bottom. Drill 9198 to 9229'. Drill 9229 to 9323'. Slide drill to 9339'. Rotary drill to 9353'. Slide drill to 9390'.
- 7/27/01** Day 37. Depth 9585'. Present operation: Drilling. Drlg 23.5 hrs; 24 hr footage 195'. MW 9.7, VIS 51, WL 7.0. Slide drill 9390-9394'. Rotary drill 9394 to 9446'. Service rig. Rotary drill 9446 to 9585'.
- 7/28/01** Day 38. Depth 9665'. Present operation: Drilling. Drlg 9.5 hrs; 24 hr footage 80'. MW 9.8, VIS 48, WL 7.6. Rotary drill 9585-9624'. Check bit, rotary table stalled; survey. Mix and pump slug. Trip out of hole, change out mud motor, bit, calibrate MWD. Trip in the hole, test MWD, break circulation two times. Washing/reaming 40' to bottom. Rotary drill from 9624' to 9665'. Water: 3 loads, total 144 = 11,520 bbls

- 7/29/01** Day 39. Depth 9885'. Present operation: Drilling. Drlg 23.0 hrs; 24 hr footage 220'. MW 9.8, VIS 49, WL 7.0. Rotary drill 9665-9755'. Rig repair, air compressor. Rotary drill 9755' to 9885'. Water: 3 loads, total 147 = 11,760 bbls.
- 7/30/01** Day 40. Depth 10,075'. Present operation: Drilling. Drlg 23.5 hrs; 24 hr footage 190'. MW 9.8, VIS 50, WL 7.6. Rotary drill 9885-9973'. Rig service. Rotary drill 9073' to 10,075'. Water: 4 loads, total 151 = 12,080 bbls.
- 7/31/01** Day 41. Depth 10,270'. Present operation: Drilling. Drlg 23.5 hrs; 24 hr footage 195'. MW 9.8, VIS 47, WL 7.0. Rotary drill 10,075-10,159'. Rig service. Rotary drill 10,159' to 10,270'. Water: 6 loads, total 157 = 12,560 bbls.
- 8/1/01** Day 42. Depth 10,329'. Present operation: Washing/reaming. Drlg -- hrs; 24 hr footage 59'. MW 9.8, VIS 47, WL 7.0. Wash and ream down to bottom @ 10,329'.
- 8/2/01** Day 43. Depth 10,500'. Present operation: Drilling. Drlg 23.5 hrs; 24 hr footage 171'. MW 9.8, VIS 51, WL 7.0. Water: 5 loads, total 167 = 13,360 bbls.
- 8/3/01** Day 44. Depth 10,660'. Present operation: Drilling. Drlg 23.5 hrs; 24 hr footage 160'. MW 9.9, VIS 52, WL 7.4. Water: 6 loads, total 173 = 13,840 bbls.
- 8/4/01** Day 45. Depth 10,722'. Present operation: Drilling. Drlg 9.5 hrs; 24 hr footage 62'. MW 9.9, VIS 53, WL 7.0. Mix and pump slug. Trip out of the hole and change out mud motor and bit. Trip in the hole, BHA, test MWD. Cut drill line and trip in the hole. Water: 3 loads, total 176 = 14,080 bbls.
- 8/5/01** Day 46. Depth 10,911'. Present operation: Drilling. Drlg 23.5 hrs; 24 hr footage 189'. MW 9.8, VIS 42, WL 8.6. Water: 4 loads, total 180 = 14,400 bbls.
- 8/6/01** Day 47. Depth 11,100'. Present operation: Drilling. Drlg 23.5 hrs; 24 hr footage 189'. MW 9.9, VIS 47, WL 7.8. Water: 3 loads, total 183 = 14,640 bbls.
- 8/7/01** Day 48. Depth 11,185'. Present operation: Drilling. Drlg 9.0 hrs; 24 hr footage 85'. MW 9.9, VIS 54, WL 7.6. Mix and pump slug. Trip out of the hole and change out bit, calibrate MWD. Trip in the hole, test MWD, break circulation 2 times. Washing/reaming 50' to bottom. Trip gas 10' flare. Water: 3 loads, total 186 = 14,880 bbls.

- 8/8/01** Day 49. Depth 11,415'. Present operation: Drilling. Drlg 22.0 hrs; 24 hr footage 230'. MW 9.9, VIS 48, WL 8.2. Work stuck pipe free @ 11,405' (coal). Washing/reaming (tight hole 15'). Water: 4 loads, total 190 = 15,200 bbls.
- 8/9/01** Day 50. Depth 11,660'. Present operation: Drilling. Drlg 22.5 hrs; 24 hr footage 245'. MW 9.9, VIS 52, WL 7.0. Water: 3 loads, total 193 = 15,440 bbls.
- 8/10/01** Day 51. Depth 11,743'. Present operation: Stuck pipe; run wire line to find free point. Drlg 8.0 hrs; 24 hr footage 83'. MW 10.0, VIS 80, WL 6.4. Rig repair, low drum chain broke. Work stuck pipe. Wire line work; drill pipe screen inside drill pipe, try to knock it out. Water: 4 loads, total 197 = 15,760 bbls.
- 8/11/01** Day 52. Depth 11,743'. Present operation: Slip and cut drilling. Drlg 0 hrs; 24 hr footage 0'. MW 10.1, VIS 80, WL 6.4. Wireline work: run free point; back off drill collars @ 11,602', 3 attempts before successful. Rig down wireline. Trip out of the hole, 10 stands wet. Mix and pump slug. Trip out of the hole, found 3 tool joint connections to be loose. Lay down 3 drill collars, pick up fishing tools, trip in the hole to 1100'.
- 8/12/01** Day 53. Depth 11,743'. Present operation: Waiting for crew. Drlg 0 hrs; 24 hr footage 0'. MW 10.0, VIS 68, WL 7.2. Cut drill line. Trip in the hole, check torque on each connection. Screw into fish, jar on fish, fish free @ 1600 hrs. Circulate out trip gas (3246 units); trip out of the hole. Circulate and work drill pipe. Crew walked off job due to controversy about drilling line.
- 8/13/01** Day 54. Depth 11,815'. Present operation: Drilling. Drlg 8.5 hrs; 24 hr footage 72'. MW 10.1, VIS 60, WL 6.6. Trip out of the hole with fish. Lay down fish, fishing tools, 3 drill collars and mud motor. Pick up mud motor, 5 drill collars, drilling jars. Trip in the hole, test MWD, fill up drill pipe 2 times. Washing/reaming 90' to bottom. Rotary drill from 11,743' to 11,815', 72' in 8.5 hrs, 8.4 fph. Water: 5 loads, total 202 = 16,160 bbls.
- 8/14/01** Day 55. Depth 12,090'. Present operation: Drilling. Drlg 23.5 hrs; 24 hr footage 275'. MW 10.1, VIS 56, WL 6.4. Rotary drill from 11,815' to 11,862', 47' in 2.5 hours, 18.8 fph. Jar drill string free @ 11,862'. Rotary drill from 11,862' to 12,090', 228' in 21 hours, 10.8 fph.. Water: 5 loads, total 207 = 16,560 bbls.
- 8/15/01** Day 56. Depth 12,295'. Present operation: Drilling. Drlg 22.5 hrs; 24 hr footage 205'. MW 10.1, VIS 56, WL 6.0. Rotary drill from 12,090' to

12,138', 48' in 3.5 hours, 13.7 fph. Rig repair, #2 engine torque converter chain. Rotary drill from 12,138' to 12,295', 157' in 19 hours, 8.3 fph..  
Water: 3 loads, total 210 = 16,800 bbls.

- 8/16/01** Day 57. Depth 12,341'. Present operation: Drilling. Drlg 7.0 hrs; 24 hr footage 46'. MW 10.1, VIS 50, WL 6.0. Rotary drill from 12,295' to 12,341', 46' in 7 hours, 6.1 fph. Pump slug and trip out of the hole. Lay down directional tools, change out bit. Trip in the hole, break circulation 2 times. Washing/reaming 60' to bottom.. Water: 3 loads, total 213 = 17,040 bbls.
- 8/17/01** Day 58. Depth 12,560'. **Received permission from COGCC to increase total depth to 13,200'.** Present operation: Drilling. Drlg 23.5 hrs; 24 hr footage 219'. MW 10.2, VIS 53, WL 6.8. Rotary drill from 12,341' to 12,445', 104' in 10.5 hours, 9.9 fph. Rig service. Rotary drill from 12,445' to 12,560', 110' in 13.0 hours, 8.5 fph. Water: 4 loads, total 217 = 17,360 bbls.
- 8/18/01** Day 59. Depth 12,714'. Present operation: Trip for bit. Drlg 17.0 hrs; 24 hr footage 154'. MW 10.2, VIS 50, WL 6.2. Rotary drill from 12,560' to 12,672', 112' in 10 hours, 11.2 fph. Rig service. Rotary drill from 12,672' to 12,714', 42' in 7.0 hours, 6 fph. Mix and pump slug. Trip out of the hole. Water: 3 loads, total 220 = 17,600 bbls.
- 8/19/01** Day 60. Depth 12,822'. Present operation: Drilling. Drlg 12.0 hrs; 24 hr footage 108'. MW 10.3, VIS 55, WL 5.6. Trip out of the hole and trip in the hole with BHA; cut drill line. Rig Repair, crown "O" matic. Trip in the hole, Washing/reaming 60' to bottom. Rotary drill from 12,714' to 12,822', 108' in 12 hours, 9 fph. Water: 4 loads, total 224 = 17,920 bbls.
- 8/20/01** Day 61. Depth 12,995'. Present operation: Drilling. Drlg 22.5 hrs; 24 hr footage 173'. MW 10.3, VIS 49, WL 6.0. Rotary drill from 12,822' to 12,842', 20' in 1 hour, 20 fph. Work stuck drill string free @ 12,842' (coal). Rotary drill from 12,842' to 12,858', 16' in 2.0 hours, 8 fph. Work stuck drill string free @ 12,858' (coal). Rotary drill from 12,858' to 12,995', 137' in 19.5 hours, 7 fph. Water: 2 loads, total 226 = 18,080 bbls.
- 8/21/01** Day 62. Depth 13,038'. Present operation: Drilling. Drlg 7.0 hrs; 24 hr footage 43'. MW 10.2, VIS 52, WL 6.0. Rotary drill from 12,995' to 13,009', 14' in 1.5 hours, 9.3 fph. Flow check, mix and pump slug. Trip out of the hole and change out bit and mud motor. Trip in the hole; washing/reaming 60' to bottom. Rotary drill from 13,009' to 13,038', 29' in 5.5 hours, 5.3 fph.

- 8/22/01** Day 63. **Total depth of 13,210' reached 8/22/01.** Depth 13,210'. Present operation: Wiper trip for logging. Drlg 21.0 hrs; 24 hr footage 172'. MW 10.5, VIS 52, WL 7.5. Rotary drill from 13,038' to 13,106', 68' in 9 hours, 7.6 fph. Rotary drill from 13,106' to 13,138', 32' in 3.5 hours, 9.1 fph. Rig repair #2 mud pump. Rotary drill from 13,138' to 13,210', 72' in 8.5 hours, 8.5 fph. Circulating/condition. Trip.
- 8/23/01** Day 64. Total depth 13,210'. Present operation: Logging. Wiper trip to 9400' and back to bottom. Circulate bottoms up. Trip out of the hole for logging. Lay down mud motor, monel DC, float sub, bit. Rip up and log the well; logger's TD 13,207'. Water: 3 loads, total 237 = 18,960 bbls.
- 8/24/01** Day 65. Total depth 13,210'. Present operation: Trip in the hole. Received permission 8/23/01 from Jaime Adkins of COGCC to drill to 13,312' in order to have 100' of rat hole to set float collar and get bottom set of perfs. Jaime said did not need a Sundry notice for this. Logged, tripping in the hole. Water: 4 loads, total 241 = 19,280 bbls.
- 8/25/01** Day 66. Total depth 13,323'. Present operation: Drilling. Drlg - hrs, 24 hr footage 113'. MW 10.4, VIS 49, WL 8.2. Trip in the hole, drill from 13,210' to 13,323'. Water: 3 loads, total 244 = 19,520 bbls.
- 8/26/01** Day 67. Total depth 13,330'. Present operation: Drilling. Drlg 1.0 hr, 24 hr footage 7'. MW 10.5, VIS 60, WL 7.2. Circulate bottoms up, pump slug. Lay down drill pipe, break Kelly, pull wear bushing. Rig up casing crew and ran 5-1/2", 17# production casing to 13,310.4'; set with 620 sx lead and 1075 sx tail cement. Water: 2 loads, total 246 = 19,680 bbls.
- 8/27/01** Day 68. Total depth 13,330'. Present operation: Rig released. Nipple down, clean mud tanks.
- 8/28/01** Day 69. Total depth 13,330'. Present operation: Rig down for rig move, should be moving to the Woodward #1. Nipple down BOP, nipple up tubing spool, clean mud tanks.



## Operations Summary Report

Legal Well Name: HALANDRAS 1  
 Common Well Name: HALANDRAS 1  
 Event Name: COMPLETION  
 Contractor Name: NO CONTRACTOR  
 Rig Name: NO RIG

Start: 9/7/2001  
 Rig Release:  
 Rig Number:

Spud Date: 6/21/2001  
 End: 6/13/2002  
 Group:

Date	From - To	Hours	Code	Sub Code	Phase	Description of Operations
9/7/2001	11:00 - 17:00	6.00	LOG	2		RUN CASED HOLE LOG
9/25/2001	08:00 - 12:00	4.00	SEQ	5		LAY FLOW LINES
9/26/2001	12:00 - 17:00	5.00	LOC	4		RIG UP/DOWN
9/27/2001	07:00 - 10:00	3.00	TRP	5		PU/LD TUBING/unloaded 461 jts 2-3/8 EUE N-80 tbg
	10:00 - 12:00	2.00	PERF	2		WL PERFORATE
	12:00 - 18:30	6.50	TRP	5		PU/LD TUBING
9/28/2001	07:00 - 09:30	2.50	TRP	5		PU/LD TUBING
	09:30 - 12:00	2.50	STIM	1		BREAK DOWN/ACID/Communicated to annulus, reversed out acid, pressure tested packer
	12:00 - 15:00	3.00	STIM	1		BREAK DOWN/ACID/G-Function perf at 13124
	15:00 - 18:00	3.00	STIM	1		BREAK DOWN/ACID/G-Function perf at 13015
	18:00 - 19:00	1.00	SWAB	1		SWAB
9/29/2001	07:00 - 11:30	4.50	SWAB	1		SWAB
	11:30 - 16:00	4.50	TRP	13		TRIP DUE TO FAILURE
10/1/2001	07:00 - 10:30	3.50	TRP	2		TRIP
	10:30 - 15:30	5.00	RIG	2		RIG REPAIR
	15:30 - 16:00	0.50	TRP	2		TRIP
	16:00 - 18:30	2.50	SWAB	1		SWAB
10/2/2001	07:00 - 09:00	2.00	SWAB	1		SWAB/pulled 2 runs
	09:00 - 10:30	1.50	RIG	2		RIG REPAIR
	10:30 - 13:00	2.50	SWAB	1		SWAB/pulled 5 runs
10/3/2001	06:00 - 18:00	12.00	PTST	5		SI FOR BUILD UP
10/4/2001	06:00 - 07:00	1.00	PTST	5		SI FOR BUILD UP
	07:00 - 12:00	5.00	RIG	2		RIG REPAIR
	12:00 - 16:30	4.50	SWAB	1		SWAB
	16:30 - 18:00	1.50	PTST	2		FLOW TEST
10/5/2001	06:00 - 09:00	3.00	PTST	2		FLOW TEST
	09:00 - 10:00	1.00	PTST	2		FLOW TEST
	10:00 - 10:30	0.50	DEQ	2		SET/TEST/RELEASE PACKER
	10:30 - 14:00	3.50	TRP	2		TRIP
	14:00 - 15:30	1.50	LOG	4		OTHER WL WORK
	15:30 - 18:00	2.50	PERF	2		WL PERFORATE
10/6/2001	07:00 - 12:00	5.00	TRP	2		TRIP
10/8/2001	07:00 - 08:00	1.00	DEQ	2		SET/TEST/RELEASE PACKER
	08:00 - 12:15	4.25	WOT	4		WAITING ON EQUIP/TOOLS
	12:15 - 18:00	5.75	STIM	1		BREAK DOWN/ACID
10/9/2001	07:00 - 09:00	2.00	DEQ	1		SET/RETREIVE CIR/BP
	09:00 - 10:00	1.00	DEQ	2		SET/TEST/RELEASE PACKER
	10:00 - 10:30	0.50	STIM	1		BREAK DOWN/ACID
	10:30 - 12:00	1.50	DEQ	1		SET/RETREIVE CIR/BP
	12:00 - 18:00	6.00	TRP	2		TRIP
10/10/2001	07:00 - 12:00	5.00	TRP	2		TRIP
	12:00 - 18:30	6.50	STIM	1		BREAK DOWN/ACID
10/11/2001	07:00 - 08:00	1.00	DEQ	1		SET/RETREIVE CIR/BP
	08:00 - 09:00	1.00	DEQ	2		SET/TEST/RELEASE PACKER
	09:00 - 12:00	3.00	RIG	2		RIG REPAIR
	12:00 - 18:30	6.50	SWAB	1		SWAB
10/12/2001	06:00 - 07:00	1.00	PTST	2		FLOW TEST
	07:00 - 12:30	5.50	SWAB	1		SWAB
	12:30 - 14:30	2.00	PTST	2		FLOW TEST
	14:30 - 18:00	3.50	PTST	5		SI FOR BUILD UP
10/13/2001	06:00 - 07:00	1.00	PTST	5		SI FOR BUILD UP
	07:00 - 07:30	0.50	WCL	2		BLOW DOWN WELL



## Operations Summary Report

Legal Well Name: HALANDRAS 1  
 Common Well Name: HALANDRAS 1  
 Event Name: COMPLETION  
 Contractor Name: NO CONTRACTOR  
 Rig Name: NO RIG

Start: 9/7/2001  
 Rig Release:  
 Rig Number:

Spud Date: 6/21/2001  
 End: 6/13/2002  
 Group:

Date	From - To	Hours	Code	Sub Code	Phase	Description of Operations
10/13/2001	07:30 - 09:30	2.00	DEQ	1		SET/RETREIVE CIR/BP
	09:30 - 12:00	2.50	TRP	5		PU/LD TUBING
	12:00 - 13:00	1.00	BOP	1		NU/ND BOP
	13:00 - 15:00	2.00	WHD	1		NU/TEST WELLHEAD
	15:00 - 16:00	1.00	BOP	1		NU/ND BOP
10/15/2001	07:00 - 10:00	3.00	STIM	2		SET FRAC EQUIPMENT
	10:00 - 12:30	2.50	PERF	2		WL PERFORATE
	12:30 - 13:50	1.33	STIM	2		SET FRAC EQUIPMENT
	13:50 - 14:40	0.83	STIM	3		FRACTURE
10/16/2001	14:40 - 19:30	4.83	PTST	2		FLOW TEST
	06:00 - 09:00	3.00	PTST	2		FLOW TEST
	09:00 - 16:00	7.00	TRP	2		TRIP
10/17/2001	16:00 - 17:00	1.00	PTST	2		FLOW TEST
	06:00 - 07:00	1.00	PTST	2		FLOW TEST
10/18/2001	07:00 - 17:30	10.50	SWAB	1		SWAB
	06:00 - 16:00	10.00	SWAB	1		SWAB
10/19/2001	16:00 - 17:30	1.50	PTST	2		FLOW TEST
	06:00 - 18:00	12.00	PTST	2		Swabbing/flow test
10/20/2001	06:00 - 15:00	9.00	PTST	2		Swabbing/flow test
10/21/2001	06:00 -		PTST	2		Swabbing/flow test
10/22/2001	07:00 - 12:30	5.50	PTST	2		40 Hr SITP-1100 & CP-2150. Tbg blw dwn in app. 5 min. RU swab, IFL @ 3900'. Made 12 runs & rcvrd 48 BW before tbg KO flwg.
	12:30 - 13:30	1.00	PTST	2		FTP-900 w/ 14 ck. CP-1325. Flwg gas w/ frequent slugs of wtr. Rcvrd 3 BW.
	13:30 - 14:30	1.00	PTST	2		FTP-570 w/ 14 ck. CP-1150. Flwg gas w/ frequent slugs of wtr. Rcvrd 3 BW.
	14:30 - 15:00	0.50	PTST	2		FTP-490 w/ 14 ck. CP-1100. Flwg gas w/ frequent slugs of wtr. Rcvrd 2 BW.
	15:00 - 16:00	1.00	PTST	2		FTP-330 w/ 14 ck. CP-1000. Flwg gas w/ frequent stugs of wtr. Rcvrd 2 BW.
	16:00 - 17:00	1.00	PTST	2		FTP-470 w/ 14 ck. CP-980. Flwg gas w/ frequent slugs of wtr. Rcvrd 2 BW. Left tbg flwg w/ 14 ck. 93% fluid load rcvrd.
10/23/2001	06:00 - 07:00	1.00	PTST	2		FLOW TEST
	07:00 - 08:00	1.00	PTST	3		Tbg-dead, CP- 1200. RU swab, FL @ 8200'. Made 1 run & rcvrd 4 BW. Wtr sample sent to Halco.
	08:00 - 09:00	1.00	WCL	2		BLOW DOWN WELL
	09:00 - 13:00	4.00	TRP	2		TRIP
	13:00 - 14:00	1.00	WOT	4		WAITING ON EQUIP/TOOLS
	14:00 - 14:30	0.50	PERF	1		RIG UP PERFORATORS
	14:30 - 16:00	1.50	PERF	2		Perf'd Cozzette @ 12,376', 12,410', 12,439', 12,508', 12,568', & 12,600' w/ 4" HSC using 12 gram charges @ 2 jsfp. Total of 12- 0.34" holes. FL remained @ 9700' before & after perf'g. Slight gas blow @ surface after perf'g. Ran 4.5" guage ring to 12,720'.
	16:00 - 17:30	1.50	DEQ	1		Set 5.5", 10k CIBP @ 12,700'
10/24/2001	17:30 - 18:00	0.50	TRP	1		PU Baker Model "G" RBP, 2 3/8"x 8' tbg pup, Retrievmatic Pkr, 1 jt. 2 3/8" tbg, & 2 3/8" stand. seat. npl.
	18:00 - 18:30	0.50	TRP	2		TIH w/ 60 jts 2 3/8", N80 tbg to 1952'. SI-SDON.
	07:00 - 11:00	4.00	TRP	2		TRIP/RIH with plug and packer
	11:00 - 12:30	1.50	CIRC	3		LOAD HOLE/filled hole
	12:30 - 13:00	0.50	DEQ	1		SET/RETREIVE CIR/BP at 12634', set packer at 12579'
	13:00 - 15:30	2.50	STIM	1		BREAK DOWN/ACID, G-Function perf at 12600' Initial 6960 psi at 2 bpm



## Operations Summary Report

Legal Well Name: HALANDRAS 1  
 Common Well Name: HALANDRAS 1  
 Event Name: COMPLETION  
 Contractor Name: NO CONTRACTOR  
 Rig Name: NO RIG

Start: 9/7/2001  
 Rig Release:  
 Rig Number:

Spud Date: 6/21/2001  
 End: 6/13/2002  
 Group:

Date	From - To	Hours	Code	Sub Code	Phase	Description of Operations
10/24/2001	13:00 - 15:30	2.50	STIM	1		final 6080 psi at 2.4 bpm Isip 4750 psi, 2 hrs 3055 psi
	15:30 - 17:30	2.00	DEQ	2		SET/TEST/RELEASE PACKER, unable to release RBP, pulled 2 stands, SDFN
10/25/2001	07:00 - 17:30	10.50	TRP	13		TRIP DUE TO FAILURE
	07:00 - 17:30	10.50	DEQ	2		Trip due to failure. Attempted to release plug for 3 hours. Trip for jars, rig tongs broke @ end of day.
10/26/2001	06:00 -		TRP	13		TRIP DUE TO FAILURE
10/27/2001	07:00 - 17:00	10.00	TRP	13		TRIP DUE TO FAILURE
10/29/2001	07:00 - 08:00	1.00	DEQ	2		SET/TEST/RELEASE PACKER
	08:00 - 17:00	9.00	STIM	1		BREAK DOWN/ACIDG-Function perfs at 12,568', 12,508', 12,439', Monitered pressure overnight with memory guage
10/30/2001	07:00 - 13:00	6.00	STIM	1		BREAK DOWN/ACID
	13:00 - 17:00	4.00	TRP	2		TRIP
	17:00 -					G-Function perfs @ 12,410', 12,376'. tbg still leaking slightly. Released tools, POOH, found backed off jt at 198 jts, Tool joint galled together. POOH, Laid down tools.
10/31/2001	07:00 - 11:00	4.00	TRP	2		TRIP
	11:00 - 11:30	0.50	DEQ	2		SET/TEST/RELEASE PACKER
	11:30 - 17:00	5.50	SWAB	1		SWAB
	17:00 -					RIH with 8 jts tail string, Packer, tbg. Set packer at 12,294' with end of tbg landed at 12,550'. Pulled 7 swab runs, Left fluid level at 10,200'. Trace of gas on last swab run
11/1/2001	07:00 - 13:00	6.00	SWAB	1		SWAB, Tagged fluid at 9800'. Pulled 6 swab runs, last 5 from SN, trace of gas, not measurable
	13:00 - 17:00	4.00	TRP	2		TRIP, filled tbg, released packer, POOH to 40 stands left in well
11/2/2001	07:00 - 08:00	1.00	TRP	2		TRIP/POOH with tbg, packer
	08:00 - 10:00	2.00	PERF	2		WL PERFORATE/Set CIBP at 12,200'
	10:00 - 13:30	3.50	TRP	2		Perforate Rollins @ 12,080'
	13:30 - 17:00	3.50	STIM	1		TRIP/run 2 jts tail string, Packer, tbg, Set Packer at 12016', bottom of tbg landed at 12,063' .
11/3/2001						BREAK DOWN/ACID/RU HES, Pumped G-Function Breakdown
						Initial 5280 psi at 1.4 bpm
						Acid 7800 psi at 3.2 bpm
						End Flush 5775 psi at 3.5 bpm
						Isip 3454 psi. Monitered pressure 2.5 hrs, 858 psi
11/3/2001	07:00 - 17:00	10.00	SWAB	1		SWAB/SITP 0 psi, Fluid level at surface, Pulled 15 swab runs. Last 2 runs dry. Trace of gas in runs 8 thru 13, Last 2 runs dry with no gas. Left tbg open to pit on a 20/64 choke
11/4/2001	06:00 - 18:00	12.00	PTST	2		FLOW TEST/ flowing on a 20 choke, no measurable pressure
11/5/2001	07:00 - 10:30	3.50	SWAB	1		SWAB/4 runs, last 2 runs dry, no gas
	10:30 - 11:00	0.50	WCL	1		KILL WELL/filled tbg
	11:00 - 13:30	2.50	RIG	2		RIG REPAIR/drum clutch
	13:30 - 17:00	3.50	TRP	2		TRIP/pulled 170 stands
11/6/2001	07:00 - 08:00	1.00	TRP	2		TRIP/POOH
	08:00 - 10:00	2.00	LOG	4		OTHER WL WORK/ Set CIBP at 12,050'
	10:00 - 11:30	1.50	PERF	1		RIG UP PERFORATORS
	11:30 - 16:00	4.50	TRP	2		TRIP/RIH with plug, Packer, tbg to 11950'
11/7/2001	07:00 - 17:00	10.00	STIM	1		BREAK DOWN/ACID
	17:00 - 17:45	0.75	CIRC	1		CIRCULATE/CONDITION
	17:45 -					Isolated Cameo perfs and broke down seperately. Circulated fill off of



## Operations Summary Report

Legal Well Name: HALANDRAS 1  
 Common Well Name: HALANDRAS 1  
 Event Name: COMPLETION  
 Contractor Name: NO CONTRACTOR  
 Rig Name: NO RIG

Start: 9/7/2001  
 Rig Release:  
 Rig Number:

Spud Date: 6/21/2001  
 End: 6/13/2002  
 Group:

Date	From - To	Hours	Code	Sub Code	Phase	Description of Operations
11/7/2001	17:45 -					BP after each break down to clean up tools
11/8/2001	07:00 - 08:00	1.00	DEQ	1		SET/RETREIVE CIR/BP
	08:00 - 17:30	9.50	TRP	2		TRIP
	17:30 -					Well Dead, Circulated fill off of plug, released, POOH, laid down tools, (plug pulled over most of the trip out of well) RIH with 137 stands tbg
11/9/2001	07:00 - 08:30	1.50	TRP	2		TRIP
	08:30 - 10:00	1.50	CIRC	1		CIRCULATE/CONDITION
	10:00 - 17:00	7.00	TRP	5		PU/LD TUBING
	-					RIH, Tagged at 12,053' with tbg, circulated well clean with KCL water, POOH, Laid down 237 jts 2-3/8" tbg. sdfn.
11/10/2001	07:00 - 09:00	2.00	TRP	5		PU/LD TUBING
	09:00 - 10:30	1.50				Changed out handling equipment, pipe rams to 3-1/2"
	10:30 - 17:00	6.50	TRP	5		PU/LD TUBING
	00:00 -					Laid down remainder of 2-3/8" tbg
						Changed handling equipment,
						PU 2 jts 3-1/2 EUE tail string, Packer, 2.31 F nipple, and 125 jts 3-1/2 EUE tbg
11/12/2001	07:00 - 15:30	8.50	TRP	5		PU/LD TUBING
	15:30 - 16:00	0.50	DEQ	2		SET/TEST/RELEASE PACKER
	06:00 -					PU 3-1/2 Frac String.
						Set Packer at 9820'
						Landed end of tbg at 9885'
						NU HES Frac Valve
11/13/2001	07:00 - 09:25	2.42	STIM	2		SET FRAC EQUIPMENT
	09:25 - 10:00	0.58	STIM	3		FRACTURE/screened out with 60 sks on perf
	10:00 - 11:30	1.50	PTST	2		FLOW TEST
	11:30 - 13:30	2.00	CIRC	1		CIRCULATE/CONDITION
	13:30 - 14:01	0.52	STIM	2		SET FRAC EQUIPMENT
	14:01 - 15:10	1.15	STIM	3		FRACTURE
	15:10 - 18:00	2.83	PTST	2		FLOW TEST
	00:00 -					9:25 am, Pumped 432 bbls, screened out with 60sks 4# 20/40 AcFrac Black sand on perfs.
						Pad on 7870 psi at 16.5 bpm
						End Pad 7940 psi at 16.5 bpm
						4# on 7000 psi at 16.4 bpm
						Pressured out with 66 bbls 4# sand on perfs
						Flowed back, released packer, reversed out tbg until clean.
						Reset Packer and pumped 2nd Job at 2:01 pm.
						Initial 9100 psi at 6 bpm
						End Pad 8990 psi at 13.9 bpm
						1/2# 20/40 9180 psi at 15.8 bpm
						1# 20/40 9150 psi at 15.8 bpm
						Start Flush, 9300 psi at 16.1 bpm
						End Flush 9700 psi at 16.5 bpm
						Isip 6800 psi, Forced close with a 20/64 choke
						Pumped 28,000# AcFrac Blac Sand with 1129 bbls 40# Hybor Gel
11/14/2001	06:00 - 07:00	1.00	PTST	2		FLOW TEST
	07:00 - 08:00	1.00	PTST	2		FLOW TEST
	08:00 - 09:00	1.00	CIRC	1		CIRCULATE/CONDITION
	09:00 - 09:30	0.50	DEQ	2		SET/TEST/RELEASE PACKER
	09:30 - 14:00	4.50	TRP	2		TRIP
	14:00 - 15:00	1.00				unload tbg
	15:00 - 16:30	1.50	CIRC	1		CIRCULATE/CONDITION



### Operations Summary Report

Legal Well Name: HALANDRAS 1  
 Common Well Name: HALANDRAS 1  
 Event Name: COMPLETION  
 Contractor Name: NO CONTRACTOR  
 Rig Name: NO RIG  
 Start: 9/7/2001  
 Rig Release: Group:  
 Spud Date: 6/21/2001  
 End: 6/13/2002

Date	From - To	Hours	Code	Sub Code	Phase	Description of Operations
11/14/2001	16:30 - 17:15 17:15 -	0.75	DEQ	2		SET/TEST/RELEASE PACKER FTP not measurable, removed choke, flowed slugs of fluid, released packer, RIH, reversed out 5 jts sand to 12050'. Reset packer at 11670. end of tbg at 11740'. SWI. Ready to swab
11/15/2001	11:00 - 17:00	6.00	SWAB	1		SWAB/ Pulled 8 runs, recovered 65 bbls, left fluid level at 3000'
11/16/2001	07:00 - 11:00	4.00	SWAB	1		SWAB/ Pulled 8 runs, recovered 85 bbls.
	11:00 - 13:00	2.00	LOG	4		OTHER WL WORK/Pulled Gamma Ray from tag at 12002' to 11,600'
	13:00 - 17:00	4.00	SWAB	1		SWAB/Pulled 8 runs, recovered 85 bbls Gas cut Frac fluid. Fluid level at 7000' at end of day.
11/17/2001	07:00 - 17:00	10.00	SWAB	1		SWAB/Fluid level at 1900'. Pulled 22 swab runs with gas cut fluid recovered, (230 bbls gas cut fluid) Fluid level at 10,300' at end of day, Left well SI
11/19/2001	07:00 - 08:00	1.00	WCL	2		BLOW DOWN WELL
	08:00 - 17:00 00:00 -	9.00	SWAB	1		SWAB SICP 1300 psi, Flowed to pit, RIH with swab, tagged fluid at 3900' Pulled 22 runs with gas cut fluid, recovered 150 bbls frac fluid 8' lazy flare, Left well SI.
11/20/2001	06:00 - 07:00	1.00	PTST	5		SI FOR BUILD UP
	07:00 - 07:30	0.50	WCL	2		BLOW DOWN WELL
	07:30 - 08:30	1.00	WCL	1		KILL WELL
	08:30 - 17:00	8.50	TRP	2		TRIP
	17:00 - 18:30	1.50	PERF	2		WL PERFORATE
	18:30 - 20:00	1.50	LOG	4		OTHER WL WORK
11/21/2001	07:30 - 14:30	7.00	TRP	2		TRIP
	14:30 - 15:30	1.00	DEQ	2		SET/TEST/RELEASE PACKER
	15:30 - 16:30	1.00	STIM	1		BREAK DOWN/ACID
	16:30 - 18:00	1.50	PTST	2		FLOW TEST
11/23/2001	06:00 - 18:00	12.00	PTST	2		FLOW TEST/ FTP 70 psi, 20/64 choke, rate 154 mcf
11/26/2001	06:00 - 07:00	1.00	PTST	2		FLOW TEST
	07:00 - 08:00	1.00	WCL	1		KILL WELL
	08:00 - 08:30	0.50	DEQ	2		SET/TEST/RELEASE PACKER
	08:30 - 10:00	1.50	CIRC	1		CIRCULATE/CONDITION
	10:00 - 17:00 00:00 -	7.00	TRP	5		PU/LD TUBING FCP not measurable, filled tbg, Released Packer, RIH, tagged, reversed out rat hole. POOH, Laid down 70 joints tbg.
11/27/2001	07:00 - 17:00 00:00 -	10.00	TRP	5		PU/LD TUBING Laid down 3-1/2 tbg, Killed tbg as needed. Some down time with Froze up BOP
11/28/2001	07:00 - 11:30	4.50	TRP	2		TRIP
	11:30 - 12:59	1.48	STIM	2		SET FRAC EQUIPMENT
	12:59 - 14:53	1.90	STIM	3		FRACTURE
	14:53 - 18:00	3.12	PTST	2		FLOW TEST POOH, with remainder of 3-1/2" tbg, stood tbg in rig. RU Halliburton, Started Frac With 40# Hybor, run 4000 gal .5# scour stage, at end of Hybor pad, cut chemicals and dropped to a 15# Linear fluid, run .5 ppg, 10,000 gal, .75ppg 15,000 gal, 1ppg, screened out with 7300 gal on perms, flowed to pit on a 20/64 choke
11/29/2001	06:00 - 18:00	12.00	PTST	2		FLOW TEST
11/30/2001	06:00 - 14:00	8.00	PTST	2		FLOW TEST
	14:00 - 16:00	2.00	LOG	4		OTHER WL WORK
	16:00 - 17:00	1.00	PTST	2		FLOW TEST
	-					10:00 am, FCP 105 psi, Flowed on 1/2" choke to unload fluid.



## Operations Summary Report

Legal Well Name: HALANDRAS 1  
 Common Well Name: HALANDRAS 1  
 Event Name: COMPLETION  
 Contractor Name: NO CONTRACTOR  
 Rig Name: NO RIG

Start: 9/7/2001  
 Rig Release: Group:  
 Rig Number:

Spud Date: 6/21/2001  
 End: 6/13/2002

Date	From - To	Hours	Code	Sub Code	Phase	Description of Operations
11/30/2001	-					(Caught water Sample) RIH with Wireline, Tagged at 12,630'. Left well flowing on a 20/64 chokes
12/1/2001	06:00 - 18:00	12.00	PTST	2		FLOW TEST
12/3/2001	06:00 - 08:00	2.00				FCP 100 psi with intermittent slugs of fluid
	08:00 - 10:00	2.00	TRP	2		TRIP
	10:00 - 14:00	4.00	TRP	5		PU/LD TUBING
	14:00 - 18:00	4.00	PTST	2		FLOW TEST
	-					RIH with 70 stands 3-1/2" Frac String, and laid down tbg. Left well flowing on a 20/64 choke, flaring
12/4/2001	07:00 - 18:00	11.00	PTST	2		FLOW TEST
	-					FCP 100 psi, 20/64 choke, flaring
12/5/2001	06:00 - 07:00	1.00	PTST	2		FLOW TEST
	07:00 - 10:00	3.00	LOC	4		RIG UP/DOWN
	-					FCP 80 psi, RD MWS #3 and Moved rig off location Operations Ceased until 12/17/01
12/14/2001	06:00 -					FCP 80 psi, RD MWS #3 and Moved rig off location Operations Ceased until 12/17/01
12/18/2001	06:00 - 07:00	1.00	PTST	2		FLOW TEST
	07:00 - 10:43	3.72	STIM	2		SET FRAC EQUIPMENT
	10:43 - 11:48	1.08	STIM	1		BREAK DOWN/ACID
	11:48 - 13:23	1.58	STIM	3		FRACTURE
	13:23 - 18:00	4.62	PTST	2		FLOW TEST
	-					FCP 100 psi, RU Halliburton, Pumped 2250 gal 15% HCL, dropped 30 ball sealers, 280 sks 100 mesh. 125 sks 30/50 Econo-prop, 275 sks 20/40 Econo-prop. Screened out with 4# 20/40 on perms.
12/19/2001	06:00 - 15:30	9.50	PTST	2		FLOW TEST
	15:30 - 17:00	1.50	PERF	2		WL PERFORATE
12/20/2001	08:00 - 09:30	1.50	PERF	2		WL PERFORATE
	09:30 - 11:00	1.50	LOG	4		OTHER WL WORK
	11:00 - 12:30	1.50	PERF	2		WL PERFORATE
12/21/2001	06:00 - 06:01	0.02	PTST	5		SI FOR BUILD UP
	06:01 - 08:31	2.50	STIM	2		SET FRAC EQUIPMENT
	08:31 - 10:10	1.65	STIM	3		FRACTURE
	10:10 - 18:00	7.83	PTST	2		FLOW TEST
	-					SICP 950 psi, Sand Frac MV-2, Pumped 1500 gallons 15% HCL, Pumped 179 sks 100 mesh sand, 2508 sks 20/40 mesh Econoprop, 3324 bbls 2% KCL water. Average 6900 psi at 41 bpm Final 7030 psi at 45.5 bpm. 3:00 pm, FCP 1100 Psi
	15:00 -					
12/22/2001	06:00 - 18:00	12.00	PTST	2		FLOW TEST
	-					09:00, FCP 450 psi, Trace of gas 16:00, FCP 140 psi, Trace of gas
12/27/2001	06:00 - 12:00	6.00	PTST	2		FLOW TEST
	12:00 - 13:00	1.00	PERF	1		RIG UP PERFORATORS
	13:00 - 14:00	1.00	PERF	2		WL PERFORATE
	14:00 - 15:30	1.50	LOG	4		OTHER WL WORK
	15:30 - 17:00	1.50	PTST	2		FLOW TEST
12/28/2001	06:00 - 06:30	0.50	PTST	5		SI FOR BUILD UP/ SICP 545 psi
	06:30 - 08:45	2.25	STIM	2		SET FRAC EQUIPMENT



## Operations Summary Report

Legal Well Name: HALANDRAS 1  
 Common Well Name: HALANDRAS 1  
 Event Name: COMPLETION  
 Contractor Name: NO CONTRACTOR  
 Rig Name: NO RIG

Start: 9/7/2001  
 Rig Release:  
 Rig Number:

Spud Date: 6/21/2001  
 End: 6/13/2002  
 Group:

Date	From - To	Hours	Code	Sub Code	Phase	Description of Operations
12/28/2001	08:45 - 10:00	1.25	STIM	3		FRACTURE/ Pumped 1000 gal 7-1/2% HCL Pumped 3042 bbls 40# hybor gel Pumped 160 sks 100 mesh sand Pumped 2013 sks 20/40 mesh sand Average 45 bpm at 4700 psi Final 50 bpm at 5700 psi Forced close with a 20/64 choke FLOW TEST/ 3:30 pm, FCP 1180 psi
	10:00 - 18:00	8.00	PTST	2		
12/29/2001	06:00 - 09:00	3.00	PTST	2		FLOW TEST
	09:00 - 11:00	2.00	LOC	4		RIG UP/DOWN
	11:00 - 12:30	1.50	WOT	4		WAITING ON EQUIP/TOOLS
	12:30 -					
	-					FCP 200 psi, trace of gas, MI & RU MWS #3 Waited for Weatherford, Arrived with wrong Hammer Wrenches to change pipe rams back to 2-3/8" Left Well Flowing to pit on a 20/64 choke
12/31/2001	06:00 - 07:00	1.00	PTST	2		FLOW TEST
	07:00 - 08:30	1.50	BOP	1		NU/ND BOP
	08:30 - 11:00	2.50	PTST	2		FLOW TEST
	-					7am, FCP 375 psi, Flowed on 1/2" choke, Changed pipe rams. 11 am, FCP 200 psi, mostly water, caught sample, Left flowing to pit on a 20/64 choke.
1/2/2002	06:00 - 07:00	1.00	PTST	2		FLOW TEST
	07:00 - 10:00	3.00	PTST	2		FLOW TEST
	10:00 - 17:00	7.00	TRP	5		PU/LD TUBING
1/4/2002	06:00 - 07:00	1.00	PTST	5		SI FOR BUILD UP
	07:00 - 09:00	2.00	RIG	5		THAW EQUIPMENT
	09:00 - 12:00	3.00	REAM	2		WASH SAND/FILL
	12:00 - 13:00	1.00	DEQ	3		SPACEOUT/LAND TUBING
	13:00 - 14:00	1.00				equilized bit sub
	14:00 - 17:00	3.00	SWAB	1		SWAB
1/5/2002	06:00 - 07:00	1.00	PTST	5		SI FOR BUILD UP
	07:00 - 09:30	2.50	SWAB	1		SWAB
	09:30 - 13:30	4.00	PTST	2		FLOW TEST
	13:30 - 18:00	4.50	PTST	2		FLOW TEST
	-					CP 200 psi, pulled 5 swab runs, well started flowing. 1pm, CP 500 psi, FTP 200 psi on a 32/64 choke. Left well flowing on a 20/64 choke.
1/7/2002	06:00 - 07:00	1.00	PTST	5		SI FOR BUILD UP
	07:00 - 08:00	1.00	PTST	2		FLOW TEST
	08:00 - 10:00	2.00	SWAB	1		SWAB
	10:00 - 13:00	3.00	PTST	2		FLOW TEST
	13:00 - 18:00	5.00	PTST	2		FLOW TEST
	-					CP 3200 psi, TP 1600 psi, choke plugged, Flowed. Pulled 3 swab runs. flowed to pit. Left flowing to pit on a 20/64 choke. 1 pm, CP 1950 psi, FTP 800 psi.
1/8/2002	06:00 - 07:00	1.00	PTST	2		FLOW TEST
	07:00 - 08:00	1.00	BOP	1		NU/ND BOP
	08:00 - 09:00	1.00	WHD	2		NU/ND TREE
	09:00 - 12:00	3.00	PTST	2		FLOW TEST
	12:00 - 13:30	1.50	LOC	4		RIG UP/DOWN



## Operations Summary Report

Legal Well Name: HALANDRAS 1  
 Common Well Name: HALANDRAS 1  
 Event Name: COMPLETION  
 Contractor Name: NO CONTRACTOR  
 Rig Name: NO RIG

Start: 9/7/2001  
 Rig Release:  
 Rig Number:

Spud Date: 6/21/2001  
 End: 6/13/2002  
 Group:

Date	From - To	Hours	Code	Sub Code	Phase	Description of Operations
1/8/2002	13:30 - 18:00	4.50	PTST	2		FLOW TEST 7am, CP 1275 psi, FTP 5000 psi, ND Stripped off BOP, Killed tbg, removed TIW valve, NU Tree. Pulled 3 swab runs to kick well off. RD MWS #3.
1/9/2002	06:00 - 18:00	12.00	PTST	2		5pm, CP 1600 psi, FTP 1050 psi. Left flowing on a 20/64 choke
1/10/2002	06:00 - 18:00	12.00	PTST	2		FLOW TEST
1/11/2002	06:00 - 18:00	12.00				5pm, CP 900 psi, FTP 350 psi, Flaring
1/12/2002	06:00 - 18:00	12.00	PTST	2		5pm, CP 900 psi, FTP 350 psi, Flaring
1/13/2002	06:00 - 18:00	12.00	PTST	2		FLOW TEST
1/14/2002	06:00 - 18:00	12.00	PTST	2		12noon, CP 820 psi, FTP 340 psi, flaring
1/15/2002	07:45 -					FLOW TEST
1/16/2002	06:00 -					FCP 780 psi, FTP 310 psi, flaring
1/17/2002	06:00 -					FCP 795 psi, FTP 320psi @ 7:45am; & FCP 780psi, FTP-310psi @ 3:55pm.
1/18/2002	06:00 -					FCP 780 psi, FTP 310 psi @ 7:30am; & FCP 760psi, FTP 305psi @ 3:50pm.
1/19/2002	06:00 -					FCP 740 psi, FTP 280 psi @ 7:30am; & FCP 745psi, FTP 280psi @ 3:30pm.
1/20/2002	06:00 -					FCP 745 psi, FTP 305psi @ 7:30am; & FCP 735psi, FTP 295psi @ 3:30pm.
1/21/2002	06:00 -					NO FLOW REPORT.- WEEKEND.
1/22/2002	06:00 -					NO FLOW REPORT/ WEEKEND..
1/23/2002	06:00 -					FCP 715 psi, FTP 255psi @9:00am; & FCP 735 psi, FTP 270 psi @3:30 pm.
1/24/2002	06:00 -					FCP 710 psi, FTP 260psi @8:00am; & FCP 710 psi, FTP 260 psi @3:15 pm.
1/25/2002	06:00 -					FCP 700 psi, FTP 260psi @8:00am; & FCP 700 psi, FTP 260 psi @3:30 pm.
1/26/2002	06:00 -					FCP 705 psi, FTP 260psi @7:20am; & FCP 700 psi, FTP 250 psi @3:30pm.
1/27/2002	06:00 -					FCP 695 psi, FTP 245psi @8:00am; & FCP 695 psi, FTP 255 psi @2:30pm.
1/28/2002	06:00 -					Weekend--No Flow Report.
1/29/2002	06:00 -					Weekend--No Flow Report.
1/30/2002	06:00 -					FCP 690 psi, FTP 255 psi @ 8am; & FCP 685psi, FTP 245 psi @3pm.
1/31/2002	06:00 -					FCP 690 psi, FTP 230 psi @ 12 pm.
2/1/2002	06:00 -					FCP 670 psi, FTP230 psi @7:20am. FCP 680 psi, FTP 235 psi @1:00pm
2/2/2002	06:00 -					FCP 660psi, FTP 200 psi @9:15am. FCP 675 psi, FTP 240psi @3:00pm
2/3/2002	06:00 -					FCP 675psi, FTP 220 psi @8:30am. FCP 680 psi, FTP 225psi @3:00pm
2/4/2002	06:00 -					No Pressures Reported Today
2/5/2002	06:00 -					No Pressures Reported Today
2/6/2002	06:00 -					FCP 665 psi, FTP 225 psi @ 8:15 am
2/7/2002	06:00 -					No Pressures Reported Today
2/8/2002	06:00 -					No Pressures Reported Today
2/9/2002	06:00 -					FTP 215 psi, FCP 665 psi @7:40am; FTP 210 psi, FCP 665 psi @3:30pm
						No Pressures Reported Today
						FTP 220 psi, FCP 660 psi @ 9:30 am.
						No Pressures Reported Today



## Operations Summary Report

Legal Well Name: HALANDRAS 1  
 Common Well Name: HALANDRAS 1  
 Event Name: COMPLETION  
 Contractor Name: NO CONTRACTOR  
 Rig Name: NO RIG

Start: 9/7/2001  
 Rig Release:  
 Rig Number:

Spud Date: 6/21/2001  
 End: 6/13/2002  
 Group:

Date	From - To	Hours	Code	Sub Code	Phase	Description of Operations
2/10/2002	06:00 -					No Pressures Reported Today
2/11/2002	06:00 -					FTP 205 psi, FCP 650 psi @ 12:00 pm.
2/12/2002	06:00 -					FTP 260 psi, FCP 640 psi @ 9:15 am.
2/13/2002	06:00 -					FTP 200 psi, FCP 640 psi @ 11:40 am.
2/14/2002	06:00 -					FTP 190 psi, FCP 630 psi @ 11:00 am.
2/15/2002	06:00 -					FTP 195 psi, FCP 635 psi @ 9:45 am.
2/16/2002	06:00 -					No pressures reported today.
2/17/2002	06:00 -					No pressures reported today.
2/18/2002	06:00 -					No pressures reported today.
2/19/2002	06:00 -					Pressures: No pressures reported today.
2/20/2002	06:00 -					Pressures: No pressures reported today.
2/21/2002	06:00 -					Pressures: No pressures reported today.
2/22/2002	06:00 -					FTP 180 PSI, FCP 620 PSI @ 12:00 PM.
2/23/2002	06:00 -					No report.
2/24/2002	06:00 -					No report.
2/25/2002	06:00 -					FTP 185 psi, FCP 620 psi @ 9:30 am.
2/26/2002	06:00 -					FTP 180 psi, FCP 610 psi @ 9:00 am.
2/27/2002	06:00 -					No Report--Could not get to Well due to snow.
2/28/2002	06:00 -					FTP 180 PSI, FCP 610 PSI @ 11:45 AM.
3/1/2002	06:00 -					FTP 185 PSI, FCP 615 PSI @ 1:45 PM.
3/2/2002	06:00 -					NO REPORT - WEEKEND.
3/3/2002	06:00 -					NO REPORT - WEEKEND.
3/4/2002	06:00 -					FTP 190 psi, FCP 610 psi @ 3:40 Pm.
3/5/2002	06:00 -					FTP 180 psi, FCP 600 psi @ 8:30 am.
3/6/2002	06:00 -					FTP 180 psi, FCP 600 psi @ 8:00 am.
3/7/2002	06:00 -					FTP 175 psi, FCP 600 psi @ 8:00 am.
3/8/2002	06:00 -					NO REPORT--Unable to get to well because of snow on road.
3/9/2002	06:00 -					NO REPORT--Unable to get to well because of snow on road.
3/10/2002	06:00 -					NO REPORT--Unable to get to well because of snow on road.
3/11/2002	06:00 -					NO REPORT--Unable to get to well because of snow on road.
3/12/2002	06:00 -					NO REPORT--Unable to get to well because of snow on road.
3/13/2002	06:00 -					FTP 180 psi, FCP 605 psi @ 11:30 am.
3/14/2002	06:00 -					No Report due to excess snow on roads.
3/15/2002	06:00 -					FTP 175 psi, FCP 600 psi @ 3:00 pm.
3/16/2002	06:00 -					No Report on Weekend.
3/17/2002	06:00 -					No Report on Weekend.
3/18/2002	06:00 -					FTP 175 psi, FCP 600 psi @ 12:00 pm.
3/19/2002	06:00 -					NO REPORT.
3/20/2002	06:00 -					FTP 175 psi, FCP 600 psi @ 11:30 pm.
3/21/2002	06:00 -					FTP 175 psi, FCP 600 psi @ 12:00 pm.
3/22/2002	06:00 -					FTP 175 psi, FCP 610 psi @ 8:30 AM.
3/23/2002	06:00 -					NO REPORT.
3/24/2002	06:00 -					NO REPORT.
3/25/2002	06:00 -					FTP 175, FCP 600 @ 9:00 AM.
3/26/2002	06:00 -					FTP 175 psi, FCP 600 psi @ 8:00 AM.
3/27/2002	06:00 -					FTP 170 psi, FCP 595 psi @ 8:00 AM.
3/28/2002	06:00 -					FTP 175 psi, FCP 595 psi @ 8:00 AM.
3/29/2002	06:00 -					FTP 170 psi, FCP 600 psi @ 8:00 AM.
3/30/2002	06:00 -					NO REPORT TODAY.
3/31/2002	06:00 -					NO REPORT TODAY.
4/1/2002	06:00 -					FTP 175 PSI, FCP 605 PSI @ 2:00 PM.
4/2/2002	06:00 -					FTP 175 PSI, FCP 600 PSI @ 11:30 AM.
4/3/2002	06:00 -					FTP 185 PSI, FCP 605 PSI @ 11:30 AM.



## Operations Summary Report

Legal Well Name: HALANDRAS 1  
 Common Well Name: HALANDRAS 1  
 Event Name: COMPLETION  
 Contractor Name: NO CONTRACTOR  
 Rig Name: NO RIG

Start: 9/7/2001  
 Rig Release:  
 Rig Number:

Spud Date: 6/21/2001  
 End: 6/13/2002  
 Group:

Date	From - To	Hours	Code	Sub Code	Phase	Description of Operations
4/4/2002	06:00 -					FTP 175 PSI, FCP 605 PSI @ 12:00 AM.
4/5/2002	06:00 -					FTP 175 PSI, FCP 605 PSI @ 12:00 AM.
4/6/2002	06:00 -					No report.
4/7/2002	06:00 -					No report.
4/8/2002	06:00 -					FTP 170 PSI, FCP 605 PSI @ 11:00 AM.
4/9/2002	06:00 -					FTP 170 PSI, FCP 605 PSI @ 11:00 AM.
4/10/2002	06:00 -					FTP 170 PSI, FCP 600 PSI @ 11:30 AM.
4/11/2002	06:00 -					FTP 175 PSI, FCP 605 PSI @ 9:30 AM.
4/12/2002	06:00 -					FTP 175 psi, FCP 605 psi, 12:00 AM.
4/13/2002	06:00 -					NO REPORT.
4/14/2002	06:00 -					NO REPORT.
4/15/2002	06:00 -					FTP 170, FCP 605, 9:15 AM.
4/16/2002	06:00 -					FTP 175, FCP 600, 11:00 AM.
4/17/2002	06:00 -					FTP 175, FCP 600, 12:12 PM.
4/18/2002	06:00 -					FTP 185, FCP 605, 12:30 PM.
4/19/2002	06:00 -					FTP 175, FCP 605, 11:30 AM.
4/20/2002	06:00 -					WEEKEND--NO REPORT
4/21/2002	06:00 -					WEEKEND--NO REPORT
4/22/2002	06:00 -					FTP 180, FCP 605, @ 12:30 PM.
4/23/2002	06:00 -					FTP 175, FCP 605, @ 2:00 PM.
4/24/2002	06:00 -					FTP 175, FCP 605, @ 2:30 PM.
4/25/2002	06:00 -					FTP 170, FCP 605, @ 12:30 PM.
4/26/2002	06:00 -					FTP 170, FCP 605, @ 2:30 PM.
4/27/2002	06:00 -					Weekend--No Report
4/28/2002	06:00 -					Weekend--No Report
4/29/2002	06:00 -					FTP 175 psi, FCP 605 psi, @ 11:30 am.
4/30/2002	06:00 -					FTP 175 psi, FCP 605 psi, @ 12:30 pm.T
5/1/2002	06:00 -					FTP 180 psi, FCP 605 psi, @ 12:30 pm.
5/2/2002	06:00 -					FTP 175 psi, FCP 605 psi, @ 1:30 pm.
5/3/2002	06:00 -					FTP 175 psi, FCP 605 psi, @ 12:00 pm.
5/4/2002	06:00 -					No Report.
5/5/2002	06:00 -					No Report.
5/6/2002	06:00 -					FTP 165 psi, FCP 605 psi, @ 1:30 PM.
5/7/2002	06:00 - 18:00	12.00	PTST	2C		CP 610 psi, FTP 180 psi. Changed flow lines to flare on top of water Left flaring to pit on a 20/64 choke CP 610 psi, FTP 180 psi.
5/8/2002	06:00 - 14:00	8.00	PTST	2C		
5/9/2002	14:00 - 17:00	3.00	LOC	4C		MI and RU Monument Well Service Rig #7
	06:00 - 07:00	1.00	LOC	4C		FCP 600 psi, FTP 170 psi
	07:00 - 08:00	1.00	WCL	2C		Flowed csg to pit
	08:00 - 09:00	1.00	BOP	1C		ND Tree, NU BOP, Pulled Hanger.
5/10/2002	09:00 - 10:00	1.00	DEQ	4C		PU 2 jts tbg, Tagged sand at 11750'
	10:00 -		TRP	2C		POOH with tbg, Laid down bit sub
	06:00 - 07:00	1.00	PTST	2C		FCP 40 psi, TP 800 psi, RU Foam unit, broke circulation with Air
	07:00 - 10:30	3.50	TRP	2C		RIH, tagged and cleaned out sand to CIBP at 12,050'
	10:30 - 12:00	1.50	CIRC	1C		circulated for 1.5 hrs to clean up well
12:00 - 14:00	2.00	TRP	2C		Pulled 33 stands tbg, broke out with wrenches, (Tongs broke) Land SN at 9970'. RU to swab, pulled 3 runs. Last 2 runs from SN 1st run, recovered 5 bbls. 2nd and 3rd runs dry	
	14:00 - 17:00	3.00	SWAB	1C		



## Operations Summary Report

Legal Well Name: HALANDRAS 1  
 Common Well Name: HALANDRAS 1  
 Event Name: COMPLETION  
 Contractor Name: NO CONTRACTOR  
 Rig Name: NO RIG

Start: 9/7/2001  
 Rig Release:  
 Rig Number:

Spud Date: 6/21/2001  
 End: 6/13/2002  
 Group:

Date	From - To	Hours	Code	Sub Code	Phase	Description of Operations
5/10/2002	17:00 - 17:30	0.50	PTST	2C		CP at 400 psi, FTP 30 psi on a 20/64 choke
5/11/2002	06:00 - 07:00	1.00	PTST	2C		CP at 710 psi, FTP 90 psi on a 20/64 choke, rate 198 mcf/d
	07:00 - 15:00	8.00	LOG	3C		RU Schlumberger, run spinner survey across, Cameo. MV-1, MV-2, MV-3
5/13/2002	07:00 - 09:00	2.00	TRP	2C		RIH with tbg, tagged at CIBP at 12,050'
	09:00 - 12:30	3.50	TRP	2C		POOH with tbg
	12:30 - 16:00	3.50	TRP	2C		Killed well with 30 bbls KCL water PU and RIH with RBP, Set Plug at 11,250'. Land tbg at 11216'
	16:00 - 17:00	1.00	SWAB	1C		RU to swab, Tagged Fluid at 7500'. Pulled 1 run from 10,000'
5/14/2002	06:00 - 07:00	1.00	PTST	2C		Left well open to pit on a 20/64 choke
	07:00 - 09:00	2.00	SWAB	1C		CP 1100 psi, tbg dead RU to swab, Tagged fluid at 5200'
	09:00 - 11:00	2.00	PTST	2C		Pulled 2 runs, Well flowed to 11 am
	11:00 - 12:30	1.50	SWAB	1C		Pulled 2 swab runs from 10,000' (total fluid at 40 bbls, 10 bbls over kill)
	12:30 - 15:30	3.00	PTST	2C		CP 600 psi, FTP dropped from 140 psi on a 1/2 choke to less than 50 psi
	15:30 - 17:30	2.00	SWAB	1C		Pulled 2 swab runs from 10,000'. Left well flowing to tank on a 1/2" choke
5/15/2002	06:00 - 07:00	1.00	PTST	2C		CP 430 psi, FTP 90 psi. Recovered 15 bbls water to tank
	07:00 - 12:00	5.00	PTST	2C		Tbg logged off
	12:00 - 13:00	1.00	SWAB	1C		Pulled 2 swab runs to kick well off, recovered 8.25 bbls
	13:00 - 15:30	2.50	PTST	2C		CP 650 psi, FTP 250 psi
	15:30 - 16:30	1.00	SWAB	1C		CP 425 psi, FTP at 40 psi, and dropping
	16:30 - 17:00	0.50	PTST	2C		Pulled 1 swab run, recovered 3.3 bbls water
5/16/2002	06:00 - 07:00	1.00	PTST	2C		CP 445 psi, FTP 90 psi, left flowing to tank on a 1/2" choke
	07:00 - 08:00	1.00	PTST	2C		CP 760 psi, FTP 73 psi, Recovered 3.3 bbls overnight.
						Unable to RIH with swab, Removed choke and unloaded tbg.
						Flowed to tanks, with 3/4 choke for 1/2 hr
						CP 725 psi, FTP 110 psi, Recovered 6.6 bbls water
						switched back to 1/2" choke
						CP 520 psi, FTP 240 psi
						CP 350 psi, FTP 60 psi, recovered 1.6 bbls
						CP 370 psi, FTP 20 psi, no fluid
						Pulled 1 swab run, recovered 3.3 bbls water
						CP 400 psi, FTP 160 psi
						CP 350 psi, FTP 38 psi, recovered 1.6 bbls water
						CP 390 psi, FTP 18 psi. no fluid
						Pulled 1 swab run, recovered 1.6 bbls water
					CP 400 psi, FTP 120 psi	
					CP 350 psi, FTP 40 psi, no fluid recovered	
					CP 400 psi, FTP 16 psi, No fluid recovered	
					Pulled 1 swab run, recovered 1.6 bbls fluid	
					CP 400 psi, FTP 70 psi	
					CP 350 psi, FTP 72 psi.	
					Left well flowing to tank on a 1/2" plate	
5/17/2002	06:00 - 07:00	1.00	PTST	2C		CP 700 psi, FTP 28 psi, recovered 1.6 bbls overnight
	07:00 - 08:00	1.00	PTST	2C		CP 720 psi, FTP 48 psi,
	08:00 - 09:00	1.00	PTST	2C		CP 650 psi, FTP 130 psi
	09:00 - 10:00	1.00	PTST	2C		CP 550 psi, FTP 150 psi, Recovered 6.6 bbls in 3 hrs



## Operations Summary Report

Legal Well Name: HALANDRAS 1  
 Common Well Name: HALANDRAS 1  
 Event Name: COMPLETION  
 Contractor Name: NO CONTRACTOR  
 Rig Name: NO RIG

Start: 9/7/2001  
 Rig Release:  
 Rig Number:

Spud Date: 6/21/2001  
 End: 6/13/2002  
 Group:

Date	From - To	Hours	Code	Sub Code	Phase	Description of Operations
5/17/2002	10:00 - 11:00	1.00	PTST	2C		CP 400 psi, FTP 80 psi
	11:00 - 12:00	1.00	PTST	2C		CP 325 psi, FTP 40 psi
	12:00 - 13:00	1.00	PTST	2C		CP 375 psi, FTP 20 psi, Recovered 1.6 bbls in 3 hrs
	13:00 - 14:00	1.00	PTST	2C		CP 440 psi, FTP 12 psi
	14:00 - 15:00	1.00	PTST	2C		CP 490 psi, FTP 14 psi
	15:00 - 16:00	1.00	PTST	2C		CP 540 psi, FTP 18 psi. Removed 1/2 choke from tbg
	16:00 - 17:30	1.50	DEQ	1C		Vented Csg to pit. Pumped 70 bbs water down tbg RIH, Released RBP, POOH with 20 stands tbg. Left csg vented to pit, sdf weekend
5/20/2002	06:00 - 07:00	1.00	PTST	2C		FCP 95 psi
	07:00 - 11:30	4.50	TRP	2C		POOH with tbg, Laid down plug
	11:30 - 15:00	3.50	TRP	2C		RIH with SN, and 368 jts 2-3/8" EUE tbg Stripped in tbg hanger, landed in well head
	-					KB+ 16.00'
	-					368 jts 2-3/8" EUE tbg 11,664.41' SN, 1.78" ID 1.10' SN, Landed at 11,680.51'
	15:00 - 16:00	1.00	WHD	2C		ND BOP, NU Tree
	16:00 - 17:00	1.00	SWAB	1C		RU to swab, Pulled 1 run. CP at 200 psi at end of day Left tbg open to pit on a 20/64 choke
5/21/2002	06:00 - 07:00	1.00	PTST	5C		CP 1525 psi, tbg dead
	07:00 - 17:00	10.00	SWAB	1C		RU to swab, Tagged fluid level at 5500' Pulled 9 swab runs, Well flowed after 8th run, and last run. CP dropped to 1100 psi at end of day
5/22/2002	17:00 - 18:00	1.00	PTST	2C		Left well open to pit on a 20/64 choke
	06:00 - 07:00	1.00	PTST	2C		CP 1500 psi, tbg dead
	07:00 - 09:00	2.00	SWAB	1C		Pulled 2 runs
	09:00 - 11:00	2.00	PTST	2C		Flowed on a 1/2" choke
	11:00 - 13:00	2.00	SWAB	1C		Pulled 2 runs, Left flowing on a 1/2" choke
	13:00 - 14:00	1.00	LOC	4C		RD Monument well Service Rig #7
	14:00 - 17:00	3.00	PTST	2C		CP 1275 psi, tbg dead, dropped soap sticks, Left tbg open to pit on a 1/2 choke.
5/23/2002	06:00 - 14:00	8.00	PTST	2C		CP 1650 psi, tbg dead
5/24/2002	06:00 - 09:00	3.00	PTST	2C		CP 1800 psi, tbg dead
	09:00 - 12:00	3.00	PTST	5C		Equalized Csg pressure across tbg for 3 hrs
	12:00 - 16:00	4.00	PTST	2C		Flowed tbg to pit on a 20/64 choke
	16:00 - 18:00	2.00	PTST	2C		Tbg dead, CP 1800 psi. Left well equalizing
5/29/2002	06:00 - 13:00	7.00	PTST	5C		CP 2150 psi, TP 2150 psi
	13:00 - 13:30	0.50	PTST	2C		1:30pm, CP 2150 psi, FTP 1450 psi
	13:30 - 14:00	0.50	PTST	2C		2 pm, CP 2000 psi, FTP 1100 psi
	14:00 - 17:00	3.00	PTST	2C		5pm, CP 1480 psi, FTP 975 psi Left well flowing to pit on a 20/64 choke
5/30/2002	06:00 - 09:00	3.00	PTST	2C		9am, CP 825 psi, FTP 240 psi, flaring to pit on a 20/64 choke
	09:00 - 14:00	5.00	PTST	2C		2pm, CP 790 psi, FTP 280 psi, flaring to pit on a 20/64 choke
5/31/2002	06:00 -		PTST	2C		@ 1:00pm, FCP 725 psi, FTP 265 psi.
6/1/2002	06:00 -		PTST	2C		No Report
6/2/2002	06:00 -		PTST	2C		No Report
6/3/2002	06:00 -		PTST	2C		1 pm FCP 650, FTP 185
6/4/2002	06:00 -		PTST	2C		11:30am FCP 645, FTP 185
6/5/2002	06:00 -		PTST	2C		11:30am FCP 635 psi, FTP 180 psi
6/6/2002	06:00 -		PTST	2C		2:15 PM, FCP 630 psi, FTP 175 psi
6/7/2002	06:00 -		PTST	2C		1:30 PM, FCP 670 psi, FTP 200 psi



## Operations Summary Report

Legal Well Name: HALANDRAS 1  
Common Well Name: HALANDRAS 1  
Event Name: COMPLETION  
Contractor Name: NO CONTRACTOR  
Rig Name: NO RIG  
Start: 9/7/2001  
Rig Release:  
Rig Number:  
Spud Date: 6/21/2001  
End: 6/13/2002  
Group:

Date	From - To	Hours	Code	Sub Code	Phase	Description of Operations
6/8/2002	06:00 -		PTST	2C		WEEKEND--NO REPORT.
6/9/2002	06:00 -		PTST	2C		WEEKEND--NO REPORT.
6/10/2002	06:00 -		PTST	2C		1:30 pm, FCP 625 psi, FTP 150 psi.
6/11/2002	06:00 -		PTST	2C		11:25 AM, FCP 610 psi, FTP 150 psi.
6/12/2002	06:00 -		PTST	2C		9:00 AM, FCP 615 psi, FTP 155 psi.
6/13/2002	06:00 -		PTST	2C		8:30 AM, FCP 615 psi, FTP 155 psi.