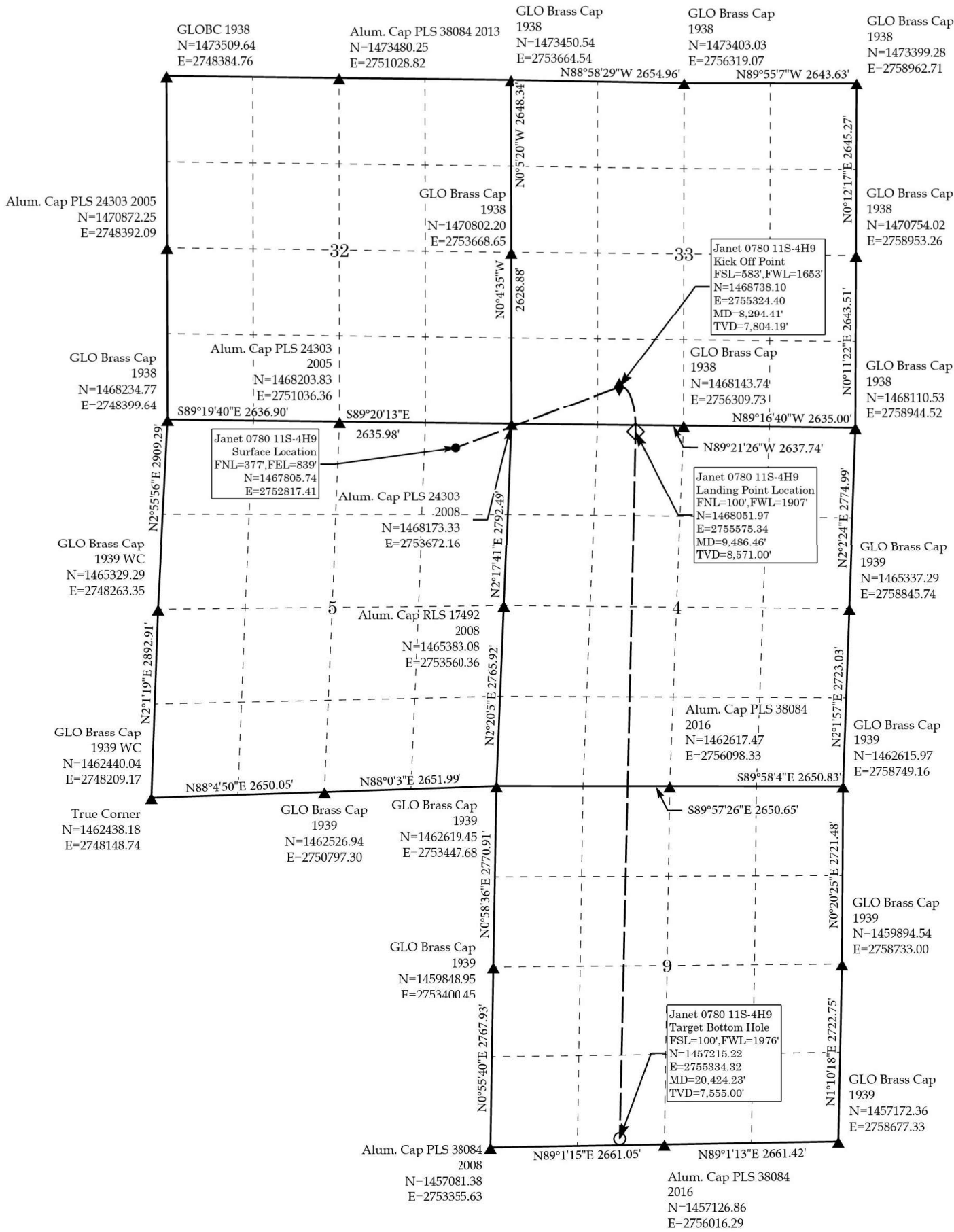


Janet 0780 11S-4H9

As shown in NE¼NE¼ Sec. 5, NW¼NW¼, E½W½ Sec. 4,
E½W½ Sec. 9 T7N R80W 6th P.M. &
S½SW¼ Sec. 33 T8N R80W 6th P.M.
Jackson County, Colorado



<p>NAD 83 Surface Location Lat=40.614118°N Long=106.390344°W STATE PLANE NAD83(CO. NORTH) N=1467805.74 E=2752817.41 Elev. on Graded Pad Surface 8,097.95'</p>
<p>NAD 83 Kick Off Point Lat=40.616746°N Long=106.381348°W STATE PLANE NAD83(CO. NORTH) N=1468738.10 E=2755324.40</p>
<p>NAD 83 Top of Productive Zone Same as Landing Point Location STATE PLANE NAD83(CO. NORTH) Same as Landing Point Location</p>
<p>NAD 83 Landing Point Location Lat=40.614869°N Long=106.380419°W STATE PLANE NAD83(CO. NORTH) N=1468051.97 E=2755575.34</p>
<p>NAD 83 Target Bottom Hole Lat=40.585118°N Long=106.380900°W STATE PLANE NAD83(CO. NORTH) N=1457215.22 E=2755334.32</p>
<p>PDOP=1.114</p>

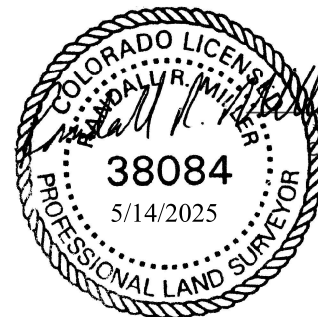
BASIS OF ELEVATION

NAVD88 Computed using GEOID12B as measured using a combination of Static and Kinematic GPS based on an OPUS Solution Report.

BASIS OF BEARINGS

US STATE PLANE 1983 CO NORTH 0501 GRID EPSG: 2231

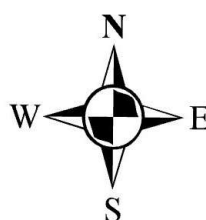
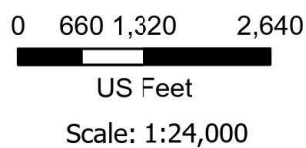
THIS IS TO CERTIFY THAT THE ABOVE PLAT WAS PREPARED FROM FIELD NOTES OF ACTUAL SURVEYS MADE BY ME OR UNDER MY SUPERVISION AND THAT THE SAME ARE TRUE AND CORRECT TO THE BEST OF MY KNOWLEDGE AND BELIEF.



RANDALL R. MILLER
COLORADO PLS NO. 38084

Legend

- Surface Location
- ◆ Kick Off Point
- ◇ Landing Point Location
- Target Bottom Hole
- ▲ Found Corners



NORTH PARK ENGINEERING & CONSULTING, INC.

P.O. BOX 395
WALDEN, CO 80480
(970) 723-3725

DATE OF FIELD WORK: 03/20/2025	DRAWING COMPLETION: 5/11/2025
SURVEYED BY: CURTIS UTLEY	CHECKED BY: RANDALL MILLER
DRAWN BY: ALEX LAWTON	