

FULCRUM ENERGY OPERATING



Location: COLORADO Slot: SLOT#05 JANET 0780 11S-4H9 (377'FNL & 839'FEL, SEC.04)

Field: JACKSON COUNTY (NAD83/TN) Well: JANET 0780 11S-4H9

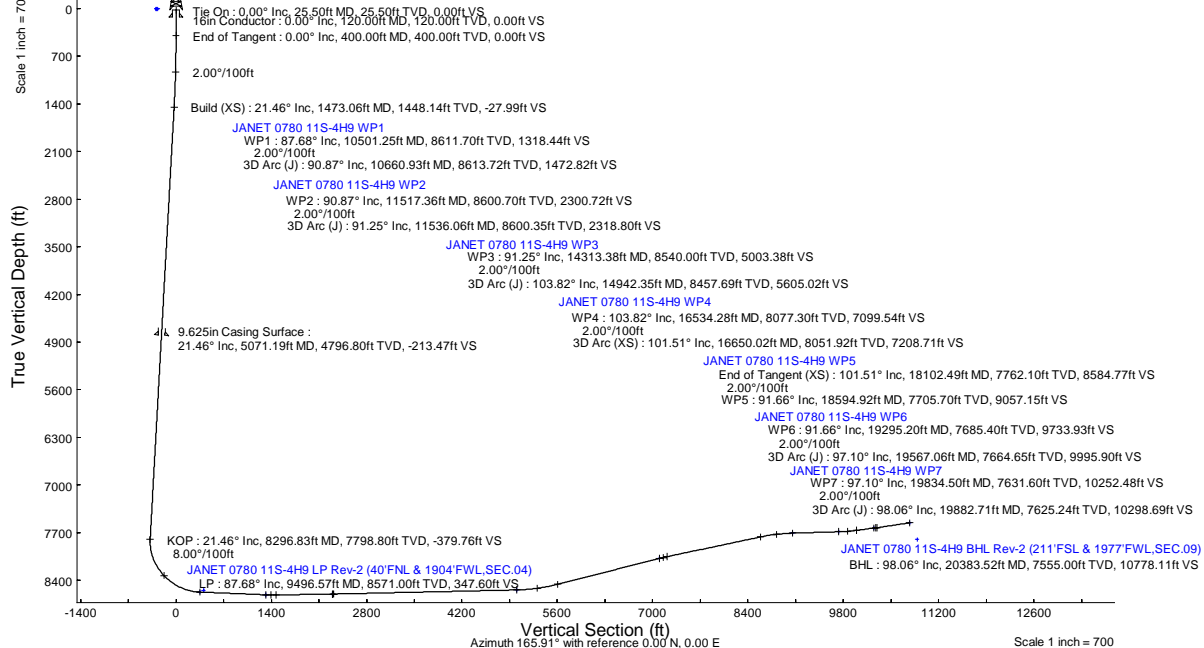
Facility: SEC.04-T07N-R80W Wellbore: JANET 0780 11S-4H9 PWB

Plot reference wellpath is JANET 0780 11S-4H9 (REV-B.0) PWP	Grid System: NAD83 / Lambert Colorado SP, Northern Zone (501), US feet
True vertical depths are referenced to 8099QGL+25.5KB = 8124.5RKB (RKB)	North Reference: True north
Reference wellpath measured depths are referenced to 8099QGL+25.5KB = 8124.5RKB (RKB)	Scale: True distance
(8099QGL+25.5KB = 8124.5RKB) (RKB) to Mean Sea Level: 8124.5 feet	Coordinates are in feet referenced to Slot
Mean Sea Level to Ground level (At Slot: SLO705 JANET 0780 11S-4H9 (377FNL & 839FEL, SEC.04): 0 feet	Depths are in feet
Offset wellpath MDs are referenced to each path's default MD datum	Created by: maitsam01 on 2025-04-30; Database: WA_Denver

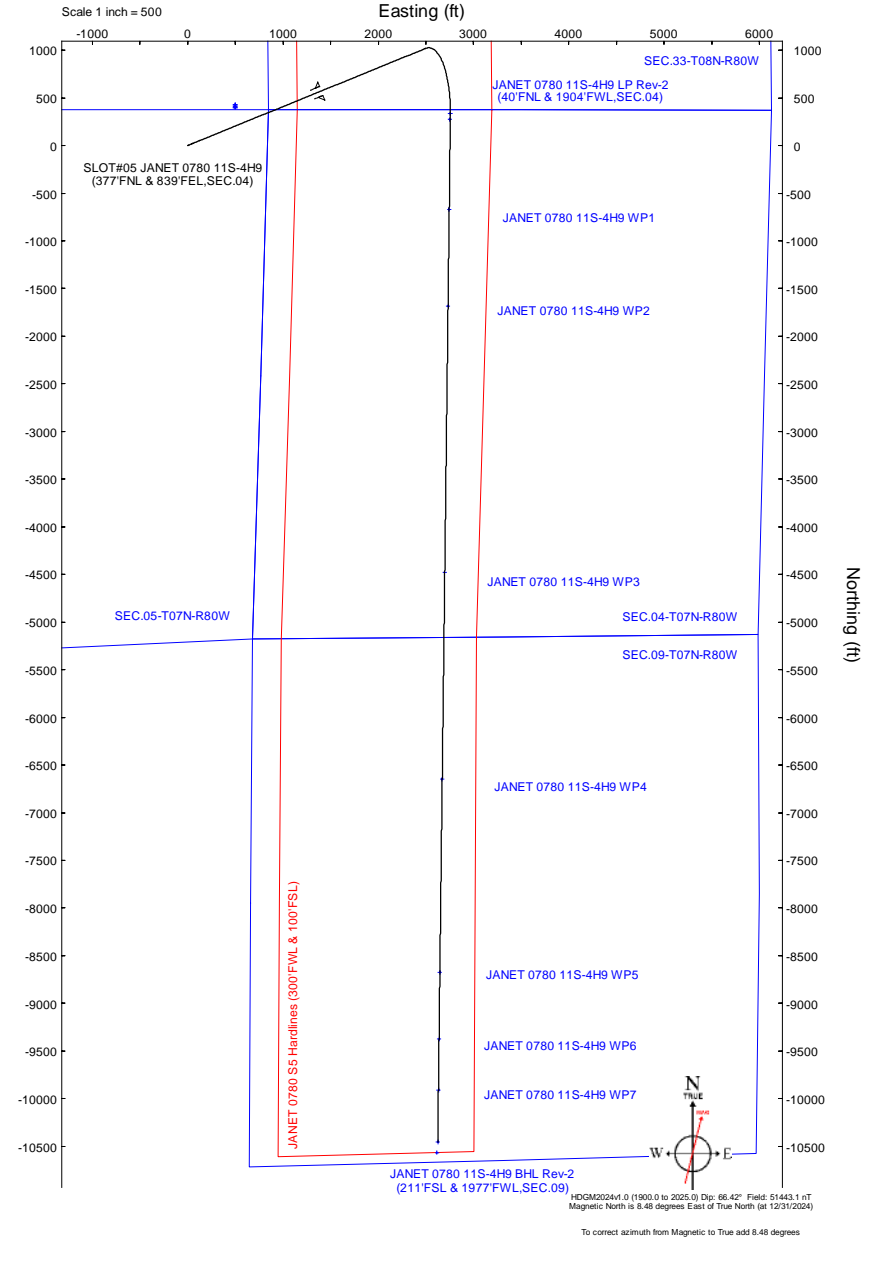
Location Information			
Facility Name	Grid East (US ft)	Grid North (US ft)	Longitude
SEC.04-T07N-R80W	2752737.421	1467805.737	106°23'26.2746"W
Slot	Local N (ft)	Local E (ft)	Longitude
SLOT05 JANET 0780 11S-4H9 (377FNL & 839FEL, SEC.04)	0.81	79.99	106°23'25.2374"W
(8099QGL+25.5KB = 8124.5RKB) (RKB) to Ground level (At Slot: SLO705 JANET 0780 11S-4H9 (377FNL & 839FEL, SEC.04))			8124.5ft
Mean Sea Level to Ground level (At Slot: SLO705 JANET 0780 11S-4H9 (377FNL & 839FEL, SEC.04))			0ft
(8099QGL+25.5KB = 8124.5RKB) (RKB) to Mean Sea Level			8124.5ft

Well Profile Data							
Design Comment	MD (ft)	Inc. (°)	Az (°)	TVD (ft)	Local N (ft)	Local E (ft)	VS (ft)
Tie On	25.50	0.000	67.807	25.50	0.00	0.00	0.00
End of Tangent	400.00	0.000	67.807	400.00	0.00	0.00	0.00
Build (XS)	1473.06	21.461	67.807	1448.14	75.03	183.91	-27.99
KOP	8296.83	21.461	67.807	7798.80	1018.09	2495.57	-379.76
LP	9496.57	87.678	180.641	8571.00	333.56	2756.05	8.00
WP1	10501.25	87.678	180.641	8611.70	-670.23	2744.83	0.00
3D Arc (J)	10660.93	90.871	180.711	8613.72	-829.87	2742.94	2.00
WP2	11517.36	90.871	180.711	8600.70	-1686.13	2732.33	0.00
3D Arc (J)	11536.06	91.245	180.704	8600.35	-1704.84	2732.09	2.00
WP3	14313.38	91.245	180.704	8540.00	-4481.29	2697.99	0.00
3D Arc (J)	14942.35	103.825	180.707	8457.69	-5103.53	2690.33	2.00
WP4	16534.28	103.825	180.707	8077.30	-6649.22	2671.25	0.00
3D Arc (XS)	16650.02	101.510	180.704	8051.92	-6762.13	2669.86	2.00
End of Tangent (XS)	18102.49	101.510	180.704	7762.10	-8185.28	2652.37	0.00
WP5	18594.92	91.661	180.702	7705.70	-8673.82	2646.38	2.00
WP6	19295.20	91.661	180.702	7685.40	-9373.76	2637.80	0.00
3D Arc (J)	19567.06	97.098	180.708	7664.65	-9644.70	2634.47	2.00
WP7	19834.50	97.098	180.708	7631.60	-9910.07	2631.19	0.00
3D Arc (J)	19882.71	98.063	180.700	7625.24	-9957.86	2630.60	2.00
BHL	20383.52	98.063	180.700	7555.00	-10453.68	2624.54	0.00

Survey Program					
Start MD (ft)	End MD (ft)	Tool	Model	Log Name/Comment	Wellbore
25.50	5071.19	OWSG MWD rev2	OWSG MWD rev2 - Standard		JANET 0780 11S-4H9 PWB
5071.19	20412.01	BH AutoTrak Curve/xpress (2019)	BH AutoTrak Curve/xpress (2019) (HRGM, Short spacing)		JANET 0780 11S-4H9 PWB



Targets							
Name	MD (ft)	TVD (ft)	Local N (ft)	Local E (ft)	Grid East (US ft)	Grid North (US ft)	Latitude
SEC.04-T07N-R80W	N/A	6.50	420.14	498.82	2753320.41	1468220.84	40°36'54.9751"N
SEC.05-T07N-R80W	N/A	6.50	410.14	498.82	2753320.31	1468210.84	40°36'54.8783"N
SEC.09-T07N-R80W	N/A	6.50	399.19	498.01	2753319.39	1468199.90	40°36'54.7682"N
SEC.33-T08N-R80W	N/A	6.50	430.14	498.82	2753320.51	1468230.84	40°36'55.0740"N
JANET 0780 11S-4H9 BHL Rev2 (211'FSL & 1977'FWL, SEC.09)	20383.52	7555.00	-10453.68	2624.54	2755336.80	1457326.50	40°35'7.5262"W
JANET 0780 11S-4H9 WP7	19834.50	7631.60	-9910.07	2631.19	2755348.90	1457870.00	40°35'12.8978"N
JANET 0780 11S-4H9 WP6	19295.20	7685.40	-9373.76	2637.80	2755360.90	1458406.20	40°35'18.1972"N
JANET 0780 11S-4H9 WP5	18594.92	7705.70	-8673.82	2646.38	2755376.50	1459106.00	40°35'25.1367"N
JANET 0780 11S-4H9 BHL (100'FSL & 1970'FWL, SEC.09)	N/A	7800.00	-10565.15	2617.11	2755328.25	1457215.11	40°35'6.4248"N
JANET 0780 11S-4H9 WP4	16534.28	8077.30	-6649.22	2671.25	2755421.70	1461130.20	40°35'45.1193"N
JANET 0780 11S-4H9 WP3	14313.38	8540.00	-4481.29	2697.99	2755470.20	1463297.70	40°36'54.5173"N
JANET 0780 11S-4H9 LP (150'FNL & 1898'FWL, SEC.04)	N/A	8546.00	272.22	2750.22	2755570.16	1468050.33	40°36'53.5121"N
JANET 0780 11S-4H9 LP Rev2 (40'FNL & 1904'FWL, SEC.04)	9496.57	8571.00	333.56	2756.05	2755576.60	1468111.60	40°36'54.1191"N
JANET 0780 11S-4H9 WP2	11517.36	8600.70	-1686.13	2732.33	2755532.60	1468092.30	40°36'34.1610"N
JANET 0780 11S-4H9 WP1	10501.25	8611.70	-670.23	2744.83	2755555.30	1467108.00	40°36'44.1994"N
JANET 0780 SS Hardlines (300'FWL & 100'FSL)	N/A	9000.00	399.19	498.01	2753319.39	1468199.90	40°36'54.7682"N



HDM2024v4.0 (1900.0 to 2025.0 Dp: 66.42" Field: 51443.1 NT
Magnetic North is 8.48 degrees East of True North (at 12/31/2024)
To correct azimuth from Magnetic to True add 8.48 degrees



Planned Wellpath Report

JANET 0780 11S-4H9 (REV-B.0) PWP

Page 1 of 9



REFERENCE WELLPATH IDENTIFICATION

Operator	FULCRUM ENERGY OPERATING	Well	JANET 0780 11S-4H9
Field	JACKSON COUNTY (NAD83/TN)	API	05-057-06642
Facility	SEC.04-T07N-R80W	Wellbore	JANET 0780 11S-4H9 PWB
Slot	SLOT#05 JANET 0780 11S-4H9 (377'FNL & 839'FEL,SEC.04)		

REPORT SETUP INFORMATION

Projection System	NAD83 / Lambert Colorado SP, Northern Zone (501), US feet	Software System	WellArchitect® 6.0
North Reference	True	User	Martsam01
Scale	0.999977	Report Generated	3/12/2025 at 2:30:05 PM
Convergence at slot	0.58° West	Database	WA_Denver

WELLPATH LOCATION

	Local coordinates		Grid coordinates		Geographic coordinates	
	North[ft]	East[ft]	Easting[US ft]	Northing[US ft]	Latitude	Longitude
Slot Location	0.81	79.99	2752817.41	1467805.74	40.6141177°	-106.3903437°
Facility Reference Pt			2752737.42	1467805.74	40.6141155°	-106.3906318°
Field Reference Pt			2986049.83	1344849.24	40.2800000°	-105.5500000°

WELLPATH DATUM

Calculation method	Minimum curvature	(8099'GL+25.5'KB = 8124.5'RKB) (RKB) to Facility Vertical Datum	8124.50ft
Horizontal Reference Pt	Slot	(8099'GL+25.5'KB = 8124.5'RKB) (RKB) to Mean Sea Level	8124.50ft
Vertical Reference Pt	(8099'GL+25.5'KB = 8124.5'RKB) (RKB)	(8099'GL+25.5'KB = 8124.5'RKB) (RKB) to Ground Level at Slot (SLOT#05 JANET 0780 11S-4H9 (377'FNL & 839'FEL,SEC.04))	8124.50ft
MD Reference Pt	(8099'GL+25.5'KB = 8124.5'RKB) (RKB)	Section Origin	N 0.00, E 0.00 ft
Field Vertical Reference	Mean Sea Level	Section Azimuth	165.91°



Planned Wellpath Report

JANET 0780 11S-4H9 (REV-B.0) PWP

Page 2 of 9



REFERENCE WELLPATH IDENTIFICATION

Operator	FULCRUM ENERGY OPERATING	Well	JANET 0780 11S-4H9
Field	JACKSON COUNTY (NAD83/TN)	API	05-057-06642
Facility	SEC.04-T07N-R80W	Wellbore	JANET 0780 11S-4H9 PWB
Slot	SLOT#05 JANET 0780 11S-4H9 (377'FNL & 839'FEL,SEC.04)		

WELLPATH DATA (223 stations) † = interpolated, ‡ = extrapolated station

MD [ft]	Inclination [°]	Azimuth [°]	TVD [ft]	Vert Sect [ft]	North [ft]	East [ft]	Grid East [US ft]	Grid North [US ft]	Latitude	Longitude	DLS [°/100ft]	Comments
0.00†	0.000	67.807	0.00	0.00	0.00	0.00	2752817.41	1467805.74	40.6141177	-106.3903437	0.00	
25.50	0.000	67.807	25.50	0.00	0.00	0.00	2752817.41	1467805.74	40.6141177	-106.3903437	0.00	Tie On
100.00†	0.000	67.807	100.00	0.00	0.00	0.00	2752817.41	1467805.74	40.6141177	-106.3903437	0.00	
200.00†	0.000	67.807	200.00	0.00	0.00	0.00	2752817.41	1467805.74	40.6141177	-106.3903437	0.00	
300.00†	0.000	67.807	300.00	0.00	0.00	0.00	2752817.41	1467805.74	40.6141177	-106.3903437	0.00	
400.00	0.000	67.807	400.00	0.00	0.00	0.00	2752817.41	1467805.74	40.6141177	-106.3903437	0.00	End of Tangent
500.00†	2.000	67.807	499.98	-0.25	0.66	1.62	2752819.03	1467806.38	40.6141195	-106.3903379	2.00	
600.00†	4.000	67.807	599.84	-0.98	2.64	6.46	2752823.90	1467808.31	40.6141249	-106.3903205	2.00	
700.00†	6.000	67.807	699.45	-2.21	5.93	14.53	2752832.00	1467811.52	40.6141340	-106.3902914	2.00	
800.00†	8.000	67.807	798.70	-3.93	10.53	25.81	2752843.33	1467816.01	40.6141466	-106.3902508	2.00	
900.00†	10.000	67.807	897.47	-6.13	16.44	40.30	2752857.87	1467821.77	40.6141628	-106.3901986	2.00	
1000.00†	12.000	67.807	995.62	-8.82	23.65	57.96	2752875.61	1467828.80	40.6141826	-106.3901350	2.00	
1100.00†	14.000	67.807	1093.06	-11.99	32.14	78.79	2752896.52	1467837.09	40.6142059	-106.3900599	2.00	
1200.00†	16.000	67.807	1189.64	-15.64	41.92	102.76	2752920.58	1467846.63	40.6142327	-106.3899736	2.00	
1300.00†	18.000	67.807	1285.27	-19.76	52.96	129.82	2752947.76	1467857.40	40.6142631	-106.3898761	2.00	
1400.00†	20.000	67.807	1379.82	-24.34	65.26	159.97	2752978.02	1467869.39	40.6142968	-106.3897676	2.00	
1473.06	21.461	67.807	1448.14	-27.99	75.03	183.91	2753002.06	1467878.92	40.6143236	-106.3896813	2.00	Build (XS)
1500.00†	21.461	67.807	1473.22	-29.38	78.75	193.04	2753011.23	1467882.55	40.6143338	-106.3896484	0.00	
1600.00†	21.461	67.807	1566.28	-34.53	92.57	226.92	2753045.24	1467896.03	40.6143718	-106.3895264	0.00	
1700.00†	21.461	67.807	1659.35	-39.69	106.39	260.79	2753079.25	1467909.51	40.6144097	-106.3894044	0.00	
1800.00†	21.461	67.807	1752.42	-44.84	120.21	294.67	2753113.26	1467922.99	40.6144476	-106.3892824	0.00	
1900.00†	21.461	67.807	1845.48	-50.00	134.03	328.55	2753147.28	1467936.46	40.6144856	-106.3891604	0.00	
2000.00†	21.461	67.807	1938.55	-55.15	147.85	362.42	2753181.29	1467949.94	40.6145235	-106.3890383	0.00	
2100.00†	21.461	67.807	2031.61	-60.31	161.67	396.30	2753215.30	1467963.42	40.6145614	-106.3889163	0.00	
2200.00†	21.461	67.807	2124.68	-65.46	175.49	430.17	2753249.31	1467976.90	40.6145994	-106.3887943	0.00	
2300.00†	21.461	67.807	2217.75	-70.62	189.31	464.05	2753283.33	1467990.38	40.6146373	-106.3886723	0.00	
2400.00†	21.461	67.807	2310.81	-75.77	203.13	497.93	2753317.34	1468003.86	40.6146752	-106.3885503	0.00	
2500.00†	21.461	67.807	2403.88	-80.93	216.95	531.80	2753351.35	1468017.34	40.6147132	-106.3884283	0.00	
2600.00†	21.461	67.807	2496.95	-86.08	230.77	565.68	2753385.37	1468030.82	40.6147511	-106.3883062	0.00	
2700.00†	21.461	67.807	2590.01	-91.24	244.59	599.56	2753419.38	1468044.30	40.6147890	-106.3881842	0.00	
2800.00†	21.461	67.807	2683.08	-96.39	258.41	633.43	2753453.39	1468057.78	40.6148270	-106.3880622	0.00	
2900.00†	21.461	67.807	2776.15	-101.55	272.24	667.31	2753487.40	1468071.25	40.6148649	-106.3879402	0.00	
3000.00†	21.461	67.807	2869.21	-106.70	286.06	701.19	2753521.42	1468084.73	40.6149028	-106.3878182	0.00	
3100.00†	21.461	67.807	2962.28	-111.86	299.88	735.06	2753555.43	1468098.21	40.6149408	-106.3876961	0.00	
3200.00†	21.461	67.807	3055.35	-117.01	313.70	768.94	2753589.44	1468111.69	40.6149787	-106.3875741	0.00	
3300.00†	21.461	67.807	3148.41	-122.17	327.52	802.82	2753623.45	1468125.17	40.6150166	-106.3874521	0.00	
3400.00†	21.461	67.807	3241.48	-127.32	341.34	836.69	2753657.47	1468138.65	40.6150545	-106.3873301	0.00	
3500.00†	21.461	67.807	3334.55	-132.48	355.16	870.57	2753691.48	1468152.13	40.6150925	-106.3872081	0.00	
3600.00†	21.461	67.807	3427.61	-137.63	368.98	904.45	2753725.49	1468165.61	40.6151304	-106.3870860	0.00	
3700.00†	21.461	67.807	3520.68	-142.79	382.80	938.32	2753759.51	1468179.09	40.6151683	-106.3869640	0.00	
3800.00†	21.461	67.807	3613.75	-147.94	396.62	972.20	2753793.52	1468192.57	40.6152063	-106.3868420	0.00	
3900.00†	21.461	67.807	3706.81	-153.10	410.44	1006.08	2753827.53	1468206.05	40.6152442	-106.3867200	0.00	
4000.00†	21.461	67.807	3799.88	-158.25	424.26	1039.95	2753861.54	1468219.52	40.6152821	-106.3865980	0.00	
4100.00†	21.461	67.807	3892.95	-163.41	438.08	1073.83	2753895.56	1468233.00	40.6153201	-106.3864759	0.00	
4200.00†	21.461	67.807	3986.01	-168.56	451.90	1107.71	2753929.57	1468246.48	40.6153580	-106.3863539	0.00	



Planned Wellpath Report

JANET 0780 11S-4H9 (REV-B.0) PWP

Page 3 of 9



REFERENCE WELLPATH IDENTIFICATION			
Operator	FULCRUM ENERGY OPERATING	Well	JANET 0780 11S-4H9
Field	JACKSON COUNTY (NAD83/TN)	API	05-057-06642
Facility	SEC.04-T07N-R80W	Wellbore	JANET 0780 11S-4H9 PWB
Slot	SLOT#05 JANET 0780 11S-4H9 (377'FNL & 839'FEL,SEC.04)		

WELLPATH DATA (223 stations) † = interpolated, ‡ = extrapolated station

MD [ft]	Inclination [°]	Azimuth [°]	TVD [ft]	Vert Sect [ft]	North [ft]	East [ft]	Grid East [US ft]	Grid North [US ft]	Latitude	Longitude	DLS ["/100ft]	Comments
4300.00†	21.461	67.807	4079.08	-173.72	465.72	1141.58	2753963.58	1468259.96	40.6153959	-106.3862319	0.00	
4400.00†	21.461	67.807	4172.15	-178.87	479.54	1175.46	2753997.59	1468273.44	40.6154338	-106.3861099	0.00	
4500.00†	21.461	67.807	4265.21	-184.03	493.36	1209.34	2754031.61	1468286.92	40.6154718	-106.3859878	0.00	
4600.00†	21.461	67.807	4358.28	-189.18	507.18	1243.21	2754065.62	1468300.40	40.6155097	-106.3858658	0.00	
4700.00†	21.461	67.807	4451.35	-194.34	521.00	1277.09	2754099.63	1468313.88	40.6155476	-106.3857438	0.00	
4800.00†	21.461	67.807	4544.41	-199.49	534.82	1310.96	2754133.65	1468327.36	40.6155856	-106.3856218	0.00	
4900.00†	21.461	67.807	4637.48	-204.65	548.64	1344.84	2754167.66	1468340.84	40.6156235	-106.3854998	0.00	
5000.00†	21.461	67.807	4730.54	-209.80	562.46	1378.72	2754201.67	1468354.31	40.6156614	-106.3853777	0.00	
5100.00†	21.461	67.807	4823.61	-214.96	576.28	1412.59	2754235.68	1468367.79	40.6156993	-106.3852557	0.00	
5200.00†	21.461	67.807	4916.68	-220.11	590.10	1446.47	2754269.70	1468381.27	40.6157373	-106.3851337	0.00	
5300.00†	21.461	67.807	5009.74	-225.27	603.92	1480.35	2754303.71	1468394.75	40.6157752	-106.3850117	0.00	
5400.00†	21.461	67.807	5102.81	-230.42	617.74	1514.22	2754337.72	1468408.23	40.6158131	-106.3848896	0.00	
5500.00†	21.461	67.807	5195.88	-235.58	631.56	1548.10	2754371.73	1468421.71	40.6158511	-106.3847676	0.00	
5600.00†	21.461	67.807	5288.94	-240.73	645.38	1581.98	2754405.75	1468435.19	40.6158890	-106.3846456	0.00	
5700.00†	21.461	67.807	5382.01	-245.89	659.20	1615.85	2754439.76	1468448.67	40.6159269	-106.3845236	0.00	
5800.00†	21.461	67.807	5475.08	-251.04	673.02	1649.73	2754473.77	1468462.15	40.6159648	-106.3844015	0.00	
5900.00†	21.461	67.807	5568.14	-256.20	686.84	1683.61	2754507.79	1468475.63	40.6160028	-106.3842795	0.00	
6000.00†	21.461	67.807	5661.21	-261.35	700.66	1717.48	2754541.80	1468489.11	40.6160407	-106.3841575	0.00	
6100.00†	21.461	67.807	5754.28	-266.51	714.48	1751.36	2754575.81	1468502.58	40.6160786	-106.3840355	0.00	
6200.00†	21.461	67.807	5847.34	-271.66	728.30	1785.24	2754609.82	1468516.06	40.6161165	-106.3839135	0.00	
6300.00†	21.461	67.807	5940.41	-276.82	742.12	1819.11	2754643.84	1468529.54	40.6161545	-106.3837914	0.00	
6400.00†	21.461	67.807	6033.48	-281.97	755.94	1852.99	2754677.85	1468543.02	40.6161924	-106.3836694	0.00	
6500.00†	21.461	67.807	6126.54	-287.13	769.76	1886.87	2754711.86	1468556.50	40.6162303	-106.3835474	0.00	
6600.00†	21.461	67.807	6219.61	-292.28	783.58	1920.74	2754745.87	1468569.98	40.6162683	-106.3834254	0.00	
6700.00†	21.461	67.807	6312.68	-297.44	797.40	1954.62	2754779.89	1468583.46	40.6163062	-106.3833033	0.00	
6800.00†	21.461	67.807	6405.74	-302.59	811.22	1988.50	2754813.90	1468596.94	40.6163441	-106.3831813	0.00	
6900.00†	21.461	67.807	6498.81	-307.75	825.04	2022.37	2754847.91	1468610.42	40.6163820	-106.3830593	0.00	
7000.00†	21.461	67.807	6591.88	-312.90	838.86	2056.25	2754881.93	1468623.90	40.6164200	-106.3829373	0.00	
7100.00†	21.461	67.807	6684.94	-318.06	852.68	2090.12	2754915.94	1468637.37	40.6164579	-106.3828152	0.00	
7200.00†	21.461	67.807	6778.01	-323.21	866.50	2124.00	2754949.95	1468650.85	40.6164958	-106.3826932	0.00	
7300.00†	21.461	67.807	6871.08	-328.37	880.32	2157.88	2754983.96	1468664.33	40.6165337	-106.3825712	0.00	
7400.00†	21.461	67.807	6964.14	-333.52	894.14	2191.75	2755017.98	1468677.81	40.6165717	-106.3824491	0.00	
7500.00†	21.461	67.807	7057.21	-338.68	907.97	2225.63	2755051.99	1468691.29	40.6166096	-106.3823271	0.00	
7600.00†	21.461	67.807	7150.28	-343.83	921.79	2259.51	2755086.00	1468704.77	40.6166475	-106.3822051	0.00	
7700.00†	21.461	67.807	7243.34	-348.99	935.61	2293.38	2755120.01	1468718.25	40.6166854	-106.3820831	0.00	
7800.00†	21.461	67.807	7336.41	-354.14	949.43	2327.26	2755154.03	1468731.73	40.6167234	-106.3819610	0.00	
7900.00†	21.461	67.807	7429.47	-359.30	963.25	2361.14	2755188.04	1468745.21	40.6167613	-106.3818390	0.00	
8000.00†	21.461	67.807	7522.54	-364.45	977.07	2395.01	2755222.05	1468758.69	40.6167992	-106.3817170	0.00	
8100.00†	21.461	67.807	7615.61	-369.61	990.89	2428.89	2755256.07	1468772.17	40.6168371	-106.3815950	0.00	
8200.00†	21.461	67.807	7708.67	-374.76	1004.71	2462.77	2755290.08	1468785.64	40.6168751	-106.3814729	0.00	
8296.83	21.461	67.807	7798.80	-379.76	1018.09	2495.57	2755323.01	1468798.70	40.6169118	-106.3813548	0.00	KOP
8300.00†	21.367	68.450	7801.74	-379.91	1018.52	2496.64	2755324.09	1468799.12	40.6169130	-106.3813509	8.00	
8400.00†	19.803	90.906	7895.50	-377.89	1024.95	2530.58	2755358.09	1468805.21	40.6169306	-106.3812287	8.00	
8500.00†	21.227	113.510	7989.30	-362.43	1017.45	2564.17	2755391.60	1468797.37	40.6169100	-106.3811077	8.00	
8600.00†	25.137	131.361	8081.33	-333.84	996.16	2596.77	2755423.98	1468775.75	40.6168516	-106.3809903	8.00	



Planned Wellpath Report

JANET 0780 11S-4H9 (REV-B.0) PWP

Page 4 of 9



REFERENCE WELLPATH IDENTIFICATION

Operator	FULCRUM ENERGY OPERATING	Well	JANET 0780 11S-4H9
Field	JACKSON COUNTY (NAD83/TN)	API	05-057-06642
Facility	SEC.04-T07N-R80W	Wellbore	JANET 0780 11S-4H9 PWB
Slot	SLOT#05 JANET 0780 11S-4H9 (377'FNL & 839'FEL,SEC.04)		

WELLPATH DATA (223 stations) † = interpolated, ‡ = extrapolated station

MD [ft]	Inclination [°]	Azimuth [°]	TVD [ft]	Vert Sect [ft]	North [ft]	East [ft]	Grid East [US ft]	Grid North [US ft]	Latitude	Longitude	DLS [°/100ft]	Comments
8700.00†	30.592	143.958	8169.78	-292.68	961.49	2627.73	2755454.59	1468740.78	40.6167564	-106.3808788	8.00	
8800.00†	36.910	152.832	8252.93	-239.74	914.13	2656.46	2755482.85	1468693.13	40.6166264	-106.3807753	8.00	
8900.00†	43.715	159.355	8329.17	-176.06	854.98	2682.39	2755508.19	1468633.72	40.6164640	-106.3806819	8.00	
9000.00†	50.808	164.405	8397.02	-102.88	785.21	2705.03	2755530.12	1468563.73	40.6162725	-106.3806004	8.00	
9100.00†	58.078	168.515	8455.15	-21.61	706.17	2723.93	2755548.22	1468484.50	40.6160556	-106.3805324	8.00	
9200.00†	65.462	172.016	8502.43	66.15	619.39	2738.72	2755562.14	1468397.59	40.6158174	-106.3804791	8.00	
9300.00†	72.917	175.124	8537.94	158.70	526.58	2749.12	2755571.61	1468304.68	40.6155626	-106.3804417	8.00	
9400.00†	80.415	177.991	8560.99	254.24	429.53	2754.92	2755576.43	1468207.57	40.6152962	-106.3804209	8.00	
9496.57	87.678	180.641	8571.00 ¹	347.60	333.56	2756.05	2755576.60	1468111.60	40.6150328	-106.3804168	8.00	LP
9500.00†	87.678	180.641	8571.14	350.91	330.13	2756.01	2755576.53	1468108.17	40.6150234	-106.3804170	0.00	
9600.00†	87.678	180.641	8575.19	447.55	230.22	2754.89	2755574.41	1468008.28	40.6147492	-106.3804210	0.00	
9700.00†	87.678	180.641	8579.24	544.18	130.31	2753.78	2755572.29	1467908.39	40.6144749	-106.3804251	0.00	
9800.00†	87.678	180.641	8583.29	640.81	30.40	2752.66	2755570.17	1467808.50	40.6142007	-106.3804291	0.00	
9900.00†	87.678	180.641	8587.34	737.44	-69.52	2751.54	2755568.05	1467708.60	40.6139265	-106.3804332	0.00	
10000.00†	87.678	180.641	8591.39	834.08	-169.43	2750.43	2755565.93	1467608.71	40.6136522	-106.3804373	0.00	
10100.00†	87.678	180.641	8595.45	930.71	-269.34	2749.31	2755563.81	1467508.82	40.6133780	-106.3804413	0.00	
10200.00†	87.678	180.641	8599.50	1027.34	-369.25	2748.19	2755561.69	1467408.92	40.6131037	-106.3804454	0.00	
10300.00†	87.678	180.641	8603.55	1123.97	-469.16	2747.07	2755559.57	1467309.03	40.6128295	-106.3804495	0.00	
10400.00†	87.678	180.641	8607.60	1220.60	-569.07	2745.96	2755557.45	1467209.14	40.6125553	-106.3804535	0.00	
10500.00†	87.678	180.641	8611.65	1317.24	-668.99	2744.84	2755555.33	1467109.25	40.6122810	-106.3804576	0.00	
10501.25	87.678	180.641	8611.70 ²	1318.44	-670.23	2744.83	2755555.30	1467108.00	40.6122776	-106.3804576	0.00	WP1
10600.00†	89.653	180.684	8614.00	1413.91	-768.95	2743.69	2755553.17	1467009.30	40.6120067	-106.3804618	2.00	
10660.93	90.871	180.711	8613.72	1472.82	-829.87	2742.94	2755551.82	1466948.39	40.6118394	-106.3804645	2.00	End of 3D Arc (J)
10700.00†	90.871	180.711	8613.13	1510.59	-868.93	2742.46	2755550.94	1466909.34	40.6117322	-106.3804662	0.00	
10800.00†	90.871	180.711	8611.61	1607.25	-968.91	2741.22	2755548.69	1466809.38	40.6114578	-106.3804708	0.00	
10900.00†	90.871	180.711	8610.09	1703.92	-1068.89	2739.98	2755546.45	1466709.42	40.6111834	-106.3804753	0.00	
11000.00†	90.871	180.711	8608.57	1800.59	-1168.88	2738.74	2755544.21	1466609.46	40.6109089	-106.3804798	0.00	
11100.00†	90.871	180.711	8607.05	1897.26	-1268.86	2737.50	2755541.96	1466509.50	40.6106345	-106.3804843	0.00	
11200.00†	90.871	180.711	8605.53	1993.93	-1368.84	2736.26	2755539.72	1466409.53	40.6103601	-106.3804888	0.00	
11300.00†	90.871	180.711	8604.00	2090.60	-1468.82	2735.02	2755537.48	1466309.57	40.6100857	-106.3804933	0.00	
11400.00†	90.871	180.711	8602.48	2187.27	-1568.80	2733.78	2755535.23	1466209.61	40.6098112	-106.3804978	0.00	
11500.00†	90.871	180.711	8600.96	2283.94	-1668.78	2732.54	2755532.99	1466109.65	40.6095368	-106.3805023	0.00	
11517.36	90.871	180.711	8600.70 ³	2300.72	-1686.13	2732.33	2755532.60	1466092.30	40.6094892	-106.3805031	0.00	WP2
11536.06	91.245	180.704	8600.35	2318.80	-1704.84	2732.09	2755532.18	1466073.60	40.6094378	-106.3805039	2.00	End of 3D Arc (J)
11600.00†	91.245	180.704	8598.97	2380.60	-1768.75	2731.31	2755530.75	1466009.70	40.6092624	-106.3805068	0.00	
11700.00†	91.245	180.704	8596.79	2477.26	-1868.72	2730.08	2755528.52	1465909.75	40.6089880	-106.3805112	0.00	
11800.00†	91.245	180.704	8594.62	2573.92	-1968.69	2728.85	2755526.29	1465809.80	40.6087136	-106.3805157	0.00	
11900.00†	91.245	180.704	8592.45	2670.58	-2068.66	2727.62	2755524.06	1465709.85	40.6084392	-106.3805202	0.00	
12000.00†	91.245	180.704	8590.27	2767.25	-2168.63	2726.40	2755521.83	1465609.90	40.6081648	-106.3805246	0.00	
12100.00†	91.245	180.704	8588.10	2863.91	-2268.60	2725.17	2755519.60	1465509.95	40.6078904	-106.3805291	0.00	
12200.00†	91.245	180.704	8585.93	2960.57	-2368.56	2723.94	2755517.36	1465410.01	40.6076160	-106.3805335	0.00	
12300.00†	91.245	180.704	8583.75	3057.23	-2468.53	2722.71	2755515.13	1465310.06	40.6073416	-106.3805380	0.00	
12400.00†	91.245	180.704	8581.58	3153.89	-2568.50	2721.48	2755512.90	1465210.11	40.6070672	-106.3805425	0.00	
12500.00†	91.245	180.704	8579.41	3250.55	-2668.47	2720.26	2755510.67	1465110.16	40.6067929	-106.3805469	0.00	
12600.00†	91.245	180.704	8577.23	3347.21	-2768.44	2719.03	2755508.44	1465010.21	40.6065185	-106.3805514	0.00	



Planned Wellpath Report

JANET 0780 11S-4H9 (REV-B.0) PWP

Page 5 of 9



REFERENCE WELLPATH IDENTIFICATION

Operator	FULCRUM ENERGY OPERATING	Well	JANET 0780 11S-4H9
Field	JACKSON COUNTY (NAD83/TN)	API	05-057-06642
Facility	SEC.04-T07N-R80W	Wellbore	JANET 0780 11S-4H9 PWB
Slot	SLOT#05 JANET 0780 11S-4H9 (377'FNL & 839'FEL,SEC.04)		

WELLPATH DATA (223 stations) † = interpolated, ‡ = extrapolated station

MD [ft]	Inclination [°]	Azimuth [°]	TVD [ft]	Vert Sect [ft]	North [ft]	East [ft]	Grid East [US ft]	Grid North [US ft]	Latitude	Longitude	DLS [°/100ft]	Comments
12700.00†	91.245	180.704	8575.06	3443.87	-2868.41	2717.80	2755506.21	1464910.26	40.6062441	-106.3805559	0.00	
12800.00†	91.245	180.704	8572.89	3540.53	-2968.38	2716.57	2755503.97	1464810.31	40.6059697	-106.3805603	0.00	
12900.00†	91.245	180.704	8570.71	3637.19	-3068.35	2715.34	2755501.74	1464710.36	40.6056953	-106.3805648	0.00	
13000.00†	91.245	180.704	8568.54	3733.85	-3168.31	2714.12	2755499.51	1464610.41	40.6054209	-106.3805692	0.00	
13100.00†	91.245	180.704	8566.37	3830.51	-3268.28	2712.89	2755497.28	1464510.47	40.6051465	-106.3805737	0.00	
13200.00†	91.245	180.704	8564.20	3927.17	-3368.25	2711.66	2755495.05	1464410.52	40.6048721	-106.3805782	0.00	
13300.00†	91.245	180.704	8562.02	4023.83	-3468.22	2710.43	2755492.82	1464310.57	40.6045977	-106.3805826	0.00	
13400.00†	91.245	180.704	8559.85	4120.49	-3568.19	2709.20	2755490.58	1464210.62	40.6043233	-106.3805871	0.00	
13500.00†	91.245	180.704	8557.68	4217.16	-3668.16	2707.98	2755488.35	1464110.67	40.6040489	-106.3805916	0.00	
13600.00†	91.245	180.704	8555.50	4313.82	-3768.13	2706.75	2755486.12	1464010.72	40.6037745	-106.3805960	0.00	
13700.00†	91.245	180.704	8553.33	4410.48	-3868.10	2705.52	2755483.89	1463910.77	40.6035001	-106.3806005	0.00	
13800.00†	91.245	180.704	8551.16	4507.14	-3968.07	2704.29	2755481.66	1463810.82	40.6032257	-106.3806049	0.00	
13900.00†	91.245	180.704	8548.98	4603.80	-4068.03	2703.06	2755479.43	1463710.87	40.6029513	-106.3806094	0.00	
14000.00†	91.245	180.704	8546.81	4700.46	-4168.00	2701.84	2755477.19	1463610.92	40.6026769	-106.3806139	0.00	
14100.00†	91.245	180.704	8544.64	4797.12	-4267.97	2700.61	2755474.96	1463510.98	40.6024025	-106.3806183	0.00	
14200.00†	91.245	180.704	8542.46	4893.78	-4367.94	2699.38	2755472.73	1463411.03	40.6021281	-106.3806228	0.00	
14300.00†	91.245	180.704	8540.29	4990.44	-4467.91	2698.15	2755470.50	1463311.08	40.6018538	-106.3806273	0.00	
14313.38	91.245	180.704	8540.00 [†]	5003.38	-4481.29	2697.99	2755470.20	1463297.70	40.6018170	-106.3806278	0.00	WP3
14400.00†	92.978	180.704	8536.81	5087.06	-4567.84	2696.92	2755468.27	1463211.17	40.6015795	-106.3806317	2.00	
14500.00†	94.978	180.705	8529.87	5183.51	-4667.58	2695.70	2755466.04	1463111.44	40.6013057	-106.3806362	2.00	
14600.00†	96.978	180.705	8519.46	5279.66	-4767.03	2694.47	2755463.82	1463012.02	40.6010327	-106.3806406	2.00	
14700.00†	98.978	180.706	8505.58	5375.40	-4866.05	2693.25	2755461.60	1462913.02	40.6007609	-106.3806450	2.00	
14800.00†	100.978	180.706	8488.26	5470.62	-4964.52	2692.04	2755459.40	1462814.56	40.6004906	-106.3806495	2.00	
14900.00†	102.978	180.707	8467.50	5565.19	-5062.33	2690.83	2755457.21	1462716.77	40.6002222	-106.3806538	2.00	
14942.35	103.825	180.707	8457.69	5605.02	-5103.53	2690.33	2755456.29	1462675.59	40.6001091	-106.3806557	2.00	End of 3D Arc (J)
15000.00†	103.825	180.707	8443.91	5659.14	-5159.50	2689.63	2755455.04	1462619.62	40.5999555	-106.3806582	0.00	
15100.00†	103.825	180.707	8420.02	5753.02	-5256.60	2688.44	2755452.87	1462522.55	40.5996890	-106.3806625	0.00	
15200.00†	103.825	180.707	8396.12	5846.90	-5353.69	2687.24	2755450.69	1462425.47	40.5994224	-106.3806669	0.00	
15300.00†	103.825	180.707	8372.23	5940.79	-5450.79	2686.04	2755448.52	1462328.39	40.5991559	-106.3806713	0.00	
15400.00†	103.825	180.707	8348.33	6034.67	-5547.88	2684.84	2755446.35	1462231.32	40.5988894	-106.3806756	0.00	
15500.00†	103.825	180.707	8324.44	6128.55	-5644.98	2683.64	2755444.17	1462134.24	40.5986229	-106.3806800	0.00	
15600.00†	103.825	180.707	8300.54	6222.43	-5742.08	2682.45	2755442.00	1462037.16	40.5983564	-106.3806843	0.00	
15700.00†	103.825	180.707	8276.65	6316.31	-5839.17	2681.25	2755439.83	1461940.09	40.5980899	-106.3806887	0.00	
15800.00†	103.825	180.707	8252.76	6410.19	-5936.27	2680.05	2755437.66	1461843.01	40.5978234	-106.3806930	0.00	
15900.00†	103.825	180.707	8228.86	6504.07	-6033.36	2678.85	2755435.48	1461745.94	40.5975569	-106.3806974	0.00	
16000.00†	103.825	180.707	8204.97	6597.95	-6130.46	2677.65	2755433.31	1461648.86	40.5972904	-106.3807017	0.00	
16100.00†	103.825	180.707	8181.07	6691.84	-6227.56	2676.45	2755431.14	1461551.78	40.5970239	-106.3807061	0.00	
16200.00†	103.825	180.707	8157.18	6785.72	-6324.65	2675.26	2755428.96	1461454.71	40.5967574	-106.3807104	0.00	
16300.00†	103.825	180.707	8133.28	6879.60	-6421.75	2674.06	2755426.79	1461357.63	40.5964908	-106.3807148	0.00	
16400.00†	103.825	180.707	8109.39	6973.48	-6518.84	2672.86	2755424.62	1461260.55	40.5962243	-106.3807191	0.00	
16500.00†	103.825	180.707	8085.49	7067.36	-6615.94	2671.66	2755422.44	1461163.48	40.5959578	-106.3807235	0.00	
16534.28	103.825	180.707	8077.30 [‡]	7099.54	-6649.22	2671.25	2755421.70	1461130.20	40.5958665	-106.3807250	0.00	WP4
16600.00†	102.510	180.705	8062.33	7161.41	-6713.21	2670.46	2755420.27	1461066.23	40.5956908	-106.3807278	2.00	
16650.02	101.510	180.704	8051.92	7208.71	-6762.13	2669.86	2755419.18	1461017.32	40.5955566	-106.3807300	2.00	End of 3D Arc (XS)
16700.00†	101.510	180.704	8041.95	7256.06	-6811.10	2669.26	2755418.08	1460968.35	40.5954221	-106.3807322	0.00	



Planned Wellpath Report

JANET 0780 11S-4H9 (REV-B.0) PWP

Page 6 of 9



REFERENCE WELLPATH IDENTIFICATION

Operator	FULCRUM ENERGY OPERATING	Well	JANET 0780 11S-4H9
Field	JACKSON COUNTY (NAD83/TN)	API	05-057-06642
Facility	SEC.04-T07N-R80W	Wellbore	JANET 0780 11S-4H9 PWB
Slot	SLOT#05 JANET 0780 11S-4H9 (377'FNL & 839'FEL,SEC.04)		

WELLPATH DATA (223 stations) † = interpolated, ‡ = extrapolated station

MD [ft]	Inclination [°]	Azimuth [°]	TVD [ft]	Vert Sect [ft]	North [ft]	East [ft]	Grid East [US ft]	Grid North [US ft]	Latitude	Longitude	DLS [°/100ft]	Comments
16800.00†	101.510	180.704	8022.00	7350.80	-6909.08	2668.05	2755415.89	1460870.39	40.5951532	-106.3807366	0.00	
16900.00†	101.510	180.704	8002.04	7445.54	-7007.06	2666.85	2755413.71	1460772.43	40.5948843	-106.3807410	0.00	
17000.00†	101.510	180.704	7982.09	7540.28	-7105.05	2665.65	2755411.52	1460674.47	40.5946153	-106.3807453	0.00	
17100.00†	101.510	180.704	7962.13	7635.02	-7203.03	2664.44	2755409.33	1460576.50	40.5943464	-106.3807497	0.00	
17200.00†	101.510	180.704	7942.18	7729.76	-7301.01	2663.24	2755407.14	1460478.54	40.5940774	-106.3807541	0.00	
17300.00†	101.510	180.704	7922.23	7824.50	-7398.99	2662.03	2755404.96	1460380.58	40.5938085	-106.3807585	0.00	
17400.00†	101.510	180.704	7902.27	7919.24	-7496.97	2660.83	2755402.77	1460282.62	40.5935396	-106.3807628	0.00	
17500.00†	101.510	180.704	7882.32	8013.98	-7594.95	2659.62	2755400.58	1460184.66	40.5932706	-106.3807672	0.00	
17600.00†	101.510	180.704	7862.37	8108.72	-7692.94	2658.42	2755398.39	1460086.69	40.5930017	-106.3807716	0.00	
17700.00†	101.510	180.704	7842.41	8203.46	-7790.92	2657.22	2755396.20	1459988.73	40.5927327	-106.3807760	0.00	
17800.00†	101.510	180.704	7822.46	8298.19	-7888.90	2656.01	2755394.02	1459890.77	40.5924638	-106.3807803	0.00	
17900.00†	101.510	180.704	7802.51	8392.93	-7986.88	2654.81	2755391.83	1459792.81	40.5921949	-106.3807847	0.00	
18000.00†	101.510	180.704	7782.55	8487.67	-8084.86	2653.60	2755389.64	1459694.84	40.5919259	-106.3807891	0.00	
18100.00†	101.510	180.704	7762.60	8582.41	-8182.85	2652.40	2755387.45	1459596.88	40.5916570	-106.3807934	0.00	
18102.49	101.510	180.704	7762.10	8584.77	-8185.28	2652.37	2755387.40	1459594.44	40.5916503	-106.3807936	0.00	End of Tangent (XS)
18200.00†	99.559	180.704	7744.28	8677.45	-8281.14	2651.19	2755385.26	1459498.61	40.5913872	-106.3807978	2.00	
18300.00†	97.559	180.703	7729.39	8773.06	-8380.01	2649.98	2755383.05	1459399.75	40.5911158	-106.3808022	2.00	
18400.00†	95.559	180.703	7717.97	8869.10	-8479.35	2648.76	2755380.84	1459300.44	40.5908431	-106.3808067	2.00	
18500.00†	93.559	180.702	7710.02	8965.48	-8579.02	2647.54	2755378.61	1459200.79	40.5905696	-106.3808111	2.00	
18594.92	91.661	180.702	7705.70 ⁶	9057.15	-8673.82	2646.38	2755376.50	1459106.00	40.5903093	-106.3808153	2.00	WP5
18600.00†	91.661	180.702	7705.55	9062.06	-8678.90	2646.31	2755376.39	1459100.92	40.5902954	-106.3808156	0.00	
18700.00†	91.661	180.702	7702.65	9158.70	-8778.85	2645.09	2755374.16	1459000.99	40.5900210	-106.3808200	0.00	
18800.00†	91.661	180.702	7699.76	9255.35	-8878.81	2643.87	2755371.93	1458901.06	40.5897467	-106.3808244	0.00	
18900.00†	91.661	180.702	7696.86	9351.99	-8978.76	2642.64	2755369.70	1458801.13	40.5894723	-106.3808289	0.00	
19000.00†	91.661	180.702	7693.96	9448.63	-9078.71	2641.42	2755367.48	1458701.20	40.5891980	-106.3808333	0.00	
19100.00†	91.661	180.702	7691.06	9545.28	-9178.66	2640.19	2755365.25	1458601.27	40.5889237	-106.3808378	0.00	
19200.00†	91.661	180.702	7688.16	9641.92	-9278.61	2638.97	2755363.02	1458501.34	40.5886493	-106.3808422	0.00	
19295.20	91.661	180.702	7685.40 ⁷	9733.93	-9373.76	2637.80	2755360.90	1458406.20	40.5883881	-106.3808465	0.00	WP6
19300.00†	91.757	180.702	7685.26	9738.56	-9378.56	2637.74	2755360.79	1458401.41	40.5883750	-106.3808467	2.00	
19400.00†	93.757	180.704	7680.45	9835.13	-9478.43	2636.52	2755358.56	1458301.56	40.5881008	-106.3808511	2.00	
19500.00†	95.757	180.707	7672.15	9931.48	-9578.07	2635.29	2755356.34	1458201.93	40.5878273	-106.3808556	2.00	
19567.06	97.098	180.708	7664.65	9995.90	-9644.70	2634.47	2755354.85	1458135.32	40.5876444	-106.3808586	2.00	End of 3D Arc (J)
19600.00†	97.098	180.708	7660.58	10027.50	-9677.39	2634.06	2755354.11	1458102.63	40.5875547	-106.3808600	0.00	
19700.00†	97.098	180.708	7648.22	10123.44	-9776.62	2632.84	2755351.89	1458003.43	40.5872824	-106.3808645	0.00	
19800.00†	97.098	180.708	7635.86	10219.39	-9875.84	2631.61	2755349.67	1457904.22	40.5870100	-106.3808690	0.00	
19834.50	97.098	180.708	7631.60 ⁸	10252.48	-9910.07	2631.19	2755348.90	1457870.00	40.5869161	-106.3808705	0.00	WP7
19882.71	98.063	180.700	7625.24	10298.69	-9957.86	2630.60	2755347.83	1457822.22	40.5867849	-106.3808726	2.00	End of 3D Arc (J)
19900.00†	98.063	180.700	7622.81	10315.24	-9974.98	2630.39	2755347.45	1457805.11	40.5867379	-106.3808734	0.00	
20000.00†	98.063	180.700	7608.79	10410.97	-10073.98	2629.18	2755345.25	1457706.12	40.5864662	-106.3808778	0.00	
20100.00†	98.063	180.700	7594.76	10506.70	-10172.98	2627.97	2755343.05	1457607.14	40.5861944	-106.3808822	0.00	
20200.00†	98.063	180.700	7580.74	10602.43	-10271.99	2626.76	2755340.84	1457508.15	40.5859227	-106.3808866	0.00	
20300.00†	98.063	180.700	7566.71	10698.16	-10370.99	2625.55	2755338.64	1457409.17	40.5856509	-106.3808910	0.00	
20383.52	98.063	180.700	7555.00 ⁹	10778.11	-10453.68	2624.54	2755336.80	1457326.50	40.5854240	-106.3808946	0.00	BHL



Planned Wellpath Report

JANET 0780 11S-4H9 (REV-B.0) PWP

Page 7 of 9



REFERENCE WELLPATH IDENTIFICATION

Operator	FULCRUM ENERGY OPERATING	Well	JANET 0780 11S-4H9
Field	JACKSON COUNTY (NAD83/TN)	API	05-057-06642
Facility	SEC.04-T07N-R80W	Wellbore	JANET 0780 11S-4H9 PWB
Slot	SLOT#05 JANET 0780 11S-4H9 (377'FNL & 839'FEL,SEC.04)		

HOLE & CASING SECTIONS - Ref Wellbore: JANET 0780 11S-4H9 PWB Ref Wellpath: JANET 0780 11S-4H9 (REV-B.0) PWP

String/Diameter	Start MD [ft]	End MD [ft]	Interval [ft]	Start TVD [ft]	End TVD [ft]	Start N/S [ft]	Start E/W [ft]	End N/S [ft]	End E/W [ft]
16in Conductor	25.50	120.00	94.50	25.50	120.00	0.00	0.00	0.00	0.00
9.625in Casing Surface	25.50	5071.19	5045.69	25.50	4796.80	0.00	0.00	572.30	1402.83
5.5in Casing Production	25.50	20383.52	20358.02	25.50	7555.00	0.00	0.00	-10453.68	2624.54

TARGETS

Name	MD [ft]	TVD [ft]	North [ft]	East [ft]	Grid East [US ft]	Grid North [US ft]	Latitude	Longitude	Shape
9) JANET 0780 11S-4H9 BHL Rev-2 (211'FSL & 1977'FWL,SEC.09)	20383.52	7555.00	-10453.68	2624.54	2755336.80	1457326.50	40.5854240	-106.3808946	point
8) JANET 0780 11S-4H9 WP7	19834.50	7631.60	-9910.07	2631.19	2755348.90	1457870.00	40.5869161	-106.3808705	point
7) JANET 0780 11S-4H9 WP6	19295.20	7685.40	-9373.76	2637.80	2755360.90	1458406.20	40.5883881	-106.3808465	point
6) JANET 0780 11S-4H9 WP5	18594.92	7705.70	-8673.82	2646.38	2755376.50	1459106.00	40.5903093	-106.3808153	point
JANET 0780 11S-4H9 BHL (100'FSL & 1970'FWL,SEC.09)	N/A	7800.00	-10565.15	2617.11	2755328.25	1457215.11	40.5851180	-106.3809214	point
5) JANET 0780 11S-4H9 WP4	16534.28	8077.30	-6649.22	2671.25	2755421.70	1461130.20	40.5958665	-106.3807250	point
4) JANET 0780 11S-4H9 WP3	14313.38	8540.00	-4481.29	2697.99	2755470.20	1463297.70	40.6018170	-106.3806278	point
JANET 0780 11S-4H9 LP (100'FNL & 1898'FWL,SEC.04)	N/A	8546.00	272.22	2750.22	2755570.16	1468050.33	40.6148645	-106.3804378	point
1) JANET 0780 11S-4H9 LP Rev-2 (40'FNL & 1904'FWL,SEC.04)	9496.57	8571.00	333.56	2756.05	2755576.60	1468111.60	40.6150328	-106.3804168	point
3) JANET 0780 11S-4H9 WP2	11517.36	8600.70	-1686.13	2732.33	2755532.60	1466092.30	40.6094892	-106.3805031	point
2) JANET 0780 11S-4H9 WP1	10501.25	8611.70	-670.23	2744.83	2755555.30	1467108.00	40.6122776	-106.3804576	point



Planned Wellpath Report

JANET 0780 11S-4H9 (REV-B.0) PWP

Page 8 of 9



REFERENCE WELLPATH IDENTIFICATION

Operator	FULCRUM ENERGY OPERATING	Well	JANET 0780 11S-4H9
Field	JACKSON COUNTY (NAD83/TN)	API	05-057-06642
Facility	SEC.04-T07N-R80W	Wellbore	JANET 0780 11S-4H9 PWB
Slot	SLOT#05 JANET 0780 11S-4H9 (377'FNL & 839'FEL,SEC.04)		

SURVEY PROGRAM - Ref Wellbore: JANET 0780 11S-4H9 PWB Ref Wellpath: JANET 0780 11S-4H9 (REV-B.0) PWP

Start MD [ft]	End MD [ft]	Positional Uncertainty Model	Log Name/Comment	Wellbore
25.50	5071.19	OWSG MWD rev2 - Standard		JANET 0780 11S-4H9 PWB
5071.19	20412.01	BH AutoTrak Curve/eXpress (2019) (HRGM, Short spacing)		JANET 0780 11S-4H9 PWB



Planned Wellpath Report

JANET 0780 11S-4H9 (REV-B.0) PWP

Page 9 of 9



REFERENCE WELLPATH IDENTIFICATION

Operator	FULCRUM ENERGY OPERATING	Well	JANET 0780 11S-4H9
Field	JACKSON COUNTY (NAD83/TN)	API	05-057-06642
Facility	SEC.04-T07N-R80W	Wellbore	JANET 0780 11S-4H9 PWB
Slot	SLOT#05 JANET 0780 11S-4H9 (377'FNL & 839'FEL,SEC.04)		

DESIGN COMMENTS

MD [ft]	Inclination [°]	Azimuth [°]	TVD [ft]	Comment
25.50	0.000	67.807	25.50	Tie On
400.00	0.000	67.807	400.00	End of Tangent
1473.06	21.461	67.807	1448.14	Build (XS)
8296.83	21.461	67.807	7798.80	KOP
9496.57	87.678	180.641	8571.00	LP
10501.25	87.678	180.641	8611.70	WP1
10660.93	90.871	180.711	8613.72	End of 3D Arc (J)
11517.36	90.871	180.711	8600.70	WP2
11536.06	91.245	180.704	8600.35	End of 3D Arc (J)
14313.38	91.245	180.704	8540.00	WP3
14942.35	103.825	180.707	8457.69	End of 3D Arc (J)
16534.28	103.825	180.707	8077.30	WP4
16650.02	101.510	180.704	8051.92	End of 3D Arc (XS)
18102.49	101.510	180.704	7762.10	End of Tangent (XS)
18594.92	91.661	180.702	7705.70	WP5
19295.20	91.661	180.702	7685.40	WP6
19567.06	97.098	180.708	7664.65	End of 3D Arc (J)
19834.50	97.098	180.708	7631.60	WP7
19882.71	98.063	180.700	7625.24	End of 3D Arc (J)
20383.52	98.063	180.700	7555.00	BHL