

FULCRUM ENERGY OPERATING



Location: COLORADO Slot: SLOT#04 JANET 0780 10S-4H9 (378°FNL & 859°FEL,SEC.04)

Field: JACKSON COUNTY (NAD83/TN) Well: JANET 0780 10S-4H9

Facility: SEC.04-T07N-R80W Wellbore: JANET 0780 10S-4H9 PWB

Plot reference wellpath is JANET 0780 10S-4H9 (REV-B.0) PWP	Grid System: NAD83 / Lambert Colorado SP, Northern Zone (501), US feet
True vertical depths are referenced to (8099GL+25.5KB = 8124.5RKB) (RKB)	North Reference: True north
Reference wellpath measured depths are referenced to (8099GL+25.5KB = 8124.5RKB) (RKB)	Scale: True distance
(8099GL+25.5KB = 8124.5RKB) (RKB) to Mean Sea Level: 8124.5 feet	Coordinates are in feet referenced to Slot
Mean Sea Level to Ground level (At Slot: SLOT#04 JANET 0780 10S-4H9 (378°FNL & 859°FEL,SEC.04)): 0 feet	Depths are in feet
Offset wellpath MDs are referenced to each path's default MD datum	Created by: maitsam01 on 2025-04-30; Database: WA_Denver

Location Information

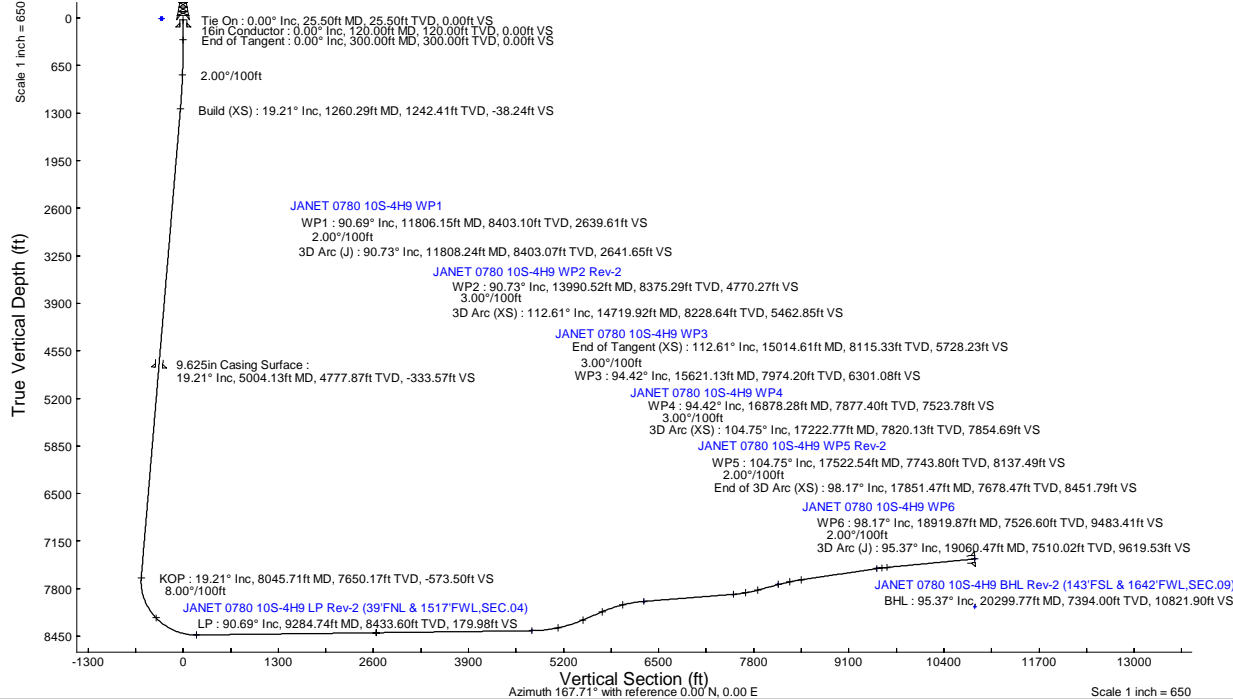
Facility Name	Grid East (US ft)	Grid North (US ft)	Latitude	Longitude		
SEC.04-T07N-R80W	2752737.421	1467805.737	40°36'50.8157"N	106°23'26.2746"W		
Slot	Local N (ft)	Local E (ft)	Grid East (US ft)	Grid North (US ft)	Latitude	Longitude
SLOT#04 JANET 0780 10S-4H9 (378°FNL & 859°FEL,SEC.04)	0.61	59.99	2752797.410	1467805.740	40°36'50.8217"N	106°23'25.4668"W
(8099GL+25.5KB = 8124.5RKB) (RKB) to Ground level (At Slot: SLOT#04 JANET 0780 10S-4H9 (378°FNL & 859°FEL,SEC.04))						8124.5ft
Mean Sea Level to Ground level (At Slot: SLOT#04 JANET 0780 10S-4H9 (378°FNL & 859°FEL,SEC.04))						0ft
(8099GL+25.5KB = 8124.5RKB) (RKB) to Mean Sea Level						8124.5ft

Well Profile Data

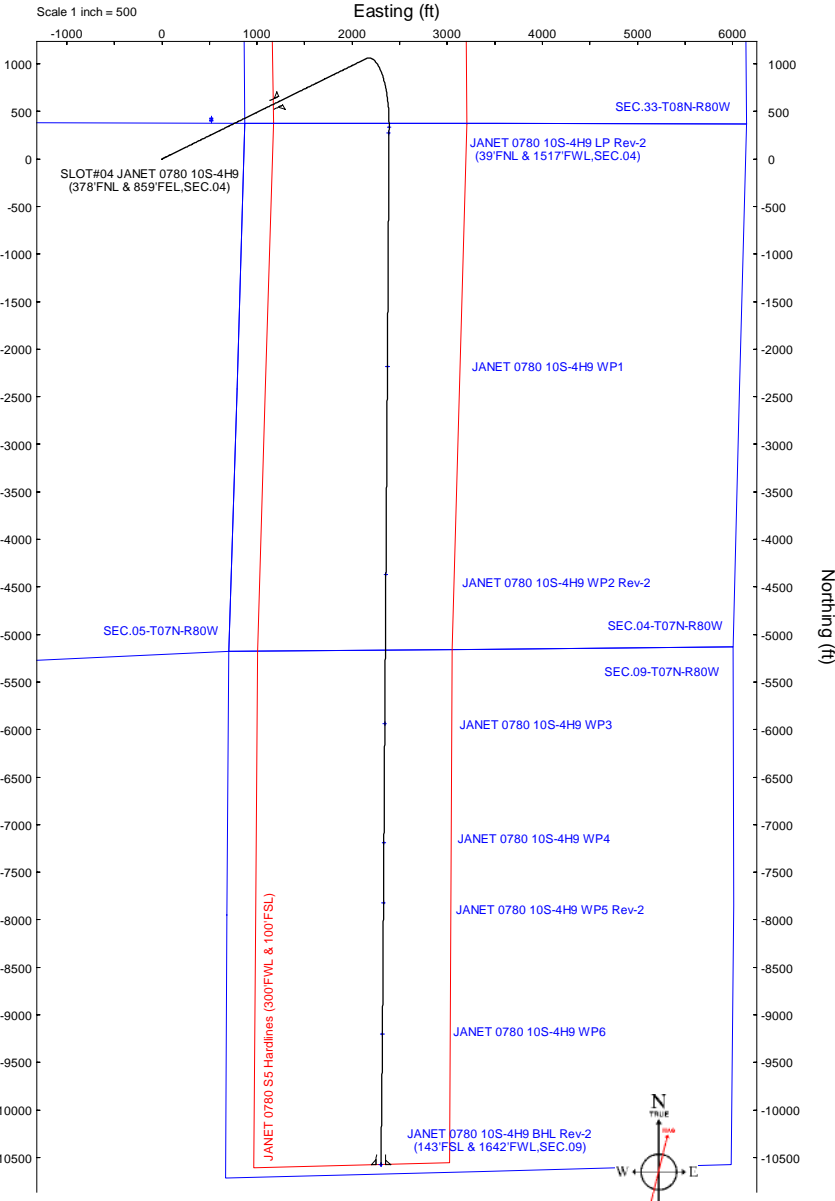
Design Comment	MD (ft)	Inc (°)	Az (°)	TVD (ft)	Local N (ft)	Local E (ft)	DLS (°/100ft)	VS (ft)
Tie On	25.50	0.000	63.838	25.50	0.00	0.00	0.00	0.00
End of Tangent	300.00	0.000	63.838	300.00	0.00	0.00	0.00	0.00
Build (XS)	1260.29	19.206	63.838	1242.41	70.30	143.11	2.00	-38.24
KOP	8045.71	19.206	63.838	7650.17	1054.47	2146.60	0.00	-573.50
LP	9284.74	90.693	180.404	8433.60	336.07	2388.80	8.00	179.98
WP1	11806.15	90.693	180.404	8403.10	-2185.10	2371.01	0.00	2639.61
3D Arc (J)	11808.24	90.729	180.425	8403.07	-2187.19	2370.99	2.00	2641.65
WP2	13990.52	90.729	180.425	8375.29	-4369.23	2354.82	0.00	4770.27
3D Arc (XS)	14719.92	112.611	180.424	8228.64	-5079.19	2349.56	3.00	5462.85
End of Tangent (XS)	15014.61	112.611	180.424	8115.33	-5351.23	2347.55	0.00	5728.23
WP3	15621.13	94.416	180.426	7974.20	-5938.46	2343.19	3.00	6301.08
WP4	16878.28	94.416	180.426	7877.40	-7191.85	2333.88	0.00	7523.78
3D Arc (XS)	17222.77	104.751	180.414	7820.13	-7531.06	2331.39	3.00	7854.69
WP5	17522.54	104.751	180.414	7743.80	-7820.94	2329.30	0.00	8137.49
End of 3D Arc (XS)	17851.47	98.172	180.427	7678.47	-8143.12	2326.93	2.00	8451.79
WP6	18919.87	98.172	180.427	7526.60	-9200.65	2319.05	0.00	9483.41
3D Arc (J)	19060.47	95.372	180.683	7510.02	-9340.25	2317.69	2.00	9619.53
BHL	20299.77	95.372	180.683	7394.00	-10574.01	2302.98	0.00	10821.90

Survey Program

Start MD (ft)	End MD (ft)	Tool	Model	Log Name/Comment	Wellbore
25.50	5004.13	OWSG MWD rev2	OWSG MWD rev2 - Standard		JANET 0780 10S-4H9 PWB
5004.13	20525.54	BH AutoTrak Curve/xpress (2019)	BH AutoTrak Curve/xpress (2019) (HRGM, Short spacing)		JANET 0780 10S-4H9 PWB



Name	Targets							
	MD (ft)	TVD (ft)	Local N (ft)	Local E (ft)	Grid East (US ft)	Grid North (US ft)	Latitude	Longitude
SEC.04-T07N-R80W	N/A	6.50	420.34	518.81	2753320.41	1468230.84	40°36'54.8751"N	106°23'18.7694"W
SEC.05-T07N-R80W	N/A	6.50	410.34	518.81	2753320.31	1468210.84	40°36'54.8763"N	106°23'18.7694"W
SEC.09-T07N-R80W	N/A	6.50	399.40	518.01	2753319.39	1468199.90	40°36'54.7682"N	106°23'18.7798"W
SEC.33-T08N-R80W	N/A	6.50	430.34	518.81	2753320.51	1468230.84	40°36'55.0740"N	106°23'18.7694"W
JANET 0780 10S-4H9 BHL Rev2 (143°FSL & 1642°FWL,SEC.09)	20299.77	7394.00	-10574.01	2302.98	2754994.04	1457209.40	40°35'6.3355"N	106°22'55.6479"W
JANET 0780 10S-4H9 WP6	18919.87	7526.60	-9200.65	2319.05	2756023.90	1458582.50	40°35'19.9062"N	106°22'55.4380"W
JANET 0780 10S-4H9 WP5 Rev-2	17522.54	7743.80	-7820.94	2329.30	2756048.00	1459962.00	40°35'33.5395"N	106°22'55.3035"W
JANET 0780 10S-4H9 WP4	16878.28	7877.40	-7191.85	2333.88	2756058.90	1460091.00	40°35'39.7558"N	106°22'55.2433"W
JANET 0780 10S-4H9 WP3	15621.13	7974.20	-5938.46	2343.19	2756080.80	1461844.20	40°35'52.1409"N	106°22'55.1210"W
JANET 0780 10S-4H9 BHL (100°FSL & 1636°FWL,SEC.09)	N/A	8046.00	-10574.01	2302.98	2754994.04	1457209.40	40°35'6.3355"N	106°22'55.6479"W
JANET 0780 10S-4H9 WP2 Rev-2	13990.52	8375.29	-4369.23	2354.82	275508.18	1463413.20	40°36'7.6470"N	106°22'54.9663"W
JANET 0780 10S-4H9 WP1	11806.15	8403.10	-2185.10	2371.01	2755146.30	1465599.00	40°36'29.2290"N	106°22'54.7575"W
JANET 0780 10S-4H9 LP Rev-2 (39°FNL & 1517°FWL,SEC.04)	9284.74	8433.60	336.07	2388.80	2755189.40	1468117.80	40°36'54.1413"N	106°22'54.5219"W
JANET 0780 10S-4H9 LP (100°FNL & 1511°FWL,SEC.04)	N/A	8785.00	273.54	2383.18	2755183.16	1468055.33	40°36'53.5295"N	106°22'54.5948"W
JANET 0780 SS Hardlines (300°FNL & 100°FSL)	N/A	9000.00	399.40	518.01	2753319.39	1468199.90	40°36'54.7682"N	106°23'18.7798"W



HQDM2024v1.0 (1900.0 to 2025.0) Dip: 66.42° Field: 15443.1 nT
 Magnetic North is 8.48 degrees East of True North (at 12/31/2024)
 To correct azimuth from Magnetic to True add 8.48 degrees



Planned Wellpath Report

JANET 0780 10S-4H9 (REV-B.0) PWP

Page 1 of 9



REFERENCE WELLPATH IDENTIFICATION

Operator	FULCRUM ENERGY OPERATING	Well	JANET 0780 10S-4H9
Field	JACKSON COUNTY (NAD83/TN)	API	05-057-06637
Facility	SEC.04-T07N-R80W	Wellbore	JANET 0780 10S-4H9 PWB
Slot	SLOT#04 JANET 0780 10S-4H9 (378'FNL & 859'FEL,SEC.04)		

REPORT SETUP INFORMATION

Projection System	NAD83 / Lambert Colorado SP, Northern Zone (501), US feet	Software System	WellArchitect@ 6.0
North Reference	True	User	Martsam01
Scale	0.999977	Report Generated	3/12/2025 at 2:28:44 PM
Convergence at slot	0.58° West	Database	WA_Denver

WELLPATH LOCATION

	Local coordinates		Grid coordinates		Geographic coordinates	
	North[ft]	East[ft]	Easting[US ft]	Northing[US ft]	Latitude	Longitude
Slot Location	0.61	59.99	2752797.41	1467805.74	40.6141171°	-106.3904158°
Facility Reference Pt			2752737.42	1467805.74	40.6141155°	-106.3906318°
Field Reference Pt			2986049.83	1344849.24	40.2800000°	-105.5500000°

WELLPATH DATUM

Calculation method	Minimum curvature	(8099'GL+25.5'KB = 8124.5'RKB) (RKB) to Facility Vertical Datum	8124.50ft
Horizontal Reference Pt	Slot	(8099'GL+25.5'KB = 8124.5'RKB) (RKB) to Mean Sea Level	8124.50ft
Vertical Reference Pt	(8099'GL+25.5'KB = 8124.5'RKB) (RKB)	(8099'GL+25.5'KB = 8124.5'RKB) (RKB) to Ground Level at Slot (SLOT#04 JANET 0780 10S-4H9 (378'FNL & 859'FEL,SEC.04))	8124.50ft
MD Reference Pt	(8099'GL+25.5'KB = 8124.5'RKB) (RKB)	Section Origin	N 0.00, E 0.00 ft
Field Vertical Reference	Mean Sea Level	Section Azimuth	167.71°



Planned Wellpath Report

JANET 0780 10S-4H9 (REV-B.0) PWP

Page 2 of 9



REFERENCE WELLPATH IDENTIFICATION

Operator	FULCRUM ENERGY OPERATING	Well	JANET 0780 10S-4H9
Field	JACKSON COUNTY (NAD83/TN)	API	05-057-06637
Facility	SEC.04-T07N-R80W	Wellbore	JANET 0780 10S-4H9 PWB
Slot	SLOT#04 JANET 0780 10S-4H9 (378'FNL & 859'FEL,SEC.04)		

WELLPATH DATA (220 stations) † = interpolated, ‡ = extrapolated station

MD [ft]	Inclination [°]	Azimuth [°]	TVD [ft]	Vert Sect [ft]	North [ft]	East [ft]	Grid East [US ft]	Grid North [US ft]	Latitude	Longitude	DLS [°/100ft]	Comments
0.00†	0.000	63.838	0.00	0.00	0.00	0.00	2752797.41	1467805.74	40.6141171	-106.3904158	0.00	
25.50	0.000	63.838	25.50	0.00	0.00	0.00	2752797.41	1467805.74	40.6141171	-106.3904158	0.00	Tie On
100.00†	0.000	63.838	100.00	0.00	0.00	0.00	2752797.41	1467805.74	40.6141171	-106.3904158	0.00	
200.00†	0.000	63.838	200.00	0.00	0.00	0.00	2752797.41	1467805.74	40.6141171	-106.3904158	0.00	
300.00	0.000	63.838	300.00	0.00	0.00	0.00	2752797.41	1467805.74	40.6141171	-106.3904158	0.00	End of Tangent
400.00†	2.000	63.838	399.98	-0.42	0.77	1.57	2752798.98	1467806.49	40.6141192	-106.3904101	2.00	
500.00†	4.000	63.838	499.84	-1.67	3.08	6.26	2752803.70	1467808.75	40.6141256	-106.3903932	2.00	
600.00†	6.000	63.838	599.45	-3.76	6.92	14.09	2752811.56	1467812.52	40.6141361	-106.3903650	2.00	
700.00†	8.000	63.838	698.70	-6.69	12.29	25.02	2752822.56	1467817.78	40.6141509	-106.3903256	2.00	
800.00†	10.000	63.838	797.47	-10.44	19.19	39.06	2752836.66	1467824.54	40.6141698	-106.3902751	2.00	
900.00†	12.000	63.838	895.62	-15.01	27.60	56.19	2752853.87	1467832.78	40.6141929	-106.3902134	2.00	
1000.00†	14.000	63.838	993.06	-20.41	37.52	76.38	2752874.16	1467842.49	40.6142201	-106.3901407	2.00	
1100.00†	16.000	63.838	1089.64	-26.61	48.93	99.61	2752897.50	1467853.67	40.6142514	-106.3900570	2.00	
1200.00†	18.000	63.838	1185.27	-33.62	61.82	125.85	2752923.87	1467866.29	40.6142868	-106.3899625	2.00	
1260.29	19.206	63.838	1242.41	-38.24	70.30	143.11	2752941.22	1467874.60	40.6143101	-106.3899003	2.00	Build (XS)
1300.00†	19.206	63.838	1279.91	-41.37	76.06	154.84	2752953.00	1467880.24	40.6143259	-106.3898581	0.00	
1400.00†	19.206	63.838	1374.34	-49.26	90.56	184.36	2752982.67	1467894.45	40.6143657	-106.3897517	0.00	
1500.00†	19.206	63.838	1468.78	-57.14	105.07	213.89	2753012.34	1467908.65	40.6144055	-106.3896454	0.00	
1600.00†	19.206	63.838	1563.21	-65.03	119.57	243.41	2753042.01	1467922.86	40.6144453	-106.3895390	0.00	
1700.00†	19.206	63.838	1657.64	-72.92	134.08	272.94	2753071.68	1467937.07	40.6144851	-106.3894327	0.00	
1800.00†	19.206	63.838	1752.08	-80.81	148.58	302.47	2753101.35	1467951.27	40.6145250	-106.3893263	0.00	
1900.00†	19.206	63.838	1846.51	-88.70	163.08	331.99	2753131.02	1467965.48	40.6145648	-106.3892200	0.00	
2000.00†	19.206	63.838	1940.95	-96.59	177.59	361.52	2753160.69	1467979.69	40.6146046	-106.3891136	0.00	
2100.00†	19.206	63.838	2035.38	-104.48	192.09	391.05	2753190.36	1467993.89	40.6146444	-106.3890073	0.00	
2200.00†	19.206	63.838	2129.82	-112.36	206.60	420.57	2753220.03	1468008.10	40.6146842	-106.3889009	0.00	
2300.00†	19.206	63.838	2224.25	-120.25	221.10	450.10	2753249.69	1468022.30	40.6147240	-106.3887946	0.00	
2400.00†	19.206	63.838	2318.68	-128.14	235.61	479.62	2753279.36	1468036.51	40.6147638	-106.3886882	0.00	
2500.00†	19.206	63.838	2413.12	-136.03	250.11	509.15	2753309.03	1468050.72	40.6148036	-106.3885819	0.00	
2600.00†	19.206	63.838	2507.55	-143.92	264.61	538.68	2753338.70	1468064.92	40.6148434	-106.3884755	0.00	
2700.00†	19.206	63.838	2601.99	-151.81	279.12	568.20	2753368.37	1468079.13	40.6148832	-106.3883692	0.00	
2800.00†	19.206	63.838	2696.42	-159.69	293.62	597.73	2753398.04	1468093.34	40.6149230	-106.3882628	0.00	
2900.00†	19.206	63.838	2790.86	-167.58	308.13	627.26	2753427.71	1468107.54	40.6149629	-106.3881565	0.00	
3000.00†	19.206	63.838	2885.29	-175.47	322.63	656.78	2753457.38	1468121.75	40.6150027	-106.3880501	0.00	
3100.00†	19.206	63.838	2979.72	-183.36	337.13	686.31	2753487.05	1468135.96	40.6150425	-106.3879438	0.00	
3200.00†	19.206	63.838	3074.16	-191.25	351.64	715.84	2753516.72	1468150.16	40.6150823	-106.3878374	0.00	
3300.00†	19.206	63.838	3168.59	-199.14	366.14	745.36	2753546.39	1468164.37	40.6151221	-106.3877311	0.00	
3400.00†	19.206	63.838	3263.03	-207.03	380.65	774.89	2753576.06	1468178.58	40.6151619	-106.3876247	0.00	
3500.00†	19.206	63.838	3357.46	-214.91	395.15	804.41	2753605.73	1468192.78	40.6152017	-106.3875184	0.00	
3600.00†	19.206	63.838	3451.90	-222.80	409.65	833.94	2753635.40	1468206.99	40.6152415	-106.3874120	0.00	
3700.00†	19.206	63.838	3546.33	-230.69	424.16	863.47	2753665.07	1468221.20	40.6152813	-106.3873057	0.00	
3800.00†	19.206	63.838	3640.76	-238.58	438.66	892.99	2753694.74	1468235.40	40.6153211	-106.3871993	0.00	
3900.00†	19.206	63.838	3735.20	-246.47	453.17	922.52	2753724.41	1468249.61	40.6153609	-106.3870930	0.00	
4000.00†	19.206	63.838	3829.63	-254.36	467.67	952.05	2753754.08	1468263.82	40.6154007	-106.3869866	0.00	
4100.00†	19.206	63.838	3924.07	-262.25	482.18	981.57	2753783.75	1468278.02	40.6154406	-106.3868803	0.00	
4200.00†	19.206	63.838	4018.50	-270.13	496.68	1011.10	2753813.42	1468292.23	40.6154804	-106.3867739	0.00	



Planned Wellpath Report

JANET 0780 10S-4H9 (REV-B.0) PWP

Page 3 of 9



REFERENCE WELLPATH IDENTIFICATION			
Operator	FULCRUM ENERGY OPERATING	Well	JANET 0780 10S-4H9
Field	JACKSON COUNTY (NAD83/TN)	API	05-057-06637
Facility	SEC.04-T07N-R80W	Wellbore	JANET 0780 10S-4H9 PWB
Slot	SLOT#04 JANET 0780 10S-4H9 (378'FNL & 859'FEL,SEC.04)		

WELLPATH DATA (220 stations) † = interpolated, ‡ = extrapolated station

MD [ft]	Inclination [°]	Azimuth [°]	TVD [ft]	Vert Sect [ft]	North [ft]	East [ft]	Grid East [US ft]	Grid North [US ft]	Latitude	Longitude	DLS [°/100ft]	Comments
4300.00†	19.206	63.838	4112.93	-278.02	511.18	1040.62	2753843.09	1468306.44	40.6155202	-106.3866676	0.00	
4400.00†	19.206	63.838	4207.37	-285.91	525.69	1070.15	2753872.76	1468320.64	40.6155600	-106.3865612	0.00	
4500.00†	19.206	63.838	4301.80	-293.80	540.19	1099.68	2753902.43	1468334.85	40.6155998	-106.3864548	0.00	
4600.00†	19.206	63.838	4396.24	-301.69	554.70	1129.20	2753932.10	1468349.06	40.6156396	-106.3863485	0.00	
4700.00†	19.206	63.838	4490.67	-309.58	569.20	1158.73	2753961.77	1468363.26	40.6156794	-106.3862421	0.00	
4800.00†	19.206	63.838	4585.11	-317.46	583.70	1188.26	2753991.44	1468377.47	40.6157192	-106.3861358	0.00	
4900.00†	19.206	63.838	4679.54	-325.35	598.21	1217.78	2754021.11	1468391.68	40.6157590	-106.3860294	0.00	
5000.00†	19.206	63.838	4773.97	-333.24	612.71	1247.31	2754050.78	1468405.88	40.6157988	-106.3859231	0.00	
5100.00†	19.206	63.838	4868.41	-341.13	627.22	1276.83	2754080.45	1468420.09	40.6158386	-106.3858167	0.00	
5200.00†	19.206	63.838	4962.84	-349.02	641.72	1306.36	2754110.12	1468434.30	40.6158784	-106.3857104	0.00	
5300.00†	19.206	63.838	5057.28	-356.91	656.22	1335.89	2754139.79	1468448.50	40.6159182	-106.3856040	0.00	
5400.00†	19.206	63.838	5151.71	-364.80	670.73	1365.41	2754169.46	1468462.71	40.6159580	-106.3854977	0.00	
5500.00†	19.206	63.838	5246.15	-372.68	685.23	1394.94	2754199.13	1468476.91	40.6159979	-106.3853913	0.00	
5600.00†	19.206	63.838	5340.58	-380.57	699.74	1424.47	2754228.79	1468491.12	40.6160377	-106.3852850	0.00	
5700.00†	19.206	63.838	5435.01	-388.46	714.24	1453.99	2754258.46	1468505.33	40.6160775	-106.3851786	0.00	
5800.00†	19.206	63.838	5529.45	-396.35	728.75	1483.52	2754288.13	1468519.53	40.6161173	-106.3850722	0.00	
5900.00†	19.206	63.838	5623.88	-404.24	743.25	1513.05	2754317.80	1468533.74	40.6161571	-106.3849659	0.00	
6000.00†	19.206	63.838	5718.32	-412.13	757.75	1542.57	2754347.47	1468547.95	40.6161969	-106.3848595	0.00	
6100.00†	19.206	63.838	5812.75	-420.02	772.26	1572.10	2754377.14	1468562.15	40.6162367	-106.3847532	0.00	
6200.00†	19.206	63.838	5907.19	-427.90	786.76	1601.62	2754406.81	1468576.36	40.6162765	-106.3846468	0.00	
6300.00†	19.206	63.838	6001.62	-435.79	801.27	1631.15	2754436.48	1468590.57	40.6163163	-106.3845405	0.00	
6400.00†	19.206	63.838	6096.05	-443.68	815.77	1660.68	2754466.15	1468604.77	40.6163561	-106.3844341	0.00	
6500.00†	19.206	63.838	6190.49	-451.57	830.27	1690.20	2754495.82	1468618.98	40.6163959	-106.3843278	0.00	
6600.00†	19.206	63.838	6284.92	-459.46	844.78	1719.73	2754525.49	1468633.19	40.6164357	-106.3842214	0.00	
6700.00†	19.206	63.838	6379.36	-467.35	859.28	1749.26	2754555.16	1468647.39	40.6164755	-106.3841150	0.00	
6800.00†	19.206	63.838	6473.79	-475.23	873.79	1778.78	2754584.83	1468661.60	40.6165153	-106.3840087	0.00	
6900.00†	19.206	63.838	6568.23	-483.12	888.29	1808.31	2754614.50	1468675.81	40.6165551	-106.3839023	0.00	
7000.00†	19.206	63.838	6662.66	-491.01	902.79	1837.83	2754644.17	1468690.01	40.6165949	-106.3837960	0.00	
7100.00†	19.206	63.838	6757.09	-498.90	917.30	1867.36	2754673.84	1468704.22	40.6166347	-106.3836896	0.00	
7200.00†	19.206	63.838	6851.53	-506.79	931.80	1896.89	2754703.51	1468718.43	40.6166745	-106.3835833	0.00	
7300.00†	19.206	63.838	6945.96	-514.68	946.31	1926.41	2754733.18	1468732.63	40.6167143	-106.3834769	0.00	
7400.00†	19.206	63.838	7040.40	-522.57	960.81	1955.94	2754762.85	1468746.84	40.6167542	-106.3833706	0.00	
7500.00†	19.206	63.838	7134.83	-530.45	975.32	1985.47	2754792.52	1468761.05	40.6167940	-106.3832642	0.00	
7600.00†	19.206	63.838	7229.27	-538.34	989.82	2014.99	2754822.19	1468775.25	40.6168338	-106.3831578	0.00	
7700.00†	19.206	63.838	7323.70	-546.23	1004.32	2044.52	2754851.86	1468789.46	40.6168736	-106.3830515	0.00	
7800.00†	19.206	63.838	7418.13	-554.12	1018.83	2074.04	2754881.53	1468803.67	40.6169134	-106.3829451	0.00	
7900.00†	19.206	63.838	7512.57	-562.01	1033.33	2103.57	2754911.20	1468817.87	40.6169532	-106.3828388	0.00	
8000.00†	19.206	63.838	7607.00	-569.90	1047.84	2133.10	2754940.87	1468832.08	40.6169930	-106.3827324	0.00	
8045.71	19.206	63.838	7650.17	-573.50	1054.47	2146.60	2754954.43	1468838.57	40.6170112	-106.3826838	0.00	KOP
8100.00†	17.790	76.812	7701.67	-575.78	1060.30	2162.69	2754970.58	1468844.24	40.6170272	-106.3826258	8.00	
8200.00†	17.766	103.225	7797.05	-569.43	1060.29	2192.46	2755000.36	1468843.94	40.6170272	-106.3825186	8.00	
8300.00†	20.950	125.566	7891.52	-549.58	1046.38	2221.91	2755029.66	1468829.73	40.6169890	-106.3824125	8.00	
8400.00†	26.194	140.800	7983.23	-516.59	1018.83	2250.44	2755057.92	1468801.90	40.6169133	-106.3823097	8.00	
8500.00†	32.515	150.866	8070.40	-471.11	978.19	2277.52	2755084.58	1468760.99	40.6168018	-106.3822122	8.00	
8600.00†	39.396	157.849	8151.33	-414.03	925.24	2302.61	2755109.14	1468707.79	40.6166564	-106.3821219	8.00	



Planned Wellpath Report

JANET 0780 10S-4H9 (REV-B.0) PWP

Page 4 of 9



REFERENCE WELLPATH IDENTIFICATION			
Operator	FULCRUM ENERGY OPERATING	Well	JANET 0780 10S-4H9
Field	JACKSON COUNTY (NAD83/TN)	API	05-057-06637
Facility	SEC.04-T07N-R80W	Wellbore	JANET 0780 10S-4H9 PWB
Slot	SLOT#04 JANET 0780 10S-4H9 (378'FNL & 859'FEL,SEC.04)		

WELLPATH DATA (220 stations) † = interpolated, ‡ = extrapolated station

MD [ft]	Inclination [°]	Azimuth [°]	TVD [ft]	Vert Sect [ft]	North [ft]	East [ft]	Grid East [US ft]	Grid North [US ft]	Latitude	Longitude	DLS [°/100ft]	Comments
8700.00†	46.585	163.010	8224.45	-346.46	861.01	2325.23	2755131.11	1468643.33	40.6164801	-106.3820404	8.00	
8800.00†	53.957	167.058	8288.34	-269.71	786.75	2344.93	2755150.06	1468568.88	40.6162763	-106.3819695	8.00	
8900.00†	61.442	170.406	8341.75	-185.28	703.91	2361.33	2755165.63	1468485.89	40.6160489	-106.3819105	8.00	
9000.00†	68.998	173.305	8383.64	-94.81	614.10	2374.11	2755177.51	1468395.96	40.6158024	-106.3818644	8.00	
9100.00†	76.598	175.922	8413.19	-0.06	519.07	2383.03	2755185.47	1468300.84	40.6155416	-106.3818324	8.00	
9200.00†	84.223	178.378	8429.84	97.13	420.67	2387.90	2755189.35	1468202.40	40.6152715	-106.3818148	8.00	
9284.74	90.693	180.404	8433.60 ¹	179.98	336.07	2388.80	2755189.40	1468117.80	40.6150393	-106.3818116	8.00	LP
9300.00†	90.693	180.404	8433.42	194.87	320.81	2388.69	2755189.14	1468102.54	40.6149974	-106.3818120	0.00	
9400.00†	90.693	180.404	8432.21	292.42	220.82	2387.98	2755187.43	1468002.56	40.6147229	-106.3818146	0.00	
9500.00†	90.693	180.404	8431.00	389.97	120.83	2387.28	2755185.72	1467902.59	40.6144485	-106.3818172	0.00	
9600.00†	90.693	180.404	8429.79	487.52	20.84	2386.57	2755184.01	1467802.61	40.6141740	-106.3818198	0.00	
9700.00†	90.693	180.404	8428.58	585.07	-79.15	2385.87	2755182.30	1467702.64	40.6138996	-106.3818223	0.00	
9800.00†	90.693	180.404	8427.37	682.62	-179.14	2385.16	2755180.59	1467602.66	40.6136251	-106.3818249	0.00	
9900.00†	90.693	180.404	8426.16	780.17	-279.13	2384.46	2755178.88	1467502.69	40.6133507	-106.3818275	0.00	
10000.00†	90.693	180.404	8424.95	877.72	-379.12	2383.75	2755177.17	1467402.71	40.6130762	-106.3818301	0.00	
10100.00†	90.693	180.404	8423.74	975.27	-479.11	2383.04	2755175.46	1467302.74	40.6128017	-106.3818326	0.00	
10200.00†	90.693	180.404	8422.53	1072.82	-579.10	2382.34	2755173.75	1467202.76	40.6125273	-106.3818352	0.00	
10300.00†	90.693	180.404	8421.32	1170.37	-679.09	2381.63	2755172.05	1467102.78	40.6122528	-106.3818378	0.00	
10400.00†	90.693	180.404	8420.11	1267.92	-779.08	2380.93	2755170.34	1467002.81	40.6119784	-106.3818404	0.00	
10500.00†	90.693	180.404	8418.90	1365.47	-879.07	2380.22	2755168.63	1466902.83	40.6117039	-106.3818429	0.00	
10600.00†	90.693	180.404	8417.69	1463.02	-979.06	2379.52	2755166.92	1466802.86	40.6114295	-106.3818455	0.00	
10700.00†	90.693	180.404	8416.48	1560.57	-1079.05	2378.81	2755165.21	1466702.88	40.6111550	-106.3818481	0.00	
10800.00†	90.693	180.404	8415.27	1658.12	-1179.04	2378.11	2755163.50	1466602.91	40.6108806	-106.3818507	0.00	
10900.00†	90.693	180.404	8414.06	1755.66	-1279.03	2377.40	2755161.79	1466502.93	40.6106061	-106.3818532	0.00	
11000.00†	90.693	180.404	8412.85	1853.21	-1379.02	2376.70	2755160.08	1466402.96	40.6103317	-106.3818558	0.00	
11100.00†	90.693	180.404	8411.64	1950.76	-1479.01	2375.99	2755158.37	1466302.98	40.6100572	-106.3818584	0.00	
11200.00†	90.693	180.404	8410.43	2048.31	-1579.00	2375.29	2755156.66	1466203.00	40.6097828	-106.3818610	0.00	
11300.00†	90.693	180.404	8409.22	2145.86	-1678.99	2374.58	2755154.95	1466103.03	40.6095083	-106.3818635	0.00	
11400.00†	90.693	180.404	8408.01	2243.41	-1778.99	2373.87	2755153.24	1466003.05	40.6092339	-106.3818661	0.00	
11500.00†	90.693	180.404	8406.80	2340.96	-1878.98	2373.17	2755151.53	1465903.08	40.6089594	-106.3818687	0.00	
11600.00†	90.693	180.404	8405.59	2438.51	-1978.97	2372.46	2755149.82	1465803.10	40.6086850	-106.3818713	0.00	
11700.00†	90.693	180.404	8404.38	2536.06	-2078.96	2371.76	2755148.11	1465703.13	40.6084105	-106.3818739	0.00	
11800.00†	90.693	180.404	8403.17	2633.61	-2178.95	2371.05	2755146.41	1465603.15	40.6081361	-106.3818764	0.00	
11806.15	90.693	180.404	8403.10 ²	2639.61	-2185.10	2371.01	2755146.30	1465597.00	40.6081192	-106.3818766	0.00	WP1
11808.24	90.729	180.425	8403.07	2641.65	-2187.19	2370.99	2755146.26	1465594.91	40.6081134	-106.3818766	2.00	3D Arc (J)
11900.00†	90.729	180.425	8401.91	2731.15	-2278.94	2370.31	2755144.66	1465503.18	40.6078616	-106.3818791	0.00	
12000.00†	90.729	180.425	8400.63	2828.70	-2378.92	2369.57	2755142.92	1465403.20	40.6075871	-106.3818818	0.00	
12100.00†	90.729	180.425	8399.36	2926.24	-2478.91	2368.83	2755141.17	1465303.23	40.6073127	-106.3818845	0.00	
12200.00†	90.729	180.425	8398.09	3023.78	-2578.90	2368.09	2755139.43	1465203.25	40.6070382	-106.3818872	0.00	
12300.00†	90.729	180.425	8396.81	3121.32	-2678.89	2367.35	2755137.68	1465103.28	40.6067638	-106.3818899	0.00	
12400.00†	90.729	180.425	8395.54	3218.86	-2778.88	2366.61	2755135.94	1465003.31	40.6064893	-106.3818926	0.00	
12500.00†	90.729	180.425	8394.27	3316.40	-2878.87	2365.87	2755134.19	1464903.33	40.6062149	-106.3818953	0.00	
12600.00†	90.729	180.425	8392.99	3413.94	-2978.86	2365.13	2755132.45	1464803.36	40.6059404	-106.3818980	0.00	
12700.00†	90.729	180.425	8391.72	3511.48	-3078.85	2364.38	2755130.70	1464703.38	40.6056660	-106.3819008	0.00	
12800.00†	90.729	180.425	8390.45	3609.02	-3178.84	2363.64	2755128.96	1464603.41	40.6053915	-106.3819035	0.00	



Planned Wellpath Report

JANET 0780 10S-4H9 (REV-B.0) PWP

Page 5 of 9



REFERENCE WELLPATH IDENTIFICATION

Operator	FULCRUM ENERGY OPERATING	Well	JANET 0780 10S-4H9
Field	JACKSON COUNTY (NAD83/TN)	API	05-057-06637
Facility	SEC.04-T07N-R80W	Wellbore	JANET 0780 10S-4H9 PWB
Slot	SLOT#04 JANET 0780 10S-4H9 (378'FNL & 859'FEL,SEC.04)		

WELLPATH DATA (220 stations) † = interpolated, ‡ = extrapolated station

MD [ft]	Inclination [°]	Azimuth [°]	TVD [ft]	Vert Sect [ft]	North [ft]	East [ft]	Grid East [US ft]	Grid North [US ft]	Latitude	Longitude	DLS [°/100ft]	Comments
12900.00†	90.729	180.425	8389.17	3706.56	-3278.83	2362.90	2755127.21	1464503.44	40.6051171	-106.3819062	0.00	
13000.00†	90.729	180.425	8387.90	3804.11	-3378.82	2362.16	2755125.47	1464403.46	40.6048426	-106.3819089	0.00	
13100.00†	90.729	180.425	8386.63	3901.65	-3478.80	2361.42	2755123.72	1464303.49	40.6045682	-106.3819116	0.00	
13200.00†	90.729	180.425	8385.35	3999.19	-3578.79	2360.68	2755121.98	1464203.51	40.6042937	-106.3819143	0.00	
13300.00†	90.729	180.425	8384.08	4096.73	-3678.78	2359.94	2755120.23	1464103.54	40.6040193	-106.3819170	0.00	
13400.00†	90.729	180.425	8382.81	4194.27	-3778.77	2359.20	2755118.49	1464003.56	40.6037448	-106.3819197	0.00	
13500.00†	90.729	180.425	8381.54	4291.81	-3878.76	2358.45	2755116.74	1463903.59	40.6034704	-106.3819224	0.00	
13600.00†	90.729	180.425	8380.26	4389.35	-3978.75	2357.71	2755115.00	1463803.62	40.6031959	-106.3819251	0.00	
13700.00†	90.729	180.425	8378.99	4486.89	-4078.74	2356.97	2755113.25	1463703.64	40.6029215	-106.3819278	0.00	
13800.00†	90.729	180.425	8377.72	4584.43	-4178.73	2356.23	2755111.50	1463603.67	40.6026470	-106.3819305	0.00	
13900.00†	90.729	180.425	8376.44	4681.98	-4278.72	2355.49	2755109.76	1463503.69	40.6023726	-106.3819332	0.00	
13990.52	90.729	180.425	8375.29	4770.27	-4369.23	2354.82	2755108.18	1463413.20	40.6021242	-106.3819356	0.00	WP2
14000.00†	91.014	180.425	8375.15	4779.52	-4378.71	2354.75	2755108.01	1463403.72	40.6020981	-106.3819359	3.00	
14100.00†	94.014	180.425	8370.76	4876.96	-4478.60	2354.01	2755106.27	1463303.85	40.6018240	-106.3819386	3.00	
14200.00†	97.014	180.424	8361.15	4974.05	-4578.12	2353.27	2755104.53	1463204.34	40.6015508	-106.3819413	3.00	
14300.00†	100.014	180.424	8346.35	5070.51	-4677.00	2352.54	2755102.81	1463105.47	40.6012794	-106.3819440	3.00	
14400.00†	103.014	180.424	8326.39	5166.09	-4774.98	2351.81	2755101.10	1463007.51	40.6010105	-106.3819466	3.00	
14500.00†	106.014	180.424	8301.33	5260.51	-4871.77	2351.10	2755099.41	1462910.73	40.6007448	-106.3819492	3.00	
14600.00†	109.014	180.424	8271.24	5353.53	-4967.12	2350.39	2755097.75	1462815.39	40.6004831	-106.3819518	3.00	
14700.00†	112.014	180.424	8236.20	5444.88	-5060.77	2349.70	2755096.12	1462721.76	40.6002260	-106.3819543	3.00	
14719.92	112.611	180.424	8228.64	5462.85	-5079.19	2349.56	2755095.79	1462703.34	40.6001754	-106.3819548	3.00	End of 3D Arc (XS)
14800.00†	112.611	180.424	8197.85	5534.97	-5153.12	2349.01	2755094.51	1462629.42	40.5999725	-106.3819568	0.00	
14900.00†	112.611	180.424	8159.40	5625.02	-5245.43	2348.33	2755092.90	1462537.13	40.5997192	-106.3819593	0.00	
15000.00†	112.611	180.424	8120.95	5715.07	-5337.74	2347.65	2755091.29	1462444.83	40.5994658	-106.3819618	0.00	
15014.61	112.611	180.424	8115.33	5728.23	-5351.23	2347.55	2755091.05	1462431.34	40.5994288	-106.3819622	0.00	End of Tangent (XS)
15100.00†	110.050	180.424	8084.28	5805.81	-5430.76	2346.96	2755089.66	1462351.83	40.5992105	-106.3819643	3.00	
15200.00†	107.050	180.424	8052.47	5898.28	-5525.55	2346.26	2755088.01	1462257.05	40.5989503	-106.3819669	3.00	
15300.00†	104.050	180.425	8025.66	5992.25	-5621.88	2345.54	2755086.33	1462160.74	40.5986859	-106.3819695	3.00	
15400.00†	101.050	180.425	8003.94	6087.46	-5719.47	2344.82	2755084.62	1462063.15	40.5984180	-106.3819721	3.00	
15500.00†	98.050	180.425	7987.35	6183.64	-5818.07	2344.09	2755082.90	1461964.57	40.5981474	-106.3819748	3.00	
15600.00†	95.050	180.426	7975.94	6280.55	-5917.41	2343.35	2755081.17	1461865.25	40.5978747	-106.3819775	3.00	
15621.13	94.416	180.426	7974.20 ³	6301.08	-5938.46	2343.19	2755080.80	1461844.20	40.5978169	-106.3819780	3.00	WP3
15700.00†	94.416	180.426	7968.13	6377.80	-6017.10	2342.61	2755079.43	1461765.57	40.5976011	-106.3819802	0.00	
15800.00†	94.416	180.426	7960.43	6475.05	-6116.80	2341.87	2755077.68	1461665.89	40.5973274	-106.3819829	0.00	
15900.00†	94.416	180.426	7952.73	6572.31	-6216.50	2341.13	2755075.94	1461566.20	40.5970538	-106.3819856	0.00	
16000.00†	94.416	180.426	7945.03	6669.57	-6316.20	2340.39	2755074.20	1461466.52	40.5967801	-106.3819883	0.00	
16100.00†	94.416	180.426	7937.33	6766.83	-6415.90	2339.65	2755072.46	1461366.83	40.5965064	-106.3819910	0.00	
16200.00†	94.416	180.426	7929.63	6864.09	-6515.60	2338.91	2755070.72	1461267.15	40.5962328	-106.3819937	0.00	
16300.00†	94.416	180.426	7921.93	6961.35	-6615.30	2338.16	2755068.97	1461167.46	40.5959591	-106.3819964	0.00	
16400.00†	94.416	180.426	7914.23	7058.61	-6715.00	2337.42	2755067.23	1461067.78	40.5956855	-106.3819991	0.00	
16500.00†	94.416	180.426	7906.53	7155.87	-6814.70	2336.68	2755065.49	1460968.09	40.5954118	-106.3820018	0.00	
16600.00†	94.416	180.426	7898.83	7253.13	-6914.40	2335.94	2755063.75	1460868.41	40.5951382	-106.3820045	0.00	
16700.00†	94.416	180.426	7891.13	7350.38	-7014.10	2335.20	2755062.01	1460768.72	40.5948645	-106.3820072	0.00	
16800.00†	94.416	180.426	7883.43	7447.64	-7113.80	2334.46	2755060.26	1460669.04	40.5945908	-106.3820099	0.00	
16878.28	94.416	180.426	7877.40 ⁴	7523.78	-7191.85	2333.88	2755058.90	1460591.00	40.5943766	-106.3820120	0.00	WP4



Planned Wellpath Report

JANET 0780 10S-4H9 (REV-B.0) PWP

Page 6 of 9



REFERENCE WELLPATH IDENTIFICATION

Operator	FULCRUM ENERGY OPERATING	Well	JANET 0780 10S-4H9
Field	JACKSON COUNTY (NAD83/TN)	API	05-057-06637
Facility	SEC.04-T07N-R80W	Wellbore	JANET 0780 10S-4H9 PWB
Slot	SLOT#04 JANET 0780 10S-4H9 (378'FNL & 859'FEL,SEC.04)		

WELLPATH DATA (220 stations) † = interpolated, ‡ = extrapolated station

MD [ft]	Inclination [°]	Azimuth [°]	TVD [ft]	Vert Sect [ft]	North [ft]	East [ft]	Grid East [US ft]	Grid North [US ft]	Latitude	Longitude	DLS [°/100ft]	Comments
16900.00†	95.068	180.425	7875.60	7544.89	-7213.49	2333.72	2755058.52	1460569.36	40.5943172	-106.3820126	3.00	
17000.00†	98.068	180.422	7864.17	7641.79	-7312.82	2332.98	2755056.79	1460470.05	40.5940446	-106.3820153	3.00	
17100.00†	101.068	180.418	7847.55	7737.97	-7411.42	2332.26	2755055.08	1460371.46	40.5937739	-106.3820179	3.00	
17200.00†	104.068	180.415	7825.79	7833.18	-7509.01	2331.55	2755053.39	1460273.89	40.5935061	-106.3820205	3.00	
17222.77	104.751	180.414	7820.13	7854.69	-7531.06	2331.39	2755053.01	1460251.84	40.5934455	-106.3820211	3.00	End of 3D Arc (XS)
17300.00†	104.751	180.414	7800.46	7927.55	-7605.74	2330.85	2755051.72	1460177.17	40.5932405	-106.3820231	0.00	
17400.00†	104.751	180.414	7775.00	8021.89	-7702.44	2330.15	2755050.05	1460080.48	40.5929751	-106.3820256	0.00	
17500.00†	104.751	180.414	7749.54	8116.22	-7799.15	2329.45	2755048.38	1459983.79	40.5927097	-106.3820282	0.00	
17522.54	104.751	180.414	7743.80	8137.49	-7820.94	2329.30	2755048.00	1459962.00	40.5926499	-106.3820287	0.00	WP5
17600.00†	103.202	180.417	7725.09	8210.81	-7896.11	2328.75	2755046.70	1459886.85	40.5924436	-106.3820307	2.00	
17700.00†	101.202	180.421	7703.96	8306.16	-7993.84	2328.03	2755045.00	1459789.13	40.5921753	-106.3820333	2.00	
17800.00†	99.202	180.425	7686.25	8402.16	-8092.25	2327.31	2755043.29	1459690.73	40.5919052	-106.3820360	2.00	
17851.47	98.172	180.427	7678.47	8451.79	-8143.12	2326.93	2755042.40	1459639.87	40.5917655	-106.3820374	2.00	End of 3D Arc (XS)
17900.00†	98.172	180.427	7671.58	8498.65	-8191.16	2326.57	2755041.56	1459591.83	40.5916337	-106.3820387	0.00	
18000.00†	98.172	180.427	7657.36	8595.21	-8290.14	2325.83	2755039.83	1459492.87	40.5913620	-106.3820414	0.00	
18100.00†	98.172	180.427	7643.15	8691.76	-8389.13	2325.10	2755038.10	1459393.90	40.5910903	-106.3820440	0.00	
18200.00†	98.172	180.427	7628.93	8788.32	-8488.11	2324.36	2755036.36	1459294.93	40.5908186	-106.3820467	0.00	
18300.00†	98.172	180.427	7614.72	8884.88	-8587.09	2323.62	2755034.63	1459195.97	40.5905469	-106.3820494	0.00	
18400.00†	98.172	180.427	7600.50	8981.44	-8686.07	2322.88	2755032.90	1459097.00	40.5902752	-106.3820521	0.00	
18500.00†	98.172	180.427	7586.29	9077.99	-8785.05	2322.15	2755031.17	1458998.03	40.5900036	-106.3820548	0.00	
18600.00†	98.172	180.427	7572.07	9174.55	-8884.04	2321.41	2755029.44	1458899.07	40.5897319	-106.3820575	0.00	
18700.00†	98.172	180.427	7557.85	9271.11	-8983.02	2320.67	2755027.71	1458800.10	40.5894602	-106.3820602	0.00	
18800.00†	98.172	180.427	7543.64	9367.67	-9082.00	2319.93	2755025.98	1458701.13	40.5891885	-106.3820629	0.00	
18900.00†	98.172	180.427	7529.42	9464.22	-9180.98	2319.19	2755024.24	1458602.17	40.5889168	-106.3820656	0.00	
18919.87	98.172	180.427	7526.60 ⁵	9483.41	-9200.65	2319.05	2755023.90	1458582.50	40.5888628	-106.3820661	0.00	WP6
19000.00†	96.576	180.574	7516.32	9560.90	-9280.11	2318.35	2755022.41	1458503.05	40.5886447	-106.3820686	2.00	
19060.47	95.372	180.683	7510.02	9619.53	-9340.25	2317.69	2755021.14	1458442.92	40.5884797	-106.3820710	2.00	End of 3D Arc (J)
19100.00†	95.372	180.683	7506.32	9657.88	-9379.60	2317.23	2755020.28	1458403.58	40.5883716	-106.3820727	0.00	
19200.00†	95.372	180.683	7496.96	9754.90	-9479.15	2316.04	2755018.09	1458304.05	40.5880984	-106.3820770	0.00	
19300.00†	95.372	180.683	7487.60	9851.92	-9578.71	2314.85	2755015.91	1458204.51	40.5878251	-106.3820813	0.00	
19400.00†	95.372	180.683	7478.24	9948.94	-9678.26	2313.66	2755013.72	1458104.98	40.5875519	-106.3820857	0.00	
19500.00†	95.372	180.683	7468.87	10045.96	-9777.82	2312.47	2755011.53	1458005.44	40.5872786	-106.3820900	0.00	
19600.00†	95.372	180.683	7459.51	10142.98	-9877.37	2311.29	2755009.34	1457905.91	40.5870054	-106.3820943	0.00	
19700.00†	95.372	180.683	7450.15	10240.00	-9976.92	2310.10	2755007.16	1457806.37	40.5867321	-106.3820986	0.00	
19800.00†	95.372	180.683	7440.79	10337.02	-10076.48	2308.91	2755004.97	1457706.84	40.5864588	-106.3821029	0.00	
19900.00†	95.372	180.683	7431.43	10434.04	-10176.03	2307.72	2755002.78	1457607.31	40.5861856	-106.3821072	0.00	
20000.00†	95.372	180.683	7422.06	10531.06	-10275.58	2306.54	2755000.60	1457507.77	40.5859123	-106.3821115	0.00	
20100.00†	95.372	180.683	7412.70	10628.08	-10375.14	2305.35	2754998.41	1457408.24	40.5856391	-106.3821158	0.00	
20200.00†	95.372	180.683	7403.34	10725.10	-10474.69	2304.16	2754996.22	1457308.70	40.5853658	-106.3821201	0.00	
20299.77	95.372	180.683	7394.00 ⁶	10821.90	-10574.01	2302.98	2754994.04	1457209.40	40.5850932	-106.3821244	0.00	BHL



Planned Wellpath Report

JANET 0780 10S-4H9 (REV-B.0) PWP

Page 7 of 9



REFERENCE WELLPATH IDENTIFICATION

Operator	FULCRUM ENERGY OPERATING	Well	JANET 0780 10S-4H9
Field	JACKSON COUNTY (NAD83/TN)	API	05-057-06637
Facility	SEC.04-T07N-R80W	Wellbore	JANET 0780 10S-4H9 PWB
Slot	SLOT#04 JANET 0780 10S-4H9 (378'FNL & 859'FEL,SEC.04)		

HOLE & CASING SECTIONS - Ref Wellbore: JANET 0780 10S-4H9 PWB Ref Wellpath: JANET 0780 10S-4H9 (REV-B.0) PWP

String/Diameter	Start MD [ft]	End MD [ft]	Interval [ft]	Start TVD [ft]	End TVD [ft]	Start N/S [ft]	Start E/W [ft]	End N/S [ft]	End E/W [ft]
16in Conductor	25.50	120.00	94.50	25.50	120.00	0.00	0.00	0.00	0.00
9.625in Casing Surface	25.50	5004.13	4978.63	25.50	4777.87	0.00	0.00	613.31	1248.53
5.5in Casing Production	25.50	20299.77	20274.27	25.50	7394.00	0.00	0.00	-10574.01	2302.98

TARGETS

Name	MD [ft]	TVD [ft]	North [ft]	East [ft]	Grid East [US ft]	Grid North [US ft]	Latitude	Longitude	Shape
6) JANET 0780 10S-4H9 BHL Rev-2 (143'FSL & 1642'FWL,SEC.09)	20299.77	7394.00	-10574.01	2302.98	2754994.04	1457209.40	40.5850932	-106.3821244	point
5) JANET 0780 10S-4H9 WP6	18919.87	7526.60	-9200.65	2319.05	2755023.90	1458582.50	40.5888628	-106.3820661	point
JANET 0780 10S-4H9 WP5	N/A	7643.80	-7820.94	2329.30	2755048.00	1459962.00	40.5926499	-106.3820287	point
4) JANET 0780 10S-4H9 WP4	16878.28	7877.40	-7191.85	2333.88	2755058.90	1460591.00	40.5943766	-106.3820120	point
3) JANET 0780 10S-4H9 WP3	15621.13	7974.20	-5938.46	2343.19	2755080.80	1461844.20	40.5978169	-106.3819780	point
JANET 0780 10S-4H9 BHL (100'FSL & 1636'FWL,SEC.09)	N/A	8046.00	-10574.01	2302.98	2754994.04	1457209.40	40.5850932	-106.3821244	point
JANET 0780 10S-4H9 WP2	N/A	8370.20	-4769.19	2351.85	2755101.20	1463013.30	40.6010264	-106.3819465	point
2) JANET 0780 10S-4H9 WP1	11806.15	8403.10	-2185.10	2371.01	2755146.30	1465597.00	40.6081192	-106.3818766	point
1) JANET 0780 10S-4H9 LP Rev-2 (39'FNL & 1517'FWL,SEC.04)	9284.74	8433.60	336.07	2388.80	2755189.40	1468117.80	40.6150393	-106.3818116	point
JANET 0780 10S-4H9 LP (100'FNL & 1511'FWL,SEC.04)	N/A	8785.00	273.54	2383.18	2755183.16	1468055.33	40.6148676	-106.3818319	point



Planned Wellpath Report

JANET 0780 10S-4H9 (REV-B.0) PWP

Page 8 of 9



REFERENCE WELLPATH IDENTIFICATION

Operator	FULCRUM ENERGY OPERATING	Well	JANET 0780 10S-4H9
Field	JACKSON COUNTY (NAD83/TN)	API	05-057-06637
Facility	SEC.04-T07N-R80W	Wellbore	JANET 0780 10S-4H9 PWB
Slot	SLOT#04 JANET 0780 10S-4H9 (378'FNL & 859'FEL,SEC.04)		

SURVEY PROGRAM - Ref Wellbore: JANET 0780 10S-4H9 PWB Ref Wellpath: JANET 0780 10S-4H9 (REV-B.0) PWP

Start MD [ft]	End MD [ft]	Positional Uncertainty Model	Log Name/Comment	Wellbore
25.50	5004.13	OWSG MWD rev2 - Standard		JANET 0780 10S-4H9 PWB
5004.13	20525.54	BH AutoTrak Curve/eXpress (2019) (HRGM, Short spacing)		JANET 0780 10S-4H9 PWB



Planned Wellpath Report

JANET 0780 10S-4H9 (REV-B.0) PWP

Page 9 of 9



REFERENCE WELLPATH IDENTIFICATION

Operator	FULCRUM ENERGY OPERATING	Well	JANET 0780 10S-4H9
Field	JACKSON COUNTY (NAD83/TN)	API	05-057-06637
Facility	SEC.04-T07N-R80W	Wellbore	JANET 0780 10S-4H9 PWB
Slot	SLOT#04 JANET 0780 10S-4H9 (378'FNL & 859'FEL,SEC.04)		

DESIGN COMMENTS

MD [ft]	Inclination [°]	Azimuth [°]	TVD [ft]	Comment
25.50	0.000	63.838	25.50	Tie On
300.00	0.000	63.838	300.00	End of Tangent
1260.29	19.206	63.838	1242.41	Build (XS)
8045.71	19.206	63.838	7650.17	KOP
9284.74	90.693	180.404	8433.60	LP
11806.15	90.693	180.404	8403.10	WP1
11808.24	90.729	180.425	8403.07	3D Arc (J)
13990.52	90.729	180.425	8375.29	WP2
14719.92	112.611	180.424	8228.64	End of 3D Arc (XS)
15014.61	112.611	180.424	8115.33	End of Tangent (XS)
15621.13	94.416	180.426	7974.20	WP3
16878.28	94.416	180.426	7877.40	WP4
17222.77	104.751	180.414	7820.13	End of 3D Arc (XS)
17522.54	104.751	180.414	7743.80	WP5
17851.47	98.172	180.427	7678.47	End of 3D Arc (XS)
18919.87	98.172	180.427	7526.60	WP6
19060.47	95.372	180.683	7510.02	End of 3D Arc (J)
20299.77	95.372	180.683	7394.00	BHL