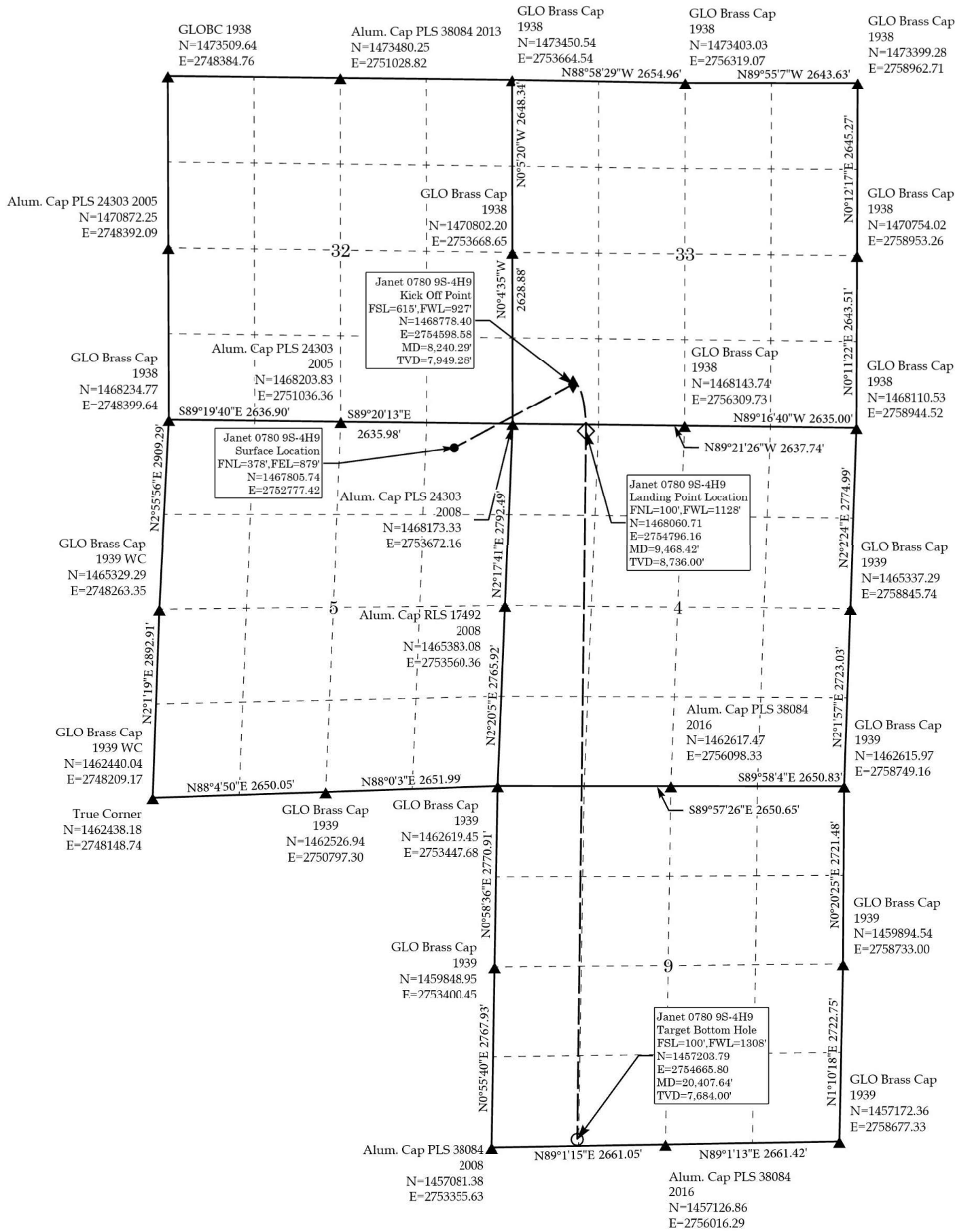


# Janet 0780 9S-4H9

As shown in NE¼NE¼ Sec. 5, W½W½ Sec. 4,  
W½W½ Sec. 9 T7N R80W 6<sup>th</sup> P.M. &  
SE¼SE¼ Sec. 32, SW¼SW¼ Sec. 33 T8N R80W 6<sup>th</sup> P.M.  
Jackson County, Colorado



<p><b>NAD 83 Surface Location</b>                  Lat=40.614117°N                  Long=106.390488°W  <b>STATE PLANE NAD83(CO. NORTH)</b>                  N=1467805.74                  E=2752777.42  <b>Elev. on Graded Pad Surface</b>                  8,097.95'</p>
<p><b>NAD 83 Kick Off Point</b>                  Lat=40.616836°N                  Long=106.383963°W  <b>STATE PLANE NAD83(CO. NORTH)</b>                  N=1468778.40                  E=2754598.58</p>
<p><b>NAD 83 Top of Productive Zone</b>                  Same as Landing Point Location  <b>STATE PLANE NAD83(CO. NORTH)</b>                  Same as Landing Point Location</p>
<p><b>NAD 83 Landing Point Location</b>                  Lat=40.614872°N                  Long=106.383226°W  <b>STATE PLANE NAD83(CO. NORTH)</b>                  N=1468060.71                  E=2754796.16</p>
<p><b>NAD 83 Target Bottom Hole</b>                  Lat=40.585069°N                  Long=106.383306°W  <b>STATE PLANE NAD83(CO. NORTH)</b>                  N=1457203.79                  E=2754665.80  <b>PDOP=1.105</b></p>

**BASIS OF ELEVATION**  
 NAVD88 Computed using GEOID12B as measured using a combination of Static and Kinematic GPS based on an OPUS Solution Report.

**BASIS OF BEARINGS**  
 US STATE PLANE 1983  
 CO NORTH 0501 GRID  
 EPSG: 2231

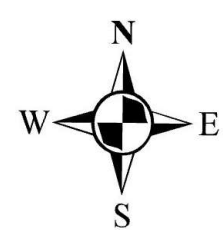
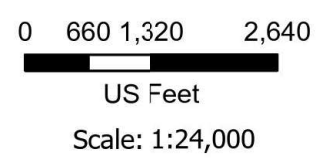
THIS IS TO CERTIFY THAT THE ABOVE PLAT WAS PREPARED FROM FIELD NOTES OF ACTUAL SURVEYS MADE BY ME OR UNDER MY SUPERVISION AND THAT THE SAME ARE TRUE AND CORRECT TO THE BEST OF MY KNOWLEDGE AND BELIEF.



RANDALL R. MILLER  
 COLORADO PLS NO. 38084

## Legend

- Surface Location
- ◆ Kick Off Point
- ◇ Landing Point Location
- Target Bottom Hole
- ▲ Found Corners



**NORTH PARK ENGINEERING & CONSULTING, INC.**  
 P.O. BOX 395  
 WALDEN, CO 80480  
 (970) 723-3725

DATE OF FIELD WORK: 03/20/2025	DRAWING COMPLETION: 5/11/2025
SURVEYED BY: CURTIS UTLEY	DRAWN BY: ALEX LAWTON
CHECKED BY: RANDALL MILLER	