

FULCRUM ENERGY OPERATING



Location: COLORADO Slot: SLOT#03 JANET 0780 9S-4H9 (378°FNL & 879°FEL, SEC.04)
 Field: JACKSON COUNTY (NAD83/TN) Well: JANET 0780 9S-4H9
 Facility: SEC.04-T07N-R80W Wellbore: JANET 0780 9S-4H9 PWB

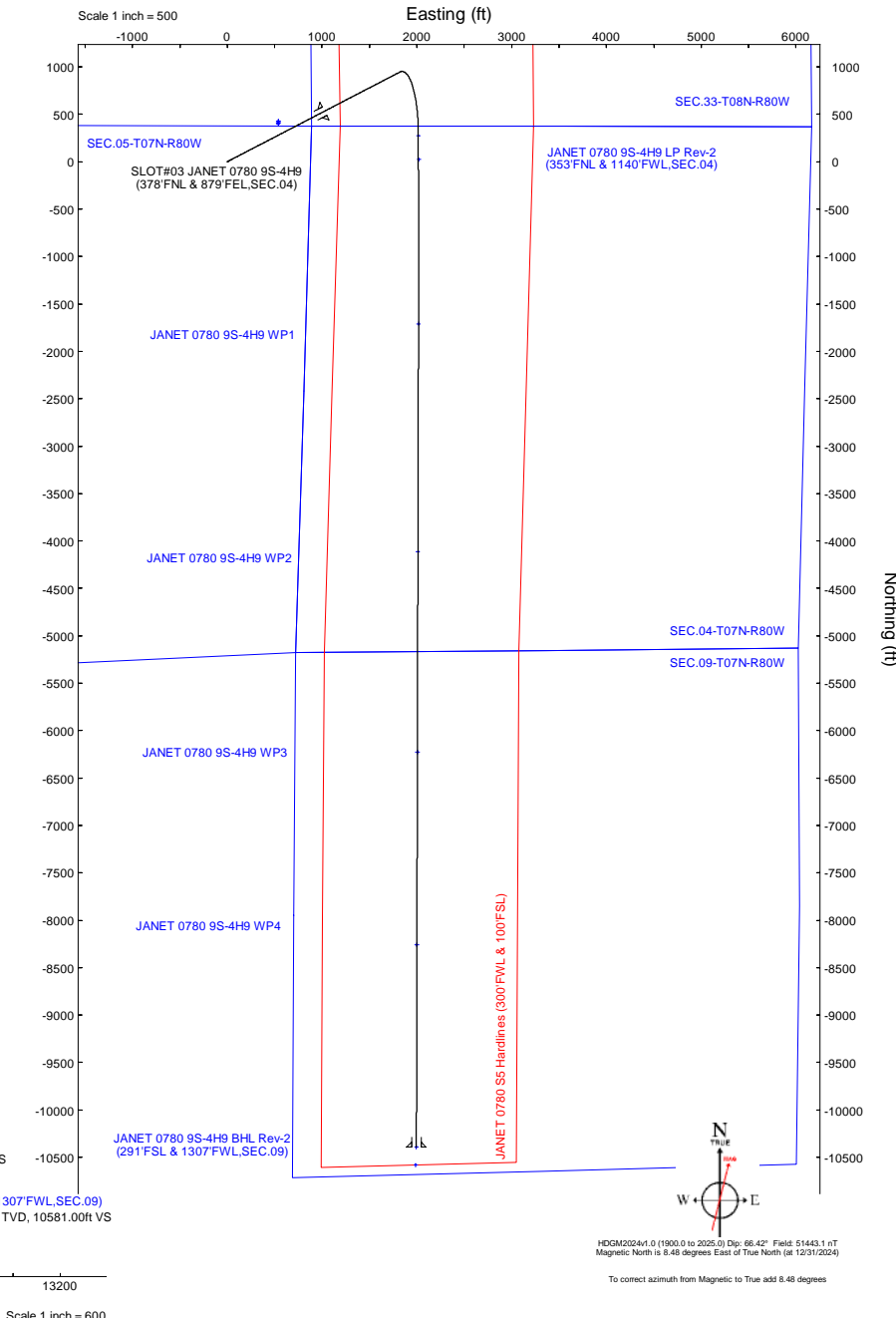
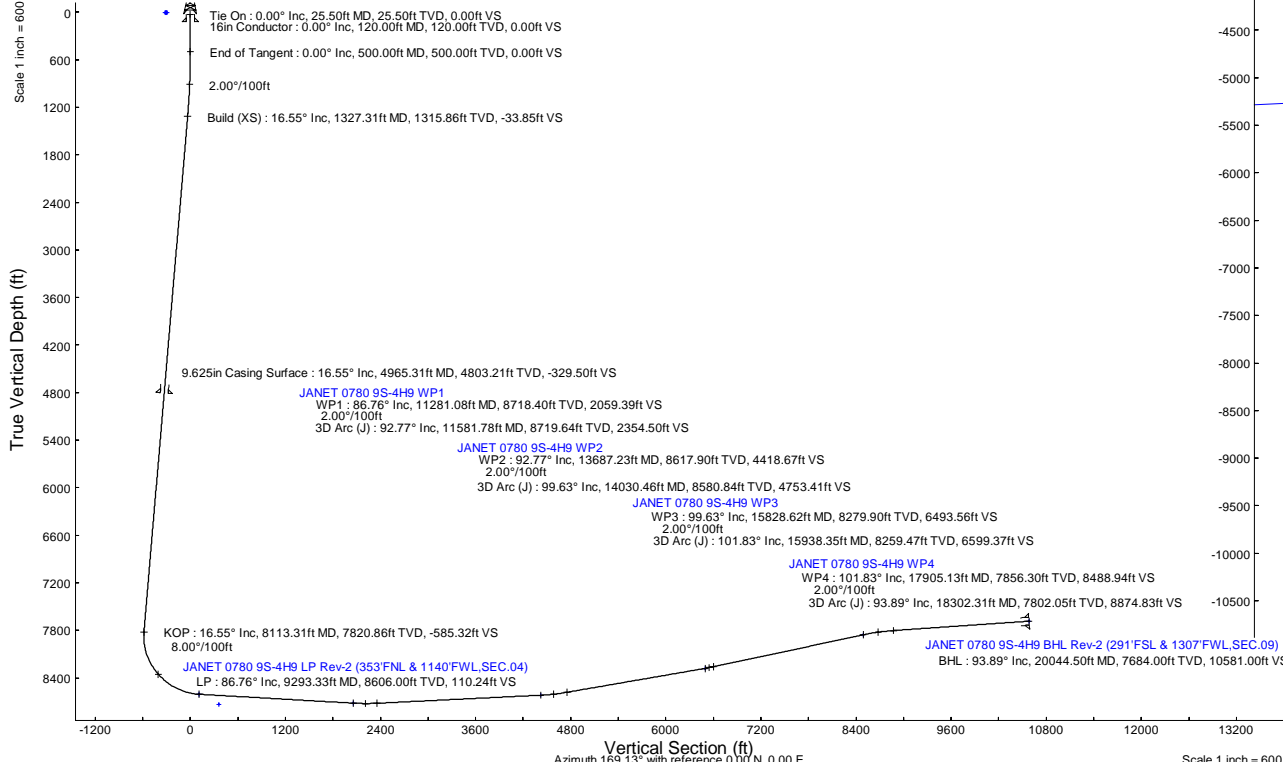
Plot reference wellpath is JANET 0780 9S-4H9 (REV-B.0) PWP
 True vertical depths are referenced to (8099)GL+25.5KB = 8124.5(RKB) (RKB)
 Reference wellpath measured depths are referenced to (8099)GL+25.5KB = 8124.5(RKB) (RKB)
 (8099)GL+25.5KB = 8124.5(RKB) (RKB) to Mean Sea Level: 8124.5 feet
 Mean Sea Level to Ground level (At Slot: SLO7#03 JANET 0780 9S-4H9 (378°FNL & 879°FEL, SEC.04)): 0 feet
 Offset wellpath MDs are referenced to each path's default MD datum
 Grid System: NAD83 / Lambert Colorado SP, Northern Zone (501), US feet
 North Reference: True north
 Scale: True distance
 Coordinates are in feet referenced to Slot
 Depths are in feet
 Created by: matsam01 on 2025-04-30; Database: WA_Denver

Targets									
Name	MD (ft)	TVD (ft)	Local N (ft)	Local E (ft)	Grid East (US ft)	Grid North (US ft)	Latitude	Longitude	
SEC.04-T07N-R80W	N/A	6.50	420.54	538.80	2753320.41	1468220.84	40°36'54.9751"N	106°23'18.7694"W	
SEC.05-T07N-R80W	N/A	6.50	410.54	538.80	2753320.31	1468219.84	40°36'54.8763"N	106°23'18.7694"W	
SEC.09-T07N-R80W	N/A	6.50	399.60	538.00	2753319.39	1468199.90	40°36'54.7682"N	106°23'18.7798"W	
SEC.09-T07N-R80W	N/A	6.50	430.54	538.80	2753320.51	1468230.84	40°36'55.0740"N	106°23'18.7694"W	
JANET 0780 9S-4H9 BHL Rev-2 (291°FSL & 1307°FWL, SEC.09)	20044.50	7684.00	-10391.19	1995.18	2754668.10	1457395.30	40°35'8.1403"N	106°22'59.8963"W	
JANET 0780 9S-4H9 BHL (100°FSL & 1302°FWL, SEC.09)	N/A	7856.00	-10582.88	1988.82	2754669.82	1457203.69	40°35'6.2462"N	106°22'59.9789"W	
JANET 0780 9S-4H9 WP4	17905.13	7856.30	-8259.87	2000.57	2754694.90	1459526.40	40°35'29.2006"N	106°22'59.8241"W	
JANET 0780 9S-4H9 WP3	15828.62	8279.90	-6227.07	2005.66	2754720.40	1461559.00	40°35'49.2874"N	106°22'59.7560"W	
JANET 0780 9S-4H9 LP (1100°FNL & 1124°FWL, SEC.04)	9293.33	8606.00	274.86	2016.13	2754736.16	1468060.33	40°36'53.5348"N	106°22'59.6134"W	
JANET 0780 9S-4H9 WP2	13687.23	8617.90	-4113.26	2011.04	2754747.00	1463672.60	40°36'10.1746"N	106°22'59.6841"W	
JANET 0780 9S-4H9 WP1	11281.08	8718.40	-1709.71	2017.10	2754777.20	1456075.90	40°36'33.9247"N	106°22'59.6030"W	
JANET 0780 9S-4H9 LP Rev-2 (353°FNL & 1140°FWL, SEC.04)	N/A	8736.00	21.86	2021.41	2754788.90	1467807.30	40°36'51.0349"N	106°22'59.5452"W	
JANET 0780 9S Hardlines (300°FWL & 100°FSL)	N/A	9000.00	399.60	538.00	2753319.39	1468199.90	40°36'54.7682"N	106°23'18.7798"W	

Location Information					
Facility Name	Grid East (US ft)	Grid North (US ft)	Latitude	Longitude	
SEC.04-T07N-R80W	2752737.421	1467805.737	40°36'50.8157"N	106°23'26.2746"W	
Slot	Local N (ft)	Local E (ft)	Grid East (US ft)	Grid North (US ft)	Latitude
SLOT#03 JANET 0780 9S-4H9 (378°FNL & 879°FEL, SEC.04)	0.40	40.00	2752777.420	1467805.740	40°36'50.8197"N
(8099)GL+25.5KB = 8124.5(RKB) to Ground level (At Slot: SLO7#03 JANET 0780 9S-4H9 (378°FNL & 879°FEL, SEC.04))					8124.6ft
Mean Sea Level to Ground level (At Slot: SLO7#03 JANET 0780 9S-4H9 (378°FNL & 879°FEL, SEC.04))					0ft
(8099)GL+25.5KB = 8124.5(RKB) to Mean Sea Level					8124.6ft

Well Profile Data							
Design Comment	MD (ft)	Inc (°)	Az (°)	TVD (ft)	Local N (ft)	Local E (ft)	DLS (*/100ft)
Tie On	25.50	0.000	62.551	25.50	0.00	0.00	0.00
End of Tangent	500.00	0.000	62.551	500.00	0.00	0.00	0.00
Build (XS)	1327.31	16.546	62.551	1315.86	54.68	105.27	-33.85
KOP	8113.31	16.546	62.551	7820.86	945.52	1820.29	0.00
LP	9293.33	86.758	179.972	8606.00	274.86	2016.13	8.00
WP1	11281.08	86.758	179.972	8718.40	-1709.71	2017.10	0.00
3D Arc (J)	11581.78	92.770	180.156	8719.64	-2010.28	2016.76	2.00
WP2	13687.23	92.770	180.156	8617.90	-4113.26	2011.04	0.00
3D Arc (J)	14030.46	99.634	180.145	8580.84	-4454.28	2010.14	2.00
WP3	15828.62	99.634	180.145	8279.90	-6227.07	2005.66	0.00
3D Arc (J)	15938.35	101.829	180.143	8259.47	-6334.87	2005.39	2.00
WP4	17905.13	101.829	180.143	7856.30	-8259.87	2000.57	0.00
3D Arc (J)	18302.31	93.885	180.145	7802.05	-8653.01	1999.58	2.00
BHL	20044.50	93.885	180.145	7684.00	-10391.19	1995.18	0.00

Survey Program					
Start MD (ft)	End MD (ft)	Tool	Model	Log Name/Comment	Wellbore
25.50	4965.31	OWSG MWD rev2	OWSG MWD rev2 - Standard		JANET 0780 9S-4H9 PWB
4965.31	20277.03	BH AutoTrak Curve/xpress (2019)	BH AutoTrak Curve/xpress (2019) (HRGM, Short spacing)		JANET 0780 9S-4H9 PWB



HQGM2024v1.0 (1900.0 to 2025.0) Dip: 66.42° Field: 51443.1 nT
 Magnetic North is 8.48 degrees East of True North (at 12/31/2024)
 To correct azimuth from Magnetic to True add 8.48 degrees



Planned Wellpath Report

JANET 0780 9S-4H9 (REV-B.0) PWP

Page 1 of 8



REFERENCE WELLPATH IDENTIFICATION

Operator	FULCRUM ENERGY OPERATING	Well	JANET 0780 9S-4H9
Field	JACKSON COUNTY (NAD83/TN)	API	05-057-06643
Facility	SEC.04-T07N-R80W	Wellbore	JANET 0780 9S-4H9 PWB
Slot	SLOT#03 JANET 0780 9S-4H9 (378'FNL & 879'FEL,SEC.04)		

REPORT SETUP INFORMATION

Projection System	NAD83 / Lambert Colorado SP, Northern Zone (501), US feet	Software System	WellArchitect® 6.0
North Reference	True	User	Martsam01
Scale	0.999977	Report Generated	3/12/2025 at 2:27:30 PM
Convergence at slot	0.58° West	Database	WA_Denver

WELLPATH LOCATION

	Local coordinates		Grid coordinates		Geographic coordinates	
	North[ft]	East[ft]	Easting[US ft]	Northing[US ft]	Latitude	Longitude
Slot Location	0.40	40.00	2752777.42	1467805.74	40.6141166°	-106.3904878°
Facility Reference Pt			2752737.42	1467805.74	40.6141155°	-106.3906318°
Field Reference Pt			2986049.83	1344849.24	40.2800000°	-105.5500000°

WELLPATH DATUM

Calculation method	Minimum curvature	(8099'GL+25.5'KB = 8124.5'RKB) (RKB) to Facility Vertical Datum	8124.50ft
Horizontal Reference Pt	Slot	(8099'GL+25.5'KB = 8124.5'RKB) (RKB) to Mean Sea Level	8124.50ft
Vertical Reference Pt	(8099'GL+25.5'KB = 8124.5'RKB) (RKB)	(8099'GL+25.5'KB = 8124.5'RKB) (RKB) to Ground Level at Slot (SLOT#03 JANET 0780 9S-4H9 (378'FNL & 879'FEL,SEC.04))	8124.50ft
MD Reference Pt	(8099'GL+25.5'KB = 8124.5'RKB) (RKB)	Section Origin	N 0.00, E 0.00 ft
Field Vertical Reference	Mean Sea Level	Section Azimuth	169.13°



Planned Wellpath Report

JANET 0780 9S-4H9 (REV-B.0) PWP

Page 2 of 8



REFERENCE WELLPATH IDENTIFICATION

Operator	FULCRUM ENERGY OPERATING	Well	JANET 0780 9S-4H9
Field	JACKSON COUNTY (NAD83/TN)	API	05-057-06643
Facility	SEC.04-T07N-R80W	Wellbore	JANET 0780 9S-4H9 PWB
Slot	SLOT#03 JANET 0780 9S-4H9 (378'FNL & 879'FEL,SEC.04)		

WELLPATH DATA (214 stations) † = interpolated, ‡ = extrapolated station

MD [ft]	Inclination [°]	Azimuth [°]	TVD [ft]	Vert Sect [ft]	North [ft]	East [ft]	Grid East [US ft]	Grid North [US ft]	Latitude	Longitude	DLS [°/100ft]	Comments
0.00†	0.000	62.551	0.00	0.00	0.00	0.00	2752777.42	1467805.74	40.6141166	-106.3904878	0.00	
25.50	0.000	62.551	25.50	0.00	0.00	0.00	2752777.42	1467805.74	40.6141166	-106.3904878	0.00	Tie On
100.00†	0.000	62.551	100.00	0.00	0.00	0.00	2752777.42	1467805.74	40.6141166	-106.3904878	0.00	
200.00†	0.000	62.551	200.00	0.00	0.00	0.00	2752777.42	1467805.74	40.6141166	-106.3904878	0.00	
300.00†	0.000	62.551	300.00	0.00	0.00	0.00	2752777.42	1467805.74	40.6141166	-106.3904878	0.00	
400.00†	0.000	62.551	400.00	0.00	0.00	0.00	2752777.42	1467805.74	40.6141166	-106.3904878	0.00	
500.00	0.000	62.551	500.00	0.00	0.00	0.00	2752777.42	1467805.74	40.6141166	-106.3904878	0.00	End of Tangent
600.00†	2.000	62.551	599.98	-0.50	0.80	1.55	2752778.98	1467806.53	40.6141188	-106.3904822	2.00	
700.00†	4.000	62.551	699.84	-1.99	3.22	6.19	2752783.64	1467808.89	40.6141254	-106.3904655	2.00	
800.00†	6.000	62.551	799.45	-4.48	7.23	13.93	2752791.42	1467812.83	40.6141364	-106.3904376	2.00	
900.00†	8.000	62.551	898.70	-7.96	12.85	24.74	2752802.29	1467818.34	40.6141519	-106.3903987	2.00	
1000.00†	10.000	62.551	997.47	-12.42	20.06	38.62	2752816.24	1467825.41	40.6141716	-106.3903487	2.00	
1100.00†	12.000	62.551	1095.62	-17.86	28.86	55.55	2752833.26	1467834.04	40.6141958	-106.3902877	2.00	
1200.00†	14.000	62.551	1193.06	-24.28	39.23	75.52	2752853.32	1467844.20	40.6142242	-106.3902158	2.00	
1300.00†	16.000	62.551	1289.64	-31.67	51.16	98.48	2752876.41	1467855.90	40.6142570	-106.3901330	2.00	
1327.31	16.546	62.551	1315.86	-33.85	54.68	105.27	2752883.24	1467859.36	40.6142667	-106.3901086	2.00	Build (XS)
1400.00†	16.546	62.551	1385.54	-39.76	64.23	123.65	2752901.70	1467868.72	40.6142929	-106.3900424	0.00	
1500.00†	16.546	62.551	1481.40	-47.89	77.35	148.92	2752927.10	1467881.59	40.6143289	-106.3899514	0.00	
1600.00†	16.546	62.551	1577.26	-56.01	90.48	174.19	2752952.51	1467894.47	40.6143649	-106.3898604	0.00	
1700.00†	16.546	62.551	1673.12	-64.14	103.61	199.46	2752977.91	1467907.34	40.6144010	-106.3897693	0.00	
1800.00†	16.546	62.551	1768.97	-72.27	116.74	224.74	2753003.31	1467920.21	40.6144370	-106.3896783	0.00	
1900.00†	16.546	62.551	1864.83	-80.39	129.86	250.01	2753028.71	1467933.08	40.6144730	-106.3895873	0.00	
2000.00†	16.546	62.551	1960.69	-88.52	142.99	275.28	2753054.12	1467945.96	40.6145091	-106.3894962	0.00	
2100.00†	16.546	62.551	2056.55	-96.65	156.12	300.55	2753079.52	1467958.83	40.6145451	-106.3894052	0.00	
2200.00†	16.546	62.551	2152.41	-104.77	169.25	325.83	2753104.92	1467971.70	40.6145811	-106.3893142	0.00	
2300.00†	16.546	62.551	2248.27	-112.90	182.37	351.10	2753130.33	1467984.57	40.6146172	-106.3892232	0.00	
2400.00†	16.546	62.551	2344.13	-121.02	195.50	376.37	2753155.73	1467997.45	40.6146532	-106.3891321	0.00	
2500.00†	16.546	62.551	2439.99	-129.15	208.63	401.65	2753181.13	1468010.32	40.6146892	-106.3890411	0.00	
2600.00†	16.546	62.551	2535.85	-137.28	221.76	426.92	2753206.53	1468023.19	40.6147253	-106.3889501	0.00	
2700.00†	16.546	62.551	2631.71	-145.40	234.88	452.19	2753231.94	1468036.07	40.6147613	-106.3888590	0.00	
2800.00†	16.546	62.551	2727.56	-153.53	248.01	477.46	2753257.34	1468048.94	40.6147973	-106.3887680	0.00	
2900.00†	16.546	62.551	2823.42	-161.66	261.14	502.74	2753282.74	1468061.81	40.6148333	-106.3886770	0.00	
3000.00†	16.546	62.551	2919.28	-169.78	274.27	528.01	2753308.14	1468074.68	40.6148694	-106.3885860	0.00	
3100.00†	16.546	62.551	3015.14	-177.91	287.39	553.28	2753333.55	1468087.56	40.6149054	-106.3884949	0.00	
3200.00†	16.546	62.551	3111.00	-186.04	300.52	578.56	2753358.95	1468100.43	40.6149414	-106.3884039	0.00	
3300.00†	16.546	62.551	3206.86	-194.16	313.65	603.83	2753384.35	1468113.30	40.6149775	-106.3883129	0.00	
3400.00†	16.546	62.551	3302.72	-202.29	326.78	629.10	2753409.75	1468126.18	40.6150135	-106.3882218	0.00	
3500.00†	16.546	62.551	3398.58	-210.42	339.91	654.37	2753435.16	1468139.05	40.6150495	-106.3881308	0.00	
3600.00†	16.546	62.551	3494.44	-218.54	353.03	679.65	2753460.56	1468151.92	40.6150856	-106.3880398	0.00	
3700.00†	16.546	62.551	3590.30	-226.67	366.16	704.92	2753485.96	1468164.79	40.6151216	-106.3879487	0.00	
3800.00†	16.546	62.551	3686.16	-234.80	379.29	730.19	2753511.37	1468177.67	40.6151576	-106.3878577	0.00	
3900.00†	16.546	62.551	3782.01	-242.92	392.42	755.46	2753536.77	1468190.54	40.6151937	-106.3877667	0.00	
4000.00†	16.546	62.551	3877.87	-251.05	405.54	780.74	2753562.17	1468203.41	40.6152297	-106.3876756	0.00	
4100.00†	16.546	62.551	3973.73	-259.18	418.67	806.01	2753587.57	1468216.29	40.6152657	-106.3875846	0.00	
4200.00†	16.546	62.551	4069.59	-267.30	431.80	831.28	2753612.98	1468229.16	40.6153017	-106.3874936	0.00	



Planned Wellpath Report

JANET 0780 9S-4H9 (REV-B.0) PWP

Page 3 of 8



REFERENCE WELLPATH IDENTIFICATION

Operator	FULCRUM ENERGY OPERATING	Well	JANET 0780 9S-4H9
Field	JACKSON COUNTY (NAD83/TN)	API	05-057-06643
Facility	SEC.04-T07N-R80W	Wellbore	JANET 0780 9S-4H9 PWB
Slot	SLOT#03 JANET 0780 9S-4H9 (378'FNL & 879'FEL,SEC.04)		

WELLPATH DATA (214 stations) † = interpolated, ‡ = extrapolated station

MD [ft]	Inclination [°]	Azimuth [°]	TVD [ft]	Vert Sect [ft]	North [ft]	East [ft]	Grid East [US ft]	Grid North [US ft]	Latitude	Longitude	DLS ["/100ft]	Comments
4300.00†	16.546	62.551	4165.45	-275.43	444.93	856.56	2753638.38	1468242.03	40.6153378	-106.3874026	0.00	
4400.00†	16.546	62.551	4261.31	-283.56	458.05	881.83	2753663.78	1468254.90	40.6153738	-106.3873115	0.00	
4500.00†	16.546	62.551	4357.17	-291.68	471.18	907.10	2753689.18	1468267.78	40.6154098	-106.3872205	0.00	
4600.00†	16.546	62.551	4453.03	-299.81	484.31	932.37	2753714.59	1468280.65	40.6154459	-106.3871295	0.00	
4700.00†	16.546	62.551	4548.89	-307.94	497.44	957.65	2753739.99	1468293.52	40.6154819	-106.3870384	0.00	
4800.00†	16.546	62.551	4644.75	-316.06	510.56	982.92	2753765.39	1468306.40	40.6155179	-106.3869474	0.00	
4900.00†	16.546	62.551	4740.60	-324.19	523.69	1008.19	2753790.80	1468319.27	40.6155540	-106.3868564	0.00	
5000.00†	16.546	62.551	4836.46	-332.32	536.82	1033.47	2753816.20	1468332.14	40.6155900	-106.3867653	0.00	
5100.00†	16.546	62.551	4932.32	-340.44	549.95	1058.74	2753841.60	1468345.01	40.6156260	-106.3866743	0.00	
5200.00†	16.546	62.551	5028.18	-348.57	563.07	1084.01	2753867.00	1468357.89	40.6156620	-106.3865833	0.00	
5300.00†	16.546	62.551	5124.04	-356.70	576.20	1109.28	2753892.41	1468370.76	40.6156981	-106.3864922	0.00	
5400.00†	16.546	62.551	5219.90	-364.82	589.33	1134.56	2753917.81	1468383.63	40.6157341	-106.3864012	0.00	
5500.00†	16.546	62.551	5315.76	-372.95	602.46	1159.83	2753943.21	1468396.50	40.6157701	-106.3863102	0.00	
5600.00†	16.546	62.551	5411.62	-381.08	615.58	1185.10	2753968.61	1468409.38	40.6158062	-106.3862191	0.00	
5700.00†	16.546	62.551	5507.48	-389.20	628.71	1210.37	2753994.02	1468422.25	40.6158422	-106.3861281	0.00	
5800.00†	16.546	62.551	5603.34	-397.33	641.84	1235.65	2754019.42	1468435.12	40.6158782	-106.3860371	0.00	
5900.00†	16.546	62.551	5699.19	-405.46	654.97	1260.92	2754044.82	1468448.00	40.6159142	-106.3859460	0.00	
6000.00†	16.546	62.551	5795.05	-413.58	668.10	1286.19	2754070.22	1468460.87	40.6159503	-106.3858550	0.00	
6100.00†	16.546	62.551	5890.91	-421.71	681.22	1311.47	2754095.63	1468473.74	40.6159863	-106.3857640	0.00	
6200.00†	16.546	62.551	5986.77	-429.84	694.35	1336.74	2754121.03	1468486.61	40.6160223	-106.3856729	0.00	
6300.00†	16.546	62.551	6082.63	-437.96	707.48	1362.01	2754146.43	1468499.49	40.6160584	-106.3855819	0.00	
6400.00†	16.546	62.551	6178.49	-446.09	720.61	1387.28	2754171.84	1468512.36	40.6160944	-106.3854909	0.00	
6500.00†	16.546	62.551	6274.35	-454.22	733.73	1412.56	2754197.24	1468525.23	40.6161304	-106.3853998	0.00	
6600.00†	16.546	62.551	6370.21	-462.34	746.86	1437.83	2754222.64	1468538.11	40.6161664	-106.3853088	0.00	
6700.00†	16.546	62.551	6466.07	-470.47	759.99	1463.10	2754248.04	1468550.98	40.6162025	-106.3852178	0.00	
6800.00†	16.546	62.551	6561.93	-478.60	773.12	1488.38	2754273.45	1468563.85	40.6162385	-106.3851267	0.00	
6900.00†	16.546	62.551	6657.79	-486.72	786.24	1513.65	2754298.85	1468576.72	40.6162745	-106.3850357	0.00	
7000.00†	16.546	62.551	6753.64	-494.85	799.37	1538.92	2754324.25	1468589.60	40.6163106	-106.3849447	0.00	
7100.00†	16.546	62.551	6849.50	-502.98	812.50	1564.19	2754349.65	1468602.47	40.6163466	-106.3848536	0.00	
7200.00†	16.546	62.551	6945.36	-511.10	825.63	1589.47	2754375.06	1468615.34	40.6163826	-106.3847626	0.00	
7300.00†	16.546	62.551	7041.22	-519.23	838.75	1614.74	2754400.46	1468628.22	40.6164186	-106.3846716	0.00	
7400.00†	16.546	62.551	7137.08	-527.36	851.88	1640.01	2754425.86	1468641.09	40.6164547	-106.3845805	0.00	
7500.00†	16.546	62.551	7232.94	-535.48	865.01	1665.28	2754451.27	1468653.96	40.6164907	-106.3844895	0.00	
7600.00†	16.546	62.551	7328.80	-543.61	878.14	1690.56	2754476.67	1468666.83	40.6165267	-106.3843985	0.00	
7700.00†	16.546	62.551	7424.66	-551.74	891.26	1715.83	2754502.07	1468679.71	40.6165628	-106.3843074	0.00	
7800.00†	16.546	62.551	7520.52	-559.86	904.39	1741.10	2754527.47	1468692.58	40.6165988	-106.3842164	0.00	
7900.00†	16.546	62.551	7616.38	-567.99	917.52	1766.38	2754552.88	1468705.45	40.6166348	-106.3841254	0.00	
8000.00†	16.546	62.551	7712.23	-576.12	930.65	1791.65	2754578.28	1468718.33	40.6166708	-106.3840343	0.00	
8100.00†	16.546	62.551	7808.09	-584.24	943.77	1816.92	2754603.68	1468731.20	40.6167069	-106.3839433	0.00	
8113.31	16.546	62.551	7820.86	-585.32	945.52	1820.29	2754607.06	1468732.91	40.6167117	-106.3839312	0.00	KOP
8200.00†	14.685	87.597	7904.43	-587.23	951.68	1842.25	2754629.08	1468738.85	40.6167286	-106.3838521	8.00	
8300.00†	16.293	117.289	8000.95	-576.68	945.77	1867.42	2754654.19	1468732.69	40.6167123	-106.3837614	8.00	
8400.00†	20.987	137.813	8095.78	-552.68	926.04	1891.95	2754678.53	1468712.71	40.6166582	-106.3836731	8.00	
8500.00†	27.213	150.234	8187.08	-515.69	892.87	1915.36	2754701.61	1468679.31	40.6165671	-106.3835887	8.00	
8600.00†	34.141	158.124	8273.06	-466.43	846.90	1937.21	2754722.99	1468633.13	40.6164410	-106.3835101	8.00	



Planned Wellpath Report

JANET 0780 9S-4H9 (REV-B.0) PWP

Page 4 of 8



REFERENCE WELLPATH IDENTIFICATION

Operator	FULCRUM ENERGY OPERATING	Well	JANET 0780 9S-4H9
Field	JACKSON COUNTY (NAD83/TN)	API	05-057-06643
Facility	SEC.04-T07N-R80W	Wellbore	JANET 0780 9S-4H9 PWB
Slot	SLOT#03 JANET 0780 9S-4H9 (378'FNL & 879'FEL,SEC.04)		

WELLPATH DATA (214 stations) † = interpolated, ‡ = extrapolated station

MD [ft]	Inclination [°]	Azimuth [°]	TVD [ft]	Vert Sect [ft]	North [ft]	East [ft]	Grid East [US ft]	Grid North [US ft]	Latitude	Longitude	DLS [°/100ft]	Comments
8700.00†	41.419	163.568	8352.07	-405.86	789.04	1957.05	2754742.25	1468575.07	40.6162821	-106.3834386	8.00	
8800.00†	48.889	167.621	8422.55	-335.16	720.41	1974.51	2754759.02	1468506.26	40.6160937	-106.3833757	8.00	
8900.00†	56.471	170.837	8483.15	-255.72	642.34	1989.25	2754772.97	1468428.05	40.6158794	-106.3833227	8.00	
9000.00†	64.122	173.529	8532.67	-169.06	556.35	2000.98	2754783.83	1468341.95	40.6156434	-106.3832805	8.00	
9100.00†	71.818	175.891	8570.15	-76.88	464.12	2009.46	2754791.39	1468249.64	40.6153903	-106.3832499	8.00	
9200.00†	79.539	178.052	8594.87	19.02	367.44	2014.55	2754795.51	1468152.92	40.6151249	-106.3832316	8.00	
9293.33	86.758	179.972	8606.00 ¹	110.24	274.86	2016.13	2754796.16	1468060.33	40.6148708	-106.3832259	8.00	LP
9300.00†	86.758	179.972	8606.38	116.78	268.19	2016.14	2754796.10	1468053.67	40.6148525	-106.3832259	0.00	
9400.00†	86.758	179.972	8612.03	214.84	168.35	2016.18	2754795.14	1467953.84	40.6145785	-106.3832258	0.00	
9500.00†	86.758	179.972	8617.69	312.90	68.51	2016.23	2754794.19	1467854.00	40.6143044	-106.3832256	0.00	
9600.00†	86.758	179.972	8623.34	410.96	-31.33	2016.28	2754793.23	1467754.17	40.6140304	-106.3832255	0.00	
9700.00†	86.758	179.972	8629.00	509.02	-131.17	2016.33	2754792.28	1467654.34	40.6137563	-106.3832254	0.00	
9800.00†	86.758	179.972	8634.65	607.07	-231.01	2016.38	2754791.33	1467554.50	40.6134823	-106.3832252	0.00	
9900.00†	86.758	179.972	8640.31	705.13	-330.85	2016.43	2754790.37	1467454.67	40.6132083	-106.3832251	0.00	
10000.00†	86.758	179.972	8645.96	803.19	-430.69	2016.48	2754789.42	1467354.84	40.6129342	-106.3832249	0.00	
10100.00†	86.758	179.972	8651.61	901.25	-530.53	2016.53	2754788.47	1467255.00	40.6126602	-106.3832248	0.00	
10200.00†	86.758	179.972	8657.27	999.31	-630.37	2016.57	2754787.51	1467155.17	40.6123861	-106.3832246	0.00	
10300.00†	86.758	179.972	8662.92	1097.37	-730.21	2016.62	2754786.56	1467055.34	40.6121121	-106.3832245	0.00	
10400.00†	86.758	179.972	8668.58	1195.42	-830.05	2016.67	2754785.60	1466955.51	40.6118380	-106.3832243	0.00	
10500.00†	86.758	179.972	8674.23	1293.48	-929.89	2016.72	2754784.65	1466855.67	40.6115640	-106.3832242	0.00	
10600.00†	86.758	179.972	8679.89	1391.54	-1029.73	2016.77	2754783.70	1466755.84	40.6112900	-106.3832240	0.00	
10700.00†	86.758	179.972	8685.54	1489.60	-1129.57	2016.82	2754782.74	1466656.01	40.6110159	-106.3832239	0.00	
10800.00†	86.758	179.972	8691.20	1587.66	-1229.41	2016.87	2754781.79	1466556.17	40.6107419	-106.3832237	0.00	
10900.00†	86.758	179.972	8696.85	1685.71	-1329.25	2016.92	2754780.83	1466456.34	40.6104678	-106.3832236	0.00	
11000.00†	86.758	179.972	8702.51	1783.77	-1429.09	2016.96	2754779.88	1466356.51	40.6101938	-106.3832235	0.00	
11100.00†	86.758	179.972	8708.16	1881.83	-1528.93	2017.01	2754778.93	1466256.68	40.6099198	-106.3832233	0.00	
11200.00†	86.758	179.972	8713.82	1979.89	-1628.77	2017.06	2754777.97	1466156.84	40.6096457	-106.3832232	0.00	
11281.08	86.758	179.972	8718.40 ²	2059.39	-1709.71	2017.10	2754777.20	1466075.90	40.6094235	-106.3832230	0.00	WP1
11300.00†	87.137	179.984	8719.41	2077.95	-1728.61	2017.11	2754777.02	1466057.01	40.6093717	-106.3832230	2.00	
11400.00†	89.136	180.045	8722.66	2176.09	-1828.55	2017.08	2754775.99	1465957.07	40.6090973	-106.3832231	2.00	
11500.00†	91.135	180.106	8722.42	2274.27	-1928.55	2016.95	2754774.85	1465857.09	40.6088229	-106.3832236	2.00	
11581.78	92.770	180.156	8719.64	2354.50	-2010.28	2016.76	2754773.85	1465775.36	40.6085985	-106.3832243	2.00	End of 3D Arc (J)
11600.00†	92.770	180.156	8718.76	2372.36	-2028.47	2016.72	2754773.61	1465757.17	40.6085486	-106.3832245	0.00	
11700.00†	92.770	180.156	8713.93	2470.40	-2128.36	2016.44	2754772.34	1465657.30	40.6082744	-106.3832255	0.00	
11800.00†	92.770	180.156	8709.09	2568.44	-2228.24	2016.17	2754771.06	1465557.42	40.6080003	-106.3832265	0.00	
11900.00†	92.770	180.156	8704.26	2666.48	-2328.12	2015.90	2754769.79	1465457.55	40.6077261	-106.3832276	0.00	
12000.00†	92.770	180.156	8699.43	2764.52	-2428.01	2015.63	2754768.51	1465357.68	40.6074520	-106.3832286	0.00	
12100.00†	92.770	180.156	8694.60	2862.56	-2527.89	2015.35	2754767.24	1465257.81	40.6071778	-106.3832296	0.00	
12200.00†	92.770	180.156	8689.76	2960.60	-2627.77	2015.08	2754765.96	1465157.93	40.6069037	-106.3832306	0.00	
12300.00†	92.770	180.156	8684.93	3058.64	-2727.65	2014.81	2754764.69	1465058.06	40.6066295	-106.3832316	0.00	
12400.00†	92.770	180.156	8680.10	3156.68	-2827.54	2014.54	2754763.41	1464958.19	40.6063553	-106.3832326	0.00	
12500.00†	92.770	180.156	8675.27	3254.72	-2927.42	2014.27	2754762.14	1464858.31	40.6060812	-106.3832336	0.00	
12600.00†	92.770	180.156	8670.44	3352.76	-3027.30	2013.99	2754760.86	1464758.44	40.6058070	-106.3832346	0.00	
12700.00†	92.770	180.156	8665.60	3450.80	-3127.18	2013.72	2754759.59	1464658.57	40.6055329	-106.3832356	0.00	
12800.00†	92.770	180.156	8660.77	3548.84	-3227.07	2013.45	2754758.31	1464558.70	40.6052587	-106.3832366	0.00	



Planned Wellpath Report

JANET 0780 9S-4H9 (REV-B.0) PWP

Page 5 of 8



REFERENCE WELLPATH IDENTIFICATION

Operator	FULCRUM ENERGY OPERATING	Well	JANET 0780 9S-4H9
Field	JACKSON COUNTY (NAD83/TN)	API	05-057-06643
Facility	SEC.04-T07N-R80W	Wellbore	JANET 0780 9S-4H9 PWB
Slot	SLOT#03 JANET 0780 9S-4H9 (378'FNL & 879'FEL,SEC.04)		

WELLPATH DATA (214 stations) † = interpolated, ‡ = extrapolated station

MD [ft]	Inclination [°]	Azimuth [°]	TVD [ft]	Vert Sect [ft]	North [ft]	East [ft]	Grid East [US ft]	Grid North [US ft]	Latitude	Longitude	DLS [°/100ft]	Comments
12900.00†	92.770	180.156	8655.94	3646.88	-3326.95	2013.18	2754757.04	1464458.82	40.6049845	-106.3832376	0.00	
13000.00†	92.770	180.156	8651.11	3744.92	-3426.83	2012.91	2754755.76	1464358.95	40.6047104	-106.3832387	0.00	
13100.00†	92.770	180.156	8646.28	3842.96	-3526.72	2012.63	2754754.49	1464259.08	40.6044362	-106.3832397	0.00	
13200.00†	92.770	180.156	8641.44	3941.00	-3626.60	2012.36	2754753.21	1464159.21	40.6041621	-106.3832407	0.00	
13300.00†	92.770	180.156	8636.61	4039.04	-3726.48	2012.09	2754751.94	1464059.33	40.6038879	-106.3832417	0.00	
13400.00†	92.770	180.156	8631.78	4137.08	-3826.36	2011.82	2754750.66	1463959.46	40.6036137	-106.3832427	0.00	
13500.00†	92.770	180.156	8626.95	4235.12	-3926.25	2011.55	2754749.39	1463859.59	40.6033396	-106.3832437	0.00	
13600.00†	92.770	180.156	8622.11	4333.16	-4026.13	2011.27	2754748.11	1463759.72	40.6030654	-106.3832447	0.00	
13687.23	92.770	180.156	8617.90 ³	4418.67	-4113.26	2011.04	2754747.00	1463672.60	40.6028263	-106.3832456	0.00	WP2
13700.00†	93.025	180.156	8617.25	4431.20	-4126.01	2011.00	2754746.84	1463659.85	40.6027913	-106.3832457	2.00	
13800.00†	95.025	180.152	8610.24	4529.10	-4225.76	2010.73	2754745.57	1463560.11	40.6025175	-106.3832467	2.00	
13900.00†	97.025	180.149	8599.74	4626.71	-4325.20	2010.47	2754744.31	1463460.68	40.6022445	-106.3832477	2.00	
14000.00†	99.025	180.146	8585.78	4723.90	-4424.22	2010.22	2754743.06	1463361.67	40.6019728	-106.3832486	2.00	
14030.46	99.634	180.145	8580.84	4753.41	-4454.28	2010.14	2754742.68	1463331.61	40.6018902	-106.3832489	2.00	End of 3D Arc (J)
14100.00†	99.634	180.145	8569.20	4820.70	-4522.83	2009.97	2754741.82	1463263.06	40.6017021	-106.3832496	0.00	
14200.00†	99.634	180.145	8552.47	4917.48	-4621.42	2009.72	2754740.58	1463164.49	40.6014315	-106.3832505	0.00	
14300.00†	99.634	180.145	8535.73	5014.25	-4720.01	2009.47	2754739.34	1463065.91	40.6011609	-106.3832514	0.00	
14400.00†	99.634	180.145	8519.00	5111.02	-4818.60	2009.22	2754738.10	1462967.33	40.6008903	-106.3832523	0.00	
14500.00†	99.634	180.145	8502.26	5207.80	-4917.19	2008.97	2754736.86	1462868.75	40.6006196	-106.3832533	0.00	
14600.00†	99.634	180.145	8485.52	5304.57	-5015.78	2008.72	2754735.62	1462770.17	40.6003490	-106.3832542	0.00	
14700.00†	99.634	180.145	8468.79	5401.35	-5114.37	2008.47	2754734.38	1462671.59	40.6000784	-106.3832551	0.00	
14800.00†	99.634	180.145	8452.05	5498.12	-5212.96	2008.22	2754733.15	1462573.01	40.5998078	-106.3832560	0.00	
14900.00†	99.634	180.145	8435.31	5594.89	-5311.55	2007.97	2754731.91	1462474.43	40.5995372	-106.3832570	0.00	
15000.00†	99.634	180.145	8418.58	5691.67	-5410.14	2007.73	2754730.67	1462375.85	40.5992666	-106.3832579	0.00	
15100.00†	99.634	180.145	8401.84	5788.44	-5508.73	2007.48	2754729.43	1462277.27	40.5989960	-106.3832588	0.00	
15200.00†	99.634	180.145	8385.11	5885.21	-5607.31	2007.23	2754728.19	1462178.69	40.5987254	-106.3832597	0.00	
15300.00†	99.634	180.145	8368.37	5981.99	-5705.90	2006.98	2754726.95	1462080.11	40.5984548	-106.3832607	0.00	
15400.00†	99.634	180.145	8351.63	6078.76	-5804.49	2006.73	2754725.71	1461981.53	40.5981842	-106.3832616	0.00	
15500.00†	99.634	180.145	8334.90	6175.54	-5903.08	2006.48	2754724.47	1461882.95	40.5979136	-106.3832625	0.00	
15600.00†	99.634	180.145	8318.16	6272.31	-6001.67	2006.23	2754723.23	1461784.38	40.5976429	-106.3832634	0.00	
15700.00†	99.634	180.145	8301.43	6369.08	-6100.26	2005.98	2754721.99	1461685.80	40.5973723	-106.3832644	0.00	
15800.00†	99.634	180.145	8284.69	6465.86	-6198.85	2005.73	2754720.75	1461587.22	40.5971017	-106.3832653	0.00	
15828.62	99.634	180.145	8279.90 ⁴	6493.56	-6227.07	2005.66	2754720.40	1461559.00	40.5970243	-106.3832656	0.00	WP3
15900.00†	101.062	180.144	8267.08	6562.48	-6297.28	2005.49	2754719.52	1461488.79	40.5968315	-106.3832662	2.00	
15938.35	101.829	180.143	8259.47	6599.37	-6334.87	2005.39	2754719.05	1461451.21	40.5967284	-106.3832666	2.00	End of 3D Arc (J)
16000.00†	101.829	180.143	8246.83	6658.60	-6395.21	2005.24	2754718.29	1461390.88	40.5965628	-106.3832671	0.00	
16100.00†	101.829	180.143	8226.33	6754.68	-6493.09	2005.00	2754717.06	1461293.01	40.5962941	-106.3832680	0.00	
16200.00†	101.829	180.143	8205.83	6850.75	-6590.96	2004.75	2754715.83	1461195.14	40.5960255	-106.3832690	0.00	
16300.00†	101.829	180.143	8185.33	6946.82	-6688.84	2004.51	2754714.61	1461097.28	40.5957568	-106.3832699	0.00	
16400.00†	101.829	180.143	8164.84	7042.90	-6786.72	2004.26	2754713.38	1460999.41	40.5954882	-106.3832708	0.00	
16500.00†	101.829	180.143	8144.34	7138.97	-6884.59	2004.02	2754712.15	1460901.54	40.5952195	-106.3832717	0.00	
16600.00†	101.829	180.143	8123.84	7235.05	-6982.47	2003.77	2754710.92	1460803.68	40.5949508	-106.3832726	0.00	
16700.00†	101.829	180.143	8103.34	7331.12	-7080.34	2003.53	2754709.70	1460705.81	40.5946822	-106.3832735	0.00	
16800.00†	101.829	180.143	8082.84	7427.19	-7178.22	2003.28	2754708.47	1460607.95	40.5944135	-106.3832744	0.00	
16900.00†	101.829	180.143	8062.34	7523.27	-7276.10	2003.04	2754707.24	1460510.08	40.5941449	-106.3832753	0.00	



Planned Wellpath Report

JANET 0780 9S-4H9 (REV-B.0) PWP

Page 6 of 8



REFERENCE WELLPATH IDENTIFICATION

Operator	FULCRUM ENERGY OPERATING	Well	JANET 0780 9S-4H9
Field	JACKSON COUNTY (NAD83/TN)	API	05-057-06643
Facility	SEC.04-T07N-R80W	Wellbore	JANET 0780 9S-4H9 PWB
Slot	SLOT#03 JANET 0780 9S-4H9 (378'FNL & 879'FEL,SEC.04)		

WELLPATH DATA (214 stations) † = interpolated, ‡ = extrapolated station

MD [ft]	Inclination [°]	Azimuth [°]	TVD [ft]	Vert Sect [ft]	North [ft]	East [ft]	Grid East [US ft]	Grid North [US ft]	Latitude	Longitude	DLS [°/100ft]	Comments
17000.00†	101.829	180.143	8041.84	7619.34	-7373.97	2002.79	2754706.01	1460412.21	40.5938762	-106.3832762	0.00	
17100.00†	101.829	180.143	8021.34	7715.42	-7471.85	2002.55	2754704.78	1460314.35	40.5936076	-106.3832771	0.00	
17200.00†	101.829	180.143	8000.84	7811.49	-7569.72	2002.30	2754703.56	1460216.48	40.5933389	-106.3832781	0.00	
17300.00†	101.829	180.143	7980.34	7907.57	-7667.60	2002.06	2754702.33	1460118.61	40.5930703	-106.3832790	0.00	
17400.00†	101.829	180.143	7959.85	8003.64	-7765.48	2001.81	2754701.10	1460020.75	40.5928016	-106.3832799	0.00	
17500.00†	101.829	180.143	7939.35	8099.71	-7863.35	2001.57	2754699.87	1459922.88	40.5925330	-106.3832808	0.00	
17600.00†	101.829	180.143	7918.85	8195.79	-7961.23	2001.32	2754698.65	1459825.02	40.5922643	-106.3832817	0.00	
17700.00†	101.829	180.143	7898.35	8291.86	-8059.10	2001.08	2754697.42	1459727.15	40.5919957	-106.3832826	0.00	
17800.00†	101.829	180.143	7877.85	8387.94	-8156.98	2000.83	2754696.19	1459629.28	40.5917270	-106.3832835	0.00	
17900.00†	101.829	180.143	7857.35	8484.01	-8254.86	2000.59	2754694.96	1459531.42	40.5914584	-106.3832844	0.00	
17905.13	101.829	180.143	7856.30 ⁵	8488.94	-8259.87	2000.57	2754694.90	1459526.40	40.5914446	-106.3832845	0.00	WP4
18000.00†	99.931	180.144	7838.39	8580.38	-8353.04	2000.34	2754693.73	1459433.25	40.5911889	-106.3832853	2.00	
18100.00†	97.931	180.144	7822.87	8677.35	-8451.82	2000.09	2754692.49	1459334.47	40.5909178	-106.3832863	2.00	
18200.00†	95.931	180.145	7810.80	8774.78	-8551.08	1999.84	2754691.24	1459235.22	40.5906453	-106.3832872	2.00	
18300.00†	93.931	180.145	7802.20	8872.57	-8650.71	1999.59	2754689.99	1459135.61	40.5903718	-106.3832881	2.00	
18302.31	93.885	180.145	7802.05	8874.83	-8653.01	1999.58	2754689.96	1459133.30	40.5903655	-106.3832882	2.00	End of 3D Arc (J)
18400.00†	93.885	180.145	7795.43	8970.51	-8750.48	1999.34	2754688.74	1459035.85	40.5900980	-106.3832891	0.00	
18500.00†	93.885	180.145	7788.65	9068.44	-8850.25	1999.08	2754687.48	1458936.09	40.5898241	-106.3832900	0.00	
18600.00†	93.885	180.145	7781.88	9166.37	-8950.02	1998.83	2754686.23	1458836.33	40.5895503	-106.3832910	0.00	
18700.00†	93.885	180.145	7775.10	9264.30	-9049.79	1998.58	2754684.97	1458736.57	40.5892764	-106.3832919	0.00	
18800.00†	93.885	180.145	7768.32	9362.23	-9149.56	1998.33	2754683.72	1458636.81	40.5890026	-106.3832928	0.00	
18900.00†	93.885	180.145	7761.55	9460.17	-9249.33	1998.07	2754682.46	1458537.05	40.5887287	-106.3832938	0.00	
19000.00†	93.885	180.145	7754.77	9558.10	-9349.10	1997.82	2754681.21	1458437.29	40.5884549	-106.3832947	0.00	
19100.00†	93.885	180.145	7748.00	9656.03	-9448.87	1997.57	2754679.95	1458337.53	40.5881810	-106.3832957	0.00	
19200.00†	93.885	180.145	7741.22	9753.96	-9548.64	1997.31	2754678.70	1458237.77	40.5879072	-106.3832966	0.00	
19300.00†	93.885	180.145	7734.45	9851.90	-9648.41	1997.06	2754677.44	1458138.01	40.5876333	-106.3832975	0.00	
19400.00†	93.885	180.145	7727.67	9949.83	-9748.18	1996.81	2754676.19	1458038.25	40.5873595	-106.3832985	0.00	
19500.00†	93.885	180.145	7720.89	10047.76	-9847.95	1996.55	2754674.93	1457938.49	40.5870856	-106.3832994	0.00	
19600.00†	93.885	180.145	7714.12	10145.69	-9947.72	1996.30	2754673.68	1457838.73	40.5868118	-106.3833004	0.00	
19700.00†	93.885	180.145	7707.34	10243.63	-10047.49	1996.05	2754672.42	1457738.97	40.5865379	-106.3833013	0.00	
19800.00†	93.885	180.145	7700.57	10341.56	-10147.26	1995.79	2754671.17	1457639.21	40.5862641	-106.3833022	0.00	
19900.00†	93.885	180.145	7693.79	10439.49	-10247.03	1995.54	2754669.91	1457539.45	40.5859902	-106.3833032	0.00	
20000.00†	93.885	180.145	7687.01	10537.42	-10346.80	1995.29	2754668.66	1457439.69	40.5857164	-106.3833041	0.00	
20044.50	93.885	180.145	7684.00 ⁶	10581.00	-10391.19	1995.18	2754668.10	1457395.30	40.5855945	-106.3833045	0.00	BHL

HOLE & CASING SECTIONS - Ref Wellbore: JANET 0780 9S-4H9 PWB Ref Wellpath: JANET 0780 9S-4H9 (REV-B.0) PWP

String/Diameter	Start MD [ft]	End MD [ft]	Interval [ft]	Start TVD [ft]	End TVD [ft]	Start N/S [ft]	Start E/W [ft]	End N/S [ft]	End E/W [ft]
16in Conductor	25.50	120.00	94.50	25.50	120.00	0.00	0.00	0.00	0.00
9.625in Casing Surface	25.50	4965.31	4939.81	25.50	4803.21	0.00	0.00	532.27	1024.70
5.5in Casing Production	25.50	20044.50	20019.00	25.50	7684.00	0.00	0.00	-10391.19	1995.18



Planned Wellpath Report

JANET 0780 9S-4H9 (REV-B.0) PWP

Page 7 of 8



REFERENCE WELLPATH IDENTIFICATION

Operator	FULCRUM ENERGY OPERATING	Well	JANET 0780 9S-4H9
Field	JACKSON COUNTY (NAD83/TN)	API	05-057-06643
Facility	SEC.04-T07N-R80W	Wellbore	JANET 0780 9S-4H9 PWB
Slot	SLOT#03 JANET 0780 9S-4H9 (378'FNL & 879'FEL,SEC.04)		

TARGETS

Name	MD [ft]	TVD [ft]	North [ft]	East [ft]	Grid East [US ft]	Grid North [US ft]	Latitude	Longitude	Shape
6) JANET 0780 9S-4H9 BHL Rev-2 (291'FSL & 1307'FWL,SEC.09)	20044.50	7684.00	-10391.19	1995.18	2754668.10	1457395.30	40.5855945	-106.3833045	point
JANET 0780 9S-4H9 BHL (100'FSL & 1302'FWL,SEC.09)	N/A	7856.00	-10582.88	1988.82	2754659.82	1457203.69	40.5850684	-106.3833275	point
5) JANET 0780 9S-4H9 WP4	17905.13	7856.30	-8259.87	2000.57	2754694.90	1459526.40	40.5914446	-106.3832845	point
4) JANET 0780 9S-4H9 WP3	15828.62	8279.90	-6227.07	2005.66	2754720.40	1461559.00	40.5970243	-106.3832656	point
1) JANET 0780 9S-4H9 LP (100'FNL & 1124'FWL,SEC.04)	9293.33	8606.00	274.86	2016.13	2754796.16	1468060.33	40.6148708	-106.3832259	point
3) JANET 0780 9S-4H9 WP2	13687.23	8617.90	-4113.26	2011.04	2754747.00	1463672.60	40.6028263	-106.3832456	point
2) JANET 0780 9S-4H9 WP1	11281.08	8718.40	-1709.71	2017.10	2754777.20	1466075.90	40.6094235	-106.3832230	point
JANET 0780 9S-4H9 LP Rev-2 (353'FNL & 1140'FWL,SEC.04)	N/A	8736.00	21.86	2021.41	2754798.90	1467807.30	40.6141764	-106.3832070	point

SURVEY PROGRAM - Ref Wellbore: JANET 0780 9S-4H9 PWB Ref Wellpath: JANET 0780 9S-4H9 (REV-B.0) PWP

Start MD [ft]	End MD [ft]	Positional Uncertainty Model	Log Name/Comment	Wellbore
25.50	4965.31	OWSG MWD rev2 - Standard		JANET 0780 9S-4H9 PWB
4965.31	20277.03	BH AutoTrak Curve/eXpress (2019) (HRGM, Short spacing)		JANET 0780 9S-4H9 PWB



Planned Wellpath Report

JANET 0780 9S-4H9 (REV-B.0) PWP

Page 8 of 8



REFERENCE WELLPATH IDENTIFICATION

Operator	FULCRUM ENERGY OPERATING	Well	JANET 0780 9S-4H9
Field	JACKSON COUNTY (NAD83/TN)	API	05-057-06643
Facility	SEC.04-T07N-R80W	Wellbore	JANET 0780 9S-4H9 PWB
Slot	SLOT#03 JANET 0780 9S-4H9 (378'FNL & 879'FEL,SEC.04)		

DESIGN COMMENTS

MD [ft]	Inclination [°]	Azimuth [°]	TVD [ft]	Comment
25.50	0.000	62.551	25.50	Tie On
500.00	0.000	62.551	500.00	End of Tangent
1327.31	16.546	62.551	1315.86	Build (XS)
8113.31	16.546	62.551	7820.86	KOP
9293.33	86.758	179.972	8606.00	LP
11281.08	86.758	179.972	8718.40	WP1
11581.78	92.770	180.156	8719.64	End of 3D Arc (J)
13687.23	92.770	180.156	8617.90	WP2
14030.46	99.634	180.145	8580.84	End of 3D Arc (J)
15828.62	99.634	180.145	8279.90	WP3
15938.35	101.829	180.143	8259.47	End of 3D Arc (J)
17905.13	101.829	180.143	7856.30	WP4
18302.31	93.885	180.145	7802.05	End of 3D Arc (J)
20044.50	93.885	180.145	7684.00	BHL