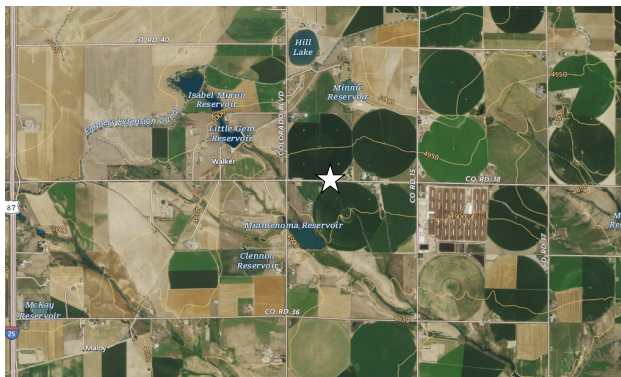




Figure 1

Site Location Map
Kerr-McGee Oil and Gas Onshore LP
Canepa 6-21, 22, 24, 25 Facility
NENW Sec. 6-T3N-R67W
Weld County, Colorado



Source: USGS 7.5 Minute Topographic Map, Johnstown, CO Quadrangle

Date: 03/20/2024



EAGLE
ENVIRONMENTAL
CONSULTING, LLC
 8000 West 44th Avenue, Wheat Ridge, CO 80033
 Phone: 303-433-0479 Fax: 303-325-5449