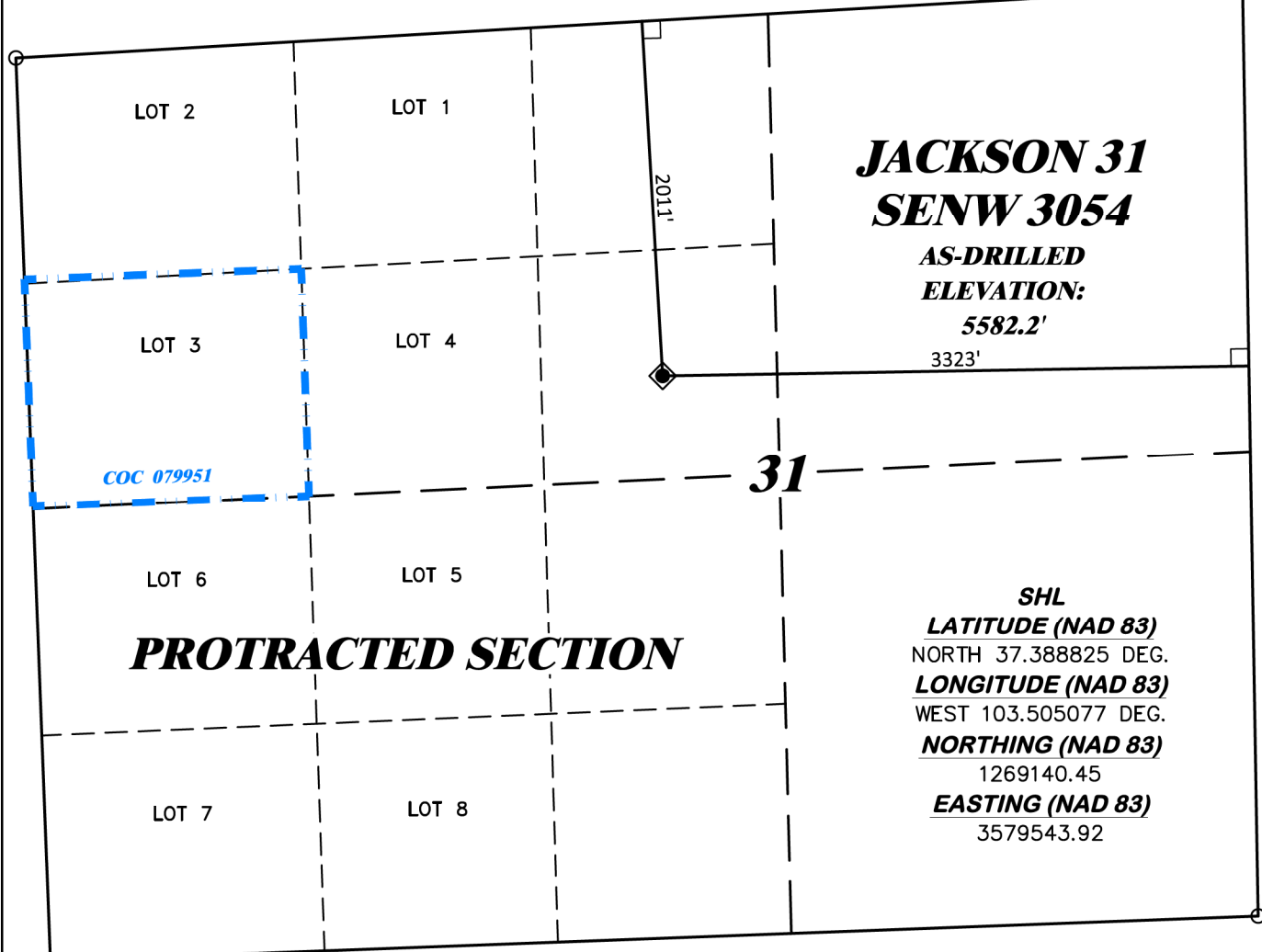


R. 54 W.

N41°43'18"E 12938.37'
TO DRG CP 21 3054



**JACKSON 31
SENW 3054**

**AS-DRILLED
ELEVATION:
5582.2'**

3323'

**SHL
LATITUDE (NAD 83)
NORTH 37.388825 DEG.
LONGITUDE (NAD 83)
WEST 103.505077 DEG.
NORTHING (NAD 83)
1269140.45
EASTING (NAD 83)
3579543.92**

PROTRACTED SECTION

COC 079951

2011'

31

T. 30 S.

LEGEND

- ◆ WELL LOCATION
- └ DENOTES 90° TIE
- PROTRACTED QUADRANGLE INTERSECTION LOCATION
- ▬ BLM LEASE LINE

BASIS OF BEARINGS, ELEVATIONS & DATUM

SPCS COLORADO SOUTH NAD 27 BASED ON GPS OBSERVATIONS AND OPUS SOLUTION ON 1/2" IN. ALUM. CAP ON No. 5 REBAR DRG CONTROL POINTS:

"CP 21 3054" HAVING A NAD83(2011) POSITION OF: LAT 37° 27' 45.56" NORTH LONG 103° 28' 45.77" WEST NAVD88 ELEVATION: 4962.49'	"CP 35 2954" HAVING A NAD83(2011) POSITION OF: LAT 37° 28' 39.68" NORTH LONG 103° 26' 15.82" WEST NAVD88 ELEVATION: 5309.79'
---	---

BEARINGS HEREIN RELATIVE TO GRID BEARING BETWEEN SAID POINTS: N18°23'17"E

SCALE' 1" = 1000'
500' 0 1000'



GRID NORTH

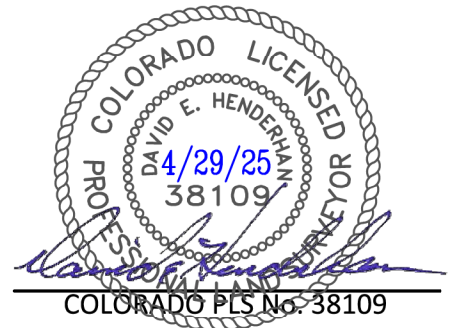
NOTES

1. GPS OPERATOR T. SHERRILL OBSERVED A PDOP OF 2.3.
2. ALL GPS OBSERVATIONS ARE IN COMPLIANCE WITH COGCC RULE No.215.

SURVEYOR'S STATEMENT

I, DAVID E. HENDERHAN, AN EMPLOYEE AND AGENT ON BEHALF OF D.R. GRIFFIN & ASSOCIATES, INC. STATE THE PLAT HEREON IS A CORRECT REPRESENTATION OF A SURVEY MADE UNDER MY SUPERVISION ON THE 22nd DAY OF APRIL, 2025 OF THE SHOWN JACKSON 31 SENW 3054 AS-DRILLED LOCATION.

Notice: In accordance with Colorado State Law, any legal action based upon any defect in this survey plat must commence within three (3) years after first discovery of such defect. In no event, may any action based upon any defect in this survey plat be commenced more than ten (10) years from the date of certification shown hereon.



JACKSON 31 SENW 3054

COLORADO PLS No. 38109

DRG RIFFIN & ASSOCIATES, INC.
 (307) 362-5028 1414 ELK ST., ROCK SPRINGS, WY 82901

**PLAT OF AS-DRILLED LOCATION IN
SENW, SECTION 31, FOR
BNL (ENTERPRISE) INC.**

**2011' F/NL, & 3323' F/EL, SECTION 31,
T. 30 S., R. 54 W., 6TH P.M.,
LAS ANIMAS COUNTY, COLORADO**

DRAWN: 4/28/2025 - NGJ

SCALE: 1" = 1000'

REVISED: NA

DRG JOB No. 22227

EXHIBIT AS DRLD