



Scale: 10" / 100'
Measured Depth Log

Well Name Jackson 31 SENW 3054

Location Sec. 31, T30S, R54W

State COLORADO

County LAS ANIMAS

Country USA

Rig Number AWS NO. 1

API Number 05-071-09943-00

AFE # 0507109943

Geographic Region TRINIDAD-LA JUNTA

Field JACKSON RANCH

Spud Date 2/17/2025

Drilling Completed TBD

Surface Coordinates SEC. 31, T30S, R54W, NESW, 2171' FNL,3324'

LAT:37.388810°
LONG: -103.505083°

Bottom Hole Coordinates SEC. 31, T30S, R54W, NESW, 2171' FNL,3324'

Ground Elevation 5582

K.B. Elevation 5587

Logged Interval 40 To 1210

Total Depth 1210

Formation LYONS SAND

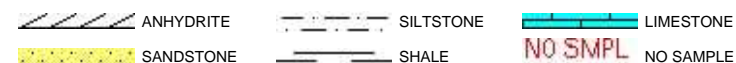
Type of Drilling Fluid AIR, FOAM

Geologist

Name PETER KONDRAT

Company BLUE STAR HELIUM

Rock Types



Accessories

Minerals

± CALCAREOUS
- SILTY

Stringer

//// ANHYDRITE STRINGER
— COAL STRINGER
— SHALE STRINGER

Other Symbols

Engineering

— FORMATION TOP 2

Operator

Company BLUE STAR HELIUM

Address LEVEL 8, LONDON HOUS
216 ST. GEORGE TERRACE
PERTH, WA 6000

BLUE STAR | HELIUM

Other

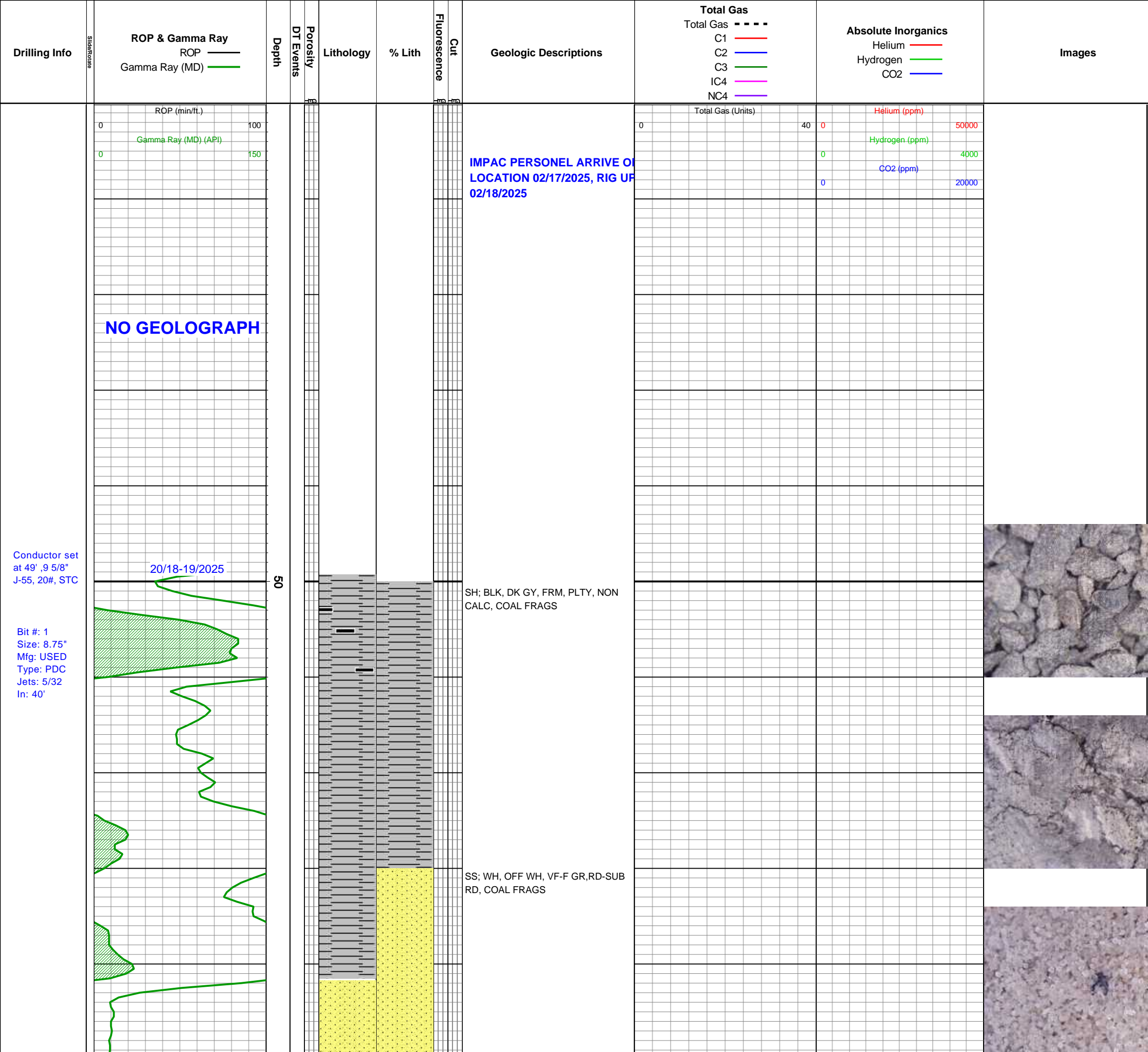
SERVICE COMPANY IMPAC EXPLORATION SERVICES, INC.
1501 LERA DRIVE, SUITE 3
WEATHERFORD, OK 79096

SERVICE ONE MAN SERVICE,
START DATE: 02/18/2025
END DATE: 02/27/2025

EQUIPMENT TERRA SYSTEMS RED BOX: ML-069
UNIT 402

LOGGER: SCOTT OLSON

NOTE NO DEPTH RECORDING EQUIPMENT



Drilling Info

Conductor set at 49' ,9 5/8" J-55, 20#, STC

Bit #: 1
Size: 8.75"
Mfg: USED
Type: PDC
Jets: 5/32
In: 40'

ROP & Gamma Ray
ROP
Gamma Ray (MD)

ROP (min/ft.)
Gamma Ray (MD) (API)

NO GEOLOGRAPH

20/18-19/2025

Depth

50

Porosity

DT Events

Lithology

% Lith

Fluorescence

Cut

Geologic Descriptions

IMPAC PERSONEL ARRIVE ON LOCATION 02/17/2025, RIG UP 02/18/2025

SH; BLK, DK GY, FRM, PLTY, NON CALC, COAL FRAGS

SS; WH, OFF WH, VF-F GR,RD-SUB RD, COAL FRAGS

Total Gas
C1
C2
C3
IC4
NC4

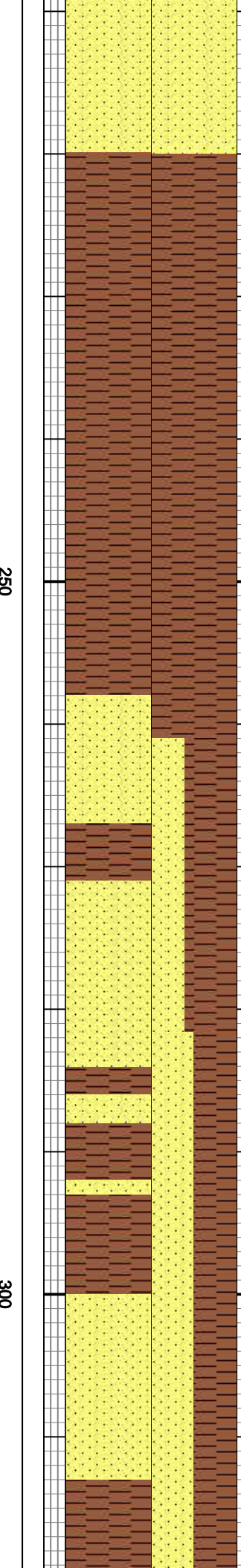
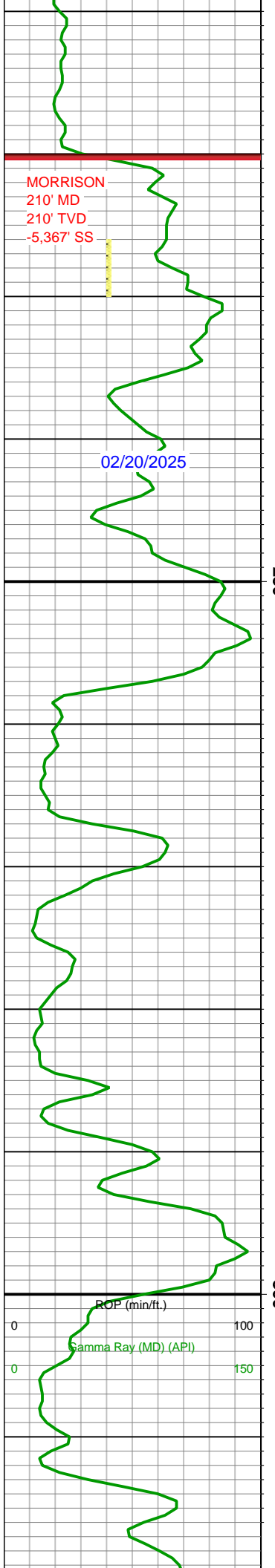
Total Gas (Units)

Absolute Inorganics
Helium
Hydrogen
CO2

Helium (ppm)
Hydrogen (ppm)
CO2 (ppm)

Images





SH; RED, PURPLE, FRI-FRM, AMOR, V SILT, AREN, NON CALC, MORRISON

SH: GY/GRN, FRM-HD, BLKY-AMOR, NON CALC

SS: TAN, OFF WH, LT BRN, VF GR, RD-SUB RD, UNCONS,

SH: GY/GREEN, FRM, BLKY-AMOR, NON CALC, AREN, SLTY

SH: GY/GREEN, FRM, BLKY-AMOR, NON CALC, AREN, SLTY

SH: GY/GREEN, FRM, BLKY-AMOR,

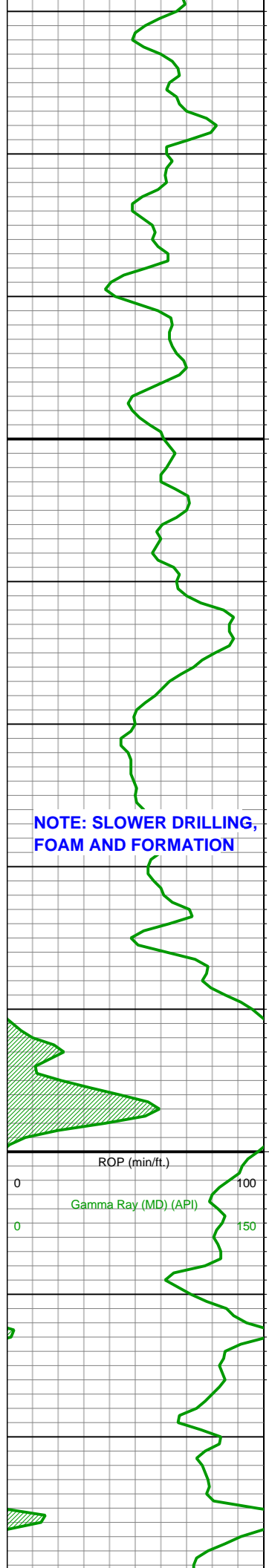
243' SHUT DOWN FOR THE NIGHT

WATER INFLUX, 264'

HOLE NOT CLEARING, RIG UP FOAM SYSTEM

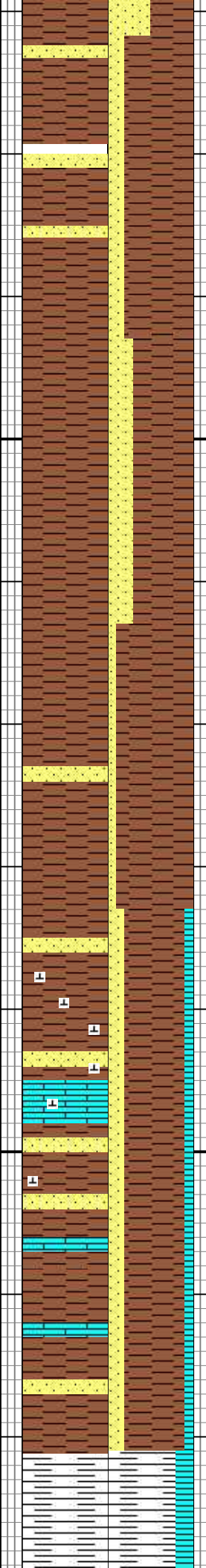
Total Gas (Units)	40	0	Helium (ppm)	50000
		0	Hydrogen (ppm)	4000
		0	CO2 (ppm)	20000





350

400



NON CALC, AREN, SLTY

SH; RED PURPLE, FRM., FRI, BLKY, AMOR, NON CALKC

SH; RED PURPLE, FRM., FRI, BLKY, AMOR, NON CALCS; SS WH, OFF WH, LT GY, FRM-HD, VF-F GR, RD-SUB RD, WELL CONS, SIL CMT

SH; LT GY, LT GY/GREEN, FRM BLKY, AMOR, NON CALCS; SS WH, OFF WH, LT GY, FRM-HD, VF-F GR, RD-SUB RD, WELL CONS, SIL CMT

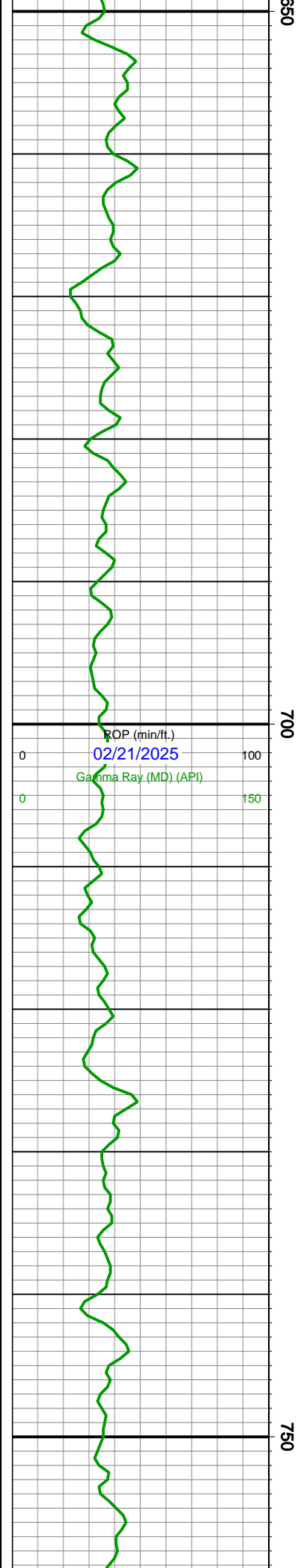
SH; GY, LT GY, FEW RED, FRM-HD, V AREN IP, GLAU, PYR, SS: WH, OFF WH, LT GY, VF GR, SME F GR, SUB RD, FEW SUB ANG, WELL CONS, GLAU, PYR, LS WH, OFF WH, LT GY, FRM, HD, MICRO XLN, DNS, PYR, GLAU, AREN

SH; GY, LT GY, FEW RED, FRM-HD, V AREN IP, GLAU, PYR, SS: WH, OFF WH, LT GY, VF GR, SME F GR, SUB RD, FEW SUB ANG, WELL CONS, GLAU, PYR, LS WH, OFF WH, LT GY, FRM, HD, MICRO XLN, DNS, PYR, GLAU, AREN

SH; GY, LT GY, FRM, BLKY, V

Total Gas (Units)		40	0	Helium (ppm)	50000
		0	0	Hydrogen (ppm)	4000
			0	CO2 (ppm)	20000

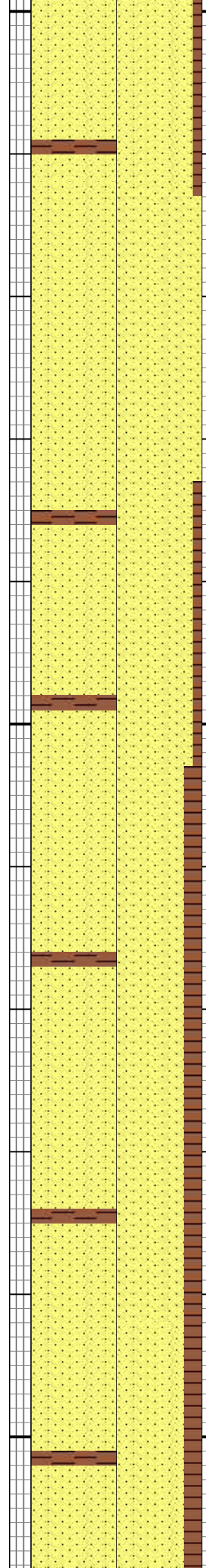




650

700

750



RD, RED CLAY AND SIL CMT, MOD SRT, MOD-WEL CONS, ARG: SH: PURPLE, RED, FRM, BLKY, TR AREN, NON CALC

SS: RED, PINK, ORANGE, VF-MED GR, SUB RD, RED CLAY AND SIL CMT, MOD SRT, MOD-WEL CONS, ARG

SS: RED, PINK, TR YEL TR GREEN WH, VF-MED GR, SUB RD-SUB ANG, POOR SRT, MOD CONS, RED CLAY AND SIL CMT, ARG MAT(VARICOLORED) SH; RED YEL PURPLE, GY, VARICOLORED, FRM, FRI, AMOR, AREN-GRDG TO SS,

SS: RED, PINK, ORANGE, VF-MED GR, SUB RD, RED CLAY AND SIL CMT, MOD SRT, MOD-WEL CONS, ARG: NOTE, SAMPLE AFTER TRIP CONTAINS ABUNDANT CAVINGS MOSTLY MORRISON SH

SS: RED PINK, VF-MED GR, SUB RD, RED CLAY AND SIL CMT, MOD SRT, MOD-WEL CONS, ARG: SH: PURPLE, RED, FRM, BLKY, TR AREN, NON CALC, CAVINGS ABUNDANT

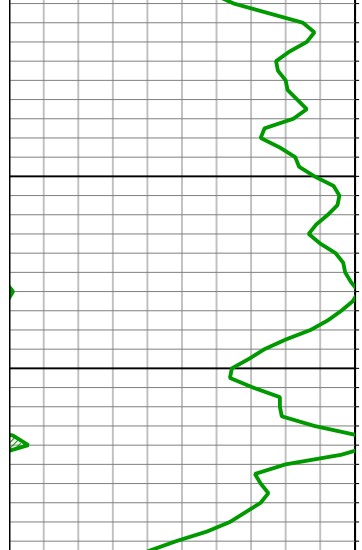
SS: PINK RED FEW WH VF-F GR, SUB RD, RED CLAY AND SIL CMT, MOD SRT, MOD-WEL CONS, ARG: SH: PURPLE, RED, FRM, BLKY, TR AREN, NON CALC, CAVINGS BEGINING TO CLEAN UP

703' MD SHUT DOWN FOR THE NIGHT TRIP OUT TO SURFACE,

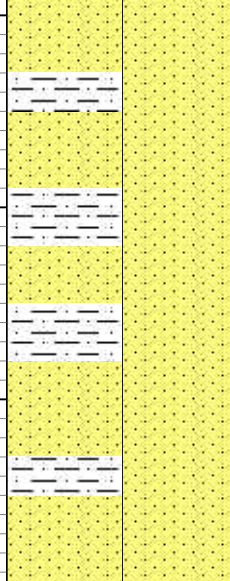
0	40	0	38 bbls of water blown down	0
			30' of fill	50000
			Helium (ppm)	
			Hydrogen (ppm)	4000
			CO2 (ppm)	20000



HOLE UNLOADING PERIODICALLT



006

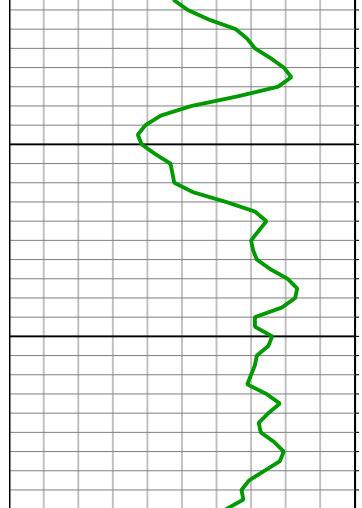


SS: RED, PINK, ORANGE, VF-MED GR, SUB RD, RED CLAY AND SIL CMT, MOD SRT, MOD-WEL CONS, ARG

SS: PINK, ORANGE, RED, VF-F GR, SUB RD-SUB ANG, RED CLAY AND SIL CMT, MOD SRT, MOD-WEL CONS, ARG, SILT

SS: ORANGE, RED, PINK, VF GR, SILT, RD, SME SUB RD, MOD SRT, WELL CONS, ABUNDANT SILT, FINING DOWNWARDS ARG, CLAY& SIL CMT

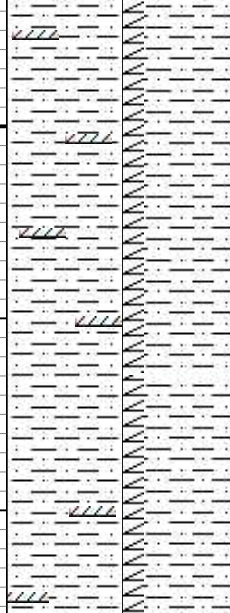
HOLE UNLOADING PERIODICALLT



096

NO SMPL NO SMPL
 NO SMPL NO SMPL
 NO SMPL NO SMPL
 NO SMPL NO SMPL
 NO SMPL NO SMPL
 NO SMPL NO SMPL
 NO SMPL NO SMPL
 NO SMPL NO SMPL
 NO SMPL NO SMPL
 NO SMPL NO SMPL
 NO SMPL NO SMPL

NO SAMPLE, NO RETURNS



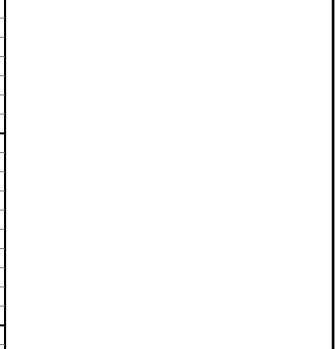
SLTSTS: RED ORANGE, PINK, FRM, BLKY, AREN, ANHY: WH, OFF WH, VF XLN, FRM, CLN

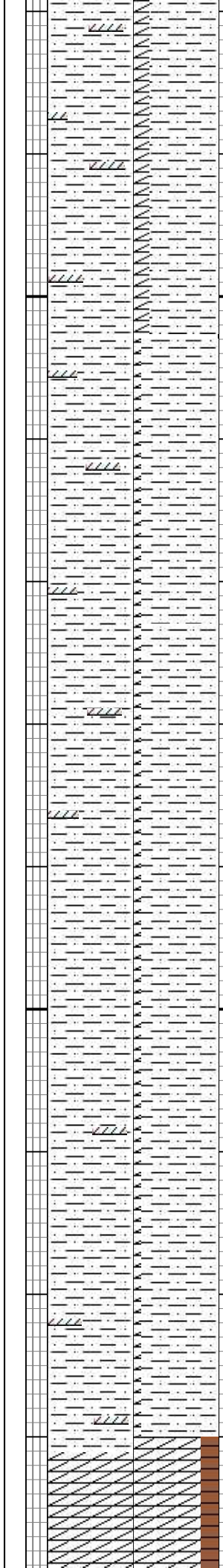
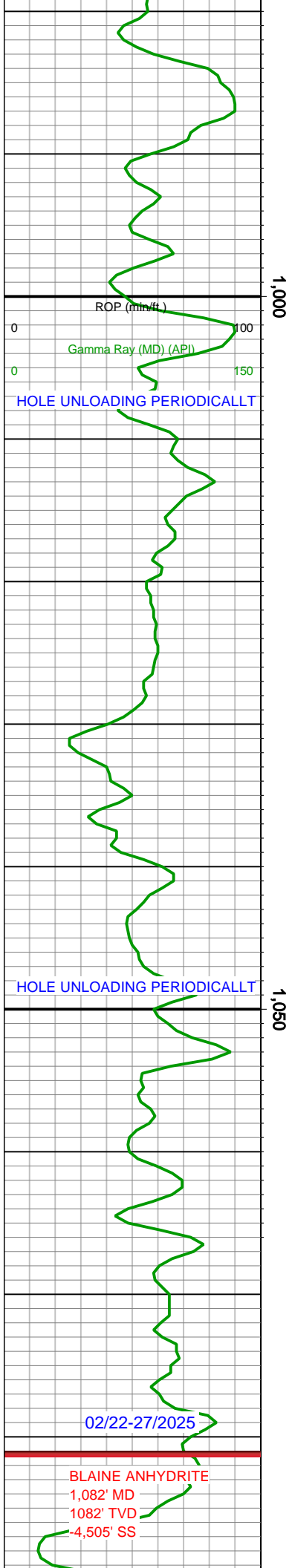
SLTST: PURPLE, RED, ORANGE, FRM-HD, BLKY, AREN, ANHY: WH, OFF WH, MICXLN, DNS-XLN, PRED CLN

HOLE UNLOADING PERIODICALLT



Total Gas (Units)	40	0	Helium (ppm)	50000
		0	Hydrogen (ppm)	4000
		0	CO2 (ppm)	20000





SLTST: RED, PURPLE, ORANGE,
FRM-HD, BLKY, V AREN, ANHY:
WH, OFF WH, MICXLN, DNS-XLN,
PRED CLN

SLTST: ORANGE, PINK, RED, FRM,
FEW FRI, BLKY, AREN, ANHY: WH,
OFF WH, MICRO XLN, DNS-XLN,
PRED CLN, FEW WITH PINK EDGE

SLTST: PURPLE, RED, ORANGE,
FRM-HD, BLKY, AREN, ANHY: WH,
OFF WH, MICXLN, DNS-XLN, PRED
CLN

SLTST: ORANGE, RED FRM-HD,
BLKY, V AREN, ANHY: WH, OFF
WH, MICXLN, DNS-XLN, CLN, ANHY:
WH, OFF WH, LT GY, VF XLN,
MICRO XLN, DNS-XLN, CLN

SLTST: ORANGE, FRM,
BLKY-AMOR, V AREN(VF GR,
ANHY: WH, OFF WH, MICXLN,
DNS-XLN, CLN, ANHY: WH, OFF WH,
LT GY, VF XLN, MICRO XLN,
DNS-XLN, CLN

ANHY: WH, LT PINK IP,
SHATTERED ANHY, VF XLN, XLN,
CLN

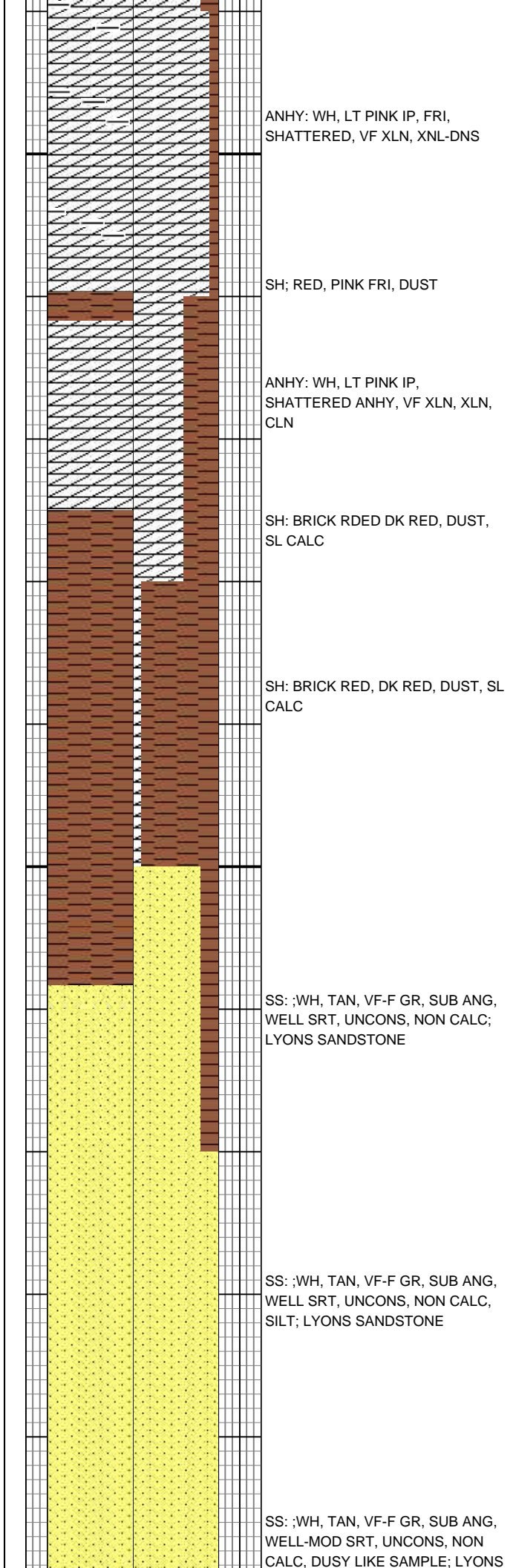
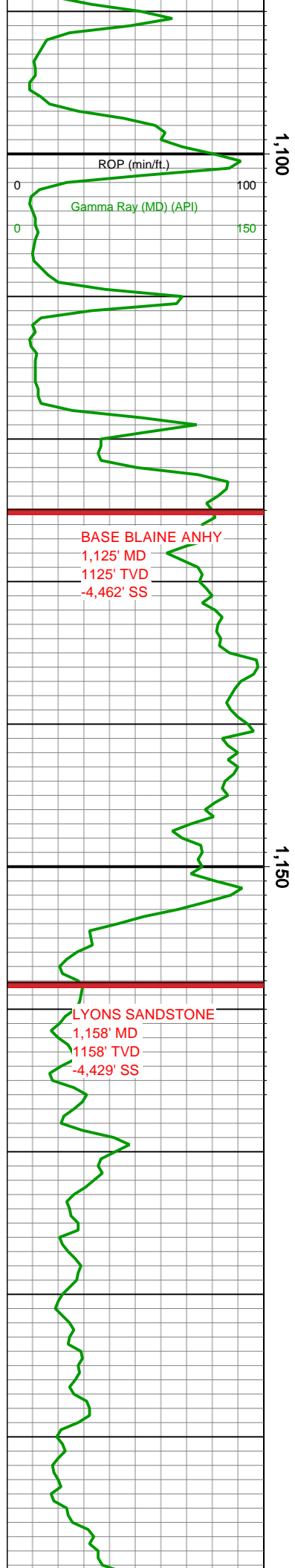
Total Gas (Units)	40	0	Helium (ppm)	50000
		0	Hydrogen (ppm)	4000
		0	CO2 (ppm)	20000



CASING SET AT
1074'
7" .53 jts, J-55
20LBS

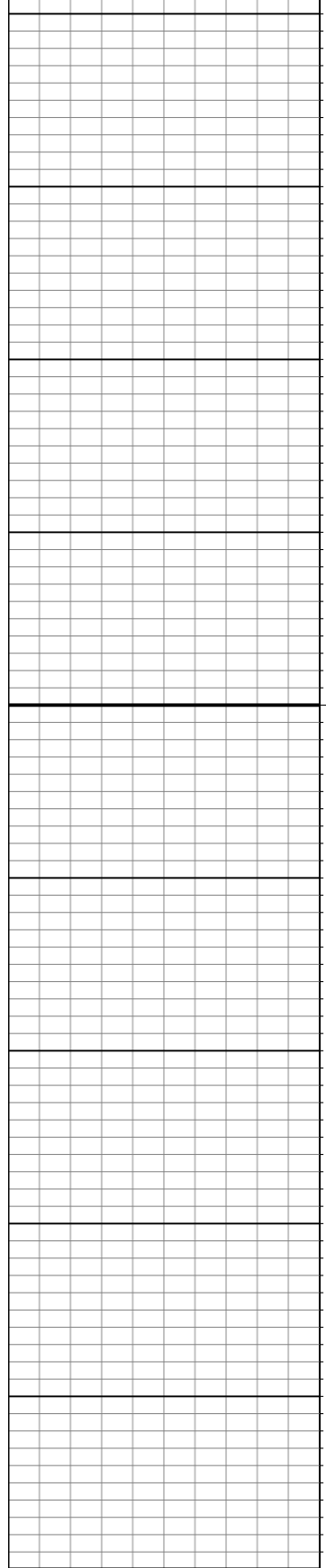
**SHUT DOWN RIG 7:30 PM
@ 1080', CASING POINT**

RUN CASING TO BTM
BEGIN CEMENTING,
02/25/2025



Total Gas (Units)		Helium (ppm)	Hydrogen (ppm)	CO2 (ppm)
0	40	0	50000	0
			4000	
			20000	

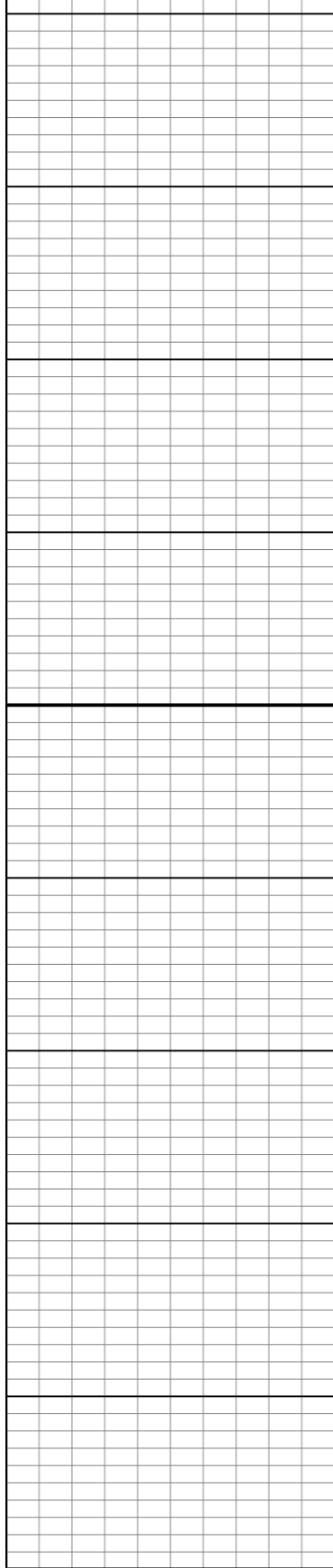
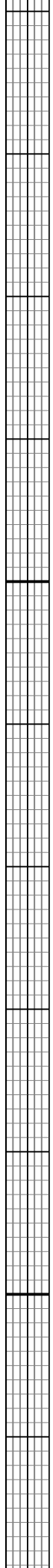




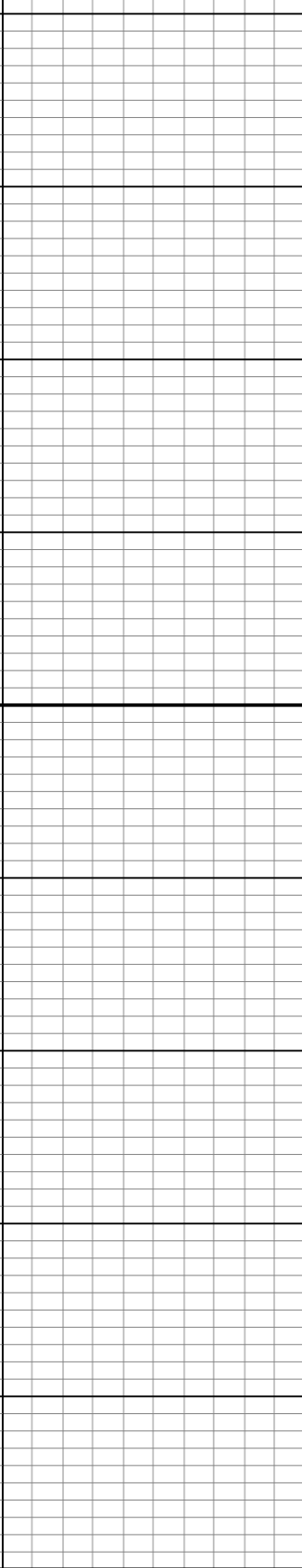
1,350

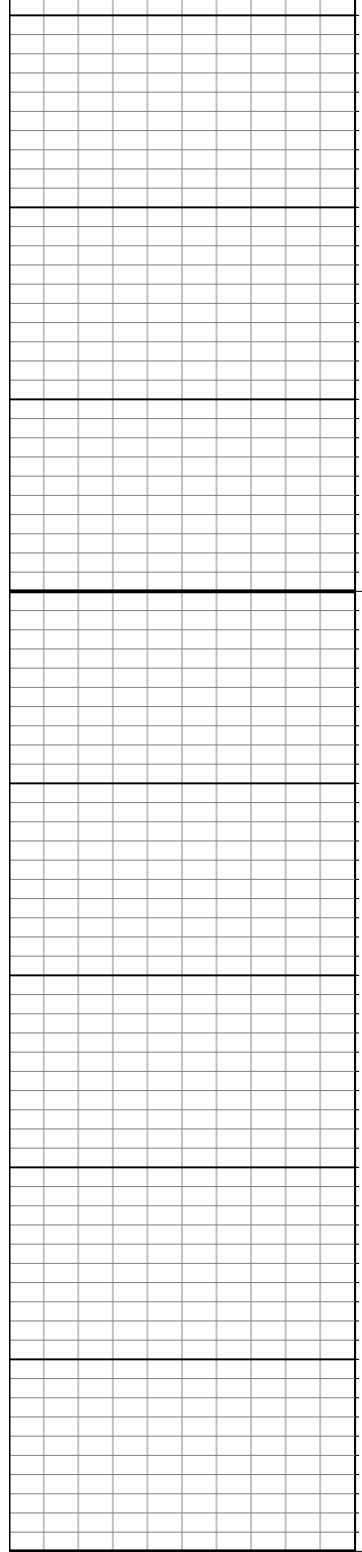
1,400

ROP (min/ft.)	100
Gamma Ray (MD) (API)	150

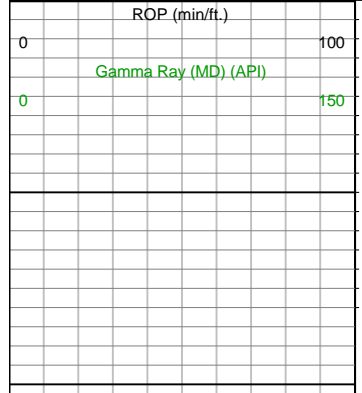


Total Gas (Units)	40	0	Helium (ppm)	50000
			Hydrogen (ppm)	4000
			CO2 (ppm)	20000





1,450



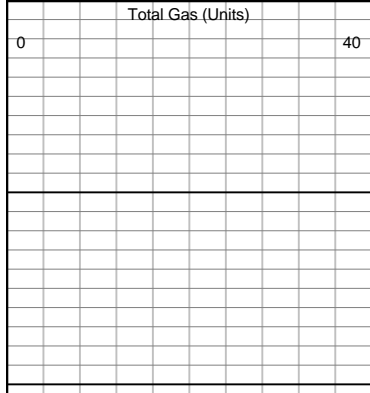
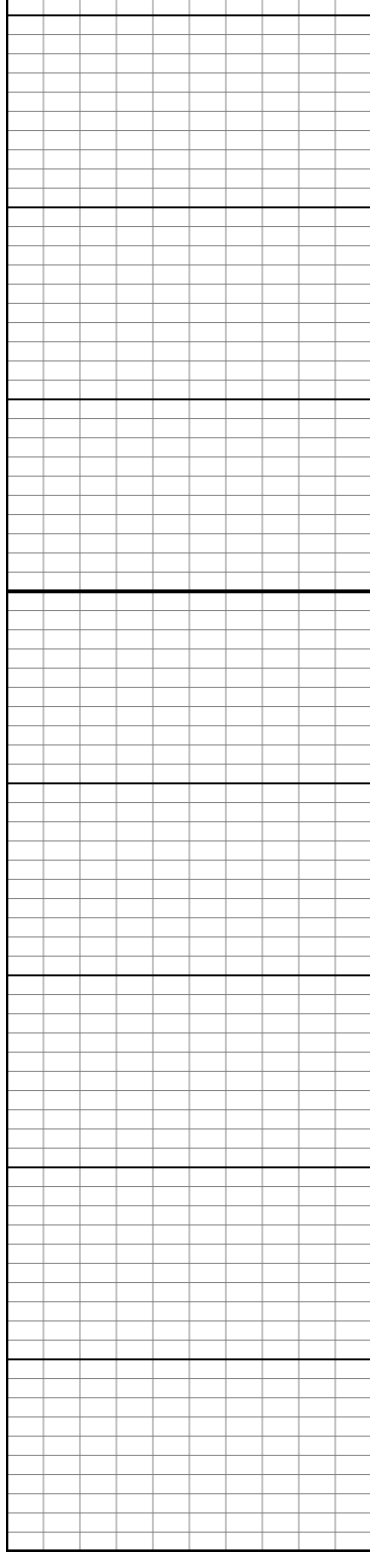
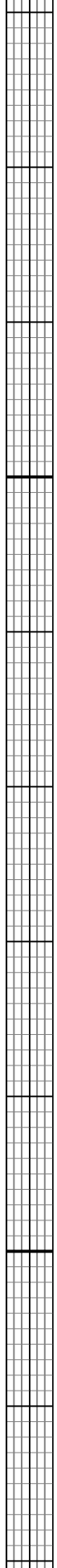
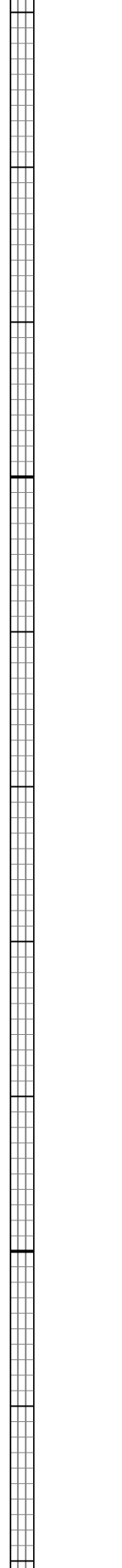
1,500

ROP (min/ft.)

0 100

Gamma Ray (MD) (API)

0 150



Total Gas (Units)

0 40

Helium (ppm)

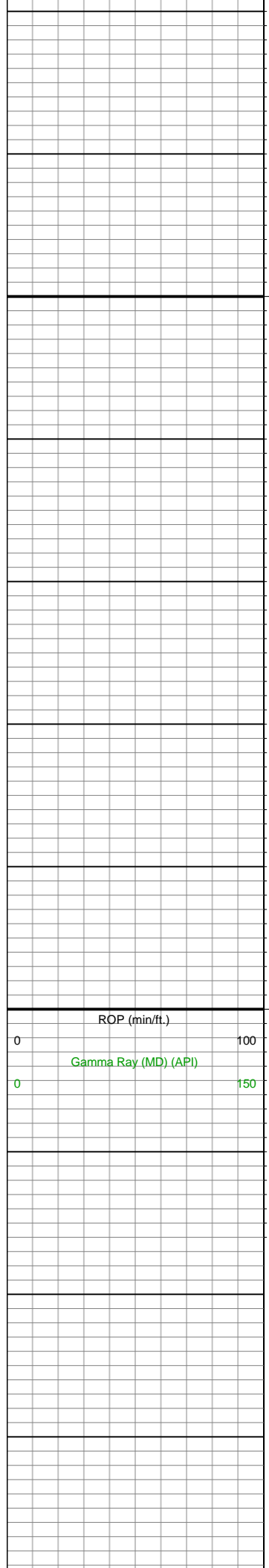
0 50000

Hydrogen (ppm)

0 4000

CO2 (ppm)

0 20000



1,550

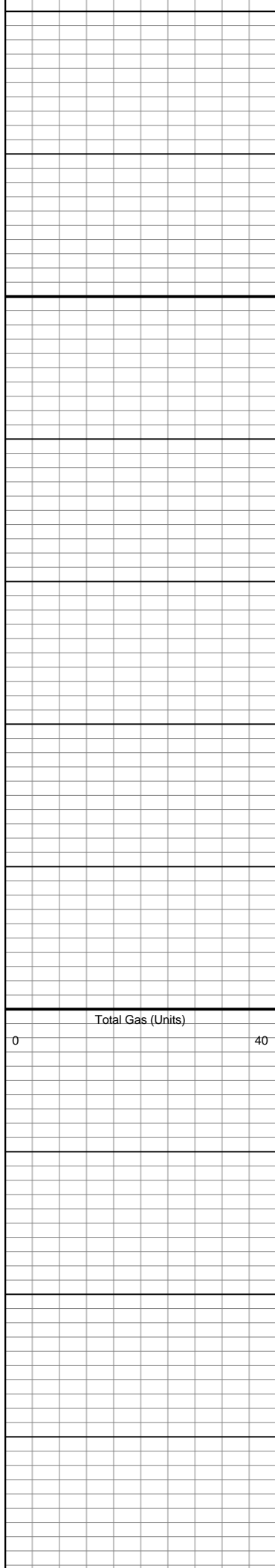
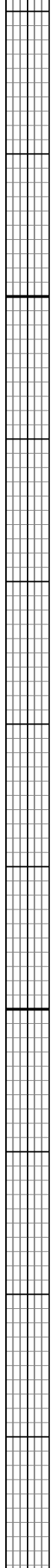
1,600

ROP (min/ft.)

0 100

Gamma Ray (MD) (API)

0 150



Total Gas (Units)

0 40 0

Helium (ppm)

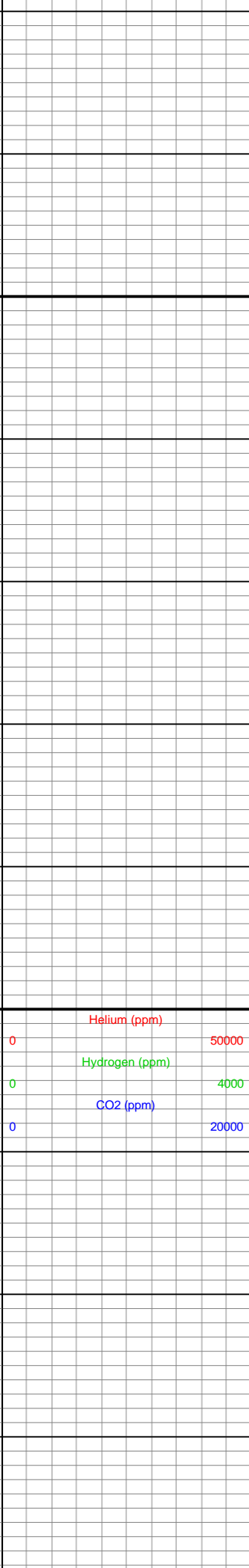
50000

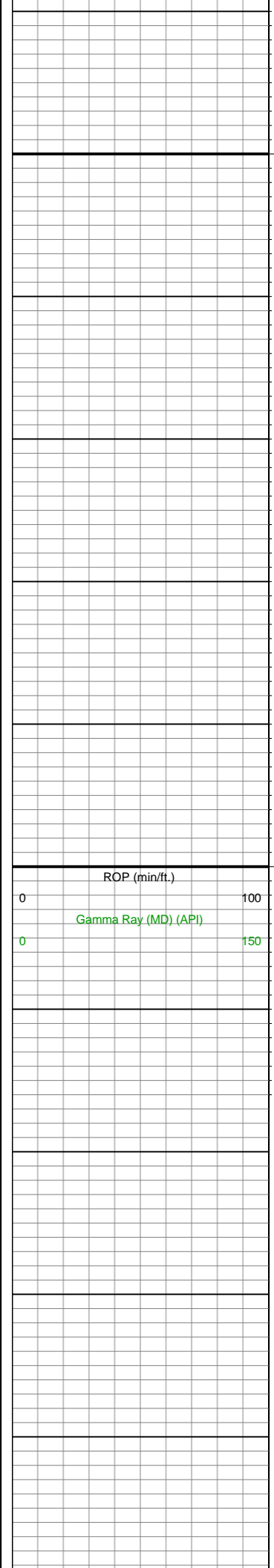
Hydrogen (ppm)

4000

CO2 (ppm)

20000





1,650

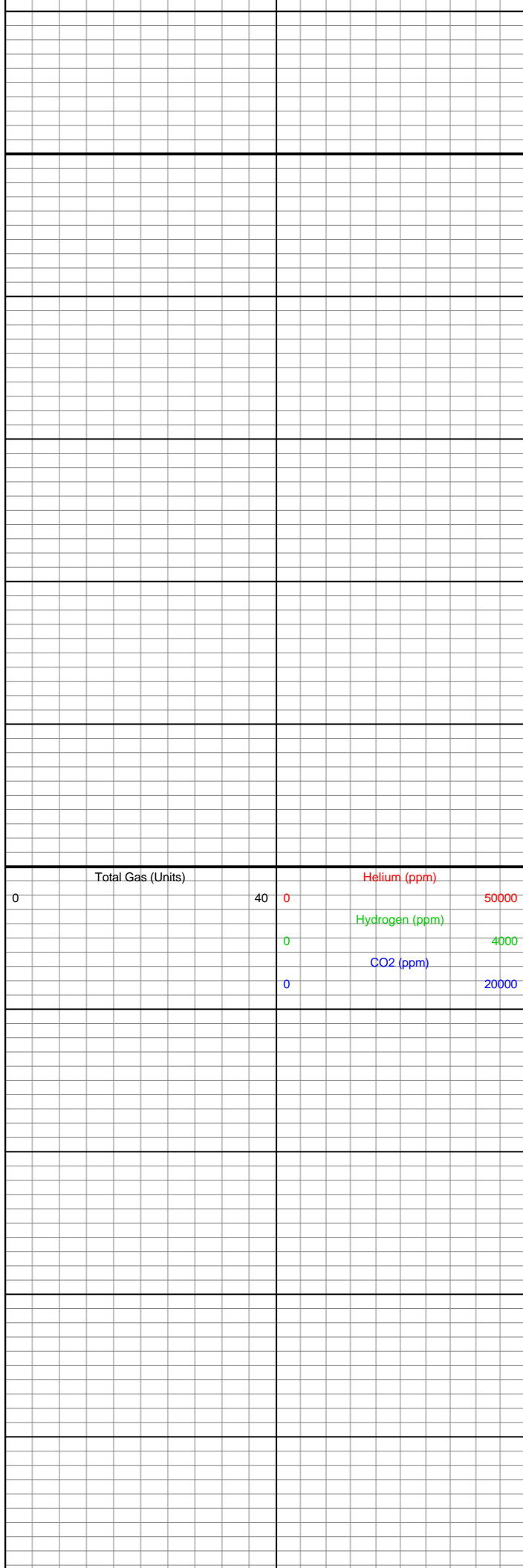
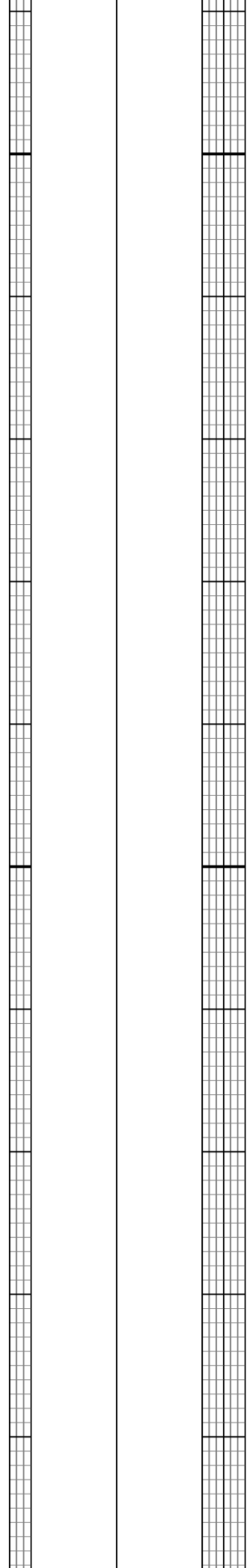
1,700

ROP (min/ft.)

0 100

Gamma Ray (MD) (API)

0 150



Total Gas (Units)

0 40 0

Helium (ppm)

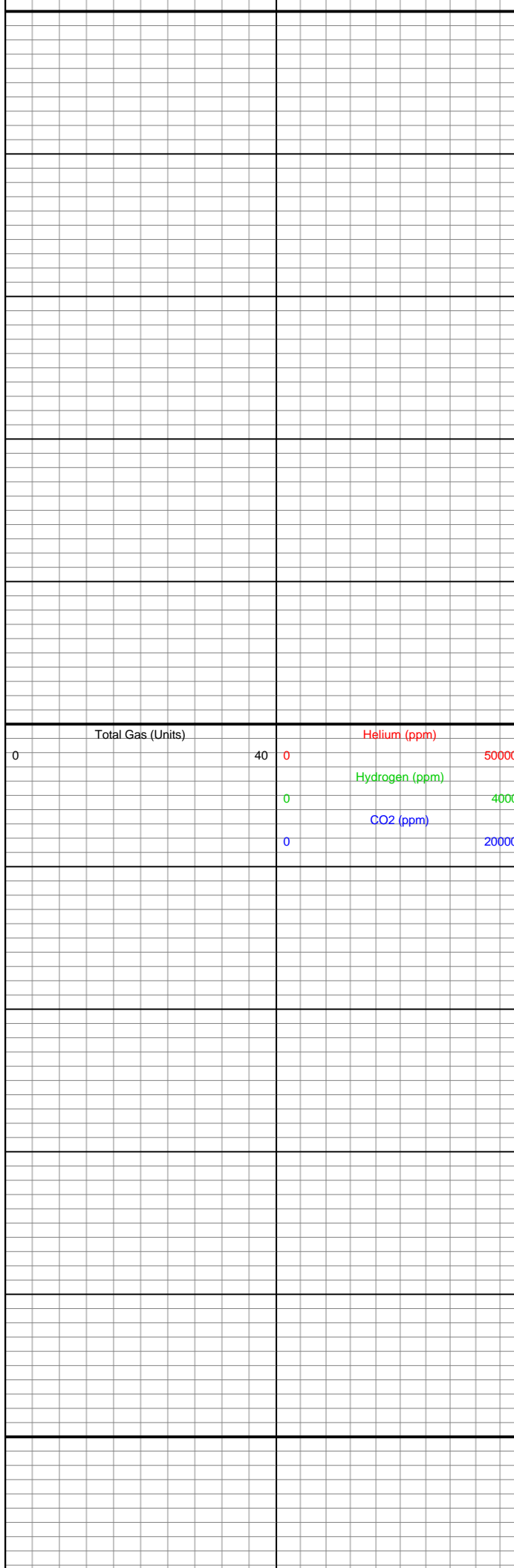
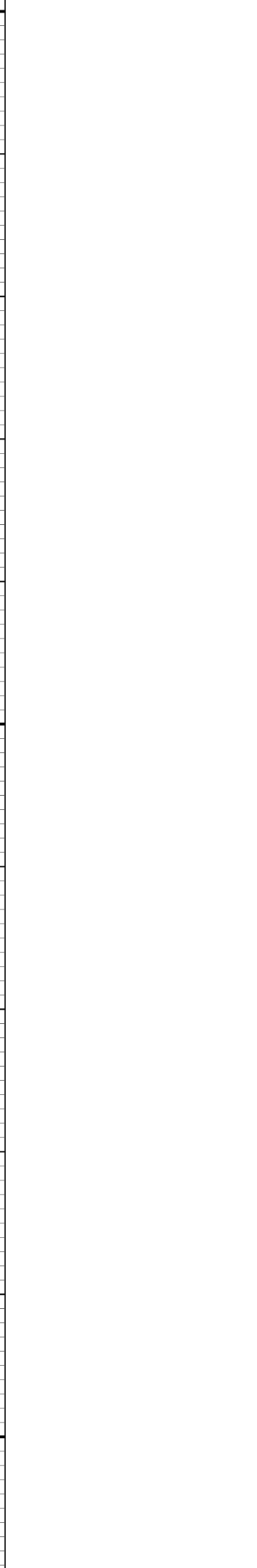
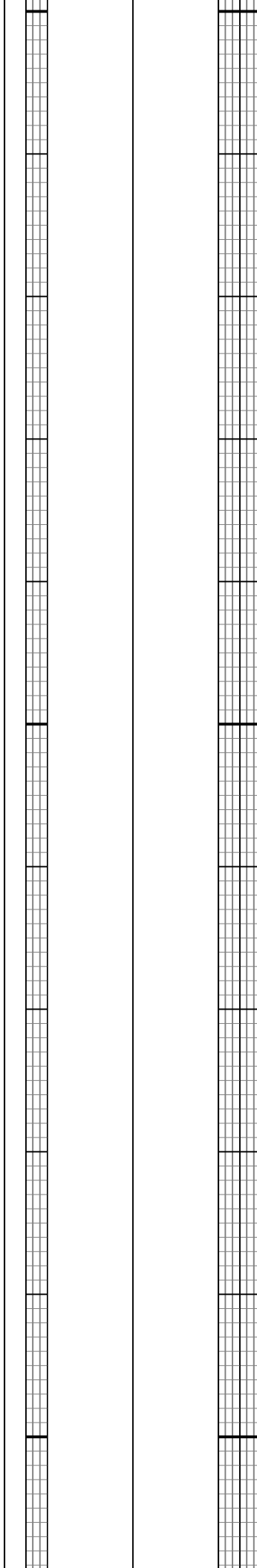
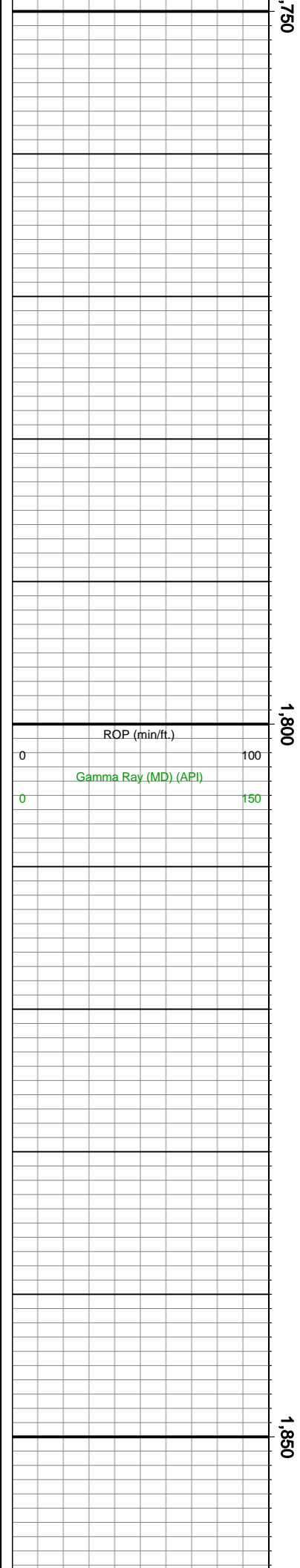
50000

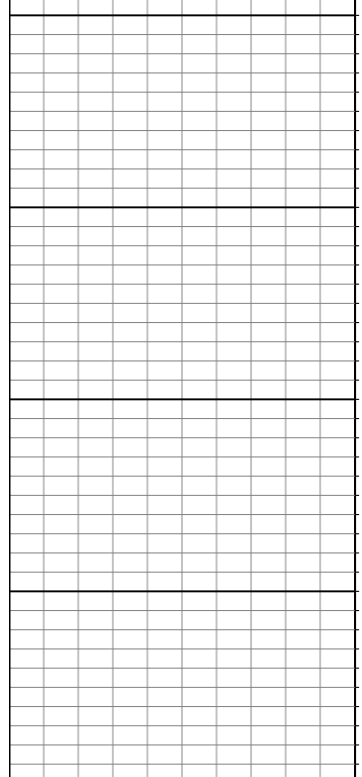
Hydrogen (ppm)

4000

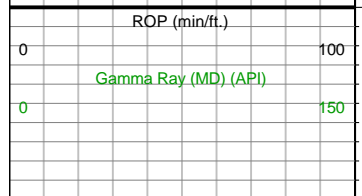
CO2 (ppm)

20000

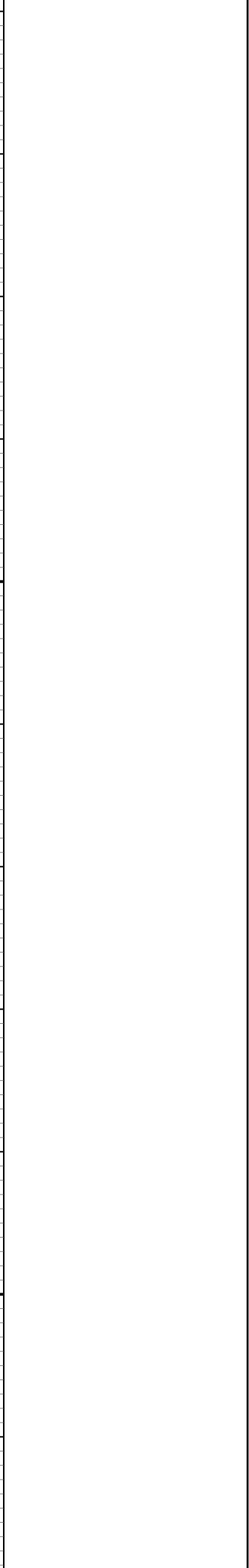
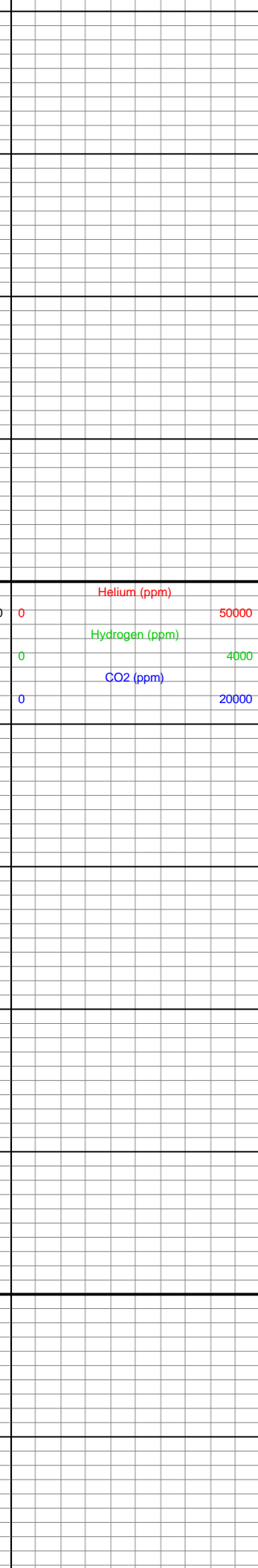
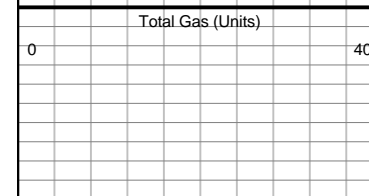
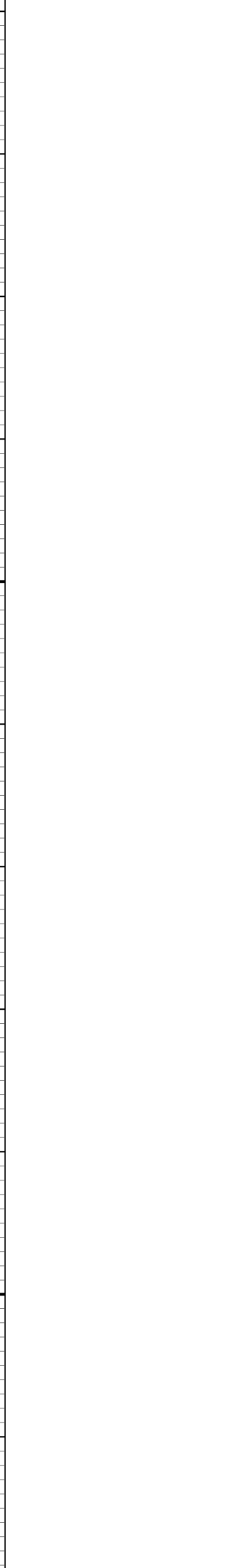
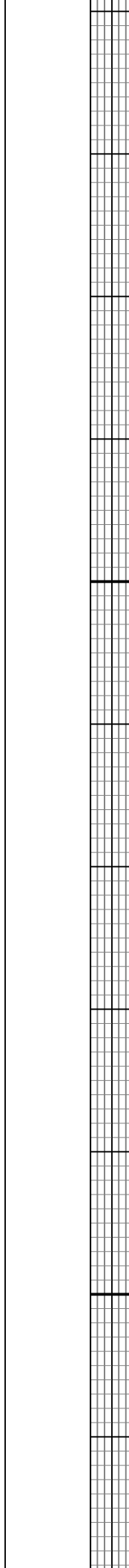
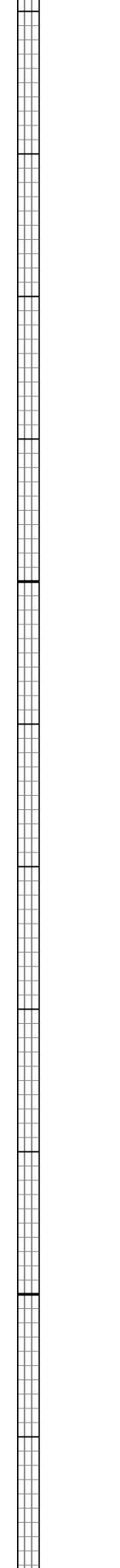


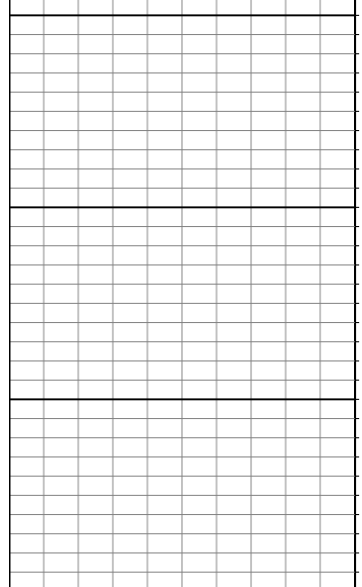


1,900



1,950





ROP (min/ft.)

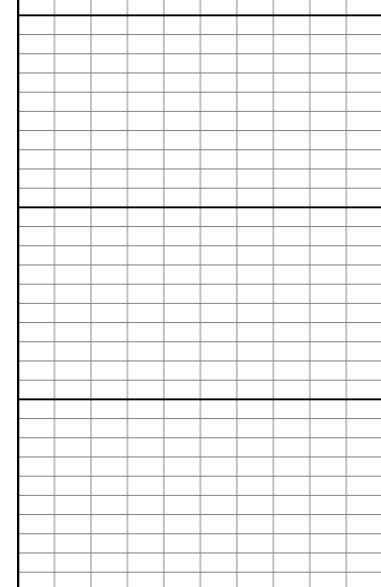
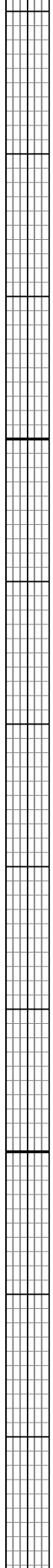
0 100

Gamma Ray (MD) (API)

0 150

2,000

2,050



Total Gas (Units)

0 40

Helium (ppm)

50000

Hydrogen (ppm)

4000

CO2 (ppm)

20000

0

0

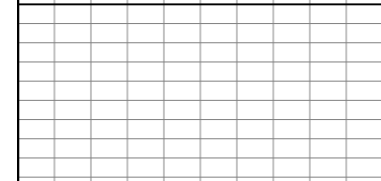
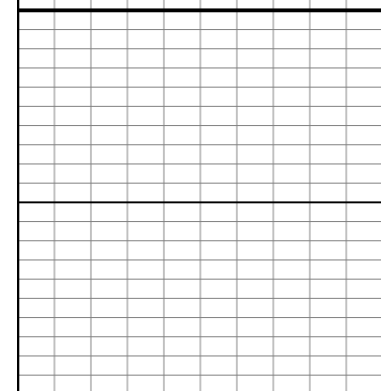
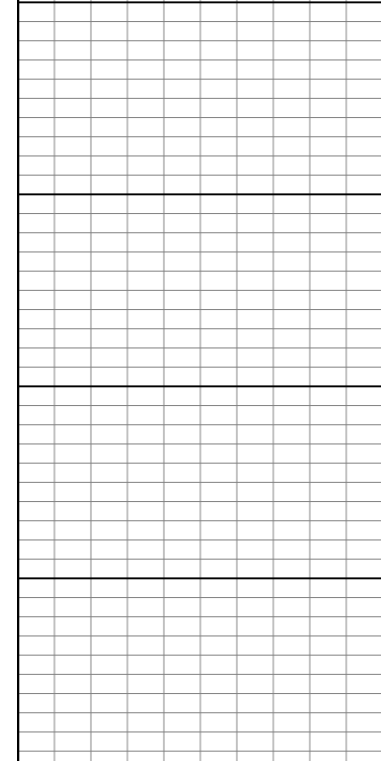
0

0

0

0

0



0

0

0

0

0

0

0

0

0

0

0

0

0

0

0

0

0

0

0

0

0

0

0

0

0

0

0

0

0

0

0

0

0

0

0

0

0

0

0

0

0

0

0

0

0

0

0

0

0

0

0

0

0

0

0

0

0

0

0

0

0

0

0

0

0

0

0

0

0

0

0

0

0

0

0

0

0

0

0

0

0

0

0

0

0

0

0

0

0

0

0

0

0

0

0

0

0

0

0

0

0

0

0

0

0

0

0

0

0

0

0

0

0

0

0

0

0

0

0

0

0

0

0

0

0

0

0

0

0

0

0

0

0

0

0

0

0

0

0

0

0

0

0

0

0

0

0

0

0

0

0

0

0

0

0

0

0

0

0

0

0

0

0

0

0

0

0

0

0

0

0

0

0

0

0

0

0

0

0

0

0

0

0

0

0

0

0

0

0

0

0

0

0

0

0

0

0

0

0

0

0

0

0

0

0

0

0

0

0

0

0

0

0

0

0

0

0

0

0

0

0

0

0

0

0

0

0

0

0

0

0

0

0

0

0

0

0

0

0

0

0

0

0

0

0

0

0

0

0

0

0

0

0

0

0

0

0

0

0

0

0

0

0

0

0

0

0

0

0

0

0

0

0

0

0

0

0

0

0

0

0

0

0

0

0

0

0

0

0

0

0

0

0

0

0

0

0

0

0

0

0

0

0

0

0

0

0

0

0

0

0

0

0

0

0

0

0

0

0

