



DUAL INDUCTION

MIDWEST WIRELINE

Company BNL Enterprise
Well Jackson #31 SENW 3054
Field
County Las Animas
State Colorado

Company BNL Enterprise
Well Jackson #31 SENW 3054
Field
County Las Animas State Colorado

Location: 2071 FNL & 3324 FEL
API #: 05-071-09943
Other Services
SEC 31 TWP 30S RGE 54W
Permanent Datum Ground Level Elevation 5583
Log Measured From Kelly Bushing
Drilling Measured From Kelly Bushing
Elevation
K.B. 5587
D.F.
G.L. 5583

Table with columns: Date, Run Number, Depth Driller, Depth Logger, Bottom Logged Interval, Top Log Interval, Casing Driller, Casing Logger, Bit Size, Type Fluid in Hole, Salinity, ppm CL, Density / Viscosity, pH / Fluid Loss, Source of Sample, Rm @ Meas. Temp, Rmf @ Meas. Temp, Rmc @ Meas. Temp, Source of Rmf / Rmc, Rim @ BHT, Operating Rig Time, Max Rec. Temp. F, Equipment Number, Location, Recorded By, Witnessed By.

<<< Fold Here >>>

All interpretations are opinions based on inferences from electrical or other measurements and Midwest Wireline LLC cannot and does not guarantee the accuracy or correctness of any interpretation, and Midwest Wireline LLC will not be liable or responsible for any loss, costs, damages, or expenses incurred or sustained by anyone resulting from any interpretation made by any of our officers, agents or employees.

Comments

N/A DENOTES NOT AVAILABLE OR NON-APPLICABLE.

Kim, Co
West to Co Rd 179,
11.3 North, 0.15 East, 0.4 North,
East into

Log Measured From: Kelly Bushing 4 Ft. Above Permanent Datum

THANK YOU FOR USING MIDWEST WIRELINE LLC
785-625-3858

Your Midwest Wireline Crew

Engineer: D. Schmidt
Operator:
Operator:
Operator:

This Log Record Was Witnessed By

Primary Witness: Peter Kondrat
Secondary Witness:
Secondary Witness:
Secondary Witness:

Sensor	Offset (ft)	Schematic	Description	Length (ft)	O.D. (in)	Weight (lb)
GR	19.25		GR-M&W (102)	3.00	3.50	50.00
RLL3F RLL3	15.50 15.50					
CILD	8.33		DIL-M&W (502 HT)	18.25	3.50	220.00
CILM	4.50					
SP	0.20					

Dataset: b&I_jackson 31.db: field/well/dil/pass1
 Total length: 21.25 ft
 Total weight: 270.00 lb
 O.D.: 3.50 in

Log Variables

DatabaseC:\ProgramData\Warrior\Data\b&l_jackson 31.db
 Dataset field/well/dil/pass2/_vars_

Top - Bottom

BOREID in 6.125	BOTTEMP degF 100	CASEOD in 7	CASETHCK in 0	FLUIDDEN g/cc 0	MATRXDEN g/cc 2.68	NPORSEL Sandstone	PERFS No
SNDERR mmho/m 2.5	SNDERRM mmho/m 0	SPSHIFT mV 0	SRFTEMP degF 60	SZCOR Off	TDEPTH ft 1210		

Variable Description

BOREID : Borehole I.D.
 BOTTEMP : Bottom Hole Temperature
 CASEOD : Casing O.D.
 CASETHCK : Casing Thickness
 FLUIDDEN : Fluid Density
 MATRXDEN : Matrix Density
 NPORSEL : Neutron Porosity Curve Select

PERFS : Perforation Flag
 SNDERR : Deep Sonde Error Correction
 SNDERRM : Medium Sonde Error Correction
 SPSHIFT : S.P. Baseline Offset
 SRFTEMP : Surface Temperature
 SZCOR : CN Size Cor. ?
 TDEPTH : Total Depth

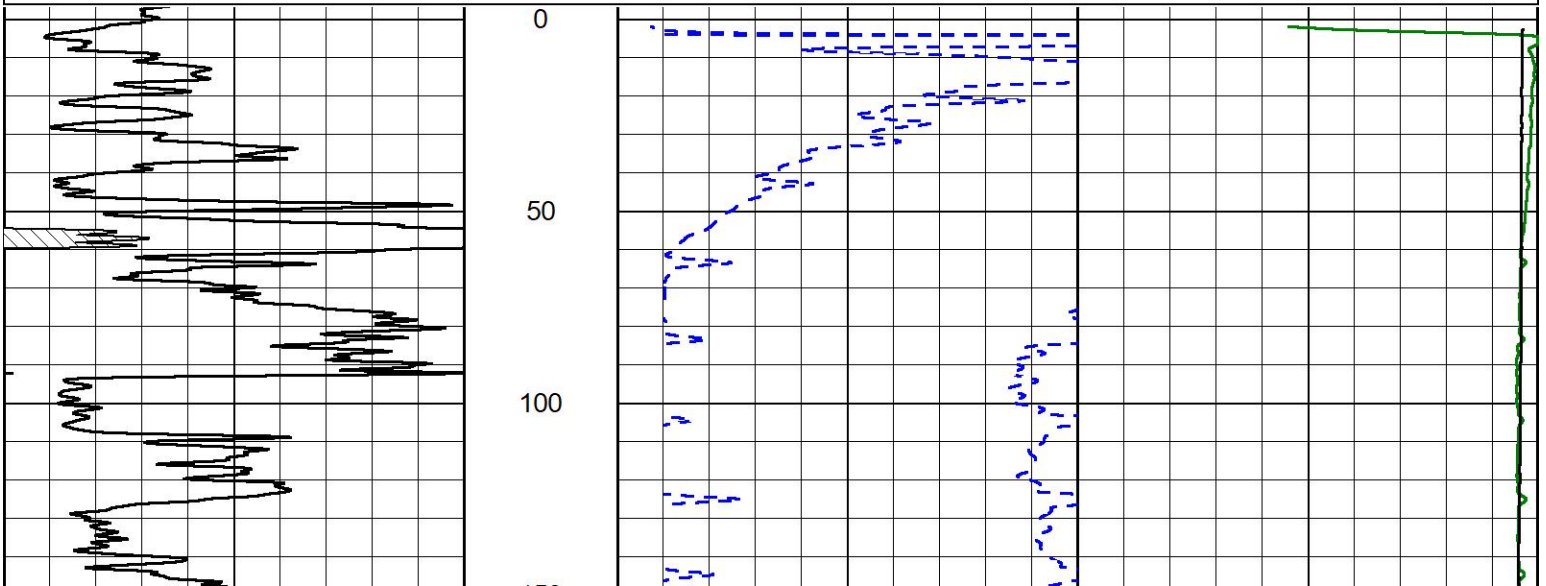


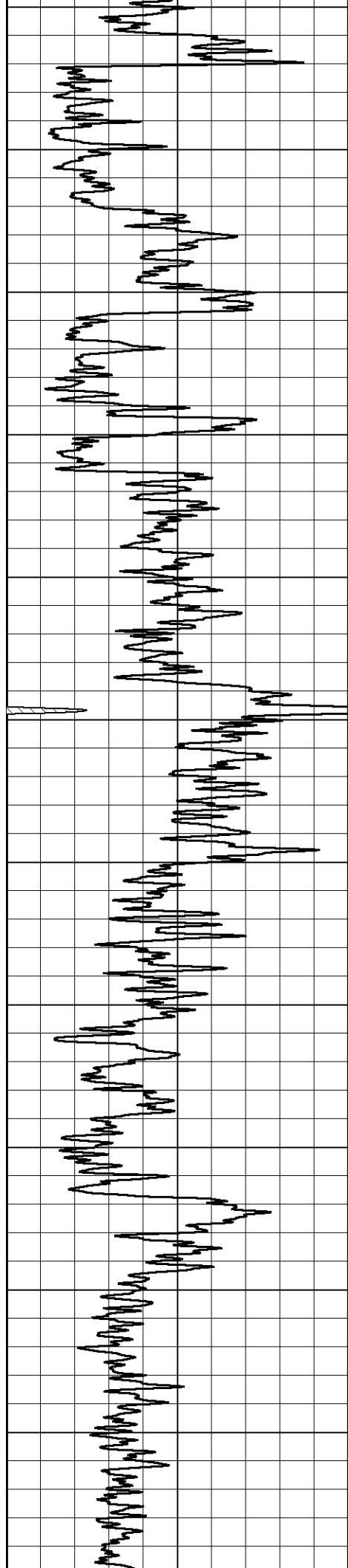
2" SCALE RESISTIVITY

MAIN PASS

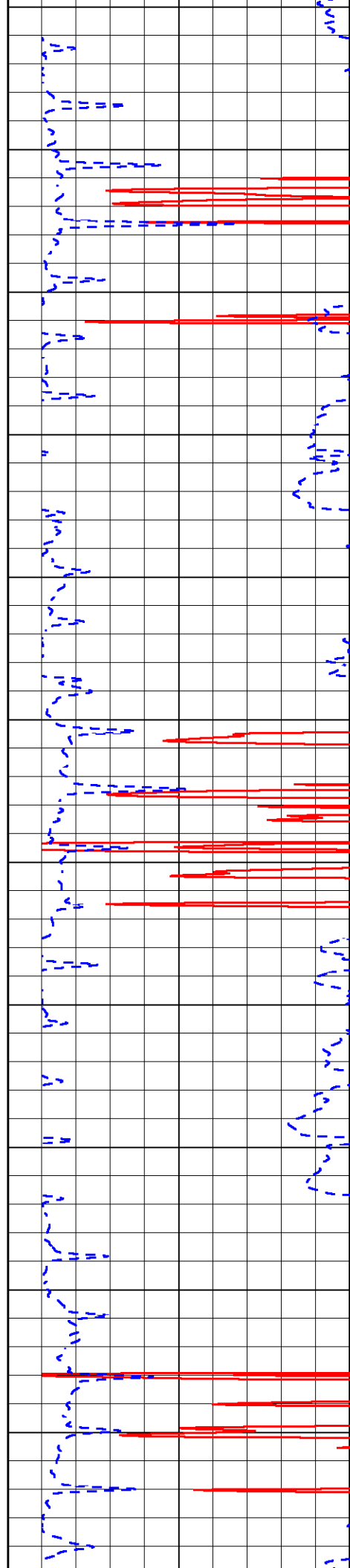
Database File b&l_jackson 31.db
 Dataset Pathname dil/pass2.3
 Presentation Format _dil2in
 Dataset Creation Fri Feb 28 13:24:47 2025
 Charted by Depth in Feet scaled 1:600

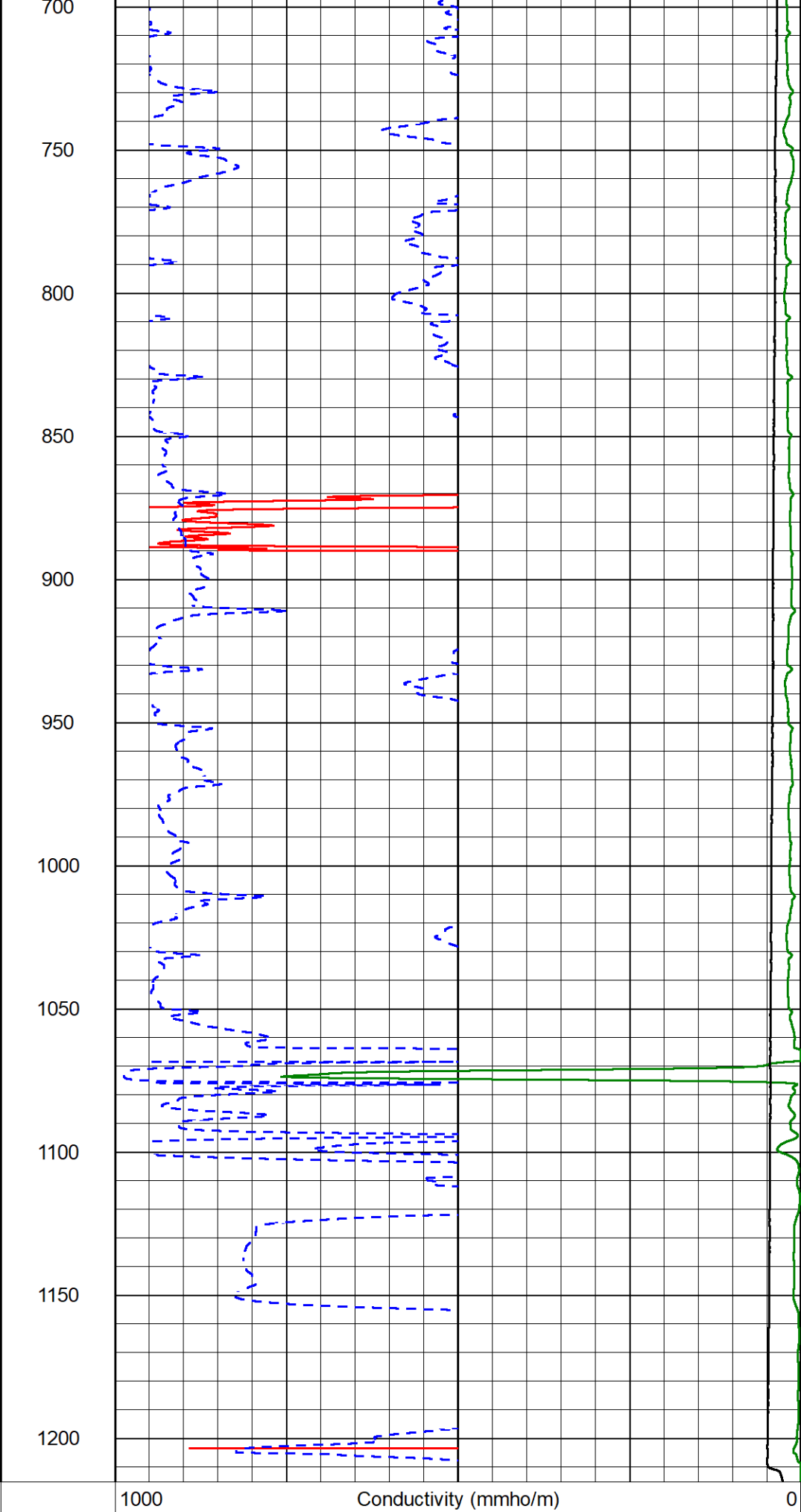
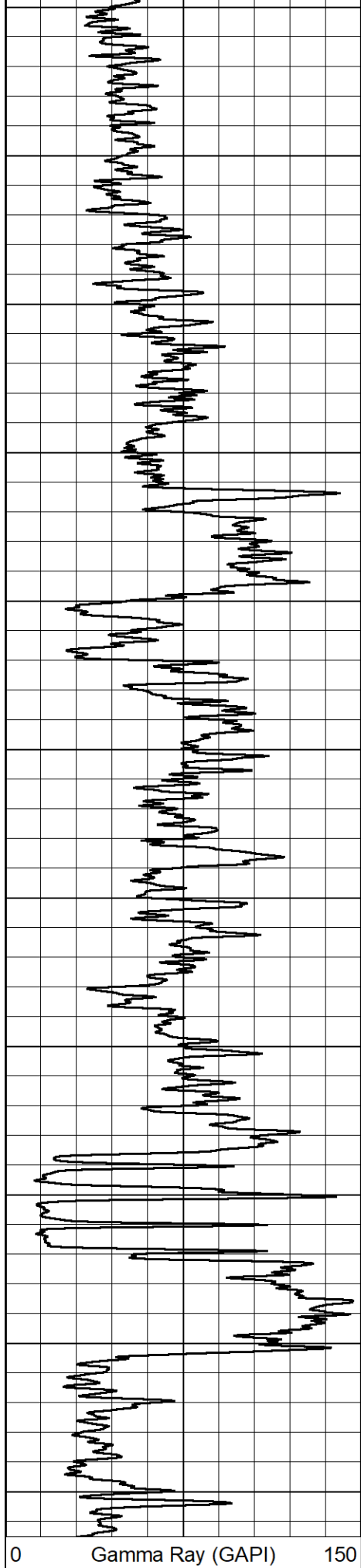
0	Gamma Ray (GAPI)	150	1000	Conductivity (mmho/m)	0
			15000	Line Tension (lb)	0
0	Shallow Resistivity (Ohm-m)	50			
0	Deep Resistivity (Ohm-m)	50			
	Shallow Resistivity				
50	(Ohm-m)	200			
50	Deep Resistivity (Ohm-m)	200			





150
200
250
300
350
400
450
500
550
600
650
700



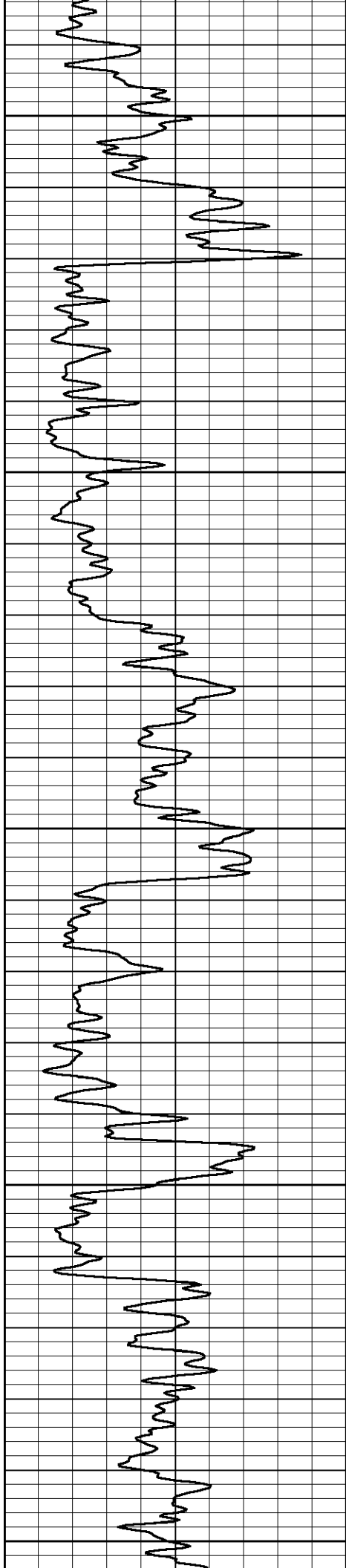


0 Gamma Ray (GAPI) 150

1000 Conductivity (mmho/m) 0

15000 Line Tension (lb) 0

0 Shallow Resistivity (Ohm-m) 50



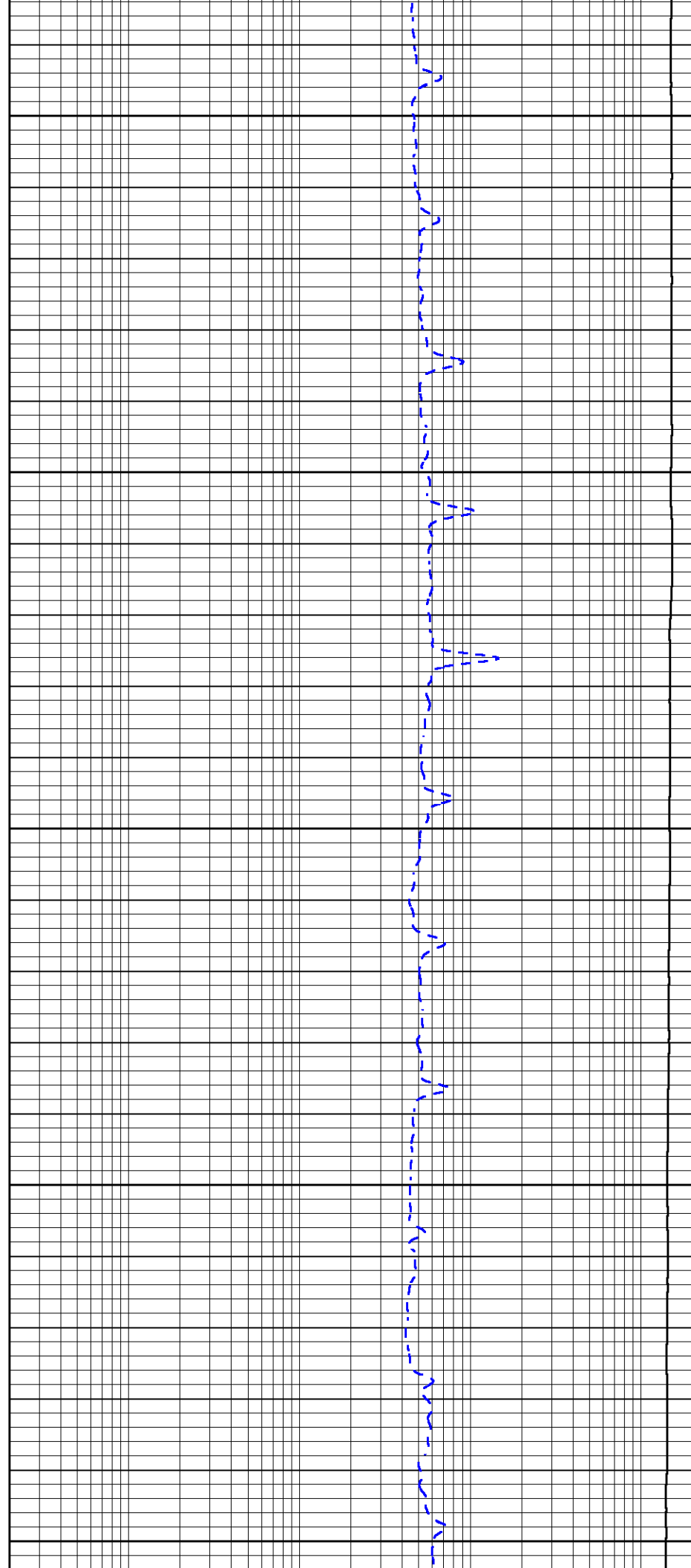
150

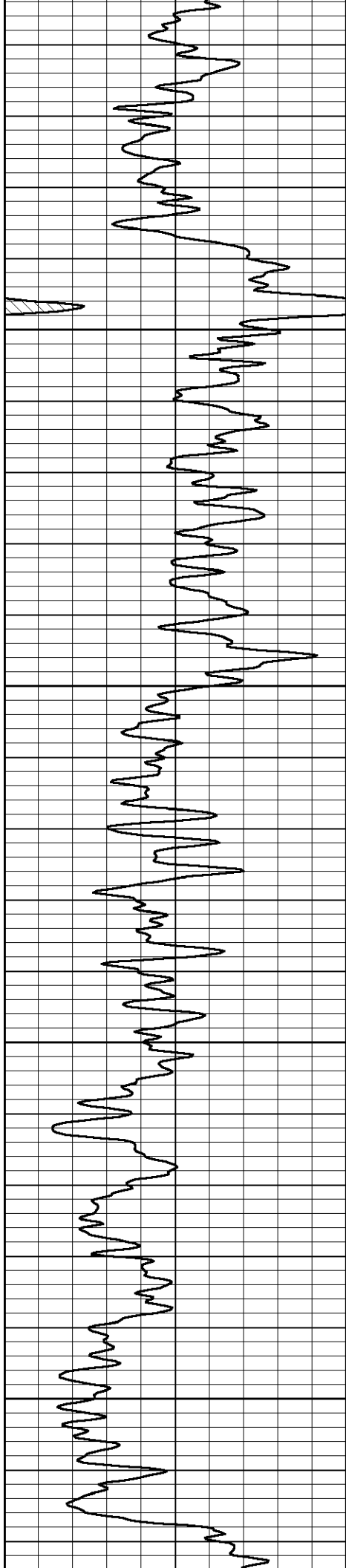
200

250

300

350



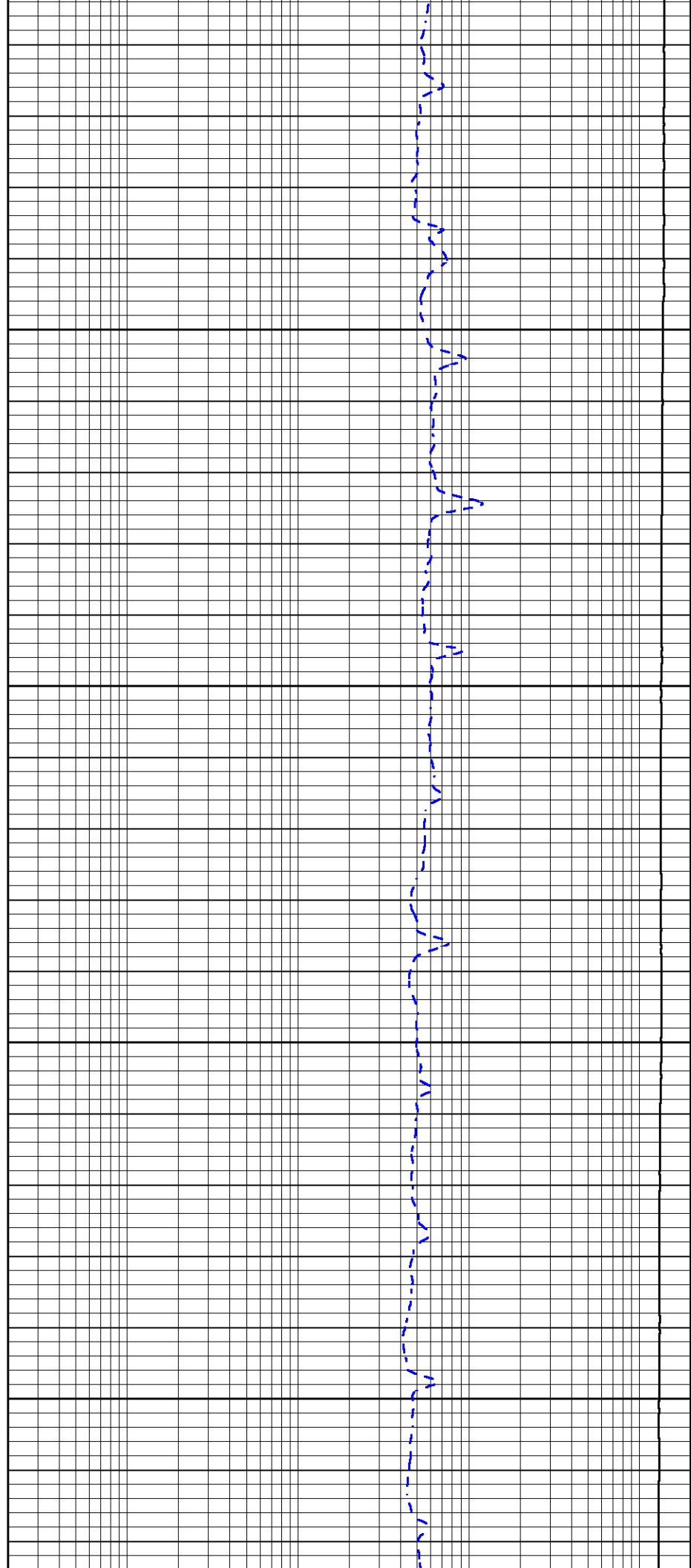


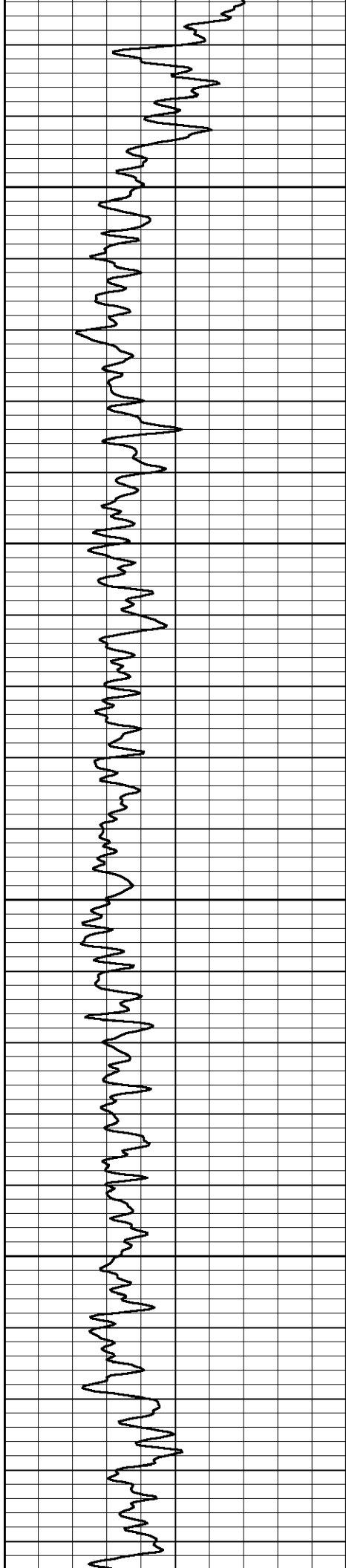
400

450

500

550



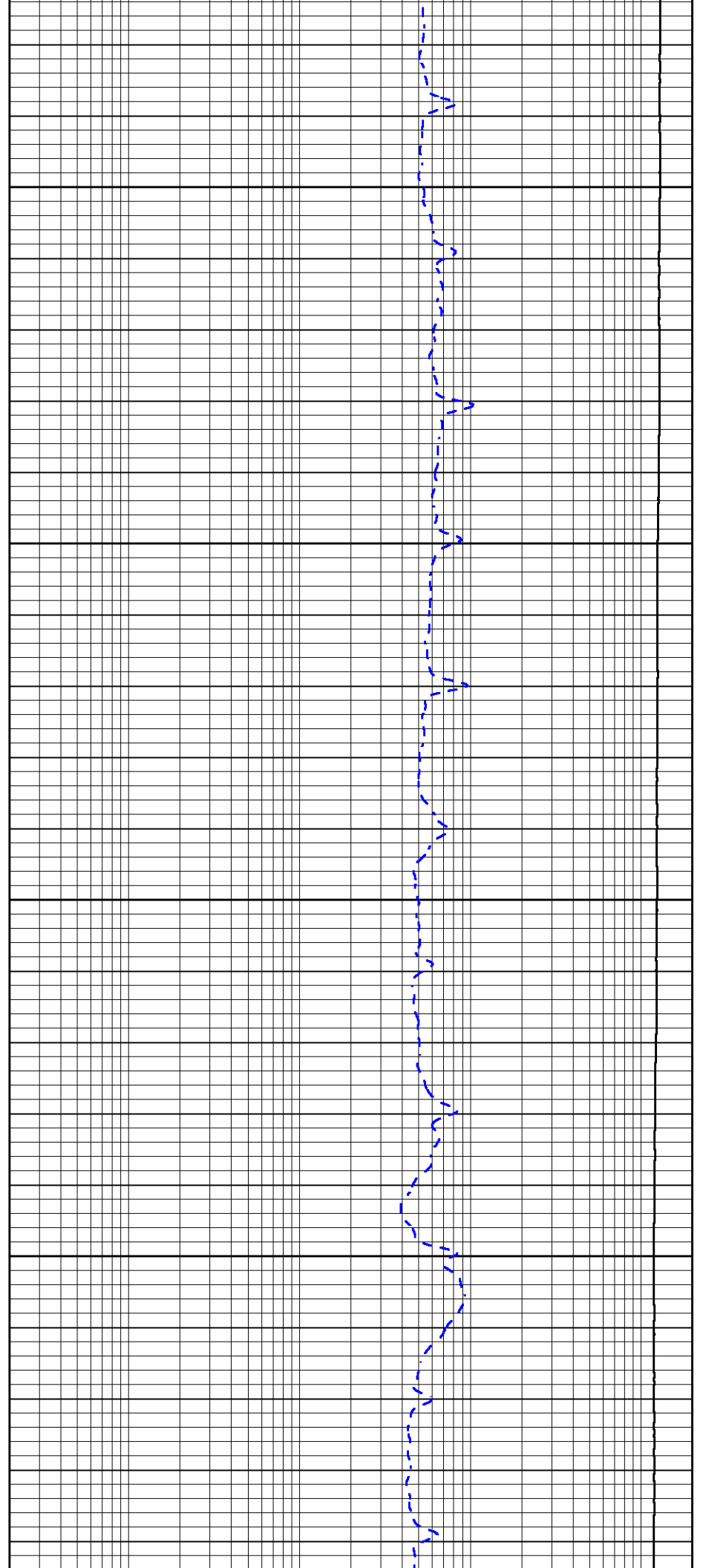


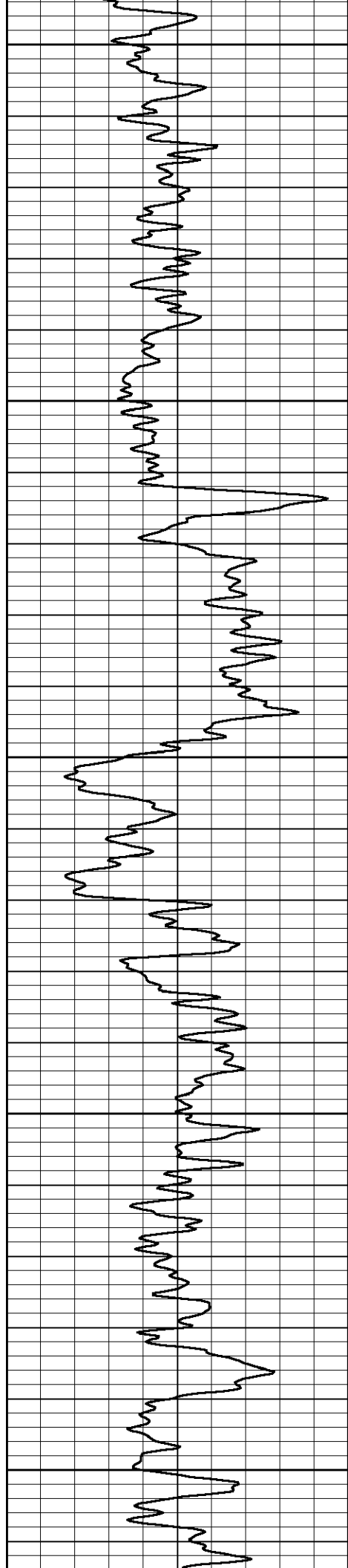
600

650

700

750





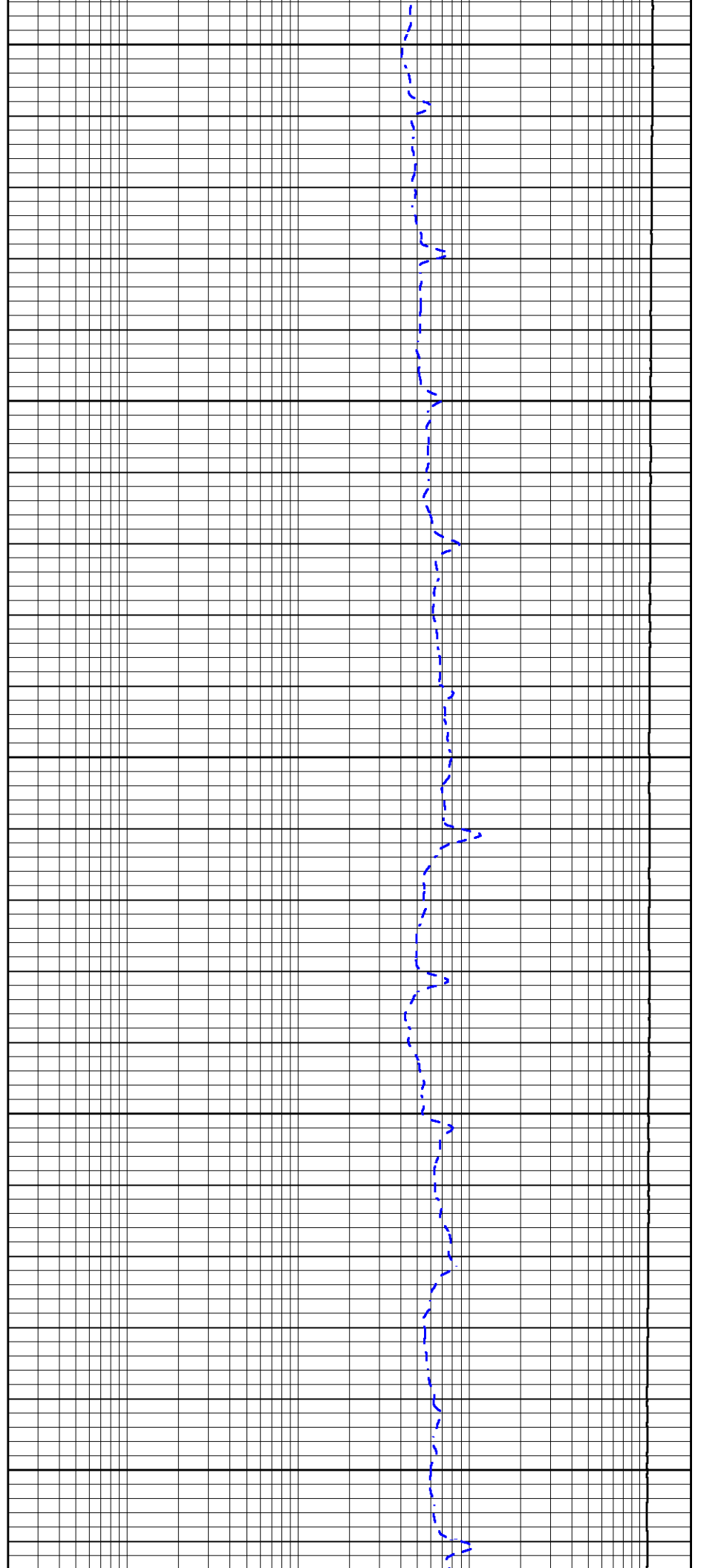
800

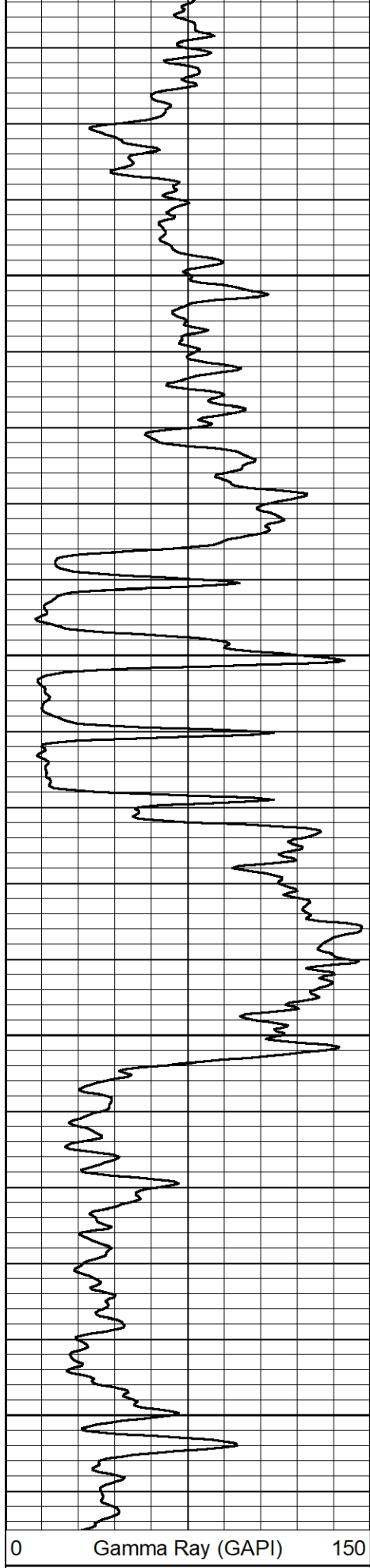
850

900

950

1000





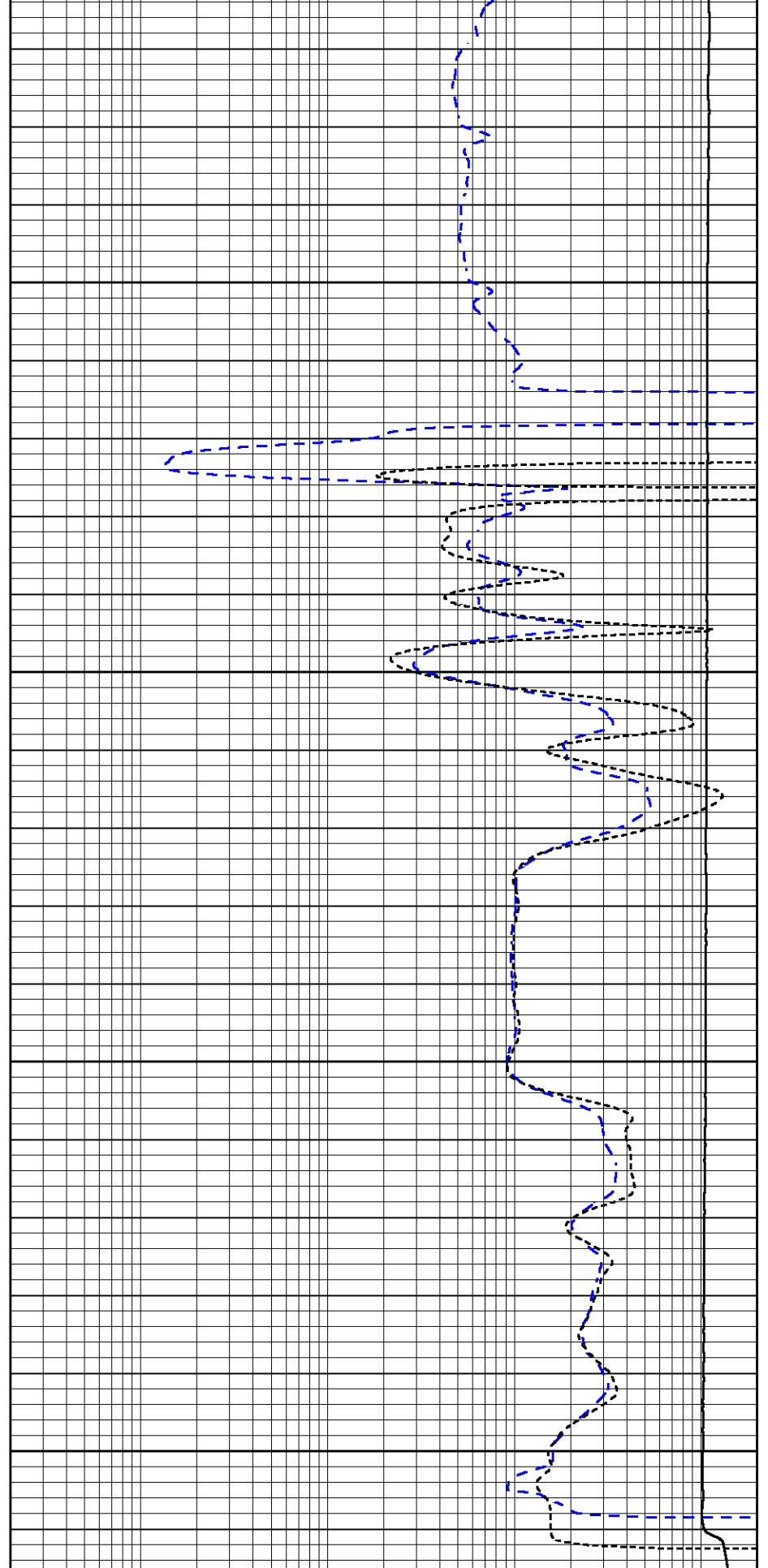
1050

1100

1150

1200

0 Gamma Ray (GAPI) 150



0.2 Deep Resistivity (Ohm-m) 2000

0.2 Medium Resistivity (Ohm-m) 2000

10000 Line Tension (lb) 0



REPEAT SECTION

REPEAT PASS

Database File b&I_jackson 31.db
 Dataset Pathname dil/pass1.1
 Presentation Format _dil
 Dataset Creation Fri Feb 28 13:04:47 2025
 Charted by Depth in Feet scaled 1:240

0 Gamma Ray (GAPI) 150

0.2 Deep Resistivity (Ohm-m) 2000

0.2 Medium Resistivity (Ohm-m) 2000

10000 Line Tension (lb) 0

