

BLEDSONE 14-19-5-44

QC: MJH

API # 125-09957 Loc. # 337244

FIELD NAME BALLYNEAL - #1970

Spud Date 6/5/2006

Basin DENVER - JULESBURG

Location SESW 19 5N 44W 6

Elevation GL (ft) 3793

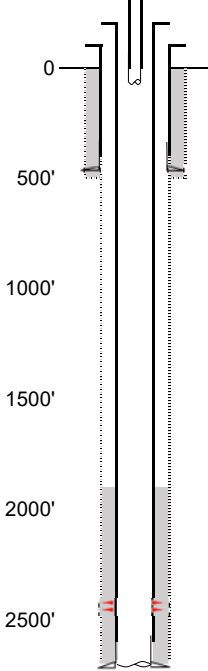
Elevation KB (ft) 3798

TD (ft) 2710

PBTD (ft) 2630

Formation Tops

EXISTING



Existing Casing and Cement Coverage

SURF: Size: 7", Hole Size: 9.875 in.
Depth: 473 ft., Weight: UNK
Cement: 160 sx, Top: 0 ft., Method: Vis

Deepest DWR w/in 1 mi. = 300'

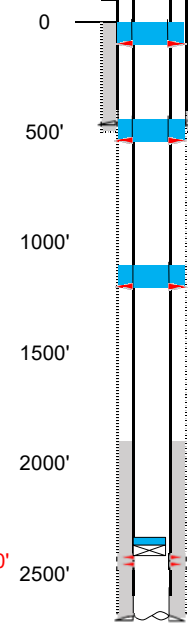
1ST, Size: 4.5", Hole Size: 6.25"
Depth: 2673', Weight: UNK
Cement: 75 sx, TOC: 1860', Method: CBL

tubing UNK
TOC = 1860' (CBL)
NBRR Perfs 2420' - 2456'
PBTD (ft) 2630'
TD (ft) 2710'

NIOBRARA - 2420'

PROPOSED

Depth Plug Placement



Perf at 100', pump 20 sx through perfs. Leave 10 sx inside to surface.
Perf at 522', pump 20 sx through perfs. Leave 10 sx inside. Tag above 422' reqd.
Perf at 1200', pump 20 sx through perfs. Leave 10 sx inside. Tag above 1100' reqd.

CBL Required

VERIFY TOC w/ CBL

Pressure test casing after setting CIBP.

CIBP w/ 2 sx @ 2345' (75' above top perf).

NIOBRARA - 2420'