

BLEDSON 16-19-5-44

QC: MJH

API # 125-09452 Loc. # 336813

FIELD NAME BALLYNEAL - #1970

Spud Date 9/5/2005

Basin DENVER - JULESBURG

Location SESE 19 5N 44W 6

Elevation GL (ft) 3753

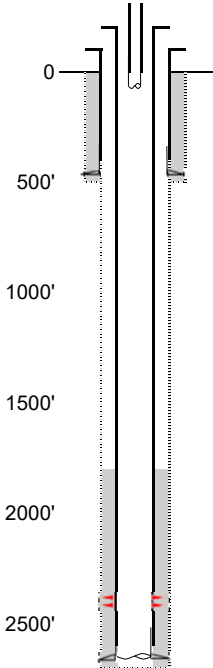
Elevation KB (ft) 3758

TD (ft) 2710

PBTD (ft) 2629

Formation Tops

EXISTING



Existing Casing and Cement Coverage

SURF: Size: 7", Hole Size: 9.875 in.
Depth: 477 ft., Weight: UNK
Cement: 193 sx, Top: 0 ft., Method: Vis

Deepest DWR w/in 1 mi. = 360'

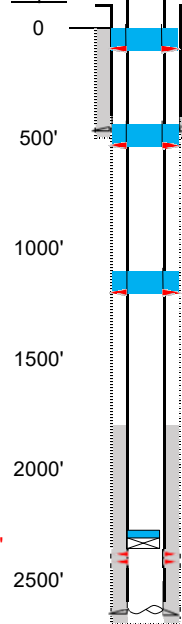
1ST, Size: 4.5", Hole Size: 6.25"
Depth: 2672', Weight: UNK
Cement: 75 sx, TOC: 1810', Method: CBL

tubing UNK
TOC = 1810' (CBL)
NBRR Perfs 2377' - 2411'
PBTD (ft) 2629'
TD (ft) 2710'

NIOBRARA - 2377'

PROPOSED

Depth Plug Placement



Perf at 100', pump 20 sx through perfs. Leave 10 sx inside to surface.

Perf at 527', pump 20 sx through perfs. Leave 10 sx inside. Tag above 427' reqd.

Perf at 1200', pump 20 sx through perfs. Leave 10 sx inside. Tag above 1100' reqd.

CBL Required

VERIFY TOC w/ CBL

Pressure test casing after setting CIBP.

CIBP w/ 2 sx @ 2302' (75' above top perf).

NIOBRARA - 2377'