

Flowline Abandonment Type:
Previously Abandoned 07/12/2018 - Prior to 1105.d.(2) requirements enacted 1/15/2020.

Flowlines

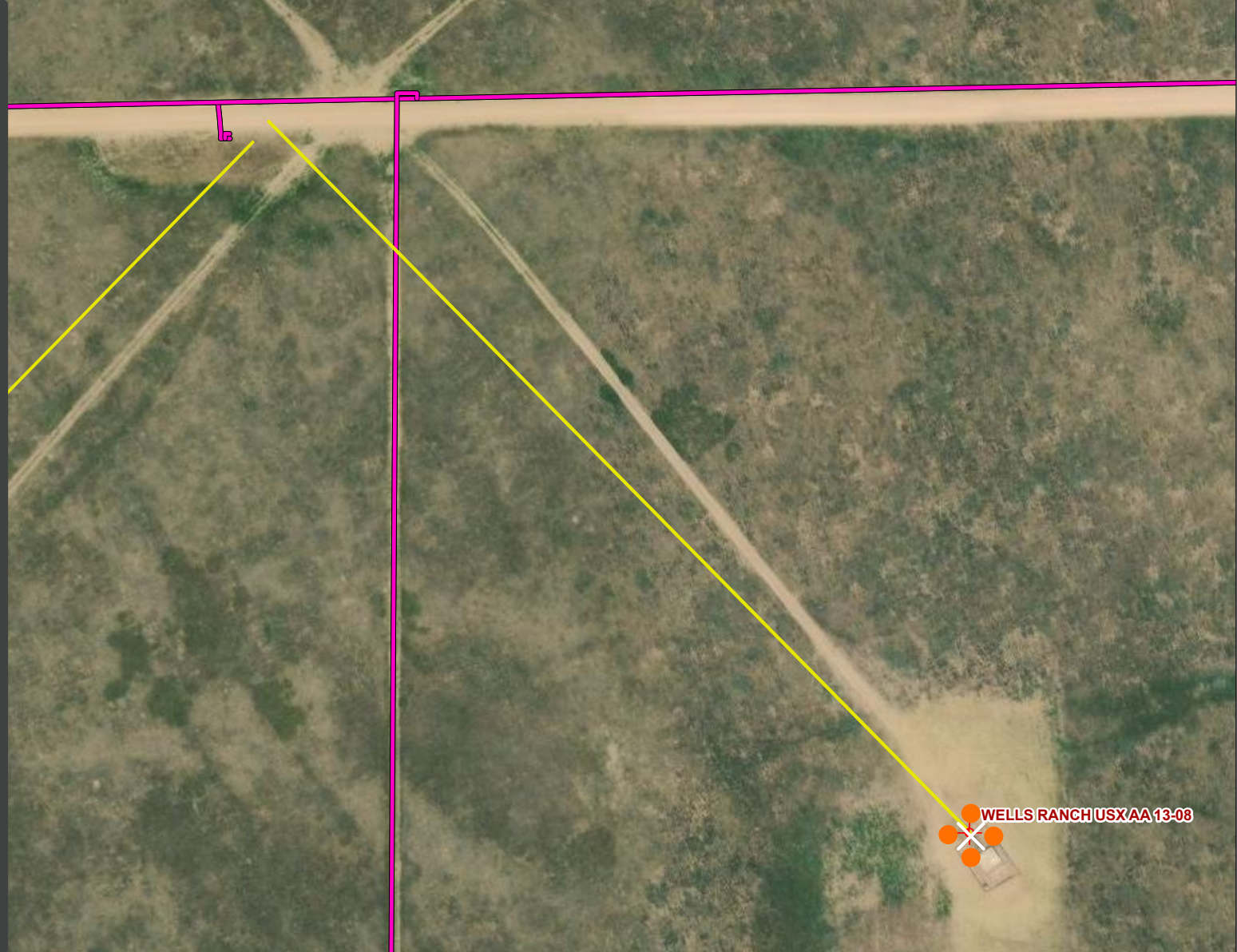
- Abandoned
- Active
- Out of Service
- Pre-Commissioned
- Removed
- Turned into Air Line
- Area of Conflict
(Proposed Abandon-in-Place Area)
- ✕ Proposed Soil Sample Location
- Field Screening Location

Wells

- Active Well
- ✕ Abandoned Location
- ✖ Plugged & Abandoned
- ✦ Producing
- ✕ Shut-In
- ✦ Temporarily Abandoned
- ✦ Waiting on Completion

Third-Party Pipelines

- — — —
- — — —
- NWI Wetlands



Well Latitude/Longitude: 40.4882940/-104.3779470
Flowline Length (ft): 977

Flowline Point A Latitude/Longitude: 40.4882919/-104.3779473
Flowline Point B Latitude/Longitude: 40.4902249/-104.3803831

Created by: CJENCK
Date: 4/21/2025

