

Flowline Abandonment Type:

Previously Abandoned 06/21/2017 - Prior to 1105.d.(2) requirements enacted 1/15/2020.

Flowlines

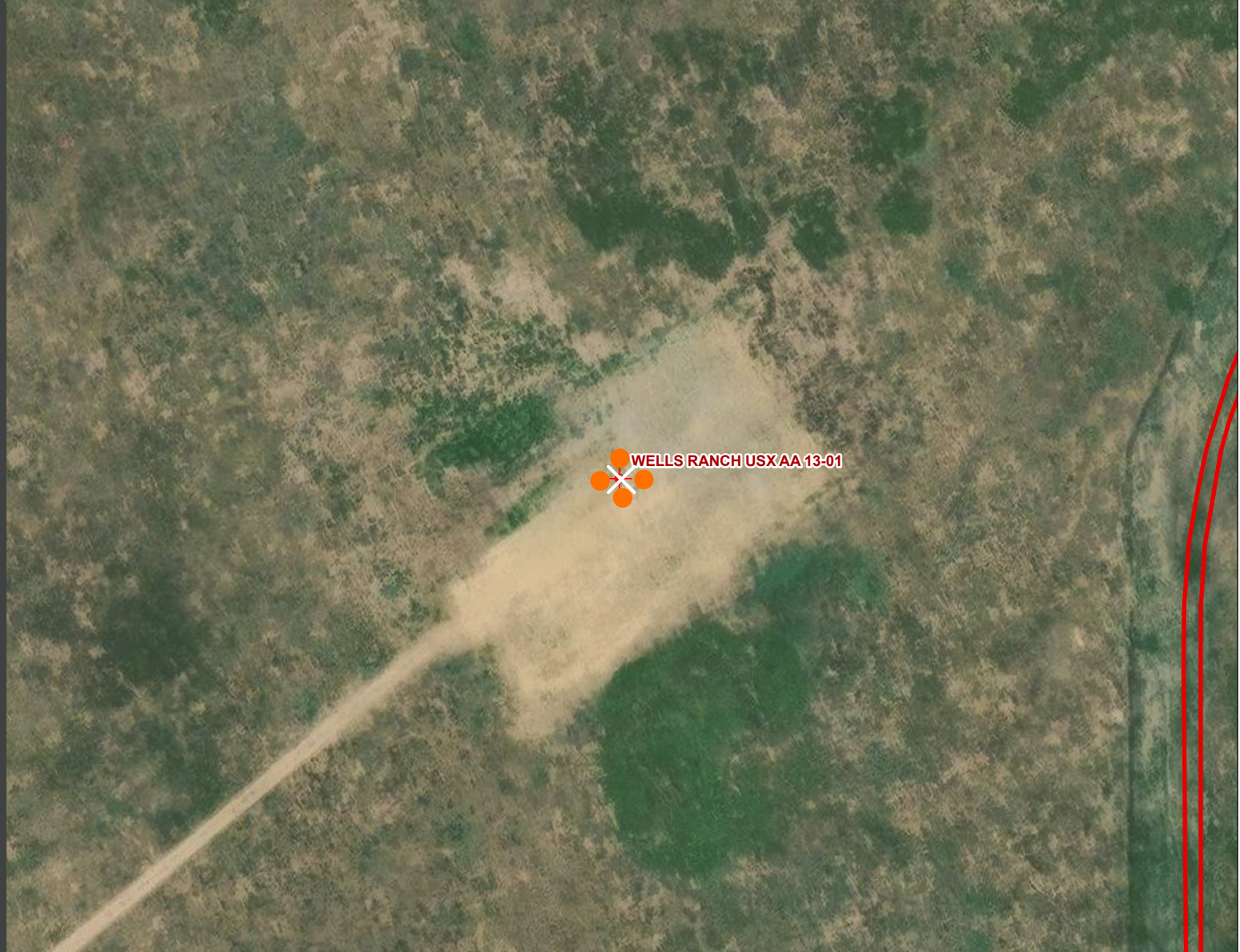
- Abandoned
- Active
- Out of Service
- Pre-Commissioned
- Removed
- Turned into Air Line
- Area of Conflict
(Proposed Abandon-in-Place Area)
- Proposed Soil Sample Location
- Field Screening Location

Wells

- Active Well
- Abandoned Location
- Plugged & Abandoned
- Producing
- Shut-In
- Temporarily Abandoned
- Waiting on Completion

Third-Party Pipelines

-
-
- NWI Wetlands



Well Latitude/Longitude: 40.4920020/-104.3773630

Flowline Length (ft): N/A

Flowline Point A Latitude/Longitude: N/A

Flowline Point A Latitude/Longitude: N/A

Created by: CJENCK

Date: 4/22/2025

