

FREMONT ENVIRONMENTAL INC.

March 31, 2025

Noble Energy, Inc –Knaub-64N65W 9SWSW (Facility)

Site Investigation

SWSW Sec. 9, T4N, R65W

40.3200328, -104.6737184

Weld County, Colorado

Fremont Project No. C024-021

Facility # 328257, Remediation #30788

Site Overview – Site History

The site consists of the former Knaub-64N65W 9SWSW (facility). A historical release was identified at the separator (SEP), and produced water vault (PWV) during decommissioning activities on February 12, 2024. A comprehensive site investigation was undertaken in November 2024 to define the magnitude and extent of soil impacts. Soil impacts will be removed via excavation at and adjacent to the former impacted locations. The proposed dimensions of the AST/PWV excavation extent are estimated to be 50'x40'x8'deep and the SEP excavation is estimated to measure 50'x60'x8' deep. Groundwater was encountered at approximately six feet below ground surface (bgs) during the site investigation.

Conceptual Site Model*

*Data presented represents the most recent sampling event

- **Land Use** – Residential
- **Lithology (USCS)** – SP, and SW
- **Potential Receptors within ¼ mile** – Riverine 70ft N; 0.21mi NE; 0.22mi S, Emergent wetland 275ft NW, Farm Structures 0.09/0.19mi NE; 0.18/0.22mi NW; 0.23/0.25mi SW, Residential Structures 0.20mi NE; 0.21mi NW; 0.25mi SW
- **Groundwater Encountered** – yes
- **Estimated Depth to Groundwater** – six feet
- **Impacted Media and Excavation Extent** – Soil and groundwater – 50'x40'x8'deep (AST/PWV), 50'x60'x8' deep (SEP)
- **Volume of Impacts Removed** – Impacts remain in situ
- **Waste Type** – Non-hazardous

Contaminants of Concern (COC)

The laboratory data indicate organic and inorganic soil constituents exceed the ECMC Table 915-1 standards in 12 of the 36 in samples collected during the November 20, 2024 supplemental site investigation conducted at and adjacent to the former AST, PWV, and SEP locations. COCs include benzene, ethylbenzene, xylenes, naphthalene, 1,2,4-and-1,3,5 TMBs, TPH, 1-and-2 methyl-naphthalene, pyrene, pH, SAR, boron, barium, lead, selenium, and arsenic. The soil analytical data are summarized in Tables 2-5.

Groundwater encountered at approximately six feet bgs. Insufficient water column during the installation of wells to sample ground water. Groundwater COCs include benzene, and 1,2,4 TMB. Table 915-1 inorganic constituents total dissolved solids (TDS), chloride, and sulfate will be added to the sampling plan when monitoring wells are installed following the excavation of soil impacts.

Remedial Actions

The source will be excavated, and confirmation soil samples will be collected and analyzed for the full Table 915 suite of constituents. Groundwater sample(s) will be collected for Table 915-1 organic constituents in groundwater (BTEX, 1,2,4 Trimethylbenzene, 1,3,5 Trimethylbenzene, and Naphthalene) and Table 915-1 inorganic constituents total dissolved solids (TDS), chloride, and sulfate. Should no additional active remediation be required following source removal at the location, a no further action (NFA) determination will be requested within 90 days following laboratory confirmation of the removal of impacted soils concerning the applicable Table 915-1 screening levels at the site.

If residual groundwater impacts are observed, an NFA will be requested once four consecutive quarters of groundwater sampling have been completed and reported at the location with concentrations of Table 915 constituents below regulatory limits. As needed, soil and/or groundwater remediation plans will be developed and submitted to ECMC in a supplemental Form 27.

Remarks

The discussion and conclusions contained in this report represent our professional opinions. These opinions are based on currently available information and are arrived at in accordance with currently accepted hydrogeologic and engineering practices at this time and location. Other than this, no warranty is implied or intended.

This report was prepared by **FREMONT ENVIRONMENTAL INC.**



3/31/25

Date _____

Stanley Gilbert

Environmental Scientist

Reviewed by:



3/31/25

Date _____

Ethan D. Black, P.G.

Geologist

Attachments:

Tables

Figures

Boring Logs

Appendix :

Appendix A: Groundwater Sampling Plan

ATTACHMENTS

TABLE 1
FIELD DATA SUMMARY TABLE
NOBLE 100322
KNAUB-64N65W 9SWSW, WELD COUNTY, COLORADO
REM # 30788

Sample ID	Sample Date	Depth (ft)	GPS Data Latitude/Longitude		PDOP Value	VOC Concentration (ppm)
AST 3'	01/29/2024	3.0 Ft	40.3200380	-104.673811	-	33.2
PWV FLOOR 3'	01/29/2024	3.0 Ft	40.3200328	-104.673718	-	538.1
SEP DL 3'	01/29/2024	3.0 Ft	40.3201721	-104.673825	-	2510
PWV SBCEN - 12FT	11/20/2024	12 Ft	40.3200332	-104.673719	1.60	0.0
PWV SBCEN - 6FT	11/20/2024	6 Ft	40.3200332	-104.673719	1.60	162.6
PWV SBE - 12FT	11/20/2024	12 Ft	40.3200298	-104.673678	1.30	0.0
PWV SBE - 6FT	11/20/2024	6 Ft	40.3200298	-104.673678	1.30	0.0
PWV SBN - 12FT	11/20/2024	12 Ft	40.3200612	-104.673713	-	0.0
PWV SBN - 6FT	11/20/2024	6 Ft	40.3200612	-104.673713	-	101.6
PWV SBS - 12FT	11/20/2024	12 Ft	40.3200064	-104.673721	1.30	0.0
PWV SBS - 6FT	11/20/2024	6 Ft	40.3200064	-104.673721	1.30	227.3
PWV SBS01 - 12FT	11/20/2024	12 Ft	40.3199789	-104.673729	1.10	0.0
PWV SBS01 - 6FT	11/20/2024	6 Ft	40.3199789	-104.673729	1.10	0.0
PWV SBW - 10FT	11/20/2024	10 Ft	40.3200360	-104.673746	-	188.8
PWV SBW - 12FT	11/20/2024	12 Ft	40.3200360	-104.673746	-	2.0
PWV SBW01 - 12FT	11/20/2024	12 Ft	40.3200435	-104.673810	0.90	0.0
PWV SBW01 - 5FT	11/20/2024	5 Ft	40.3200435	-104.673810	0.90	0.0
SEP SBCEN - 11FT	11/20/2024	11 Ft	40.3201729	-104.673825	0.90	704.2
SEP SBCEN - 12FT	11/20/2024	12 Ft	40.3201729	-104.673825	0.90	13.1
SEP SBN - 12FT	11/20/2024	12 Ft	40.3201968	-104.673824	0.90	0.0
SEP SBN - 6FT	11/20/2024	6 Ft	40.3201968	-104.673824	0.90	154
SEP SBN01 - 12FT	11/20/2024	12 Ft	40.3202550	-104.673823	0.90	0.0
SEP SBN01 - 6FT	11/20/2024	6 Ft	40.3202550	-104.673823	0.90	0.0

TABLE 1
FIELD DATA SUMMARY TABLE
NOBLE 100322
KNAUB-64N65W 9SWSW, WELD COUNTY, COLORADO
REM # 30788

Sample ID	Sample Date	Depth (ft)	GPS Data Latitude/Longitude		PDOP Value	VOC Concentration (ppm)
SEP SBS - 12FT	11/20/2024	12 Ft	40.3201410	-104.673825	-	0.0
SEP SBS - 6FT	11/20/2024	6 Ft	40.3201410	-104.673825	-	150.9
SEP SBS01 - 12FT	11/20/2024	12 Ft	40.3201199	-104.673824	-	0.0
SEP SBS01 - 7FT	11/20/2024	7 Ft	40.3201199	-104.673824	-	340.5
SEP SBW - 12FT	11/20/2024	12 Ft	40.3201852	-104.673864	-	2.9
SEP SBW - 7FT	11/20/2024	7 Ft	40.3201852	-104.673864	-	765.3
SEP SBW01 - 12FT	11/20/2024	12 Ft	40.3201702	-104.673918	-	7.4
SEP SBW01 - 6FT	11/20/2024	6 Ft	40.3201702	-104.673918	-	223.8
PWV SBN01 - 12Ft	11/25/2024	12Ft	40.3201366	-104.673702	-	0.0
PWV SBN01 - 6Ft	11/25/2024	6Ft	40.3201366	-104.673702	-	0.0
SEP SBE - 11Ft	11/25/2024	11Ft	40.3201844	-104.673786	0.90	29.0
SEP SBE - 7Ft	11/25/2024	7Ft	40.3201844	-104.673786	0.90	496.7
SEP SBE01 - 12Ft	11/25/2024	12Ft	40.3201851	-104.673720	-	0.0
SEP SBE01 - 4Ft	11/25/2024	4Ft	40.3201851	-104.673720	-	0.0
SEP SBW02 - 12Ft	11/25/2024	12Ft	40.3201686	-104.673949	1.00	0.0
SEP SBW02 - 6Ft	11/25/2024	6Ft	40.3201686	-104.673949	1.00	6.7
BKG01	11/25/2024	3Ft, 8Ft	40.3201148	-104.673568	-	0.0
BKG02	11/25/2024	3Ft, 8Ft	40.3202644	-104.673594	-	0.0
BKG03	11/25/2024	3Ft, 8Ft	40.3203975	-104.673792	-	0.0
BKG04	11/25/2024	3Ft, 8Ft	40.3200235	-104.673966	-	0.0
BKG05	11/25/2024	3Ft, 8Ft	40.3202502	-104.673963	1.40	0.0

1. Global Positioning System (GPS) data is provided in decimal degrees using North American Datum (NAD) 83 UTMZone 13 North.

2. Volatile organic compound (VOC) concentrations are measured in the field using a photoionization detector (PID).

PDOP = Position Dilution of Precision

ppm = Parts per million

in. = Inches

ft. = Feet

bgs = Below ground surface

TABLE 2
SUMMARY OF VOLATILE ORGANIC SOIL CHEMISTRY DATA
NOBLE 100322
KNAUB-64N65W 9SWSW, WELD COUNTY, COLORADO
REM # 30788

Sample ID	Sample Date	Depth (ft)	Benzene (mg/kg)	Toluene (mg/kg)	Ethyl-Benzene (mg/kg)	Xylenes (mg/kg)	1,2,4-Trimethyl-Benzene (mg/kg)	1,3,5-Trimethyl-Benzene (mg/kg)	Naphthalene (mg/kg)	TPH (mg/kg)	TPH GRO (mg/kg)	TPH DRO (mg/kg)	TPH ORO (mg/kg)
ECMC Table 915-1 Limits (Residential SSL)			1.2	490	5.8	58	30	27	2	500	500**		
ECMC Table 915-1 Limits (Protection of Groundwater SSL)			0.0026	0.69	0.78	9.9	0.0081	0.0087	0.0038	500	500**		
AST 3'	01/29/2024	3.0 Ft	<0.0020	<0.0050	<0.0050	<0.010	0.0052	<0.0050	<0.0038	<500	<0.50	<50	<50
PWV FLOOR 3'	01/29/2024	3.0 Ft	<0.0020	<0.0050	<0.0050	0.012	<0.0050	0.0078	<0.0038	<500	2	<50	<50
SEP DL 3'	01/29/2024	3.0 Ft	<0.0020	<0.0050	<0.0050	1.5	22	20	<0.0038	1410	710	700	<50
PWV SBCEN - 12FT	11/20/2024	12 Ft	<0.0020	<0.0050	<0.0050	<0.010	<0.0050	<0.0050	<0.0038	<500	<0.50	<50	<50
PWV SBCEN - 6FT	11/20/2024	6 Ft	<0.0020	<0.0050	0.066	0.34	1.1	<0.0050	0.048	20	20	<50	<50
PWV SBE - 12FT	11/20/2024	12 Ft	<0.0020	<0.0050	<0.0050	<0.010	<0.0050	<0.0050	<0.0038	<500	<0.50	<50	<50
PWV SBE - 6FT	11/20/2024	6 Ft	<0.0020	<0.0050	<0.0050	<0.010	<0.0050	<0.0050	<0.0038	<500	<0.50	<50	<50
PWV SBN - 12FT	11/20/2024	12 Ft	<0.0020	<0.0050	<0.0050	<0.010	<0.0050	<0.0050	<0.0038	<500	<0.50	<50	<50
PWV SBN - 6FT	11/20/2024	6 Ft	<0.0020	<0.0050	<0.0050	<0.010	<0.0050	<0.0050	<0.0038	3.3	3.3	<50	<50
PWV SBS - 12FT	11/20/2024	12 Ft	<0.0020	<0.0050	<0.0050	<0.010	<0.0050	<0.0050	<0.0038	<500	<0.50	<50	<50
PWV SBS - 6FT	11/20/2024	6 Ft	<0.0020	<0.0050	0.032	0.11	0.6	0.05	0.018	188.1	8.1	180	<50
PWV SBS01 - 12FT	11/20/2024	12 Ft	<0.0020	<0.0050	<0.0050	<0.010	<0.0050	<0.0050	<0.0038	<500	<0.50	<50	<50
PWV SBS01 - 6FT	11/20/2024	6 Ft	<0.0020	<0.0050	<0.0050	<0.010	<0.0050	<0.0050	<0.0038	120	<0.50	120	<50
PWV SBW - 10FT	11/20/2024	10 Ft	0.2	<0.0050	0.37	<0.010	0.099	<0.0050	0.047	68	68	<50	<50
PWV SBW - 12FT	11/20/2024	12 Ft	<0.0020	<0.0050	<0.0050	<0.010	<0.0050	<0.0050	<0.0038	<500	<0.50	<50	<50
PWV SBW01 - 12FT	11/20/2024	12 Ft	<0.0020	<0.0050	<0.0050	<0.010	<0.0050	<0.0050	<0.0038	<500	<0.50	<50	<50
PWV SBW01 - 5FT	11/20/2024	5 Ft	<0.0020	<0.0050	<0.0050	<0.010	<0.0050	<0.0050	<0.0038	200	<0.50	200	<50

TABLE 2
SUMMARY OF VOLATILE ORGANIC SOIL CHEMISTRY DATA
NOBLE 100322
KNAUB-64N65W 9SWSW, WELD COUNTY, COLORADO
REM # 30788

Sample ID	Sample Date	Depth (ft)	Benzene (mg/kg)	Toluene (mg/kg)	Ethyl-Benzene (mg/kg)	Xylenes (mg/kg)	1,2,4-Trimethyl-Benzene (mg/kg)	1,3,5-Trimethyl-Benzene (mg/kg)	Naphthalene (mg/kg)	TPH (mg/kg)	TPH GRO (mg/kg)	TPH DRO (mg/kg)	TPH ORO (mg/kg)
ECMC Table 915-1 Limits (Residential SSL)			1.2	490	5.8	58	30	27	2	500	500**		
ECMC Table 915-1 Limits (Protection of Groundwater SSL)			0.0026	0.69	0.78	9.9	0.0081	0.0087	0.0038	500	500**		
SEP SBCEN - 11FT	11/20/2024	11 Ft	<0.20	<0.50	1.4	26	11	8	0.61	530	530	<50	<50
SEP SBCEN - 12FT	11/20/2024	12 Ft	<0.0020	<0.0050	<0.0050	<0.010	<0.0050	<0.0050	<0.0038	<500	<0.50	<50	<50
SEP SBN - 12FT	11/20/2024	12 Ft	<0.0020	<0.0050	<0.0050	<0.010	<0.0050	<0.0050	<0.0038	<500	<0.50	<50	<50
SEP SBN - 6FT	11/20/2024	6 Ft	<0.0020	<0.0050	0.011	0.089	0.45	0.34	0.026	20	20	<50	<50
SEP SBN01 - 12FT	11/20/2024	12 Ft	<0.0020	<0.0050	<0.0050	<0.010	<0.0050	<0.0050	<0.0038	<500	<0.50	<50	<50
SEP SBN01 - 6FT	11/20/2024	6 Ft	<0.0020	<0.0050	<0.0050	<0.010	<0.0050	<0.0050	<0.0038	<500	<0.50	<50	<50
SEP SBS - 12FT	11/20/2024	12 Ft	<0.0020	<0.0050	<0.0050	<0.010	<0.0050	<0.0050	<0.0038	<500	<0.50	<50	<50
SEP SBS - 6FT	11/20/2024	6 Ft	0.51	17	6.8	110	48	19	5.9	1700	1700	<50	<50
SEP SBS01 - 12FT	11/20/2024	12 Ft	<0.0020	<0.0050	<0.0050	<0.010	<0.0050	<0.0050	<0.0038	<500	<0.50	<50	<50
SEP SBS01 - 7FT	11/20/2024	7 Ft	<0.0020	<0.0050	0.1	1.4	1.9	<0.0050	0.063	13	13	<50	<50
SEP SBW - 12FT	11/20/2024	12 Ft	<0.0020	<0.0050	<0.0050	<0.010	<0.0050	<0.0050	<0.0038	<500	<0.50	<50	<50
SEP SBW - 7FT	11/20/2024	7 Ft	<0.20	<0.50	8.5	110	49	36	1.6	2400	2400	<50	<50
SEP SBW01 - 12FT	11/20/2024	12 Ft	<0.0020	<0.0050	<0.0050	<0.010	<0.0050	<0.0050	<0.0038	<500	<0.50	<50	<50
SEP SBW01 - 6FT	11/20/2024	6 Ft	<0.0020	<0.0050	4.5	0.69	34	20	0.079	1300	1300	<50	<50
PWV SBN01 - 12Ft	11/25/2024	12Ft	<0.0020	<0.0050	<0.0050	<0.010	<0.0050	<0.0050	<0.0038	<500	<0.50	<50	<50
PWV SBN01 - 6Ft	11/25/2024	6Ft	<0.0020	<0.0050	<0.0050	<0.010	<0.0050	<0.0050	<0.0038	<500	<0.50	<50	<50
SEP SBE - 11Ft	11/25/2024	11Ft	<0.0020	<0.0050	<0.0050	<0.010	<0.0050	<0.0050	<0.0038	<500	<0.50	<50	<50
SEP SBE - 7Ft	11/25/2024	7Ft	<0.0020	<0.0050	0.018	0.13	26	2.7	<0.0038	1120	470	650	<50
SEP SBE01 - 12Ft	11/25/2024	12Ft	<0.0020	<0.0050	<0.0050	<0.010	<0.0050	<0.0050	<0.0038	<500	<0.50	<50	<50
SEP SBE01 - 4Ft	11/25/2024	4Ft	<0.0020	<0.0050	<0.0050	<0.010	<0.0050	<0.0050	<0.0038	<500	<0.50	<50	<50
SEP SBW02 - 12Ft	11/25/2024	12Ft	<0.0020	<0.0050	<0.0050	<0.010	<0.0050	<0.0050	<0.0038	<500	<0.50	<50	<50
SEP SBW02 - 6Ft	11/25/2024	6Ft	<0.0020	<0.0050	<0.0050	<0.010	<0.0050	<0.0050	<0.0038	<500	<0.50	<50	<50

- Bold values exceed the ECMC Table 915-1 limit(s)
 - Red & blue highlighted soil analytical values indicate an exceedance of the referenced soil screening level (SSL)
 - * Indicates laboratory minimum detection limit in excess of SSL
 - ** Summation of GRO+DRO+ORO must be less than 500 mg/kg
- (<) = Analytical result is less than the indicated laboratory reporting limit.
 TPH-GRO = Total petroleum hydrocarbons - gasoline range organics
 TPH-DRO = Total petroleum hydrocarbons - diesel range organics
 TPH-ORO = Total petroleum hydrocarbons - oil range organics
 mg/kg = Milligrams per kilogram
 ft. = Feet
 bgs = Below ground surface
 NA - Not analyzed

TABLE 3
SUMMARY OF POLYCYCLIC AROMATIC HYDROCARBON SOIL CHEMISTRY DATA
NOBLE 100322
KNAUB-64N65W 95WSW, WELD COUNTY, COLORADO
REM # 30788

Sample ID	Sample Date	Depth (ft)	Acenaphthene (mg/kg)	Anthracene (mg/kg)	Benzo (a) Anthracene (mg/kg)	Benzo (a) Pyrene (mg/kg)	Benzo (b) Fluoranthene (mg/kg)	Benzo (k) Fluoranthene (mg/kg)	Chrysene (mg/kg)	Dibenzo (a,h) Anthracene (mg/kg)	Fluoranthene (mg/kg)	Fluorene (mg/kg)	Indeno (1,2,3- cd) Pyrene (mg/kg)	Pyrene (mg/kg)	1-Methyl - Naphthalene (mg/kg)	2-Methyl- Naphthalene (mg/kg)
ECMC Table 915-1 Limits (Residential SSL)			360	1800	1.1	0.11	1.1	11	110	0.11	240	240	1.1	180	18	24
ECMC Table 915-1 Limits (Protection of Groundwater SSL)			0.55	5.8	0.011	0.24	0.3	2.9	9	0.096	8.9	0.54	0.98	1.3	0.006	0.019
AST 3'	01/29/2024	3.0 Ft	<0.00500	<0.00500	<0.00500	<0.00500	<0.00500	<0.00500	<0.00500	<0.00500	<0.00500	<0.00500	<0.00500	<0.00500	<0.00500	<0.00500
PWV FLOOR 3'	01/29/2024	3.0 Ft	<0.00500	<0.00500	<0.00500	<0.00500	<0.00500	<0.00500	<0.00500	<0.00500	<0.00500	<0.00500	<0.00500	<0.00500	0.0128	0.0334
SEP DL 3'	01/29/2024	3.0 Ft	<0.00500	<0.00500	<0.00500	<0.00500	<0.00500	<0.00500	<0.00500	<0.00500	0.0054	<0.00500	<0.00500	<0.00500	0.951	1.71
PWV SBCEN - 12FT	11/20/2024	12 Ft	<0.00500	<0.00500	<0.00500	<0.00500	<0.00500	<0.00500	<0.00500	<0.00500	<0.00500	<0.00500	<0.00500	<0.00500	<0.00500	<0.00500
PWV SBCEN - 6FT	11/20/2024	6 Ft	<0.00500	<0.00500	<0.00500	<0.00500	<0.00500	<0.00500	<0.00500	<0.00500	<0.00500	<0.00500	<0.00500	<0.00500	0.0748	0.172
PWV SBE - 12FT	11/20/2024	12 Ft	<0.00500	<0.00500	<0.00500	<0.00500	<0.00500	<0.00500	<0.00500	<0.00500	<0.00500	<0.00500	<0.00500	<0.00500	<0.00500	<0.00500
PWV SBE - 6FT	11/20/2024	6 Ft	<0.00500	<0.00500	<0.00500	<0.00500	<0.00500	<0.00500	<0.00500	<0.00500	<0.00500	<0.00500	<0.00500	<0.00500	<0.00500	<0.00500
PWV SBN - 12FT	11/20/2024	12 Ft	<0.00500	<0.00500	<0.00500	<0.00500	<0.00500	<0.00500	<0.00500	<0.00500	<0.00500	<0.00500	<0.00500	<0.00500	<0.00500	<0.00500
PWV SBN - 6FT	11/20/2024	6 Ft	<0.00500	<0.00500	<0.00500	<0.00500	<0.00500	<0.00500	<0.00500	<0.00500	<0.00500	<0.00500	<0.00500	<0.00500	<0.00500	<0.00500
PWV SBS - 12FT	11/20/2024	12 Ft	<0.00500	<0.00500	<0.00500	<0.00500	<0.00500	<0.00500	<0.00500	<0.00500	<0.00500	<0.00500	<0.00500	<0.00500	<0.00500	<0.00500
PWV SBS - 6FT	11/20/2024	6 Ft	<0.00500	<0.00500	<0.00500	<0.00500	<0.00500	<0.00500	<0.00500	<0.00500	<0.00500	<0.00500	<0.00500	<0.00500	0.0236	0.0564
PWV SBS01 - 12FT	11/20/2024	12 Ft	<0.00500	<0.00500	<0.00500	<0.00500	<0.00500	<0.00500	<0.00500	<0.00500	<0.00500	<0.00500	<0.00500	<0.00500	<0.00500	<0.00500
PWV SBS01 - 6FT	11/20/2024	6 Ft	<0.00500	<0.00500	<0.00500	<0.00500	<0.00500	<0.00500	<0.00500	<0.00500	<0.00500	<0.00500	<0.00500	<0.00500	<0.00500	<0.00500
PWV SBW - 10FT	11/20/2024	10 Ft	<0.00500	<0.00500	<0.00500	<0.00500	<0.00500	<0.00500	<0.00500	<0.00500	<0.00500	<0.00500	<0.00500	<0.00500	0.0243	0.0593
PWV SBW - 12FT	11/20/2024	12 Ft	<0.00500	<0.00500	<0.00500	<0.00500	<0.00500	<0.00500	<0.00500	<0.00500	<0.00500	<0.00500	<0.00500	<0.00500	<0.00500	<0.00500
PWV SBW01 - 12FT	11/20/2024	12 Ft	<0.00500	<0.00500	<0.00500	<0.00500	<0.00500	<0.00500	<0.00500	<0.00500	<0.00500	<0.00500	<0.00500	<0.00500	<0.00500	<0.00500
PWV SBW01 - 5FT	11/20/2024	5 Ft	<0.00500	<0.00500	<0.00500	<0.00500	<0.00500	<0.00500	<0.00500	<0.00500	<0.00500	<0.00500	<0.00500	<0.00500	<0.00500	<0.00500
SEP SBCEN - 11FT	11/20/2024	11 Ft	<0.00500	<0.00500	<0.00500	<0.00500	<0.00500	<0.00500	<0.00500	<0.00500	<0.00500	0.0138	<0.00500	<0.00500	0.138	0.308
SEP SBCEN - 12FT	11/20/2024	12 Ft	<0.00500	<0.00500	<0.00500	<0.00500	<0.00500	<0.00500	<0.00500	<0.00500	<0.00500	<0.00500	<0.00500	<0.00500	<0.00500	<0.00500
SEP SBN - 12FT	11/20/2024	12 Ft	<0.00500	<0.00500	<0.00500	<0.00500	<0.00500	<0.00500	<0.00500	<0.00500	<0.00500	<0.00500	<0.00500	<0.00500	<0.00500	<0.00500
SEP SBN - 6FT	11/20/2024	6 Ft	<0.00500	<0.00500	<0.00500	<0.00500	<0.00500	<0.00500	<0.00500	<0.00500	<0.00500	<0.00500	<0.00500	<0.00500	0.0796	0.202

TABLE 3
SUMMARY OF POLYCYCLIC AROMATIC HYDROCARBON SOIL CHEMISTRY DATA
NOBLE 100322
KNAUB-64N65W 95WSW, WELD COUNTY, COLORADO
REM # 30788

Sample ID	Sample Date	Depth (ft)	Acenaphthene (mg/kg)	Anthracene (mg/kg)	Benzo (a) Anthracene (mg/kg)	Benzo (a) Pyrene (mg/kg)	Benzo (b) Fluoranthene (mg/kg)	Benzo (k) Fluoranthene (mg/kg)	Chrysene (mg/kg)	Dibenzo (a,h) Anthracene (mg/kg)	Fluoranthene (mg/kg)	Fluorene (mg/kg)	Indeno (1,2,3-cd) Pyrene (mg/kg)	Pyrene (mg/kg)	1-Methyl - Naphthalene (mg/kg)	2-Methyl- Naphthalene (mg/kg)
ECMC Table 915-1 Limits (Residential SSL)			360	1800	1.1	0.11	1.1	11	110	0.11	240	240	1.1	180	18	24
ECMC Table 915-1 Limits (Protection of Groundwater SSL)			0.55	5.8	0.011	0.24	0.3	2.9	9	0.096	8.9	0.54	0.98	1.3	0.006	0.019
SEP SBN01 - 12FT	11/20/2024	12 Ft	<0.00500	<0.00500	<0.00500	<0.00500	<0.00500	<0.00500	<0.00500	<0.00500	<0.00500	<0.00500	<0.00500	<0.00500	<0.00500	<0.00500
SEP SBN01 - 6FT	11/20/2024	6 Ft	<0.00500	<0.00500	<0.00500	<0.00500	<0.00500	<0.00500	<0.00500	<0.00500	<0.00500	<0.00500	<0.00500	<0.00500	<0.00500	<0.00500
SEP SBS - 12FT	11/20/2024	12 Ft	<0.00500	<0.00500	<0.00500	<0.00500	<0.00500	<0.00500	<0.00500	<0.00500	<0.00500	<0.00500	<0.00500	<0.00500	<0.00500	<0.00500
SEP SBS - 6FT	11/20/2024	6 Ft	<0.00500	<0.00500	<0.00500	<0.00500	<0.00500	<0.00500	<0.00500	<0.00500	<0.00500	0.0477	<0.00500	<0.00500	0.423	0.824
SEP SBS01 - 12FT	11/20/2024	12 Ft	<0.00500	<0.00500	<0.00500	<0.00500	<0.00500	<0.00500	<0.00500	<0.00500	<0.00500	<0.00500	<0.00500	<0.00500	<0.00500	<0.00500
SEP SBS01 - 7FT	11/20/2024	7 Ft	<0.00500	<0.00500	<0.00500	<0.00500	<0.00500	<0.00500	<0.00500	<0.00500	<0.00500	0.00606	<0.00500	<0.00500	0.0306	0.0460
SEP SBW - 12FT	11/20/2024	12 Ft	<0.00500	<0.00500	<0.00500	<0.00500	<0.00500	<0.00500	<0.00500	<0.00500	<0.00500	<0.00500	<0.00500	<0.00500	<0.00500	<0.00500
SEP SBW - 7FT	11/20/2024	7 Ft	<0.00500	<0.00500	<0.00500	<0.00500	<0.00500	<0.00500	<0.00500	<0.00500	<0.00500	0.0488	<0.00500	0.00555	1.22	3.19
SEP SBW01 - 12FT	11/20/2024	12 Ft	<0.00500	<0.00500	<0.00500	<0.00500	<0.00500	<0.00500	<0.00500	<0.00500	<0.00500	<0.00500	<0.00500	<0.00500	<0.00500	<0.00500
SEP SBW01 - 6FT	11/20/2024	6 Ft	<0.00500	<0.00500	<0.00500	<0.00500	<0.00500	<0.00500	<0.00500	<0.00500	<0.00500	0.0296	<0.00500	<0.00500	0.370	0.817
PWV SBN01 - 12Ft	11/25/2024	12Ft	<0.00500	<0.00500	<0.00500	<0.00500	<0.00500	<0.00500	<0.00500	<0.00500	<0.00500	<0.00500	<0.00500	<0.00500	<0.00500	<0.00500
PWV SBN01 - 6Ft	11/25/2024	6Ft	<0.00500	<0.00500	<0.00500	<0.00500	<0.00500	<0.00500	<0.00500	<0.00500	<0.00500	<0.00500	<0.00500	<0.00500	<0.00500	<0.00500
SEP SBE - 11Ft	11/25/2024	11Ft	<0.00500	<0.00500	<0.00500	<0.00500	<0.00500	<0.00500	<0.00500	<0.00500	<0.00500	<0.00500	<0.00500	<0.00500	<0.00500	<0.00500
SEP SBE - 7Ft	11/25/2024	7Ft	<0.00500	<0.00500	<0.00500	<0.00500	<0.00500	<0.00500	0.00689	<0.00500	<0.00500	<0.00500	<0.00500	<0.00500	0.625	0.783
SEP SBE01 - 12Ft	11/25/2024	12Ft	<0.00500	<0.00500	<0.00500	<0.00500	<0.00500	<0.00500	<0.00500	<0.00500	<0.00500	<0.00500	<0.00500	<0.00500	<0.00500	<0.00500
SEP SBE01 - 4Ft	11/25/2024	4Ft	<0.00500	<0.00500	<0.00500	<0.00500	<0.00500	<0.00500	<0.00500	<0.00500	<0.00500	<0.00500	<0.00500	<0.00500	<0.00500	<0.00500
SEP SBW02 - 12Ft	11/25/2024	12Ft	<0.00500	<0.00500	<0.00500	<0.00500	<0.00500	<0.00500	<0.00500	<0.00500	<0.00500	<0.00500	<0.00500	<0.00500	<0.00500	<0.00500
SEP SBW02 - 6Ft	11/25/2024	6Ft	<0.00500	<0.00500	<0.00500	<0.00500	<0.00500	<0.00500	<0.00500	<0.00500	<0.00500	<0.00500	<0.00500	<0.00500	<0.00500	<0.00500

1. Bold values exceed the ECMC Table 915-1 limit(s)

2. Red & blue highlighted soil analytical values indicate an exceedance of the referenced soil screening level (SSL)

3. * Indicates laboratory minimum detection limit in excess of SSL

4. ** Summation of GRO+DRO+ORO must be less than 500 mg/kg

(<) = Analytical result is less than the indicated laboratory reporting limit.

TPH-GRO = Total petroleum hydrocarbons - gasoline range organics

TPH-DRO = Total petroleum hydrocarbons - diesel range organics

TPH-ORO = Total petroleum hydrocarbons - oil range organics

mg/kg = Milligrams per kilogram

ft. = Feet

bgs = Below ground surface

NA - Not analyzed

TABLE 4
SUMMARY OF SOIL SUITABILITY FOR RECLAMATION
NOBLE 100322
KNAUB-64N65W 9SWSW, WELD COUNTY, COLORADO
REM # 30788

Sample ID	Sample Date	Depth (ft)	pH (Standard Units)	EC (mmhos/cm)	SAR (Standard Units)	Boron (mg/L)
ECMC Table 915-1 Soil Suitability Limits			6 - 8.3	4	6	2
SEP SBE01 - 4Ft	11/25/2024	4 Ft	9.69	0.321	1.36	2.02
PWV SBW01 - 5FT	11/20/2024	5 Ft	7.82	0.447	0.702	<2.00
PWV SBCEN - 6FT	11/20/2024	6 Ft	8.26	0.304	0.622	<2.00
PWV SBE - 6FT	11/20/2024	6 Ft	8.57	0.337	1.21	<2.00
PWV SBN - 6FT	11/20/2024	6 Ft	5.44	0.359	1.42	<2.00
PWV SBS - 6FT	11/20/2024	6 Ft	8.44	0.375	0.634	<2.00
PWV SBS01 - 6FT	11/20/2024	6 Ft	8.65	1.25	2.24	<2.00
SEP SBN - 6FT	11/20/2024	6 Ft	7.02	0.422	0.384	<2.00
SEP SBN01 - 6FT	11/20/2024	6 Ft	8.41	0.424	1.71	<2.00
SEP SBS - 6FT	11/20/2024	6 Ft	7.70	0.330	4.02	<2.00
SEP SBW01 - 6FT	11/20/2024	6 Ft	7.43	0.365	5.06	<2.00
PWV SBN01 - 6Ft	11/25/2024	6 Ft	8.45	0.583	1.94	<2.00
SEP SBW02 - 6Ft	11/25/2024	6 Ft	8.81	0.837	3.36	<2.00
SEP SBS01 - 7FT	11/20/2024	7 Ft	5.55	0.415	2.22	<2.00
SEP SBW - 7FT	11/20/2024	7 Ft	8.70	1.33	6.62	<2.00
SEP SBE - 7Ft	11/25/2024	7 Ft	4.78	2.70	1.35	<2.00
PWV SBW - 10FT	11/20/2024	10 Ft	8.27	0.736	1.15	<2.00
SEP SBCEN - 11FT	11/20/2024	11 Ft	8.44	0.998	3.40	<2.00
SEP SBE - 11Ft	11/25/2024	11 Ft	8.99	0.226	1.59	<2.00
PWV SBCEN - 12FT	11/20/2024	12 Ft	8.49	0.516	1.67	<2.00
PWV SBE - 12FT	11/20/2024	12 Ft	8.30	0.452	1.75	<2.00
PWV SBN - 12FT	11/20/2024	12 Ft	8.30	1.52	2.03	<2.00
PWV SBS - 12FT	11/20/2024	12 Ft	8.13	0.548	2.16	<2.00

TABLE 4
SUMMARY OF SOIL SUITABILITY FOR RECLAMATION
NOBLE 100322
KNAUB-64N65W 9SWSW, WELD COUNTY, COLORADO
REM # 30788

Sample ID	Sample Date	Depth (ft)	pH (Standard Units)	EC (mmhos/cm)	SAR (Standard Units)	Boron (mg/L)
ECMC Table 915-1 Soil Suitability Limits			6 - 8.3	4	6	2
PWV SBS01 - 12FT	11/20/2024	12 Ft	8.09	0.824	2.18	<2.00
PWV SBW - 12FT	11/20/2024	12 Ft	8.25	0.230	2.53	<2.00
PWV SBW01 - 12FT	11/20/2024	12 Ft	8.53	0.302	1.75	<2.00
SEP SBCEN - 12FT	11/20/2024	12 Ft	8.13	2.21	2.70	<2.00
SEP SBN - 12FT	11/20/2024	12 Ft	8.41	1.07	3.72	<2.00
PWV SBN01 - 12Ft	11/25/2024	12 Ft	8.63	0.271	1.88	<2.00
SEP SBE01 - 12Ft	11/25/2024	12 Ft	8.74	0.297	2.07	<2.00
SEP SBW02 - 12Ft	11/25/2024	12 Ft	8.88	0.272	2.08	<2.00
AST 3'	01/29/2024	3 Ft	6.67	0.112	0.361	<2.00
PWV FLOOR 3'	01/29/2024	3 Ft	8.81	0.275	0.183	<2.00
SEP DL 3'	01/29/2024	3 Ft	7.79	0.519	0.463	<2.00
BKG01 - 3Ft	11/25/2024	3 Ft	9.36	1.10	0.240	<2.00
BKG02 - 3Ft	11/25/2024	3 Ft	9.05	0.389	0.361	<2.00
BKG03 - 3Ft	11/25/2024	3 Ft	7.06	0.134	0.0488	<2.00
BKG04 - 3Ft	11/25/2024	3 Ft	8.06	0.241	0.0368	<2.00
BKG05 - 3Ft	11/25/2024	3 Ft	8.41	0.807	0.0523	<2.00
BKG01 - 8Ft	11/25/2024	8 Ft	8.83	0.725	0.744	<2.00
BKG02 - 8Ft	11/25/2024	8 Ft	8.27	0.270	0.0525	<2.00
BKG03 - 8Ft	11/25/2024	8 Ft	8.48	0.353	2.06	<2.00
BKG04 - 8Ft	11/25/2024	8 Ft	8.16	0.738	3.79	<2.00
BKG05 - 8Ft	11/25/2024	8 Ft	8.40	0.404	0.224	<2.00
Maximum Background Concentration		3	9.36	1.10	0.361	<2.00
Maximum Background Concentration		8	8.83	0.738	3.79	<2.00

1. **Bold** faced values exceed the ECMC Table 915-1 limit(s), but are within background concentrations.

2. **Bold** faced values exceed the ECMC Table 915-1 limit(s) and native background concentrations.

3. Brown highlighted soil analytical values indicate a regulatory exceedance.

NA - Not analyzed/Not applicable

TABLE 5
SUMMARY OF METALS IN SOIL CHEMISTRY DATA
NOBLE 100322
KNAUB-64N65W 9SWSW, WELD COUNTY, COLORADO
REM # 30788

Sample ID	Sample Date	Depth (ft)	Arsenic (mg/kg)	Barium (mg/kg)	Cadmium (mg/kg)	Chromium (VI) (mg/kg)	Copper (mg/kg)	Lead (mg/kg)	Nickel (mg/kg)	Selenium (mg/kg)	Silver (mg/kg)	Zinc (mg/kg)
ECMC Table 915-1 Limits (Residential SSL)			0.68	15000	71	0.3	3100	400	1500	390	390	23000
ECMC Table 915-1 Limits (Protection of Groundwater SSL)			0.29	82	0.38	0.00067	46	14	26	0.26	0.8	370
SEP SBE01 - 4Ft	11/25/2024	4 Ft	2.86	99.4	<0.200	<0.30	4.29	8.30	5.45	<0.260	0.0453	20.8
PWV SBW01 - 5FT	11/20/2024	5 Ft	2.67	83.5	<0.200	<0.30	4.27	8.11	4.80	<0.260	0.0477	21.3
PWV SBCEN - 6FT	11/20/2024	6 Ft	1.50	51.7	<0.200	<0.30	3.52	4.85	3.15	<0.260	0.0252	16.1
PWV SBE - 6FT	11/20/2024	6 Ft	1.35	50.6	<0.200	<0.30	3.46	4.42	3.71	<0.260	<0.0200	15.4
PWV SBN - 6FT	11/20/2024	6 Ft	2.49	88.0	0.235	<0.30	5.02	8.21	7.13	<0.260	0.0520	23.9
PWV SBS - 6FT	11/20/2024	6 Ft	1.16	33.2	<0.200	<0.30	2.62	3.95	2.48	<0.260	0.0332	12.0
PWV SBS01 - 6FT	11/20/2024	6 Ft	1.27	40.0	<0.200	<0.30	3.19	3.91	3.09	<0.260	<0.0200	14.2
SEP SBN - 6FT	11/20/2024	6 Ft	1.47	48.8	<0.200	<0.30	3.76	4.87	3.67	<0.260	0.0297	16.1
SEP SBN01 - 6FT	11/20/2024	6 Ft	0.881	28.0	<0.200	<0.30	2.09	2.96	2.48	<0.260	<0.0200	10.6
SEP SBS - 6FT	11/20/2024	6 Ft	0.691	31.0	<0.200	<0.30	2.48	3.12	2.35	<0.260	<0.0200	10.5
SEP SBW01 - 6FT	11/20/2024	6 Ft	1.14	33.1	<0.200	<0.30	2.60	3.46	3.18	<0.260	0.0231	11.7
PWV SBN01 - 6Ft	11/25/2024	6 Ft	0.791	30.3	<0.200	<0.30	2.03	3.02	2.04	<0.260	<0.0200	8.59
SEP SBW02 - 6Ft	11/25/2024	6 Ft	0.856	33.1	<0.200	<0.30	2.43	3.25	2.59	<0.260	<0.0200	12.6
SEP SBS01 - 7FT	11/20/2024	7 Ft	1.12	23.5	<0.200	<0.30	1.94	2.95	2.55	<0.260	<0.0200	9.72
SEP SBW - 7FT	11/20/2024	7 Ft	0.648	35.0	<0.200	<0.30	2.45	3.14	2.61	<0.260	0.0225	11.4
PWV SBW - 10FT	11/20/2024	10 Ft	1.33	36.9	<0.200	<0.30	3.18	4.08	3.54	<0.260	0.0222	14.3
SEP SBCEN - 11FT	11/20/2024	11 Ft	1.23	40.0	<0.200	<0.30	2.82	3.76	2.99	<0.260	<0.0200	12.0
SEP SBE - 11Ft	11/25/2024	11 Ft	1.08	31.3	<0.200	<0.30	3.96	3.58	2.45	<0.260	<0.0200	12.0
PWV SBCEN - 12FT	11/20/2024	12 Ft	1.05	23.5	<0.200	<0.30	2.33	3.18	2.31	<0.260	<0.0200	11.3
PWV SBE - 12FT	11/20/2024	12 Ft	1.66	49.7	<0.200	<0.30	3.12	4.04	3.54	<0.260	<0.0200	16.5
PWV SBN - 12FT	11/20/2024	12 Ft	1.42	41.1	<0.200	<0.30	5.79	3.99	3.63	<0.260	0.0360	14.5
PWV SBS - 12FT	11/20/2024	12 Ft	1.01	30.9	<0.200	<0.30	2.06	2.98	2.03	<0.260	<0.0200	10.0
PWV SBS01 - 12FT	11/20/2024	12 Ft	1.00	35.9	<0.200	<0.30	2.08	2.84	2.00	<0.260	<0.0200	10.6
PWV SBW - 12FT	11/20/2024	12 Ft	0.868	27.4	<0.200	<0.30	2.11	2.72	2.02	<0.260	<0.0200	9.85
PWV SBW01 - 12FT	11/20/2024	12 Ft	0.857	28.7	<0.200	<0.30	2.11	2.77	1.71	<0.260	<0.0200	9.06

TABLE 5
SUMMARY OF METALS IN SOIL CHEMISTRY DATA
NOBLE 100322
KNAUB-64N65W 9SWSW, WELD COUNTY, COLORADO
REM # 30788

Sample ID	Sample Date	Depth (ft)	Arsenic (mg/kg)	Barium (mg/kg)	Cadmium (mg/kg)	Chromium (VI) (mg/kg)	Copper (mg/kg)	Lead (mg/kg)	Nickel (mg/kg)	Selenium (mg/kg)	Silver (mg/kg)	Zinc (mg/kg)
ECMC Table 915-1 Limits (Residential SSL)			0.68	15000	71	0.3	3100	400	1500	390	390	23000
ECMC Table 915-1 Limits (Protection of Groundwater SSL)			0.29	82	0.38	0.00067	46	14	26	0.26	0.8	370
SEP SBCEN - 12FT	11/20/2024	12 Ft	2.60	73.4	<0.200	<0.30	3.32	5.32	5.06	<0.260	0.0206	20.0
SEP SBN - 12FT	11/20/2024	12 Ft	1.24	39.6	<0.200	<0.30	2.68	3.85	2.83	<0.260	<0.0200	14.2
SEP SBN01 - 12FT	11/20/2024	12 Ft	1.02	42.0	<0.200	<0.30	2.53	3.62	2.50	<0.260	<0.0200	11.6
SEP SBS - 12FT	11/20/2024	12 Ft	1.52	55.1	<0.200	<0.30	2.81	4.26	3.27	<0.260	<0.0200	15.1
SEP SBS01 - 12FT	11/20/2024	12 Ft	0.729	22.4	<0.200	<0.30	1.73	2.19	1.71	<0.260	<0.0200	8.44
SEP SBW - 12FT	11/20/2024	12 Ft	1.06	30.9	<0.200	<0.30	2.31	3.22	2.64	<0.260	<0.0200	11.9
SEP SBW01 - 12FT	11/20/2024	12 Ft	1.25	55.4	<0.200	<0.30	2.73	4.14	3.33	<0.260	<0.0200	14.4
PWV SBN01 - 12Ft	11/25/2024	12 Ft	1.11	50.7	0.303	<0.30	2.80	3.34	3.03	<0.260	0.0229	13.7
SEP SBE01 - 12Ft	11/25/2024	12 Ft	1.71	45.5	<0.200	<0.30	3.39	4.77	3.61	<0.260	0.0212	16.7
SEP SBW02 - 12Ft	11/25/2024	12 Ft	1.36	41.4	<0.200	<0.30	3.19	4.46	3.23	<0.260	<0.0200	14.6
AST 3'	1/29/2024	3.0 Ft	0.794	69.3	<0.200	<0.30	2.20	5.38	3.10	<0.260	0.0287	9.32
PWV FLOOR 3'	1/29/2024	3.0 Ft	0.751	55.7	<0.200	<0.30	2.45	5.85	1.65	<0.260	0.0436	10.4
SEP DL 3'	1/29/2024	3.0 Ft	0.654	40.8	<0.200	<0.30	1.69	3.62	1.62	<0.260	<0.0200	7.11
BKG01 - 3Ft	11/25/2024	3 Ft	2.76	80.7	<0.200	<0.30	4.71	6.99	5.77	<0.260	0.0447	21.2
BKG02 - 3Ft	11/25/2024	3 Ft	1.32	46.1	<0.200	<0.30	3.53	4.44	3.53	<0.260	<0.0200	13.8
BKG03 - 3Ft	11/25/2024	3 Ft	1.35	44.9	<0.200	<0.30	2.93	4.41	3.75	<0.260	0.0289	14.2
BKG04 - 3Ft	11/25/2024	3 Ft	1.68	40.9	0.208	<0.30	5.03	8.34	2.81	<0.260	0.0525	18.7
BKG05 - 3Ft	11/25/2024	3 Ft	1.28	48.1	<0.200	<0.30	2.98	4.19	3.41	<0.260	0.0205	14.8
BKG01 - 8Ft	11/25/2024	8 Ft	1.23	36.7	<0.200	<0.30	2.73	3.26	2.85	<0.260	<0.0200	12.1
BKG02 - 8Ft	11/25/2024	8 Ft	1.27	54.5	<0.200	<0.30	3.06	3.94	4.48	<0.260	<0.0200	14.1
BKG03 - 8Ft	11/25/2024	8 Ft	0.987	34.3	<0.200	<0.30	2.48	3.54	2.34	<0.260	0.0269	13.5
BKG04 - 8Ft	11/25/2024	8 Ft	1.45	46.1	<0.200	<0.30	2.72	4.12	2.91	<0.260	<0.0200	13.0
BKG05 - 8Ft	11/25/2024	8 Ft	1.16	45.7	<0.200	<0.30	2.68	3.37	3.02	<0.260	<0.0200	12.7
1.25x Maximum Background Concentration		3	3.45	101	0.26	<0.30	6.29	10.4	7.21	<0.260	0.0656	26.5
1.25x Maximum Background Concentration		8	1.81	68.1	<0.200	<0.30	3.83	5.15	5.60	<0.260	0.0336	17.6

1. **Bold** faced values exceed the ECMC Table 915-1 limit(s), but are within 1.25x background concentrations.

2. **Red** faced values exceed the ECMC Table 915-1 limit(s) and native background concentrations.

3. Red & blue highlighted soil analytical values indicate an exceedance of the referenced soil screening level (SSL).

4. Non-detect background results accounted for in the highest background concentration by using the reporting limit.

ECMC = Energy & Carbon Management Commission

(<) = Analytical result is less than the indicated laboratory reporting limit.

mg/kg = Milligrams per kilogram

ft. = Feet

bgs = Below ground surface

* Indicates laboratory minimum detection limit in excess of SSL

NA - Not analyzed/Not applicable

TABLE 6
SUMMARY OF GROUNDWATER ELEVATION DATA AND ORGANIC CHEMISTRY DATA
NOBLE 100322
KNAUB-64N65W 9SWSW, WELD COUNTY, COLORADO
REM # 30788

Sample ID	Sample Date	Benzene (µg/L)	Toluene (µg/L)	Ethyl-Benzene (µg/L)	Xylenes (µg/L)	Naphthalene (µg/L)	1,2,4- Trimethyl- Benzene (µg/L)	1,3,5- Trimethyl- Benzene (µg/L)	TOC Elevation (ft)	Depth to Groundwater Below TOC (ft)	Groundwater Elevation (ft)	LNAPL Thickness (ft)
ECMC Table 915-1 Limits		5.0	560	700	1400	140	67	67				
MW-1	02/28/25	95.1	<1.0	10.8	39.2	<5.0	40.5	<1.0	100	3.44	96.56	NP
MW-2	02/28/25	<1.0	<1.0	79.4	1910	10.2	447	134	100.88	4.78	96.1	NP
MW-3	02/28/25	<1.0	<1.0	<1.0	<3.0	<5.0	1.31	<1.0	100.51	4.59	95.92	NP
BH-1	02/28/25	NA	NA	NA	NA	NA	NA	NA	102.86	6.2	96.66	NP
BH-3	02/28/25	NA	NA	NA	NA	NA	NA	NA	103.54	7.22	96.32	NP
BH-4	02/28/25	NA	NA	NA	NA	NA	NA	NA	103.41	6.88	96.53	NP
BH-5	02/28/25	NA	NA	NA	NA	NA	NA	NA	103.59	7.41	96.18	NP

1. Bold values exceed the ECMC limit(s)

2. Red highlighted groundwater analytical values indicate a regulatory exceedance

NP - No measurable LNAPL, NA - Not Analyzed, NL - No Limit, INA - Inaccessible, IW - Insufficient Water, DES - Destroyed

TABLE 7
SUMMARY OF INORGANIC GROUNDWATER CHEMISTRY DATA
NOBLE 100322
KNAUB-64N65W 9SWSW, WELD COUNTY, COLORADO
REM # 30788

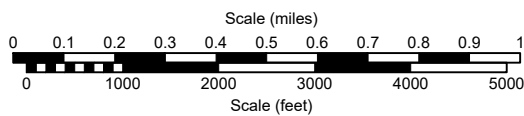
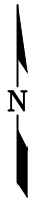
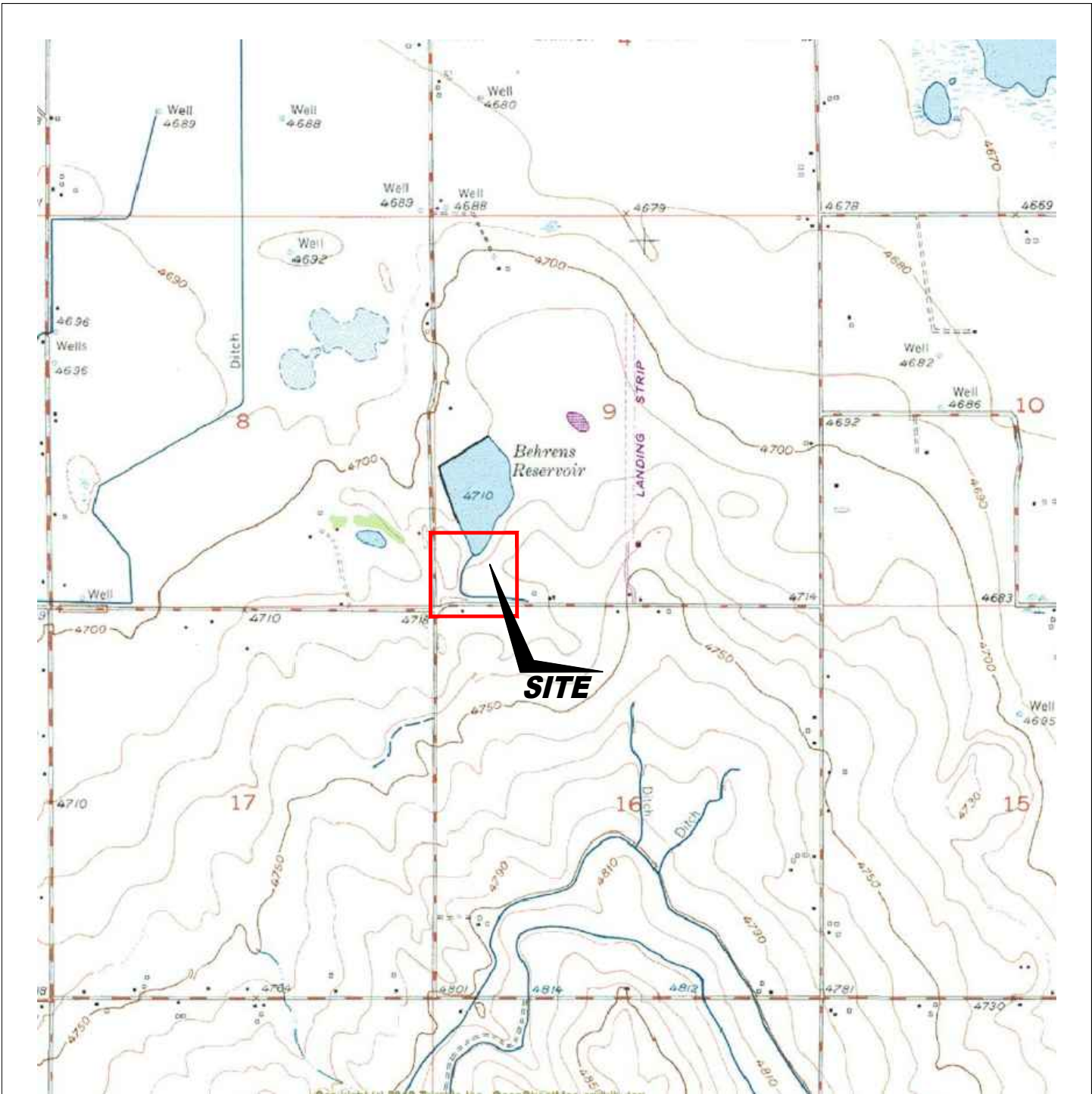
Sample ID	Sample Date	Total Dissolved Solids (mg/L)	Chloride Ion (mg/L)	Sulfate Ion (mg/L)
ECMC Table 915-1 Limits*		<1.25 x local background	250 or <1.25 x local background	250 or <1.25 x local background
MW-1	2/28/25	1140	275	251
MW-2	2/28/25	1410	264	301
MW-3	2/28/25	1300	236	322
BH-1	2/28/25	NS	NS	NS
BH-3	2/28/25	NS	NS	NS
BH-4	2/28/25	NS	NS	NS
BH-5	2/28/25	NS	NS	NS
Background Concentration (Current)				

1. Bold values exceed the ECMC limit(s)

2. Blue highlighted groundwater analytical values indicate a regulatory exceedance

NP - No measurable LNAPL, NA - Not Analyzed, INA - Inaccessible, IW - Insufficient Water, DES - Destroyed

*Dissolved metals refer to Colorado Regulation 41 Standards



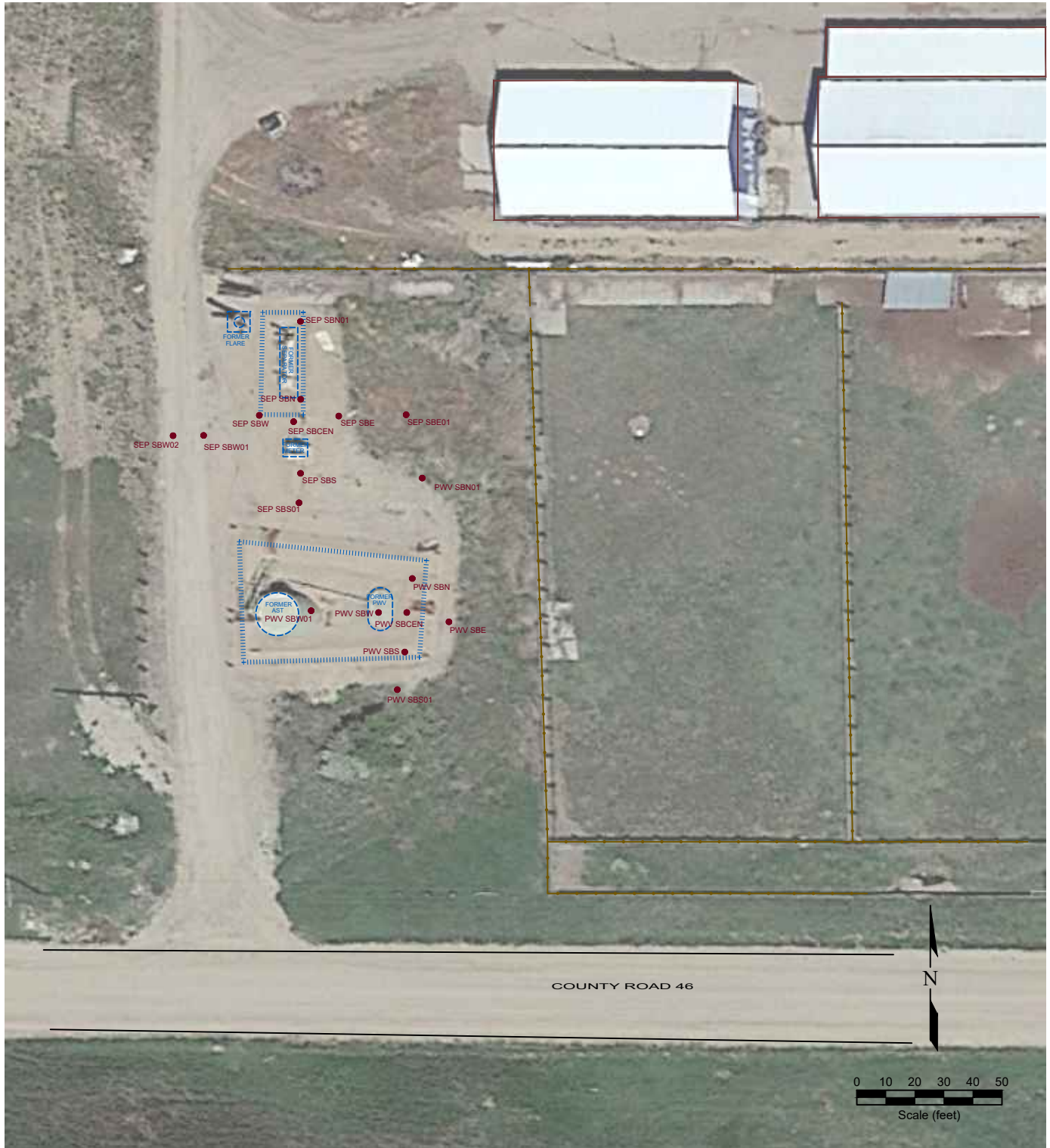
USGS 7.5 MINUTE SERIES (TOPOGRAPHIC)

Figure 1
SITE LOCATION MAP

NOBLE ~ KNAUB 64N65W 9SWSW
 SWSW Sec. 9, T4N, R65W, 6th PM
 Weld County, Colorado
 40.320238°, -104.673833°

Project # C024-021	API #	Facility # 328257
Date 2/5/25	Remediation # 30788	Filename 24021TFC





LEGEND

- SOIL BORING LOCATION
- ABOVE GROUND STORAGE TANK
- ▭ FORMER FACILITY
- ▭ BUILDING
- FENCE LINE
- ▭ CONTAINMENT BERM
- CONTAINMENT WALL

Figure 2
SITE MAP

NOBLE ~ KNAUB 64N65W 9SW SW
 SWSW Sec. 9, T4N, R65W, 6th PM
 Weld County, Colorado
 40.320238°, -104.673833°

Project No. C024-021	API #	Facility # 328257
Date 2/5/25	Remediation # 30788	Filename 24021QFC



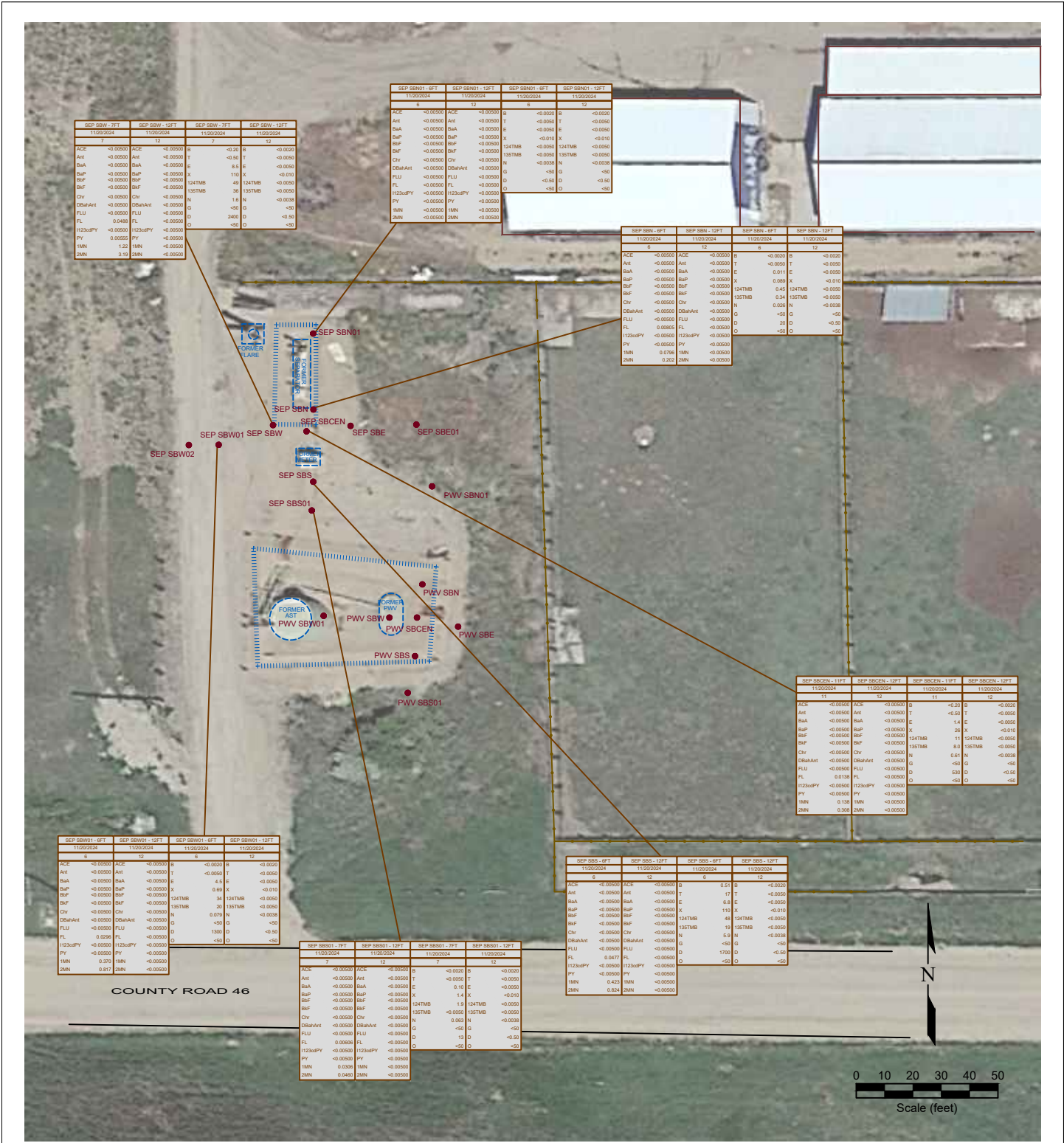


Figure 3
SEPARATOR ORGANIC SOIL CHEMISTRY MAP

NOBLE ~ KNAUB 64N65W 9SWSW
SWSW Sec. 9, T4N, R65W, 6th PM
Weld County, Colorado
40.320238° , -104.673833°

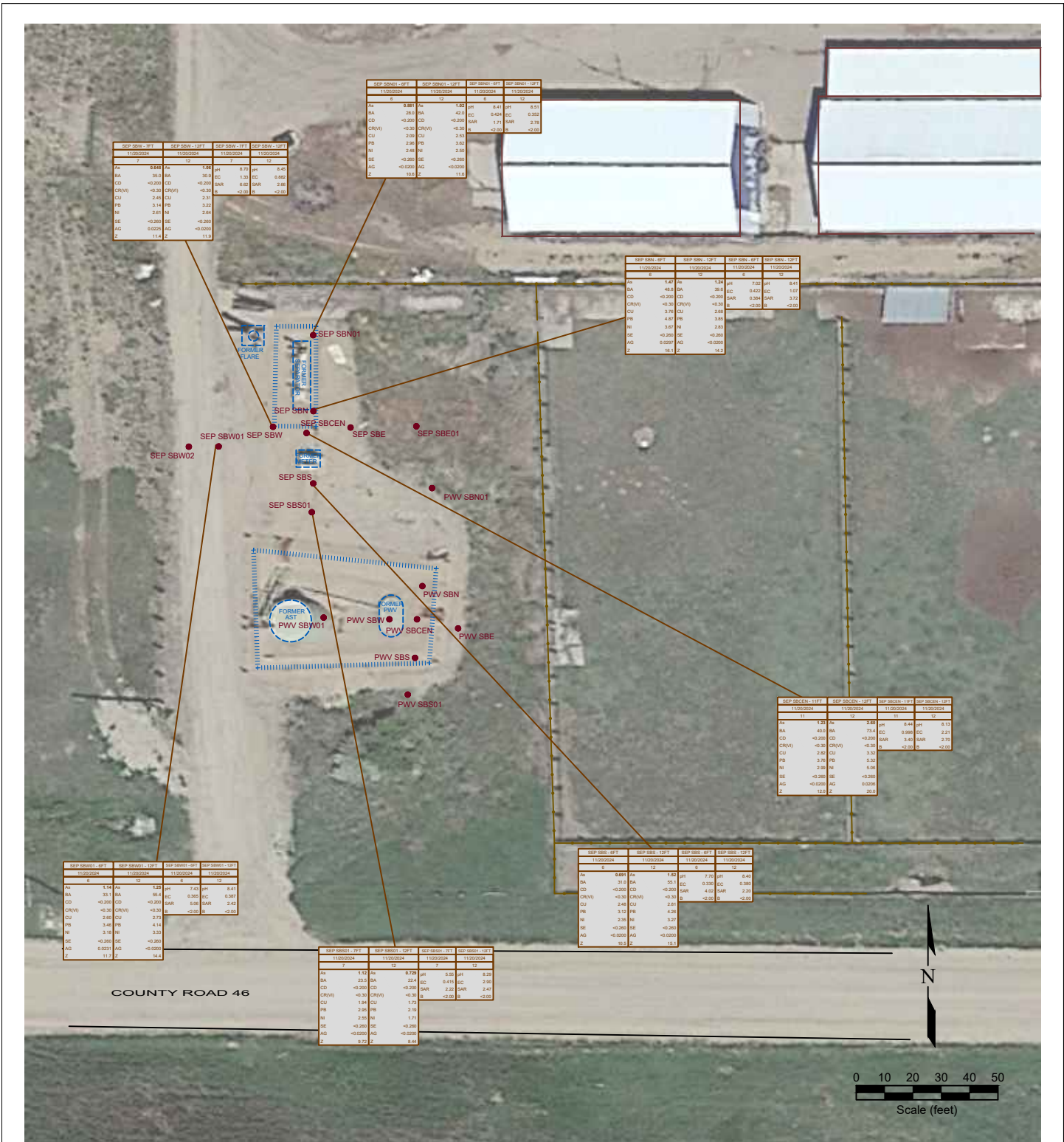
Project No. C024-021	API #	Facility # 328257
Date 2/5/25	Remediation # 30788	Filename 24021QFC



LEGEND

- SOIL BORING LOCATION
- ABOVE GROUND STORAGE TANK
- FORMER FACILITY
- ▭ BUILDING
- ▭ BUILDING
- ▭ FENCE LINE
- ▭ CONTAINMENT BERM
- ▭ CONTAINMENT WALL

SAMPLE ID	SAMPLE ID	SAMPLE ID	SAMPLE ID		
DATE	DATE SAMPLED	DATE	DATE SAMPLED		
DEPTH	DEPTH (ft)	DEPTH	DEPTH (ft)		
ACE	<0.0050	ACENAPHTHENE (mg/kg)	B	<0.0020	ETHYLBIENZENE (mg/kg)
Ant	<0.0050	ANTHRACENE (mg/kg)	T	<0.0050	TOLUENE (mg/kg)
BAA	<0.0050	BENZO (A) ANTHRACENE (mg/kg)	E	<0.0050	TOTAL XYLENES (mg/kg)
BaP	<0.0050	BENZO (B) FLUORANTHENE (mg/kg)	X	<0.10	1,2,4-TRIMETHYLBENZENE (mg/kg)
BF	<0.0050	BENZO (K) FLUORANTHENE (mg/kg)	124TMB	<0.0050	1,3,5-TRIMETHYLBENZENE (mg/kg)
BF	<0.0050	CHRYSENE (mg/kg)	131TMB	<0.0050	NAPHTHALENE (mg/kg)
Chv	<0.0050	DIBENZ (A,H) ANTHRACENE (mg/kg)	N	<0.0038	TPH-CRO (mg/kg)
DBaAnt	<0.0050	FLUORANTHENE (mg/kg)	D	<0.50	TPH-ORO (mg/kg)
FLU	<0.0050	FLUORENE (mg/kg)	D	<0.50	
FLU	<0.0050	INDENO (1,2,3-CD) PYRENE (mg/kg)	D	<0.50	
FLU	<0.0050	PYRENE (mg/kg)	D	<0.50	
FLU	<0.0050	1-METHYLNAPHTHALENE (mg/kg)	D	<0.50	
FLU	<0.0050	2-METHYLNAPHTHALENE (mg/kg)	D	<0.50	



LEGEND

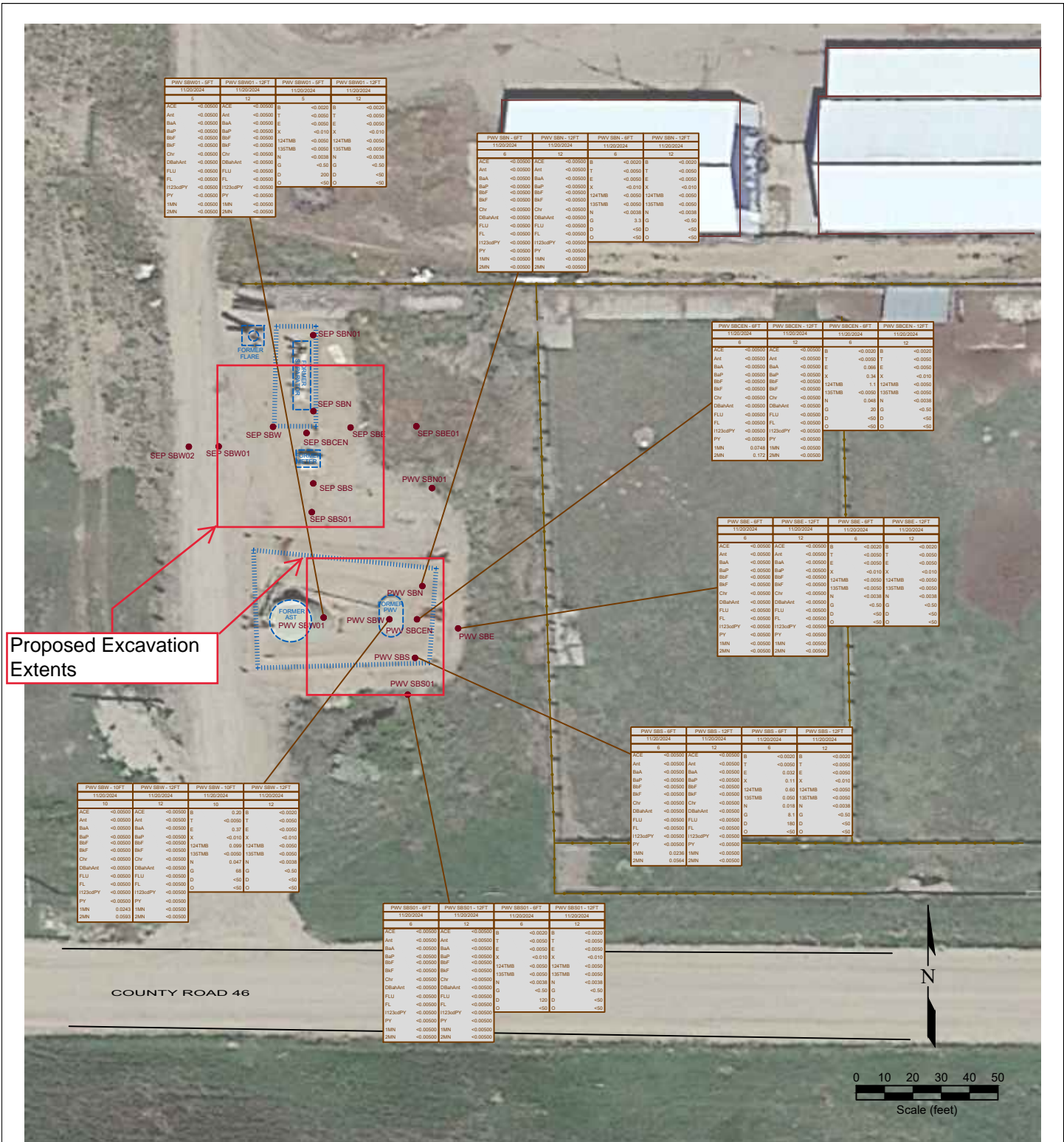
- SOIL BORING LOCATION
- ABOVE GROUND STORAGE TANK
- ▭ FORMER FACILITY
- ▭ BUILDING
- FENCE LINE
- ▬ CONTAINMENT BERM
- CONTAINMENT WALL

SAMPLE ID	SAMPLE DATE	DEPTH (ft)	PARAMETER	VALUE	UNIT
Ar	2/5/25	-0.01	ARSENIC	0.881	mg/kg
BA	2/5/25	-0.01	BARIUM	28.0	mg/kg
CD	2/5/25	-0.01	CADMIUM	0.200	mg/kg
CR(V)	2/5/25	-0.01	CHROMIUM	0.33	mg/kg
CU	2/5/25	-0.01	COPPER	2.09	mg/kg
PB	2/5/25	-0.01	LEAD	2.36	mg/kg
NI	2/5/25	-0.01	NICKEL	2.48	mg/kg
SE	2/5/25	-0.01	SELENIUM	0.200	mg/kg
AG	2/5/25	-0.01	SILVER	0.020	mg/kg
Z	2/5/25	-0.01	ZINC	10.2	mg/kg

Figure 4
SEPARATOR METALS AND INORGANIC SOIL CHEMISTRY MAP

NOBLE ~ KNAUB 64N65W 9SWSW
 SWSW Sec. 9, T4N, R65W, 6th PM
 Weld County, Colorado
 40.320238°, -104.673833°

Project No. C024-021	API #	Facility # 328257	
Date 2/5/25	Remediation # 30788	Filename 24021QFC	



LEGEND

- SOIL BORING LOCATION
- ABOVE GROUND STORAGE TANK
- FORMER FACILITY
- BUILDING
- FENCE LINE
- ▬ CONTAINMENT BERM
- ▬ CONTAINMENT WALL

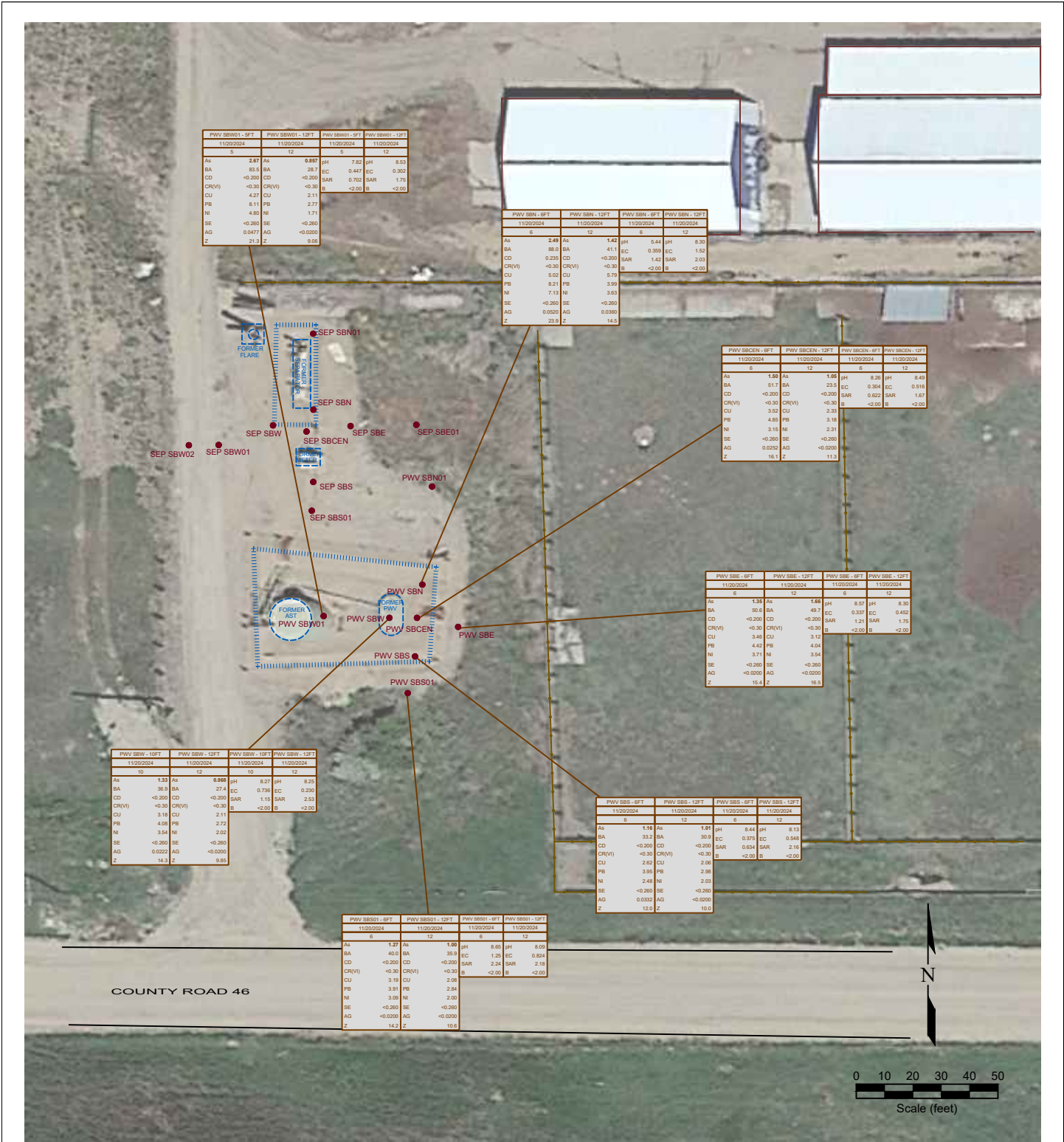
SAMPLE ID	DATE	DEPTH (ft)	SAMPLE ID	DATE	DEPTH (ft)
ACE	<0.0050		ACE	<0.0050	
Ant	<0.0050		Ant	<0.0050	
BaA	<0.0050		BaA	<0.0050	
BaP	<0.0050		BaP	<0.0050	
BaF	<0.0050		BaF	<0.0050	
Chv	<0.0050		Chv	<0.0050	
DBaAnt	<0.0050		DBaAnt	<0.0050	
FLU	<0.0050		FLU	<0.0050	
FL	<0.0050		FL	<0.0050	
123aPY	<0.0050		123aPY	<0.0050	
PY	<0.0050		PY	<0.0050	
1MN	<0.0050		1MN	<0.0050	
2MN	<0.0050		2MN	<0.0050	

Figure 5
NOBLE ~ KNAUB 64N65W 9SWW
SWSW Sec. 9, T4N, R65W, 6th PM
Weld County, Colorado
40.320238° , -104.673833°

Project No. C024-021 **API #** **Facility # 328257**

Date 2/5/25 **Remediation # 30788** **Filename 24021QFC**

REMONT ENVIRONMENTAL



PWV SBW01 - 6FT		PWV SBW01 - 12FT		PWV SBW01 - 6FT		PWV SBW01 - 12FT	
11/20/2024		11/20/2024		11/20/2024		11/20/2024	
6		12		6		12	
As	2.67	As	0.887	pH	7.82	pH	8.53
BA	83.5	BA	28.7	EC	0.447	EC	0.302
CD	<-0.200	CD	<-0.200	SAR	0.702	SAR	1.75
CR(V)	<-0.30	CR(V)	<-0.30	B	<-2.00	B	<-2.00
CU	4.27	CU	2.11				
PB	8.11	PB	2.77				
NI	4.80	NI	1.71				
SE	<-0.260	SE	<-0.260				
AG	0.0477	AG	<-0.0200				
Z	21.3	Z	9.06				

PWV SBN - 6FT		PWV SBN - 12FT		PWV SBN - 6FT		PWV SBN - 12FT	
11/20/2024		11/20/2024		11/20/2024		11/20/2024	
6		12		6		12	
As	2.49	As	1.42	pH	6.44	pH	8.30
BA	88.0	BA	4.11	EC	0.390	EC	1.82
CD	0.238	CD	<-0.200	SAR	1.42	SAR	2.03
CR(V)	<-0.30	CR(V)	<-0.30	B	<-2.00	B	<-2.00
CU	5.02	CU	5.79				
PB	8.21	PB	3.96				
NI	7.13	NI	3.63				
SE	<-0.260	SE	<-0.260				
AG	0.0520	AG	0.0360				
Z	23.0	Z	14.5				

PWV SBCEN - 6FT		PWV SBCEN - 12FT		PWV SBCEN - 6FT		PWV SBCEN - 12FT	
11/20/2024		11/20/2024		11/20/2024		11/20/2024	
6		12		6		12	
As	1.90	As	1.09	pH	8.28	pH	8.49
BA	51.7	BA	23.5	EC	0.304	EC	0.518
CD	<-0.200	CD	<-0.200	SAR	0.622	SAR	1.67
CR(V)	<-0.30	CR(V)	<-0.30	B	<-2.00	B	<-2.00
CU	3.52	CU	2.33				
PB	4.85	PB	3.18				
NI	3.15	NI	2.31				
SE	<-0.260	SE	<-0.260				
AG	0.0292	AG	<-0.0200				
Z	16.1	Z	11.3				

PWV SBE - 6FT		PWV SBE - 12FT		PWV SBE - 6FT		PWV SBE - 12FT	
11/20/2024		11/20/2024		11/20/2024		11/20/2024	
6		12		6		12	
As	1.35	As	1.68	pH	8.57	pH	8.20
BA	50.6	BA	49.1	EC	0.337	EC	0.482
CD	<-0.200	CD	<-0.200	SAR	1.21	SAR	1.75
CR(V)	<-0.30	CR(V)	<-0.30	B	<-2.00	B	<-2.00
CU	3.44	CU	3.12				
PB	4.42	PB	4.04				
NI	3.71	NI	3.54				
SE	<-0.260	SE	<-0.260				
AG	<-0.0200	AG	<-0.0200				
Z	15.4	Z	16.5				

PWV SBW - 10FT		PWV SBW - 12FT		PWV SBW - 10FT		PWV SBW - 12FT	
11/20/2024		11/20/2024		11/20/2024		11/20/2024	
10		12		10		12	
As	1.33	As	0.868	pH	8.27	pH	8.20
BA	36.9	BA	27.4	EC	0.736	EC	0.230
CD	<-0.200	CD	<-0.200	SAR	1.15	SAR	2.53
CR(V)	<-0.30	CR(V)	<-0.30	B	<-2.00	B	<-2.00
CU	3.19	CU	2.11				
PB	4.08	PB	2.72				
NI	3.54	NI	2.02				
SE	<-0.260	SE	<-0.260				
AG	0.0222	AG	<-0.0200				
Z	14.3	Z	9.85				

PWV SBS - 6FT		PWV SBS - 12FT		PWV SBS - 6FT		PWV SBS - 12FT	
11/20/2024		11/20/2024		11/20/2024		11/20/2024	
6		12		6		12	
As	1.16	As	1.07	pH	8.44	pH	8.13
BA	33.2	BA	30.9	EC	0.375	EC	0.548
CD	<-0.200	CD	<-0.200	SAR	0.634	SAR	2.16
CR(V)	<-0.30	CR(V)	<-0.30	B	<-2.00	B	<-2.00
CU	2.62	CU	2.98				
PB	3.95	PB	2.98				
NI	2.48	NI	2.03				
SE	<-0.260	SE	<-0.260				
AG	0.0333	AG	<-0.0200				
Z	12.0	Z	10.0				

PWV SBS01 - 6FT		PWV SBS01 - 12FT		PWV SBS01 - 6FT		PWV SBS01 - 12FT	
11/20/2024		11/20/2024		11/20/2024		11/20/2024	
6		12		6		12	
As	1.27	As	1.90	pH	8.25	pH	8.09
BA	40.0	BA	35.9	EC	1.28	EC	0.824
CD	<-0.200	CD	<-0.200	SAR	2.24	SAR	2.18
CR(V)	<-0.30	CR(V)	<-0.30	B	<-2.00	B	<-2.00
CU	3.19	CU	2.95				
PB	3.91	PB	2.84				
NI	3.09	NI	2.00				
SE	<-0.260	SE	<-0.260				
AG	<-0.0200	AG	<-0.0200				
Z	14.2	Z	10.6				

LEGEND

- SOIL BORING LOCATION
- ABOVE GROUND STORAGE TANK
- ▭ FORMER FACILITY
- ▭ BUILDING
- ▭ BUILDING
- ▭ FENCE LINE
- ▭ CONTAINMENT BERM
- ▭ CONTAINMENT WALL

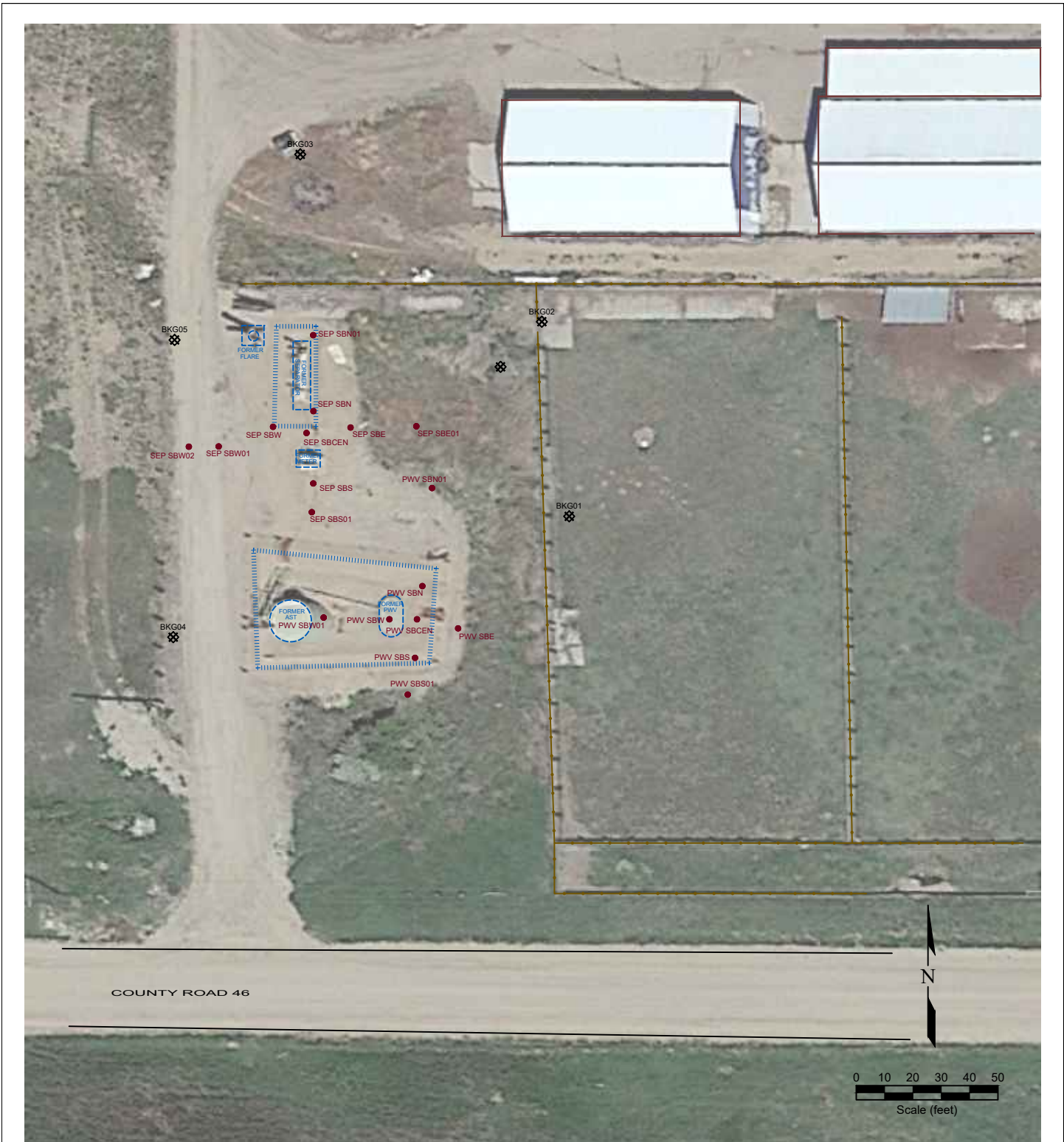
SAMPLE	SAMPLE ID	SAMPLE	SAMPLE ID
DATE	DATE SAMPLED	DATE	DATE SAMPLED
DEPTH	DEPTH (ft)	DEPTH	DEPTH (ft)
As	<-0.01	ARSENIC (mg/kg)	<-0.01
BA	<-0.01	BARIUM (mg/kg)	<-0.01
CD	<-0.01	CADMIUM (mg/kg)	<-0.01
CR(V)	<-0.05	CHROMIUM (mg/kg)	<-0.05
CU	<-0.01	COPPER (mg/kg)	<-0.01
PB	<-0.05	LEAD (mg/kg)	<-0.05
NI	<-0.05	NICKEL (mg/kg)	<-0.05
SE	<-0.1	SELENIUM (mg/kg)	<-0.1
AG	<-0.05	SILVER (mg/kg)	<-0.05
Z	<-0.05	ZINC (mg/kg)	<-0.05

Figure 6
PWV METALS AND INORGANIC SOIL CHEMISTRY MAP

NOBLE ~ KNAUB 64N65W 9SWSW
SWSW Sec. 9, T4N, R65W, 6th PM
Weld County, Colorado
40.320238°, -104.673833°

Project No. C024-021	API #	Facility # 328257
Date 2/5/25	Remediation # 30788	Filename 24021QFC

REMONT ENVIRONMENTAL



LEGEND

- SOIL BORING LOCATION
- ⊗ BACKGROUND SOIL SAMPLE LOCATION
- ABOVE GROUND STORAGE TANK
- ▭ FORMER FACILITY
- ▭ BUILDING
- FENCE LINE
- CONTAINMENT BERM
- CONTAINMENT WALL

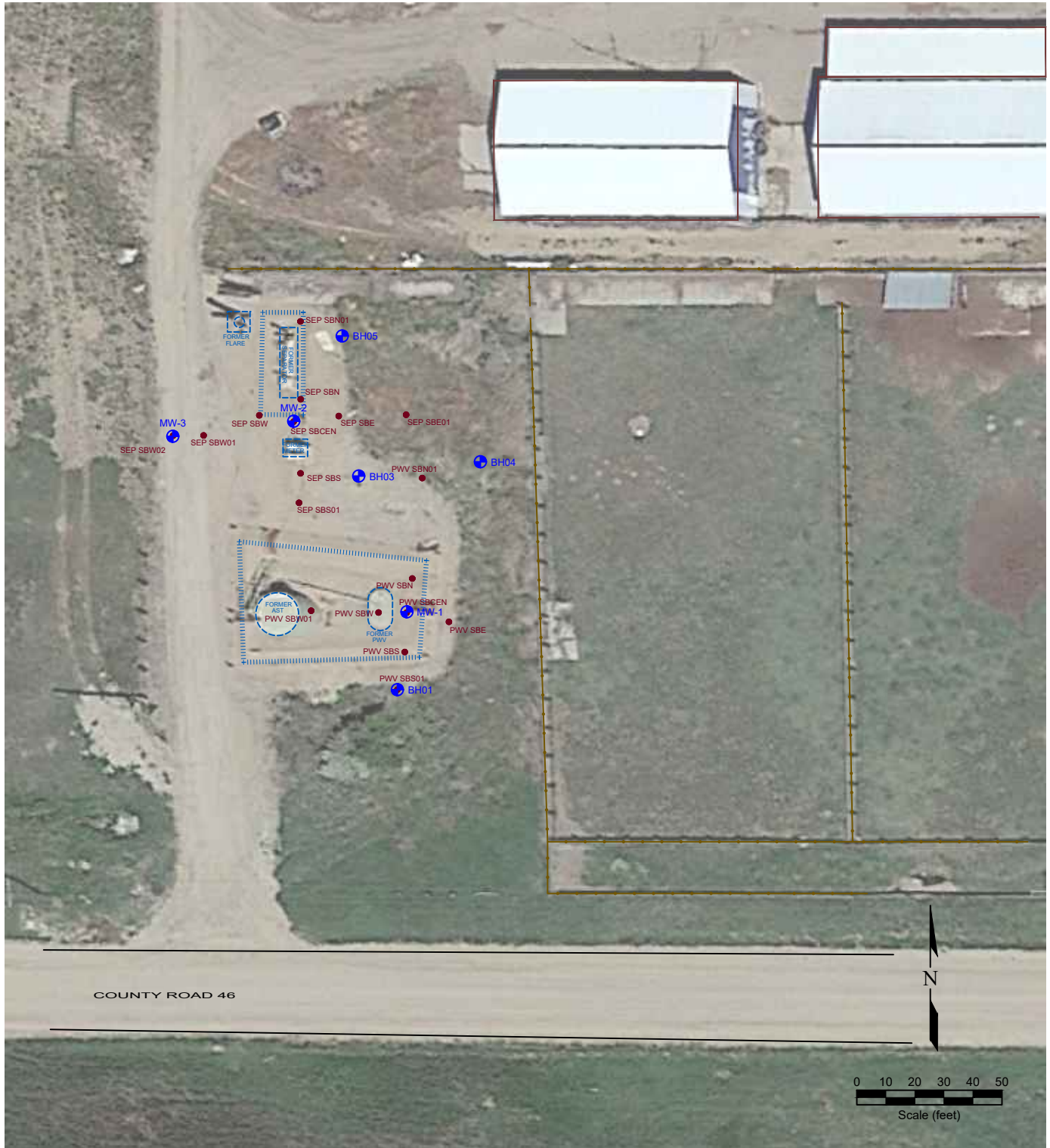
SAMPLE	DATE	DEPTH (ft)	SAMPLE ID	DATE SAMPLED	DEPTH (ft)
As	<0.01	ARSENIC (mg/kg)	pH	<0.01	SAR (unit)
Ba	<0.01	BARIUM (mg/kg)	EC	7.08	pH (pH units)
Cd	<0.01	CADMIUM (mg/kg)	EC	<1	EC (microsiemens)
Cr(V)	<0.05	CHROMIUM (mg/kg)	B	<5	BORON (mg/L)
Cu	<0.01	COPPER (mg/kg)			
Pb	<0.05	LEAD (mg/kg)			
Ni	<0.05	NICKEL (mg/kg)			
Se	<0.1	SELENIUM (mg/kg)			
Ag	<0.05	SILVER (mg/kg)			
Zn	<0.05	ZINC (mg/kg)			

Figure 7
BACKGROUND SAMPLE SOIL CHEMISTRY MAP

NOBLE ~ KNAUB 64N65W 9SW SW
 SWSW Sec. 9, T4N, R65W, 6th PM
 Weld County, Colorado
 40.320238°, -104.673833°

Project No. C024-021	API #	Facility # 328257
Date 2/5/25	Remediation # 30788	Filename 24021QFC





LEGEND

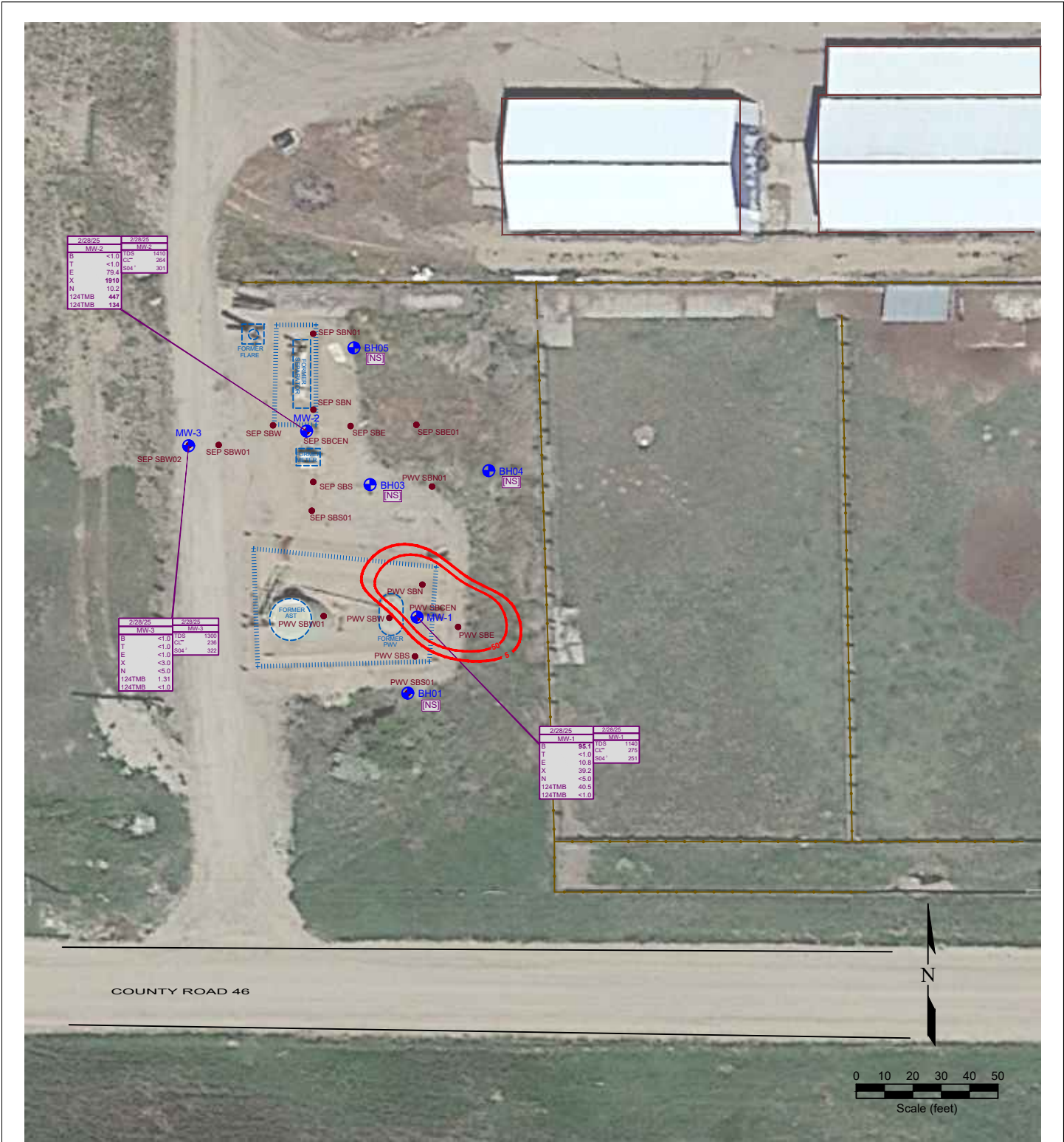
- SOIL BORING LOCATION
- ⊕ MONITORING WELL LOCATION
- ABOVE GROUND STORAGE TANK
- ▭ FORMER FACILITY
- ▭ BUILDING
- FENCE LINE
- ▬ CONTAINMENT BERM
- CONTAINMENT WALL

Figure 2A
MONITORING WELL SITE MAP

NOBLE ~ KNAUB 64N65W 9SW SW
 SWSW Sec. 9, T4N, R65W, 6th PM
 Weld County, Colorado
 40.320238°, -104.673833°

Project No. C024-021	API #	Facility # 328257
Date 3/12/25	Remediation # 30788	Filename 24021QFC





2/28/25		2/28/25	
MW-2		MW-2	
B	<1.0	105	1410
T	<1.0	CC	264
E	79.4	SO4	301
X	1910		
N	10.2		
124TMB	447		
124TMB	134		

2/28/25		2/28/25	
MW-3		MW-3	
B	<1.0	105	1300
T	<1.0	CC	236
E	<1.0	SO4	322
X	<3.0		
N	<5.0		
124TMB	1.31		
124TMB	<1.0		

2/28/25		2/28/25	
MW-1		MW-1	
B	95.1	105	1410
T	<1.0	CC	275
E	10.8	SO4	251
X	59.2		
N	<5.0		
124TMB	40.5		
124TMB	<1.0		

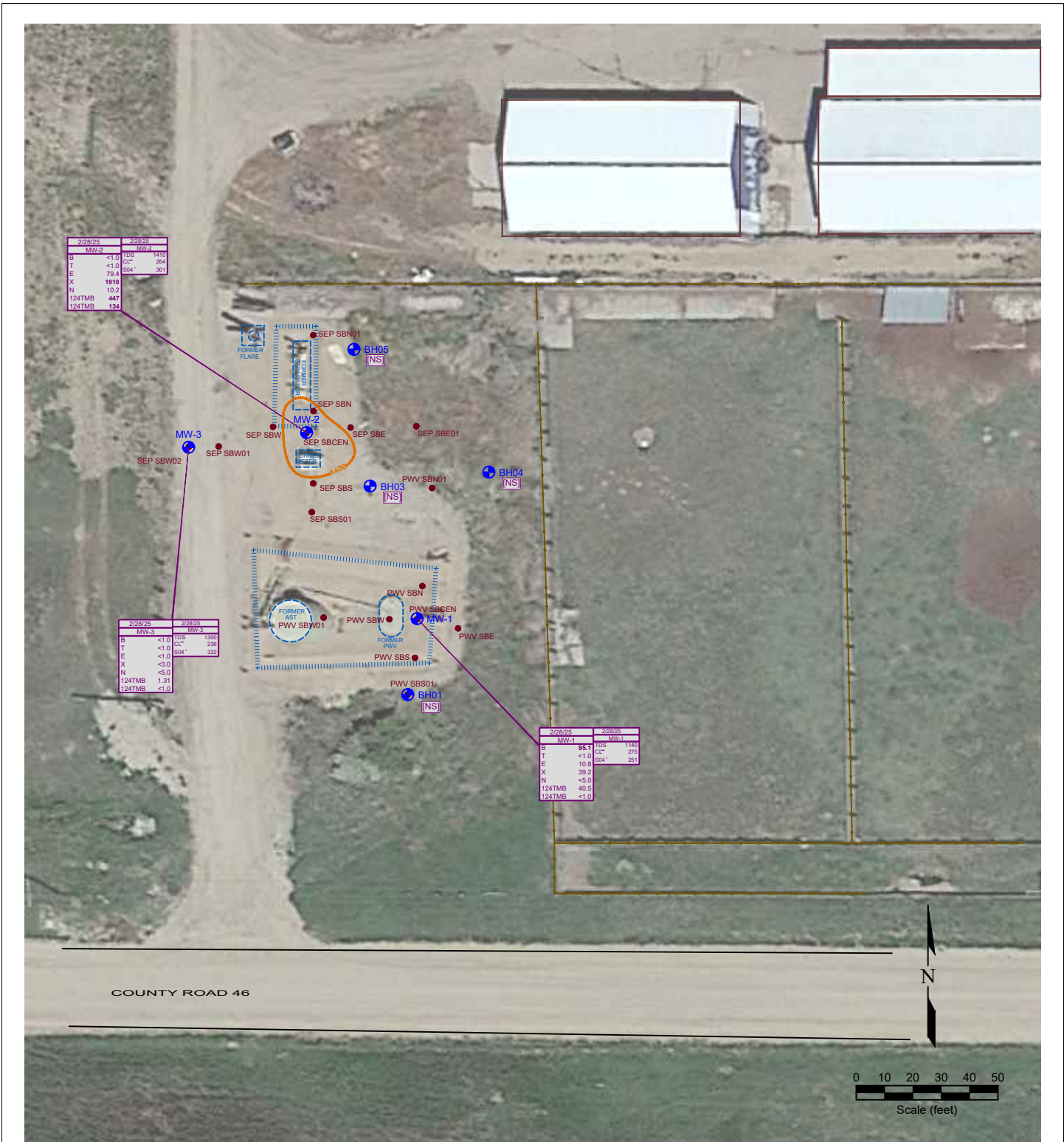
LEGEND

- SOIL BORING LOCATION
- MONITORING WELL LOCATION
- ABOVE GROUND STORAGE TANK
- FORMER FACILITY
- BUILDING
- BUILDING
- FENCE LINE
- ||||| CONTAINMENT BERM
- CONTAINMENT WALL
- NS NOT SAMPLED
- 01/17/2025 DATE SAMPLED
- MW-1 SAMPLE ID
- B <1.0 BENZENE (ug/L)
- T <1.0 TOLUENE (ug/L)
- E <1.0 ETHYLBENZENE (ug/L)
- X <2.0 TOTAL XYLENES (ug/L)
- N <1.0 NAPHTHALENE (ug/L)
- 124TMB <1.0 1,2,4-TRIMETHYLBENZENE (ug/L)
- 124TMB <1.0 1,3,5-TRIMETHYLBENZENE (ug/L)
- 01/17/2025 DATE SAMPLED
- MW-3 SAMPLE ID
- TDS 748 TOTAL DISSOLVED SOLIDS (mg/L)
- CC 263 CHLORIDE ION (mg/L)
- SO4 338 SULFATE ION (mg/L)
- 5-7 BENZENE ISOCONCENTRATION (ug/L)
- Dashed where inferred

Figure 4A
**GROUNDWATER CHEMISTRY WITH
 BENZENE ISO-CONCENTRATION MAP**

**NOBLE ~ KNAUB 64N65W 9SW SW
 SWSW Sec. 9, T4N, R65W, 6th PM**
 Weld County, Colorado
 40.320238°, -104.673833°

Project No. C024-021	API #	Facility # 328257	
Date 3/12/25	Remediation # 30788	Filename 24021QFC	



2/28/25		2/28/25	
MW-2		MW-2	
B	<1.0	108	1410
T	<1.0	CC	264
E	79.4	SO4	301
X	1910		
N	10.2		
124TMB	447		
124TMB	134		

2/28/25		2/28/25	
MW-3		MW-3	
B	<1.0	108	1300
T	<1.0	CC	239
E	<1.0	SO4	322
X	<3.0		
N	<5.0		
124TMB	1.31		
124TMB	<1.0		

2/28/25		2/28/25	
MW-1		MW-1	
B	95.1	108	1401
T	<1.0	CC	275
E	10.8	SO4	251
X	39.2		
N	<5.0		
124TMB	40.5		
124TMB	<1.0		

LEGEND

- SOIL BORING LOCATION
- ABOVE GROUND STORAGE TANK
- MONITORING WELL LOCATION
- FORMER FACILITY
- BUILDING
- BUILDING
- FENCE LINE
- ||||| CONTAINMENT BERM
- CONTAINMENT WALL

NS NOT SAMPLED

01/17/2025	DATE SAMPLED		
MW-1	SAMPLE ID		
B	<1.0	BENZENE (ug/L)	
T	<1.0	TOLUENE (ug/L)	
E	<1.0	ETHYLBENZENE (ug/L)	
X	<2.0	TOTAL XYLENES (ug/L)	
N	<1.0	NAPHTHALENE (ug/L)	
124TMB	<1.0	1,2,4-TRIMETHYLBENZENE (ug/L)	
124TMB	<1.0	1,3,5-TRIMETHYLBENZENE (ug/L)	

01/17/2025	DATE SAMPLED		
MW-1	SAMPLE ID		
TDS	748	TOTAL DISSOLVED SOLIDS (mg/L)	
CL	26.3	CHLORIDE ION (mg/L)	
SO4	338	SULFATE ION (mg/L)	

XYLENES ISO-CONCENTRATION (ug/L)
Dashed where inferred

Figure 5A
**GROUNDWATER CHEMISTRY WITH
XYLENES ISO-CONCENTRATION MAP**

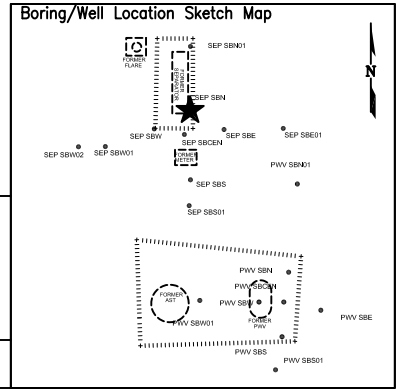
**NOBLE ~ KNAUB 64N65W 9SWSW
SWSW Sec. 9, T4N, R65W, 6th PM**
Weld County, Colorado
40.320238°, -104.673833°

Project No. C024-021	API #	Facility # 328257
Date 3/12/25	Remediation # 30788	Filename 24021QFC





BORING/WELL CONSTRUCTION LOG



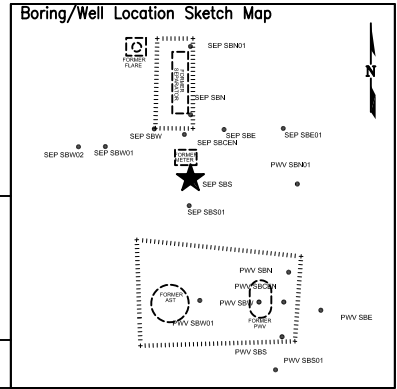
Page 1 of 1

Boring/Well No. SEP SBN		Total Depth 12'	Location Noble Energy, Inc. Knaub 64N65W 9SWSW SWSW Sec. 9, T4N, R65W, 6th PM Weld County, Colorado			
Project No./Name C024-021 / Noble Knaub 64N65W 9SWSW		Drilling Contractor/Driller DrillPro				
Geologist/Office Stanley Gilbert / Fremont Environmental, Inc.		Approved By				
Drilling Equipment/Method Geoprobe		Size/Type of Bit 2.5" direct push	Sampling Method direct push	Start/Finish Date 11/20/2024		
Well Installed? Yes <input type="checkbox"/> No <input checked="" type="checkbox"/>		Casing Mtrl./Dia.	Screen: Type . Mtrl. . Length . Dia. . Slot Size .			
Elevation of: (ft. above datum)		Ground Surface	Top of Well Casing	Top of Screen	Bottom of Screen	Ground Water Surface/Date Measured

DEPTH (feet)	WELL CONSTRUCTION			LITHOLOGY		Penetration Rate (blows/6")	Recovery (%)	Sample Interval (feet)	PID Values (ppm)
				GRAPHIC LOG	VISUAL DESCRIPTION				
5				SP	Sand: brown, fine to coarse grained, no HC odor or staining		25%		NA
					NA				
					NA				
					1.0				
					0.3				
					50%				
					154.0				
					14.3				
					8.3				
					0.1				
10					Sand: brown to 6' then gray staining, HC odor to 6.5', water at 6', brown sand 8', the organic layer		80%		0.0
					0.1				
					0.1				
					0.0				
15								0.0	
								0.0	
								0.0	
								0.0	
20								0.0	
								0.0	
								0.0	
								0.0	



BORING/WELL CONSTRUCTION LOG



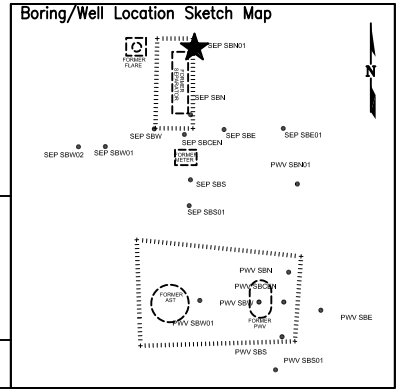
Page 1 of 1

Boring/Well No. SEP SBS		Total Depth 12'	Location Noble Energy, Inc. Knaub 64N65W 9SWSW SWSW Sec. 9, T4N, R65W, 6th PM Weld County, Colorado			
Project No./Name C024-021 / Noble Knaub 64N65W 9SWSW		Drilling Contractor/Driller DrillPro				
Geologist/Office Stanley Gilbert / Fremont Environmental, Inc.		Approved By				
Drilling Equipment/Method Geoprobe		Size/Type of Bit 2.5" direct push	Sampling Method direct push	Start/Finish Date 11/20/2024		
Well Installed? Yes <input type="checkbox"/> No <input checked="" type="checkbox"/>		Casing Mtrl./Dia.	Screen: Type . Mtrl. . Length . Dia. . Slot Size .			
Elevation of: (ft. above datum)		Ground Surface	Top of Well Casing	Top of Screen	Bottom of Screen	Ground Water Surface/Date Measured

DEPTH (feet)	WELL CONSTRUCTION			LITHOLOGY		Penetration Rate (blows/6")	Recovery (%)	Sample Interval (feet)	PID Values (ppm)
				GRAPHIC LOG	VISUAL DESCRIPTION				
5	[Well Construction Diagram]			SP	Sand: brown, fine to coarse grained, no HC odor or staining	40%	60%	150.9	NA
					Sand: black staining, fine to coarse grained, strong HC odor or staining, water at 6', clears up at 7' to brown sands				0.0
					Sand: brown, fine to coarse grained, no HC odor or staining				0.0
									0.0
									71.9
									19.2
									7.6
									13.6
									4.0
									0.2
10	[Well Construction Diagram]			TD 12'		100%	0.0	0.0	
								0.0	
15	[Well Construction Diagram]			TD 12'		100%	0.0	0.0	
								0.0	
								0.0	
								0.0	
								0.0	
								0.0	
								0.0	
								0.0	
								0.0	
								0.0	
20	[Well Construction Diagram]			TD 12'		100%	0.0	0.0	
								0.0	



BORING/WELL CONSTRUCTION LOG



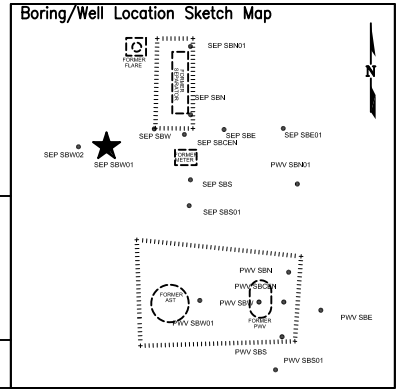
Page 1 of 1

Boring/Well No. SEP SBN01		Total Depth 12'	Location Noble Energy, Inc. Knaub 64N65W 9SWSW SWSW Sec. 9, T4N, R65W, 6th PM Weld County, Colorado			
Project No./Name C024-021 / Noble Knaub 64N65W 9SWSW		Drilling Contractor/Driller DrillPro				
Geologist/Office Stanley Gilbert / Fremont Environmental, Inc.		Approved By				
Drilling Equipment/Method Geoprobe		Size/Type of Bit 2.5" direct push	Sampling Method direct push	Start/Finish Date 11/20/2024		
Well Installed? Yes <input type="checkbox"/> No <input checked="" type="checkbox"/>		Casing Mtrl./Dia.	Screen: Type . Mtrl. . Length . Dia. . Slot Size .			
Elevation of: (ft. above datum)		Ground Surface	Top of Well Casing	Top of Screen	Bottom of Screen	Ground Water Surface/Date Measured

DEPTH (feet)	WELL CONSTRUCTION			LITHOLOGY		Penetration Rate (blows/6")	Recovery (%)	Sample Interval (feet)	PID Values (ppm)
				GRAPHIC LOG	VISUAL DESCRIPTION				
5			SP	Sand: brown, fine to coarse grained, no HC odor or staining		40%		NA	
10						50%		0.2	
15						70%		0.0	
20					TD 12'			0.0	



BORING/WELL CONSTRUCTION LOG



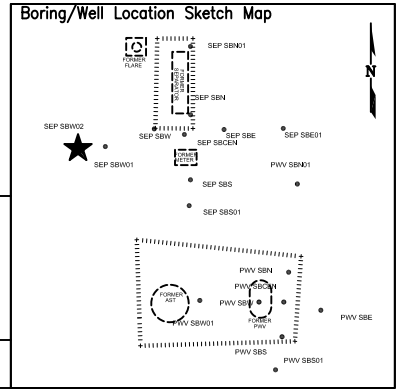
Page 1 of 1

Boring/Well No. SEP SBW01		Total Depth 12'	Location Noble Energy, Inc. Knaub 64N65W 9SWSW SWSW Sec. 9, T4N, R65W, 6th PM Weld County, Colorado				
Project No./Name C024-021 / Noble Knaub 64N65W 9SWSW		Drilling Contractor/Driller DrillPro					
Geologist/Office Stanley Gilbert / Fremont Environmental, Inc.		Approved By					
Drilling Equipment/Method Geoprobe		Size/Type of Bit 2.5" direct push	Sampling Method direct push	Start/Finish Date 11/20/2024			
Well Installed? Yes <input type="checkbox"/> No <input checked="" type="checkbox"/>		Casing Mtrl./Dia.	Screen: Type .	Mtrl. .	Length .	Dia. .	Slot Size .
Elevation of: (ft. above datum)		Ground Surface	Top of Well Casing	Top of Screen	Bottom of Screen	Ground Water Surface/Date Measured	

DEPTH (feet)	WELL CONSTRUCTION			LITHOLOGY		Penetration Rate (blows/6")	Recovery (%)	Sample Interval (feet)	PID Values (ppm)
				GRAPHIC LOG	VISUAL DESCRIPTION				
5				SP	Sand: brown to gray, fine		60%	NA	0.8
								8.5	
								2.7	
								1.5	
								223.8	
								128.8	
								110.5	
								187.3	
								6.7	
								2.4	
10					- wet at 6'		100%	7.4	
15									
20									



BORING/WELL CONSTRUCTION LOG



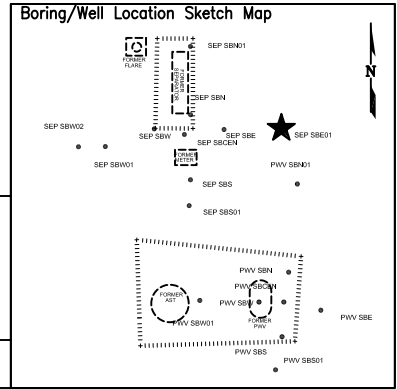
Page 1 of 1

Boring/Well No. SEP SBW02		Total Depth 12'	Location Noble Energy, Inc. Knaub 64N65W 9SWSW SWSW Sec. 9, T4N, R65W, 6th PM Weld County, Colorado			
Project No./Name C024-021 / Noble Knaub 64N65W 9SWSW		Drilling Contractor/Driller DrillPro				
Geologist/Office Stanley Gilbert / Fremont Environmental, Inc.		Approved By				
Drilling Equipment/Method Geoprobe		Size/Type of Bit 2.5" direct push	Sampling Method direct push	Start/Finish Date 11/20/2024		
Well Installed? Yes <input checked="" type="checkbox"/> No <input type="checkbox"/>	Casing Mtrl./Dia. PVC /1"	Screen: Type Slotted Mtrl. PVC Length 10' Dia. 1" Slot Size 0.010"				
Elevation of: (ft. above datum)	Ground Surface	Top of Well Casing	Top of Screen	Bottom of Screen	Ground Water Surface/Date Measured	

DEPTH (feet)	WELL CONSTRUCTION		LITHOLOGY		Penetration Rate (blows/6")	Recovery (%)	Sample Interval (feet)	PID Values (ppm)
			GRAPHIC LOG	VISUAL DESCRIPTION				
5	Bentonite	1" Blank	SP	Sand: brown, fine to coarse grains, no HC odor or staining		40%		NA
	#10-20 Silica Sand	1" Screen		Sand: brown, gray staining at 6' to 7', water at 6', then gray sands, slight odor, fine to coarse grains, brown sands, fine to coarse grains				0.0
10				Sand: brown		50%		0.0
								0.0
15						40%		3.7
								0.6
20								0.0
								0.0
				TD 12'				0.0



BORING/WELL CONSTRUCTION LOG



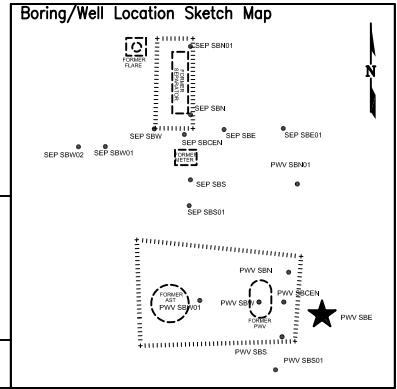
Page 1 of 1

Boring/Well No. SEP SBE01		Total Depth 12'	Location Noble Energy, Inc. Knaub 64N65W 9SWSW SWSW Sec. 9, T4N, R65W, 6th PM Weld County, Colorado				
Project No./Name C024-021 / Noble Knaub 64N65W 9SWSW		Drilling Contractor/Driller DrillPro					
Geologist/Office Stanley Gilbert / Fremont Environmental, Inc.		Approved By					
Drilling Equipment/Method Geoprobe		Size/Type of Bit 2.5" direct push	Sampling Method direct push	Start/Finish Date 11/20/2024			
Well Installed? Yes <input type="checkbox"/> No <input checked="" type="checkbox"/>		Casing Mtrl./Dia.	Screen: Type	Mtrl.	Length	Dia.	Slot Size
Elevation of: (ft. above datum)		Ground Surface	Top of Well Casing	Top of Screen	Bottom of Screen	Ground Water Surface/Date Measured	

DEPTH (feet)	WELL CONSTRUCTION			LITHOLOGY		Penetration Rate (blows/6")	Recovery (%)	Sample Interval (feet)	PID Values (ppm)
				GRAPHIC LOG	VISUAL DESCRIPTION				
5				SP	Sand: brown, fine to coarse grains, no odor, no staining		60%		NA
				NR	No recovery due to flowing sands				0.0
									0.0
									0.0
									0.0
10				SP	Sand: brown, saturated, fine to coarse grains, no HC odor or staining		100%		0.0
				0.0					
				0.0					
				0.0					
				0.0					
15									0.0
									0.0
									0.0
									0.0
									0.0
20									0.0
									0.0
									0.0
									0.0
									0.0



BORING/WELL CONSTRUCTION LOG



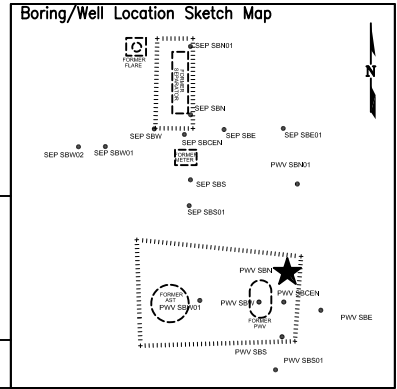
Page 1 of 1

Boring/Well No. PWV SBE		Total Depth 12'	Location Noble Energy, Inc. Knaub 64N65W 9SWW SWSW Sec. 9, T4N, R65W, 6th PM Weld County, Colorado				
Project No./Name C024-021 / Noble Knaub 64N65W 9SWW		Drilling Contractor/Driller DrillPro					
Geologist/Office Stanley Gilbert / Fremont Environmental, Inc.		Approved By					
Drilling Equipment/Method Geoprobe		Size/Type of Bit 2.5" direct push	Sampling Method direct push	Start/Finish Date 11/20/2024			
Well Installed? Yes <input type="checkbox"/> No <input checked="" type="checkbox"/>		Casing Mtrl./Dia.	Screen: Type	Mtrl.	Length	Dia.	Slot Size
Elevation of: (ft. above datum)		Ground Surface	Top of Well Casing	Top of Screen	Bottom of Screen	Ground Water Surface/Date Measured	

DEPTH (feet)	WELL CONSTRUCTION			LITHOLOGY		Penetration Rate (blows/6")	Recovery (%)	Sample Interval (feet)	PID Values (ppm)
				GRAPHIC LOG	VISUAL DESCRIPTION				
5			SP	Sand: brown, fine to medium coarse grained, no HC odor, no staining		80%		NA	
10						60%		NA	
15								0.0	
20					TD 12'			0.0	



BORING/WELL CONSTRUCTION LOG



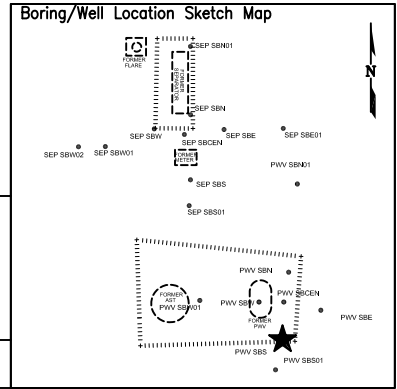
Page 1 of 1

Boring/Well No. PWV SBN		Total Depth 12'	Location Noble Energy, Inc. Knaub 64N65W 9SWW SWSW Sec. 9, T4N, R65W, 6th PM Weld County, Colorado				
Project No./Name C024-021 / Noble Knaub 64N65W 9SWW		Drilling Contractor/Driller DrillPro					
Geologist/Office Stanley Gilbert / Fremont Environmental, Inc.		Approved By					
Drilling Equipment/Method Geoprobe		Size/Type of Bit 2.5" direct push	Sampling Method direct push	Start/Finish Date 11/20/2024			
Well Installed? Yes <input type="checkbox"/> No <input checked="" type="checkbox"/>		Casing Mtrl./Dia.	Screen: Type	Mtrl.	Length	Dia.	Slot Size
Elevation of: (ft. above datum)		Ground Surface	Top of Well Casing	Top of Screen	Bottom of Screen	Ground Water Surface/Date Measured	

DEPTH (feet)	WELL CONSTRUCTION			LITHOLOGY		Penetration Rate (blows/6")	Recovery (%)	Sample Interval (feet)	PID Values (ppm)
				GRAPHIC LOG	VISUAL DESCRIPTION				
5			SP	Sand: brown, fine to medium coarse grained, no HC odor, no staining		80%		NA	
				- gray staining at 6'		60%		0.0	
								0.0	
								0.0	
								0.0	
10							90%	0.0	
								0.0	
								0.5	
								0.0	
								0.0	
15								0.0	
								0.0	
								0.0	
20								0.0	



BORING/WELL CONSTRUCTION LOG



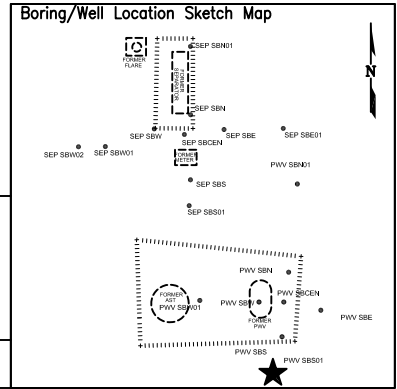
Page 1 of 1

Boring/Well No. PWV SBS		Total Depth 12'	Location Noble Energy, Inc. Knaub 64N65W 9SWSW SWSW Sec. 9, T4N, R65W, 6th PM Weld County, Colorado			
Project No./Name C024-021 / Noble Knaub 64N65W 9SWSW		Drilling Contractor/Driller DrillPro				
Geologist/Office Stanley Gilbert / Fremont Environmental, Inc.		Approved By				
Drilling Equipment/Method Geoprobe		Size/Type of Bit 2.5" direct push	Sampling Method direct push	Start/Finish Date 11/20/2024		
Well Installed? Yes <input type="checkbox"/> No <input checked="" type="checkbox"/>		Casing Mtrl./Dia.	Screen: Type . Mtrl. . Length . Dia. . Slot Size .			
Elevation of: (ft. above datum)		Ground Surface	Top of Well Casing	Top of Screen	Bottom of Screen	Ground Water Surface/Date Measured

DEPTH (feet)	WELL CONSTRUCTION			LITHOLOGY		Penetration Rate (blows/6")	Recovery (%)	Sample Interval (feet)	PID Values (ppm)																								
				GRAPHIC LOG	VISUAL DESCRIPTION																												
5	[Empty Well Construction Columns]			SP	Sand: brown, fine to medium coarse grained, no HC odor, no staining	25%	25%	NA	NA																								
					Sand: brown and gray, fine to coarse, HC odor and staining					60%	227.3	0.6																					
					Sand: brown, fine to coarse, slight staining at 9', no odor, water at 10'								80%	4.7	2.1																		
																0.0	0.0	0.0															
																			0.0	0.0	0.0												
																						0.0	0.0	0.0									
																									0.0	0.0	0.0						
																												0.0	0.0	0.0			
																															0.0	0.0	0.0
	0.0	0.0	0.0																														
				0.0	0.0	0.0																											
							0.0	0.0	0.0																								
										0.0	0.0	0.0																					
													0.0	0.0	0.0																		
																0.0	0.0	0.0															
																			0.0	0.0	0.0												
																						0.0	0.0	0.0									
																									0.0	0.0	0.0						
																												0.0	0.0	0.0			
	0.0	0.0	0.0																														
				0.0	0.0	0.0																											
							0.0	0.0	0.0																								
										0.0	0.0	0.0																					
													0.0	0.0	0.0																		
																0.0	0.0	0.0															
																			0.0	0.0	0.0												
																						0.0	0.0	0.0									
																									0.0	0.0	0.0						
																												0.0	0.0	0.0			
	0.0	0.0	0.0																														
				0.0	0.0	0.0																											
							0.0	0.0	0.0																								
										0.0	0.0	0.0																					
													0.0	0.0	0.0																		
																0.0	0.0	0.0															
																			0.0	0.0	0.0												
																						0.0	0.0	0.0									
																									0.0	0.0	0.0						
																												0.0	0.0	0.0			
	0.0	0.0	0.0																														
				0.0	0.0	0.0																											
							0.0	0.0	0.0																								
										0.0	0.0	0.0																					
													0.0	0.0	0.0																		
																0.0	0.0	0.0															
																			0.0	0.0	0.0												
																						0.0	0.0	0.0									
																									0.0	0.0	0.0						
																												0.0	0.0	0.0			
	0.0	0.0	0.0																														
				0.0	0.0	0.0																											
							0.0	0.0	0.0																								
										0.0	0.0	0.0																					
													0.0	0.0	0.0																		
																0.0	0.0	0.0															
																			0.0	0.0	0.0												
																						0.0	0.0	0.0									
																									0.0	0.0	0.0						
																												0.0	0.0	0.0			
	0.0	0.0	0.0																														
				0.0	0.0	0.0																											
							0.0	0.0	0.0																								
										0.0	0.0	0.0																					
													0.0	0.0	0.0																		
																0.0	0.0	0.0															
																			0.0	0.0	0.0												
																						0.0	0.0	0.0									
																									0.0	0.0	0.0						
																												0.0	0.0	0.0			
	0.0	0.0	0.0																														
				0.0	0.0	0.0																											
							0.0	0.0	0.0																								
										0.0	0.0	0.0																					
													0.0	0.0	0.0																		
																0.0	0.0	0.0															
																			0.0	0.0	0.0												
																						0.0	0.0	0.0									
																									0.0	0.0	0.0						
																												0.0	0.0	0.0			
	0.0	0.0	0.0																														
				0.0	0.0	0.0																											
							0.0	0.0	0.0																								
										0.0	0.0	0.0																					
													0.0	0.0	0.0																		
																0.0	0.0	0.0															
																			0.0	0.0	0.0												
																						0.0	0.0	0.0									
																									0.0	0.0	0.0						
																												0.0	0.0	0.0			
	0.0	0.0	0.0																														
				0.0	0.0	0.0																											
							0.0	0.0	0.0																								
										0.0	0.0	0.0																					
													0.0	0.0	0.0																		
																0.0	0.0	0.0															
																			0.0	0.0	0.0												
																						0.0	0.0	0.0									
																									0.0	0.0	0.0						
																												0.0	0.0	0.0			
	0.0	0.0	0.0																														
				0.0	0.0	0.0																											
							0.0	0.0	0.0																								
										0.0	0.0	0.0																					
													0.0	0.0	0.0																		
																0.0	0.0	0.0															
																			0.0	0.0	0.0												
																						0.0	0.0	0.0									
																									0.0	0.0	0.0						
																												0.0	0.0	0.0			



BORING/WELL CONSTRUCTION LOG



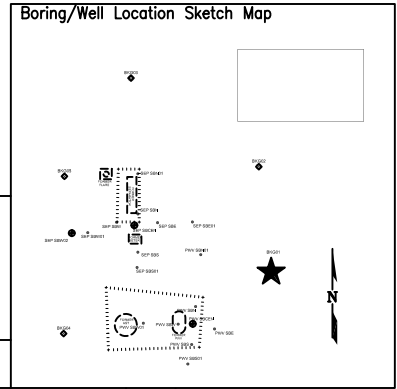
Page 1 of 1

Boring/Well No. PWV SBS01		Total Depth 12'	Location Noble Energy, Inc. Knaub 64N65W 9SWSW SWSW Sec. 9, T4N, R65W, 6th PM Weld County, Colorado				
Project No./Name C024-021 / Noble Knaub 64N65W 9SWSW		Drilling Contractor/Driller DrillPro					
Geologist/Office Stanley Gilbert / Fremont Environmental, Inc.		Approved By					
Drilling Equipment/Method Geoprobe		Size/Type of Bit 2.5" direct push	Sampling Method direct push	Start/Finish Date 11/20/2024			
Well Installed? Yes <input type="checkbox"/> No <input checked="" type="checkbox"/>		Casing Mtrl./Dia.	Screen: Type .	Mtrl. .	Length .	Dia. .	Slot Size .
Elevation of: (ft. above datum)		Ground Surface	Top of Well Casing	Top of Screen	Bottom of Screen	Ground Water Surface/Date Measured	

DEPTH (feet)	WELL CONSTRUCTION			LITHOLOGY		Penetration Rate (blows/6")	Recovery (%)	Sample Interval (feet)	PID Values (ppm)
				GRAPHIC LOG	VISUAL DESCRIPTION				
5			SP	Sand: brown, fine to coarse grained, no HC odor or staining		40%		NA	
				- water at 6'		100%		0.0	
10						80%		0.0	
				TD 12'				0.0	
15								0.0	
20								0.0	



BORING/WELL CONSTRUCTION LOG



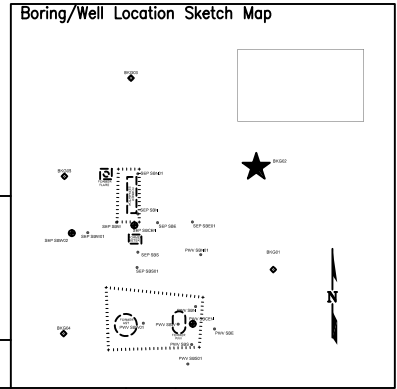
Page 1 of 1

Boring/Well No. BKG01		Total Depth 8'	Location Noble Energy, Inc. Knaub 64N65W 9SWSW SWSW Sec. 9, T4N, R65W, 6th PM Weld County, Colorado			
Project No./Name C024-021 / Noble Knaub 64N65W 9SWSW		Drilling Contractor/Driller DrillPro				
Geologist/Office Stanley Gilbert / Fremont Environmental, Inc.		Approved By				
Drilling Equipment/Method Geoprobe		Size/Type of Bit 2.5" direct push	Sampling Method direct push	Start/Finish Date 11/20/2024		
Well Installed? Yes <input type="checkbox"/> No <input checked="" type="checkbox"/>		Casing Mtrl./Dia.	Screen: Type . Mtrl. . Length . Dia. . Slot Size .			
Elevation of: (ft. above datum)		Ground Surface	Top of Well Casing	Top of Screen	Bottom of Screen	Ground Water Surface/Date Measured

DEPTH (feet)	WELL CONSTRUCTION			LITHOLOGY		Penetration Rate (blows/6")	Recovery (%)	Sample Interval (feet)	PID Values (ppm)
				GRAPHIC LOG	VISUAL DESCRIPTION				
5	[Well Construction Diagram]			SP	Sand: brown, fine to coarse grains		50%		0.0
				- water at 4'	Sand: flowing sands, brown, fine to coarse grains		10%		
10									0.0
15									
20									



BORING/WELL CONSTRUCTION LOG



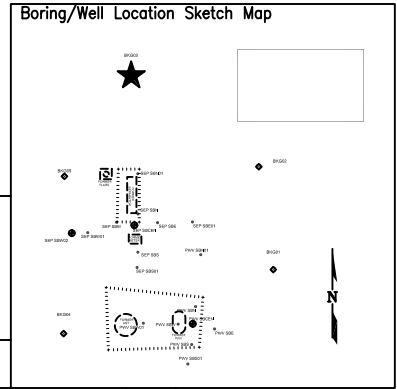
Page 1 of 1

Boring/Well No. BKG02		Total Depth 8'	Location Noble Energy, Inc. Knaub 64N65W 9SWSW SWSW Sec. 9, T4N, R65W, 6th PM Weld County, Colorado			
Project No./Name C024-021 / Noble Knaub 64N65W 9SWSW		Drilling Contractor/Driller DrillPro				
Geologist/Office Stanley Gilbert / Fremont Environmental, Inc.		Approved By				
Drilling Equipment/Method Geoprobe		Size/Type of Bit 2.5" direct push	Sampling Method direct push	Start/Finish Date 11/20/2024		
Well Installed? Yes <input type="checkbox"/> No <input checked="" type="checkbox"/>		Casing Mtrl./Dia.	Screen: Type . Mtrl. . Length . Dia. . Slot Size .			
Elevation of: (ft. above datum)		Ground Surface	Top of Well Casing	Top of Screen	Bottom of Screen	Ground Water Surface/Date Measured

DEPTH (feet)	WELL CONSTRUCTION			LITHOLOGY		Penetration Rate (blows/6")	Recovery (%)	Sample Interval (feet)	PID Values (ppm)
				GRAPHIC LOG	VISUAL DESCRIPTION				
5	[Well Construction Diagram]			SP	Sand: brown, fine to coarse grains, moist at 4'		40%		0.0
					Sand: flowing sands, brown, fine to coarse grains - water at 6'				
10									
15									
20									



BORING/WELL CONSTRUCTION LOG



Page 1 of 1

Boring/Well No. BKG03		Total Depth 8'	Location Noble Energy, Inc. Knaub 64N65W 9SWSW SWSW Sec. 9, T4N, R65W, 6th PM Weld County, Colorado			
Project No./Name C024-021 / Noble Knaub 64N65W 9SWSW		Drilling Contractor/Driller DrillPro				
Geologist/Office Stanley Gilbert / Fremont Environmental, Inc.		Approved By				
Drilling Equipment/Method Geoprobe		Size/Type of Bit 2.5" direct push	Sampling Method direct push	Start/Finish Date 11/20/2024		
Well Installed? Yes <input type="checkbox"/> No <input checked="" type="checkbox"/>		Casing Mtrl./Dia.	Screen: Type . Mtrl. . Length . Dia. . Slot Size .			
Elevation of: (ft. above datum)		Ground Surface	Top of Well Casing	Top of Screen	Bottom of Screen	Ground Water Surface/Date Measured

DEPTH (feet)	WELL CONSTRUCTION			LITHOLOGY		Penetration Rate (blows/6")	Recovery (%)	Sample Interval (feet)	PID Values (ppm)
				GRAPHIC LOG	VISUAL DESCRIPTION				
5	[Well Construction Diagram]			SP	Sand: brown, fine to coarse grains		40%		0.0
					- water at 6'				
10							60%		0.0
					TD 8'				
15									
20									

APPENDIX

SAMPLING METHODS AND PROCEDURES

Water Level Measurements

All groundwater level measurements will be obtained using an electric measuring device, which indicates when a probe is in contact with groundwater. Measurements will be obtained by lowering the device into the well until the water surface had been encountered, and by measuring the distance from the top of the inside riser pipe to the probe. All the measurements will be recorded to the nearest 0.01 ft. To minimize cross-contamination, the water level indicator will be decontaminated with isopropyl alcohol and distilled water between each well.

Monitoring Well Sampling

All monitoring wells were sampled from the “cleanest” to the “most contaminated” according to the protocols listed below.

Field Protocol

- Step 1 Measure water level in each well.
- Step 2 Purge each monitoring well by evacuating a minimum of three well bore volumes using a disposable polyethylene bailer.
- Step 3 Collect water samples using a disposable polyethylene bailer.
- Step 4 Cool samples to approximately 4°C for transportation.
- Step 5 Store water samples and transport to a specific laboratory, following all documentation and chain-of-custody procedures.

Upon completion of groundwater sampling, a chain-of-custody log will be completed. Chain-of-custody records include the following information: project, project number, shipped by, shipped to, suspected hazard, sampling point, location, field identification number, date collected, sample type, number of containers, analysis required, and sampler's signature.

The chain-of-custody records will be shipped with the samples to the laboratory. Upon arrival at the laboratory the samples will be checked in and signed by the appropriate laboratory personnel. Laboratory identification numbers will be noted on the chain-of-custody record. Upon completion of the laboratory analysis, the completed chain-of-custody record will be returned to the project manager.

Analytical Methods

The following list identifies the various chemical constituents and analytical methods which will be used for their quantification.

<u>Chemical Parameter</u>	<u>Method</u>
Benzene, Toluene, Ethylbenzene and Total Xylenes (BTEX)	EPA Method – 8260B
1,2,4- and 1,3,5-Trimethylbenzene and Naphthalene	EPA Method – 8260B
Chloride and Sulfate Anions	EPA Method – 300.0
Total Dissolved Solids (TDS)	Standard Method 2540C