




LEGEND

-  WELLHEAD ASSESSMENT BOUNDARIES
-  **SS-02** APPROXIMATE LOCATION OF SOIL SAMPLES FIELD SCREENED, ONLY, WITH PHOTOIONIZATION DETECTOR
-  APPROXIMATE LOCATION OF SOIL SAMPLES SUBMITTED FOR LABORATORY ANALYSIS

Re-sample for Full Table 915-1 Suite

BACKGROUND-01

WH-N
 WH-SS-01
 WH-SS-02
 WH-SS-04
 WH-W
 WH-E
 WH-FS-01
 WH-SS-03
 WH-S

PROPOSED SITE INVESTIGATION PLAN
 ROUSE USX A #05-06 CLOSURE ASSESSMENT
 40.516436 / -104.575912
 SE¼ NW¼ SEC.5 T6N R64W 6PM
 WELD COUNTY, COLORADO
 API # 05-123-29405 REMEDIATION # 33055

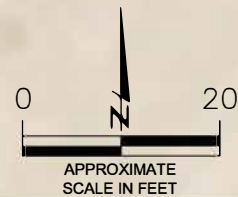


FIGURE NO.

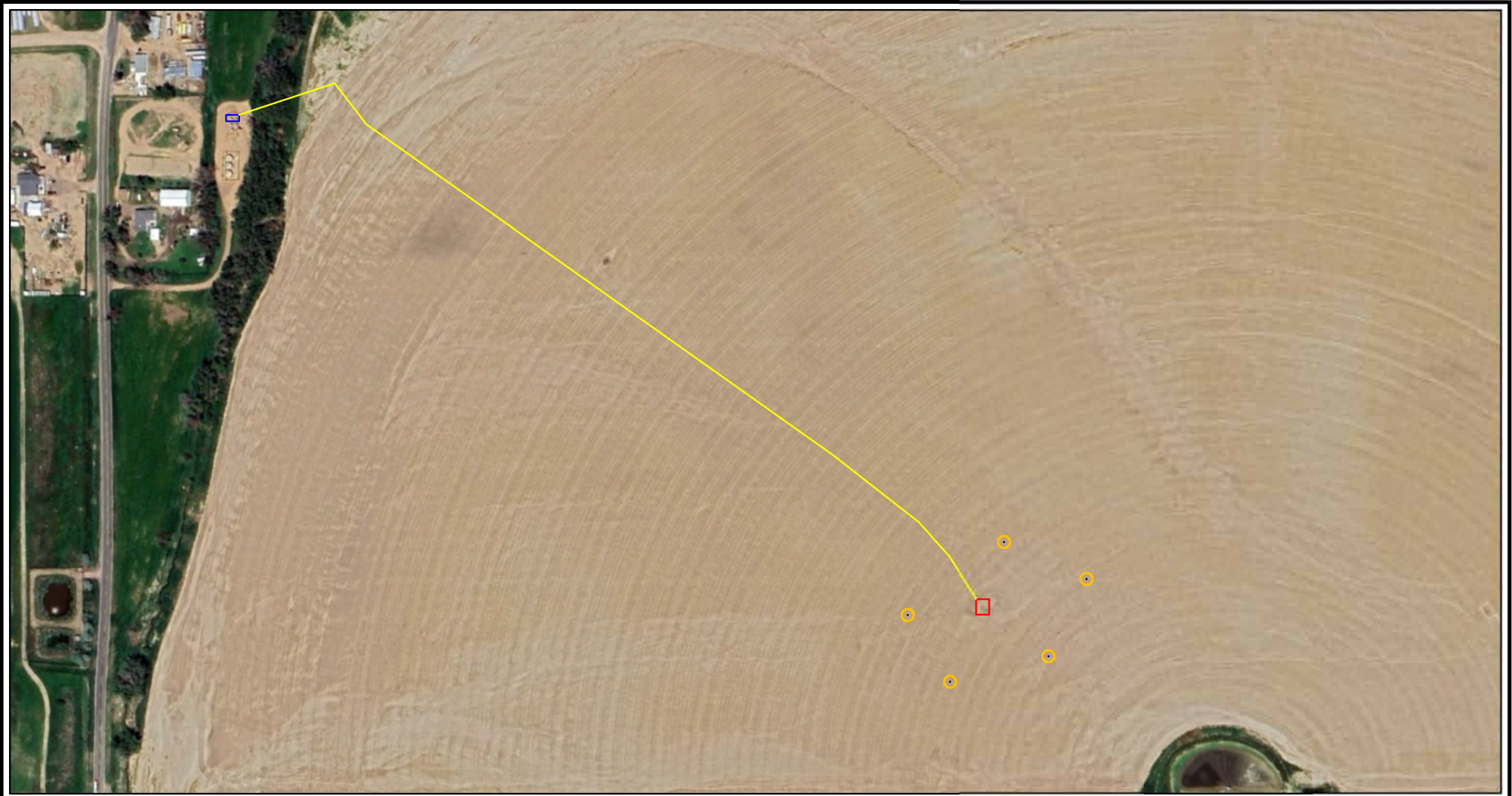
1

DRAWN BY:

RS

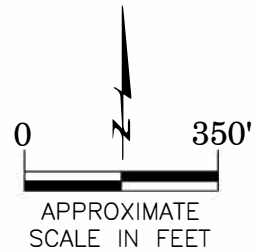


EAGLE
 ENVIRONMENTAL
 CONSULTING, LLC
 8000 W 44th Ave, Wheat Ridge, CO 80033
 Ph: 303-433-0479 • F: 303-325-5449



LEGEND

- FORMER ROUSE USX A #05-06 WELLHEAD (PLUGGED AND ABANDONED)
- ASSOCIATED SEPARATOR
- APPROXIMATE FLOWLINE LOCATION
- Proposed Background Sample locations**



PROPOSED BACKGROUND SAMPLE LOCATIONS
 ROUSE USX A #05-06 CLOSURE ASSESSMENT
 40.516436 / -104.575912
 SE¼ NW¼ SEC.5 T6N R64W 6PM
 WELD COUNTY, COLORADO
 API # 05-123-29405 REMEDIATION # 33055

FIGURE NO.
2

DRAWN BY:
RS



EAGLE
 ENVIRONMENTAL
 CONSULTING, LLC
 8000 W 44th Ave, Wheat Ridge, CO 80033
 Ph: 303-433-0479 · F: 303-325-5449