

TABLE 1
FIELD DATA SUMMARY TABLE
NOBLE - 100322
DILLER 42-13 TANK BATTERY, WELD COUNTY, COLORADO
REM # 27091

Sample ID	Sample Date	Depth (ft. bgs)	GPS Data Latitude/Longitude		PDOP Value	VOC Concentration (ppm)
AST01@0-6"	5/28/2024	0.5	40.225301	-104.609605	0.9	0.0
FLARE01@0-6"	5/28/2024	0.5	40.225592	-104.609636	0.8	0.4
MH01@0-6"	5/28/2024	0.5	40.225552	-104.609569	0.9	0.3
PWV01-B@5'	5/28/2024	5	40.225346	-104.609582	0.8	0.4
PWV01-N@2.5'	5/28/2024	2.5	40.225368	-104.609577	0.8	0.2
PWV01-E@2.5'	5/28/2024	2.5	40.225343	-104.609553	0.8	0.5
PWV01-S@2.5'	5/28/2024	2.5	40.225325	-104.609583	0.9	14.7
PWV01-W@2.5'	5/28/2024	2.5	40.225348	-104.609614	0.8	0.8
SEP01-DL@2.5'	5/28/2024	2.5	40.225515	-104.609589	0.9	12.9
SEP01-FL@2.5'	5/28/2024	2.5	40.225569	-104.609607	0.8	0.0
SB01@5-6'	2/25/2025	5-6	40.225344	-104.609584	NC	0.0
SB01@10'	2/25/2025	10	40.225344	-104.609584	NC	0.0
SB02@5-6'	2/25/2025	5-6	40.225390	-104.609583	NC	0.0
SB03@5-6'	2/25/2025	5-6	40.225343	-104.609522	NC	0.0
SB04@0.5-1'	2/25/2025	0.5-1	40.225344	-104.609649	NC	0.0
SB04@5-6'	2/25/2025	5-6	40.225344	-104.609649	NC	0.0
SB05@0.5-1'	2/25/2025	0.5-1	40.225300	-104.609611	NC	0.0
SB05@5-6'	2/25/2025	5-6	40.225300	-104.609611	NC	0.1
SB06@0.5-1'	2/25/2025	0.5-1	40.225299	-104.609542	NC	0.0
SB07@0.5-1'	2/25/2025	0.5-1	40.225255	-104.609610	NC	0.0
SB08@0.5-1'	2/25/2025	0.5-1	40.225301	-104.609669	NC	0.0
BKG01@0-6"	5/28/2024	0.5	40.225611	-104.609826	1.0	0.0
BKG01@2.5'	5/28/2024	2.5	40.225611	-104.609826	1.0	0.9

TABLE 1
FIELD DATA SUMMARY TABLE
NOBLE - 100322
DILLER 42-13 TANK BATTERY, WELD COUNTY, COLORADO
REM # 27091

Sample ID	Sample Date	Depth (ft. bgs)	GPS Data Latitude/Longitude		PDOP Value	VOC Concentration (ppm)
BKG01@5'	5/28/2024	5	40.225611	-104.609826	1.0	0.2
BKG02@2-3'	2/25/2025	2-3	40.225475	-104.609904	NC	0.0
BKG02@5-6'	2/25/2025	5-6	40.225475	-104.609904	NC	0.0
BKG02@6-7'	2/25/2025	6-7	40.225475	-104.609904	NC	0.0
BKG02@8-9'	2/25/2025	8-9	40.225475	-104.609904	NC	0.0
BKG02@9-10'	2/25/2025	9-10	40.225475	-104.609904	NC	0.0
BKG03@2-3'	2/25/2025	2-3	40.225100	-104.609612	NC	0.0
BKG03@5-6'	2/25/2025	5-6	40.225100	-104.609612	NC	0.0
BKG03@6-7'	2/25/2025	6-7	40.225100	-104.609612	NC	0.0
BKG03@8-9'	2/25/2025	8-9	40.225100	-104.609612	NC	0.0
BKG03@9-10'	2/25/2025	9-10	40.225100	-104.609612	NC	0.0
BKG04@2-3'	2/25/2025	2-3	40.225320	-104.610043	NC	0.0
BKG04@5-6'	2/25/2025	5-6	40.225320	-104.610043	NC	0.0
BKG04@6-7'	2/25/2025	6-7	40.225320	-104.610043	NC	0.0
BKG04@8-9'	2/25/2025	8-9	40.225320	-104.610043	NC	0.0
BKG04@9-10'	2/25/2025	9-10	40.225320	-104.610043	NC	0.0
BKG05@2-3'	2/25/2025	2-3	40.225430	-104.609266	NC	0.0
BKG05@5-6'	2/25/2025	5-6	40.225430	-104.609266	NC	0.0
BKG05@6-7'	2/25/2025	6-7	40.225430	-104.609266	NC	0.0
BKG05@8-9'	2/25/2025	8-9	40.225430	-104.609266	NC	0.0
BKG05@9-10'	2/25/2025	9-10	40.225430	-104.609266	NC	0.0
BKG01@4' ⁽³⁾	8/10/2021	4 ft. bgs	40.252370	-104.591839	1.0	0.0

TABLE 1
FIELD DATA SUMMARY TABLE
NOBLE - 100322
DILLER 42-13 TANK BATTERY, WELD COUNTY, COLORADO
REM # 27091

Sample ID	Sample Date	Depth (ft. bgs)	GPS Data Latitude/Longitude		PDOP Value	VOC Concentration (ppm)
BKG01@6 ⁽³⁾	8/10/2021	6 ft. bgs	40.252370	-104.591839	1.0	0.2

1. Global Positioning System (GPS) data is provided in decimal degrees using North American Datum (NAD) 83 UTMZone 13 North.

2. Volatile organic compound (VOC) concentrations are measured in the field using a photoionization detector (PID).

3. Background samples collected from nearby McKenney 6-42 Wellhead project (REM# 18662).

PDOP = Position Dilution of Precision

ppm = Parts per million

ft. = Feet

bgs = Below ground surface

TABLE 2
SUMMARY OF VOLATILE ORGANIC SOIL CHEMISTRY DATA
NOBLE - 100322
DILLER 42-13 TANK BATTERY, WELD COUNTY, COLORADO
REM # 27091

Sample ID	Sample Date	Depth (ft. bgs)	Benzene (mg/kg)	Toluene (mg/kg)	Ethyl-Benzene (mg/kg)	Xylenes (mg/kg)	1,2,4-Trimethyl-Benzene (mg/kg)	1,3,5-Trimethyl-Benzene (mg/kg)	Naphthalene (mg/kg)	TPH (mg/kg)	TPH GRO (mg/kg)	TPH DRO (mg/kg)	TPH ORO (mg/kg)
ECMC Table 915-1 Limits (Residential SSL)			1.2	490	5.8	58	30	27	2	500	500**		
ECMC Table 915-1 Limits (Protection of Groundwater SSL)			0.0026	0.69	0.78	9.9	0.0081	0.0087	0.0038	500	500**		
AST01@0-6"	5/28/2024	0.5	<0.0020	<0.0050	<0.0050	0.011	<0.0050	<0.0050	0.0040	<50	<0.50	<50	<50
PWV01-B@5'	5/28/2024	5	<0.0020	<0.0050	<0.0050	<0.010	<0.0050	<0.0050	<0.0038	850	<0.50	690	160
PWV01-S@2.5'	5/28/2024	2.5	<0.0020	<0.0050	<0.0050	<0.010	<0.0050	<0.0050	<0.0038	<50	<0.50	<50	<50
SEP01-DL@2.5'	5/28/2024	2.5	<0.0020	<0.0050	<0.0050	<0.010	<0.0050	<0.0050	<0.0038	<50	<0.50	<50	<50
SEP01-FL@2.5'	5/28/2024	2.5	<0.0020	<0.0050	<0.0050	<0.010	<0.0050	<0.0050	<0.0038	<50	<0.50	<50	<50
SB01@5-6'	2/25/2025	5-6	<0.0020	<0.0050	<0.0050	<0.010	<0.0050	<0.0050	<0.0038	<50	<0.50	<50	<50
SB01@10'	2/25/2025	10	<0.0020	<0.0050	<0.0050	<0.010	<0.0050	<0.0050	<0.0038	<50	<0.50	<50	<50
SB02@5-6'	2/25/2025	5-6	<0.0020	<0.0050	<0.0050	<0.010	<0.0050	<0.0050	<0.0038	<50	<0.50	<50	<50
SB03@5-6'	2/25/2025	5-6	<0.0020	<0.0050	<0.0050	<0.010	<0.0050	<0.0050	<0.0038	<50	<0.50	<50	<50
SB04@0.5-1'	2/25/2025	0.5-1	<0.0020	<0.0050	<0.0050	<0.010	<0.0050	<0.0050	<0.0038	<50	<0.50	<50	<50
SB04@5-6'	2/25/2025	5-6	<0.0020	<0.0050	<0.0050	<0.010	<0.0050	<0.0050	<0.0038	<50	<0.50	<50	<50
SB05@0.5-1'	2/25/2025	0.5-1	<0.0020	<0.0050	<0.0050	<0.010	<0.0050	<0.0050	<0.0038	<50	<0.50	<50	<50
SB05@5-6'	2/25/2025	5-6	<0.0020	<0.0050	<0.0050	<0.010	<0.0050	<0.0050	<0.0038	<50	<0.50	<50	<50
SB06@0.5-1'	2/25/2025	0.5-1	<0.0020	<0.0050	<0.0050	<0.010	<0.0050	<0.0050	<0.0038	<50	<0.50	<50	<50
SB07@0.5-1'	2/25/2025	0.5-1	<0.0020	<0.0050	<0.0050	<0.010	<0.0050	<0.0050	<0.0038	<50	<0.50	<50	<50
SB08@0.5-1'	2/25/2025	0.5-1	<0.0020	<0.0050	<0.0050	<0.010	<0.0050	<0.0050	<0.0038	<50	<0.50	<50	<50

- Bold values exceed the ECMC Table 915-1 limit(s)
 - Red & blue highlighted soil analytical values indicate an exceedance of the referenced soil screening level (SSL)
 - ** Summation of GRO+DRO+ORO must be less than 500 mg/kg
- (<) = Analytical result is less than the indicated laboratory reporting limit.
TPH-GRO = Total petroleum hydrocarbons - gasoline range organics
TPH-DRO = Total petroleum hydrocarbons - diesel range organics
TPH-ORO = Total petroleum hydrocarbons - oil range organics
mg/kg = Milligrams per kilogram
ft. = Feet
bgs = Below ground surface

TABLE 3
SUMMARY OF POLYCYCLIC AROMATIC HYDROCARBON SOIL CHEMISTRY DATA
NOBLE - 100322
DILLER 42-13 TANK BATTERY, WELD COUNTY, COLORADO
REM # 27091

Sample ID	Sample Date	Depth (ft. bgs)	Acenaphthene (mg/kg)	Anthracene (mg/kg)	Benzo (a) Anthracene (mg/kg)	Benzo (a) Pyrene (mg/kg)	Benzo (b) Fluoranthene (mg/kg)	Benzo (k) Fluoranthene (mg/kg)	Chrysene (mg/kg)	Dibenzo (a,h) Anthracene (mg/kg)	Fluoranthene (mg/kg)	Fluorene (mg/kg)	Indeno (1,2,3- cd) Pyrene (mg/kg)	Pyrene (mg/kg)	1-Methyl - Naphthalene (mg/kg)	2-Methyl- Naphthalene (mg/kg)
ECMC Table 915-1 Limits (Residential SSL)			360	1800	1.1	0.11	1.1	11	110	0.11	240	240	1.1	180	18	24
ECMC Table 915-1 Limits (Protection of Groundwater SSL)			0.55	5.8	0.011	0.24	0.3	2.9	9	0.096	8.9	0.54	0.98	1.3	0.006	0.019
AST01@0-6"	5/28/2024	0.5	<0.00500	<0.00500	<0.00500	<0.00500	<0.00500	<0.00500	<0.00500	<0.00500	<0.00500	<0.00500	<0.00500	<0.00500	<0.00500	<0.00500
PWV01-B@5'	5/28/2024	5	<0.00500	<0.00500	<0.00500	<0.00500	<0.00500	<0.00500	<0.00500	<0.00500	0.00546	0.0103	<0.00500	<0.00500	<0.00500	<0.00500
PWV01-S@2.5'	5/28/2024	2.5	<0.00500	<0.00500	<0.00500	<0.00500	<0.00500	<0.00500	<0.00500	<0.00500	<0.00500	<0.00500	<0.00500	<0.00500	<0.00500	0.00557
SEP01-DL@2.5'	5/28/2024	2.5	<0.00500	<0.00500	<0.00500	<0.00500	<0.00500	<0.00500	<0.00500	<0.00500	<0.00500	<0.00500	<0.00500	<0.00500	<0.00500	<0.00500
SEP01-FL@2.5'	5/28/2024	2.5	<0.00500	<0.00500	<0.00500	<0.00500	<0.00500	<0.00500	<0.00500	<0.00500	<0.00500	<0.00500	<0.00500	<0.00500	<0.00500	<0.00500
SB01@5-6'	2/25/2025	5-6	<0.00500	<0.00500	<0.00500	<0.00500	<0.00500	<0.00500	<0.00500	<0.00500	<0.00500	<0.00500	<0.00500	<0.00500	<0.00500	<0.00500
SB01@10'	2/25/2025	10	<0.00500	<0.00500	<0.00500	<0.00500	<0.00500	<0.00500	<0.00500	<0.00500	<0.00500	<0.00500	<0.00500	<0.00500	<0.00500	<0.00500
SB02@5-6'	2/25/2025	5-6	<0.00500	<0.00500	<0.00500	<0.00500	<0.00500	<0.00500	<0.00500	<0.00500	<0.00500	<0.00500	<0.00500	<0.00500	<0.00500	<0.00500
SB03@5-6'	2/25/2025	5-6	<0.00500	<0.00500	<0.00500	<0.00500	<0.00500	<0.00500	<0.00500	<0.00500	<0.00500	<0.00500	<0.00500	<0.00500	<0.00500	<0.00500
SB04@0.5-1'	2/25/2025	0.5-1	<0.00500	<0.00500	<0.00500	<0.00500	<0.00500	<0.00500	<0.00500	<0.00500	<0.00500	<0.00500	<0.00500	<0.00500	<0.00500	<0.00500
SB04@5-6'	2/25/2025	5-6	<0.00500	<0.00500	<0.00500	<0.00500	<0.00500	<0.00500	<0.00500	<0.00500	<0.00500	<0.00500	<0.00500	<0.00500	<0.00500	<0.00500
SB05@0.5-1'	2/25/2025	0.5-1	<0.00500	<0.00500	<0.00500	<0.00500	<0.00500	<0.00500	<0.00500	<0.00500	<0.00500	<0.00500	<0.00500	<0.00500	<0.00500	<0.00500
SB05@5-6'	2/25/2025	5-6	<0.00500	<0.00500	<0.00500	<0.00500	<0.00500	<0.00500	<0.00500	<0.00500	<0.00500	<0.00500	<0.00500	<0.00500	<0.00500	<0.00500
SB06@0.5-1'	2/25/2025	0.5-1	<0.00500	<0.00500	<0.00500	<0.00500	<0.00500	<0.00500	<0.00500	<0.00500	<0.00500	<0.00500	<0.00500	<0.00500	<0.00500	<0.00500
SB07@0.5-1'	2/25/2025	0.5-1	<0.00500	<0.00500	<0.00500	<0.00500	<0.00500	<0.00500	<0.00500	<0.00500	<0.00500	<0.00500	<0.00500	<0.00500	<0.00500	<0.00500
SB08@0.5-1'	2/25/2025	0.5-1	<0.00500	<0.00500	<0.00500	<0.00500	<0.00500	<0.00500	<0.00500	<0.00500	<0.00500	<0.00500	<0.00500	<0.00500	<0.00500	<0.00500

1. Bold values exceed the ECMC Table 915-1 limit(s)

2. Red & blue highlighted soil analytical values indicate an exceedance of the referenced soil screening level (SSL)

(<) = Analytical result is less than the indicated laboratory reporting limit.

mg/kg = Milligrams per kilogram

ft. = Feet

bgs = Below ground surface

TABLE 4
SUMMARY OF SOIL SUITABILITY FOR RECLAMATION
NOBLE - 100322
DILLER 42-13 TANK BATTERY, WELD COUNTY, COLORADO
REM # 27091

Sample ID	Sample Date	Depth (ft. bgs)	pH (Standard Units)	EC (mmhos/cm)	SAR (Standard Units)	Boron (mg/L)
ECMC Table 915-1 Soil Suitability Limits			6 - 8.3	<4	<6	2
AST01@0-6"	5/28/2024	0.5	7.50	0.426	0.404	<2.00
PWV01-B@5'	5/28/2024	5	7.21	0.0343	0.0227	<2.00
PWV01-S@2.5'	5/28/2024	2.5	6.82	0.0350	0.0406	<2.00
SEP01-DL@2.5'	5/28/2024	2.5	6.18	0.0413	0.00629	<2.00
SEP01-FL@2.5'	5/28/2024	2.5	8.93	0.0790	0.0389	<2.00
SB01@5-6'	2/25/2025	5-6	7.48	0.0986	0.0586	<2.00
SB01@10'	2/25/2025	10	8.56	0.153	0.0399	<2.00
SB02@5-6'	2/25/2025	5-6	7.61	0.0285	0.0194	<2.00
SB03@5-6'	2/25/2025	5-6	7.01	0.0337	0.0197	<2.00
SB04@0.5-1'	2/25/2025	0.5-1	5.27	0.0518	0.0572	<2.00
SB04@5-6'	2/25/2025	5-6	6.26	0.0508	0.0334	<2.00
SB05@0.5-1'	2/25/2025	0.5-1	4.60	0.0589	0.0895	<2.00
SB05@5-6'	2/25/2025	5-6	6.54	0.0445	0.0300	<2.00
SB06@0.5-1'	2/25/2025	0.5-1	5.65	0.0278	0.0313	<2.00
SB07@0.5-1'	2/25/2025	0.5-1	4.66	0.0627	0.0391	<2.00
SB08@0.5-1'	2/25/2025	0.5-1	5.01	0.0291	0.0233	<2.00
BKG01@0-6"	5/28/2024	0.5	6.27	0.193	0.0236	NA
BKG01@2.5'	5/28/2024	2.5	6.94	0.0390	0.0233	NA
BKG01@5'	5/28/2024	5	7.10	0.0275	0.00933	NA
BKG02@2-3'	2/25/2025	2-3	6.58	0.0482	0.0262	<2.00
BKG02@5-6'	2/25/2025	5-6	7.15	0.0621	0.0848	<2.00
BKG02@6-7'	2/25/2025	6-7	8.05	0.105	0.100	<2.00
BKG02@8-9'	2/25/2025	8-9	8.12	0.261	0.893	<2.00
BKG02@9-10'	2/25/2025	9-10	7.32	0.781	5.03	<2.00
BKG03@2-3'	2/25/2025	2-3	6.74	0.0451	0.0291	<2.00
BKG03@5-6'	2/25/2025	5-6	8.36	0.379	0.294	<2.00
BKG03@6-7'	2/25/2025	6-7	8.43	0.392	0.164	<2.00
BKG03@8-9'	2/25/2025	8-9	8.42	0.463	0.247	<2.00
BKG03@9-10'	2/25/2025	9-10	8.54	0.411	0.198	<2.00
BKG04@2-3'	2/25/2025	2-3	7.88	0.107	0.149	<2.00
BKG04@5-6'	2/25/2025	5-6	6.94	0.227	0.513	<2.00
BKG04@6-7'	2/25/2025	6-7	6.74	0.780	0.645	<2.00
BKG04@8-9'	2/25/2025	8-9	7.94	0.669	0.626	<2.00
BKG04@9-10'	2/25/2025	9-10	8.22	0.667	2.56	<2.00

TABLE 4
SUMMARY OF SOIL SUITABILITY FOR RECLAMATION
NOBLE - 100322
DILLER 42-13 TANK BATTERY, WELD COUNTY, COLORADO
REM # 27091

Sample ID	Sample Date	Depth (ft. bgs)	pH (Standard Units)	EC (mmhos/cm)	SAR (Standard Units)	Boron (mg/L)
ECMC Table 915-1 Soil Suitability Limits			6 - 8.3	<4	<6	2
BKG05@2-3'	2/25/2025	2-3	6.92	0.0554	0.0364	<2.00
BKG05@5-6'	2/25/2025	5-6	8.31	0.966	5.37	<2.00
BKG05@6-7'	2/25/2025	6-7	6.88	0.0596	0.0660	<2.00
BKG05@8-9'	2/25/2025	8-9	7.89	1.52	1.88	<2.00
BKG05@9-10'	2/25/2025	9-10	8.55	1.62	1.38	<2.00
BKG01@4' ⁽⁴⁾	8/10/2021	4 ft. bgs	8.94	NA	NA	NA
BKG01@6' ⁽⁴⁾	8/10/2021	6 ft. bgs	8.67	NA	NA	NA
Maximum Background Concentration			8.94	-	-	-

1. **Bold** faced values exceed the ECMC Table 915-1 limit(s), but are within background concentrations.

2. **Bold** faced values exceed the ECMC Table 915-1 limit(s) and native background concentrations.

3. Brown highlighted soil analytical values indicate a regulatory exceedance.

4. Background samples collected from nearby McKenney 6-42 Wellhead project (REM# 18662).

mg/L = Milligrams per liter

ft. = Feet

bgs = Below ground surface

mmhos/cm = Millimohs per centimeter

NA - Not analyzed

TABLE 5
SUMMARY OF METALS IN SOIL CHEMISTRY DATA
NOBLE - 100322
DILLER 42-13 TANK BATTERY, WELD COUNTY, COLORADO
REM # 27091

Sample ID	Sample Date	Depth (ft. bgs)	Arsenic (mg/kg)	Barium (mg/kg)	Cadmium (mg/kg)	Chromium (VI) (mg/kg)	Copper (mg/kg)	Lead (mg/kg)	Nickel (mg/kg)	Selenium (mg/kg)	Silver (mg/kg)	Zinc (mg/kg)
ECMC Table 915-1 Limits (Residential SSL)			0.68	15000	71	0.3	3100	400	1500	390	390	23000
ECMC Table 915-1 Limits (Protection of Groundwater SSL)			0.29	82	0.38	0.00067	46	14	26	0.26	0.8	370
AST01@0-6"	5/28/2024	0.5	2.26	55.1	<0.200	<0.30	5.46	5.56	4.75	<0.260	0.0356	15.6
PWV01-B@5'	5/28/2024	5	1.30	45.6	<0.200	<0.30	2.01	3.33	2.52	<0.260	<0.0200	9.82
PWV01-S@2.5'	5/28/2024	2.5	1.48	38.7	<0.200	<0.30	3.45	4.16	3.07	<0.260	0.0209	12.4
SEP01-DL@2.5'	5/28/2024	2.5	1.21	33.2	<0.200	<0.30	2.28	3.78	2.24	<0.260	<0.0200	11.4
SEP01-FL@2.5'	5/28/2024	2.5	1.62	52.5	<0.200	<0.30	2.58	2.39	2.24	<0.260	<0.0200	8.52
SB01@5-6'	2/25/2025	5-6	0.468	43.5	<0.200	<0.30	0.922	2.73	1.21	<0.260	<0.0200	4.06
SB01@10'	2/25/2025	10	0.426	54.4	<0.200	<0.30	0.951	3.40	1.24	<0.260	<0.0200	4.50
SB02@5-6'	2/25/2025	5-6	0.461	36.6	<0.200	<0.30	0.787	2.65	1.19	<0.260	<0.0200	3.75
SB03@5-6'	2/25/2025	5-6	0.448	39.6	<0.200	<0.30	0.834	2.66	1.18	<0.260	<0.0200	3.85
SB04@0.5-1'	2/25/2025	0.5-1	0.440	26.4	<0.200	<0.30	0.982	4.73	0.779	<0.260	<0.0200	3.81
SB04@5-6'	2/25/2025	5-6	0.495	38.7	<0.200	<0.30	0.885	2.49	1.03	<0.260	<0.0200	3.56
SB05@0.5-1'	2/25/2025	0.5-1	0.444	25.2	<0.200	<0.30	0.962	4.21	0.809	<0.260	<0.0200	3.81
SB05@5-6'	2/25/2025	5-6	0.525	45.1	<0.200	<0.30	0.936	2.72	1.09	<0.260	<0.0200	3.95
SB06@0.5-1'	2/25/2025	0.5-1	0.477	26.6	<0.200	<0.30	0.964	2.84	0.848	<0.260	<0.0200	3.93
SB07@0.5-1'	2/25/2025	0.5-1	0.465	28.2	<0.200	<0.30	1.00	4.43	0.864	<0.260	<0.0200	4.07
SB08@0.5-1'	2/25/2025	0.5-1	0.420	24.1	<0.200	<0.30	1.07	3.40	0.783	<0.260	<0.0200	3.98
BKG01@0-6"	5/28/2024	0.5	1.19	30.4	<0.200	<0.30	2.49	5.15	1.96	<0.260	<0.0200	11.2
BKG01@2.5'	5/28/2024	2.5	1.01	29.7	<0.200	<0.30	2.14	2.85	2.04	<0.260	<0.0200	8.69
BKG01@5'	5/28/2024	5	1.44	40.8	<0.200	<0.30	2.24	3.72	2.78	<0.260	0.0215	11.8
BKG02@2-3'	2/25/2025	2-3	0.398	29.5	<0.200	<0.30	0.845	2.52	1.09	<0.260	<0.0200	3.86
BKG02@5-6'	2/25/2025	5-6	0.672	83.6	<0.200	<0.30	1.30	4.86	1.80	<0.260	0.0208	5.90
BKG02@6-7'	2/25/2025	6-7	0.315	17.1	<0.200	<0.30	0.686	1.64	0.787	<0.260	<0.0200	3.22
BKG02@8-9'	2/25/2025	8-9	0.354	21.3	<0.200	<0.30	0.807	2.02	0.801	<0.260	<0.0200	3.55
BKG02@9-10'	2/25/2025	9-10	0.561	55.1	<0.200	<0.30	1.18	3.58	1.15	<0.260	<0.0200	4.28
BKG03@2-3'	2/25/2025	2-3	0.499	48.1	<0.200	<0.30	0.889	3.29	1.23	<0.260	0.0220	4.49
BKG03@5-6'	2/25/2025	5-6	0.749	143	<0.200	<0.30	1.89	7.08	2.27	<0.260	0.0331	6.43
BKG03@6-7'	2/25/2025	6-7	0.789	153	<0.200	<0.30	1.84	7.95	2.35	<0.260	0.0348	6.30
BKG03@8-9'	2/25/2025	8-9	0.865	165	0.211	<0.30	2.06	8.97	2.61	<0.260	0.0417	7.54
BKG03@9-10'	2/25/2025	9-10	0.826	135	0.237	<0.30	1.92	8.86	2.26	<0.260	0.0404	7.71

TABLE 5
SUMMARY OF METALS IN SOIL CHEMISTRY DATA
NOBLE - 100322
DILLER 42-13 TANK BATTERY, WELD COUNTY, COLORADO
REM # 27091

Sample ID	Sample Date	Depth (ft. bgs)	Arsenic (mg/kg)	Barium (mg/kg)	Cadmium (mg/kg)	Chromium (VI) (mg/kg)	Copper (mg/kg)	Lead (mg/kg)	Nickel (mg/kg)	Selenium (mg/kg)	Silver (mg/kg)	Zinc (mg/kg)
ECMC Table 915-1 Limits (Residential SSL)			0.68	15000	71	0.3	3100	400	1500	390	390	23000
ECMC Table 915-1 Limits (Protection of Groundwater SSL)			0.29	82	0.38	0.00067	46	14	26	0.26	0.8	370
BKG04@2-3'	2/25/2025	2-3	0.367	36.4	<0.200	<0.30	0.857	2.84	0.992	<0.260	<0.0200	3.63
BKG04@5-6'	2/25/2025	5-6	0.418	52.1	<0.200	<0.30	1.22	3.35	1.26	<0.260	<0.0200	4.81
BKG04@6-7'	2/25/2025	6-7	0.480	56.5	<0.200	<0.30	1.10	4.59	1.39	<0.260	<0.0200	5.30
BKG04@8-9'	2/25/2025	8-9	0.471	44.1	<0.200	<0.30	1.16	3.40	1.52	<0.260	<0.0200	4.95
BKG04@9-10'	2/25/2025	9-10	0.512	55.2	<0.200	<0.30	1.02	3.58	1.37	<0.260	<0.0200	4.62
BKG05@2-3'	2/25/2025	2-3	0.720	49.9	<0.200	<0.30	1.24	3.86	1.59	<0.260	0.0343	5.75
BKG05@5-6'	2/25/2025	5-6	0.578	76.2	<0.200	<0.30	1.33	4.65	1.70	<0.260	<0.0200	6.31
BKG05@6-7'	2/25/2025	6-7	0.526	59.6	<0.200	<0.30	0.913	3.78	1.46	<0.260	<0.0200	4.19
BKG05@8-9'	2/25/2025	8-9	0.752	79.4	<0.200	<0.30	1.40	3.92	1.63	<0.260	0.0242	5.71
BKG05@9-10'	2/25/2025	9-10	0.471	79.1	<0.200	<0.30	1.29	4.90	1.92	<0.260	0.0214	5.91
1.25x Maximum Background Concentration			1.80	-	-	-	-	-	-	-	-	-

1. **Bold** faced values exceed the ECMC Table 915-1 limit(s), but are within 1.25x background concentrations.
2. **Red** faced values exceed the ECMC Table 915-1 limit(s) and native background concentrations.
3. Red & blue highlighted soil analytical values indicate an exceedance of the referenced soil screening level (SSL).
4. Non-detect background results accounted for in the highest background concentration by using the reporting limit.
5. * Indicates laboratory minimum detection limit in excess of SSL

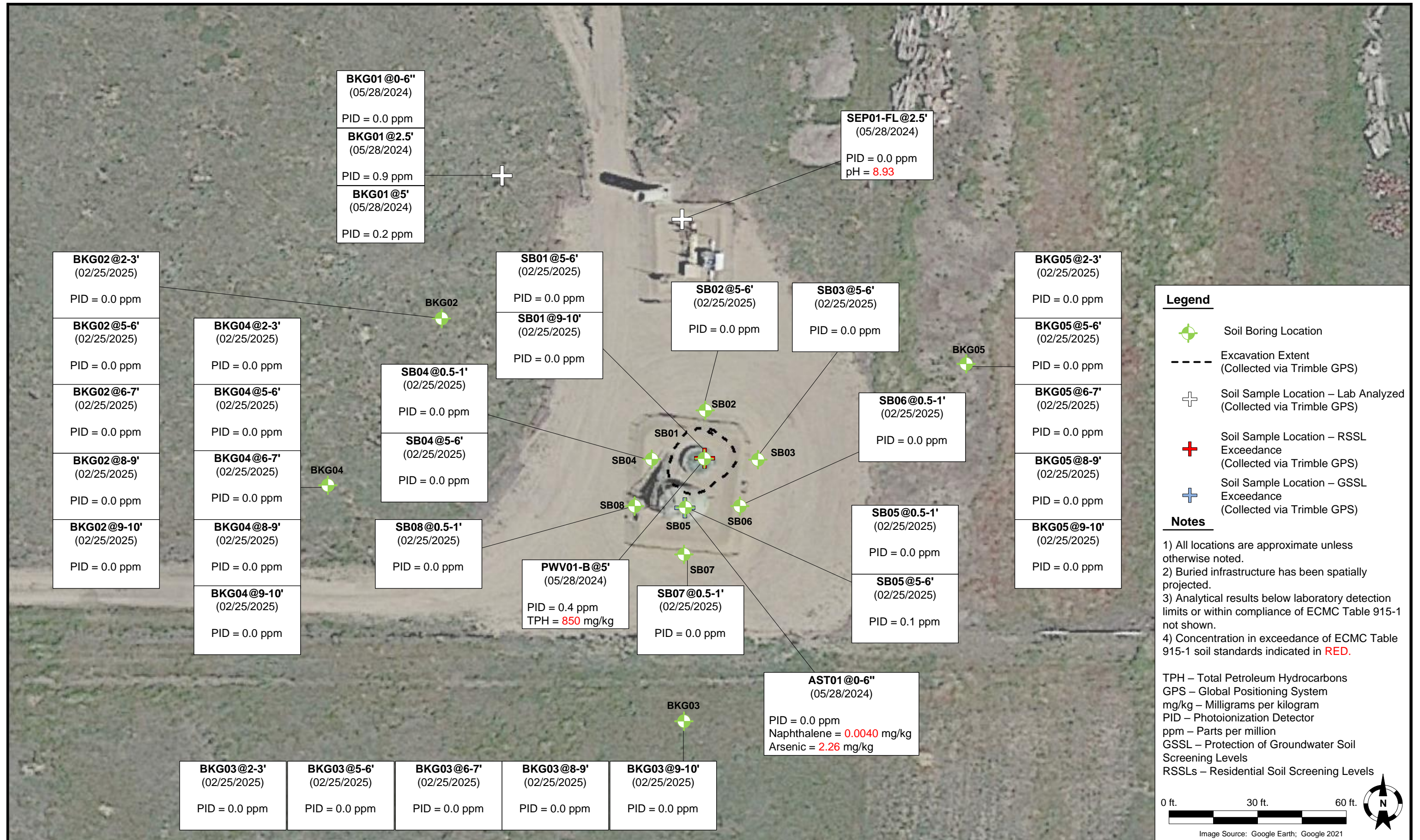
ECMC = Energy & Carbon Management Commission

(<) = Analytical result is less than the indicated laboratory reporting limit.

mg/kg = Milligrams per kilogram

ft. = Feet


bgs = Below ground surface



DATE: February 3, 2025

DESIGNED BY: JW

DRAWN BY: J. Meier

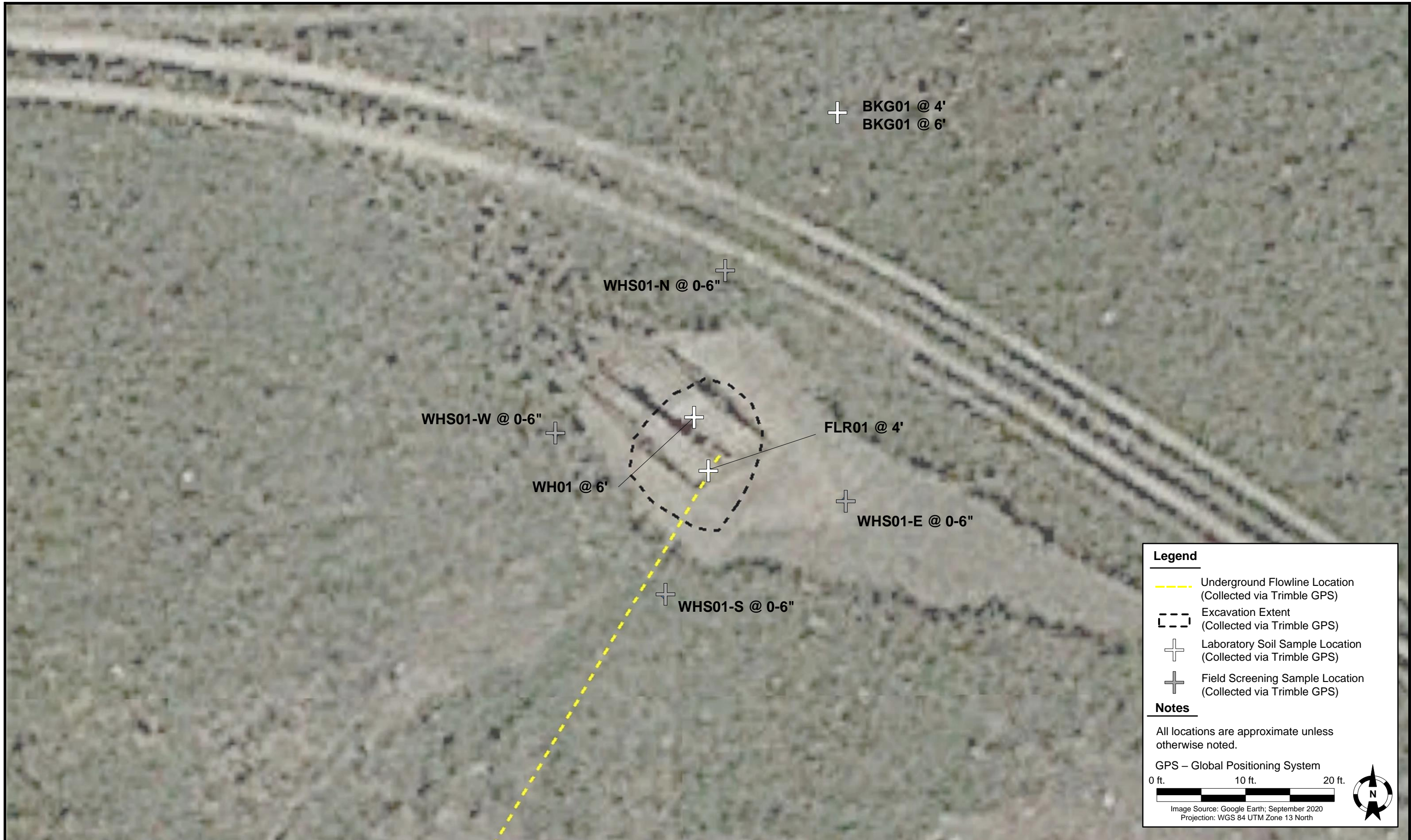


Tasman, Inc.
 4725 Independence St.
 Wheat Ridge, CO 80033

Noble Energy, Inc. – DJ Basin
Diller 42-13 Tank Battery
 SWNE, Section 13, Township 3 North, Range 65 West
 Weld County, Colorado

SOIL BORING LOCATION MAP

FIGURE 1



Legend

- Underground Flowline Location (Collected via Trimble GPS)
- Excavation Extent (Collected via Trimble GPS)
- Laboratory Soil Sample Location (Collected via Trimble GPS)
- Field Screening Sample Location (Collected via Trimble GPS)

Notes


All locations are approximate unless otherwise noted.

GPS – Global Positioning System

0 ft. 10 ft. 20 ft.

Image Source: Google Earth; September 2020
Projection: WGS 84 UTM Zone 13 North

DATE:	September 29, 2021
DESIGNED BY:	C. Hamlin
DRAWN BY:	D. Brightwell

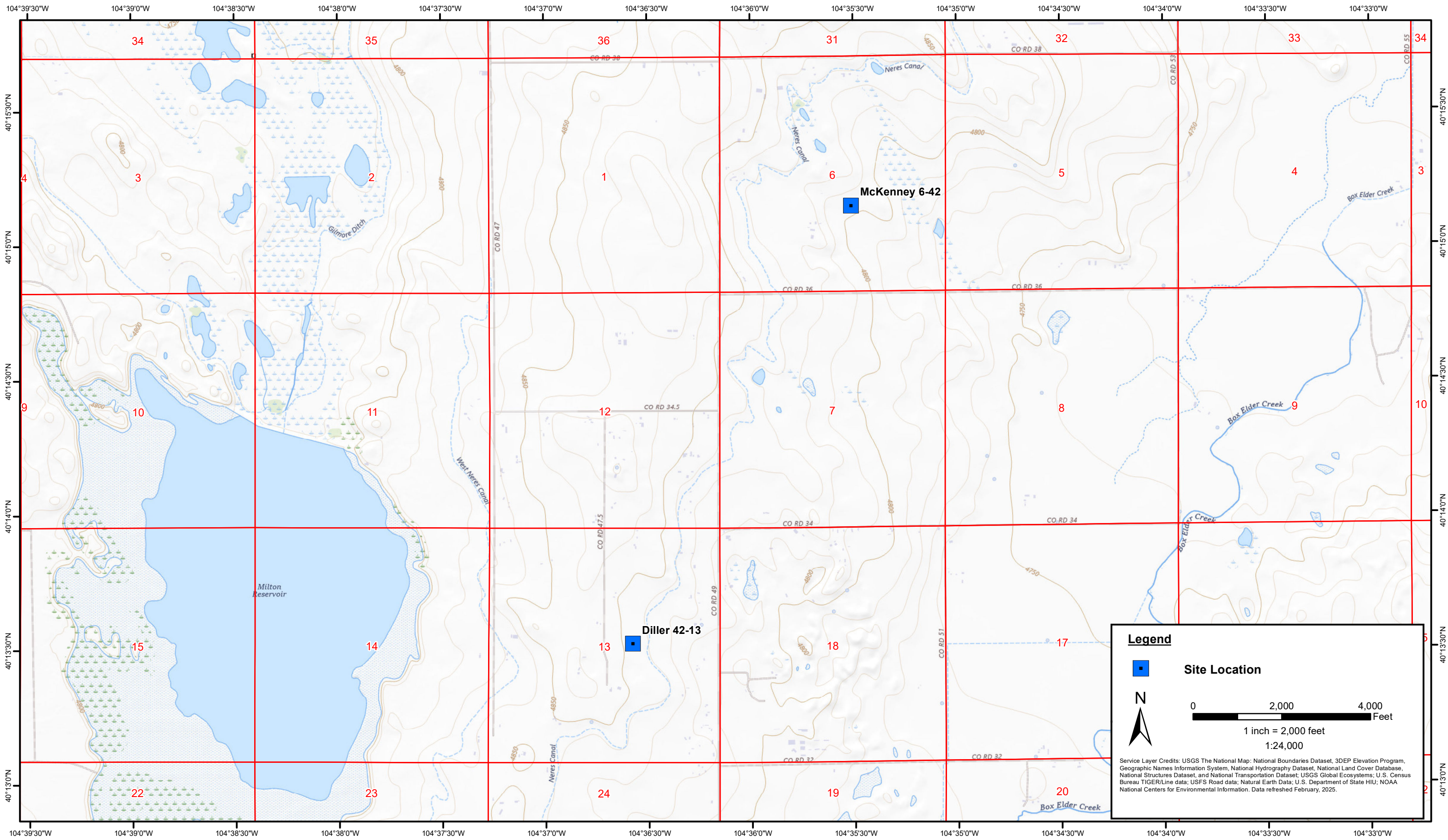


Tasman, Inc.
4725 Independence St.
Wheat Ridge, CO 80033

PDC Energy, Inc. – DJ Basin
Former McKenney 6-42 Wellhead
NWSE, Section 6, Township 3 North, Range 64 West
Weld County, Colorado

**SOIL SAMPLE
LOCATION MAP
(WELLHEAD)**

**FIGURE
2**



DATE:	May 2025
DESIGNED BY:	J. Whritenour
DRAWN BY:	J. Woffinden









Noble Energy Inc. - 100322 - DJ Basin
Diller 42-13 & McKenney 6-42
 NWNE, Section 30, Township 6 North, Range 64 West
 Weld County, Colorado

Site Location Map

Figure
3



Legend

-  Proposed Soil Boring Location
-  Soil Boring Location
-  Excavation Extent (Collected via Trimble GPS)
-  Soil Sample Location – Lab Analyzed (Collected via Trimble GPS)
-  Soil Sample Location – RSSL Exceedance (Collected via Trimble GPS)
-  Soil Sample Location – GSSL Exceedance (Collected via Trimble GPS)

Notes

- 1) All locations are approximate unless otherwise noted.
- 2) Buried infrastructure has been spatially projected.
- 3) Color coded sample exceedances are in reference to ECOM Table 915-1 Organic Compounds in Soil and TPH.

GPS – Global Positioning System
 GSSL – Protection of Groundwater Soil Screening Levels
 RSSLs – Residential Soil Screening Levels

0 ft. 30 ft. 60 ft.






Image Source: Google Earth; Google 2021



DATE:	February 3, 2025
DESIGNED BY:	JW
DRAWN BY:	J. Meier



Tasman, Inc.
 4725 Independence St.
 Wheat Ridge, CO 80033

Noble Energy, Inc. – DJ Basin
Diller 42-13 Tank Battery
 SWNE, Section 13, Township 3 North, Range 65 West
 Weld County, Colorado

PROPOSED SOIL BORING LOCATION MAP

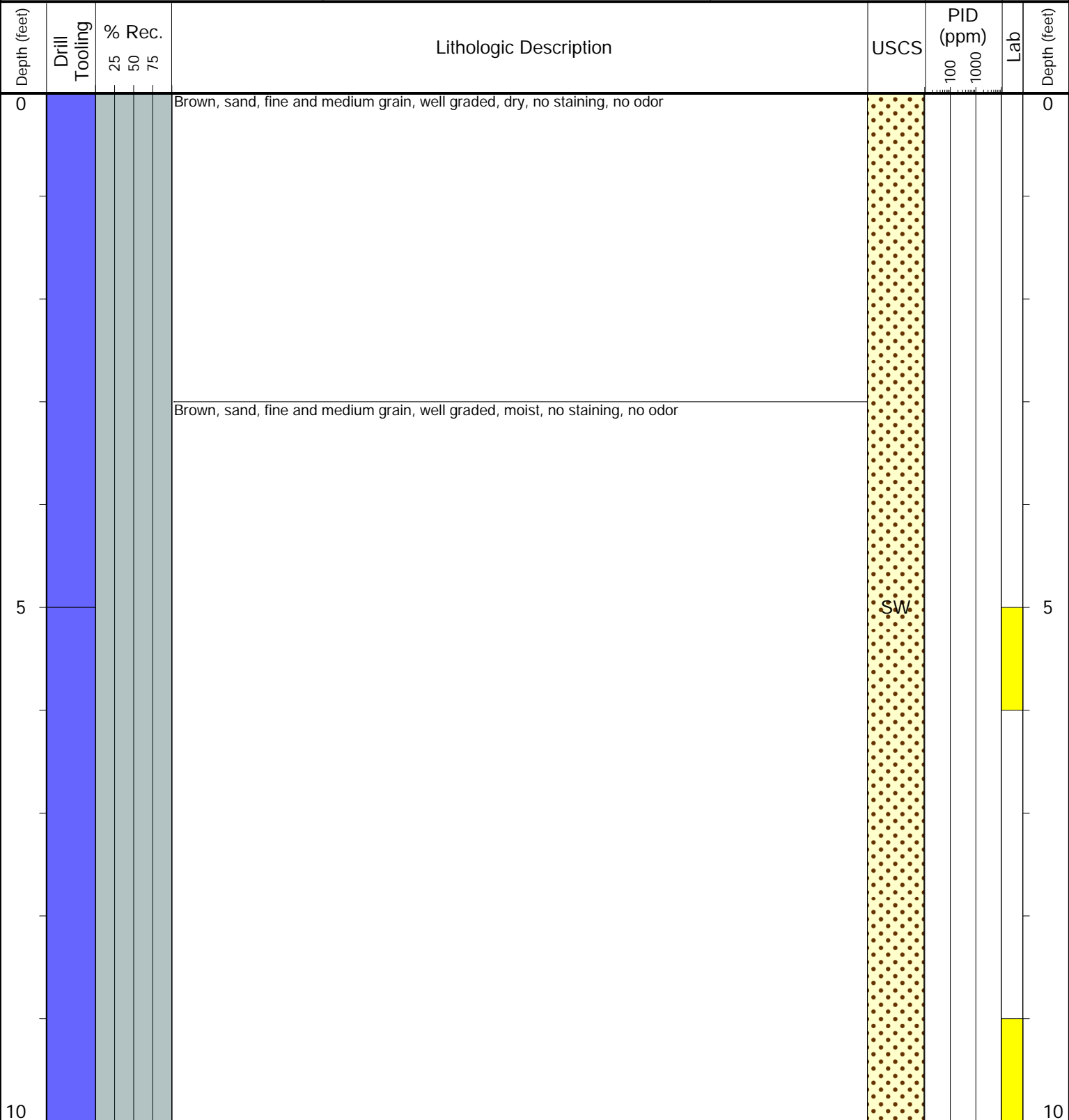
FIGURE 4



CLIENT: Noble
LOGGED BY: Ulisies Sandoval
PROJECT MANAGER: Mike Mendina
DRILLING CONTRACTOR: Tasman
DRILLING EQUIPMENT: Hand Auger
DRILL BIT SIZE (INCHES): 3.25
DATE STARTED - COMPLETED: 12/17/24 - 12/17/24
TOTAL WELL DEPTH (FT. BGS): 10
DEPTH TO WATER (FT. BGS): Not Encountered

Diller 42-13
BORING/WELL ID: SB01
LOCATION: NW of excavation
LATITUDE (NAD 83): 40.225344
LONGITUDE (NAD 83): -104.609584
GROUND ELEVATION (FT. AMSL): Not Measured
ABANDONMENT METHOD: Native Material

4725 Independence St.
Wheat Ridge, CO 80033



Drilling / Sample Method:

- Macro-Core
- Hand Auger
- Expendable Well Tip
- HydroPunch Groundwater Sampler

Laboratory Sample Types:

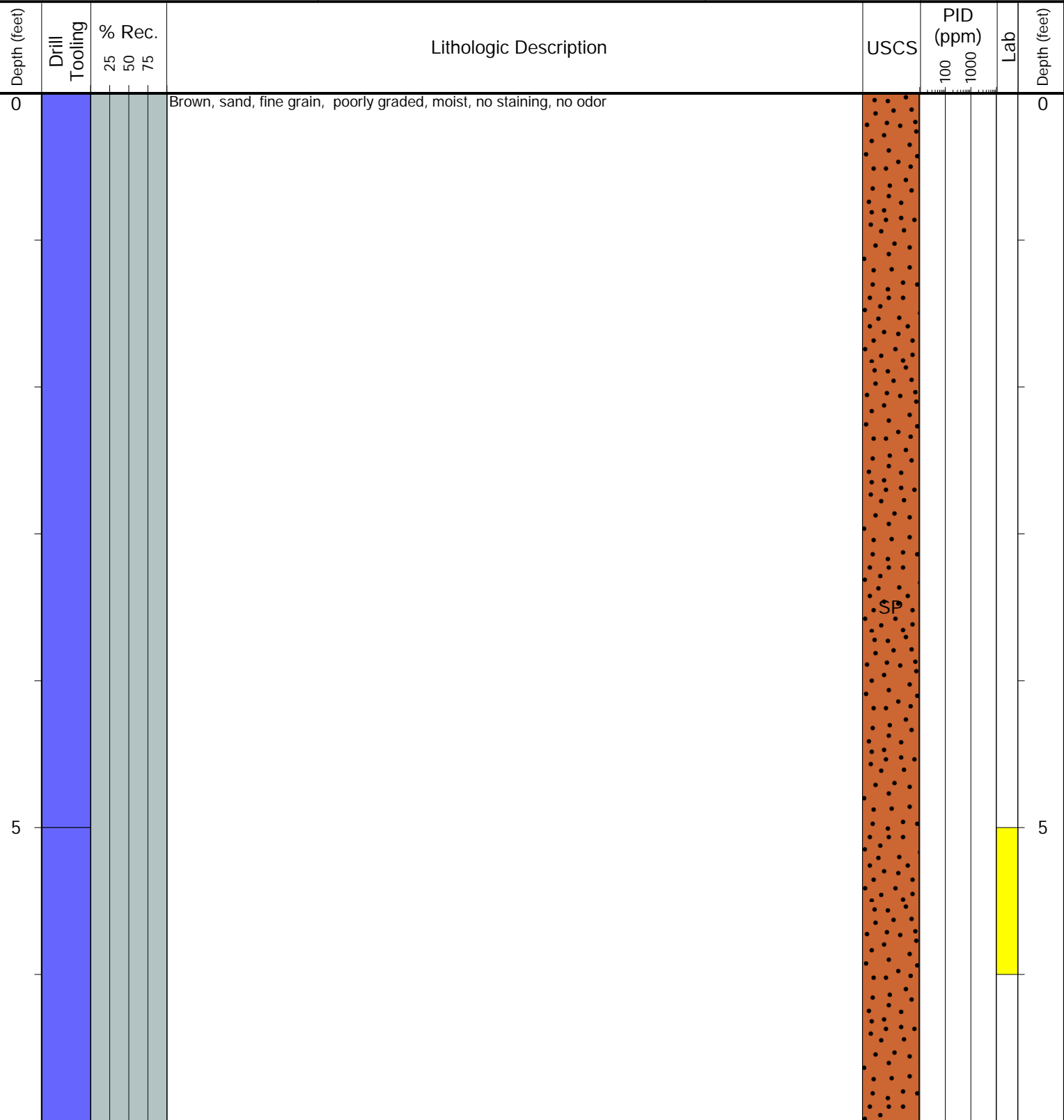
- Geotechnical Lab
- Analytical Chemistry Lab
- Geotechnical & Analytical Chemistry Lab



CLIENT: Noble
LOGGED BY: Ulisies Sandoval
PROJECT MANAGER: Mike Mendina
DRILLING CONTRACTOR: Tasman
DRILLING EQUIPMENT: Hand Auger
DRILL BIT SIZE (INCHES): 3.25
DATE STARTED - COMPLETED: 12/17/24 - 12/17/24
TOTAL WELL DEPTH (FT. BGS): 7
DEPTH TO WATER (FT. BGS): Not Encountered

Diller 42-13
BORING/WELL ID: SB02
LOCATION: N of excavation
LATITUDE (NAD 83): 40.225390
LONGITUDE (NAD 83): -104.609583
GROUND ELEVATION (FT. AMSL): Not Measured
ABANDONMENT METHOD: Native Material

4725 Independence St.
Wheat Ridge, CO 80033



Drilling / Sample Method:

- Macro-Core
- Hand Auger
- Expendable Well Tip
- HydroPunch Groundwater Sampler

Laboratory Sample Types:

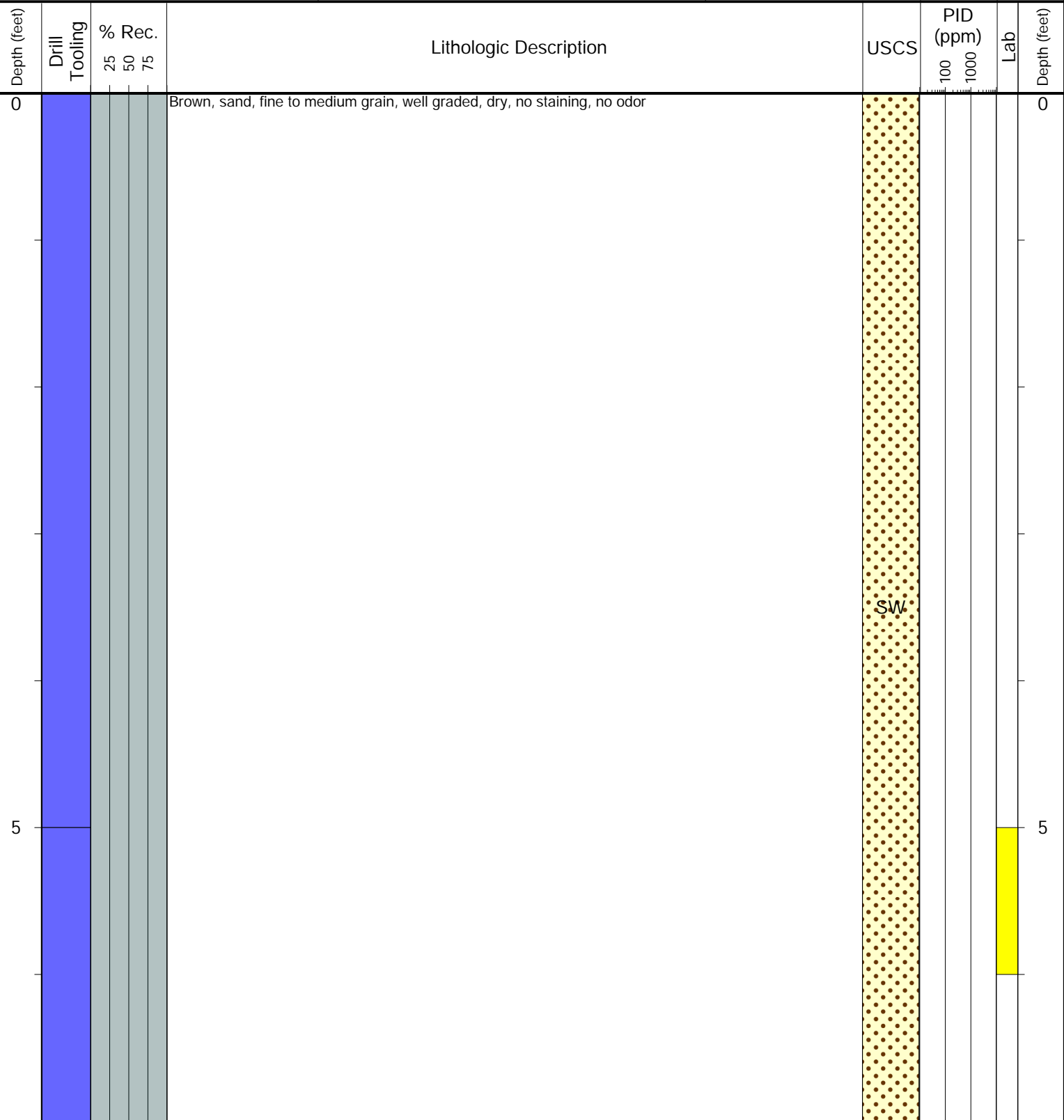
- Geotechnical Lab
- Analytical Chemistry Lab
- Geotechnical & Analytical Chemistry Lab



CLIENT: Noble
LOGGED BY: Ulisies Sandoval
PROJECT MANAGER: Mike Mendina
DRILLING CONTRACTOR: Tasman
DRILLING EQUIPMENT: Hand Auger
DRILL BIT SIZE (INCHES): 3.25
DATE STARTED - COMPLETED: 12/17/24 - 12/17/24
TOTAL WELL DEPTH (FT. BGS): 7
DEPTH TO WATER (FT. BGS): Not Encountered

Diller 42-13
BORING/WELL ID: SB03
LOCATION: E of excavation
LATITUDE (NAD 83): 40.225343
LONGITUDE (NAD 83): -104.609522
GROUND ELEVATION (FT. AMSL): Not Measured
ABANDONMENT METHOD: Native Material

4725 Independence St.
Wheat Ridge, CO 80033



Drilling / Sample Method:

- Macro-Core
- Hand Auger
- Expendable Well Tip
- HydroPunch Groundwater Sampler

Laboratory Sample Types:

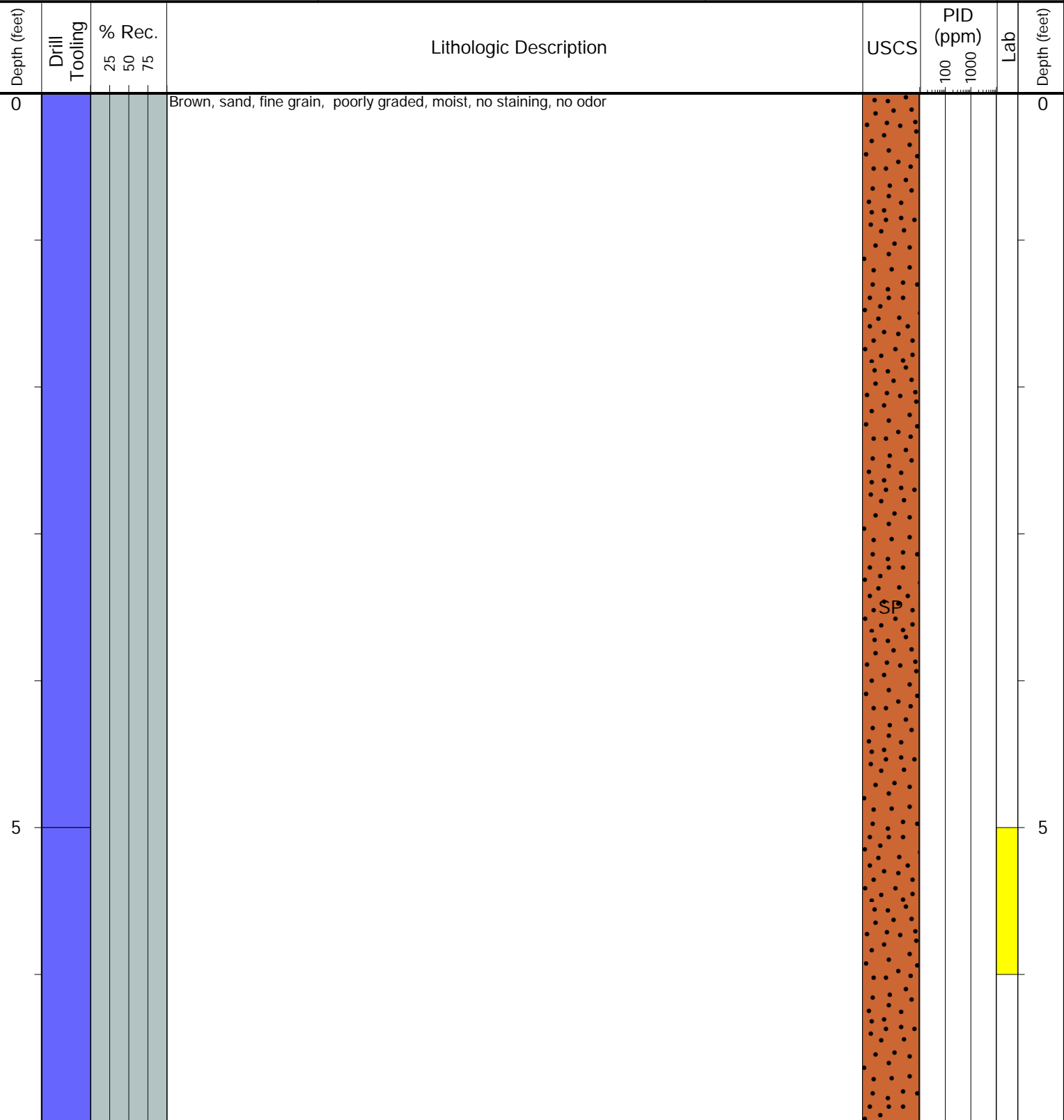
- Geotechnical Lab
- Analytical Chemistry Lab
- Geotechnical & Analytical Chemistry Lab



CLIENT: Noble
LOGGED BY: Ulisies Sandoval
PROJECT MANAGER: Mike Mendina
DRILLING CONTRACTOR: Tasman
DRILLING EQUIPMENT: Hand Auger
DRILL BIT SIZE (INCHES): 3.25
DATE STARTED - COMPLETED: 12/17/24 - 12/17/24
TOTAL WELL DEPTH (FT. BGS): 7
DEPTH TO WATER (FT. BGS): Not Encountered

Diller 42-13
BORING/WELL ID: SB04
LOCATION: W of excavation
LATITUDE (NAD 83): 40.225344
LONGITUDE (NAD 83): -104.609649
GROUND ELEVATION (FT. AMSL): Not Measured
ABANDONMENT METHOD: Native Material

4725 Independence St.
Wheat Ridge, CO 80033



Drilling / Sample Method:

- Macro-Core
- Hand Auger
- Expendable Well Tip
- HydroPunch Groundwater Sampler

Laboratory Sample Types:

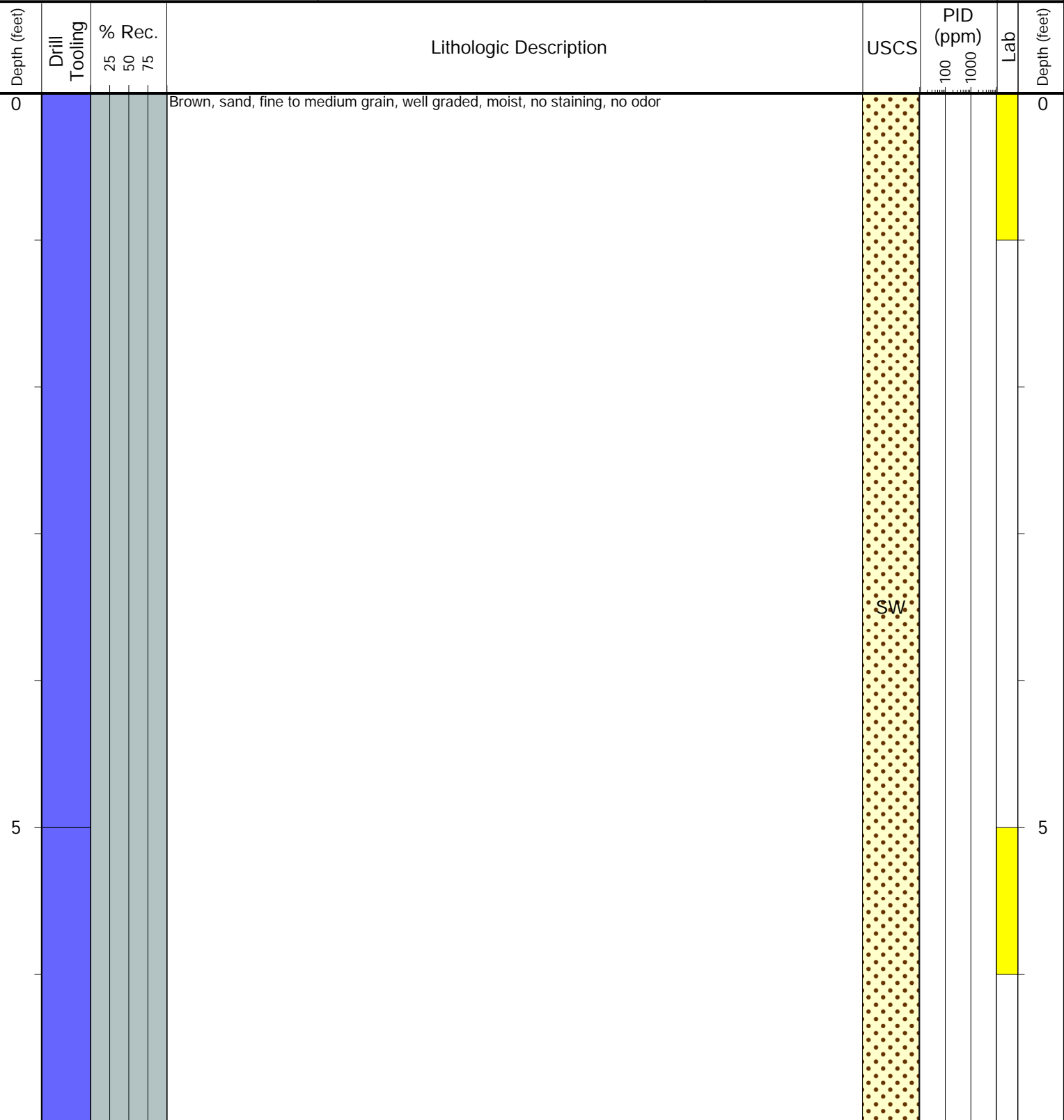
- Geotechnical Lab
- Analytical Chemistry Lab
- Geotechnical & Analytical Chemistry Lab



CLIENT: Noble
LOGGED BY: Ulisies Sandoval
PROJECT MANAGER: Mike Mendina
DRILLING CONTRACTOR: Tasman
DRILLING EQUIPMENT: Hand Auger
DRILL BIT SIZE (INCHES): 3.25
DATE STARTED - COMPLETED: 12/17/24 - 12/17/24
TOTAL WELL DEPTH (FT. BGS): 7
DEPTH TO WATER (FT. BGS): Not Encountered

Diller 42-13
BORING/WELL ID: SB05
LOCATION: S of excavation
LATITUDE (NAD 83): 40.225300
LONGITUDE (NAD 83): -104.609611
GROUND ELEVATION (FT. AMSL): Not Measured
ABANDONMENT METHOD: Native Material

4725 Independence St.
Wheat Ridge, CO 80033



Drilling / Sample Method:

- Macro-Core
- Hand Auger
- Expendable Well Tip
- HydroPunch Groundwater Sampler

Laboratory Sample Types:

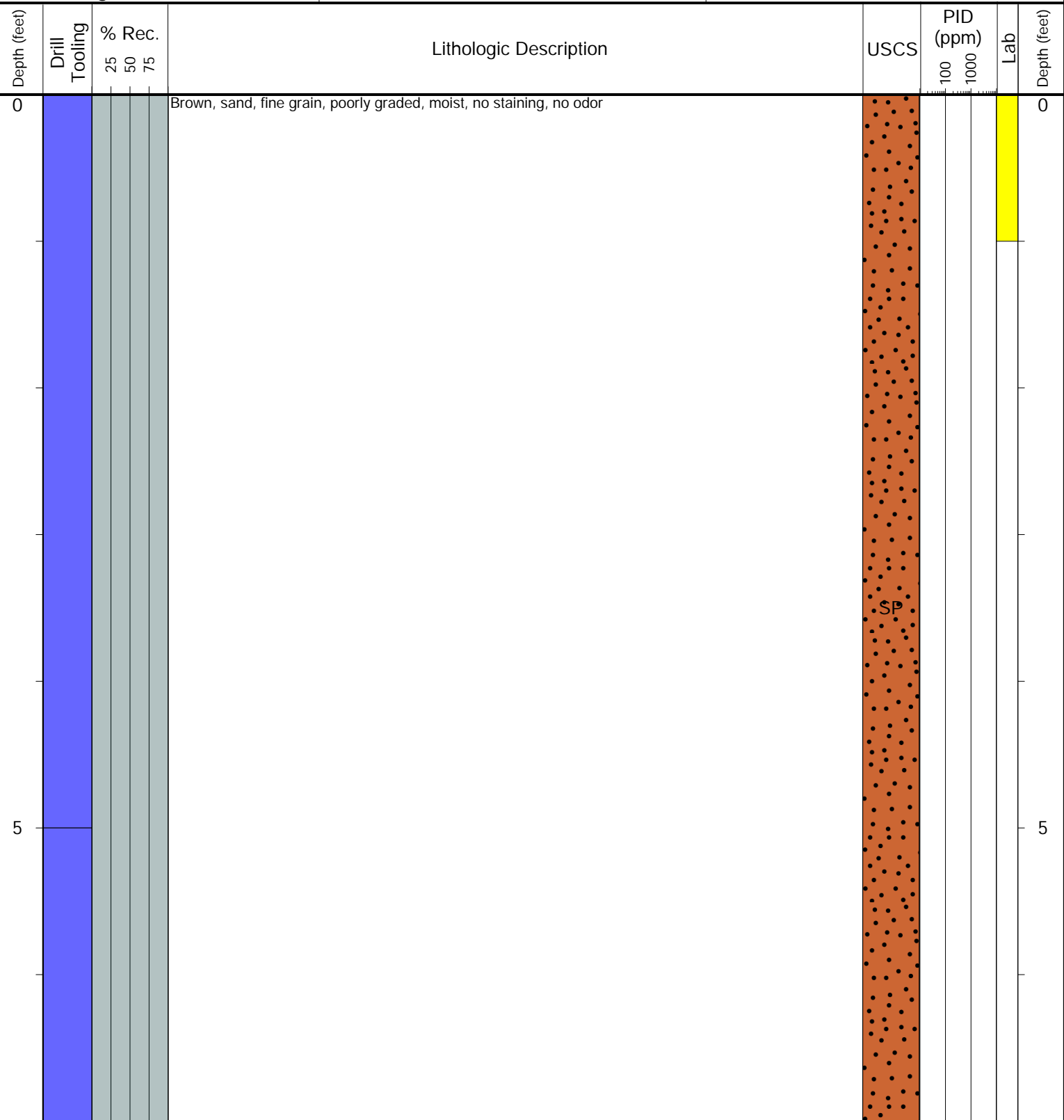
- Geotechnical Lab
- Analytical Chemistry Lab
- Geotechnical & Analytical Chemistry Lab



CLIENT: Noble
LOGGED BY: Ulisies Sandoval
PROJECT MANAGER: Mike Mendina
DRILLING CONTRACTOR: Tasman
DRILLING EQUIPMENT: Hand Auger
DRILL BIT SIZE (INCHES): 3.25
DATE STARTED - COMPLETED: 12/17/24 - 12/17/24
TOTAL WELL DEPTH (FT. BGS): 7
DEPTH TO WATER (FT. BGS): Not Encountered

Diller 42-13
BORING/WELL ID: SB06
LOCATION: SE of excavation
LATITUDE (NAD 83): 40.225299
LONGITUDE (NAD 83): -104.609542
GROUND ELEVATION (FT. AMSL): Not Measured
ABANDONMENT METHOD: Native Material

4725 Independence St.
Wheat Ridge, CO 80033



Drilling / Sample Method:

- Macro-Core
- Hand Auger
- Expendable Well Tip
- HydroPunch Groundwater Sampler

Laboratory Sample Types:

- Geotechnical Lab
- Analytical Chemistry Lab
- Geotechnical & Analytical Chemistry Lab



CLIENT: Noble
LOGGED BY: Ulisies Sandoval
PROJECT MANAGER: Mike Mendina
DRILLING CONTRACTOR: Tasman
DRILLING EQUIPMENT: Hand Auger
DRILL BIT SIZE (INCHES): 3.25
DATE STARTED - COMPLETED: 12/17/24 - 12/17/24
TOTAL WELL DEPTH (FT. BGS): 7
DEPTH TO WATER (FT. BGS): Not Encountered

Diller 42-13
BORING/WELL ID: SB07
LOCATION: S of SB05
LATITUDE (NAD 83): 40.225255
LONGITUDE (NAD 83): -104.609610
GROUND ELEVATION (FT. AMSL): Not Measured
ABANDONMENT METHOD: Native Material

4725 Independence St.
Wheat Ridge, CO 80033

Depth (feet)	Drill Tooling	% Rec. 25 50 75	Lithologic Description	USCS	PID (ppm)		Lab	Depth (feet)
					100	1000		
0			Brown, sand, fine grain, poorly graded, moist, no staining, no odor	SP				0
5								5

Drilling / Sample Method:

- Macro-Core
- Hand Auger
- HydroPunch Groundwater Sampler
- Expendable Well Tip

Laboratory Sample Types:

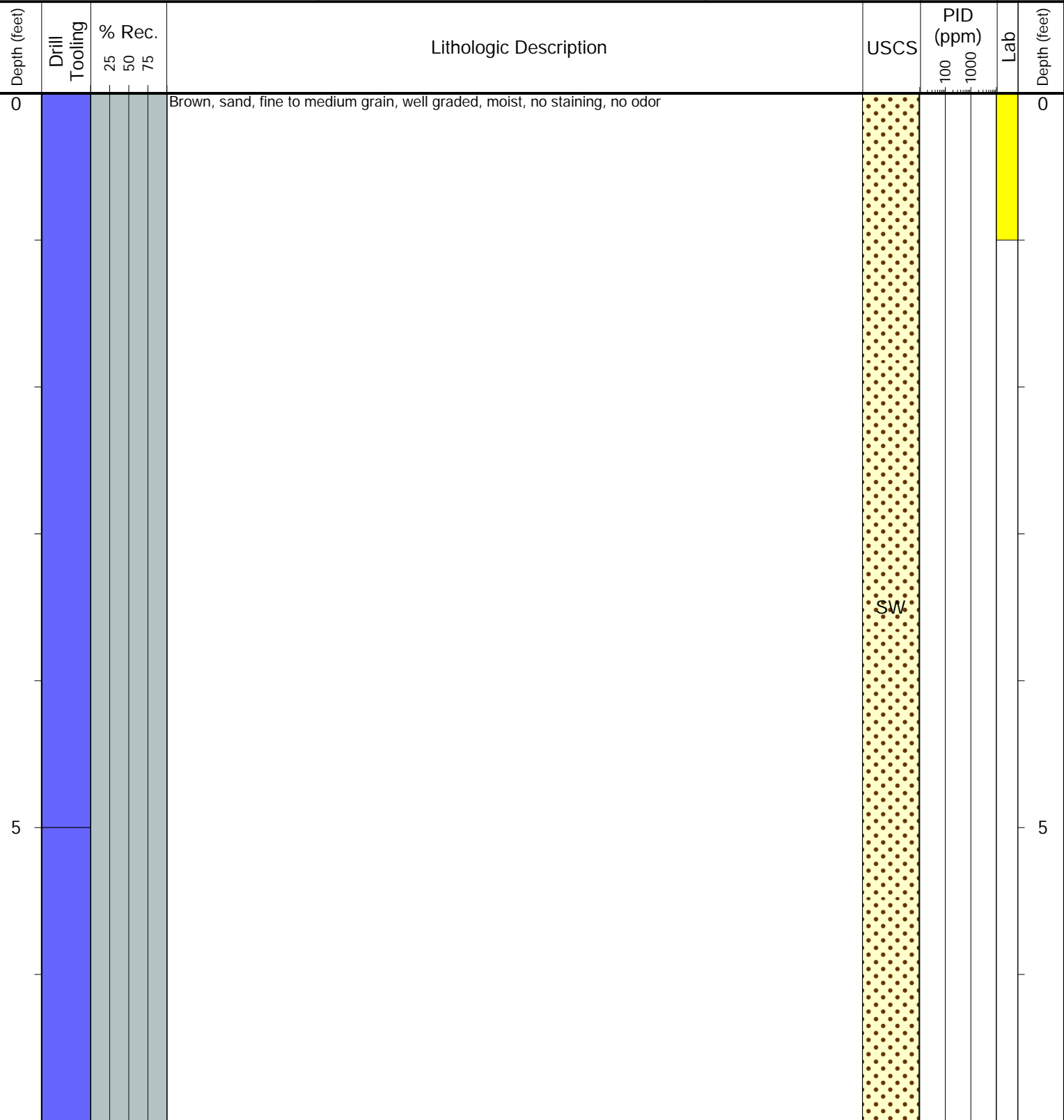
- Geotechnical Lab
- Analytical Chemistry Lab
- Geotechnical & Analytical Chemistry Lab



CLIENT: Noble
LOGGED BY: Ulisies Sandoval
PROJECT MANAGER: Mike Mendina
DRILLING CONTRACTOR: Tasman
DRILLING EQUIPMENT: Hand Auger
DRILL BIT SIZE (INCHES): 3.25
DATE STARTED - COMPLETED: 12/17/24 - 12/17/24
TOTAL WELL DEPTH (FT. BGS): 7
DEPTH TO WATER (FT. BGS): Not Encountered

Diller 42-13
BORING/WELL ID: SB08
LOCATION: SW of excavation
LATITUDE (NAD 83): 40.225301
LONGITUDE (NAD 83): -104.609669
GROUND ELEVATION (FT. AMSL): Not Measured
ABANDONMENT METHOD: Native Material

4725 Independence St.
Wheat Ridge, CO 80033



Drilling / Sample Method:

- Macro-Core
- Hand Auger
- Expendable Well Tip
- HydroPunch Groundwater Sampler

Laboratory Sample Types:

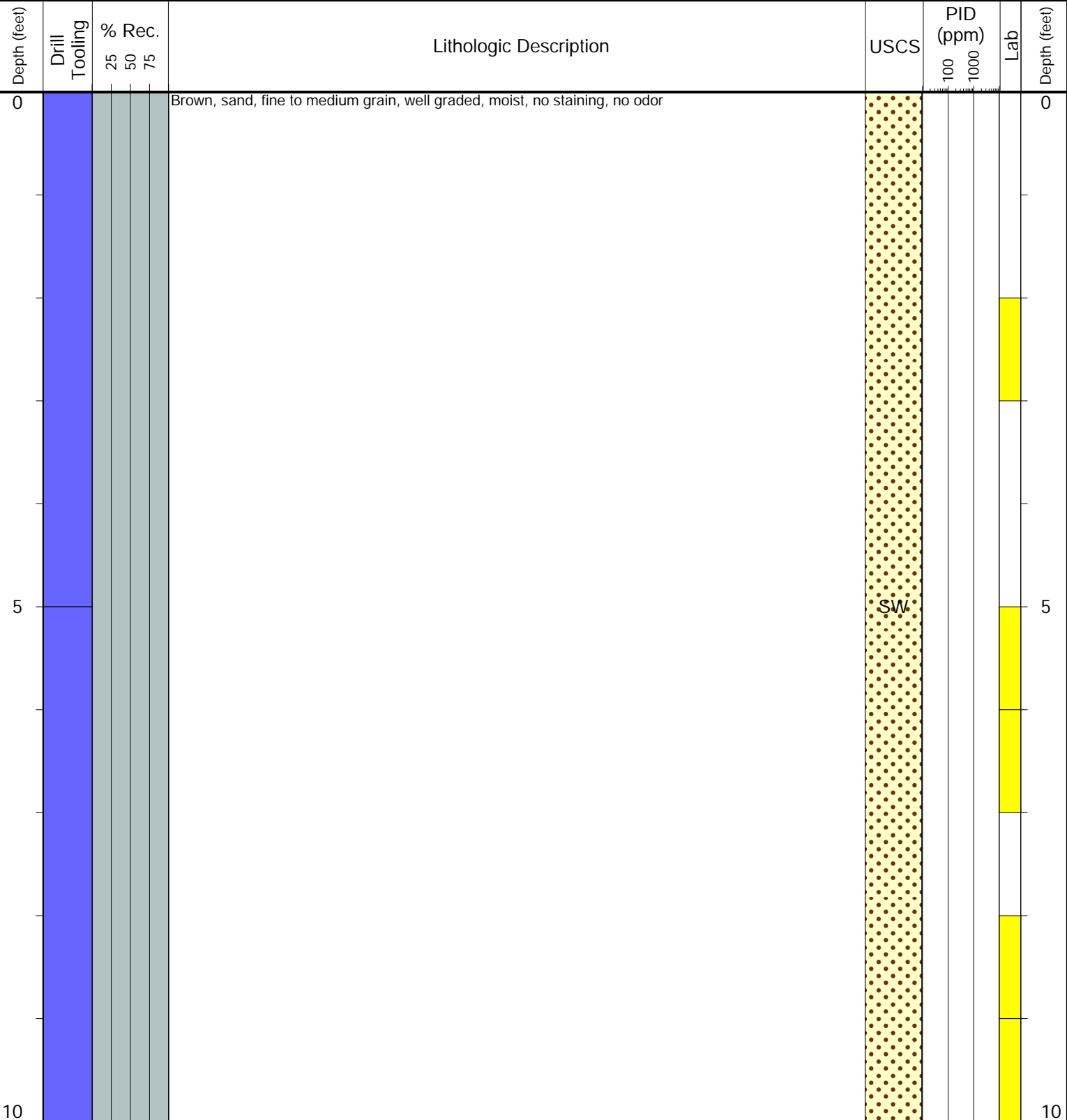
- Geotechnical Lab
- Analytical Chemistry Lab
- Geotechnical & Analytical Chemistry Lab



CLIENT: Noble
LOGGED BY: Ulisies Sandoval
PROJECT MANAGER: Mike Mendina
DRILLING CONTRACTOR: Tasman
DRILLING EQUIPMENT: Hand Auger
DRILL BIT SIZE (INCHES): 3.25
DATE STARTED - COMPLETED: 12/17/24 - 12/17/24
TOTAL WELL DEPTH (FT. BGS): 10
DEPTH TO WATER (FT. BGS): Not Encountered

Diller 42-13
BORING/WELL ID: BKG02
LOCATION: NW background
LATITUDE (NAD 83): 40.225475
LONGITUDE (NAD 83): -104.609904
GROUND ELEVATION (FT. AMSL): Not Measured
ABANDONMENT METHOD: Native Material

4725 Independence St.
Wheat Ridge, CO 80033



Drilling / Sample Method:

- Macro-Core
- Hand Auger
- Expendable Well Tip
- HydroPunch Groundwater Sampler

Laboratory Sample Types:

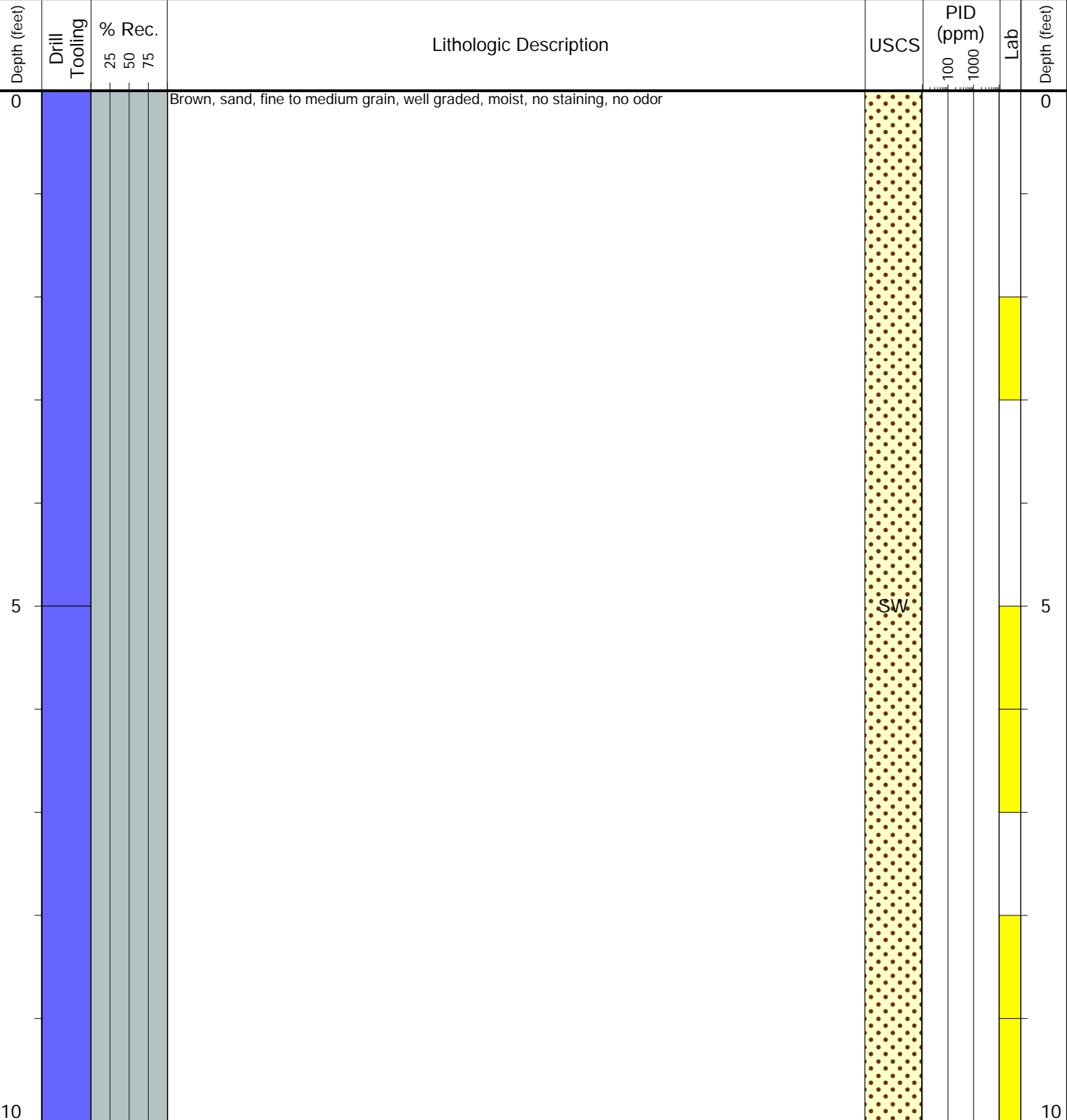
- Geotechnical Lab
- Analytical Chemistry Lab
- Geotechnical & Analytical Chemistry Lab



CLIENT: Noble
LOGGED BY: Ulisies Sandoval
PROJECT MANAGER: Mike Mendina
DRILLING CONTRACTOR: Tasman
DRILLING EQUIPMENT: Hand Auger
DRILL BIT SIZE (INCHES): 3.25
DATE STARTED - COMPLETED: 12/17/24 - 12/17/24
TOTAL WELL DEPTH (FT. BGS): 10
DEPTH TO WATER (FT. BGS): Not Encountered

Diller 42-13
BORING/WELL ID: BKG03
LOCATION: S background
LATITUDE (NAD 83): 40.225100
LONGITUDE (NAD 83): -104.609612
GROUND ELEVATION (FT. AMSL): Not Measured
ABANDONMENT METHOD: Native Material

4725 Independence St.
Wheat Ridge, CO 80033



Drilling / Sample Method:

- Macro-Core
- Hand Auger
- Expendable Well Tip
- HydroPunch Groundwater Sampler

Laboratory Sample Types:

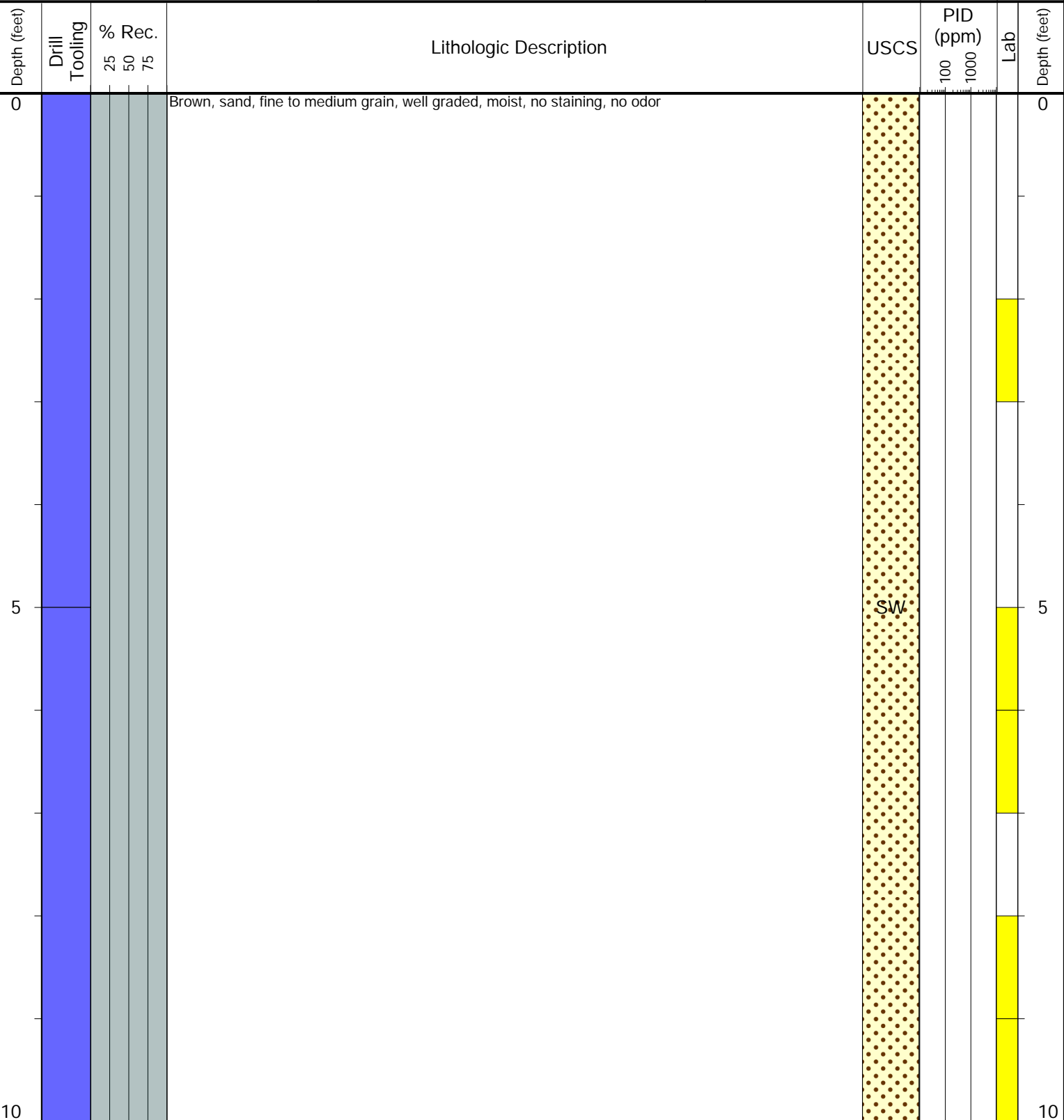
- Geotechnical Lab
- Analytical Chemistry Lab
- Geotechnical & Analytical Chemistry Lab



CLIENT: Noble
LOGGED BY: Ulisies Sandoval
PROJECT MANAGER: Mike Mendina
DRILLING CONTRACTOR: Tasman
DRILLING EQUIPMENT: Hand Auger
DRILL BIT SIZE (INCHES): 3.25
DATE STARTED - COMPLETED: 12/17/24 - 12/17/24
TOTAL WELL DEPTH (FT. BGS): 10
DEPTH TO WATER (FT. BGS): Not Encountered

Diller 42-13
BORING/WELL ID: BKG04
LOCATION: W background
LATITUDE (NAD 83): 40.225320
LONGITUDE (NAD 83): -104.610043
GROUND ELEVATION (FT. AMSL): Not Measured
ABANDONMENT METHOD: Native Material

4725 Independence St.
Wheat Ridge, CO 80033



Drilling / Sample Method:

- Macro-Core
- Hand Auger
- Expendable Well Tip
- HydroPunch Groundwater Sampler

Laboratory Sample Types:

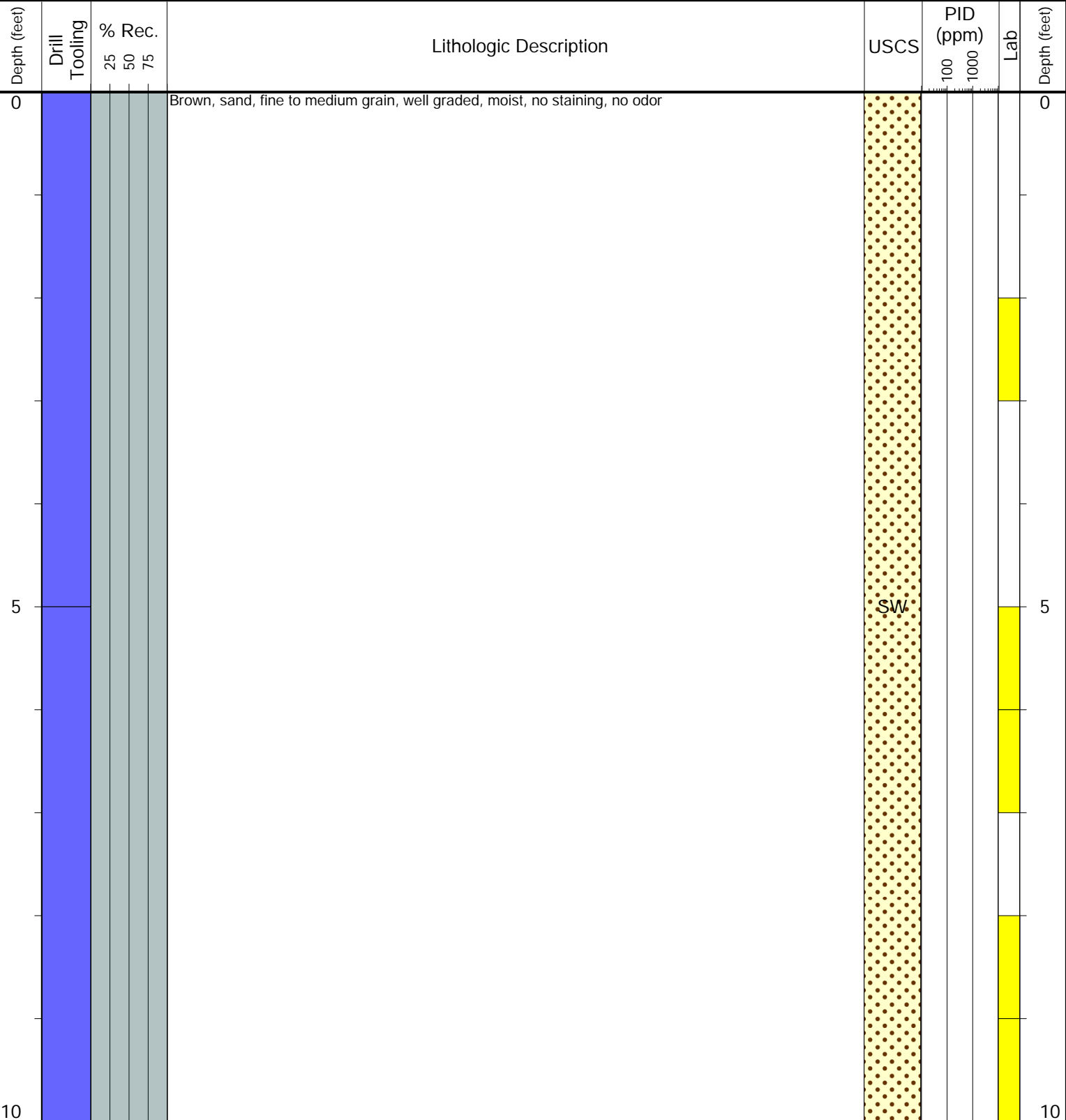
- Geotechnical Lab
- Analytical Chemistry Lab
- Geotechnical & Analytical Chemistry Lab



CLIENT: Noble
LOGGED BY: Ulisies Sandoval
PROJECT MANAGER: Mike Mendina
DRILLING CONTRACTOR: Tasman
DRILLING EQUIPMENT: Hand Auger
DRILL BIT SIZE (INCHES): 3.25
DATE STARTED - COMPLETED: 12/17/24 - 12/17/24
TOTAL WELL DEPTH (FT. BGS): 10
DEPTH TO WATER (FT. BGS): Not Encountered

Diller 42-13
BORING/WELL ID: BKG05
LOCATION: NE background
LATITUDE (NAD 83): 40.225430
LONGITUDE (NAD 83): -104.609266
GROUND ELEVATION (FT. AMSL): Not Measured
ABANDONMENT METHOD: Native Material

4725 Independence St.
Wheat Ridge, CO 80033



Drilling / Sample Method:

- Macro-Core
- Hand Auger
- Expendable Well Tip
- HydroPunch Groundwater Sampler

Laboratory Sample Types:

- Geotechnical Lab
- Analytical Chemistry Lab
- Geotechnical & Analytical Chemistry Lab