

Well Name & API: **CACHE 17-52, 05-123-25485**



**Flowline Abandonment Type:**  
Partial Abandon in Place to area of conflict due to third-party pipeline crossing.

**Flowlines**

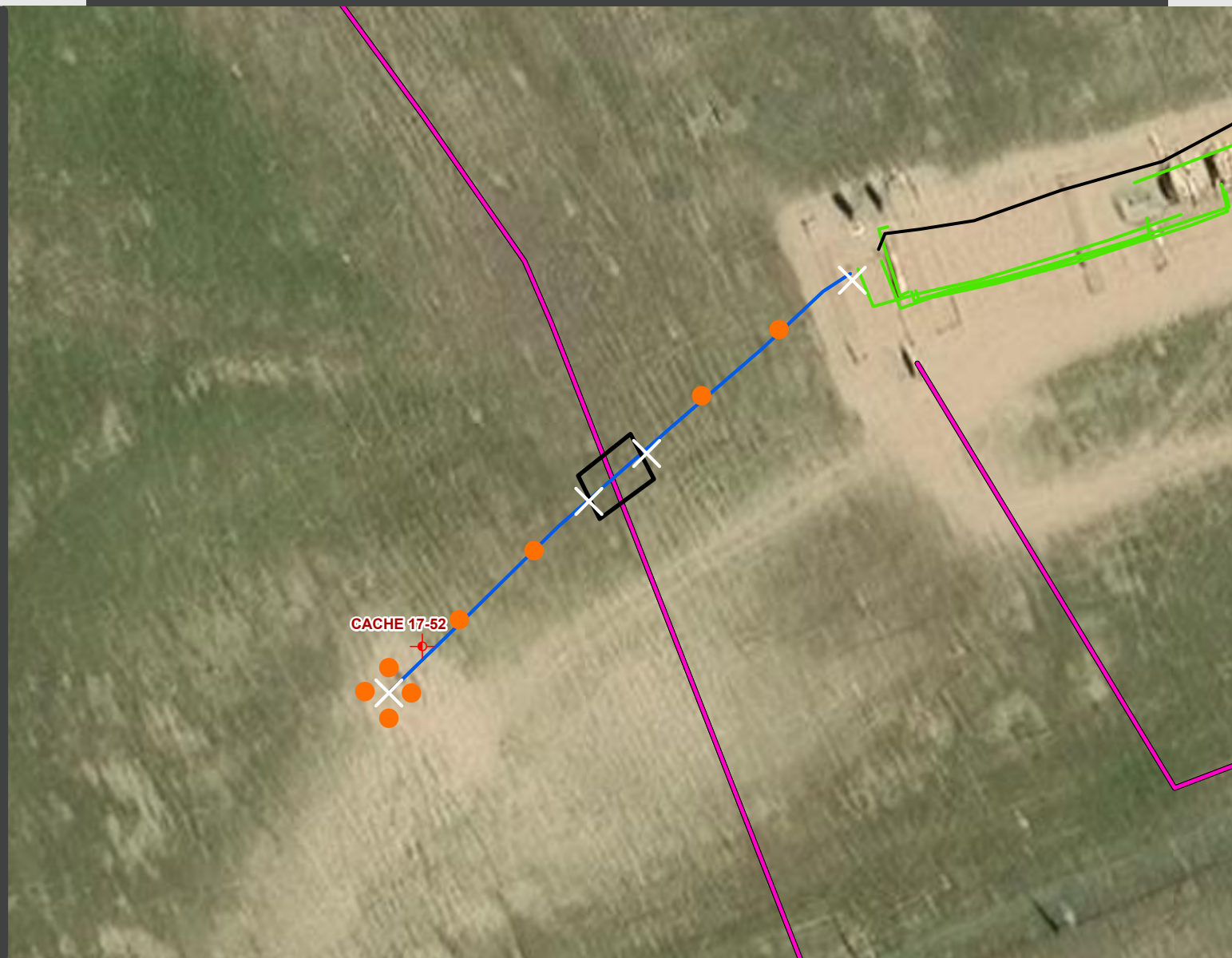
- Abandoned
- Active
- Out of Service
- Pre-Commissioned
- Removed
- Turned into Air Line
- Area of Conflict  
(Proposed Abandon-in-Place Area)
- Proposed Soil Sample Location
- Field Screening Location

**Wells**

- Active Well
- Abandoned Location
- Plugged & Abandoned
- Producing
- Shut-In
- Temporarily Abandoned
- Waiting on Completion

**Third-Party Pipelines**

- NWI Wetlands



**Well Latitude/Longitude:** 40.4911400/-104.4650600  
**Flowline Length (ft):** 204

**Flowline Point A Latitude/Longitude:** 40.4911013/-104.4650954  
**Flowline Point B Latitude/Longitude:** 40.4914717/-104.4645485

Created by: CJENCK  
Date: 3/31/2025

