

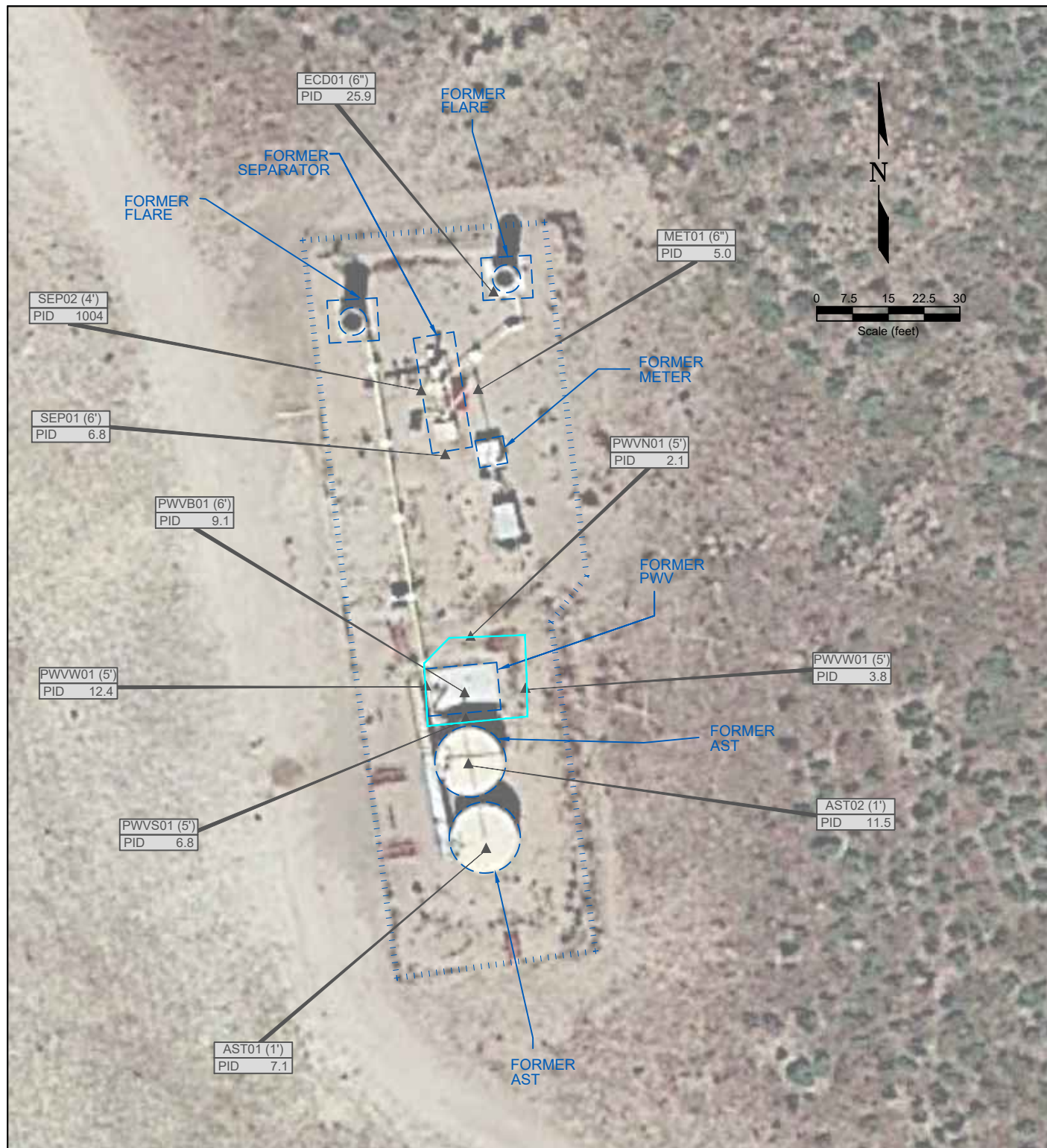
USGS 7.5 MINUTE SERIES (TOPOGRAPHIC)

Figure 1
SITE LOCATION MAP

NOBLE ENERGY INC - SPIKE STATE CC-64N63W 30NESW
 NESW Sec. 30, T4N, R63W, 6th PM
 Weld County, Colorado
 40.280778°, -104.483776°

Project # CO23-156	API #	Facility # 317854
Date 08/26/2023	Remediation # 26863	Filename 23156T





LEGEND

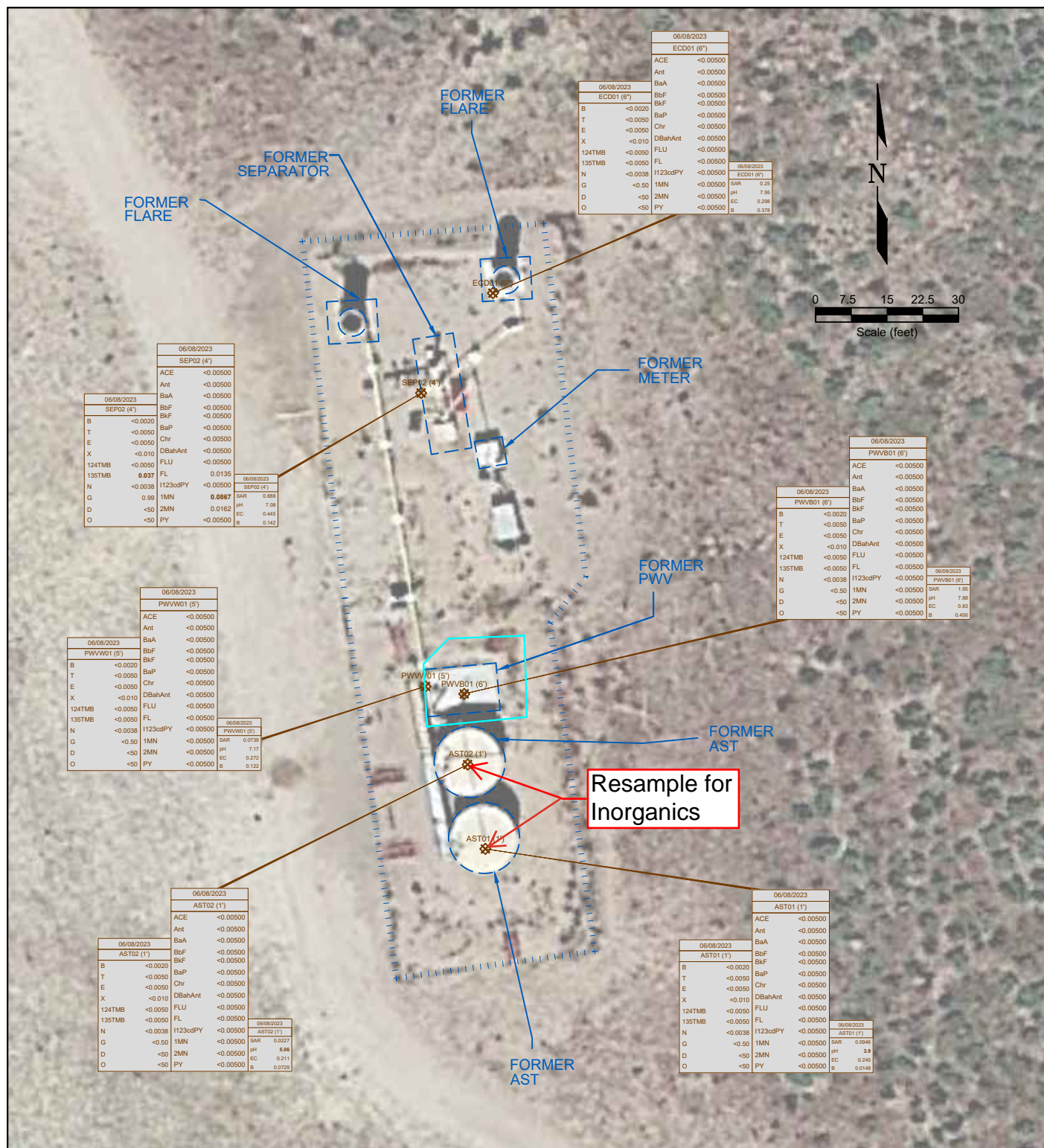
● WELLHEAD LOCATION	○ ABOVE GROUND STORAGE TANK	FORMER FORMER FACILITY	CONTAINMENT BERM
▲ PID READING LOCATION			FENCE LINE
			EXTENT OF EXCAVATION
FL01 PID 0.1	PID READING LOCATION IDENTIFICATION PHOTO IONIZATION DETECTION (ppm)		

Figure 2
SITE MAP

NOBLE ENERGY INC - SPIKE STATE CC-64N63W 30NESW
 NESW Sec. 30, T4N, R63W, 6th PM
 Weld County, Colorado
 40.280778°,-104.483776°

Project # CO23-156	API #	Facility # 317854
Date 08/26/2023	Remediation # 26863	Filename 23156Q





LEGEND

- WELLHEAD LOCATION
- ABOVE GROUND STORAGE TANK
- FORMER FACILITY
- CONTAINMENT BERM
- FENCE LINE
- EXTENT OF EXCAVATION

DATE SAMPLED	SAMPLE ID and DEPTH (ft)	DATE SAMPLED	SAMPLE ID and DEPTH (ft)	DATE SAMPLED	SAMPLE ID and DEPTH (ft)
4/7/2023	FL01 (4')	4/7/2023	FL01 (4')	4/7/2023	FL01 (4')
ACE	<0.00500	ACE	<0.00500	ACE	<0.00500
Ant	<0.00500	Ant	<0.00500	Ant	<0.00500
BaA	<0.00500	BaA	<0.00500	BaA	<0.00500
BbF	<0.00500	BbF	<0.00500	BbF	<0.00500
BkF	<0.00500	BkF	<0.00500	BkF	<0.00500
BaP	<0.00500	BaP	<0.00500	BaP	<0.00500
Chr	<0.00500	Chr	<0.00500	Chr	<0.00500
DBahAnt	<0.00500	DBahAnt	<0.00500	DBahAnt	<0.00500
FLU	<0.00500	FLU	<0.00500	FLU	<0.00500
FL	<0.00500	FL	<0.00500	FL	<0.00500
124TMB	<0.00500	124TMB	<0.00500	124TMB	<0.00500
135TMB	<0.00500	135TMB	<0.00500	135TMB	<0.00500
N	<0.0038	N	<0.0038	N	<0.0038
G	<0.50	G	<0.50	G	<0.50
D	<50	D	<50	D	<50
O	<50	O	<50	O	<50

Figure 3
SOIL CHEMISTRY MAP

NOBLE ENERGY INC - SPIKE STATE CC-64N63W 30NESW
NESW Sec. 30, T4N, R63W, 6th PM
Weld County, Colorado
40.280778°, -104.483776°

Project #	API #	Facility #	
CO23-156		317854	
Date	Remediation #	Filename	
08/26/2023	26863	23156Q	