

Wellhead Closure Checklist

COGCC Rule 911.a.(4) Environmental Site Closure Assessment Field Form

Additional attachments (optional):		Pit Closure <u> </u>		Tank Battery Closure <u> </u>		Flowline Closure <u> </u>		Partially Buried Vault Closure <u> </u>	
Site Name & COGCC Facility Number: Calvary USX #EE29-03D		Date: 06/26/23					Remediation Project #: 29728		
Associated Wells: 05-123-33671		Age of Site: Years					Number of Photos Attached: 1		
Location: (GPS coordinates of wellhead or southeastern most wellhead for multiple)						40.549550 / -104.695170			
General Condition of Site: (General observations regarding housekeeping, corrosion, waste management, etc.) Good Condition									
USCS Soil Type: Silty CLAY				Estimated Depth to Groundwater: Approx. 20-30'					
Hydrocarbon Impacted Soils / Spills: (Note estimated size and if impact appears to be surficial or extends to an unknown depth) Slight hydrocarbon odor and black staining observed in excavation.									
Salt Crusted Soils or Impacted Vegetation: (Note estimated size and if impact appears to be surficial or extends to an unknown depth) None observed.									
Wellhead(s)									
Well API	05-123-33671								
Age	Years								
Condition of surface around wellhead	Good - No Odor/Staining								
PID Readings	N/A - Excavated upon arrival								
Condition of subsurface (staining present)	HC odor and staining observed								
PID Readings	85.4	10.1	7.4	8.0	14.9				
Sample taken? Location/Sample ID#	WH-SS-01	WH-SS-02	WH-SS-03	WH-SS-04	WH-FS-01				
Photo Number(s)	See photolog								
Other observations regarding wellheads: Well casing cut/capped following assessment.									
Summary									
Was impacted soil identified? No <input type="checkbox"/> Yes - less than 10 cubic yards <input checked="" type="checkbox"/> Yes - more than 10 cubic yards <input type="checkbox"/>									
Total number of samples field screened: 5				Total number of samples collected: 5					
Highest PID Reading: 85.4				Total number of samples submitted to lab for analysis: 5					
If more than 10 cubic yards of impacted soil were observed:									
Vertical extent:				Estimated spill volume:					
N/A									
Lateral extent:				Volume of soil removed:					
Is additional investigation required?									
Was groundwater encountered during the investigation? <input checked="" type="checkbox"/> No <input type="checkbox"/> Yes - not impacted or in contact with impacted soils <input type="checkbox"/> Yes - groundwater impacted and/or in contact with impacted soils									
Measured depth to groundwater:				Was remedial groundwater removal conducted? Yes <input type="checkbox"/> No <input type="checkbox"/>					
Date Groundwater was encountered:				Commencement date of removal:					
Sheen on groundwater? Yes <input type="checkbox"/> No <input type="checkbox"/>				Volume of groundwater removed prior to sampling:					
Free product observed? Yes <input type="checkbox"/> No <input type="checkbox"/>				N/A					
Total number of samples collected:				Total Volume of groundwater removed:					
Total number of samples submitted to lab for analysis:									



FIGURES

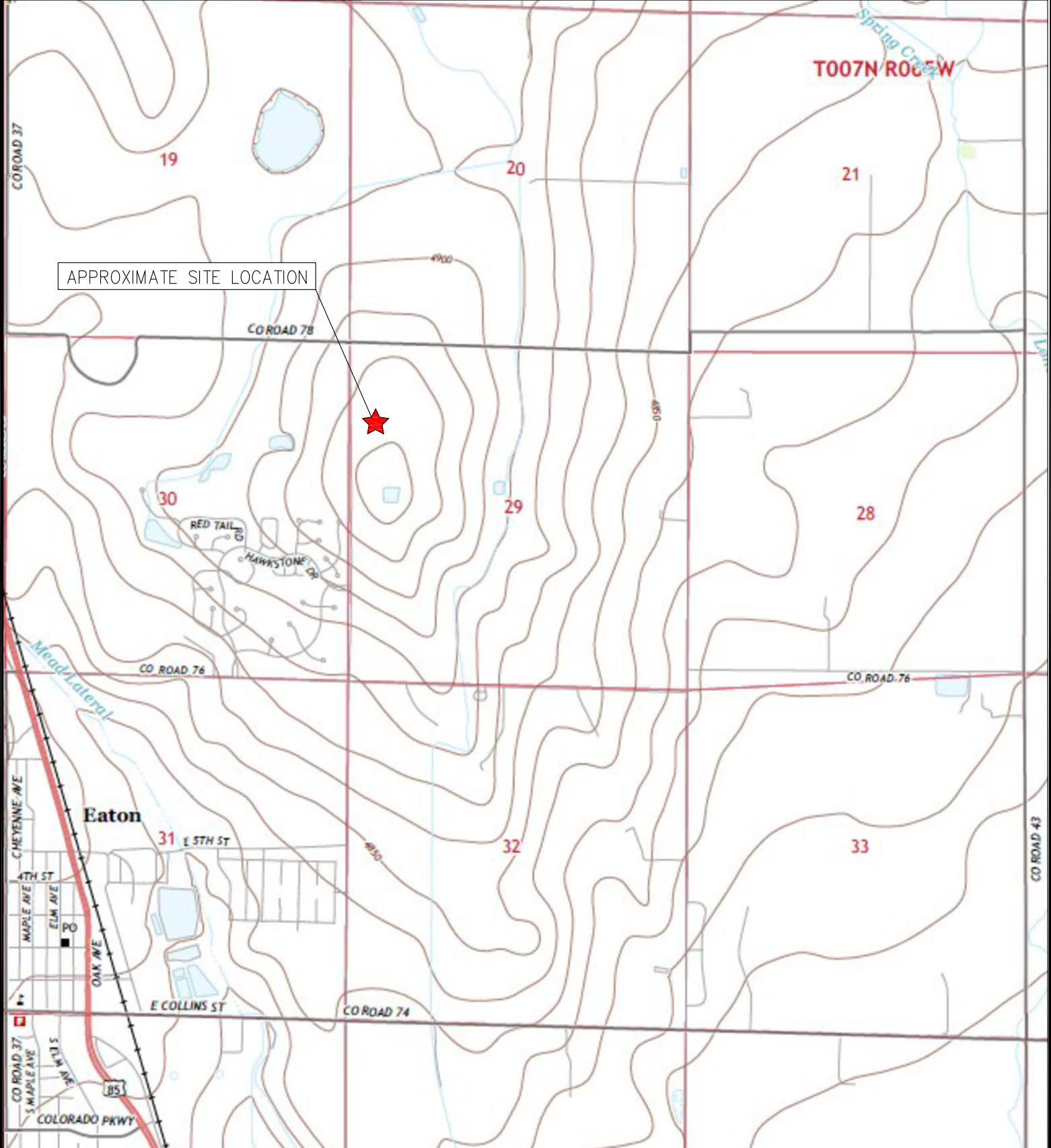
Figure 1: Topographic Site Location Map

Figure 2: Aerial Site Location Map

Figure 3: Soil Analytical Map

Figure 4: Polycyclic Aromatic Hydrocarbons Map

Figure 5: Metals in Soil Map



TOPOGRAPHIC SITE LOCATION MAP
 CALVARY USX #EE29-03D
 CLOSURE ASSESSMENT
 40.549550 / -104.695170
 SW¼ NW¼ SEC.29 T7N R65W 6PM
 WELD COUNTY, COLORADO
 API # 05-123-33671
 REMEDIATION # 29728



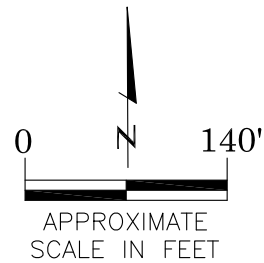
EAGLE
 ENVIRONMENTAL
 CONSULTING, LLC

8000 W 44th Ave, Wheat Ridge, CO 80033
 Ph: 303-433-0479 • F: 303-325-5449



LEGEND

- FORMER CALVARY USX #EE29-03D WELLHEAD (PLUGGED AND ABANDONED)
- ASSOCIATED SEPARATOR
- APPROXIMATE FLOWLINE LOCATION



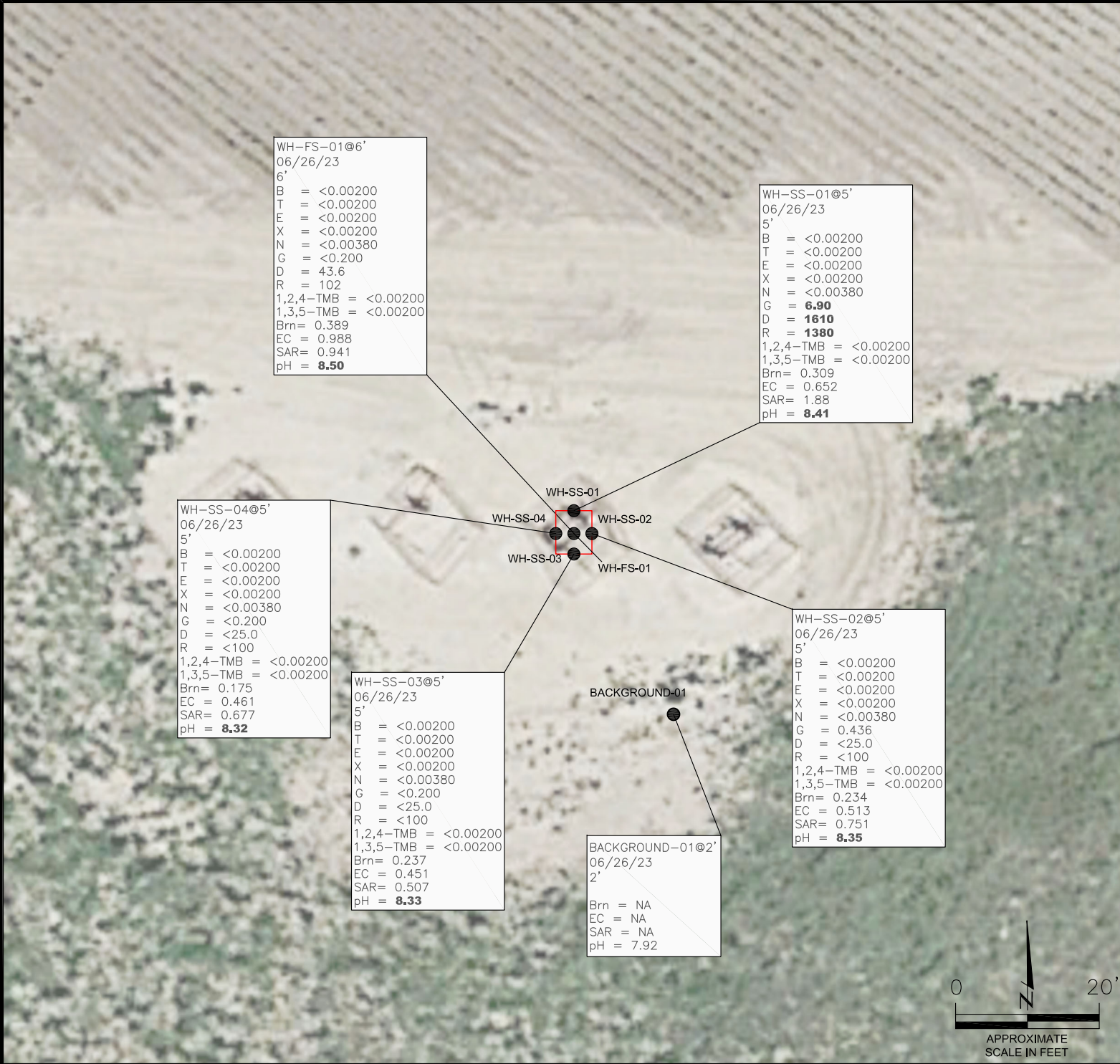
AERIAL SITE LOCATION MAP
 CALVARY USX #EE29-03D
 CLOSURE ASSESSMENT
 40.549550 / -104.695170
 SW¼ NW¼ SEC.29 T7N R65W 6PM
 WELD COUNTY, COLORADO
 API # 05-123-33671
 REMEDIATION # 29728

FIGURE NO.
2

DRAWN BY:
JF



EAGLE
 ENVIRONMENTAL
 CONSULTING, LLC
 8000 W 44th Ave, Wheat Ridge, CO 80033
 Ph: 303-433-0479 • F: 303-325-5449



WH-FS-01@6'
06/26/23
6'
B = <0.00200
T = <0.00200
E = <0.00200
X = <0.00200
N = <0.00380
G = <0.200
D = 43.6
R = 102
1,2,4-TMB = <0.00200
1,3,5-TMB = <0.00200
Brn= 0.389
EC = 0.988
SAR= 0.941
pH = **8.50**

WH-SS-01@5'
06/26/23
5'
B = <0.00200
T = <0.00200
E = <0.00200
X = <0.00200
N = <0.00380
G = **6.90**
D = **1610**
R = **1380**
1,2,4-TMB = <0.00200
1,3,5-TMB = <0.00200
Brn= 0.309
EC = 0.652
SAR= 1.88
pH = **8.41**

WH-SS-04@5'
06/26/23
5'
B = <0.00200
T = <0.00200
E = <0.00200
X = <0.00200
N = <0.00380
G = <0.200
D = <25.0
R = <100
1,2,4-TMB = <0.00200
1,3,5-TMB = <0.00200
Brn= 0.175
EC = 0.461
SAR= 0.677
pH = **8.32**

WH-SS-03@5'
06/26/23
5'
B = <0.00200
T = <0.00200
E = <0.00200
X = <0.00200
N = <0.00380
G = <0.200
D = <25.0
R = <100
1,2,4-TMB = <0.00200
1,3,5-TMB = <0.00200
Brn= 0.237
EC = 0.451
SAR= 0.507
pH = **8.33**

WH-SS-02@5'
06/26/23
5'
B = <0.00200
T = <0.00200
E = <0.00200
X = <0.00200
N = <0.00380
G = 0.436
D = <25.0
R = <100
1,2,4-TMB = <0.00200
1,3,5-TMB = <0.00200
Brn= 0.234
EC = 0.513
SAR= 0.751
pH = **8.35**

BACKGROUND-01@2'
06/26/23
2'
Brn = NA
EC = NA
SAR = NA
pH = 7.92

LEGEND

- WELLHEAD ASSESSMENT BOUNDARIES
- APPROXIMATE LOCATION OF SOIL SAMPLES SUBMITTED FOR LABORATORY ANALYSIS

PARAMETERS

SAMPLE LOCATION
DATE
DEPTH (FEET)
B = BENZENE (mg/kg)
T = TOLUENE (mg/kg)
E = ETHYLBENZENE (mg/kg)
X = TOTAL XYLENES (mg/kg)
N = NAPHTHALENE (mg/kg)
G = TPH-GRO (mg/kg)
D = TPH-DRO (mg/kg)
R = TPH-RRO (mg/kg)
1,2,4-TMB = 1,2,4 TRIMETHYLBENZENE (mg/kg)
1,3,5-TMB = 1,3,5 TRIMETHYLBENZENE (mg/kg)
Brn= BORON (mg/L)
EC = SPECIFIC CONDUCTANCE (mmhos/cm)
SAR= SODIUM ADSORPTION RATIO
pH = pH (pH UNITS)

mg/kg = MILLIGRAMS PER KILOGRAM
mg/L = MILLIGRAMS PER LITER
mmhos/cm = MILLIMHOS PER CENTIMETER

NA = NOT ANALYZED

TPH-GRO = TOTAL PETROLEUM HYDROCARBONS – GASOLINE RANGE ORGANICS
TPH-DRO = TOTAL PETROLEUM HYDROCARBONS – DIESEL RANGE ORGANICS
TPH-RRO = TOTAL PETROLEUM HYDROCARBONS – RESIDUAL RANGE ORGANICS

NOTES:
VALUES PRESENTED WITH A LESS THAN SYMBOL (<) DID NOT CONTAIN CONCENTRATIONS AT OR ABOVE LABORATORY DETECTION LIMITS.

VALUES PRESENTED IN **BOLD** EXCEED ECMC TABLE 915-1 REGULATORY LIMITS.

ECMC = ENERGY & CARBON MANAGEMENT COMMISSION

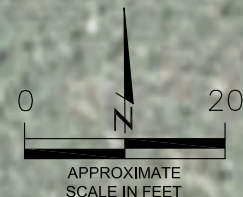
SOIL ANALYTICAL MAP
CALVARY USX #EE29-03D
CLOSURE ASSESSMENT
40.549550 / -104.695170
SW¼ NW¼ SEC.29 T7N R65W 6PM
WELD COUNTY, COLORADO
API # 05-123-33671
REMEDATION # 29728

FIGURE NO.
3

DRAWN BY:
CK



EAGLE
ENVIRONMENTAL
CONSULTING, LLC
8000 W 44th Ave, Wheat Ridge, CO 80033
Ph: 303-433-0479 • F: 303-325-5449



LEGEND

- WELLHEAD ASSESSMENT BOUNDARIES
- APPROXIMATE LOCATION OF SOIL SAMPLES SUBMITTED FOR LABORATORY ANALYSIS

PARAMETERS

SAMPLE LOCATION
DATE SAMPLE COLLECTED
APPROXIMATE DEPTH

POLYCYCLIC AROMATIC HYDROCARBONS (PAHs) (mg/kg)

mg/kg = MILLIGRAMS PER KILOGRAM

NOTES:

VALUES PRESENTED WITH A LESS THAN SYMBOL (<) DID NOT CONTAIN CONCENTRATIONS AT OR ABOVE LABORATORY DETECTION LIMITS.

VALUES PRESENTED IN **BOLD** EXCEED ECMC TABLE 915-1 REGULATORY LIMITS.

ECMC = ENERGY & CARBON MANAGEMENT COMMISSION

WH-FS-01@6'
06/26/23
6'

1-Methylnaphthalene = <0.00201
2-Methylnaphthalene = <0.00201
Acenaphthene = <0.00067
Anthracene = <0.00067
Benzo(a)anthracene = <0.00067
Benzo(a)pyrene = 0.000654
Benzo(b)fluoranthene = <0.00067
Benzo(k)fluoranthene = <0.00067
Chrysene = 0.00156
Dibenzo(a,h)anthracene = <0.00067
Fluoranthene = 0.000429
Fluorene = <0.00067
Indeno(1,2,3-CD)pyrene = <0.00067
Pyrene = <0.00067

WH-SS-01@5'
06/26/23
5'

1-Methylnaphthalene = <0.00201
2-Methylnaphthalene = <0.00201
Acenaphthene = <0.00067
Anthracene = <0.00067
Benzo(a)anthracene = 0.00159
Benzo(a)pyrene = <0.00067
Benzo(b)fluoranthene = <0.00067
Benzo(k)fluoranthene = <0.00067
Chrysene = 0.00497
Dibenzo(a,h)anthracene = 0.000645
Fluoranthene = 0.000805
Fluorene = <0.00067
Indeno(1,2,3-CD)pyrene = <0.00067
Pyrene = 0.00125

WH-SS-04@5'
06/26/23
5'

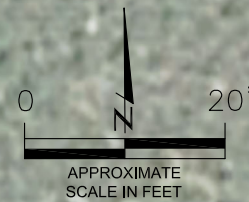
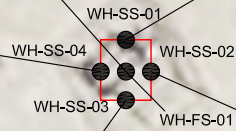
1-Methylnaphthalene = <0.00201
2-Methylnaphthalene = <0.00201
Acenaphthene = <0.00067
Anthracene = <0.00067
Benzo(a)anthracene = 0.000646
Benzo(a)pyrene = 0.00133
Benzo(b)fluoranthene = 0.00106
Benzo(k)fluoranthene = 0.000453
Chrysene = 0.0014
Dibenzo(a,h)anthracene = <0.00067
Fluoranthene = 0.000768
Fluorene = <0.00067
Indeno(1,2,3-CD)pyrene = 0.000823
Pyrene = 0.000734

WH-SS-03@5'
06/26/23
5'

1-Methylnaphthalene = <0.00201
2-Methylnaphthalene = <0.00201
Acenaphthene = <0.00067
Anthracene = <0.00067
Benzo(a)anthracene = <0.00067
Benzo(a)pyrene = <0.00067
Benzo(b)fluoranthene = <0.00067
Benzo(k)fluoranthene = <0.00067
Chrysene = <0.00067
Dibenzo(a,h)anthracene = <0.00067
Fluoranthene = <0.00067
Fluorene = <0.00067
Indeno(1,2,3-CD)pyrene = <0.00067
Pyrene = <0.00067

WH-SS-02@5'
06/26/23
5'

1-Methylnaphthalene = <0.00201
2-Methylnaphthalene = <0.00201
Acenaphthene = <0.00067
Anthracene = <0.00067
Benzo(a)anthracene = <0.00067
Benzo(a)pyrene = <0.00067
Benzo(b)fluoranthene = <0.00067
Benzo(k)fluoranthene = <0.00067
Chrysene = <0.00067
Dibenzo(a,h)anthracene = <0.00067
Fluoranthene = <0.00067
Fluorene = <0.00067
Indeno(1,2,3-CD)pyrene = <0.00067
Pyrene = <0.00067



POLYCYCLIC AROMATIC HYDROCARBONS MAP

CALVARY USX #EE29-03D
CLOSURE ASSESSMENT
40.549550 / -104.695170
SW¼ NW¼ SEC.29 T7N R65W 6PM
WELD COUNTY, COLORADO
API # 05-123-33671
REMEDATION # 29728

FIGURE NO.
4

DRAWN BY:
CK

EAGLE ENVIRONMENTAL CONSULTING, LLC
8000 W 44th Ave, Wheat Ridge, CO 80033
Ph: 303-433-0479 • F: 303-325-5449



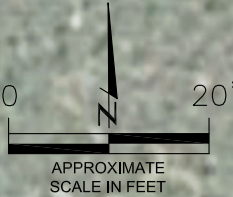
WH-SS-01@5'
06/26/23
5'

Arsenic = **2.94**
Barium = **82.8***
Cadmium = 0.212
Chromium (VI) = <0.251**
Copper = 9.87
Lead = <9.25
Nickel = <9.25
Selenium = 0.181
Silver = <0.0925
Zinc = <92.5

WH-SS-01
(NS) WH-SS-04 WH-SS-02 (NS)
WH-SS-03 (NS) WH-FS-01 (NS)

BACKGROUND-01
BACKGROUND-01@2'
06/26/23
2'

Arsenic = 4.97
Barium = 158*
Cadmium = 0.228
Chromium (VI) = NA
Copper = 16.0
Lead = 9.06
Nickel = 12.2
Selenium = 0.237
Silver = <0.0857
Zinc = <85.7



LEGEND

- - - WELLHEAD ASSESSMENT BOUNDARIES
- APPROXIMATE LOCATION OF SOIL SAMPLES SUBMITTED FOR LABORATORY ANALYSIS

PARAMETERS

SAMPLE LOCATION
DATE SAMPLE COLLECTED
APPROXIMATE DEPTH
Arsenic = (mg/kg)
Barium = (mg/kg)
Cadmium = (mg/kg)
Chromium (VI) = (mg/kg)
Copper = (mg/kg)
Lead = (mg/kg)
Nickel = (mg/kg)
Selenium = (mg/kg)
Silver = (mg/kg)
Zinc = (mg/kg)

mg/kg = MILLIGRAMS PER KILOGRAM

NA = NOT ANALYZED

NS = NOT SAMPLED

NOTES:
VALUES PRESENTED WITH A LESS THAN SYMBOL (<) DID NOT CONTAIN CONCENTRATIONS AT/OR ABOVE LABORATORY REPORTING LIMITS AND/OR MINIMUM DETECTION LIMITS.

VALUES PRESENTED IN **BOLD** EXCEED ECOM TABLE 915-1 REGULATORY LIMITS.

*VALUES EXCEED ECOM TABLE 915-1 PROTECTION OF GROUNDWATER SOIL SCREENING LEVELS, ONLY.

**ACHIEVABLE PRACTICAL QUANTITATIVE LIMITS FOR HEXAVALENT CHROMIUM (Cr VI) IN SOILS IS IN THE RANGE OF 0.1 TO 1 mg/kg.

ELEVATED METALS ARE NATURALLY OCCURRING IN COLORADO. LOCAL CLEAN-UP LEVELS ARE 1.25*BACKGROUND HIGH @ THAT DEPTH, WHERE APPLICABLE.

ECMC = ENERGY & CARBON MANAGEMENT COMMISSION

METALS IN SOIL MAP
CALVARY USX #EE29-03D
CLOSURE ASSESSMENT
40.549550 / -104.695170
SW¼ NW¼ SEC.29 T7N R65W 6PM
WELD COUNTY, COLORADO
API # 05-123-33671
REMEDATION # 29728

FIGURE NO.
5

DRAWN BY:
CK

EAGLE ENVIRONMENTAL CONSULTING, LLC
8000 W 44th Ave, Wheat Ridge, CO 80033
Ph: 303-433-0479 • F: 303-325-5449



TABLES

Table 1: Field Data Summary Table

Table 2: Summary of Volatile Organic Soil Chemistry Data

Table 3: Summary of Polycyclic Aromatic Hydrocarbon Soil Chemistry Data

Table 4: Summary of Soil Suitability for Reclamation

Table 5: Summary of Metals in Soil Chemistry Data

TABLE 1
FIELD DATA SUMMARY TABLE
NOBLE ENERGY 100322
CALVARY USX #EE29-03D, WELD COUNTY, COLORADO
REM # 29728

Sample ID	Sample Date	Depth	GPS Data		VOC Concentration (ppm)
			Latitude/Longitude		
WH-FS-01 @ 6'	6/26/2023	6	40.549543	-104.695183	14.9
WH-SS-01 @ 5'	6/26/2023	5	40.549550	-104.695183	85.4
WH-SS-02 @ 5'	6/26/2023	5	40.549543	-104.695171	10.1
WH-SS-03 @ 5'	6/26/2023	5	40.549536	-104.695181	7.4
WH-SS-04 @ 5'	6/26/2023	5	40.549543	-104.695190	8.0
Background-01 @ 2'	6/26/2023	2	40.549467	-104.695128	5.7

1. Global Positioning System (GPS) data is provided in decimal degrees using North American Datum (NAD) 83 UTMZone 13 North.

2. Volatile organic compound (VOC) concentrations are measured in the field using a photoionization detector (PID).

PDOP = Position Dilution of Precision

ppm = Parts per million

in. = Inches

ft. = Feet

bgs = Below ground surface

TABLE 2
SUMMARY OF VOLATILE ORGANIC SOIL CHEMISTRY DATA
NOBLE ENERGY 100322
CALVARY USX #EE29-03D, WELD COUNTY, COLORADO
REM # 29728

Sample ID	Sample Date	Depth (ft)	Benzene (mg/kg)	Toluene (mg/kg)	Ethyl-Benzene (mg/kg)	Xylenes (mg/kg)	1,2,4-Trimethyl-Benzene (mg/kg)	1,3,5-Trimethyl-Benzene (mg/kg)	Naphthalene (mg/kg)	TPH (mg/kg)	TPH GRO (mg/kg)	TPH DRO (mg/kg)	TPH ORO (mg/kg)
ECMC Table 915-1 Limits (Residential SSL)			1.2	490	5.8	58	30	27	2	500	500**		
ECMC Table 915-1 Limits (Protection of Groundwater SSL)			0.0026	0.69	0.78	9.9	0.0081	0.0087	0.0038	500	500**		
WH-FS-01 @ 6'	6/26/2023	6	<0.00200	<0.00200	<0.00200	<0.00200	<0.00200	<0.00200	<0.00380	<500	<0.200	43.6	102
WH-SS-01 @ 5'	6/26/2023	5	<0.00200	<0.00200	<0.00200	<0.00200	<0.00200	<0.00200	<0.00380	2996.9	6.90	1610	1380
WH-SS-02 @ 5'	6/26/2023	5	<0.00200	<0.00200	<0.00200	<0.00200	<0.00200	<0.00200	<0.00380	<500	0.436	<25.0	<100
WH-SS-03 @ 5'	6/26/2023	5	<0.00200	<0.00200	<0.00200	<0.00200	<0.00200	<0.00200	<0.00380	<500	<0.200	<25.0	<100
WH-SS-04 @ 5'	6/26/2023	5	<0.00200	<0.00200	<0.00200	<0.00200	<0.00200	<0.00200	<0.00380	<500	<0.200	<25.0	<100

1. Bold values are equal to or exceed the ECMC Table 915-1 limit(s)
2. Red & blue highlighted soil analytical values indicate an exceedance of the referenced soil screening level (SSL)
3. * Indicates laboratory minimum detection limit in excess of SSL
4. ** Summation of GRO+DRO+ORO must be less than 500 mg/kg

TABLE 3
SUMMARY OF POLYCYCLIC AROMATIC HYDROCARBON SOIL CHEMISTRY DATA
NOBLE ENERGY 100322
CALVARY USX #EE29-03D, WELD COUNTY, COLORADO
REM # 29728

Sample ID	Sample Date	Depth (ft)	Acenaphthene (mg/kg)	Anthracene (mg/kg)	Benzo (a) Anthracene (mg/kg)	Benzo (a) Pyrene (mg/kg)	Benzo (b) Fluoranthene (mg/kg)	Benzo (k) Fluoranthene (mg/kg)	Chrysene (mg/kg)	Dibenzo (a,h) Anthracene (mg/kg)	Fluoranthene (mg/kg)	Fluorene (mg/kg)	Indeno (1,2,3-cd) Pyrene (mg/kg)	Pyrene (mg/kg)	1-Methyl - Naphthalene (mg/kg)	2-Methyl- Naphthalene (mg/kg)
ECMC Table 915-1 Limits (Residential SSL)			360	1800	1.1	0.11	1.1	11	110	0.11	240	240	1.1	180	18	24
ECMC Table 915-1 Limits (Protection of Groundwater SSL)			0.55	5.8	0.011	0.24	0.3	2.9	9	0.096	8.9	0.54	0.98	1.3	0.006	0.019
WH-FS-01 @ 6'	6/26/2023	6	<0.00067	<0.00067	<0.00067	0.000654	<0.00067	<0.00067	0.00156	<0.00067	0.000429	<0.00067	<0.00067	<0.00067	<0.00201	<0.00201
WH-SS-01 @ 5'	6/26/2023	5	<0.00067	<0.00067	0.00159	<0.00067	<0.00067	<0.00067	0.00497	0.000645	0.000805	<0.00067	<0.00067	0.00125	<0.00201	<0.00201
WH-SS-02 @ 5'	6/26/2023	5	<0.00067	<0.00067	<0.00067	<0.00067	<0.00067	<0.00067	<0.00067	<0.00067	<0.00067	<0.00067	<0.00067	<0.00067	<0.00201	<0.00201
WH-SS-03 @ 5'	6/26/2023	5	<0.00067	<0.00067	<0.00067	<0.00067	<0.00067	<0.00067	<0.00067	<0.00067	<0.00067	<0.00067	<0.00067	<0.00067	<0.00201	<0.00201
WH-SS-04 @ 5'	6/26/2023	5	<0.00067	<0.00067	0.000646	0.00133	0.00106	0.000453	0.0014	<0.00067	0.000768	<0.00067	0.000823	0.000734	<0.00201	<0.00201

1. Bold values are equal to or exceed the ECMC Table 915-1 limit(s)

2. Red & blue highlighted soil analytical values indicate an exceedance of the referenced soil screening level (SSL)

3. * Indicates laboratory minimum detection limit in excess of SSL

NA - Not analyzed

TABLE 4
SUMMARY OF SOIL SUITABILITY FOR RECLAMATION
NOBLE ENERGY 100322
CALVARY USX #EE29-03D, WELD COUNTY, COLORADO
REM # 29728

Sample ID	Sample Date	Depth (ft)	pH (Standard Units)	EC (mmhos/cm)	SAR (Standard Units)	Boron (mg/L)
ECMC Table 915-1 Soil Suitability Limits			6 - 8.3	<4	<6	2
WH-FS-01 @ 6'	6/26/2023	6	8.50	0.988	0.941	0.389
WH-SS-01 @ 5'	6/26/2023	5	8.41	0.652	1.88	0.309
WH-SS-02 @ 5'	6/26/2023	5	8.35	0.513	0.751	0.234
WH-SS-03 @ 5'	6/26/2023	5	8.33	0.451	0.507	0.237
WH-SS-04 @ 5'	6/26/2023	5	8.32	0.461	0.677	0.175
Background-01 @ 2'	6/26/2023	2	7.92	NA	NA	NA
Maximum Background Concentration @ 2'			7.92			

1. Bold values are equal to or exceed the ECMC Table 915-1 limit(s)
 2. Blue highlighted soil analytical values indicate a regulatory exceedance
- NA - Not analyzed

TABLE 5
SUMMARY OF METALS IN SOIL CHEMISTRY DATA
NOBLE ENERGY 100322
CALVARY USX #EE29-03D, WELD COUNTY, COLORADO
REM # 29728

Sample ID	Sample Date	Depth (ft)	Arsenic (mg/kg)	Barium (mg/kg)	Cadmium (mg/kg)	Chromium (VI) (mg/kg)	Copper (mg/kg)	Lead (mg/kg)	Nickel (mg/kg)	Selenium (mg/kg)	Silver (mg/kg)	Zinc (mg/kg)
ECMC Table 915-1 Limits (Residential SSL)			0.68	15000	71	0.3	3100	400	1500	390	390	23000
ECMC Table 915-1 Limits (Protection of Groundwater SSL)			0.29	82	0.38	0.00067	46	14	26	0.26	0.8	370
WH-SS-01 @ 5'	6/26/2023	5	2.94	82.8	0.212	<0.251 *	9.87	<9.25	<9.25	0.181	<0.0925	<92.5
Background-01 @ 2'	6/26/2023	2	4.97	158	0.228	NA	16.0	9.06	12.2	0.237	<0.0857	<85.7
125% Maximum Background Concentration @ 2'			6.21	198	0.285		20.0	11.3	15.3	0.296		

1. Bold values are equal to or exceed the ECMC Table 915-1 limit(s)

2. Red & blue highlighted soil analytical values indicate an exceedance of the referenced soil screening level (SSL)

* Indicates laboratory minimum detection limit in excess of SSL

NA - Not analyzed



ATTACHMENT A

Photo Log

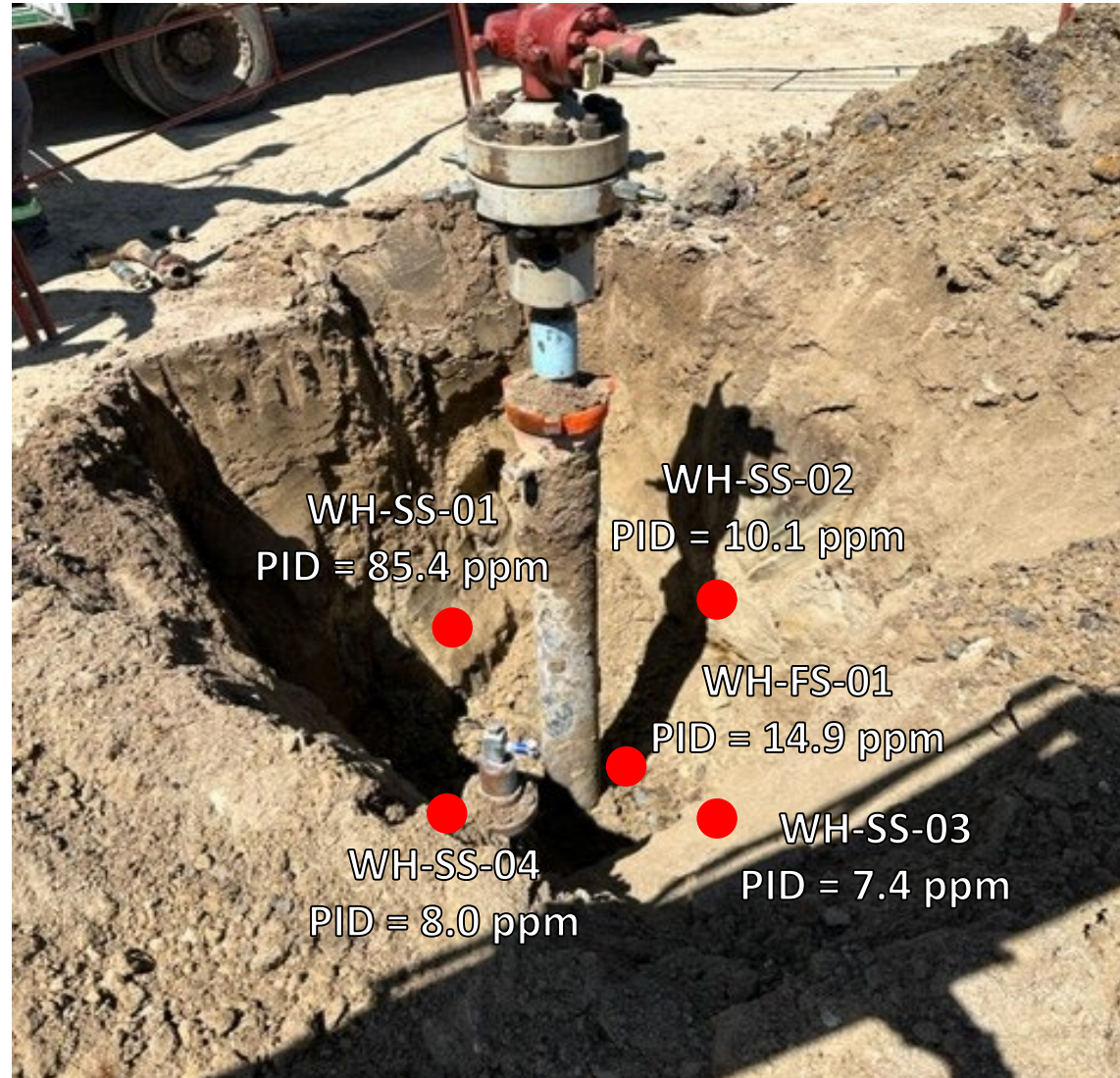
Calvary USX #EE29-03D
API # 05-123-33671
Remediation # 29728

Closure Assessment

June 2023



Wellhead Excavation – 06/26/23



Looking northeast

Slight petroleum hydrocarbon staining and odor observed