



**Radial Cement  
Bond Log  
Gamma Ray/CCL  
Temperature**

Company: Occidental Petroleum Corp.  
Well: McCuckin H32-32  
Field: Wattenberg  
County: Weld  
State: Colorado  
Country: USA

Location: API #: 0512331243  
Lat: 40.18159 Long: -104.69616  
SEC 32 TWP 3N RGE 65W  
Permanent Datum: Ground Level Elevation 4953'  
Log Measured From: KB=13'  
Drilling Measured From: Kelly Bushing

Other Services  
Elevation  
K.B. 4968'  
D.F. 4967'  
G.L. 4953'

Date: 5 April 2024

Run Number	One
Depth Driller	7882'
Depth Logger	3000'
Bottom Logged Interval	3000'
Top Log Interval	Surface
Open Hole Size	7.875"
Type Fluid	H2O
Density / Viscosity	~8.3#
Max. Recorded Temp.	128°F
Estimated Cement Top	See Log
Time Well Ready	ROA
Time Logger on Bottom	1250
Equipment Number	8050
Location	Windsor
Recorded By	McDaniel
Witnessed By	Brandon Rivera

Borehole Record		Tubing Record					
Run Number	Bit	From	To	Size	Weight	From	To
One	12.25"	KB	880'				
Two	7.875"	880'	7882'				

Casing Record		Top		Bottom	
Size	Wgt/Ft	Top	Bottom	Top	Bottom
8.63"	24# J-55	KB	869'		
4.50"	11.6# L-80	KB	7909'		

<<< Fold Here >>>

All interpretations are opinions based on inferences from electrical or other measurements and we cannot and do not guarantee the accuracy or correctness of any interpretation, and we shall not, except in the case of gross or willful negligence on our part, be liable or responsible for any loss, costs, damages, or expenses incurred or sustained by anyone resulting from any interpretation made by any of our officers, agents or employees. These interpretations are also subject to our general terms and conditions set out in our current Price Schedule.

**Comments**

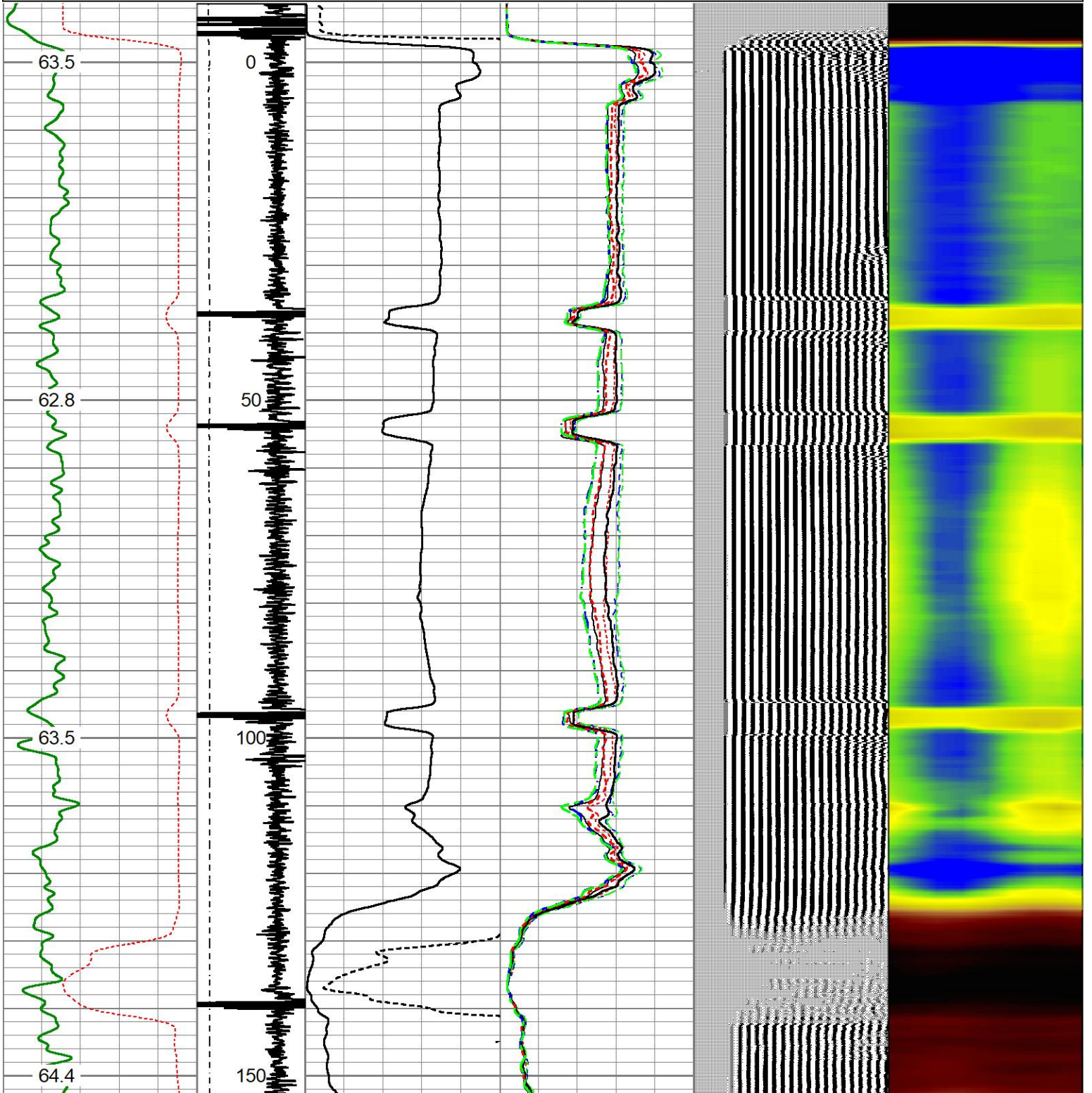
**Log not correlated to any other log  
Log ran W/ 0PSI applied @ surface  
!!!!!!!!!!!!!! Thank you for choosing The Wireline Group !!!!!!!!!!!!!!!**

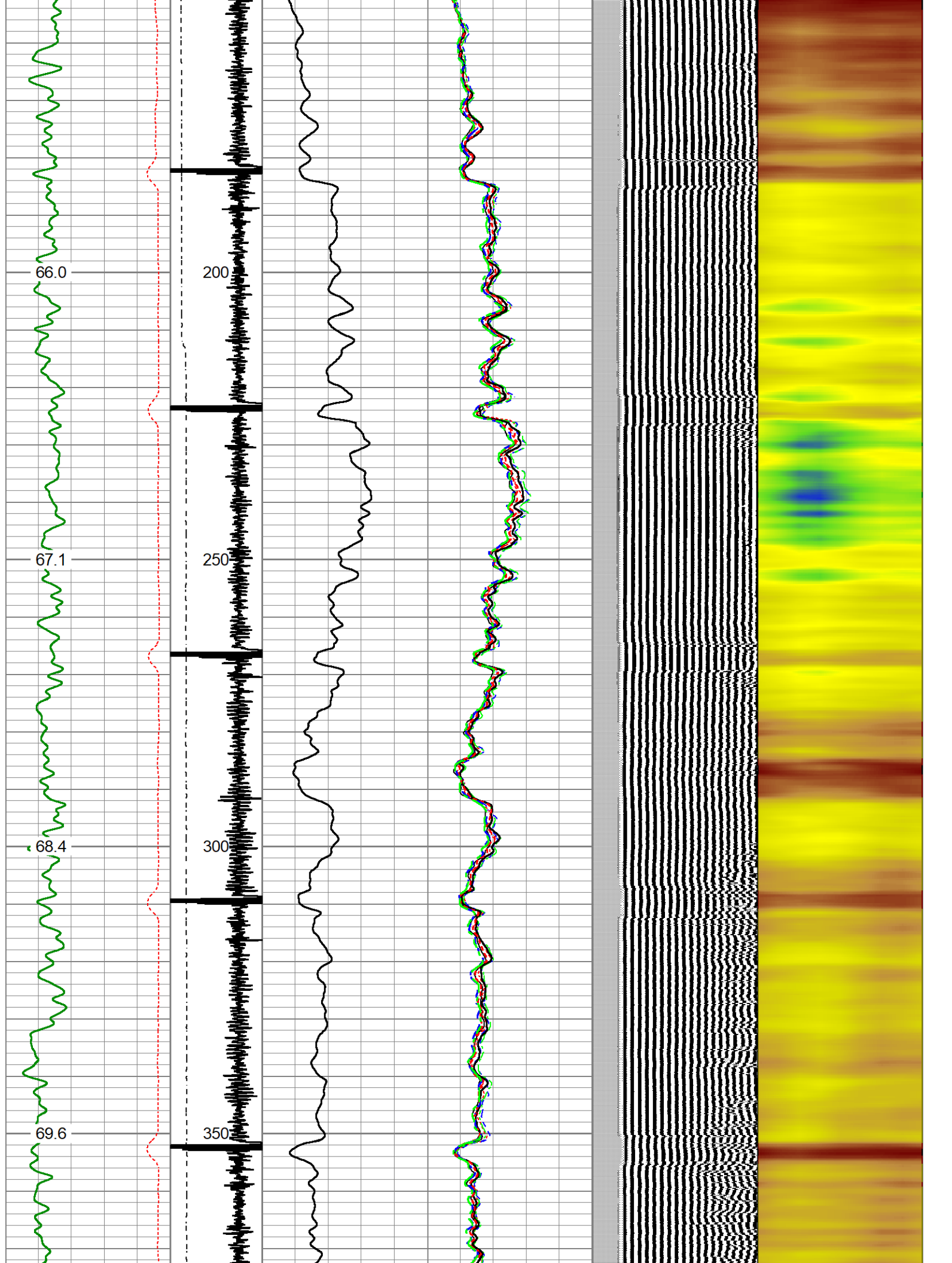


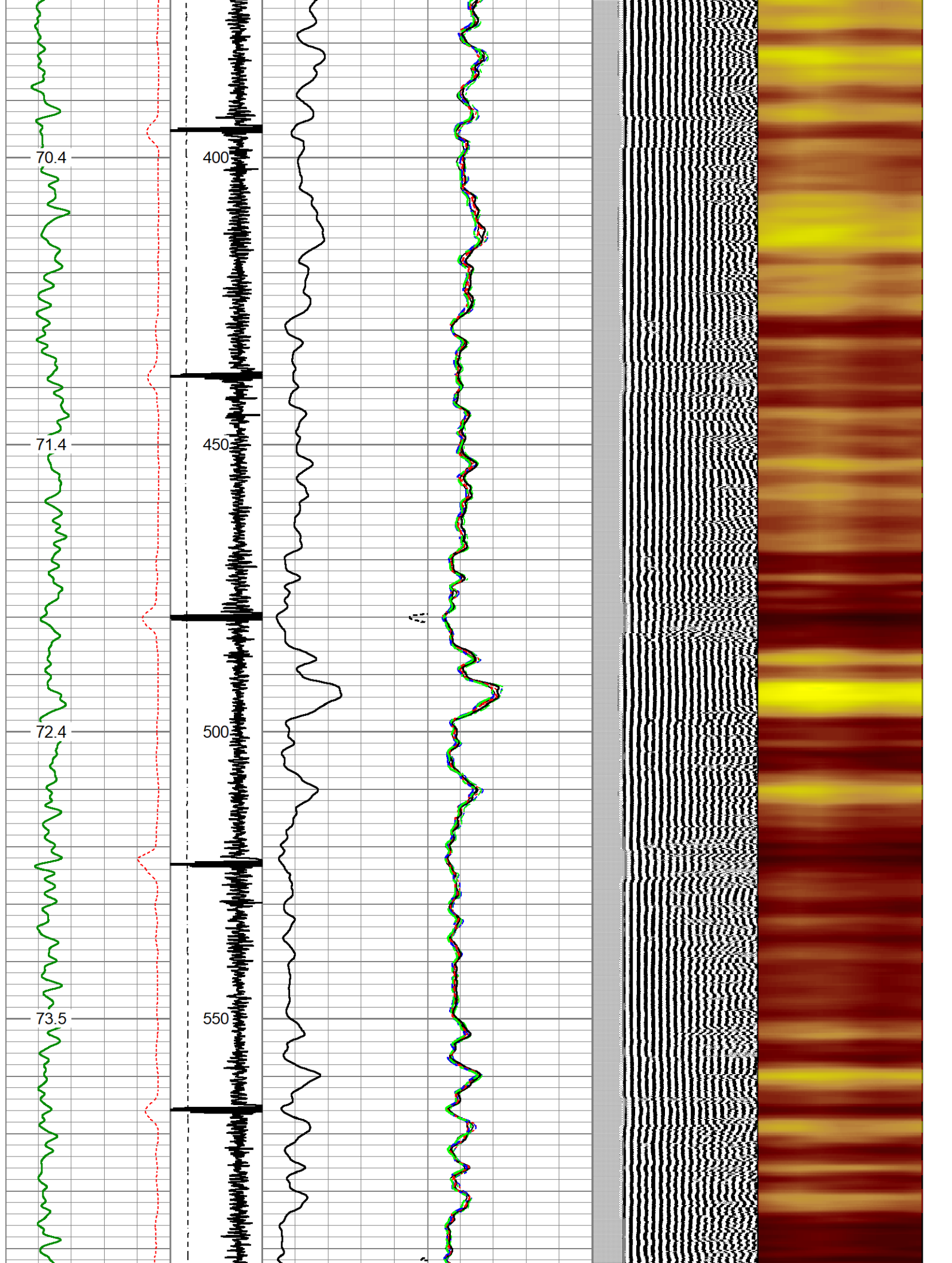
**Main Pass 5"=100' (0 PSI)**

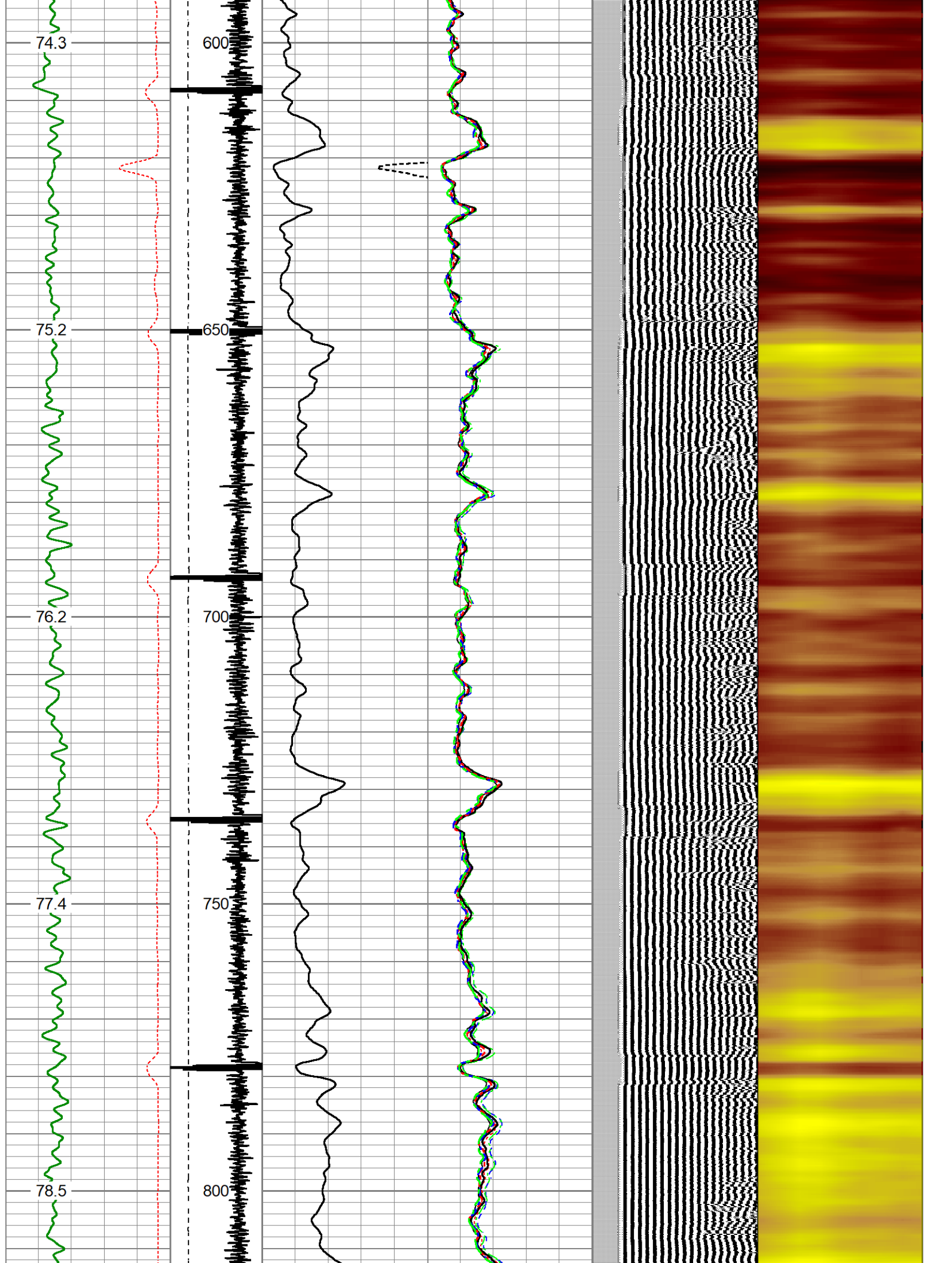
Database File 0512331243mcgh32-32\_oxy.db  
 Dataset Pathname pass22  
 Presentation Format rbt-gct8acc  
 Dataset Creation Fri Apr 05 12:58:44 2024  
 Charted by Depth in Feet scaled 1:240

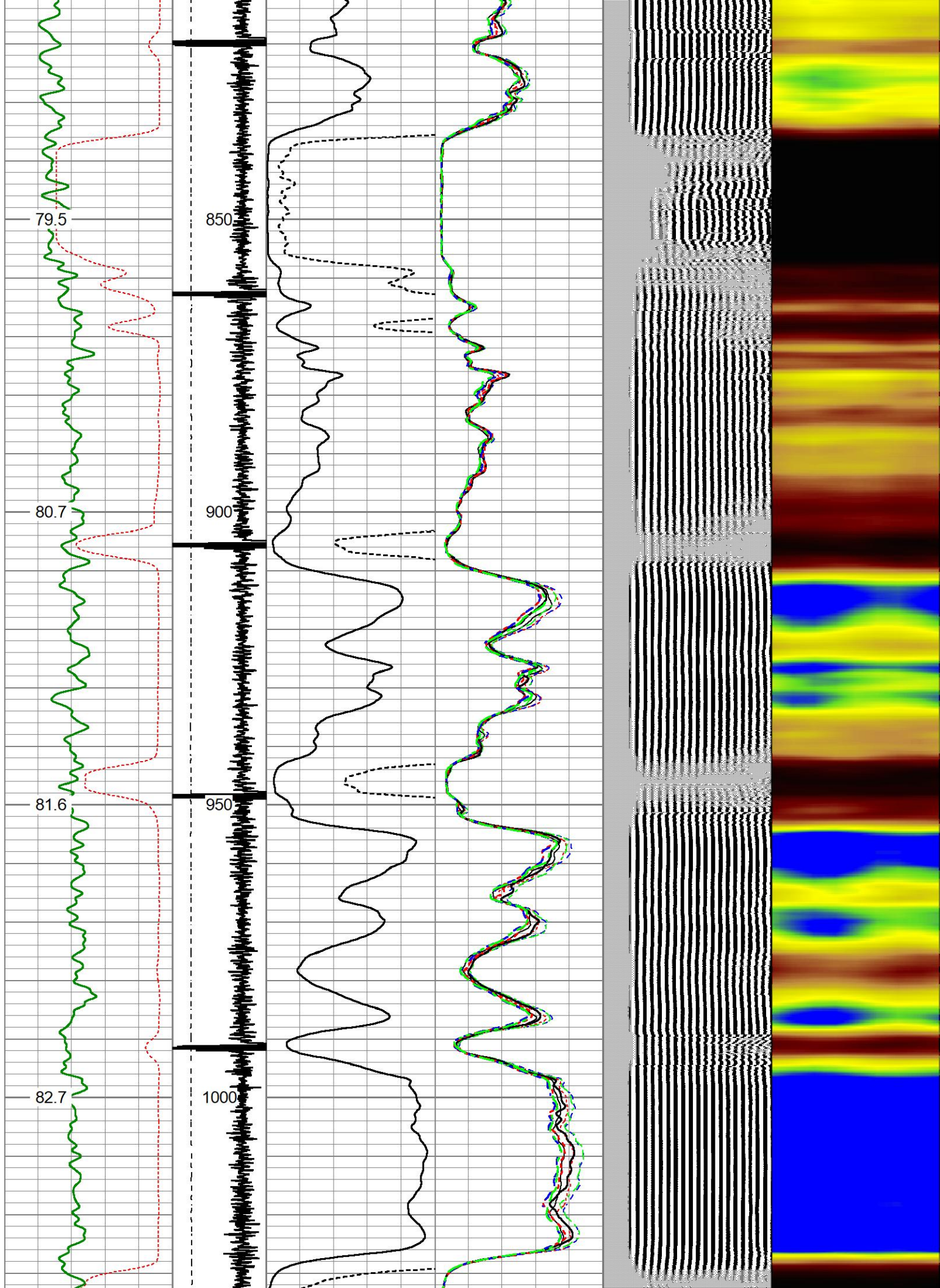
Travel Time	-3 CCL\$1 1 0	AMP (mV) 100	-5	AMPS1	150	200	VDL (usec) 1200	1	Cement Map	8
328 (usec) 228	LTEN	0 AMPx10 (mV) 10	-5	AMPS2	150					
Gamma Ray	0 (lb/3000)		-5	AMPS3	150					
0 (GAPI) 200			-5	AMPS4	150					
GCT_TEMP			-5	AMPS5	150					
(degF)			-5	AMPS6	150					
			-5	AMPS7	150					
			-5	AMPS8	150					

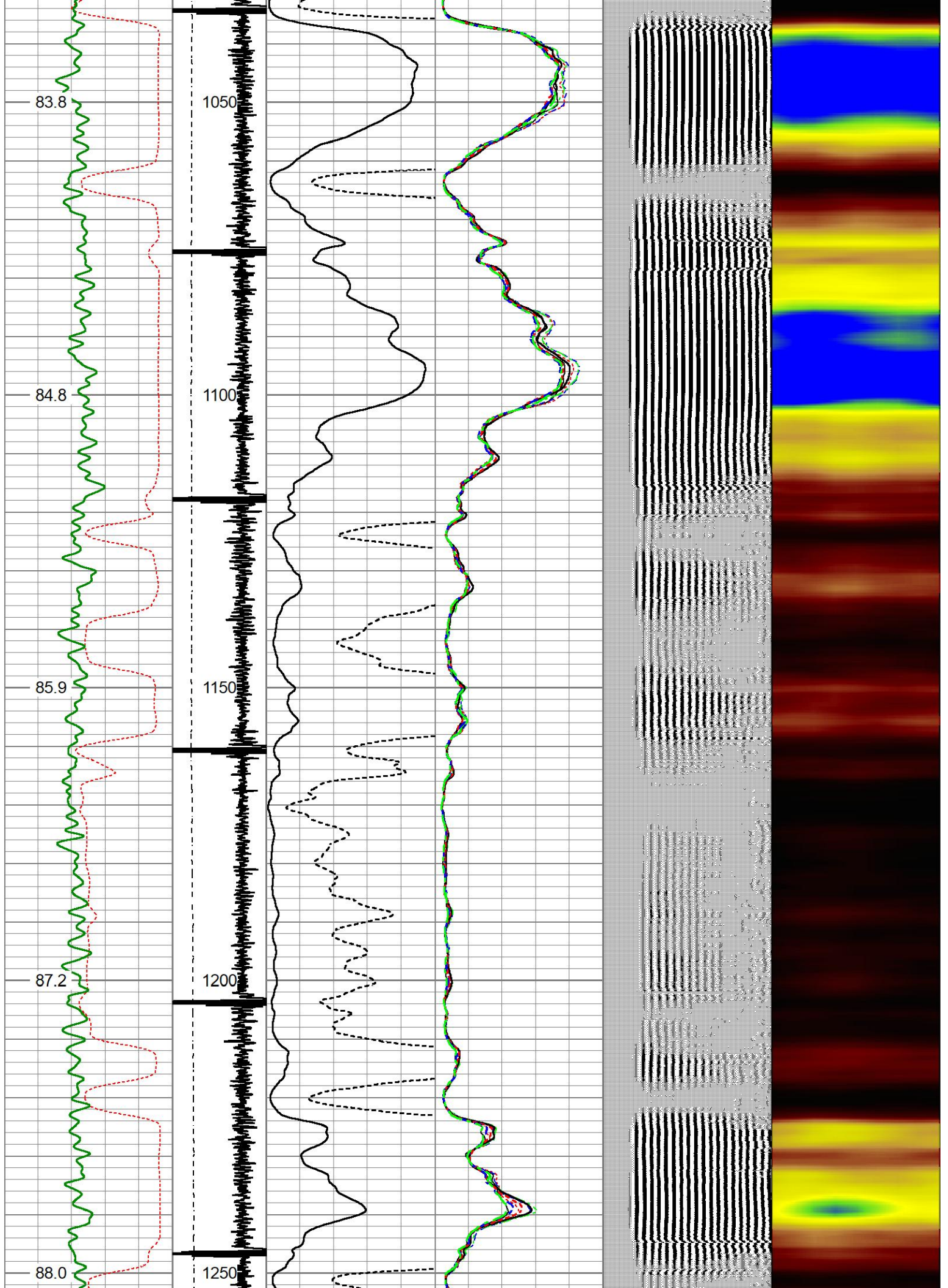


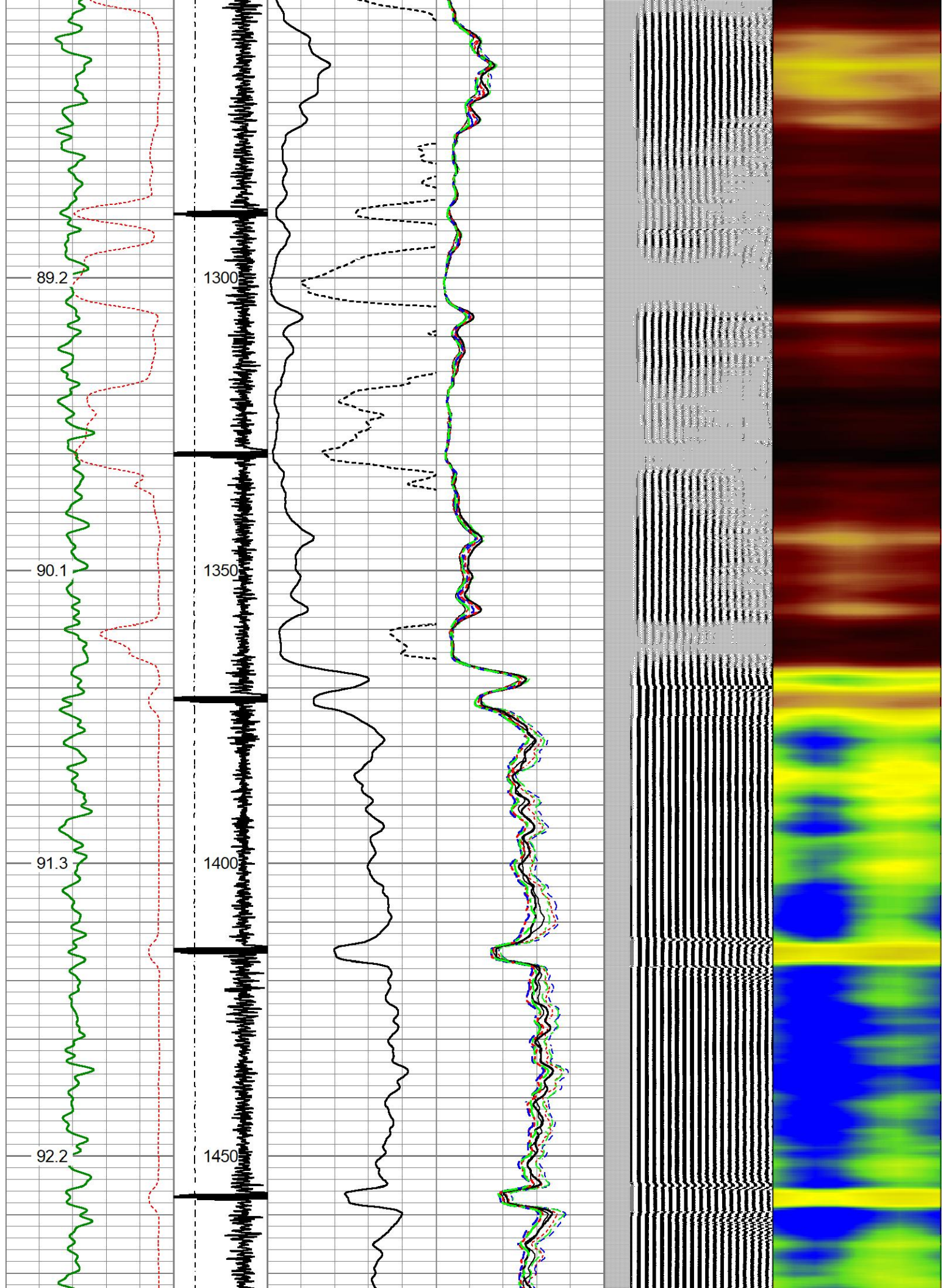


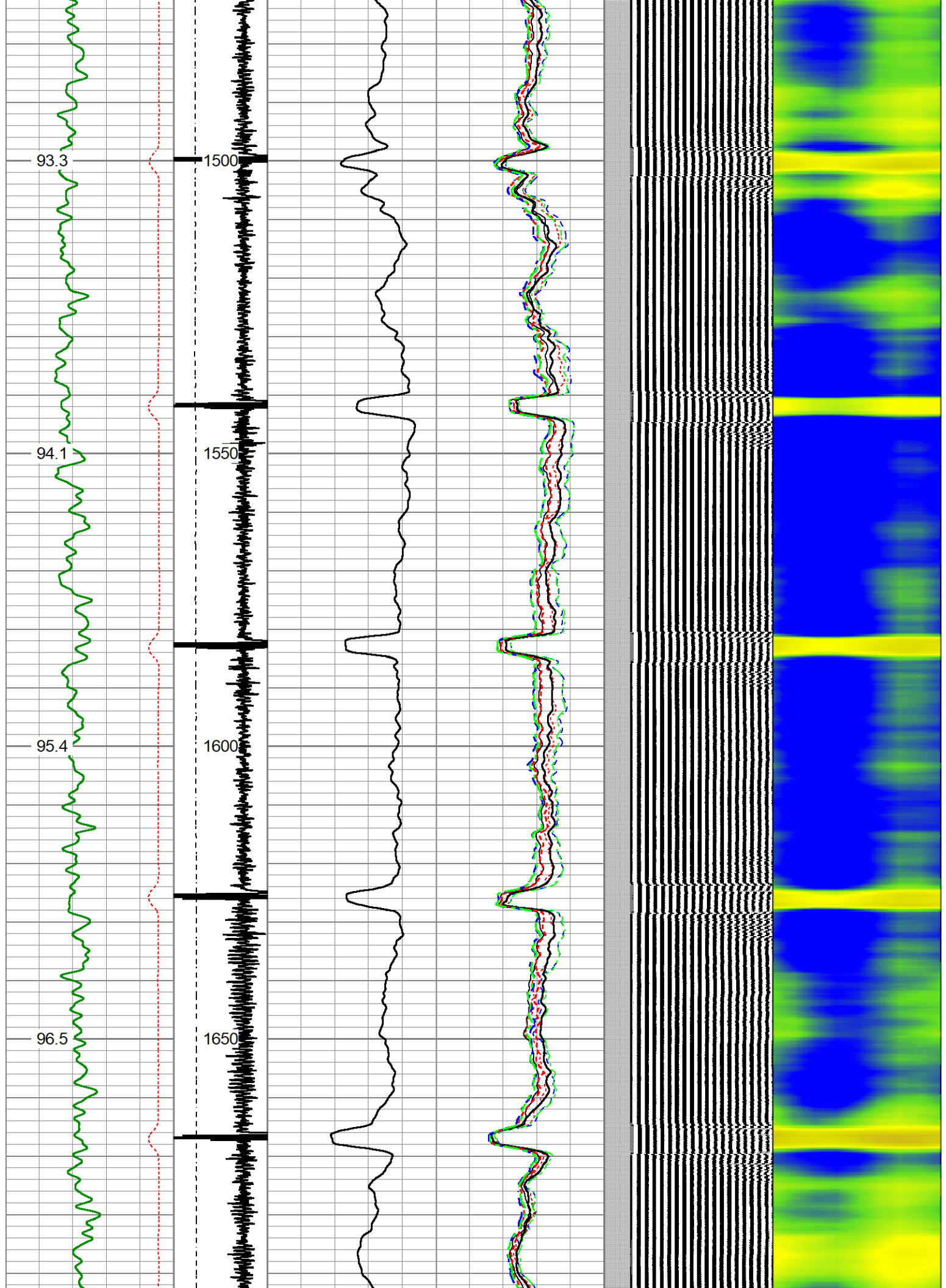


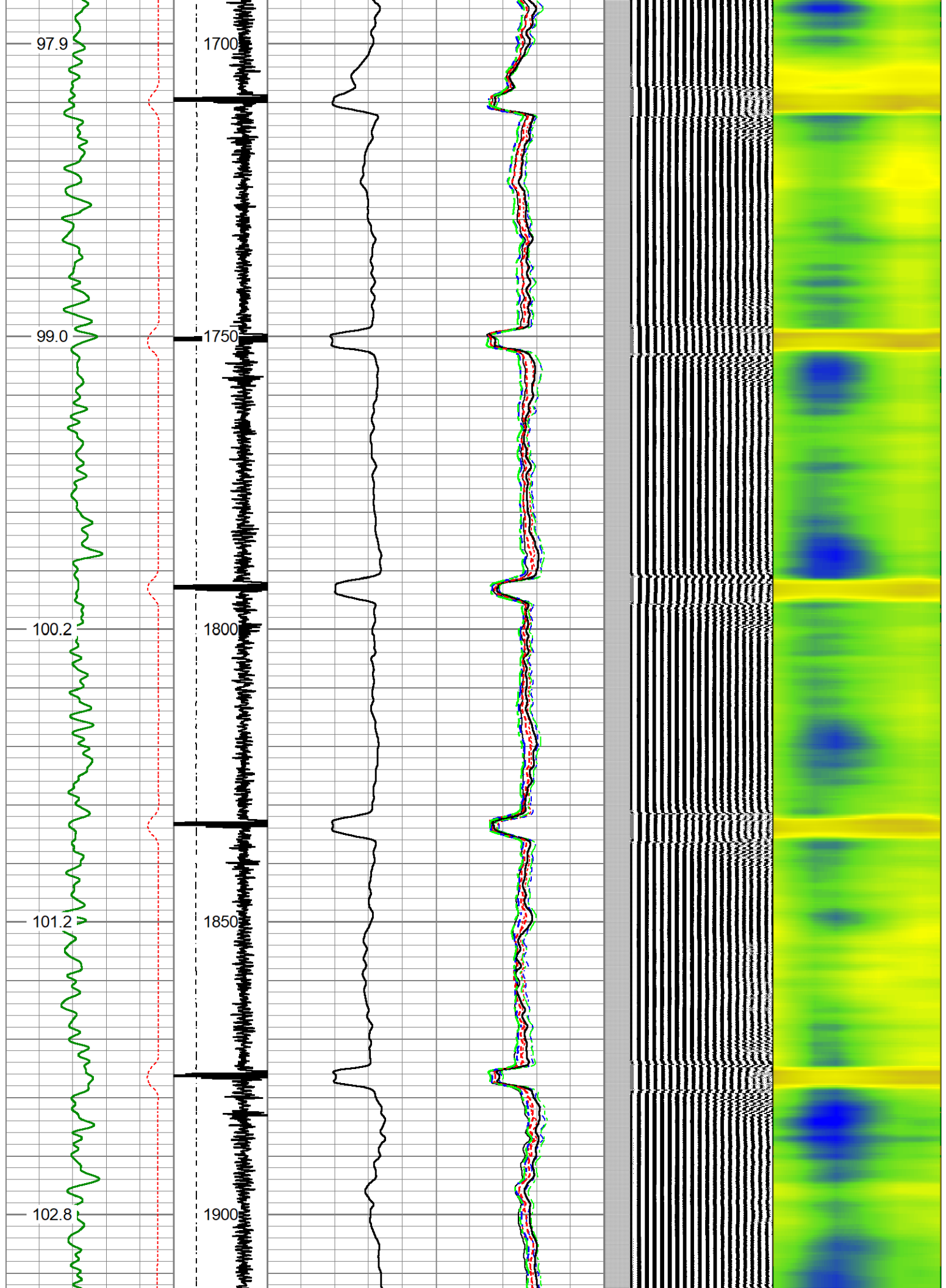


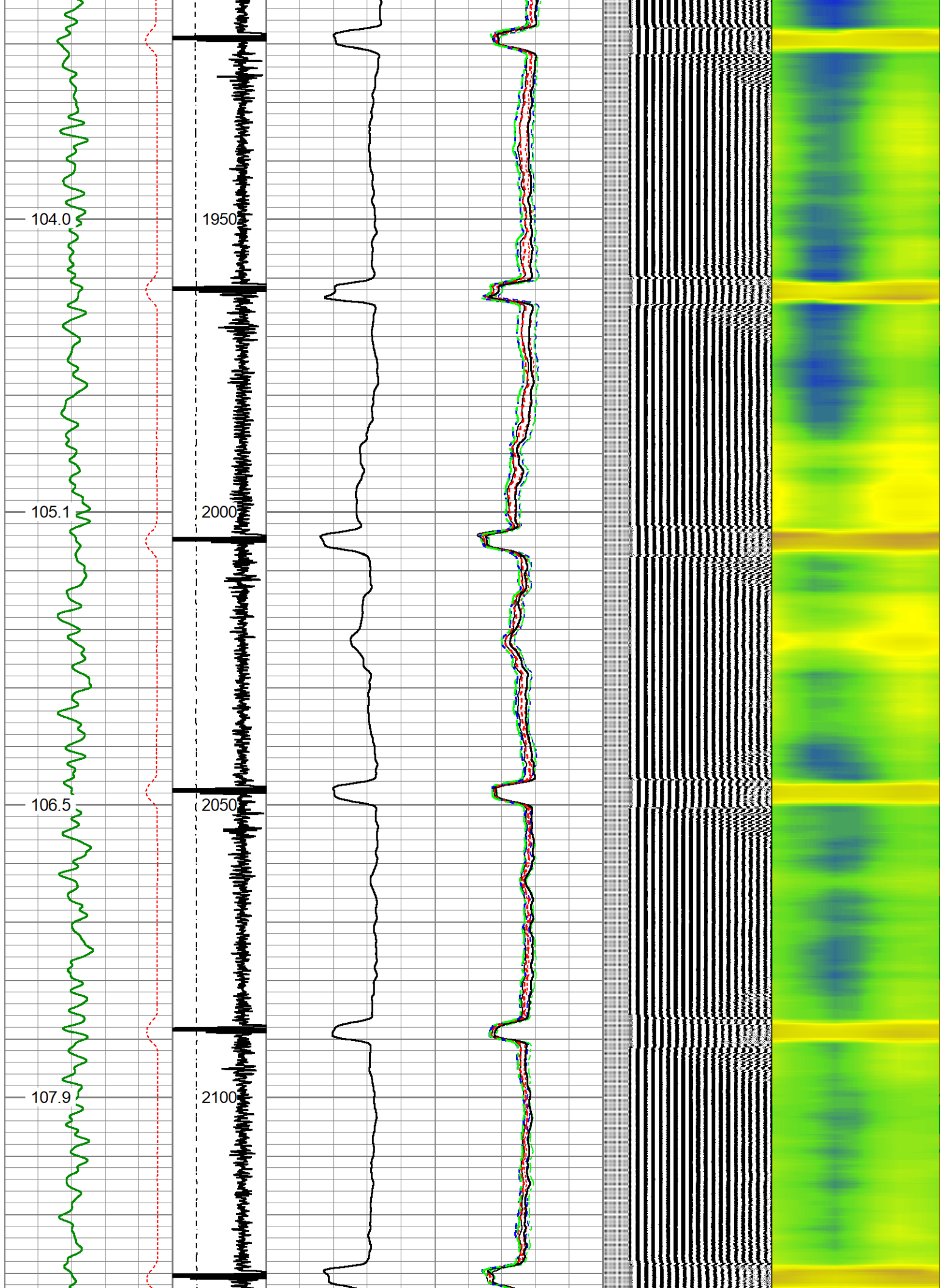


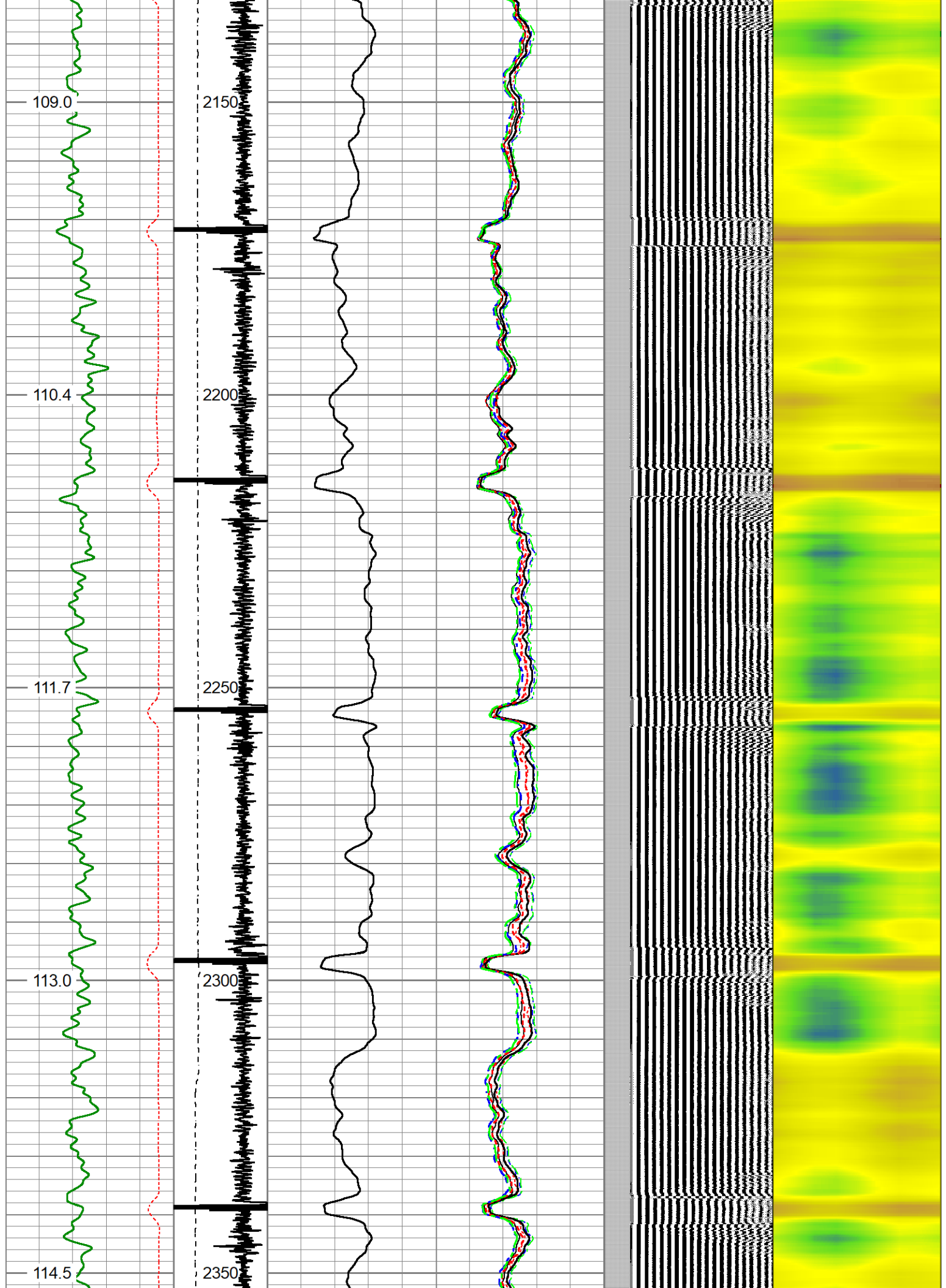


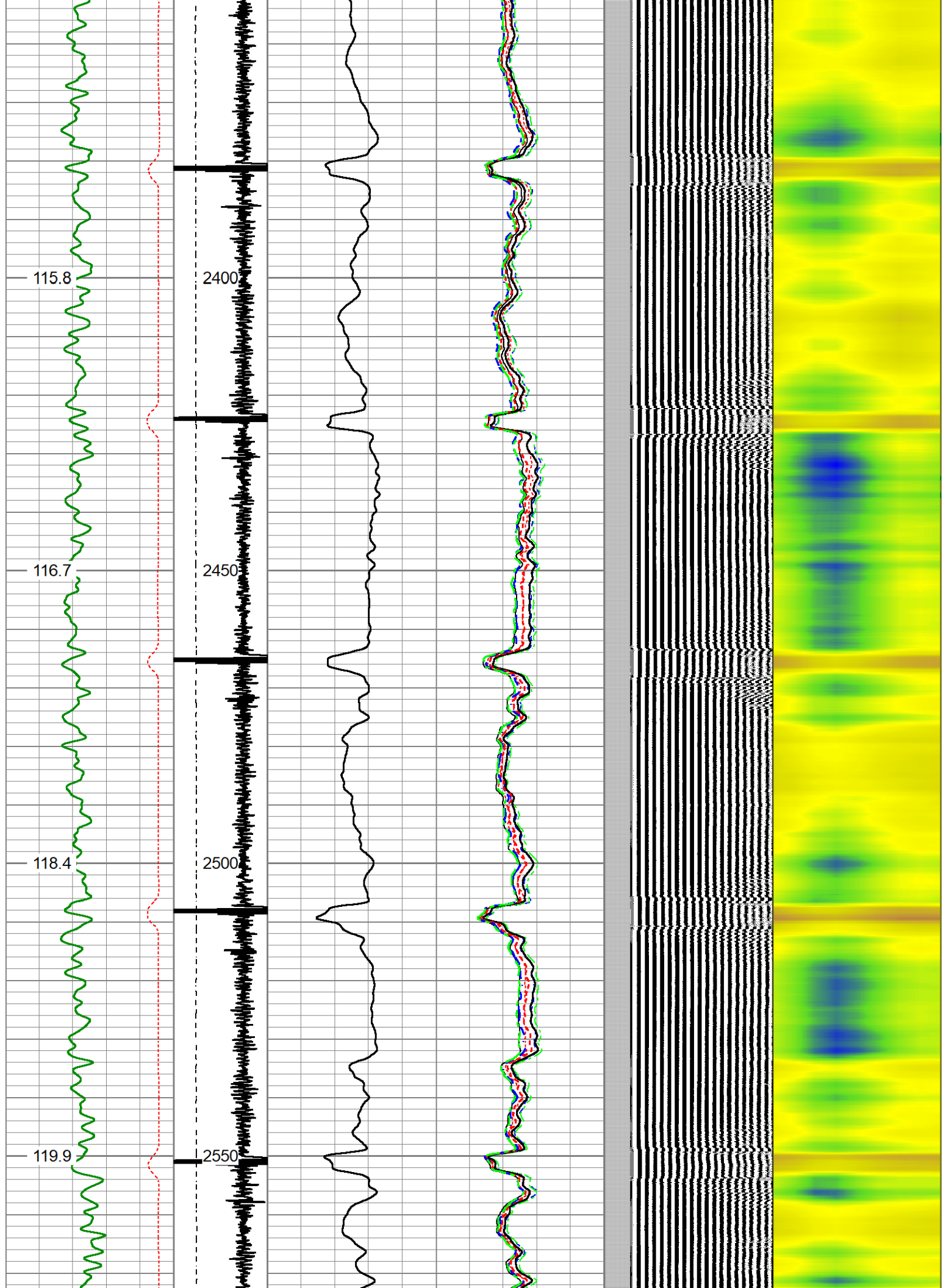


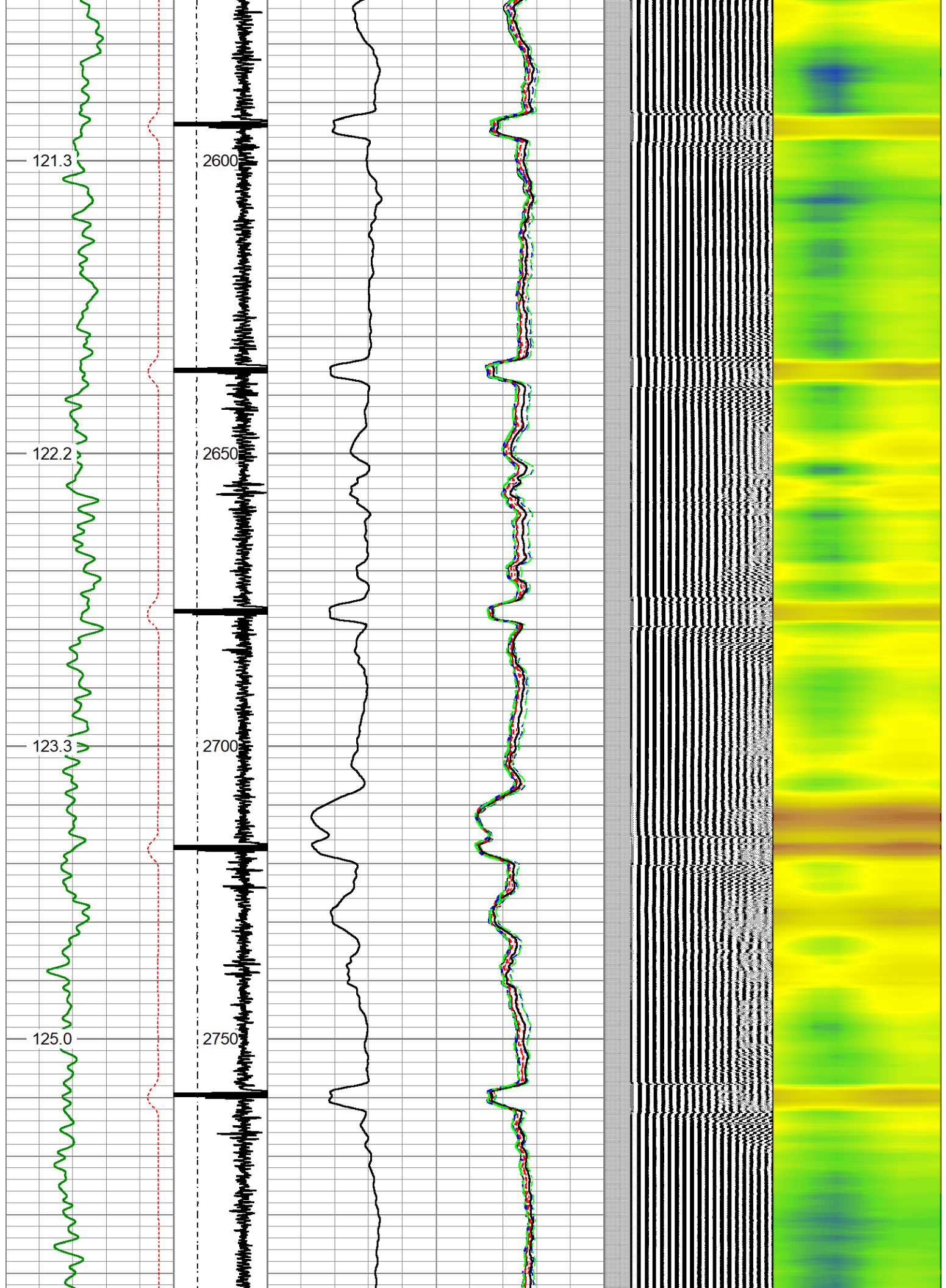


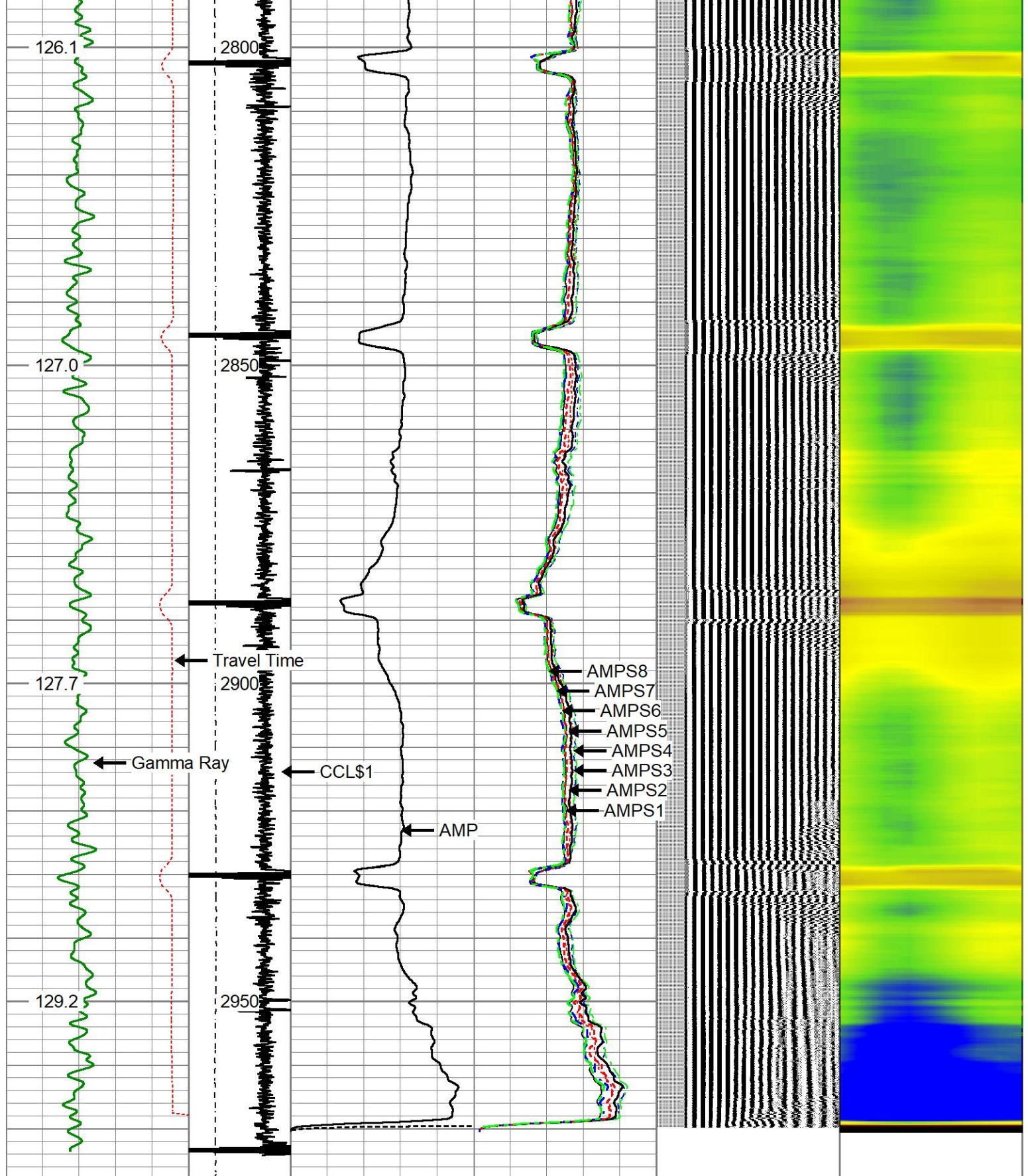












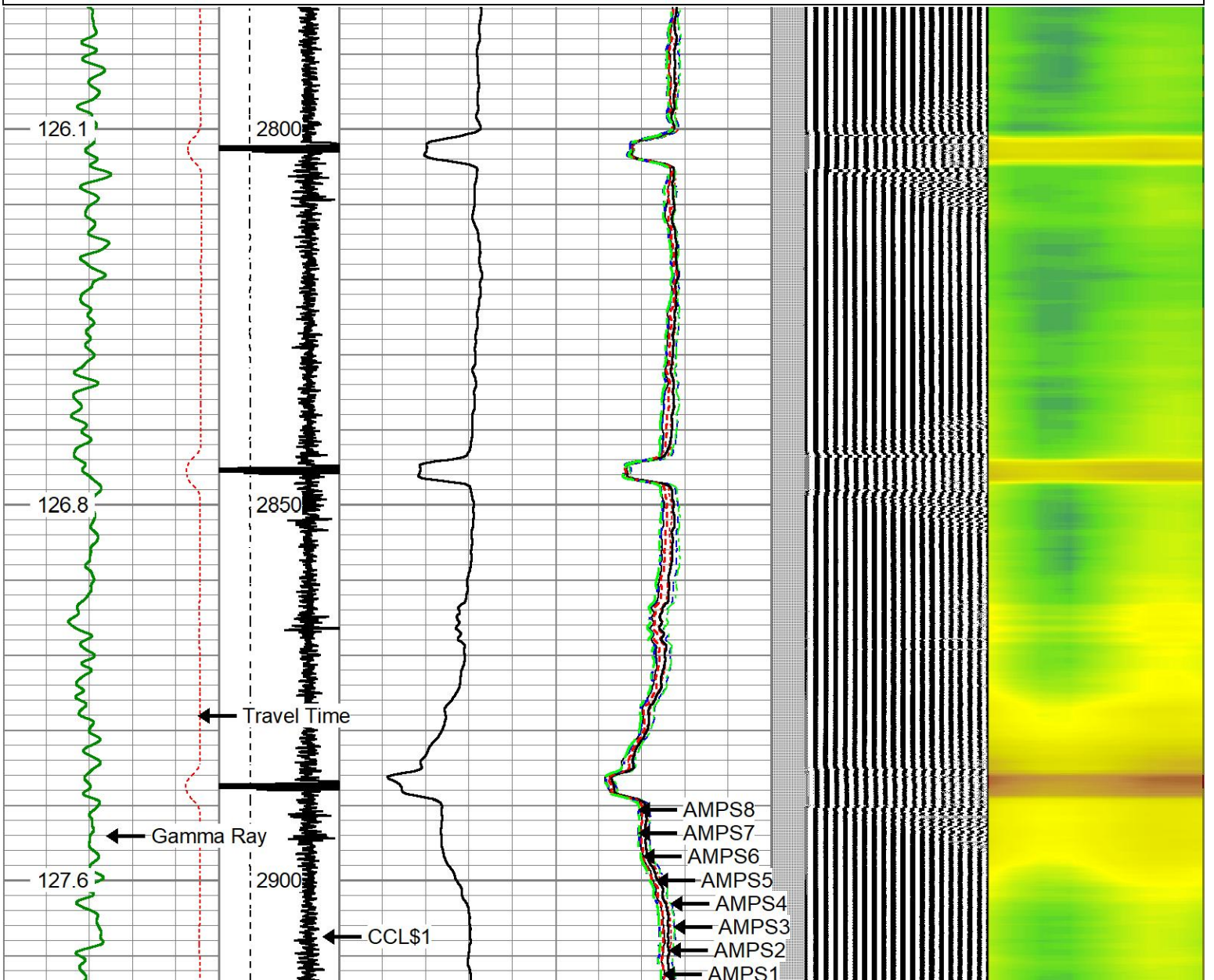
Travel Time	-3	CCL\$1	1	0	AMP (mV)	100	-5	AMPS1	150	200	VDL (usec)	1200	1	Cement Map	8
328 (usec)	228	LTEN	0	AMPx10 (mV)	10	-5	AMPS2	150							
Gamma Ray	0	(lb3000)				-5	AMPS3	150							
0 (GAPI)	200					-5	AMPS4	150							
GCT_TEMP						-5	AMPS5	150							
(degF)						-5	AMPS6	150							
						-5	AMPS7	150							

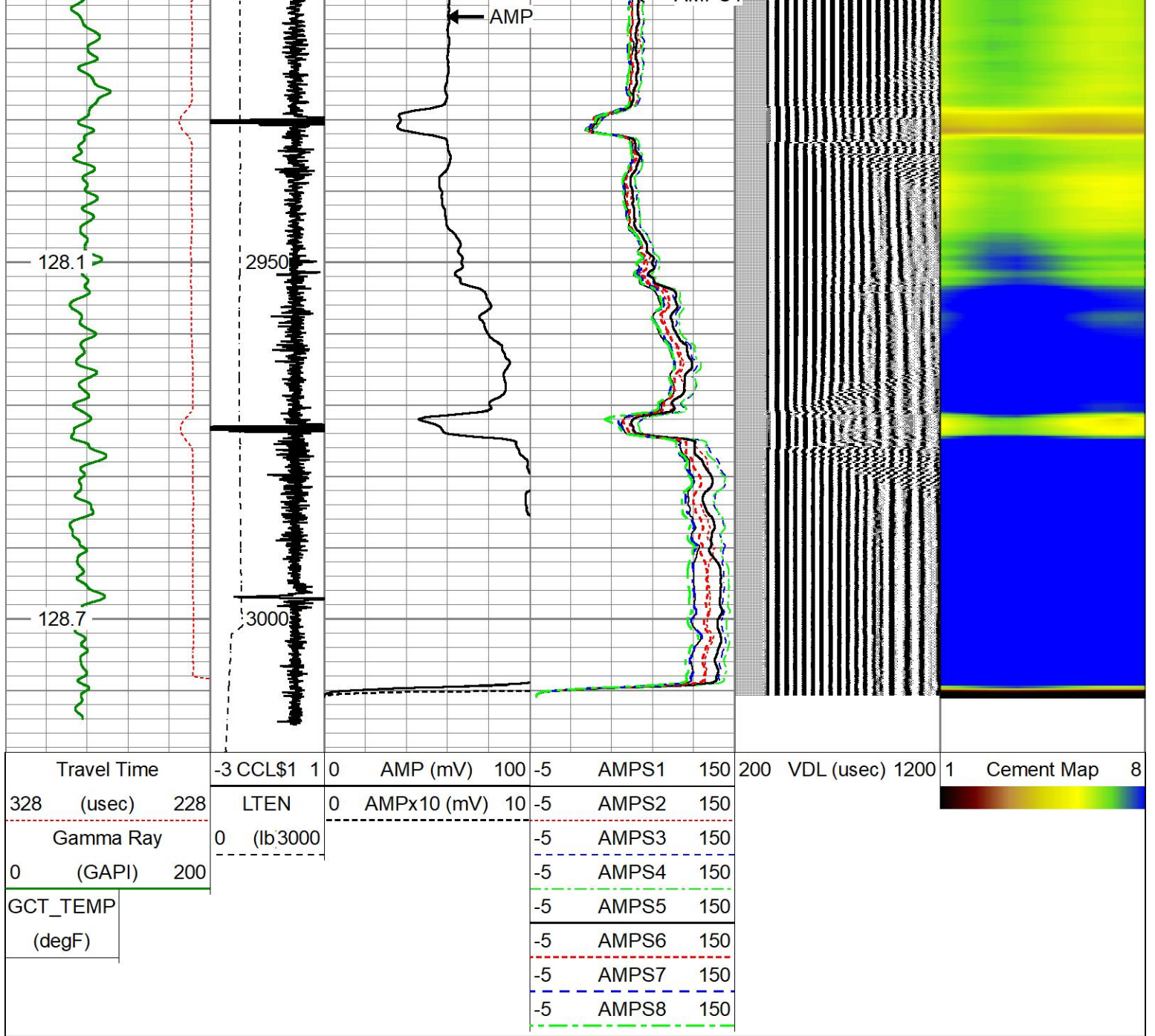


# Repeat Pass 5"=100' (0 PSI)

Database File 0512331243mcgh32-32\_oxy.db  
 Dataset Pathname pass21  
 Presentation Format rbt-gct8acc  
 Dataset Creation Fri Apr 05 12:53:21 2024  
 Charted by Depth in Feet scaled 1:240

Travel Time	-3 CCL\$1 1	0 AMP (mV) 100	-5 AMPS1 150	200 VDL (usec) 1200	1 Cement Map 8
328 (usec) 228	LTEN	0 AMPx10 (mV) 10	-5 AMPS2 150		
Gamma Ray	0 (lb/3000)		-5 AMPS3 150		
0 (GAPI) 200			-5 AMPS4 150		
GCT_TEMP			-5 AMPS5 150		
(degF)			-5 AMPS6 150		
			-5 AMPS7 150		
			-5 AMPS8 150		





Sensor	Offset (ft)	Schematic	Description	Length (ft)	O.D. (in)	Weight (lb)
GCT_FMWR	14.52		Cable_Head-Standard Standard Cable Head	1.00	1.69	1.00
mSec_Count	14.52					
RBT_Status	14.52					
Error_Ct	14.52					

WVFS8	9.02		RBT8acc-Probe275acc (120663) 2.75" Radial Corrosion with accelerometer	8.75	2.75	110.00
WVFS7	9.02					
WVFS6	9.02					
WVFS5	9.02					
WVFS4	9.02					
WVFS3	9.02					
WVFS2	9.02					
WVFS1	9.02					
WVF3FT	9.02					
WVF5FT	8.02					
RBT_HV	4.77					
RBT_ACCZ	4.77					
RBT_ACCY	4.77					
RBT_ACCX	4.77					
GCT_HV	4.77					
WVFSYNC	4.77					
WVFCAL	4.77					
CCL\$2	3.81					
CCL\$1	3.81	GCacc-GCT275-0000 (FW1905-206) Probe 2.75" Gamma Ray - CCL w/ Temp	4.77	2.75	55.00	
GCT_Temp	3.26					
GR	2.39					
GCT_IntTemp	1.67					
Dataset: 0512331243mcgh32-32_oxy.db: field/well/run1/pass22 Total length: 14.52 ft Total weight: 166.00 lb O.D.: 2.75 in						

### Calibration Report

Database File 0512331243mcgh32-32\_oxy.db  
Dataset Pathname pass22  
Dataset Creation Fri Apr 05 12:58:44 2024

### Gamma Ray Calibration Report

Serial Number: FW1905-206  
Tool Model: GCT275-0000  
Performed: Sat Dec 9 07:41:04 2023

Calibrator Value: 297.9 GAPI

Background Reading: 88.4 cps  
Calibrator Reading: 541.2 cps

Sensitivity: 0.7579 GAPI/cps

### Segmented Cement Bond Log Calibration Report

Serial Number: 120663  
 Tool Model: Probe275acc  
 Calibration Casing Diameter: 4.500 in  
 Calibration Depth: 1546.133 ft

Master Calibration, performed Fri Apr 5 12:46:57 2024:

	Raw (v)		Calibrated (mv)		Results	
	Zero	Cal	Zero	Cal	Gain	Offset
3'	0.000	0.409	0.000	81.196	198.309	-0.001
CAL	0.000	0.483				
5'	0.000	0.380	0.000	81.196	213.446	-0.000
SUM						
S1	0.000	0.392	0.000	100.000	254.810	-0.002
S2	0.000	0.402	0.000	100.000	248.494	-0.001
S3	0.000	0.393	0.000	100.000	254.777	-0.001
S4	0.000	0.403	0.000	100.000	248.186	-0.001
S5	0.000	0.427	0.000	100.000	234.463	-0.002
S6	0.000	0.437	0.000	100.000	228.831	-0.002
S7	0.000	0.429	0.000	100.000	232.923	-0.002
S8	0.000	0.423	0.000	100.000	236.405	-0.002

Inclinometer Calibration Report

Performed:	(Not Performed)				
	Low Read.	High Read.	Low Ref.	High Ref.	
X Accelerometer	0.00	1.00	0.00	1.00	gee
Y Accelerometer	0.00	1.00	0.00	1.00	gee
Z Accelerometer	0.00	1.00	0.00	1.00	gee

**Company** Occidental Petroleum Corp.  
**Well** McGuckin H32-32  
**Field** Wattenberg  
**County** Weld **State** Colorado



Radial Cement  
 Bond Log  
 Gamma Ray/CCL