

BLED SOE 4-19-5-44

QC: MJH

API # 125-10397 Loc. # 337609

FIELD NAME BALLYNEAL - #1970

Spud Date 1/10/2007

Basin DENVER - JULESBURG

Location NWNW 19 5N 44W 6

Elevation GL (ft) 3757

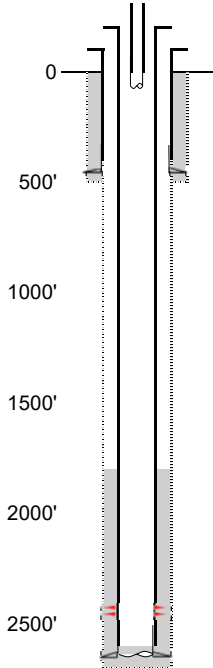
Elevation KB (ft) 3762

TD (ft) 2670

PBTD (ft) 2607

Formation Tops

EXISTING



Existing Casing and Cement Coverage

SURF: Size: 7", Hole Size: 9.875 in.
Depth: 466 ft., Weight: UNK
Cement: 223 sx, Top: 0 ft., Method: Vis

Deepest DWR w/in 1 mi. = 360'

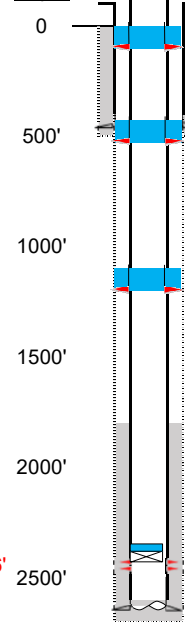
1ST, Size: 4.5", Hole Size: 6.25"
Depth: 2654', Weight: UNK
Cement: 75 sx, TOC: 1765', Method: CBL

tubing UNK
TOC = 1765' (CBL)
NBRR Perfs 2436' - 2446'
PBTD (ft) 2607'
TD (ft) 2670'

NIOBRARA - 2436'

PROPOSED

Depth Plug Placement



Perf at 100', pump 20 sx through perfs. Leave 10 sx inside to surface.
Perf at 516', pump 20 sx through perfs. Leave 10 sx inside. Tag above 416' reqd.
Perf at 1200', pump 20 sx through perfs. Leave 10 sx inside. Tag above 1100' reqd.

CBL Required

VERIFY TOC w/ CBL

Pressure test casing after setting CIBP.

CIBP w/ 2 sx @ 2361' (75' above top perf).

NIOBRARA - 2436'