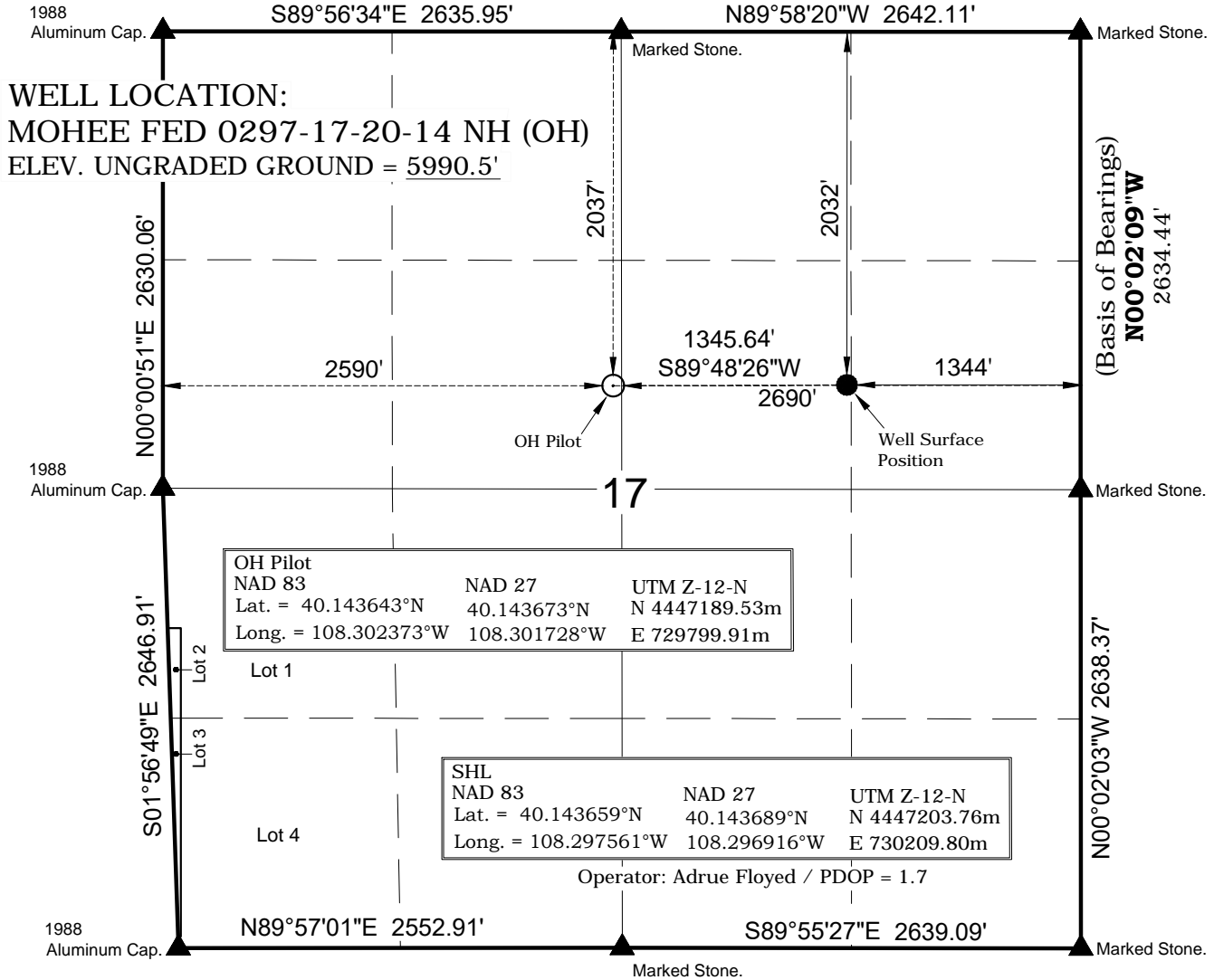


T2N, R97W, 6th P.M.



NOTES:

- ▲ = Section Corners Located
- △ = Section Corners Located Not Monumented
- 1. Well footages are measured at right angles to the Section Lines.
- 2. Bearings and distances shown on this plat are based upon a local Cartesian Grid which is oriented to Geodetic North at the SE Corner of Section 36, T2N, R97W, 6th P.M. The grid having a mean project height of 6,250'. Lineal units used are U.S. Survey Foot. Trimble G.P.S. equipment was used in performance of this survey.
- 3. Latitude and Longitude are NAD 83 (2011) Epoch 2010. Elevations are NAVD 88. Which are derived from an NGS OPUS Report.

SURVEYOR'S CERTIFICATE

I, MITCH S. BATTY, DO HEREBY CERTIFY THAT I AM A PROFESSIONAL LAND SURVEYOR AND THAT I HOLD CERTIFICATE #38912 AS PRESCRIBED BY THE LAWS OF THE STATE OF COLORADO. I FURTHER CERTIFY THAT THIS PLAT AND ITS COMPUTATIONS AND FIELD SURVEYS NECESSARY FOR THE DATA COMPILED HEREON WERE MADE BY ME OR UNDER MY SUPERVISION AND THE SAME ARE TRUE AND CORRECT TO THE BEST OF MY KNOWLEDGE AND BELIEF; THAT THE SURVEY WAS PERFORMED IN ACCORDANCE WITH APPLICABLE STANDARDS OF PRACTICE AND IS NOT A GUARANTY OR WARRANTY, EITHER EXPRESSED OR IMPLIED. THIS CERTIFICATE DOES NOT REPRESENT A LAND SURVEY PLAT OR IMPROVEMENT SURVEY PLAT AS DEFINED BY C.R.S. 38-51-102 AND CANNOT BE RELIED UPON TO DETERMINE OWNERSHIP.

PROFESSIONAL LAND SURVEYOR
 MITCH S. BATTY
 5-6-25
 38912

ANSCHUTZ EXPLORATION CORPORATION
 555 17th Street, Suite 2400 - Denver, Colorado 80202



WELL PLAT

MOHEE FED 0297-17-20-14 NH (OH)
 2037' FNL & 2590' FWL (OH)
 SE 1/4 NW 1/4 OF SECTION 17, T2N, R97W,
 6th P.M., RIO BLANCO COUNTY, COLORADO

TIMBERLINE (435) 789-1365
 ENGINEERING & LAND SURVEYING, INC.
 209 NORTH 300 WEST - VERNAL, UTAH 84078

DATE SURVEYED: 7-11-23	SURVEYED BY: A.F.	SHEET
DATE DRAWN: 5-6-25	DRAWN BY: S.A.	4A
SCALE: 1" = 1000'	Date Last Revised:	OF 39