



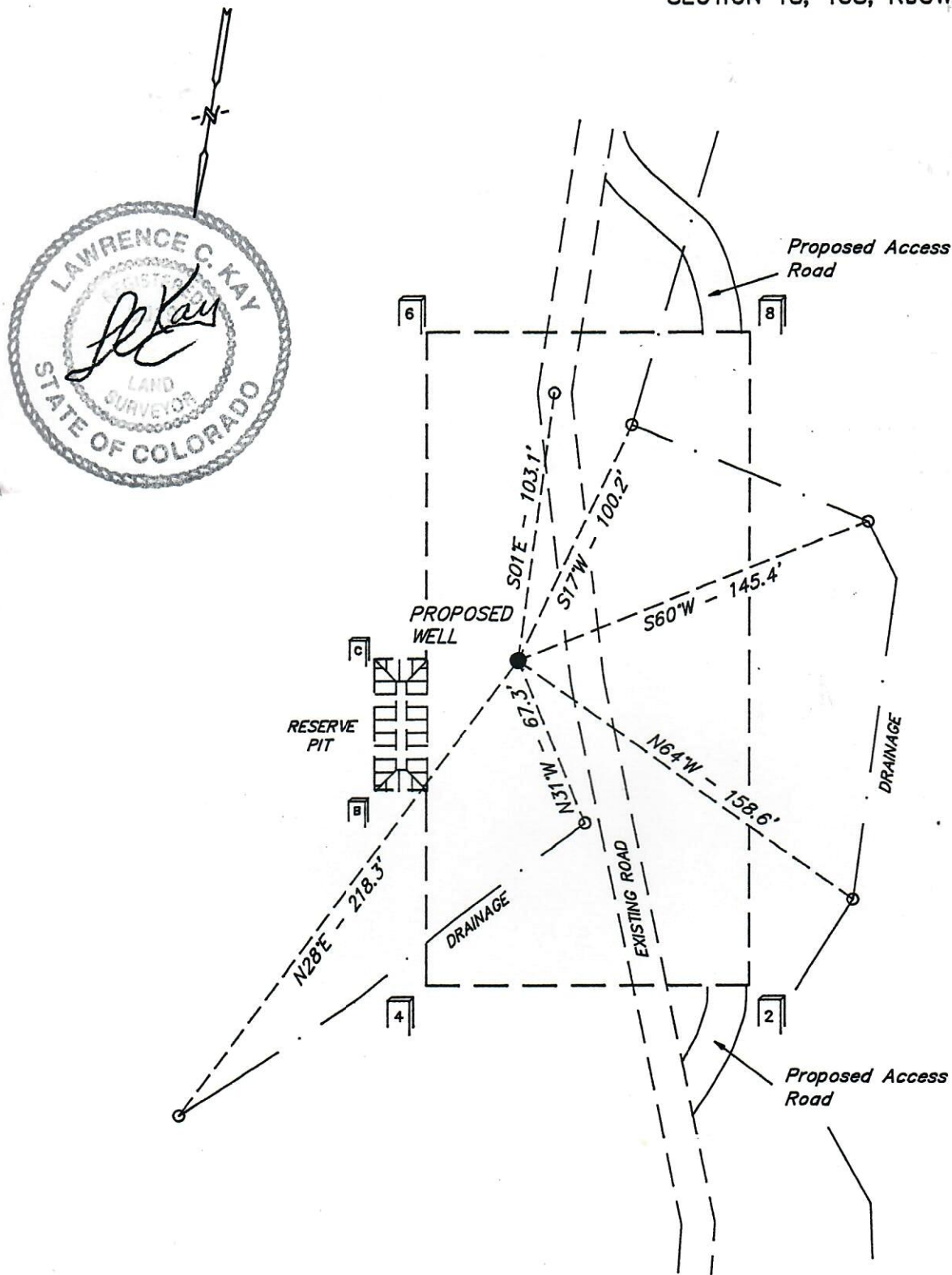
SCALE: 1" = 60'  
DATE: 4-15-93  
Drawn By: T.D.H.

# STRACHAN EXPLORATION

## ADDENDUM TO LEGAL PLAT

EXXON #1

SECTION 18, T3S, R95W, 6th P.M.



SURFACE USE OF LOCATION  
SITE IS GRAZING. THE VEGETATION  
CONSISTS MAINLY OF GRASSES.

UINTAH ENGINEERING & LAND SURVEYING  
85 So. 200 East Vernal, Utah



