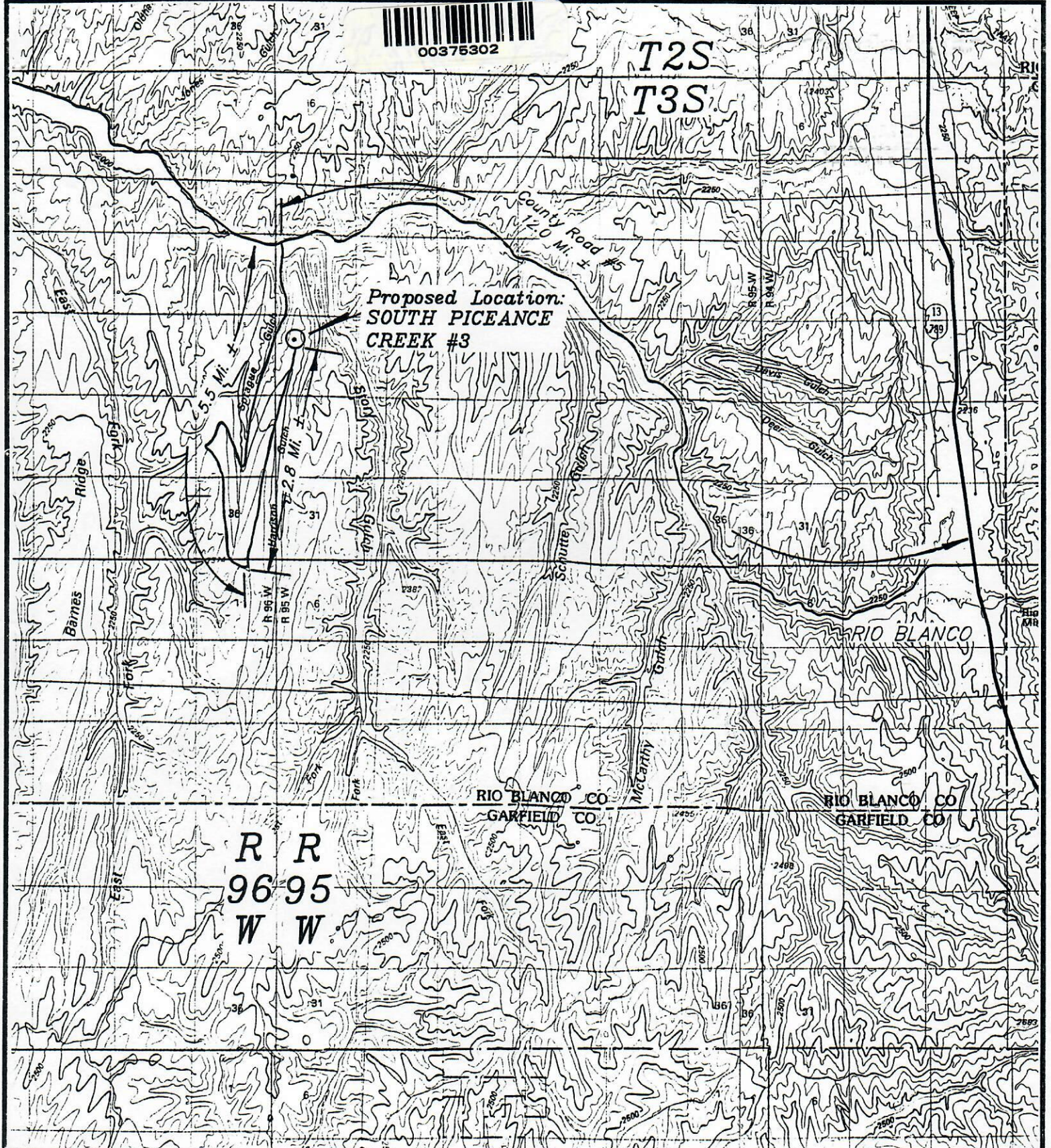




T2S
T3S

Proposed Location:
SOUTH PICEANCE
CREEK #3



TOPOGRAPHIC
MAP "A"

DATE: 6-13-94 D.J.S.



STRACHAN EXPLORATION

SOUTH PICEANCE CREEK #3
SECTION 19, T3S, R95W, 6th P.M.
1980' FNL 1250' FWL